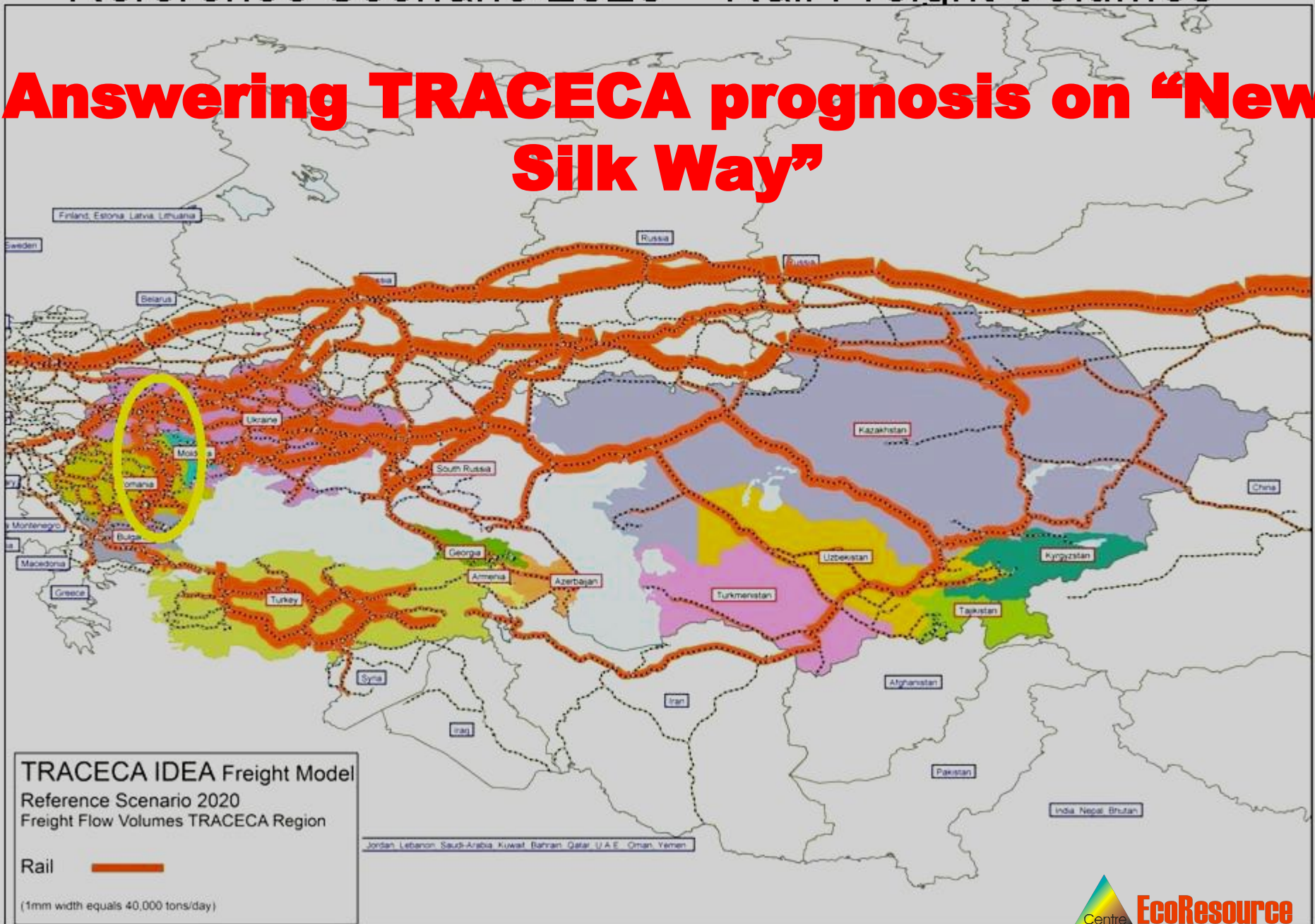


Reference Scenario 2020 – Rail Freight Volumes

Answering TRACECA prognosis on “New Silk Way”



CONNECTIONS BETWEEN TEN-T CORRIDORS THROUGH ROMANIA - UKRAINE - POLAND BYPASS CARPATHIANS

TEN-T North Sea - Baltic

TEN-T Rhine - Danube

TEN-T Orient/East - Med



Potential of 1520 mm contrailer freight traffic from/into/through Poland, Ukraine & Romania, integrated with neighbour countries railways

