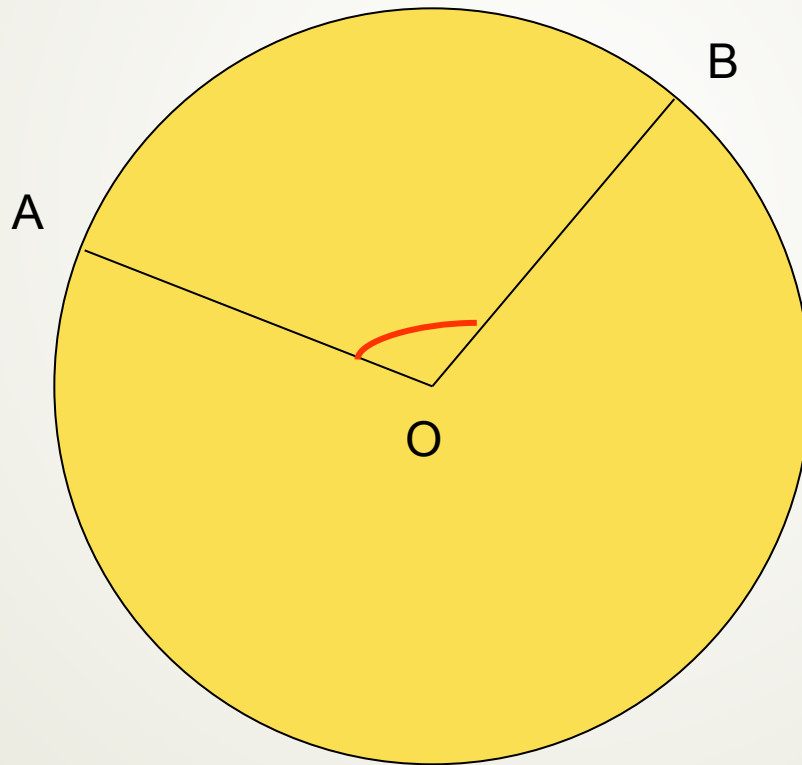


Центральные

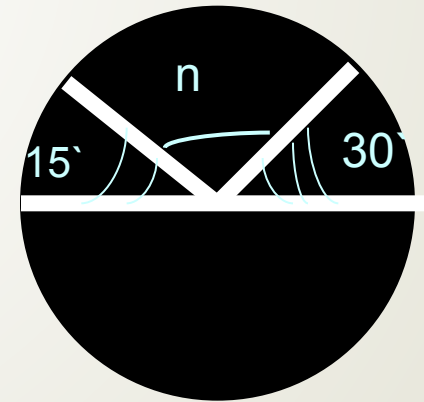
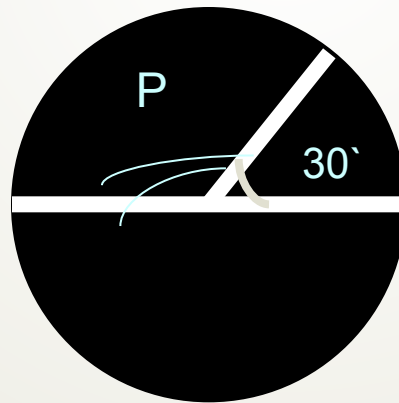
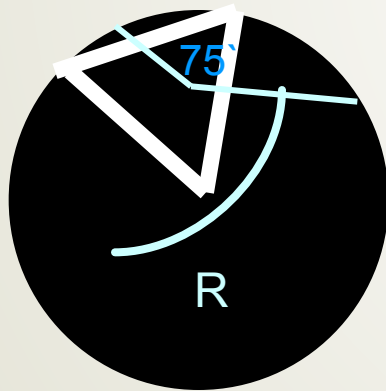
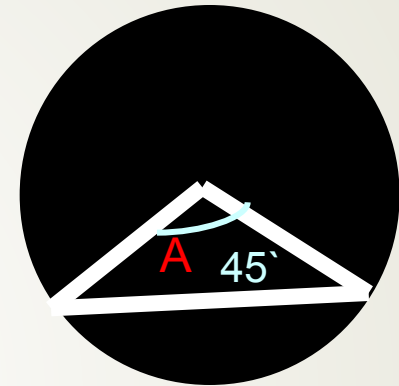
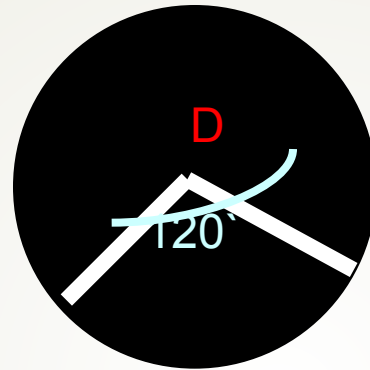
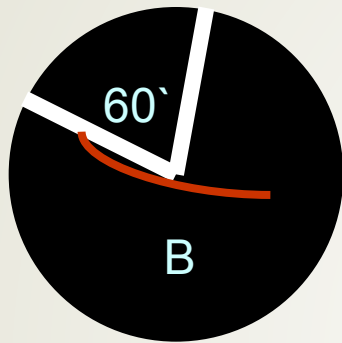
углы

АОВ – ЦЕНТРАЛЬНЫЙ

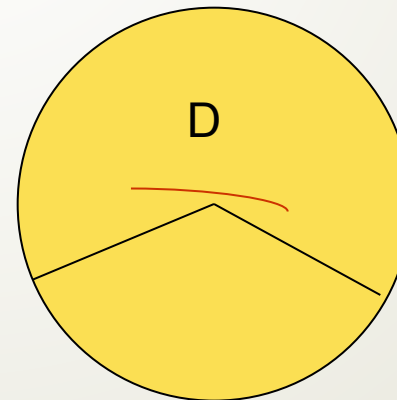
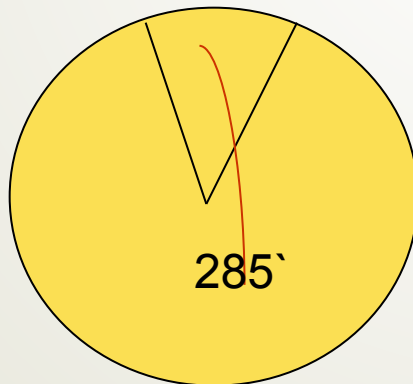
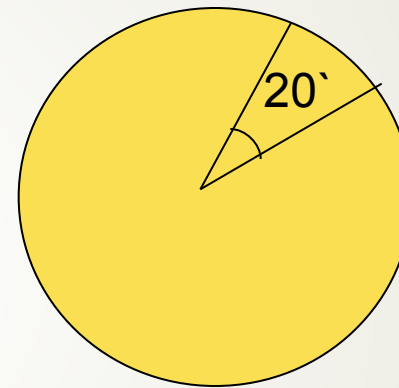
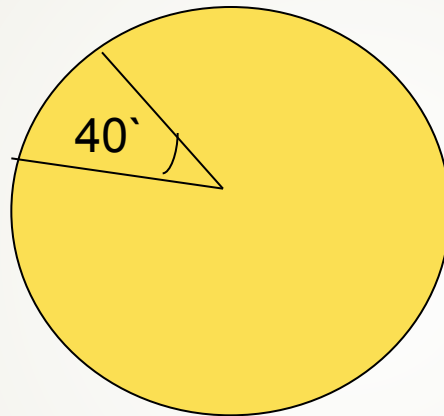
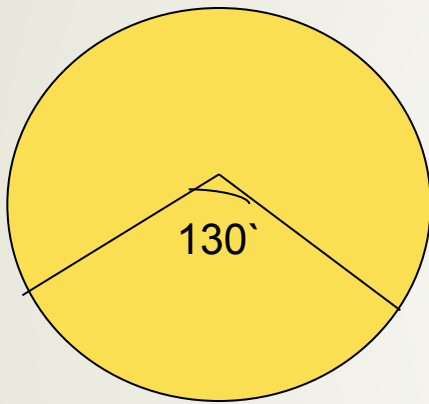
$$\angle AOB = \overset{\frown}{AB}$$



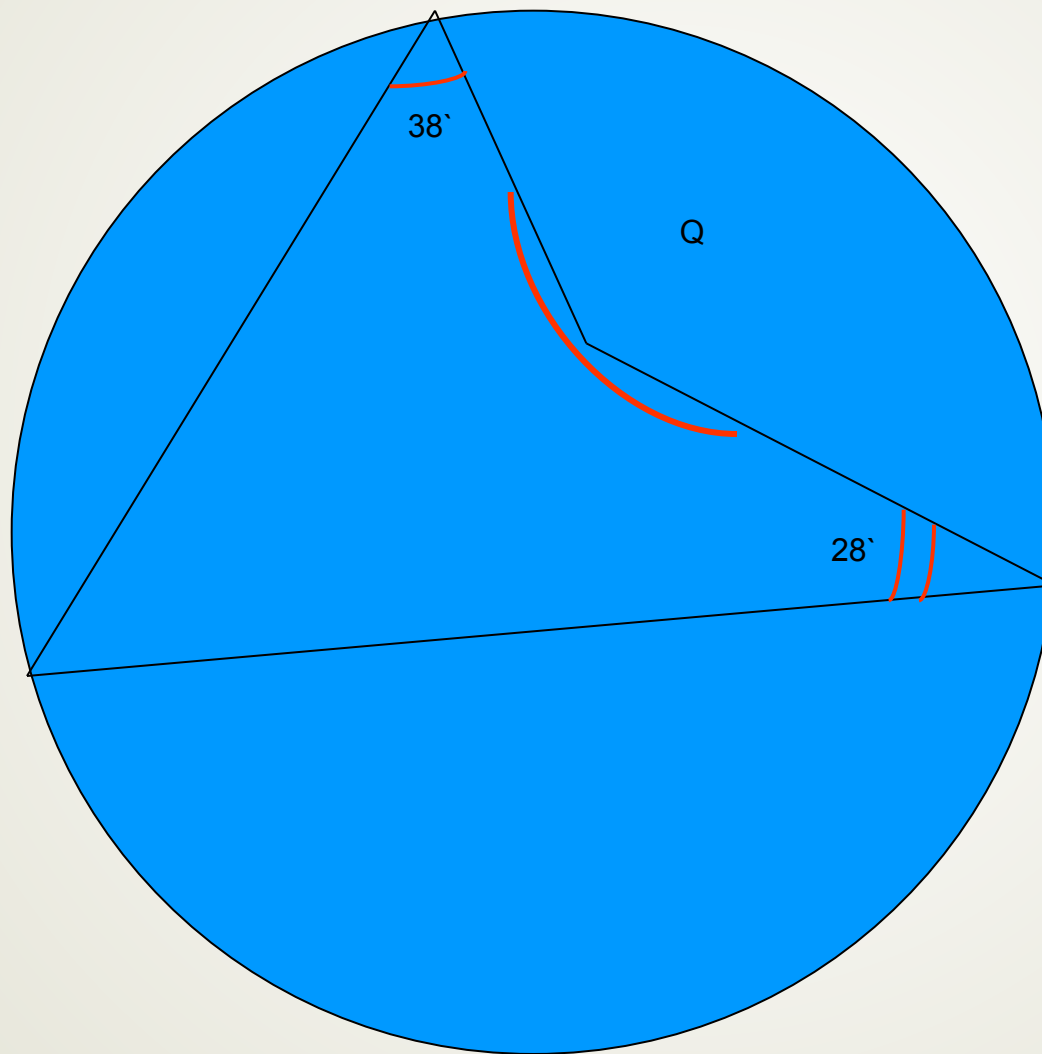
Найдите градусную меру углов:
A, b, D, R, P, n.



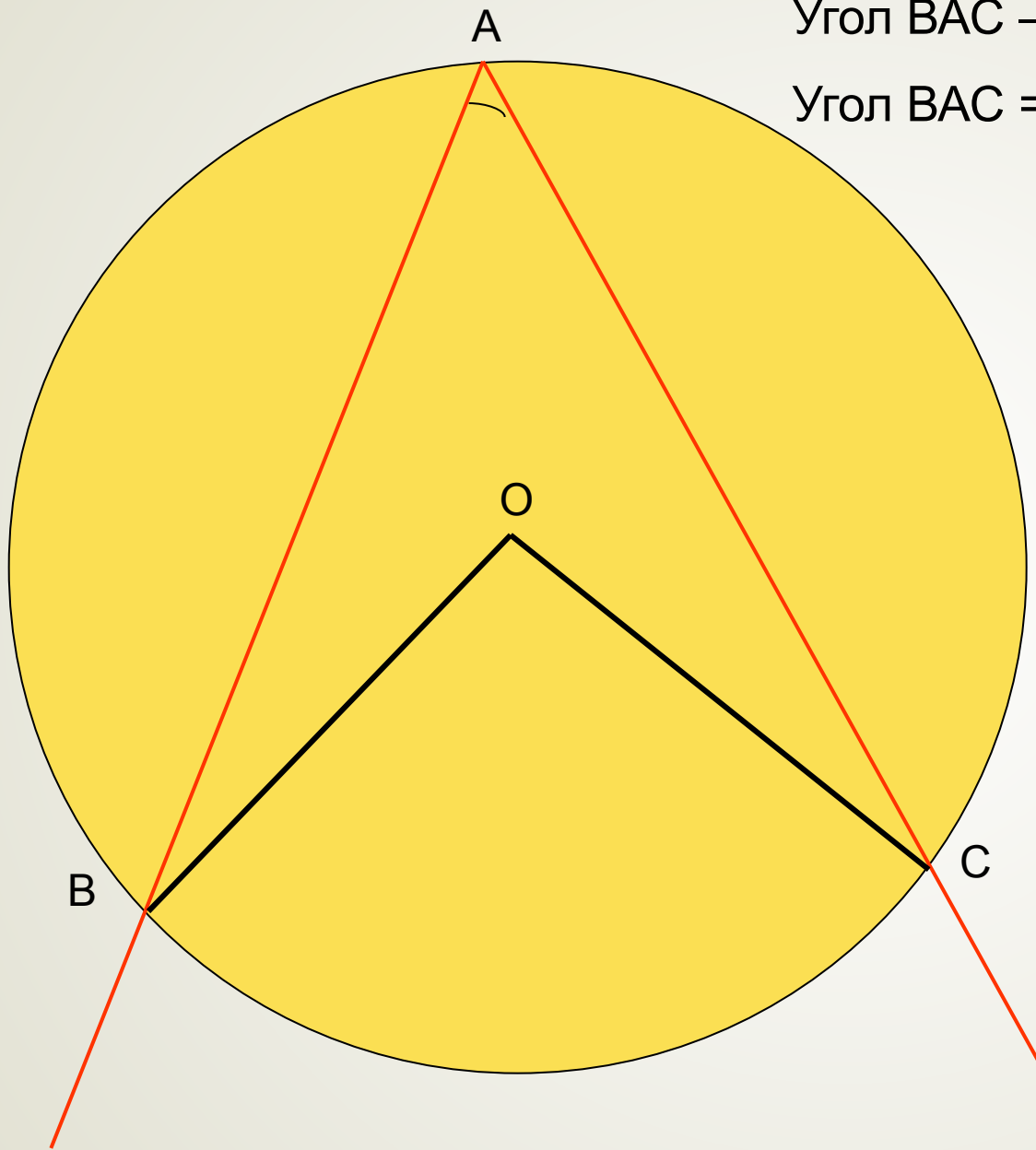
Найти градусную меру дуг,
соответствующих углам,
отмеченных на рисунках.



Решите самостоятельно.



ВПИСАННЫЕ
УГЛЫ.

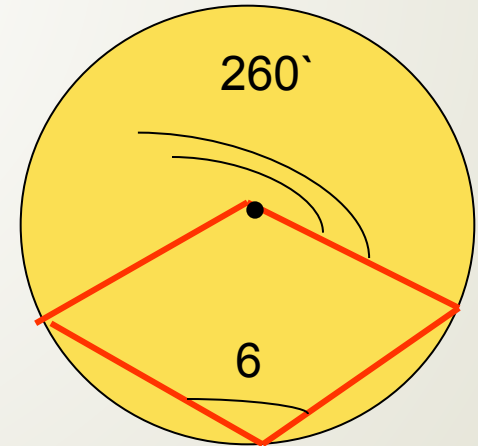
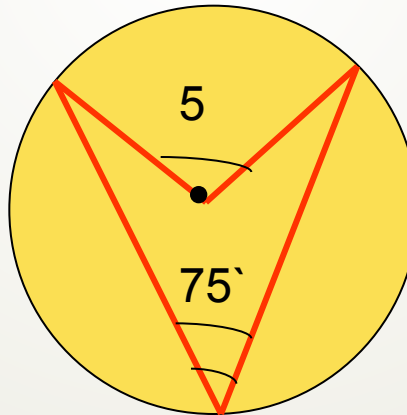
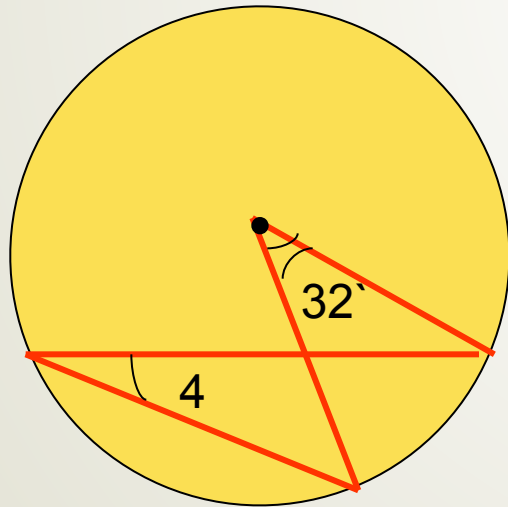
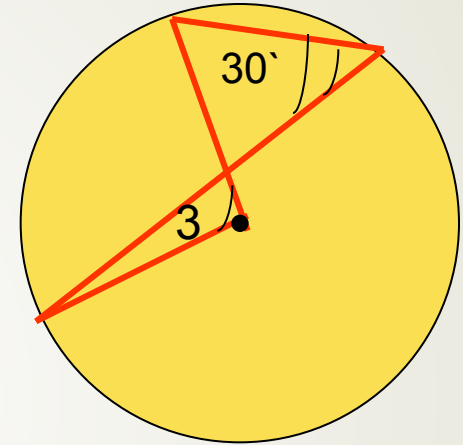
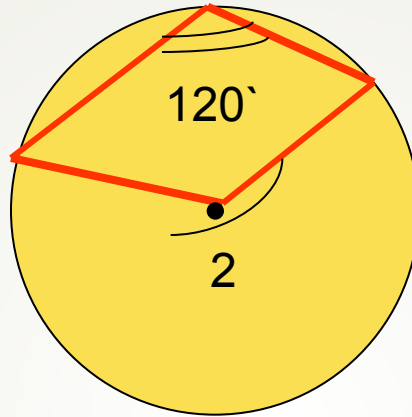
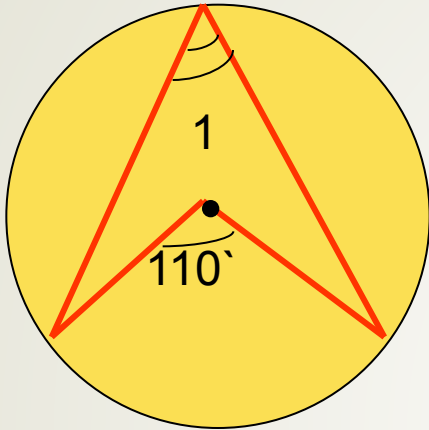


Угол ВАС – вписанный

Угол ВАС = углу ВОС = $\frac{1}{2} \angle \text{ВОС}$

Решите устно!

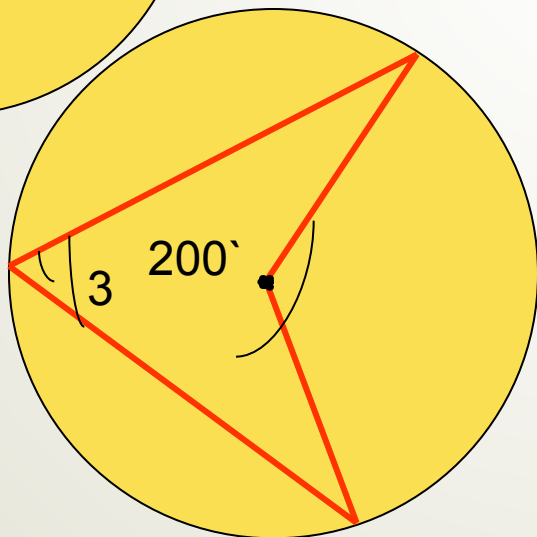
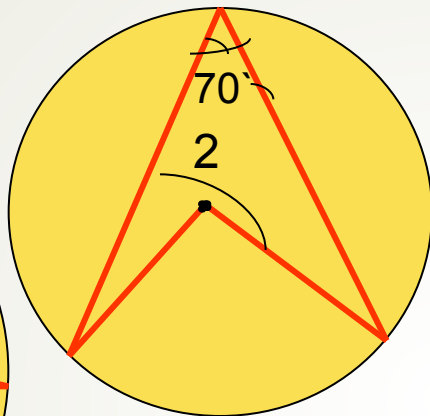
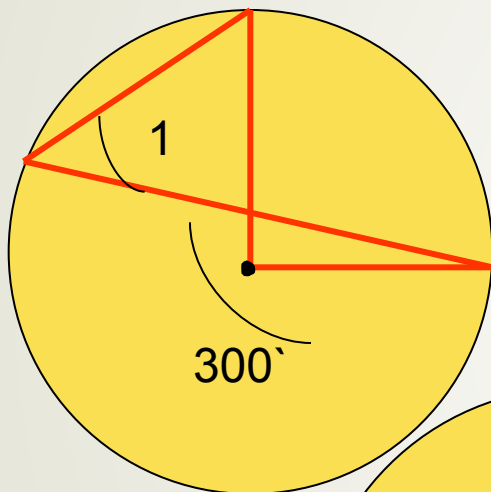
Найдите градусную меру углов 1, 2, 3, 4, 5, 6,.



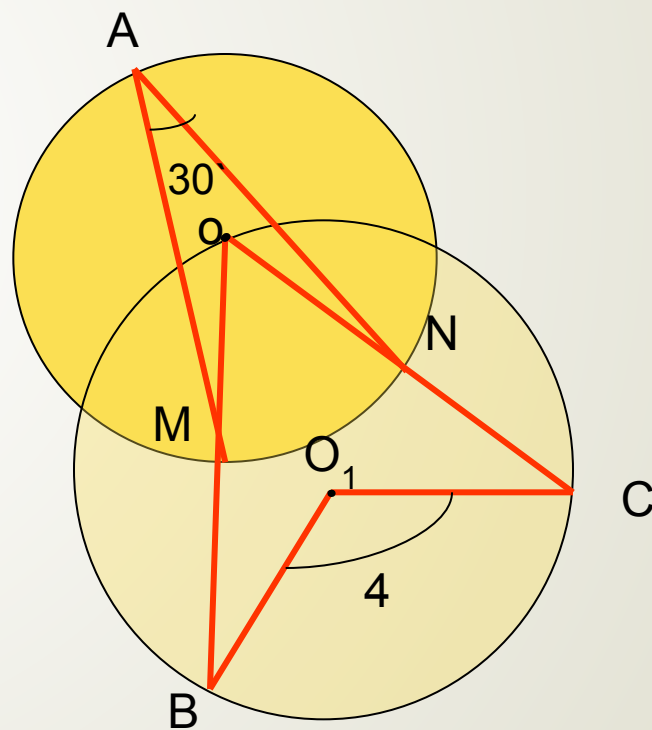
А вам слабо решить?

Найдите градусную меру углов 1, 2, 3, 4.

1 уровень:



2 уровень:



Проверьте свои решения.

1 уровень

$$\sphericalangle 1 = 60^{\circ} : 2 = 30$$

$$\sphericalangle 2 = 220^{\circ}$$

$$\sphericalangle 3 = 80^{\circ}$$

2 уровень

$$\sphericalangle MN = 60^{\circ}$$

$$\sphericalangle MON = 60^{\circ}$$

$$\sphericalangle BC = 120^{\circ}$$

$$\sphericalangle 4 = 120^{\circ}$$

МОЛОДЦЫ!!!!!!!!!!!!

Я в вас верила!