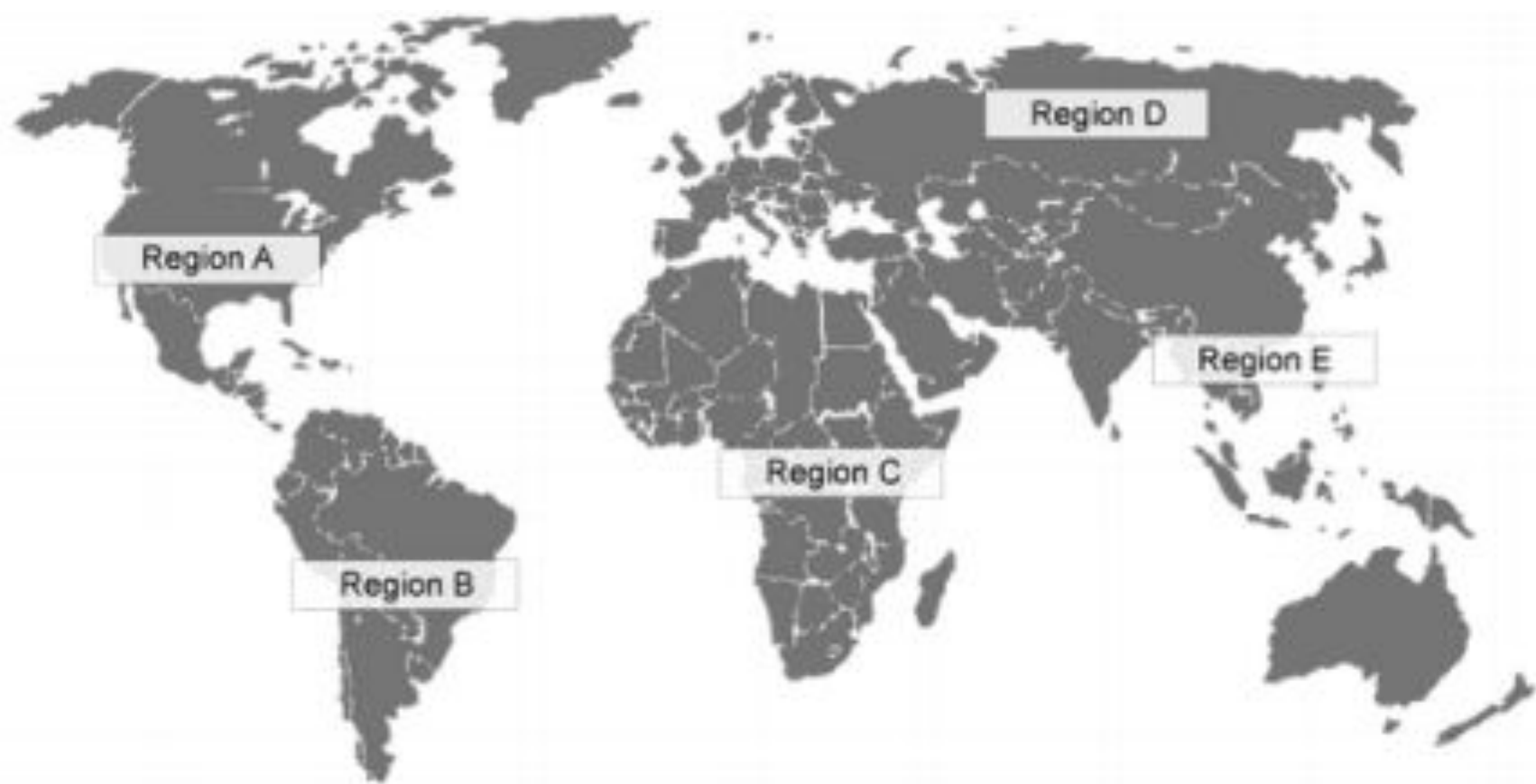


Приложение к работе

Смирнова а104



Region A

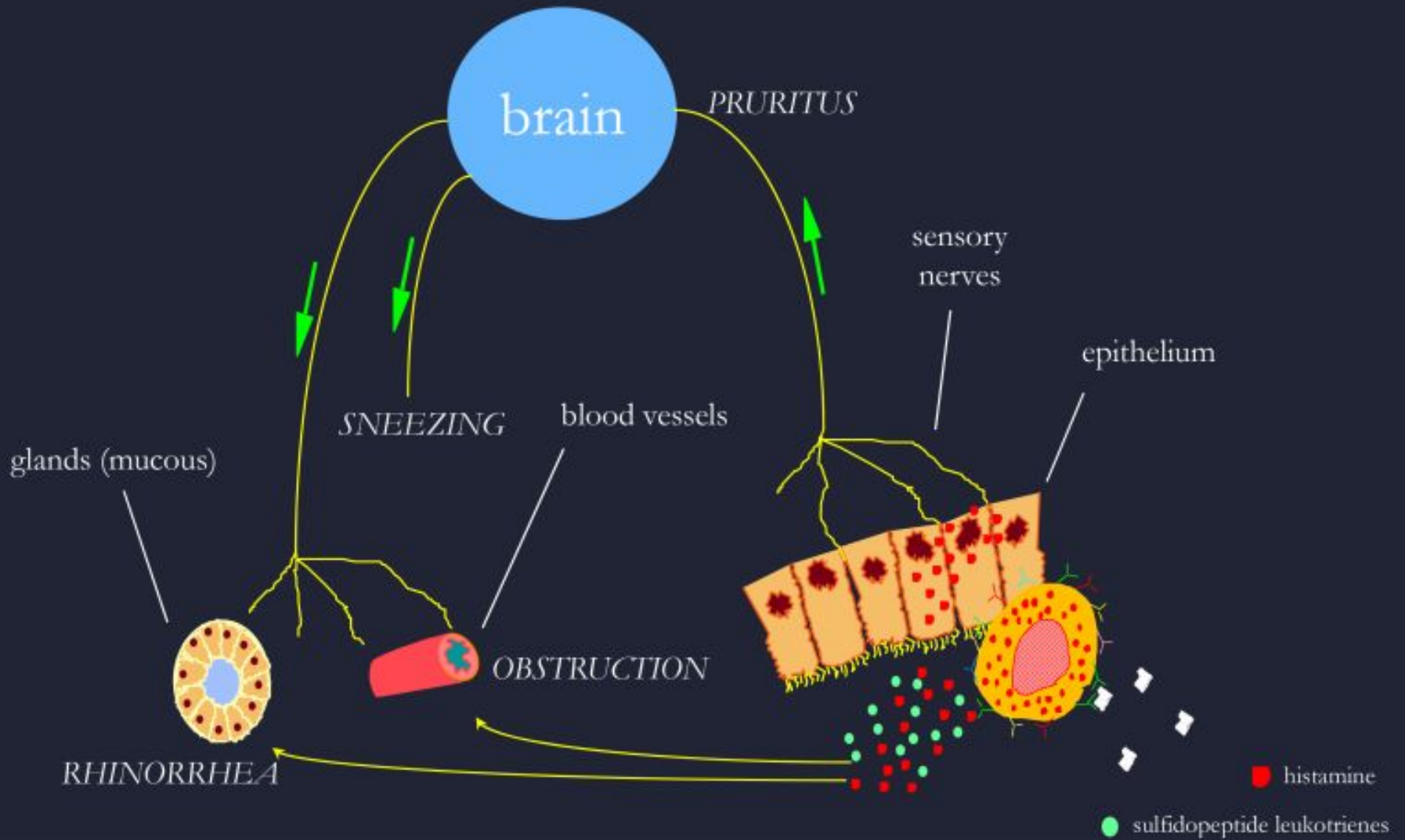
Region B

Region C

Region D

Region E

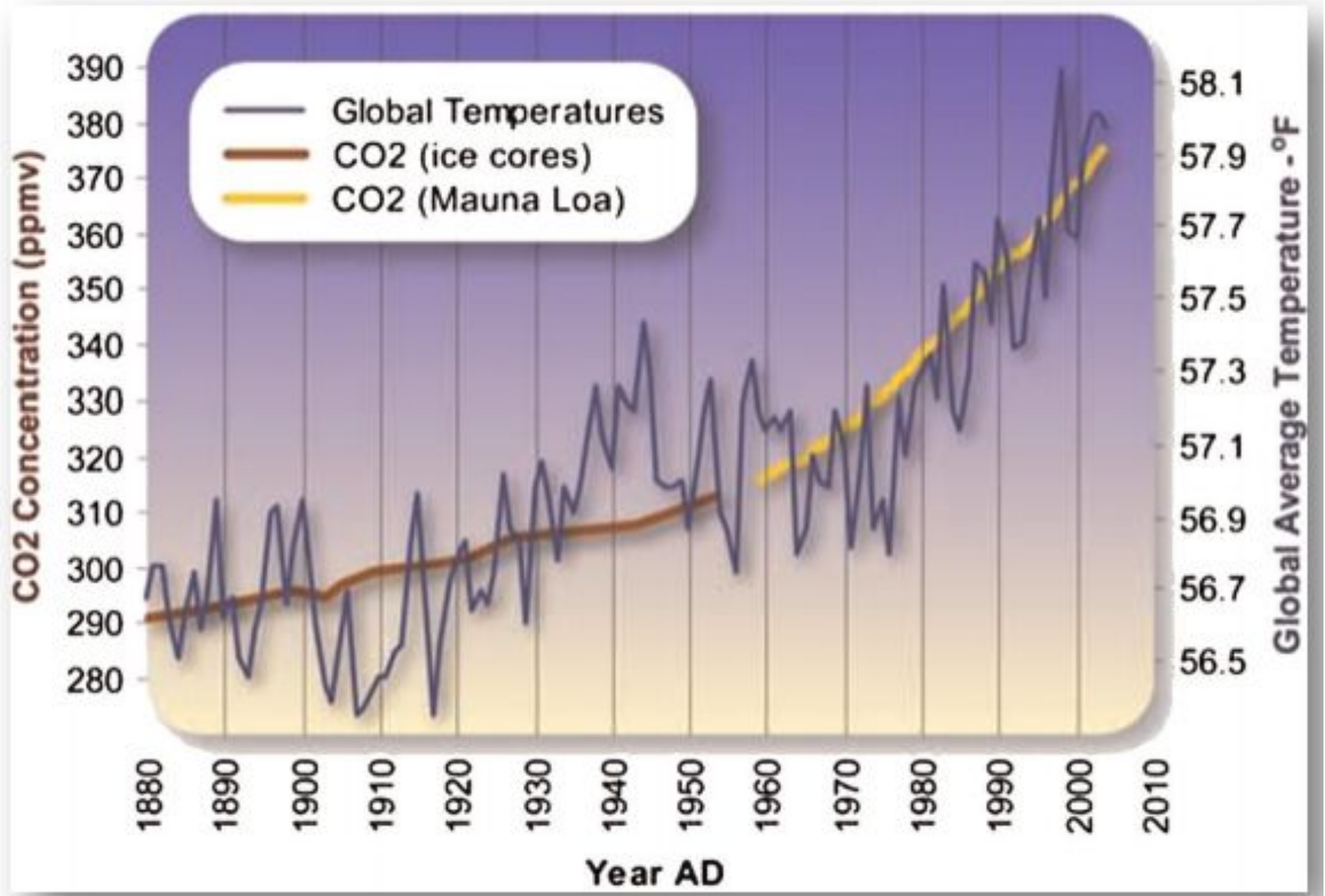
The immediate (early phase) allergic reaction in the nose



Prevalence of pollen allergy (hay fever) –global and regional–

Centre	Hay fever (over the last 15 years)	
	%	Change per year (%)
Africa (English speaking)	29.5	0.39
Africa (French speaking)	21.4	- 0.26
Asia-Pacific	23.9	0.24
Eastern Mediterranean	20.1	0.66
Indian sub-continent	15.8	0.74
Latin America	23.7	1.03
North America	33.3	- 1.12
Northern & Eastern Europe	12.3	0.19
Oceania	39.8	0.48
Western Europe	21.2	0.31
Global total	22.1	0.3

Global average temperature and carbon dioxide concentrations, 1880–2004



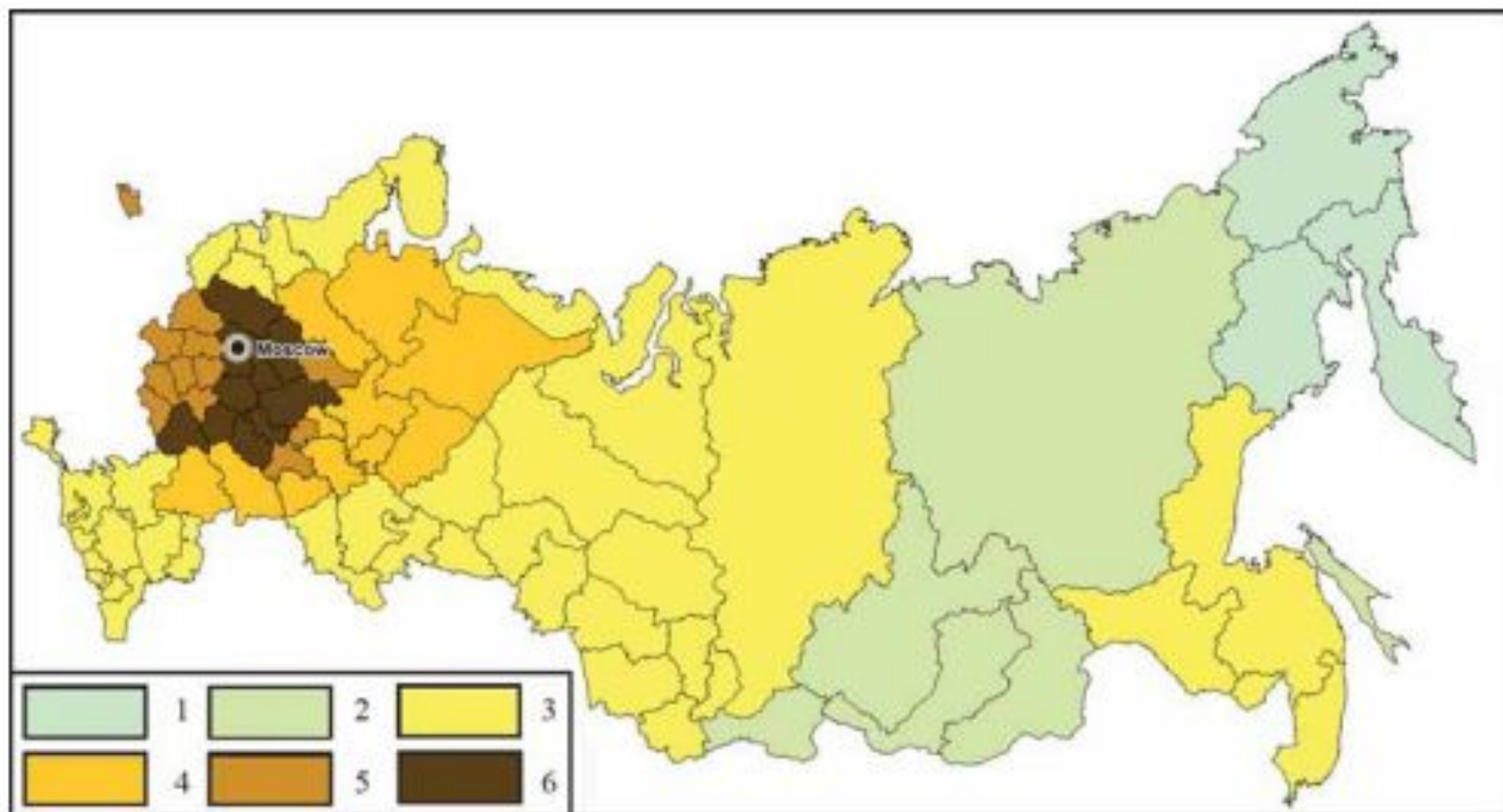


Fig. 1. Number of allergenic plant species flowering during spring:

1 – 10 and less (3), 2 – 11–15 (6), 3 – 16–20 (39), 4 – 21–25 (11), 5 – 26–30 (12), 6 – 31 and more (11).
 (In brackets – number of administrative units within the range).

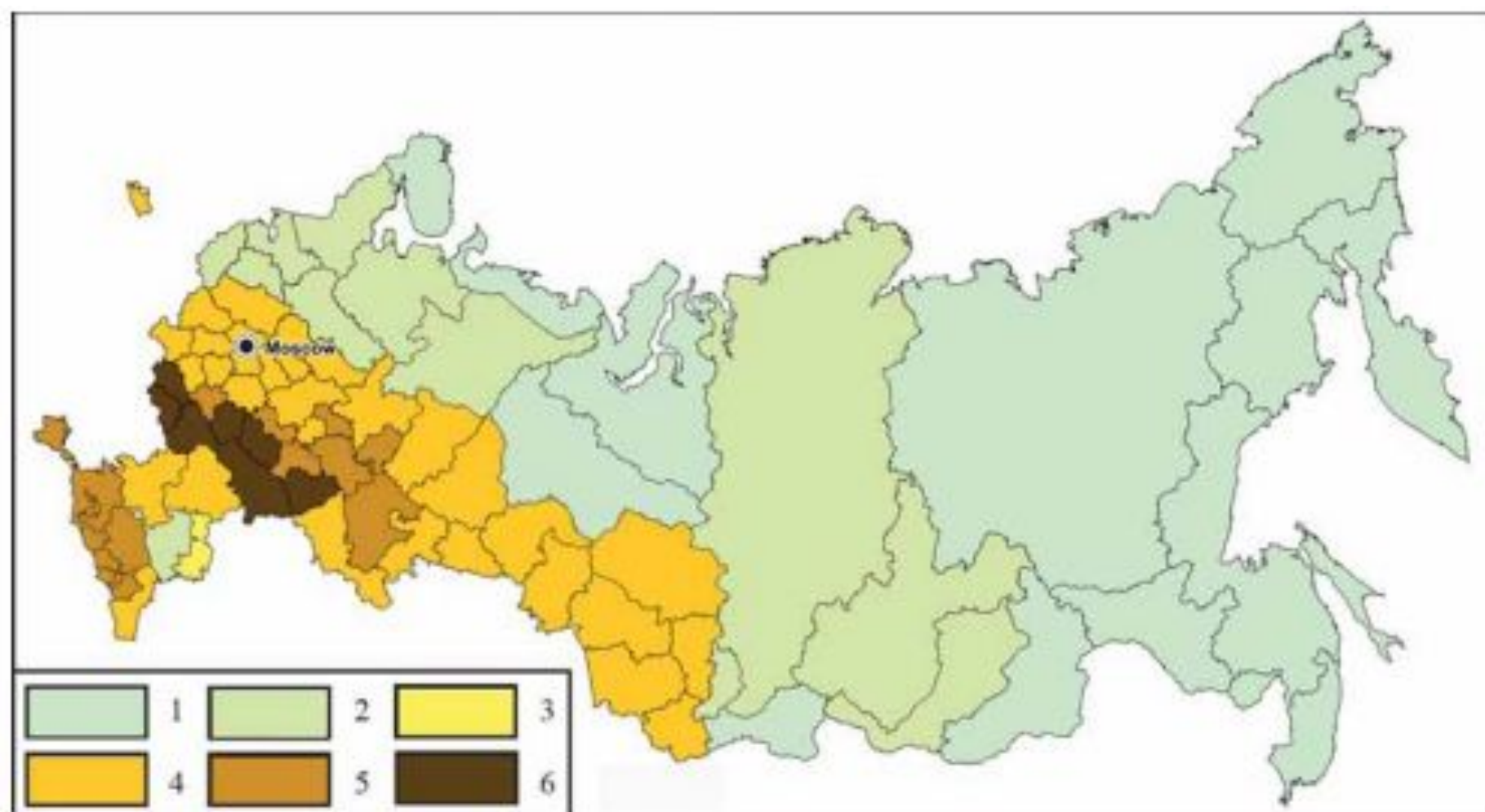


Fig. 2. Number of allergenic plant species flowering during summer:

1 – 34 and less (15), 2 – 35–39 (12), 3 – 40–44 (1), 4 – 45–49 (31), 5 – 50–54 (16), 6 – 55 and more (7).
 (In brackets – number of administrative units within the range).

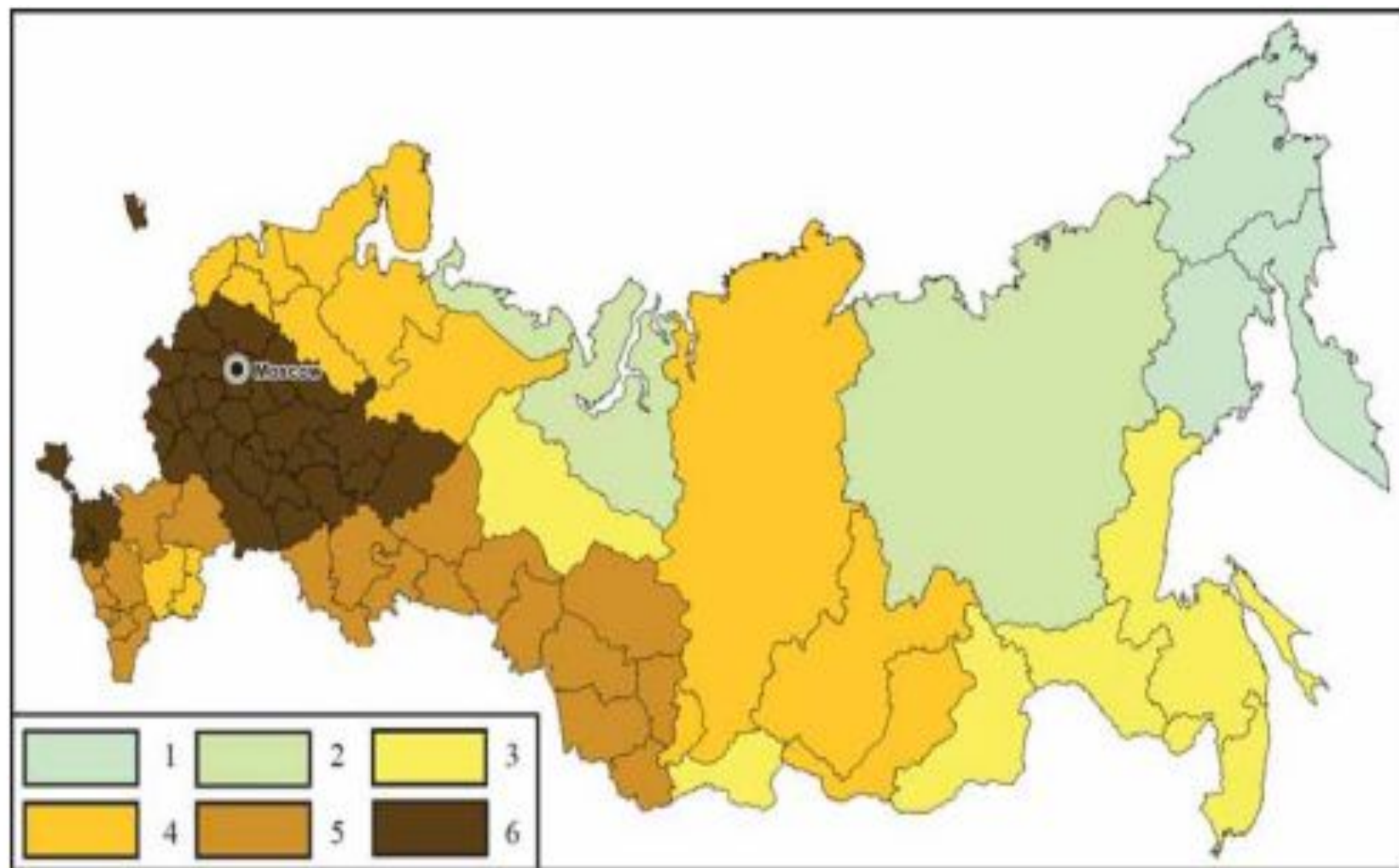


Fig. 3. Number of allergenic plant species flowering during the whole vegetation period:

1 – 30 and less (3), 2 – 31–40 (3), 3 – 41–50 (8), 4 – 51–60 (14), 5 – 61–70 (21), 6 – 71 and more (33).

(In brackets – number of administrative units within the range).

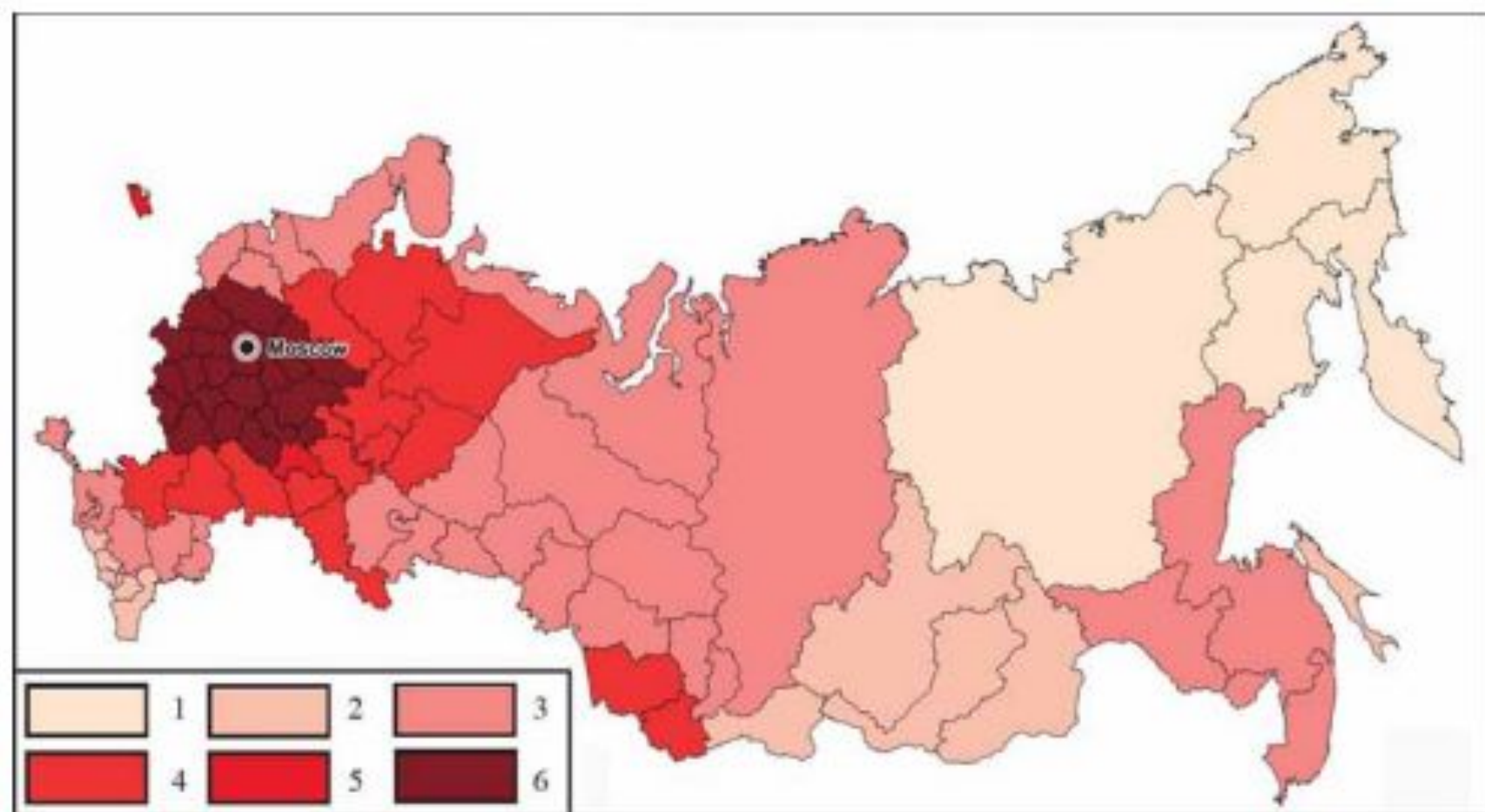


Fig. 4. Summarized "allergenic index" in spring:

1 – 30 and less (4), 2 – 31–40 (11), 3 – 41–50 (29), 4 – 51–60 (15), 5 – 61–70 (2), 6 – 71 and more (21).
 (In brackets – number of administrative units within the range).

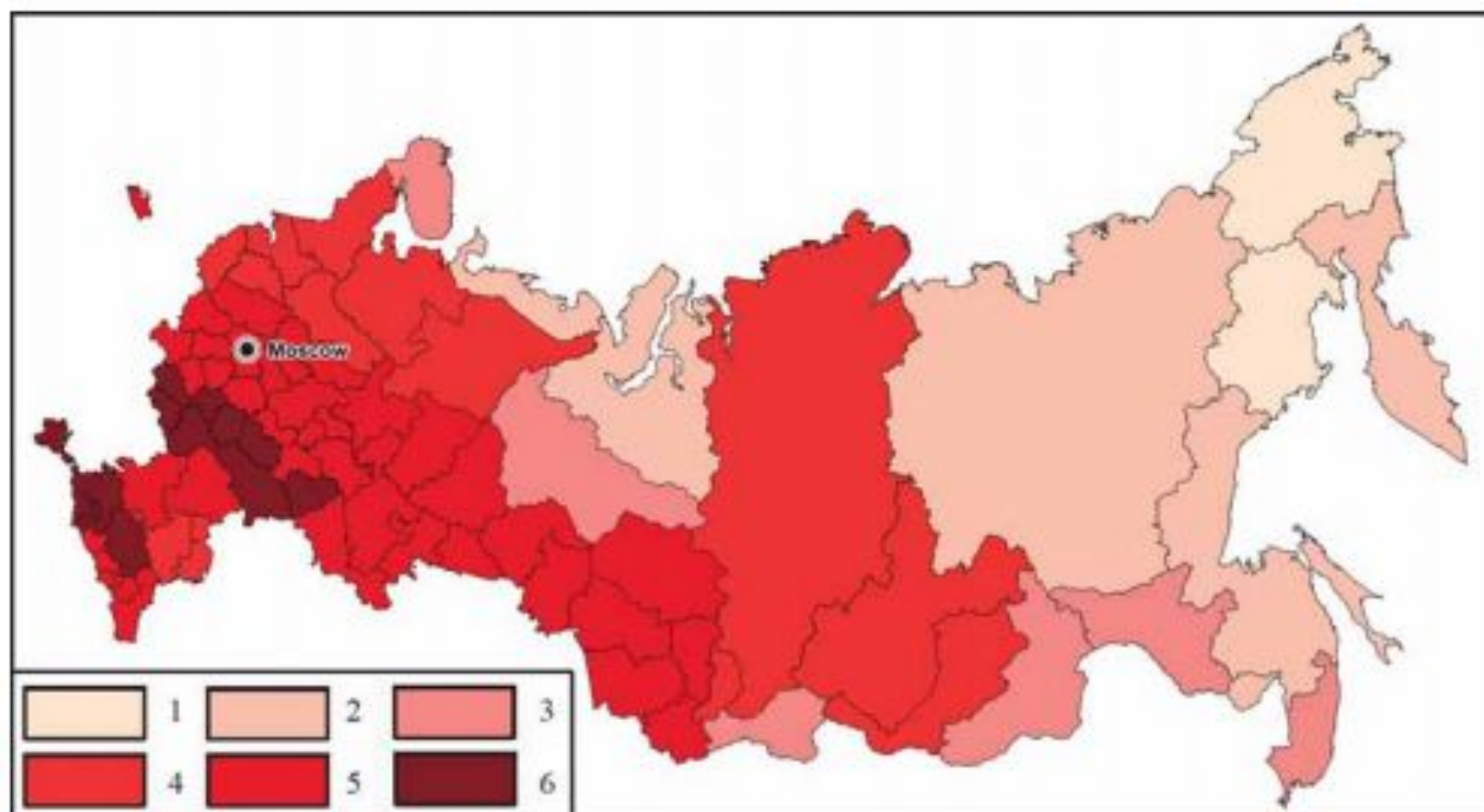


Fig. 5. Summarized "allergenic index" in summer:

1 – 40 and less (2), 2 – 41–60 (7), 3 – 61–80 (6), 4 – 81–100 (13), 5 – 101–120 (42), 6 – 121 and more (12).
 (In brackets – number of administrative units within the range).

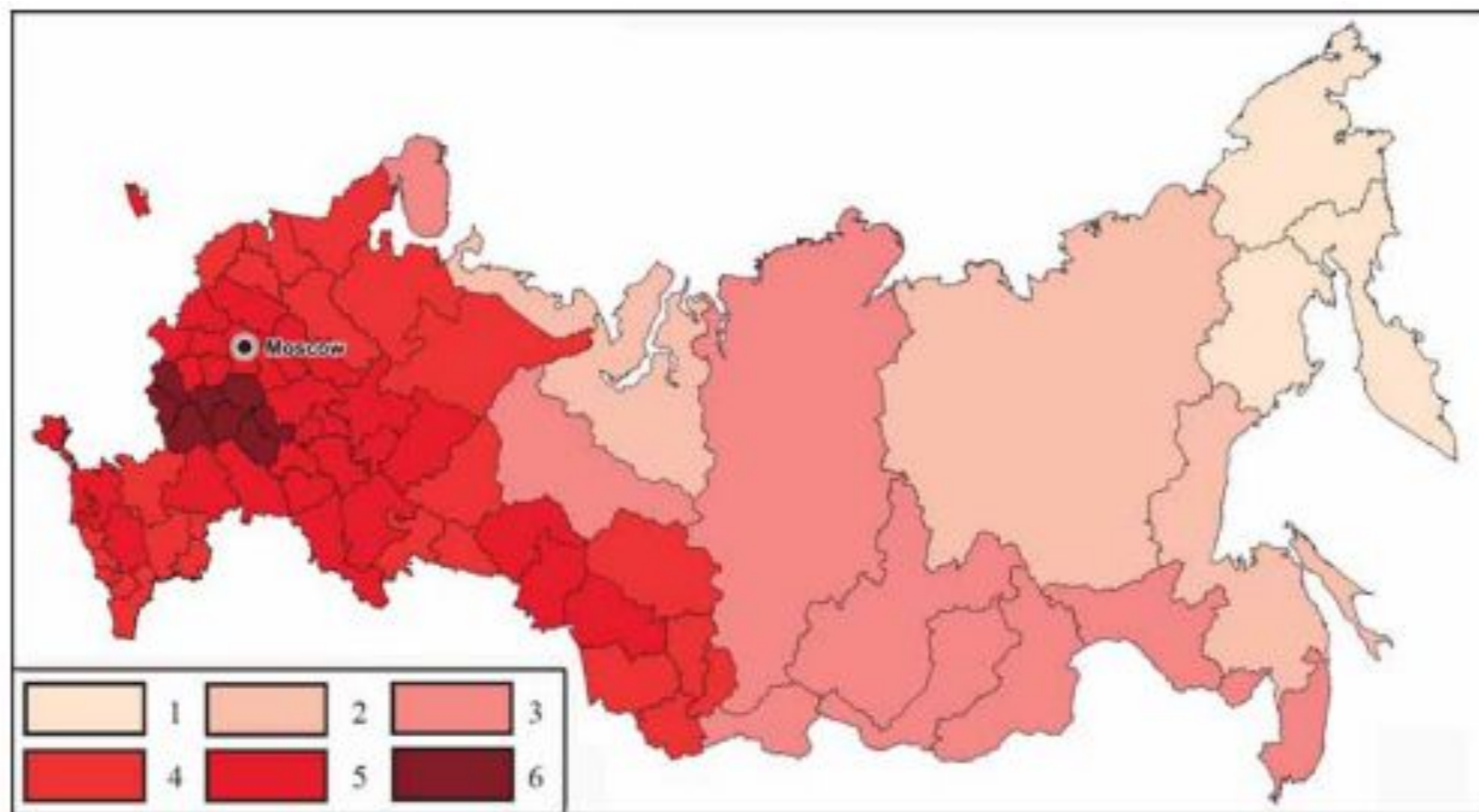


Fig. 6. Summarized "allergenic index" in the whole vegetation period:

1 – 70 and less (3), 2 – 71–100 (5), 3 – 101–130 (10), 4 – 131–160 (24), 5 – 161–190 (32), 6 – 191 and more (8).
(In brackets – number of administrative units within the range).