

A tropical beach scene at sunset. The sky is a mix of orange, yellow, and light blue. Several palm trees are visible, some leaning over the water. The water is calm and reflects the sky. A sandy beach is visible in the foreground. The text is overlaid on the image.

Часть 1

**РАЗНООБРАЗИЕ
БЕСПОЗВОНОЧНЫХ
ЖИВОТНЫХ
ВИКТОРИНА**

A tropical beach scene at sunset. The sky is a warm orange and yellow, with silhouettes of palm trees against it. The water is calm and reflects the light. The foreground shows a sandy beach and more palm trees.


1 ТУР

*Зоологически
е задачи*

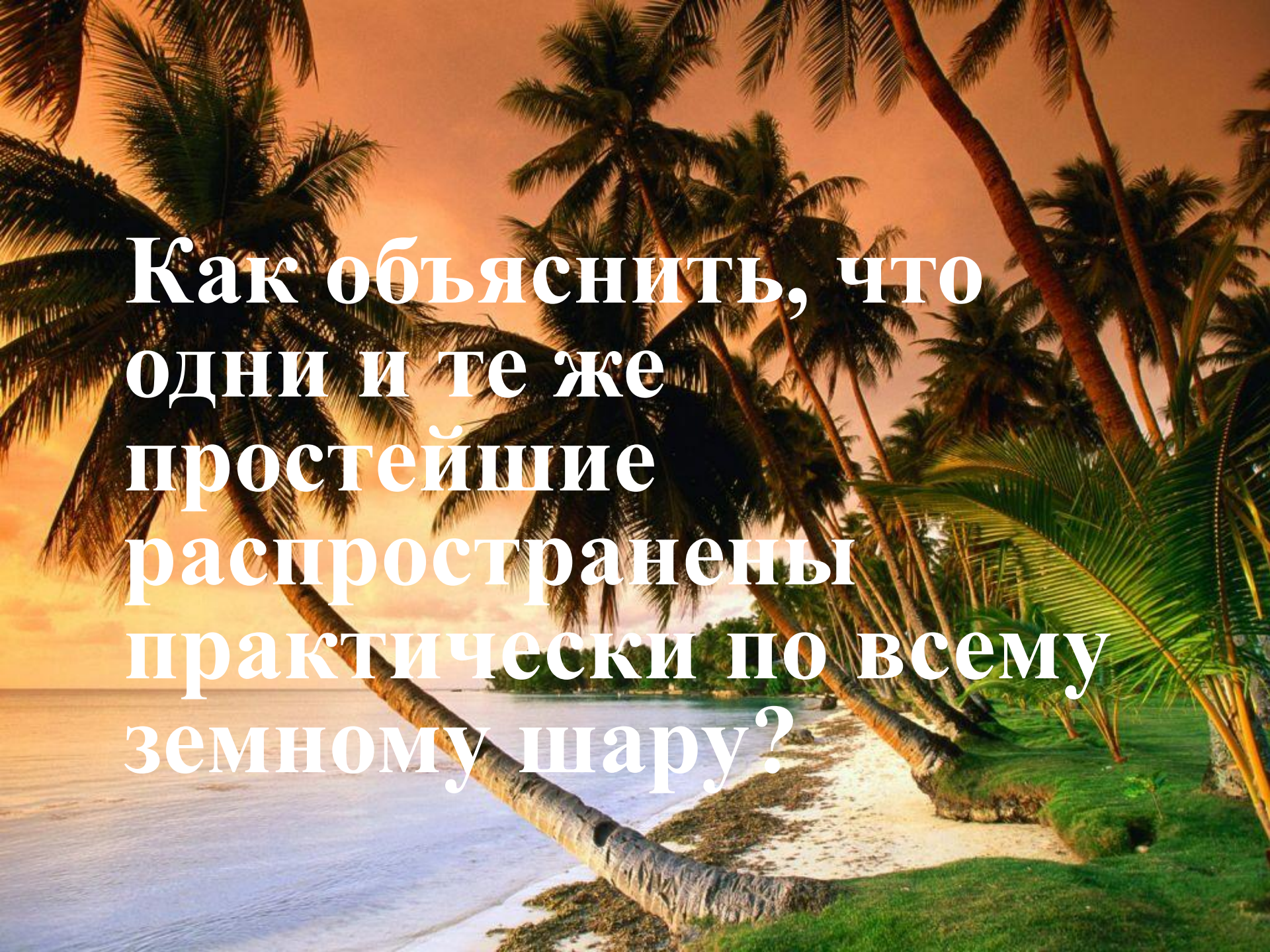
Почему простейшие
практически не
изменились за много
миллионов лет?

A tropical beach scene at sunset. The sky is a warm orange and yellow, with silhouettes of palm trees against it. The ocean is calm, meeting a sandy beach. In the foreground, a large palm tree trunk leans over the water. The text "Есть ли у простейших рефлексы?" is overlaid in white, serif font.

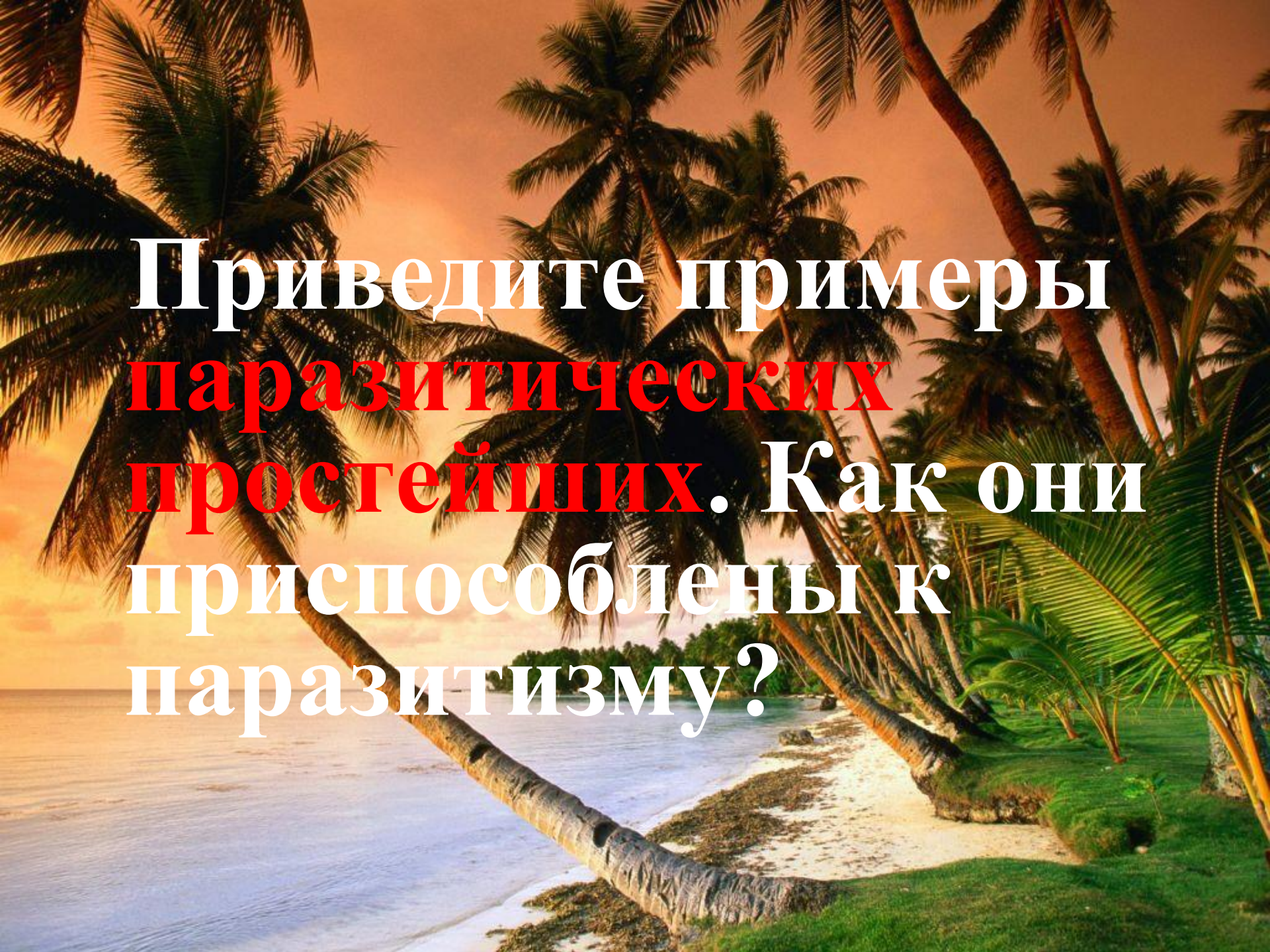
Есть ли у простейших рефлексы?

A tropical beach scene at sunset. The sky is a warm orange and yellow, with silhouettes of palm trees against it. The ocean is calm, and a sandy beach is visible in the foreground. The text is overlaid in the center in a white, serif font.

Есть ли сходства и различия между спорой и цистой? Ответ объясните.

A tropical beach scene at sunset. The sky is a warm orange and yellow, with palm trees silhouetted against it. The ocean is calm, and the beach is sandy with some seaweed. The text is overlaid in white, serif font.

**Как объяснить, что
одни и те же
простейшие
распространены
практически по всему
земному шару?**

A tropical beach scene at sunset. The sky is a mix of orange, yellow, and light blue. Several palm trees are visible, some leaning over the water. The water is calm and reflects the sunset colors. The beach is sandy and has some green grass in the foreground.

**Приведите примеры
паразитических
простейших. Как они
приспособлены к
паразитизму?**

A tropical beach scene at sunset. The sky is a warm orange and yellow, with silhouettes of palm trees against it. The ocean is calm, and a small island is visible in the distance. The foreground shows a sandy beach with some seaweed and a large palm tree trunk leaning over the water.

**Назовите признаки
сходства и отличия
фораминиферы и
эвглены зеленой.**

A tropical beach scene at sunset. The sky is a mix of orange, yellow, and light blue. Several palm trees are visible, some leaning over the water. The water is calm and reflects the sunset colors. The text is overlaid on the image.

Почему губки ведут
сидячий образ жизни?

A tropical beach scene at sunset. The sky is a mix of orange, yellow, and light blue. Several palm trees are visible, some leaning over the water. The water is calm and reflects the sky. The text is overlaid on the image.

**Как происходит
фильтрация воды в
теле губки?**

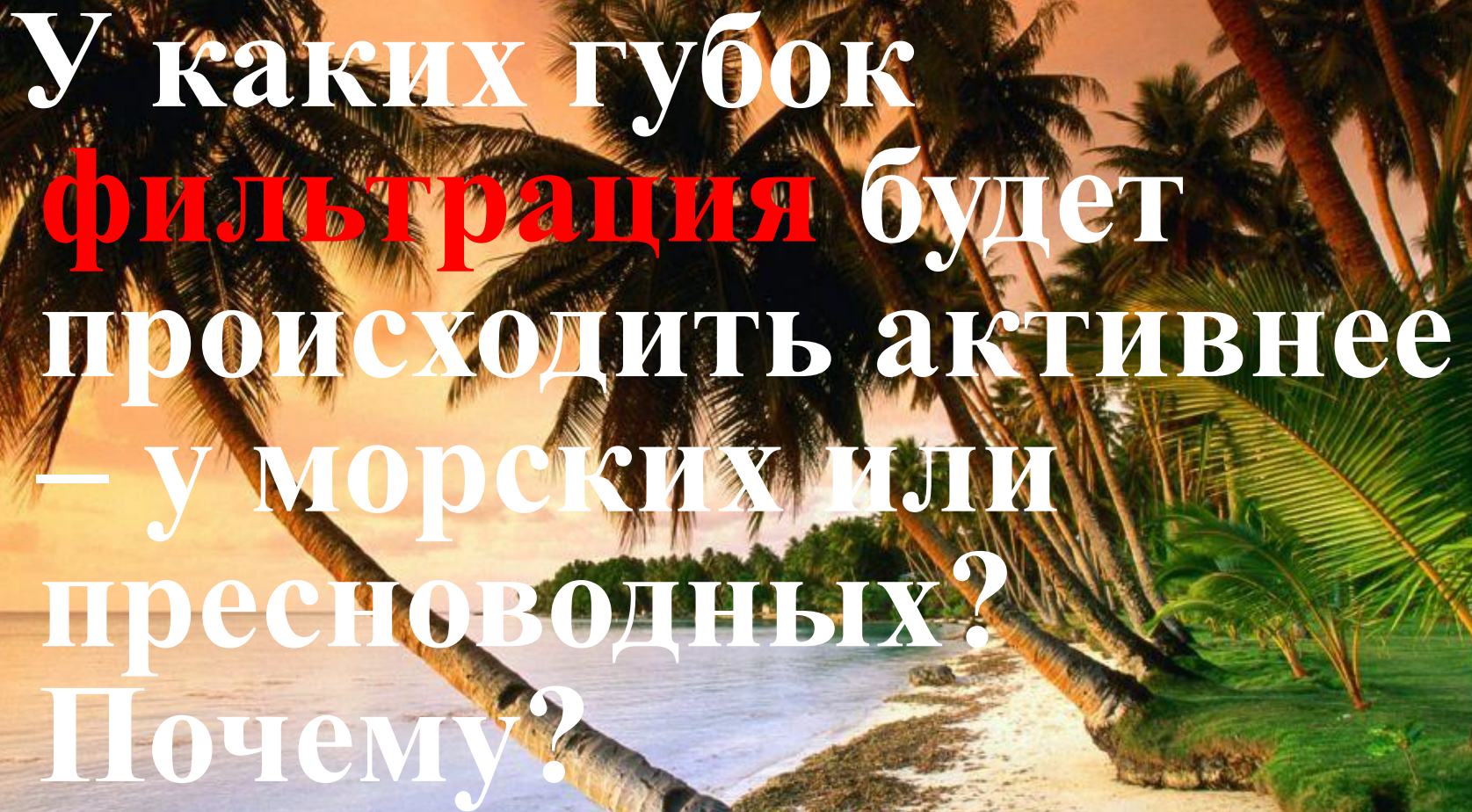
A tropical beach scene at sunset. The sky is a warm orange and yellow, with silhouettes of palm trees against it. The ocean is calm, and a sandy beach is visible in the foreground. The text is overlaid on the image.

**Возможна ли
различная окраска
тела у губок?
Почему?**

A tropical beach scene at sunset. The sky is a warm orange and yellow, with the sun low on the horizon. Several palm trees are silhouetted against the sky, some leaning over the water. The foreground shows a sandy beach and green grass. The text is overlaid on the left side of the image.

Что такое
регенерация?

Приведите пример
регенерации у
известных вам
беспозвоночных
животных

A tropical beach scene at sunset. The sky is a warm orange and yellow, with palm trees silhouetted against it. The ocean is calm, and a sandy beach is visible in the foreground. The text is overlaid on the image.


У каких губок
фильтрация будет
происходить активнее
– у морских или
пресноводных?
Почему?

A tropical beach scene at sunset. The sky is a mix of orange, yellow, and light blue. Several palm trees are visible, some leaning over the water. The water is calm and reflects the sunset colors. The beach is sandy and has some greenery. The text is overlaid on the image.

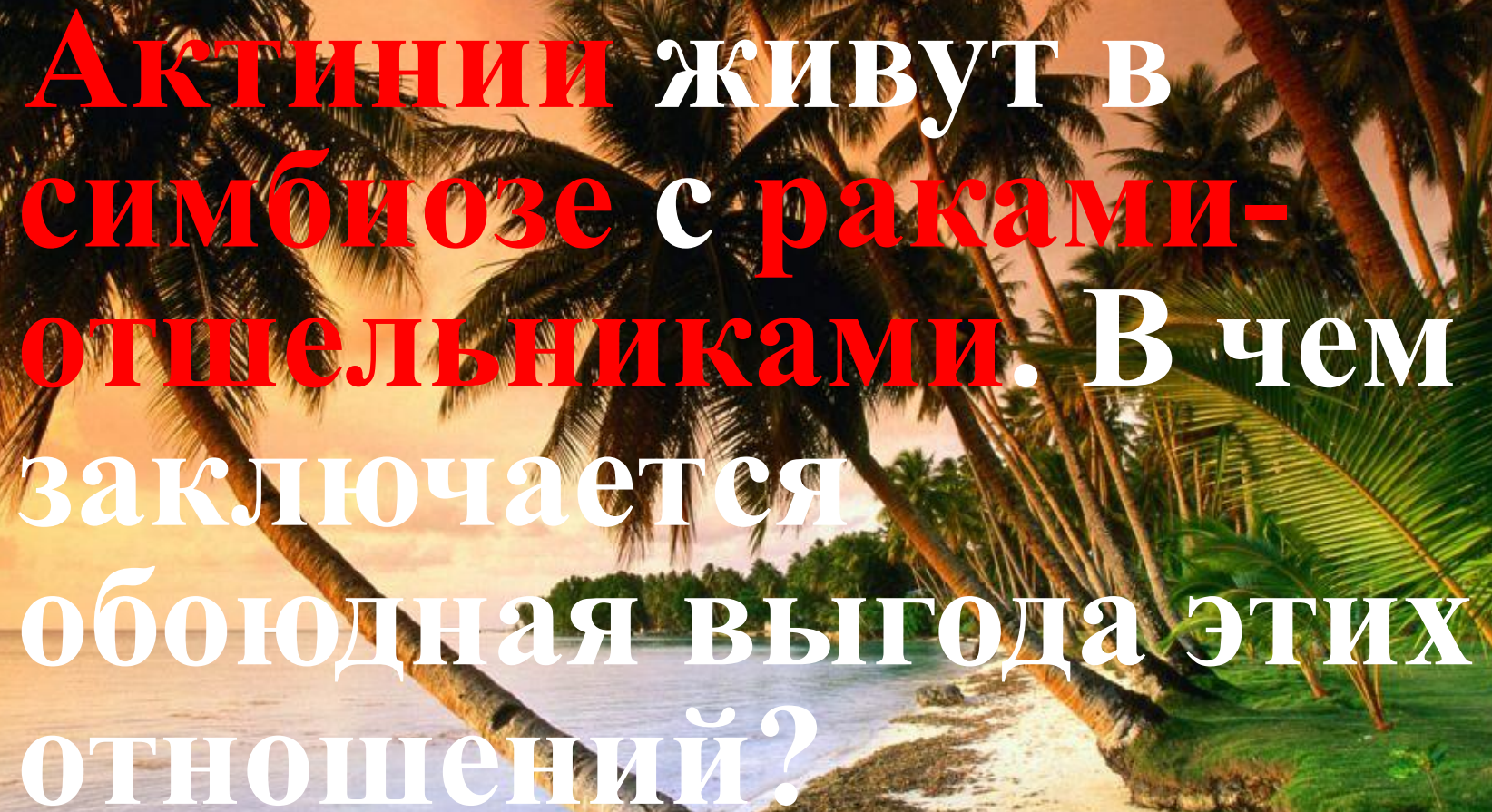
**Как в древности
люди использовали
представителей типа
Губки?**

A tropical beach scene at sunset. The sky is a mix of orange, yellow, and light blue. Several palm trees are visible, some leaning over the water. The water is calm and reflects the sky. The text is overlaid on the image.

Как отличить
передний **конец** тела
гидры от заднего?

A tropical beach scene at sunset. The sky is a mix of orange, yellow, and light blue. In the foreground, several palm trees lean over the water. The water is calm and reflects the sunset colors. In the distance, a small island with more palm trees is visible. The text is overlaid on the image, with the first part in white and the rest in red.

**В чем заключается
разница между
барьерным рифом и
атоллом?**

A tropical beach scene at sunset. The sky is a warm orange and yellow, with the sun low on the horizon. Several palm trees are scattered across the landscape, some leaning over the water. The water is calm and reflects the sunset colors. The foreground shows a sandy beach and some green grass. The text is overlaid on the image, with the words "Актинии" and "отшельниками" in red, and the rest in white.


Актинии живут в симбиозе с раками-отшельниками. В чем заключается обоюдная выгода этих отношений?

A tropical beach scene at sunset. The sky is a mix of orange, yellow, and light blue. Several palm trees are visible, some leaning over the water. The water is calm and reflects the sunset colors. The text is overlaid on the image.

**По какому признаку
кишечнополостные
более прогрессивны,
чем простейшие?**

A tropical beach scene at sunset. The sky is a warm orange and yellow, with silhouettes of palm trees against it. The ocean is calm, and a sandy beach is visible in the foreground. The text is overlaid on the image.

О каком животном
писал А.К. Дойл в
рассказе «Львиная
грива»?

A tropical beach scene at sunset. The sky is a mix of orange, yellow, and light blue. Several palm trees are visible, some leaning over the water. The water is calm and reflects the sunset colors. The text is overlaid on the image.

**Какая особенность
кишечнополостных
позволила им выжить
до сегодняшнего
времени?**

A tropical beach scene at sunset. The sky is a warm orange and yellow, with silhouettes of palm trees against it. The ocean is calm, and a sandy beach is visible in the foreground. The text is overlaid on the image.

Что такое
элефантиаз? Какие
животные служат
причиной
заболевания данной
болезнью?



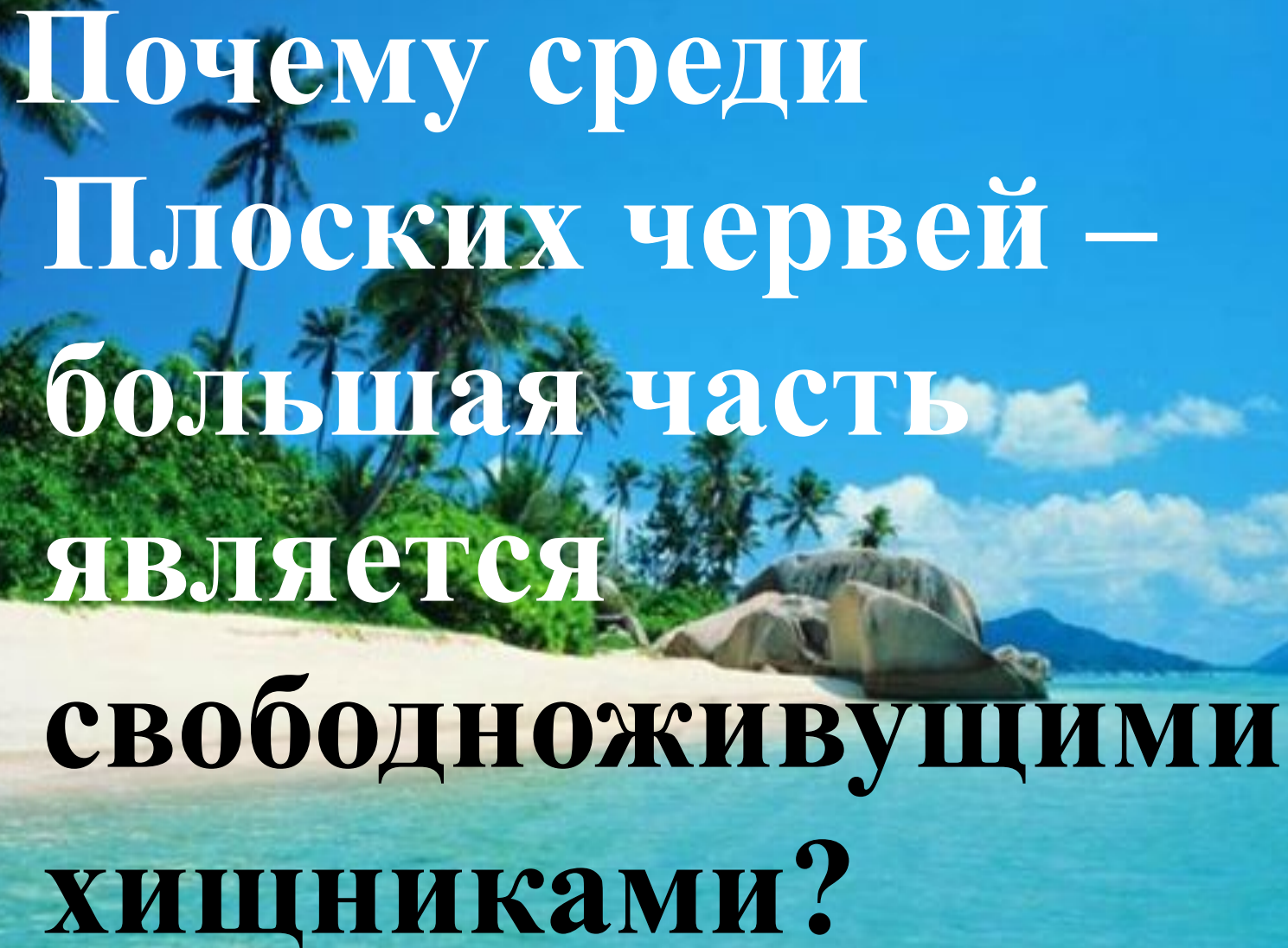
Возбудители филяриоза (элефантиаза) - паразитические черви филярии - проникают в организм человека при укусах москитов и чаще всего поражают лимфатические узлы паха и подмышечных впадин. Возникающие при болезни отеки конечностей, половых органов и молочной железы могут до неузнаваемости обезобразить внешность

A tropical beach scene at sunset. The sky is a warm orange and yellow, reflecting on the calm water. Several palm trees are leaning over the white sand beach. The text is overlaid in the center in a white, serif font.

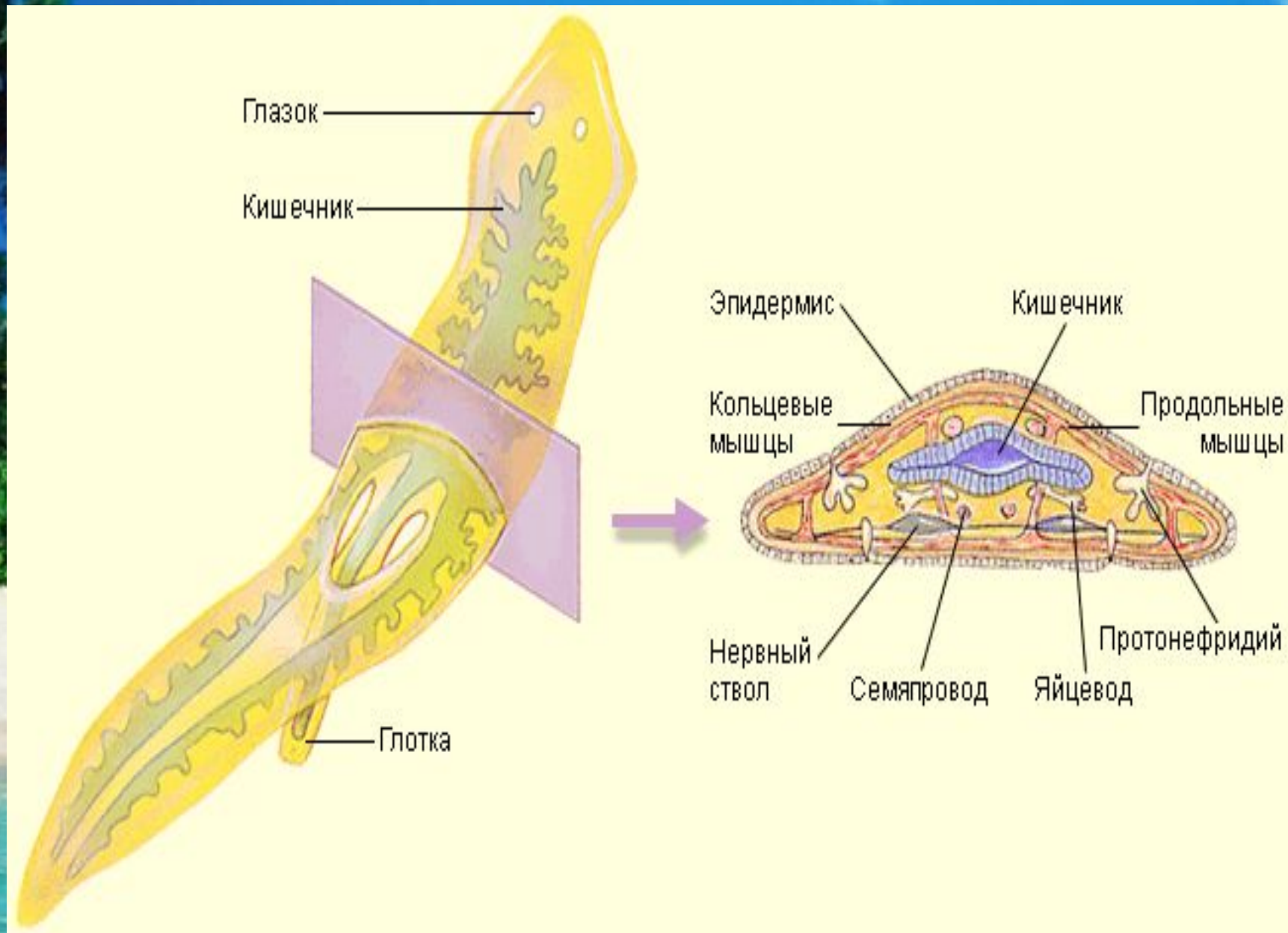
Какого червя
называют
«вооруженной
угрозой» и почему?



**Так
называют
свиного
цепня**

A vibrant tropical beach scene with a clear blue sky, turquoise water, white sand, and lush greenery with palm trees. Large rocks are scattered on the shore.

**Почему среди
Плоских червей –
большая часть
является
свободноживущими
хищниками?**




A tropical beach scene at sunset. The sky is a mix of orange, yellow, and light blue. Several palm trees are leaning over the water. The water is calm and reflects the sky. The beach is sandy and has some seaweed. The overall mood is peaceful and scenic.

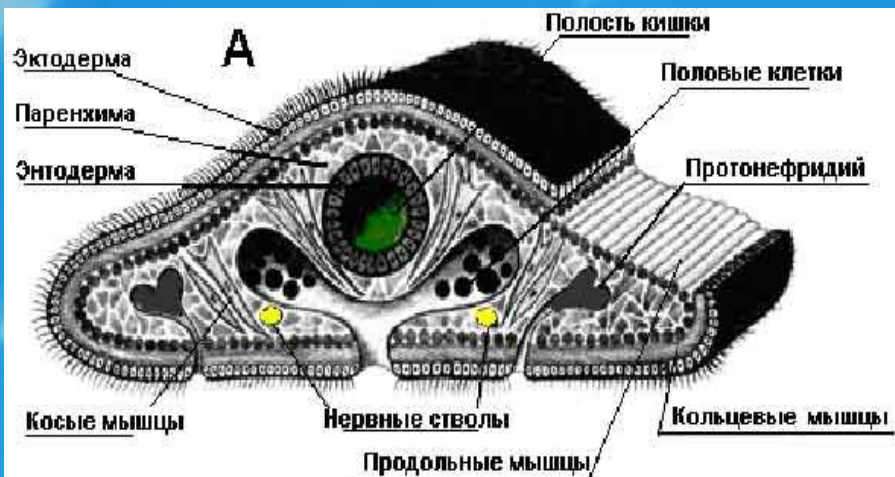
**У каких червей
имеются анальные и
головная лопасти?**



- Анальные и головная лопасти имеются у представителей типа **кольчатые черви**.

A tropical beach scene at sunset. The sky is a mix of orange, yellow, and light blue. Several palm trees are visible, some leaning over the water. The water is calm and reflects the sky. The beach is sandy and has some seaweed. The text is overlaid on the image.

**По каким признакам
мы можем определить
Плоских червей?**



НЕРВНАЯ СИСТЕМА

Головной нервный узел

Нервные стволы

ПИЩЕВАРИТЕЛЬНАЯ СИСТЕМА

Глотка

Замкнутый кишечник

ВЫДЕЛИТЕЛЬНАЯ СИСТЕМА

Протонефридии

Б

ПОЛОВАЯ СИСТЕМА

Семенники

Яичник

Желточники

Совокупительный орган

Половое отверстие

