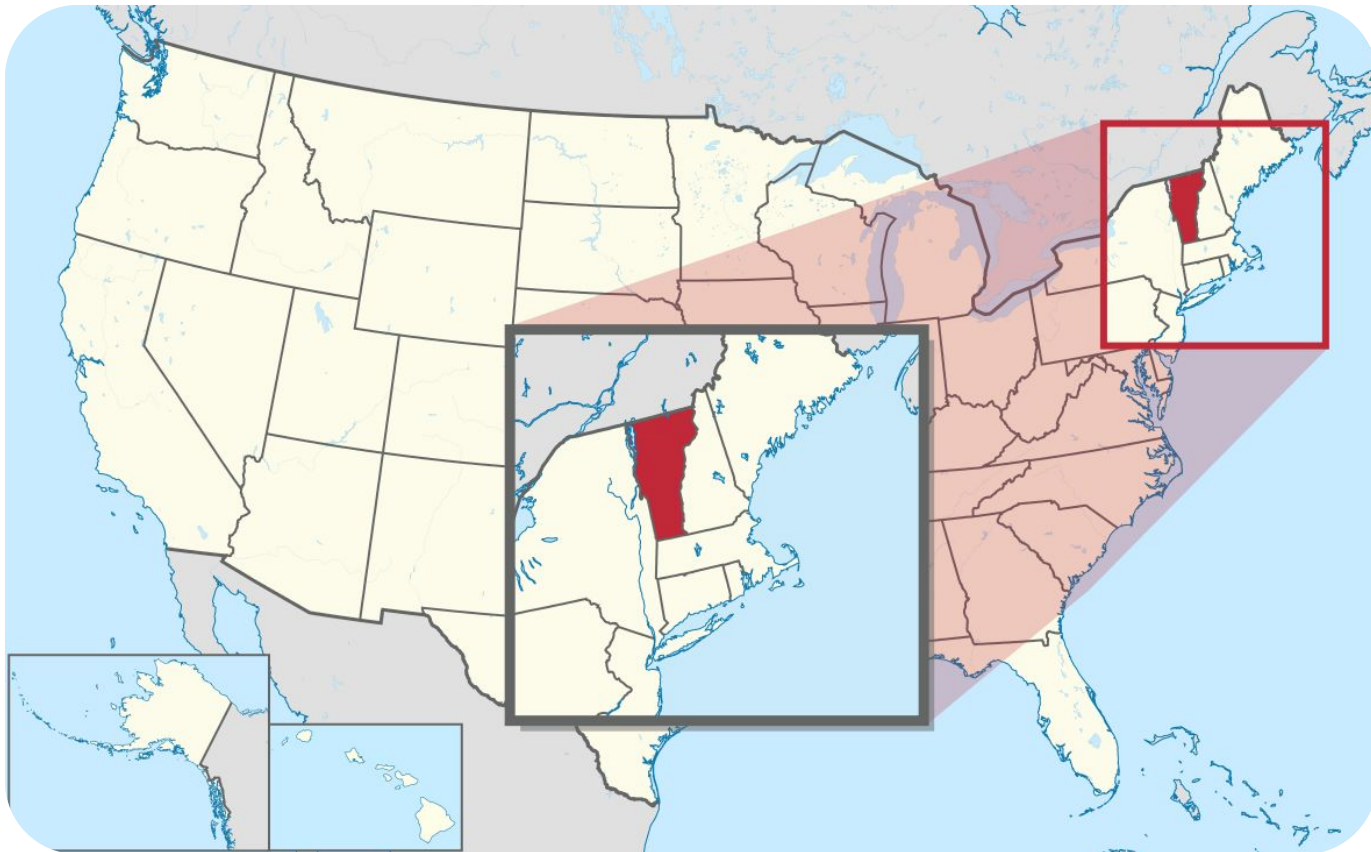


Vermont



Vermont is a state in the New England region of the northeastern United States.

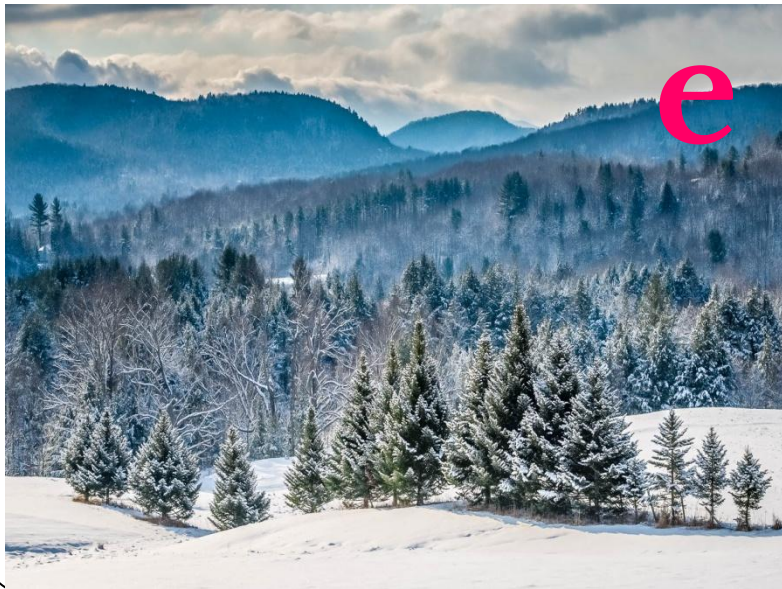


The capital
is Montpelier, the least
populous state capital in
U.S.





Climat



Flor

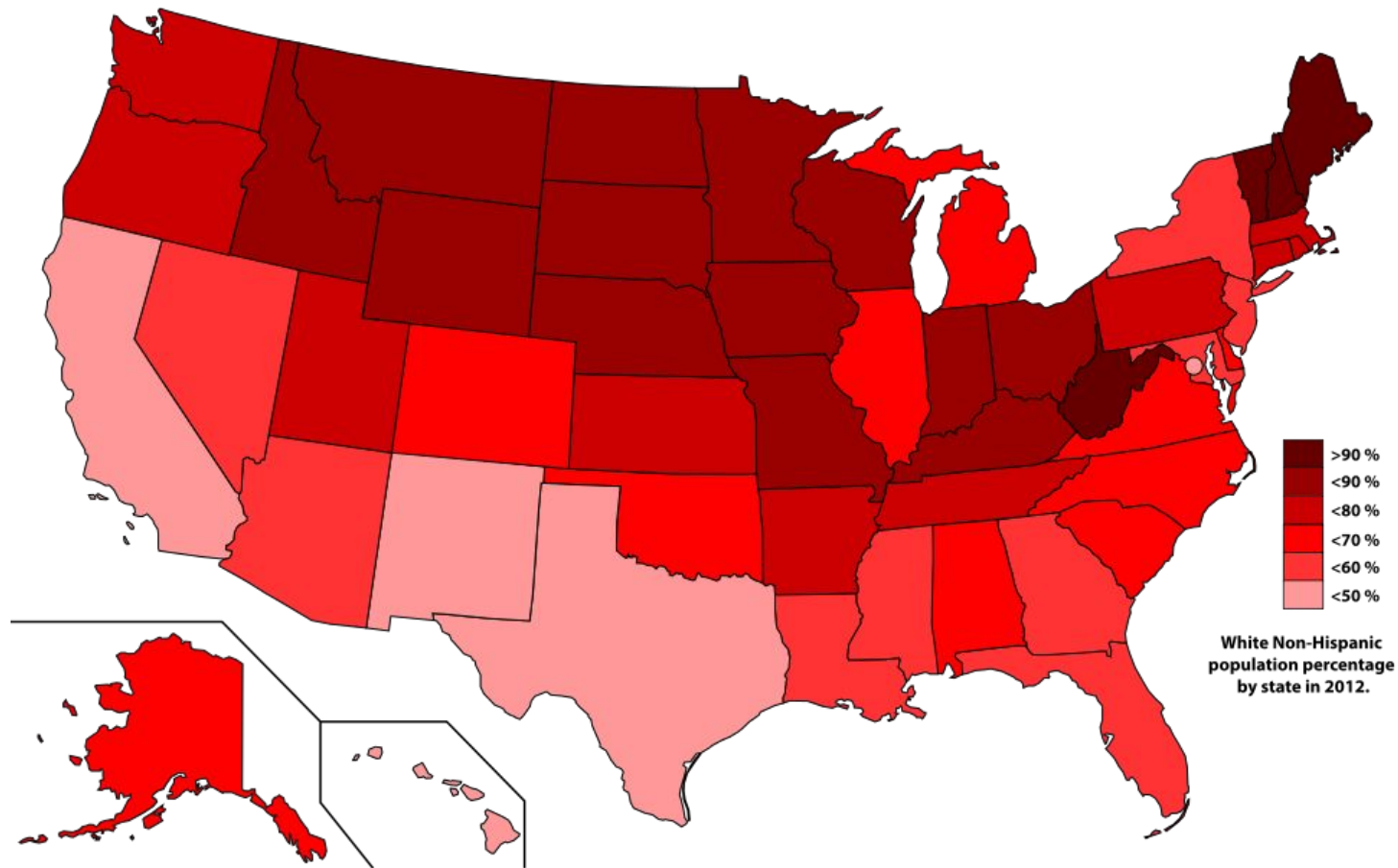
Vermont has a very rich flora. Much of the state, in particular the Green Mountains, is covered by the conifers and northern hardwoods of the New England-Acadian forests.

Climate change appears to be affecting the maple sugar industry. Sugar maples have been subject to stress by acid rain, asian longhorn beetles, pear thrips, and, in 2011, an excessive deer herd that is forced to eat bark in the winter. These maples need a certain amount of cold to produce sap for maple syrup. The time to tap these trees has shrunk to one week in some years. The tree may be replaced by the more aggressive Norway maples, in effect forcing the sugar maples to "migrate" north to Canada.



Population

94.3% of the population identified as white not of Hispanic or Latino origin in a 2013 US Census estimate. Vermont is the second whitest state in the Union, second only to Maine.

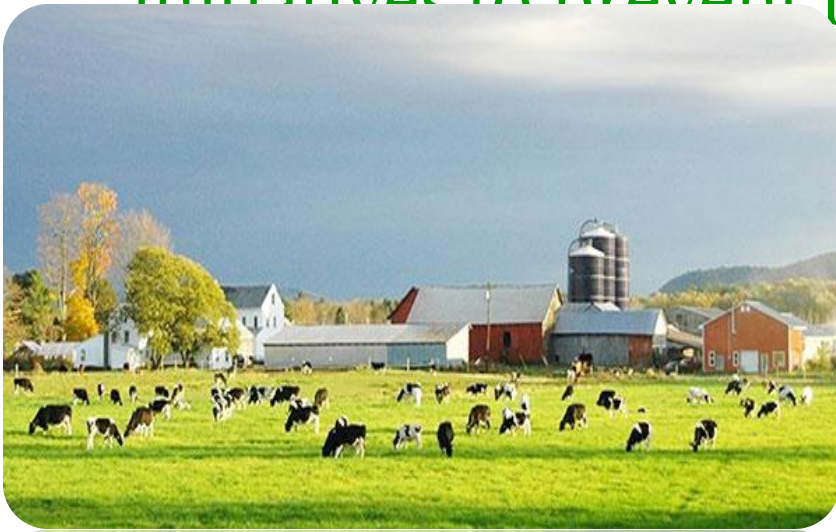


Econom



Dairy

farming is the primary source of agricultural income. In the last half of the 20th century, developers had plans to build condos and houses on what was relatively inexpensive, open land. Vermont's government responded with a series of laws controlling development and with some pioneering initiatives to prevent the loss of Vermont's dairy industry.



Forestr

Forest Products have always been a staple to the economy comprising 1% of the state total Gross state output and 9% of total manufacturing as of 2013. In 2007 Windham County contained the largest concentration of kilns for drying lumber east of the Mississippi River. The decline of farms has resulted in a regrowth of Vermont's forests due to ecological succession. Today, most of Vermont's forests are secondary





Othe

An important and growing part of Vermont's economy is the manufacture and sale of artisan foods, fancy foods, and novelty items trading in part upon the Vermont "brand," which the state manages and defends. Examples of these specialty exports include Cabot Cheese, the Vermont Teddy Bear Company, Fine Paints of Europe, Vermont Butter and Cheese Company, several micro breweries, ginseng growers, Burton Snowboards, Lake Champlain Chocolates, King Arthur Flour, and Ben and Jerry's Ice Cream.



Politic

Vermonters have been known for their political independence. Vermont is one of four states that were once independent nations (the others being Texas, California, and Hawaii). It has sometimes voted contrarian in national elections. Notably, Vermont is the only state to have voted for a presidential candidate from the Anti-Masonic Party, and Vermont was one of only two states to vote against Franklin D. Roosevelt in all four of his presidential campaigns (the other was Maine).



Much of the business of local government in Vermont towns takes place each March at a town meeting held at a meetinghouse, such as this one in Marlboro, Vermont.

