



ITAL TECHNOLOGY  
srl

ATLAS  
CORPORATION

RP 81  
GROUP



ATLAS  
POLSKA



# OUR IDENTITY

Your reliable partner in manufacturing, erecting and supervising of steel works in various industrial fields with a full logistical support tailored to suit the requirements of different customer projects.

# 4

main branches

# 30

countries where we have acquired working experience,  
a number that continues to increase every year

## VISION

We endeavour to be universally recognized as a leading and a constantly growing group of companies in the steel industry, both for our high quality and range of customer services.

## MISSION

To become the first name in the steel and mechanical carpentry industry as a sustainable partner and an indisputable choice for our customers, providing a high level of service and staying a step ahead of our competitors.

## VALUES

- Professional competence
- Quality
- Reliability
- Innovation
- Safety

### PROFESSIONAL COMPETENCE.

One of our group's advantages compared to our competitors is a team of highly qualified and certified specialists, who use modern technologies to optimize manufacturing and erecting processes, implementing their work experience and knowledge during supervising phases and exploiting their ability to organize correct and trouble-free logistic support.

### QUALITY. All

the works and services we provide comply with all applicable European and international standards.

### RELIABILITY.

Customer satisfaction and continuous increase in successfully completed projects are the main indicators of our reliability.

### INNOVATION.

Innovation is not only about introducing new technologies & upgrades, it is also about being creative and original in our work and research activities, finding ideas for improvement and sustainable development.

### SAFETY.

The protection of the environment, health and safety of our employees and third parties have absolute priority in all activities undertaken by ITAL TECHNOLOGY srl & ATLAS CORPORATION LLC & ATLAS POLSKA Sp. z o.o. & RP81 Group FZ LLE.

## BUSINESS PURPOSE

To become the standard benchmark for quality enterprises, implementing projects that fully embrace the requirements and individual expectations of the customer, avoiding the emergence of risks.





# ABOUT US

NEW VISION AND APPROACH BASED ON KNOWLEDGE AND EXPERIENCE



Ital Technology srl & Atlas Corporation LLC & RP81 Group FZ LLE is an Italian engineering and construction group of companies which supplies turnkey solutions for its customers in thermal and hydraulic industrial processes as well as industrial automation and air treatment systems. For about 14 years, the company's experts have been managing work sites for the construction of new structures and coordinating the processes related to the realization of mechanical works, providing also repair and technical maintenance of the sites.

Our 4 companies are committed to meeting the growing demands of our customers and occupying a strategic position in different parts of the world:

- ATLAS POLSKA Sp. z o.o. (Poland)
- ITAL TECHNOLOGY srl (Italy)
- ATLAS CORPORATION LLC (Ukraine)
- RP81 Group FZ LLE (UAE)

Based on 14 years of global experience, we offer a comprehensive range of tailored services to match your individual specific needs: from construction to logistic support, installation of a wide range of technological equipment and steel structures for various industrial applications, and to a supervision service covering all stages of the project. Our group operates in the steel and mechanical carpentry industry and boasts extensive experience in completing small and large-scale construction and maintenance projects.

Through the professionalism of our employees, the innovations in production processes and responsibility towards our customers we provide a first-rate service in strict compliance with European Quality Standards and the requirements of our clients.

Our goal is to ensure that the products and services we provide, boasting production and manufacturing excellence, have a global impact by tackling the insidious challenges of our times.

# OUR MAIN SERVICES

**Supervision:** we provide supervision serviced during the construction, assembly and start up phases all over the world. Qualified engineers are ready to follow every stage of the project monitoring quality and conformity to the project design.

**Logistic support:** exploiting the acquired experience and the means at our disposal, we provide turnkey solutions with state-of-the-art equipment and trained personnel to meet the project design demands of our customers.

**Assembly, commissioning, start up & after - sales service:** start-up monitoring, testing and inspection and process optimization services are available to customers across the world, so that new equipment can be quickly integrated into the production process. The assembly and commissioning phases are always conducted under the control of our team of specialists.

**Construction:** our production workshops are equipped with state-of-the-art equipment that allow us to build steel structures of any complexity.

- Supervision
- Assembly, commissioning, start up & after-sales service
- Logistic support
- Construction





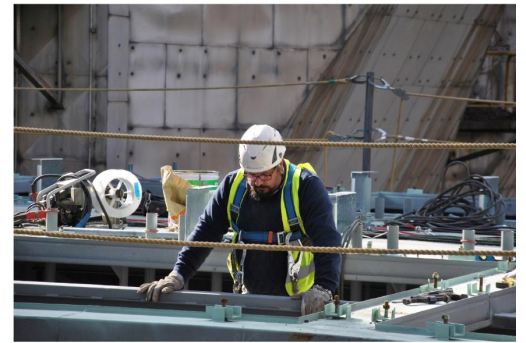
# ADVANTAGES

- Support to reach project goals by preventing the occurrence of risks;
- Control over construction projects to ensure they are implemented in an efficient and effective manner;
- Guarantees regarding quality, functioning and conformity of materials, equipment and systems to the applicable standards;
- Guarantees regarding the implementation of all safety regulations at the construction site.

# CONSTRUCTION SITE SUPERVISION CSS

Our independent construction site supervision helps you complete the project on time, avoiding the occurrence of the risks while meeting all relevant regulations and quality standards. To guarantee top - quality execution of work, our technical supervisors carry out quality control procedures at each stage of the project. We have extensive experience and deep knowledge in the field of technical control, providing the following services:

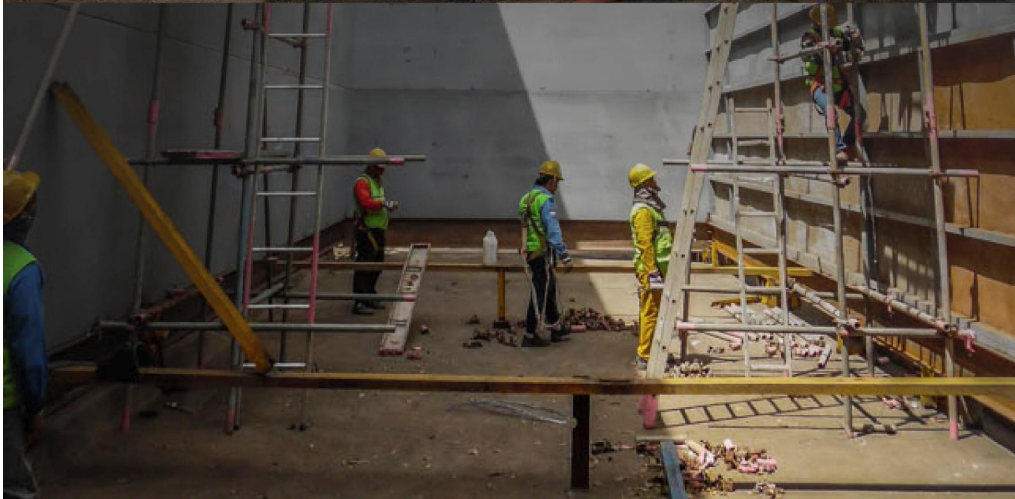
- Project support from the assembling of steel and mechanical carpentry structures to the commissioning of the machines;
- Traceability in daily reports of controls and inspections and project progress using project management tools;
- Inspections of welding seams, thicknesses and dimensions of steel structures;
- Design review;
- Inspection of machines, equipment, conveyor systems to detect mechanical defects or malfunctions, assigning workers to conduct relative repairs or adjustments;
- Daily inspection of the quality of the work and the manpower at the worksite;
- Report on the progress of delivered engineering related equipment;
- Supervision of workers to ensure compliance with all safety regulations;
- Verification of project documentation conformity.





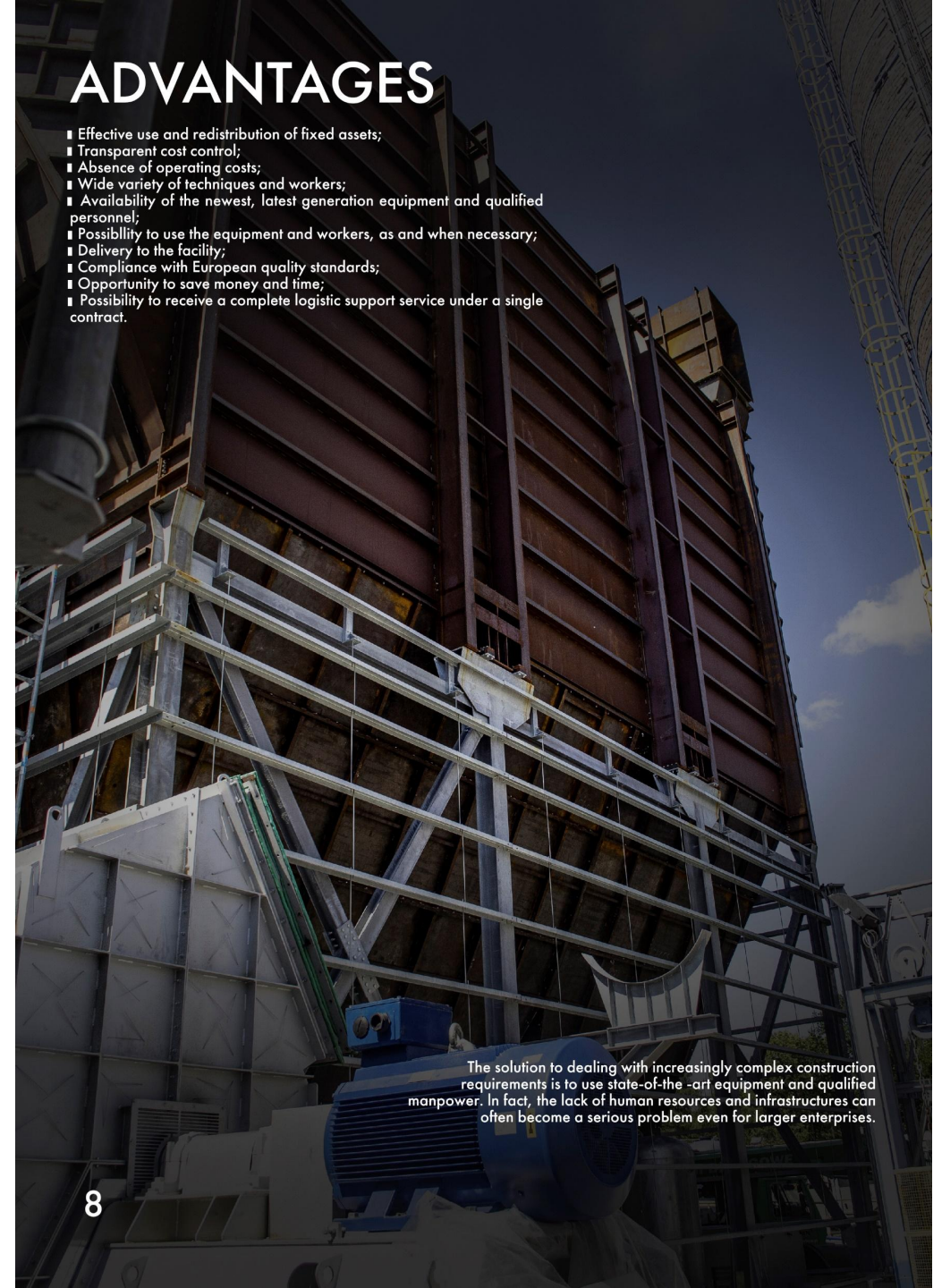
# LOGISTIC SUPPORT

Using our acquired experience and the means at our disposal, we have developed new solutions for the upgrading of plant systems managed by a highly trained team to ensure the correct realization of the customer's project. The Logistic Support Service involves the integration of personnel, transportation, inventory, equipment to ensure the supply and demand cycle runs smoothly and your business activities continue efficiently.



# ADVANTAGES

- Effective use and redistribution of fixed assets;
- Transparent cost control;
- Absence of operating costs;
- Wide variety of techniques and workers;
- Availability of the newest, latest generation equipment and qualified personnel;
- Possibility to use the equipment and workers, as and when necessary;
- Delivery to the facility;
- Compliance with European quality standards;
- Opportunity to save money and time;
- Possibility to receive a complete logistic support service under a single contract.



The solution to dealing with increasingly complex construction requirements is to use state-of-the-art equipment and qualified manpower. In fact, the lack of human resources and infrastructures can often become a serious problem even for larger enterprises.



# LOGISTIC SUPPORT

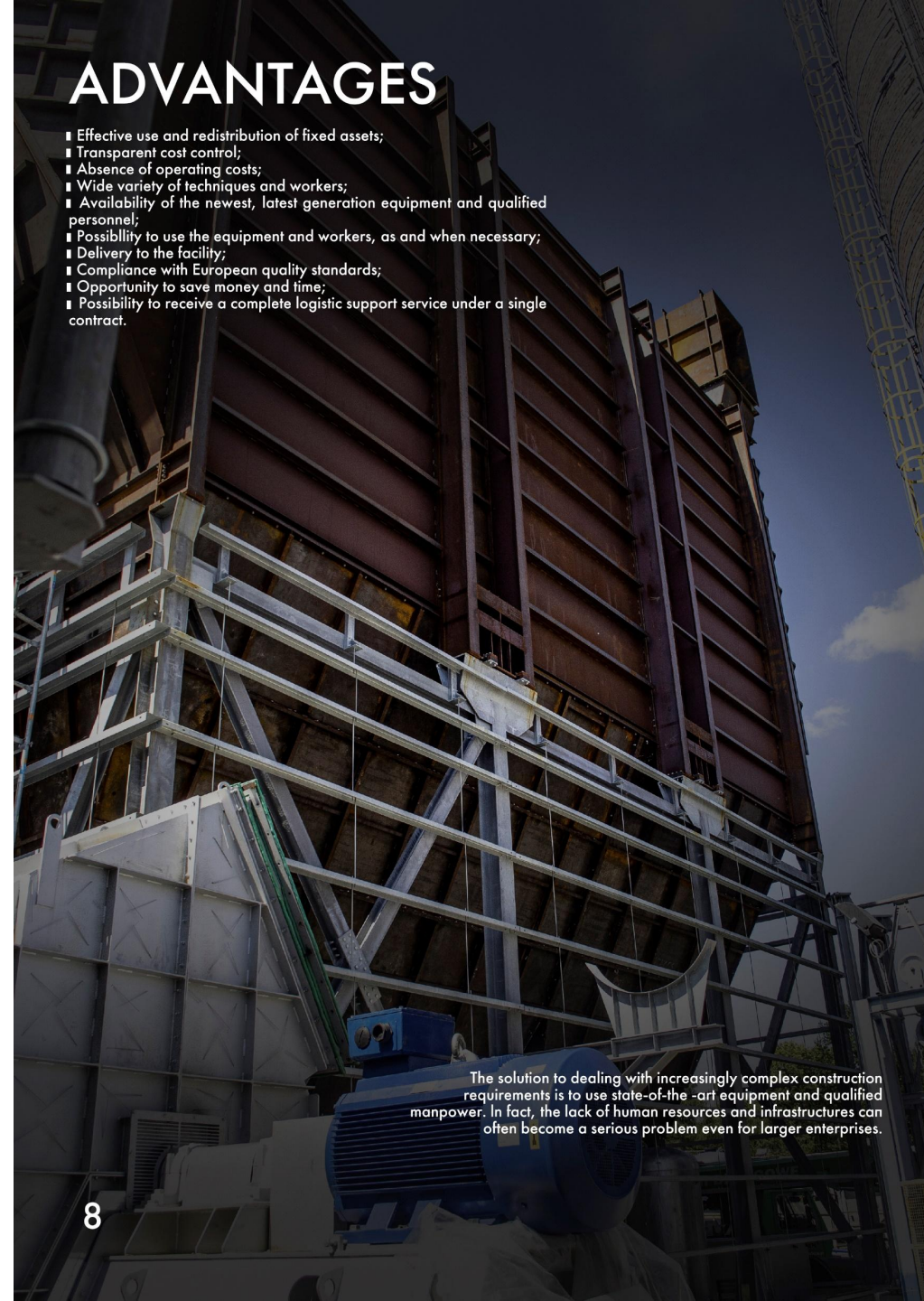
Using our acquired experience and the means at our disposal, we have developed new solutions for the upgrading of plant systems managed by a highly trained team to ensure the correct realization of the customer's project.  
The Logistic Support Service involves the integration of personnel, transportation, inventory, equipment to ensure the supply and demand cycle runs smoothly and your business activities continue efficiently.



7

# ADVANTAGES

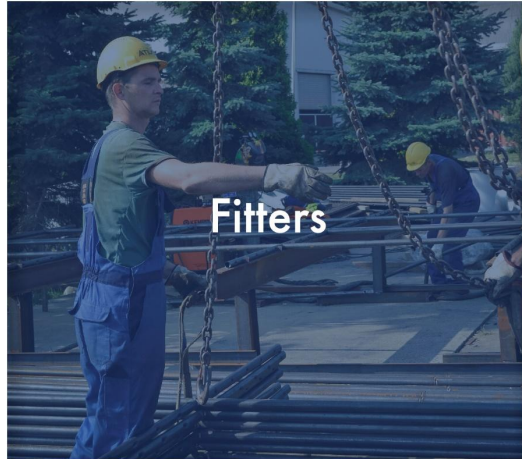
- Effective use and redistribution of fixed assets;
- Transparent cost control;
- Absence of operating costs;
- Wide variety of techniques and workers;
- Availability of the newest, latest generation equipment and qualified personnel;
- Possibility to use the equipment and workers, as and when necessary;
- Delivery to the facility;
- Compliance with European quality standards;
- Opportunity to save money and time;
- Possibility to receive a complete logistic support service under a single contract.



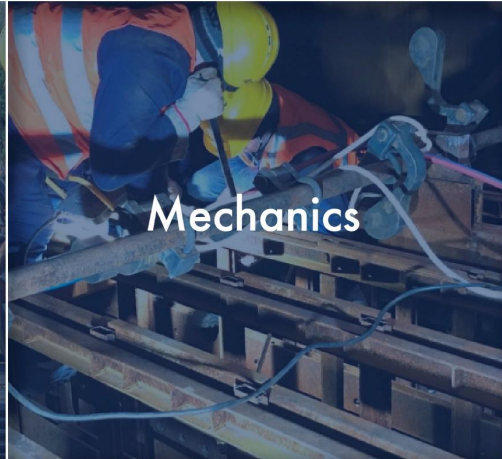
The solution to dealing with increasingly complex construction requirements is to use state-of-the-art equipment and qualified manpower. In fact, the lack of human resources and infrastructures can often become a serious problem even for larger enterprises.

8





Fitters



Mechanics



# ASSEMBLY

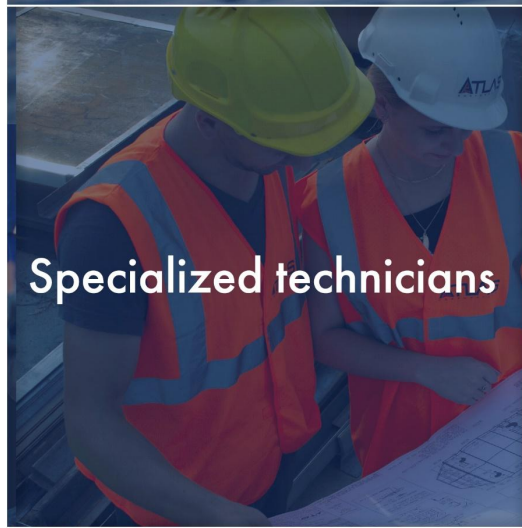
commissioning & start up, after-sales service



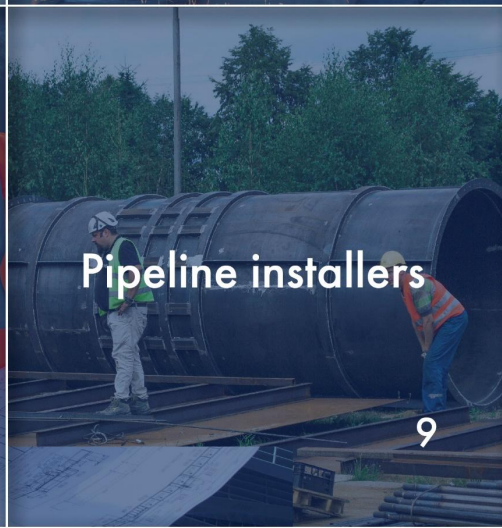
Welders



Assemblers



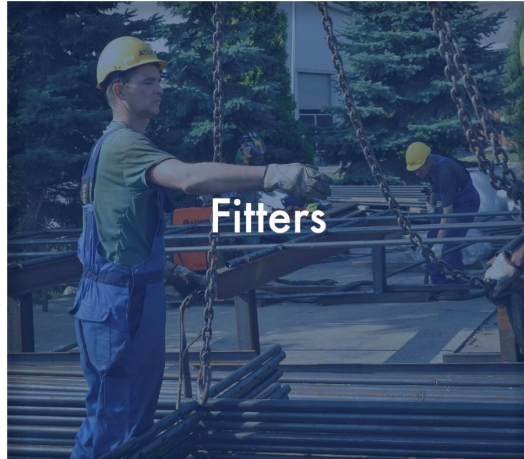
Specialized technicians



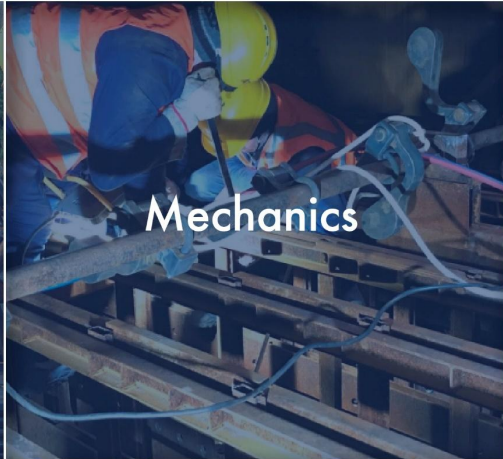
Pipeline installers







Fitters



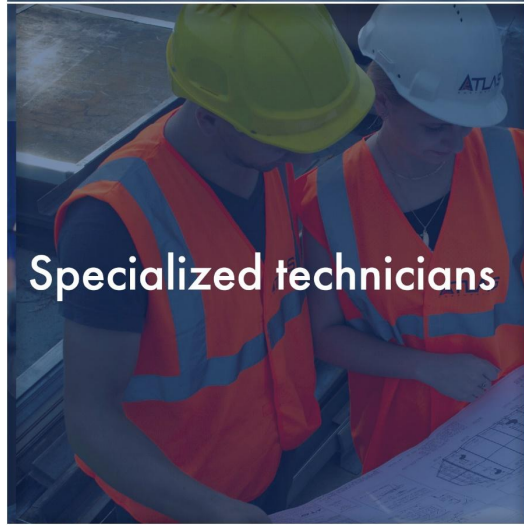
Mechanics



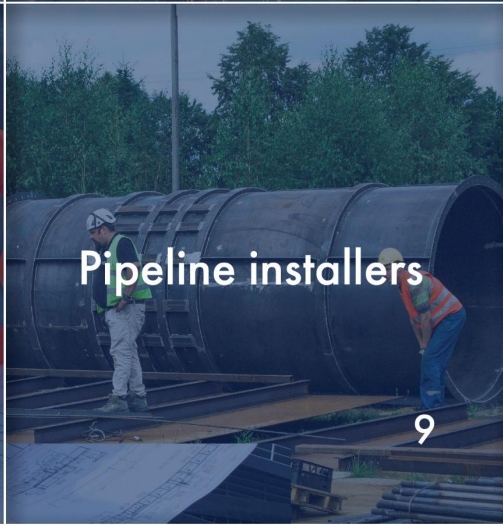
Welders



Assemblers



Specialized technicians



Pipeline installers

9



# ASSEMBLY

commissioning & start up, after-sales service



10



# ASSEMBLY, COMMISSIONING & START UP, AFTER-SALES SERVICE

We guarantee the best assembly, installation and maintenance services. Our company performs all types of assembly and installation exploiting effective tools and equipment.

Assembly and commissioning is the final and most critical stage for new equipment installation. Our experts are ready to ensure the best possible commissioning service, and guarantee their presence until your plant system is completely up and running.

## OUR RANGE OF SERVICES INCLUDES

- Installation of equipment and industrial steel structures;
- Installation and commissioning of production line equipment, including the construction of necessary steel structures;
- Repairs of individual machine parts and components using various methods: gluing, applying metal-polymer composites on a worn surface with subsequent machining, welding with welding electrodes, replacing of parts of worn pieces;
- Overhaul of the customer's equipment with possible replacement of worn out, damaged and obsolete bearings, guiding elements, rubber seals, sensors, electrical cables, electric power and electronic equipment;
- Installation of pipelines.
- Revamping of the customer's equipment with the development and construction of individual units and replacement of control systems;

# ASSEMBLY





# COMMISSIONING & START UP

Commissioning involves testing all the equipment to ensure that it functions correctly. Our commissioning service includes checking the condition of the equipment, the correct connection of power supply and hydraulic systems, setting, starting and checking the operating parameters, verification of the plant system's operations, consistency of the set pressure, temperature and flow rates, and also consistency with the phase state of the analysed environment. This work guarantees the correct long - term operation of the system and eliminates the difficulties in servicing the equipment.

The company's multiple skills and expertise means it can perform work of varying complexity, having extensive experience in the industrial mechanical carpentry sector. We always follow our customers' instructions to best meet their requirements.

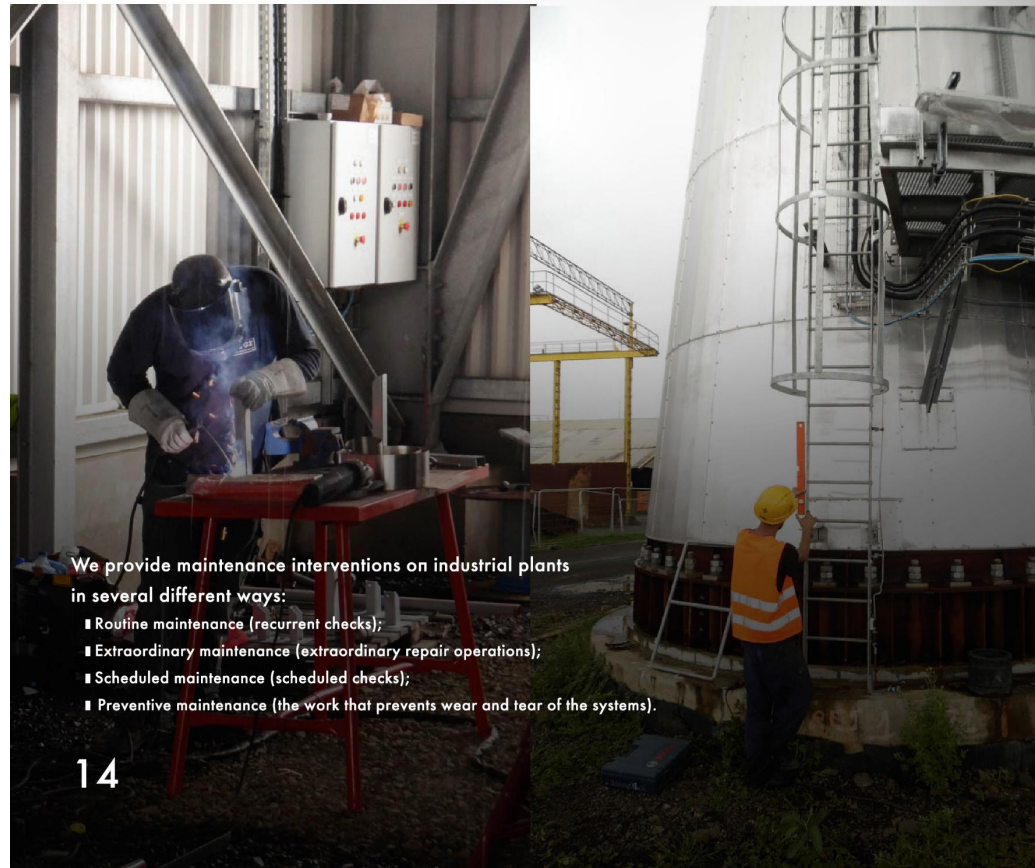
## ASSEMBLY

- Complete or partial assembling and dismantling of steel structures and mechanical equipment, with subsequent re-assembly and testing;
- Assembling of pipes and relative joints
- Assembling of fluid management systems and ventilation systems.

### TYPES OF STEEL STRUCTURE ASSEMBLY USED

- Assembling of small elements: a laborious and complex process with a number of variables in terms of the construction parameters which, in the end, form a single unit
- Assembling element by element: used for the construction of residential and industrial buildings. Installation is carried out using readymade structural elements
- Installation of finished structures: this presumes assembly of the structures from the ground upwards, followed by the fastening of all the nodes at height. This type of installation is used in the installation of power lines, pipes and other structures.

## AFTER-SALES SERVICE



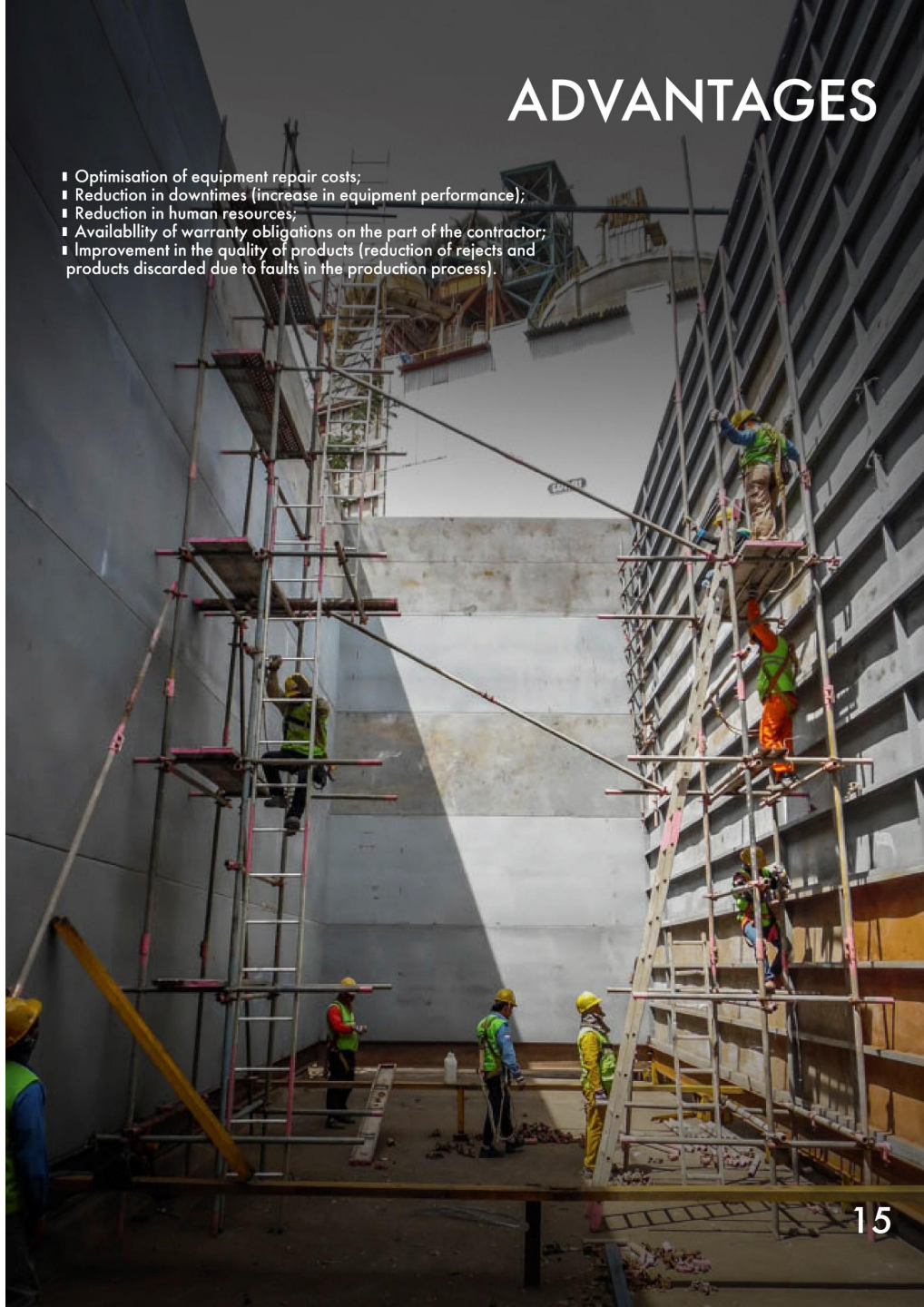
We provide maintenance interventions on industrial plants in several different ways:

- Routine maintenance (recurrent checks);
- Extraordinary maintenance (extraordinary repair operations);
- Scheduled maintenance (scheduled checks);
- Preventive maintenance (the work that prevents wear and tear of the systems).



# ADVANTAGES

- Optimisation of equipment repair costs;
- Reduction in downtimes (increase in equipment performance);
- Reduction in human resources;
- Availability of warranty obligations on the part of the contractor;
- Improvement in the quality of products (reduction of rejects and products discarded due to faults in the production process).



15

# CONSTRUCTION

With our service and products, we satisfy the demands of different industrial segments such as: metallurgy, cement, glass production and chemical industry, etc.  
We boast vast experience in the production of bridge structures, lifting equipment and related structures, furnaces, industrial air treatment systems including dedusting systems, pressure vessels and boilers, chimneys and ducts.  
The production workshops of our partners are all certified in accordance with the requirements of European standards EN 1090-1, EN 1090-2, ISO 3834-2, OHSAS 18001 : 201 O and ISO 9001: 2009.

**Each workshop carries out the following processes: :**

- Control of incoming raw materials and consumables;
- Operational control and product testing;
- Quality control testing and acceptance on finished products;
- Final testing and inspection certificate.

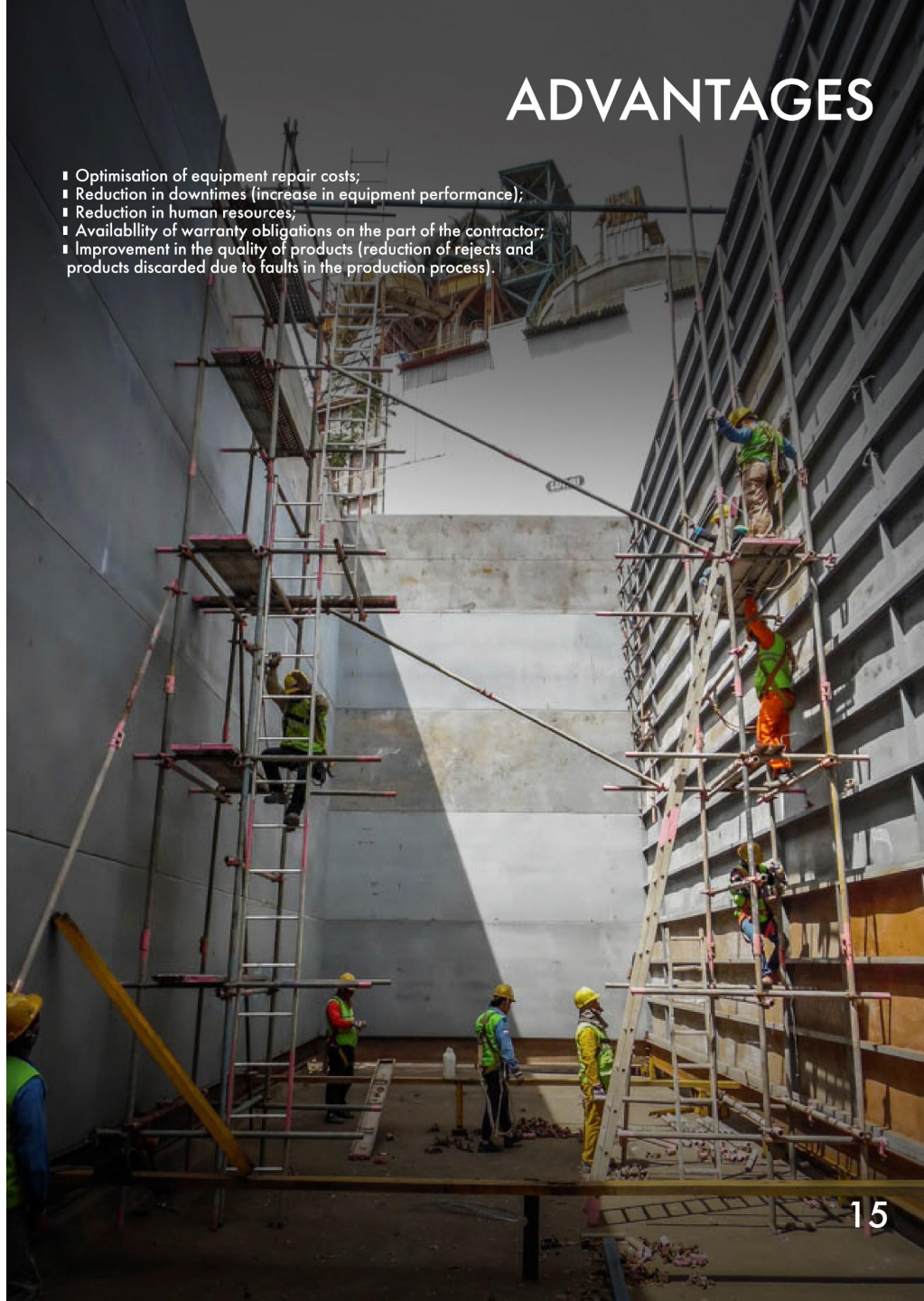


16



# ADVANTAGES

- Optimisation of equipment repair costs;
- Reduction in downtimes (increase in equipment performance);
- Reduction in human resources;
- Availability of warranty obligations on the part of the contractor;
- Improvement in the quality of products (reduction of rejects and products discarded due to faults in the production process).



15

# CONSTRUCTION

With our service and products, we satisfy the demands of different industrial segments such as: metallurgy, cement, glass production and chemical industry, etc.

We boast vast experience in the production of bridge structures, lifting equipment and related structures, furnaces, industrial air treatment systems including dedusting systems, pressure vessels and boilers, chimneys and ducts.

The production workshops of our partners are all certified in accordance with the requirements of European standards EN 1090-1, EN 1090-2, ISO 3834-2, OHSAS 18001 : 201 O and ISO 9001 : 2009.

Each workshop carries out the following processes: :

- Control of incoming raw materials and consumables;
- Operational control and product testing;
- Quality control testing and acceptance on finished products;
- Final testing and inspection certificate.



16





# HOW WE MANAGE OUR WORK

**CUSTOMER** Various assignments relating to the construction, assembly and maintenance of equipment and steel structures.

**PROJECT MANAGEMENT & SUPERVISION** Control and monitoring of project performance throughout all phases from order to delivery with ongoing reports to customers.

**LOGISTIC SUPPORT** Cost - effective solutions for the redistribution of equipment and manpower to guarantee the required project performance.

**CONSTRUCTION WORKSHOP** Our partners' production facilities are equipped with state - of - the - art machinery that enables production for even the most complex structures.

**ASSEMBLY AND COM** art up allow us to provide turnkey solutions for our customers.





## CORPORATE & SOCIAL RESPONSIBILITIES



### OUR CSR (CORPORATE & SOCIAL RESPONSIBILITIES) COMMITMENTS CONCERNING THE WAY WE DO BUSINESS

- To continue to develop actions to improve safety on the production sites and in workshops;
- To be fully compliant with international agreements and national regulations;
- To build responsible relationships with our customers.

## SOME OF OUR PRESENT AND PAST CUSTOMERS





