



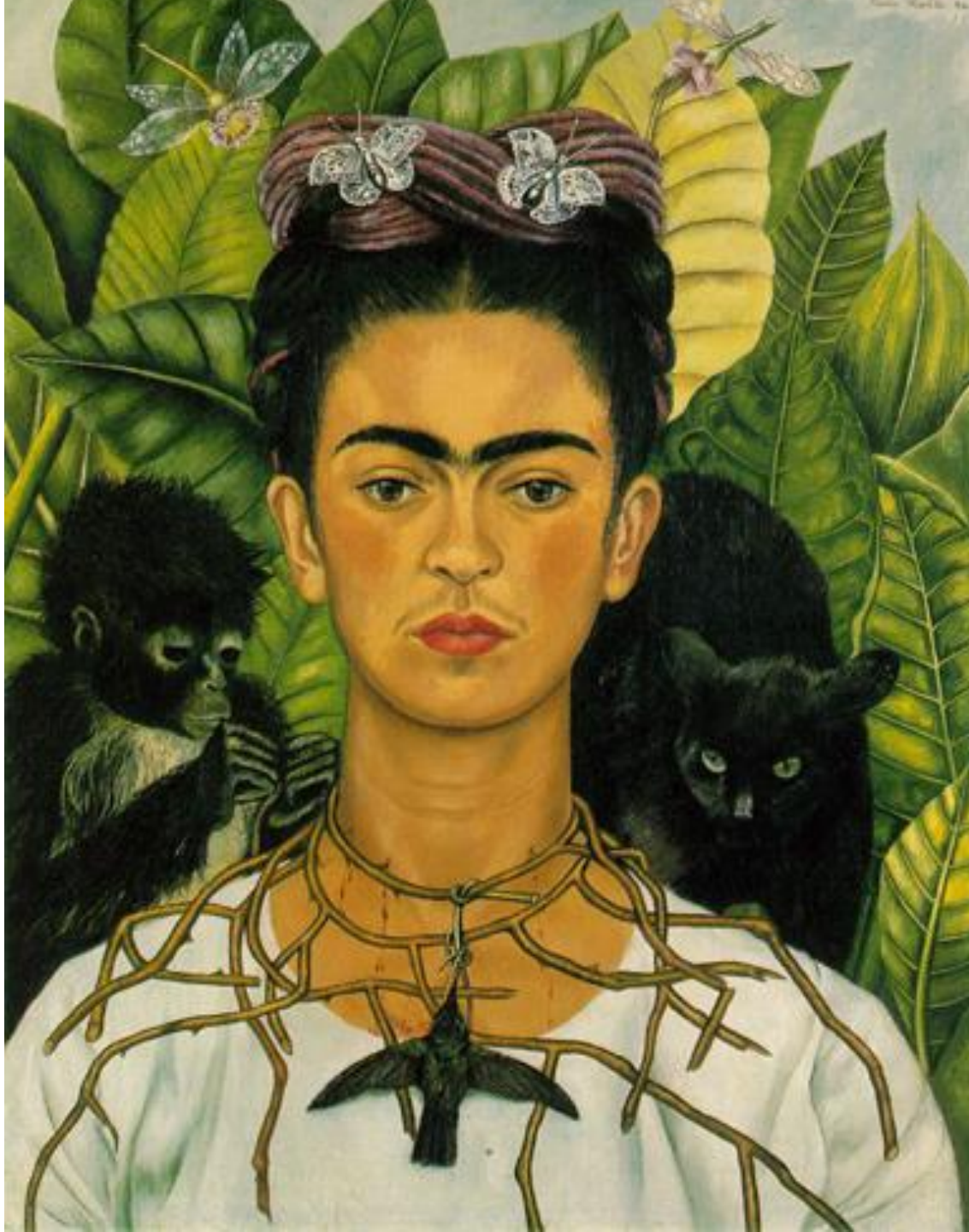




FAHED  
SHEHAT

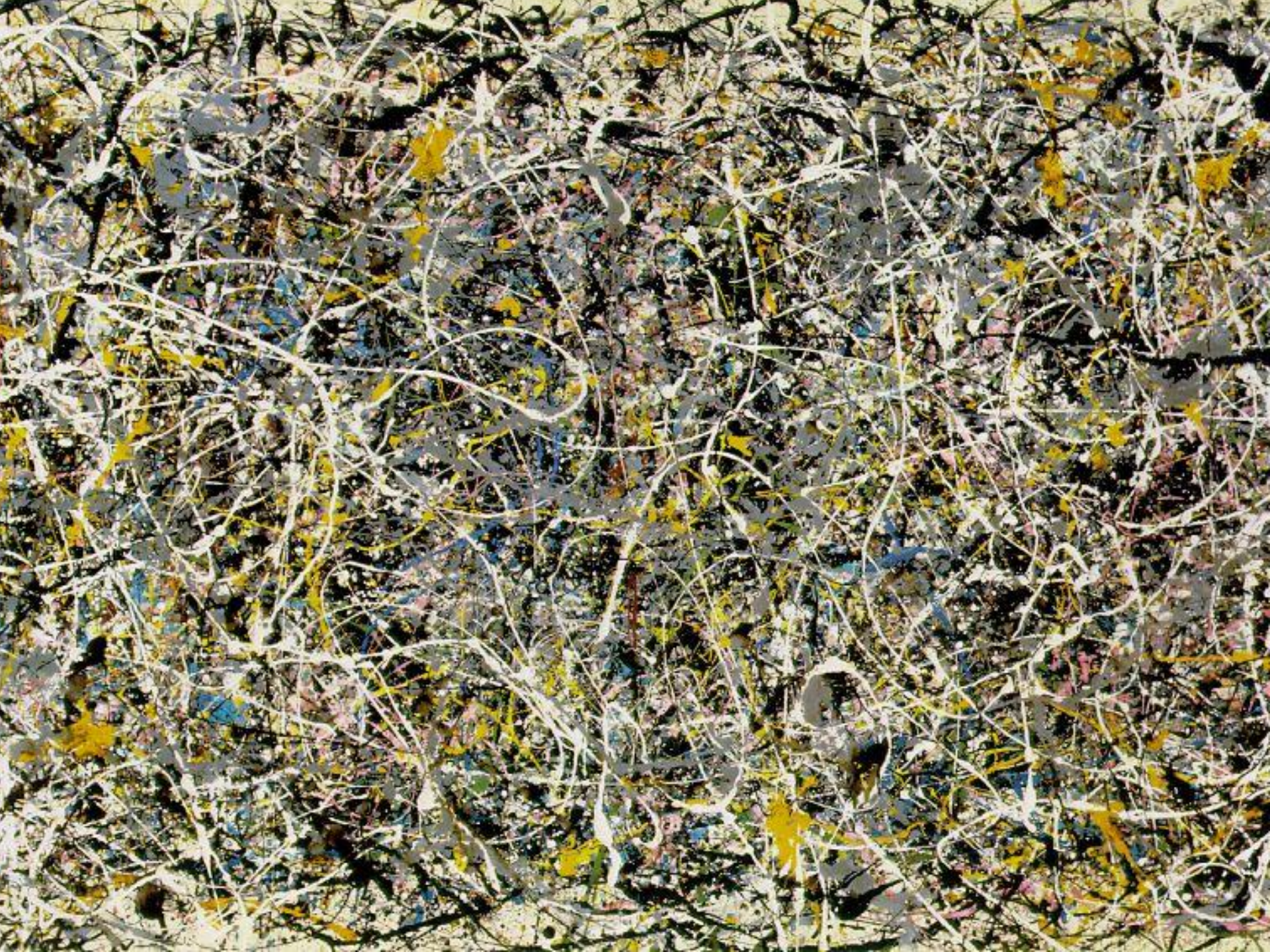
VINCENT











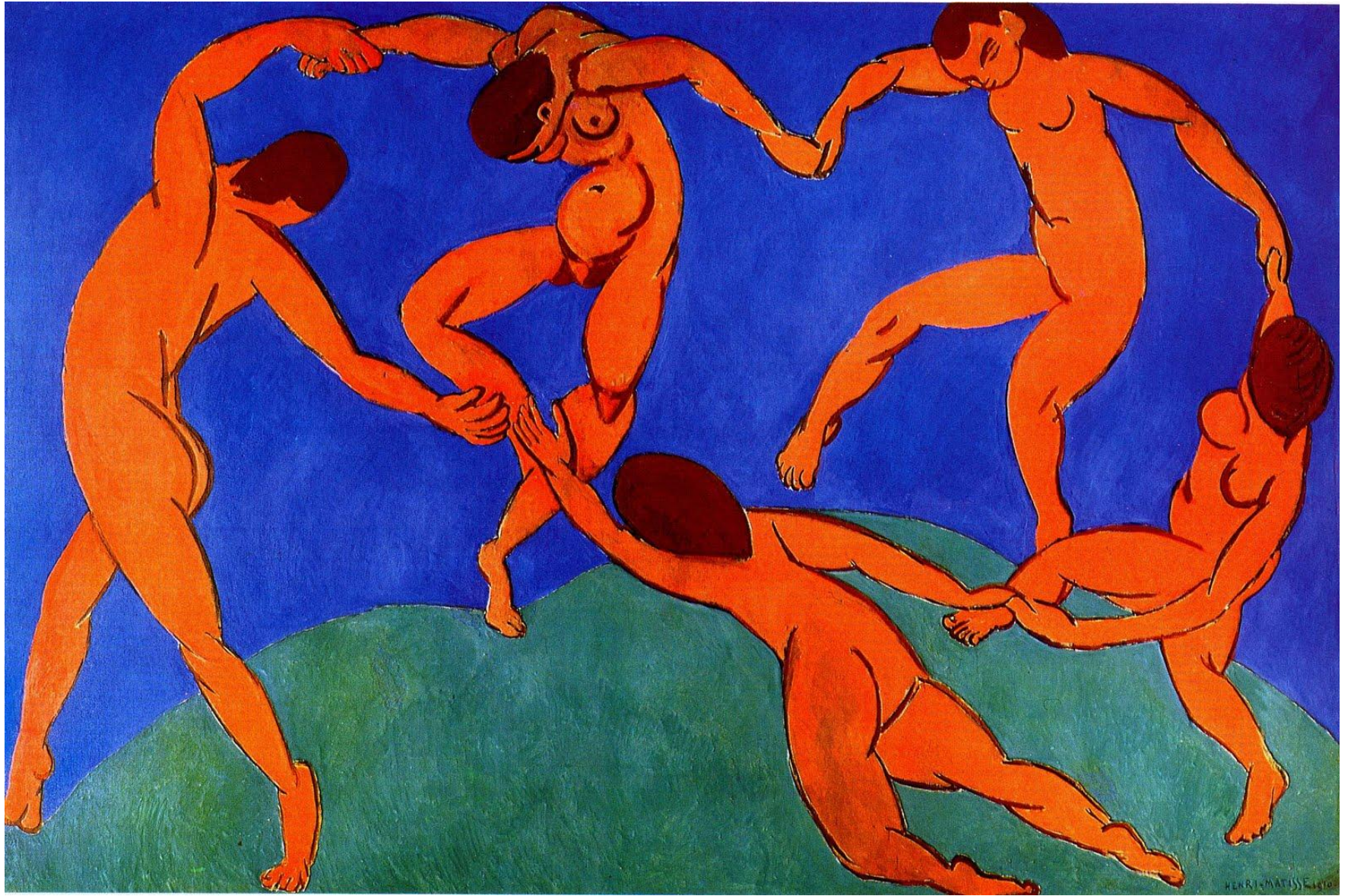
































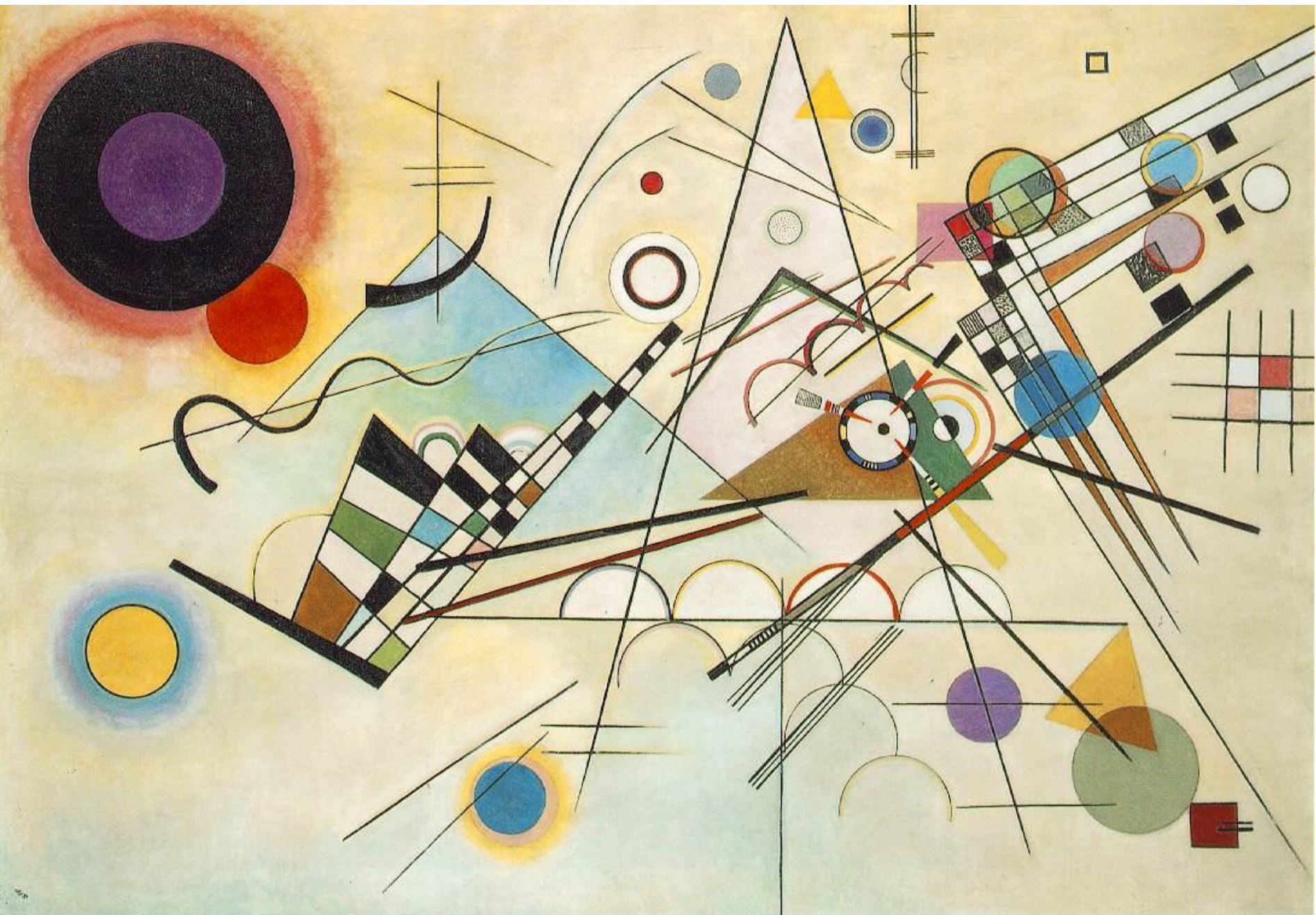




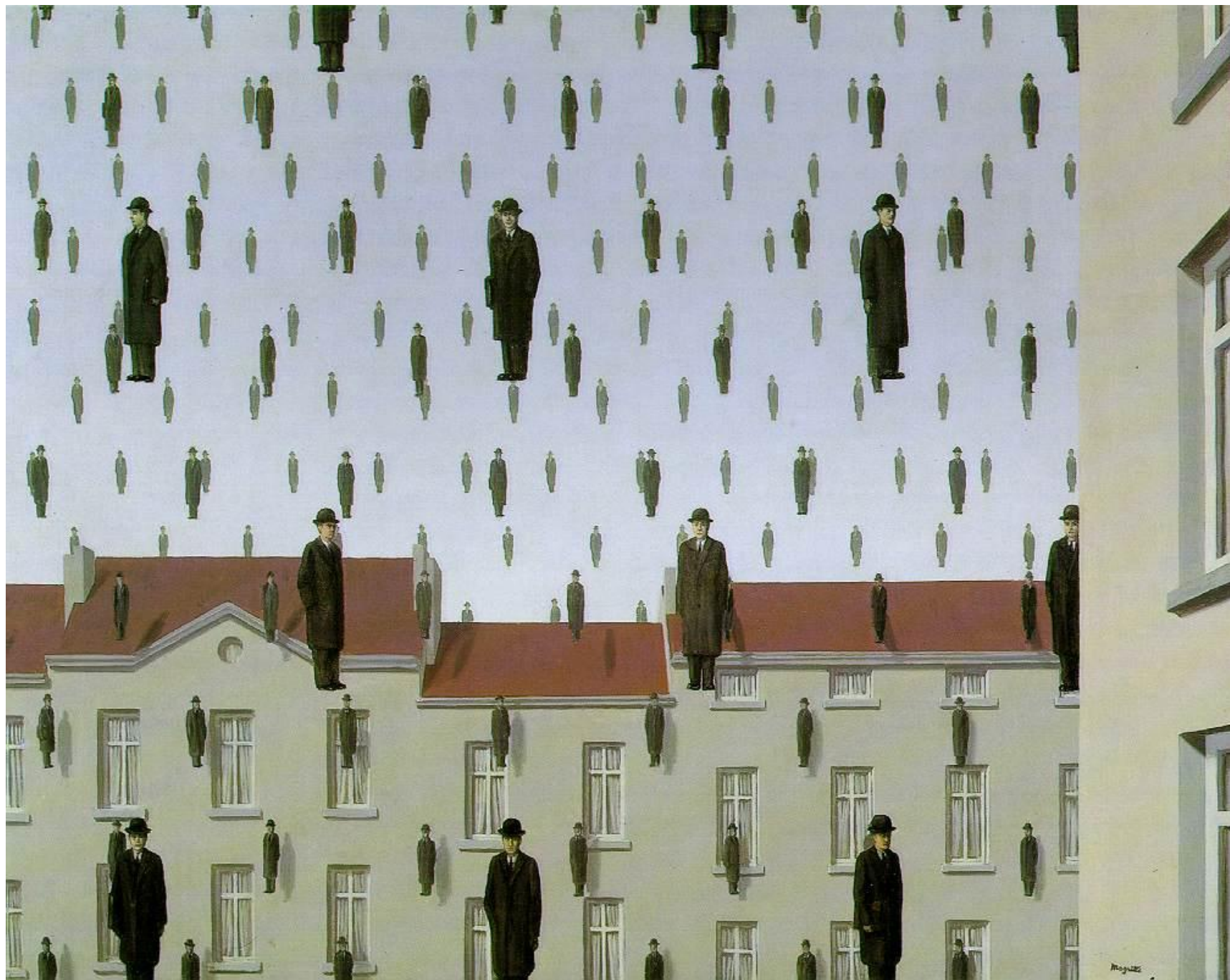




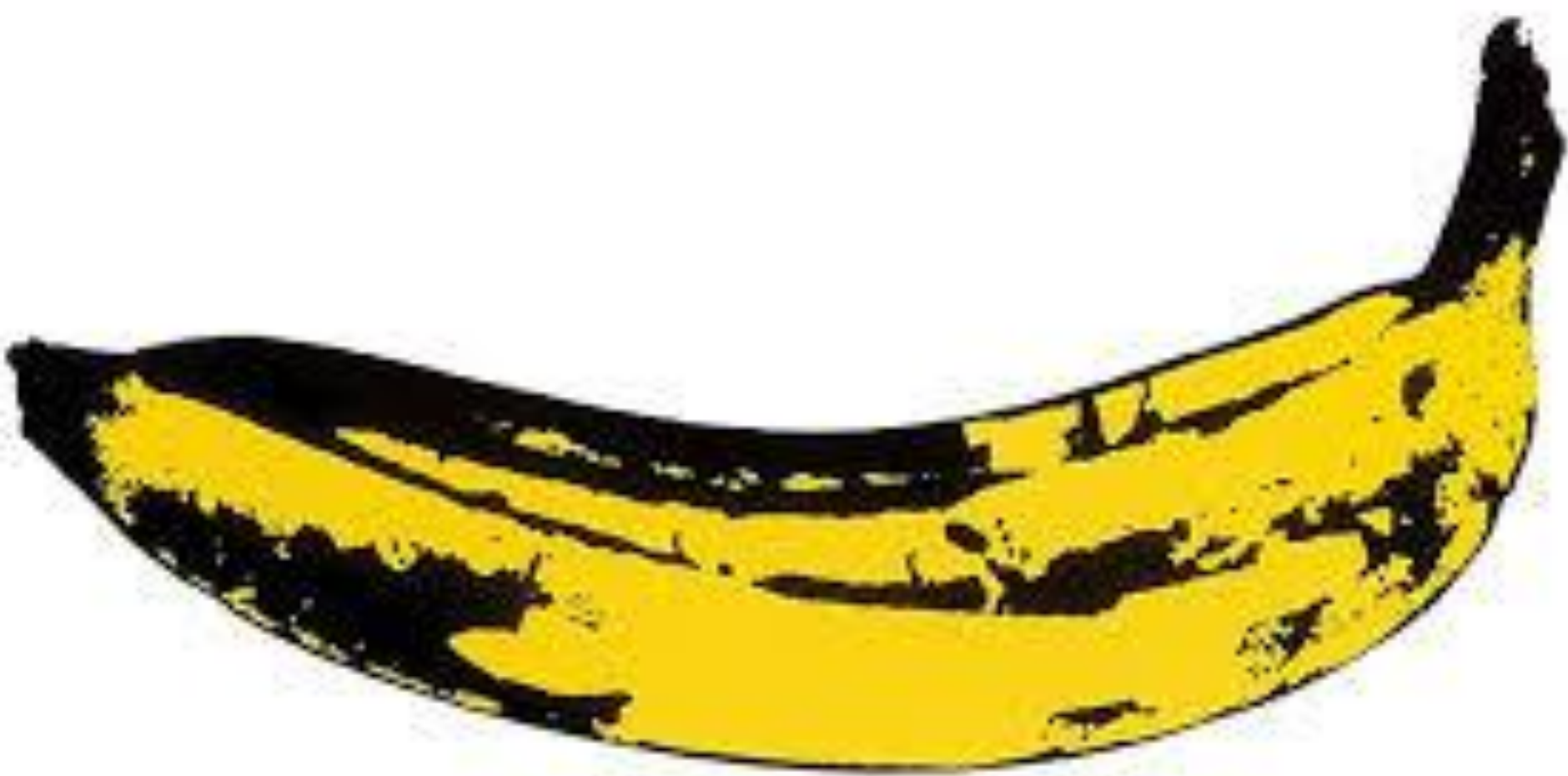
































Wassily Kandinsky - "Yellow-Red-Blue," 1911, oil on canvas, 128 by 201.5 cm.  
Musée national d'art moderne, Centre Pompidou, Paris, gift of Mrs. Kandinsky









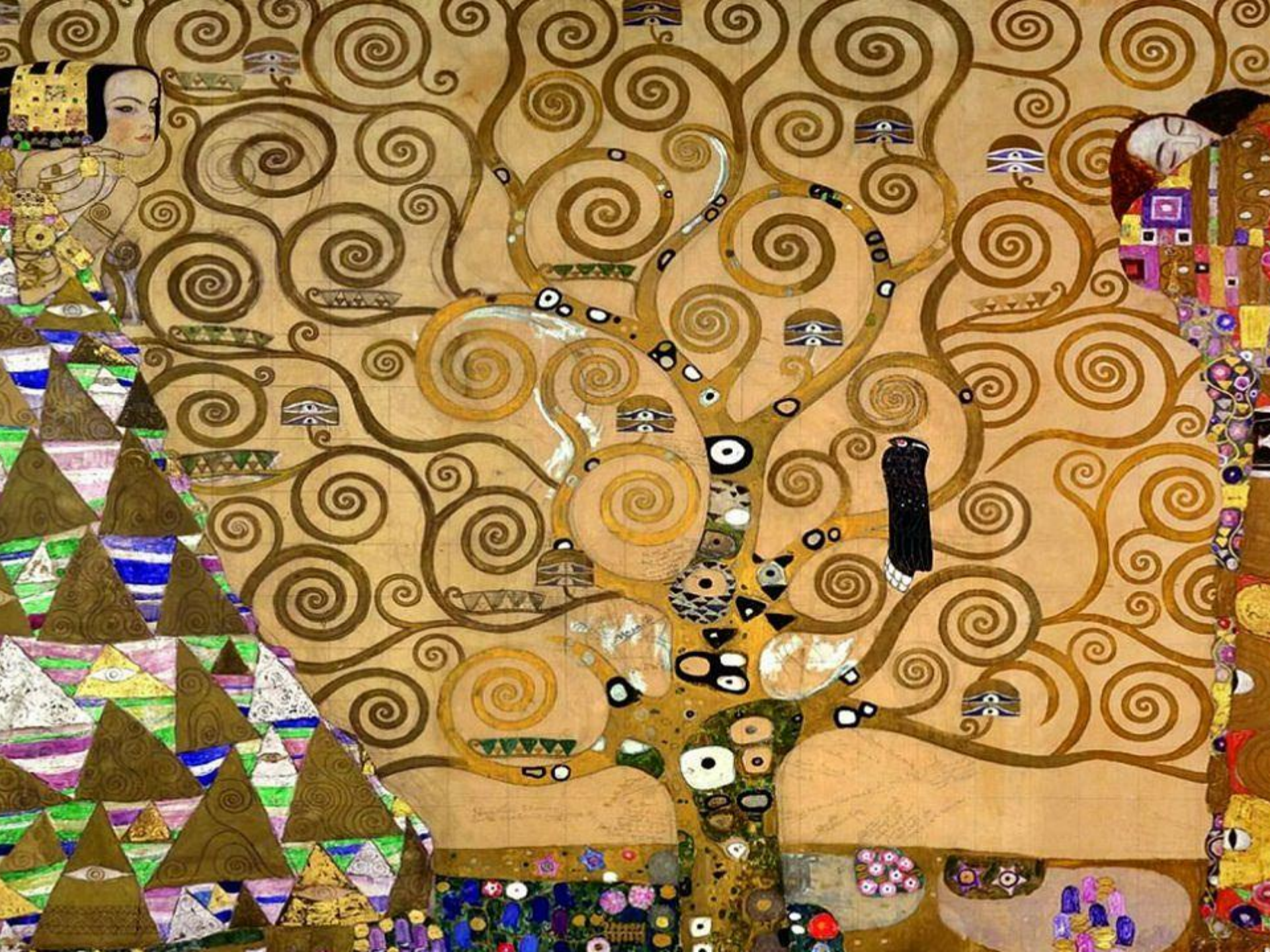




















*Ceci n'est pas une pipe.*







