

Australia



Capital: Canberra



Parliament House Canberra

Cities of Australia: Sydney



Sydney Opera House

Cities of Australia: Melbourne



Giant Sky Wheel

Location

It is the world's sixth-largest country by total area.

Neighbouring countries include Indonesia, East Timor and Papua New Guinea to the north; the Solomon Islands, Vanuatu and New Caledonia to the north-east; and New Zealand to the south-east.



Location

Australia officially the Commonwealth of Australia, is a country comprising the mainland of the Australian continent, the island of Tasmania, and numerous smaller islands.



History

For at least 40,000 years before the first British settlement in the late 18th century, Australia was inhabited by indigenous Australians, who spoke languages grouped into roughly 250 language groups.



After the discovery of the continent by Dutch explorers in 1606, Australia's eastern half was claimed by Great Britain in 1770 and settled through penal transportation to the colony of New South Wales from 26 January 1788.

The population grew steadily in subsequent decades; the continent was explored and an additional five self-governing Crown Colonies were established.

On 1 January 1901, the six colonies federated, forming the Commonwealth of Australia.

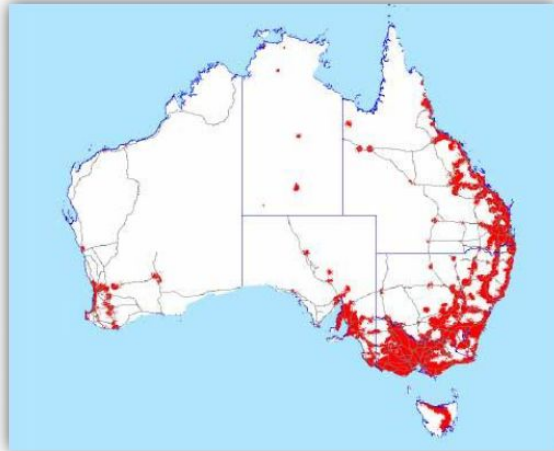


Form of government

Since Federation, Australia has maintained a stable liberal democratic political system that functions as a federal parliamentary democracy and constitutional monarchy. The federation comprises six states and several territories.

Population

The population of 23.1 million is highly urbanised and heavily concentrated in the eastern states.



Languages

✓ Official languages: none

✓ National language: English (de facto)

Cities of Australia: Brisbane



Brisbane Riverfire

What Do You Know about Australia?



- What is the capital of Australia?
a. Sydney b. Melbourne c. Canberra
- Which city is the oldest and largest?
a. Canberra b. Sydney c. Darwin



- Which is a popular Australian animal?
a. bear b. kangaroo c. fox



- Who are the Australian natives
a. Eskimos b. Aborigines c. Indians
- Who discovered Australia?
a. Columbus b. Captain Cook c. Lewis and Clark



- What is the official Language in Australia?
a. English b. German c. Spain



Write these in your copy-books!

How do you say it in Russian?

British	Australian
barbecue	barbie
kangaroo	roo
mosquito	mozzie
chicken	chook
candy	lollie
slippers	thongs
TV	tellie
girl	sheila
form	year
sheep	jumbuck
cinema	pictures
postbox	letterbox
trainers	runners
freeway	main road