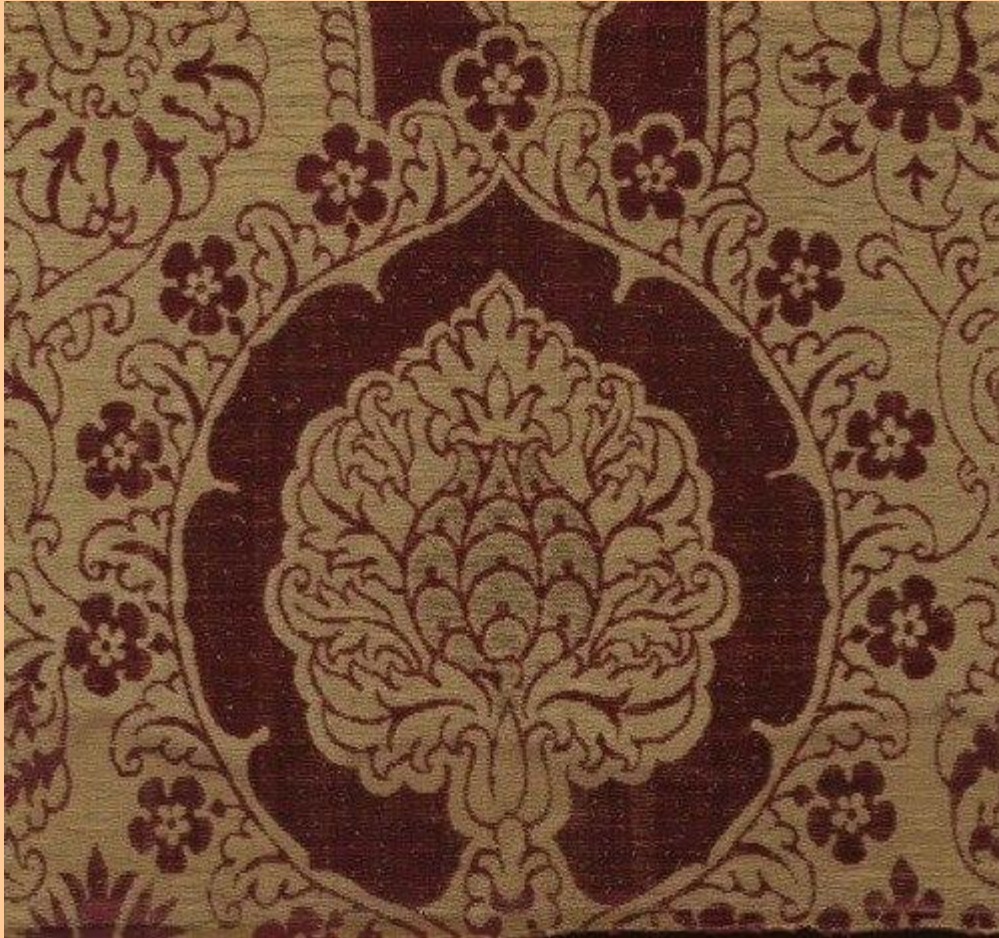
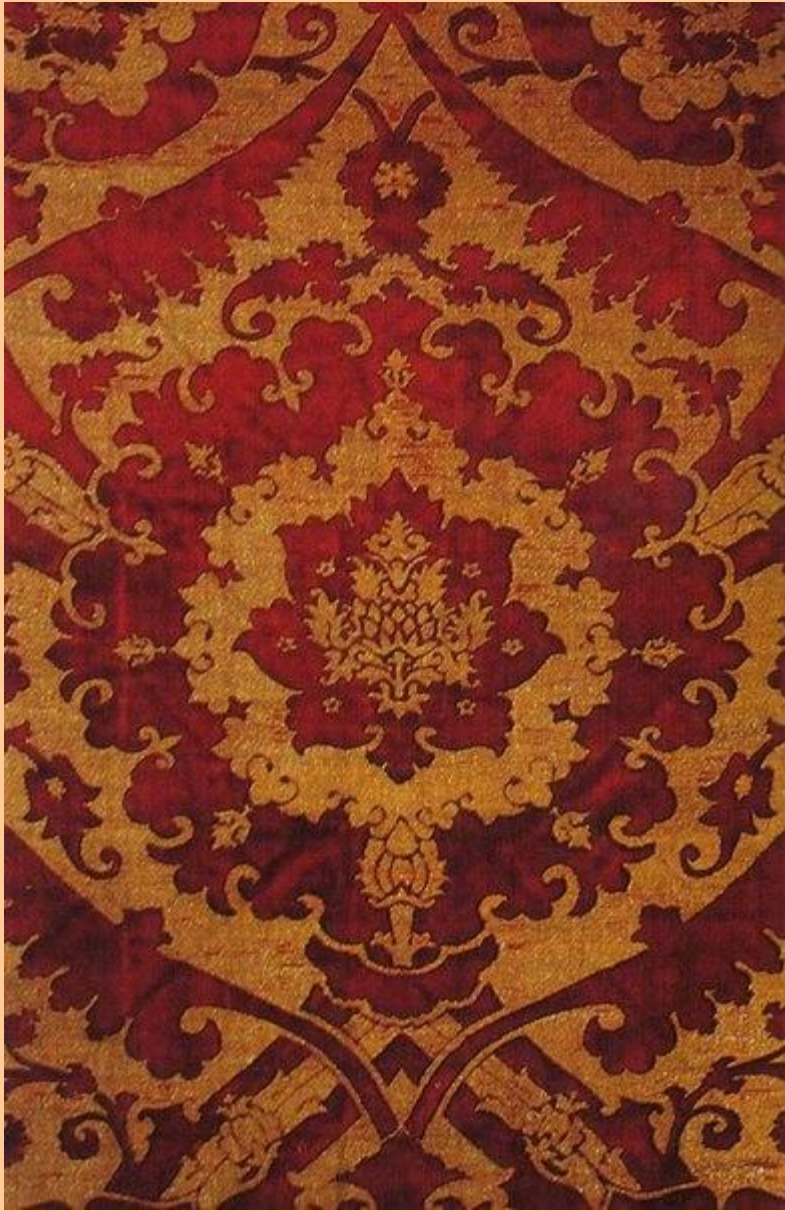


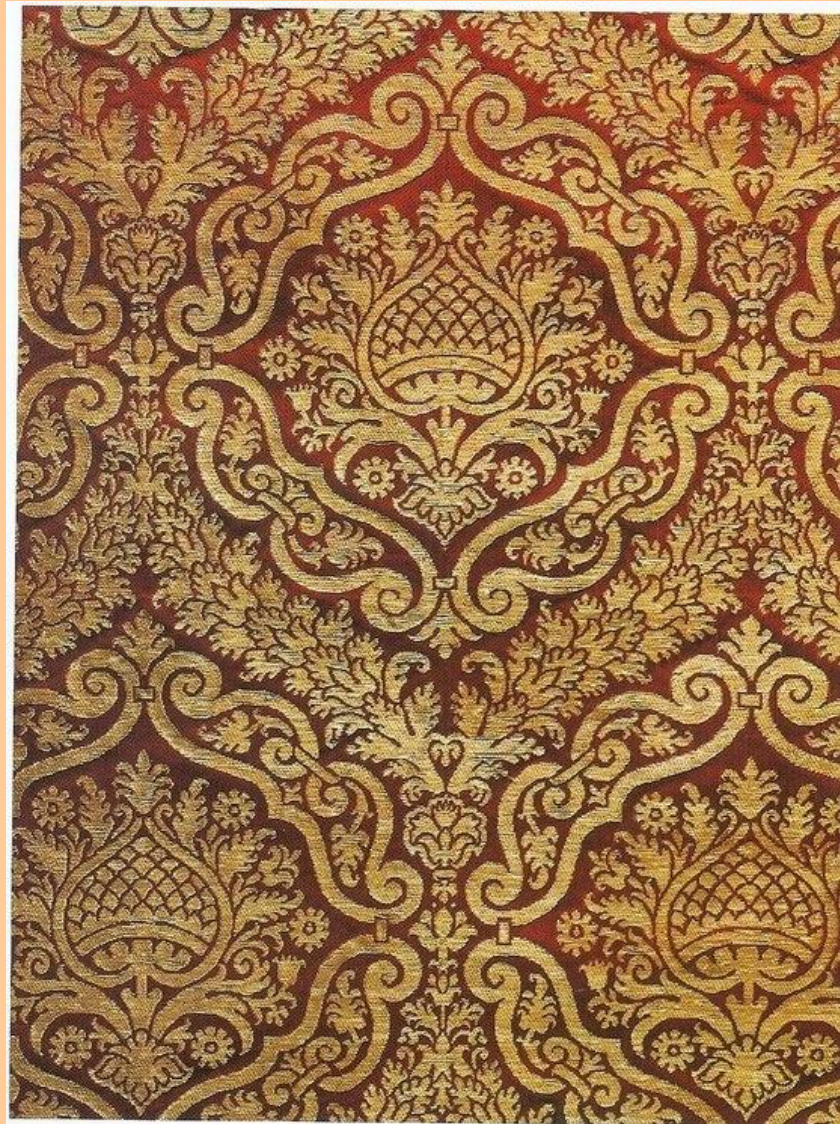
Мужской костюм (Италия XV в.)

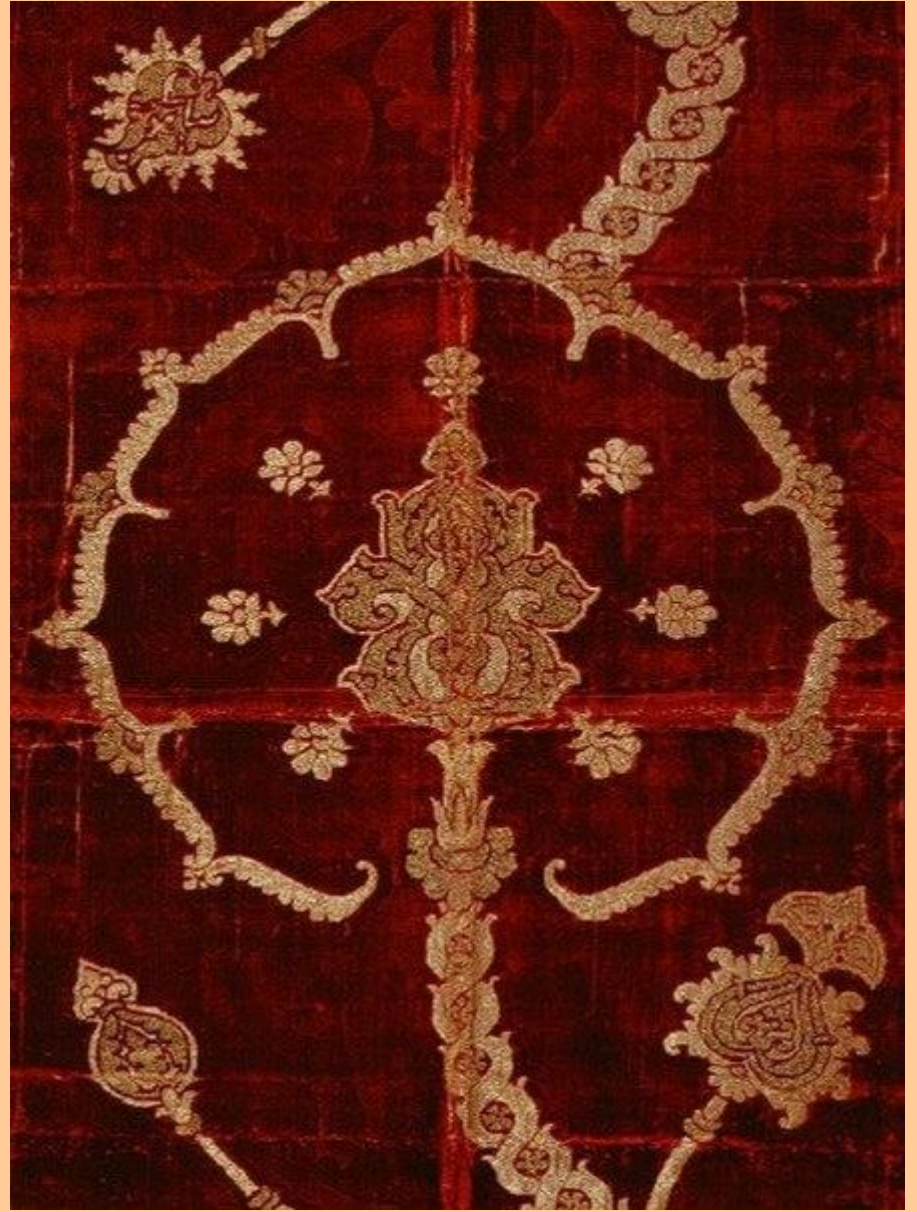


Ткани











Основные элементы мужского костюма

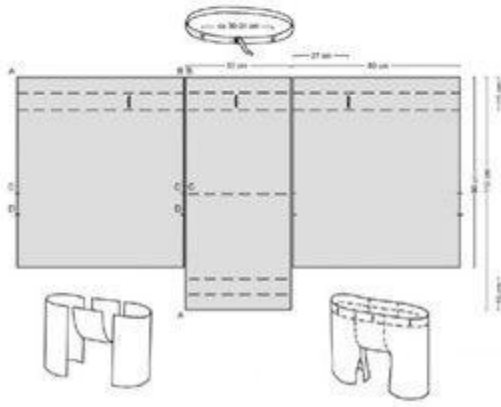
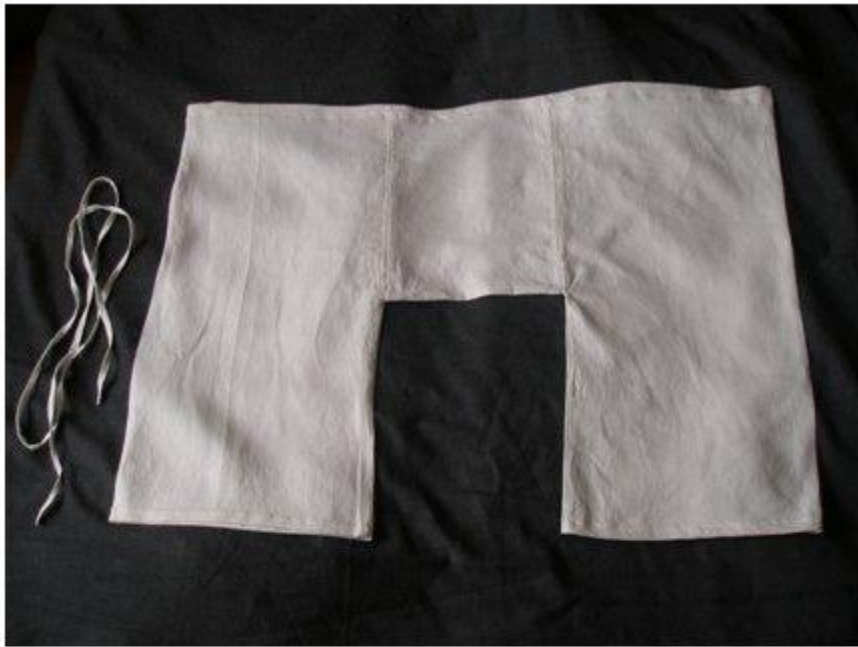


- Брэ
- Камиза
- Шоссы
- Дублет
- Джорно (джорне)
- Претина (претино)
- Головной убор
- Поясная сумка

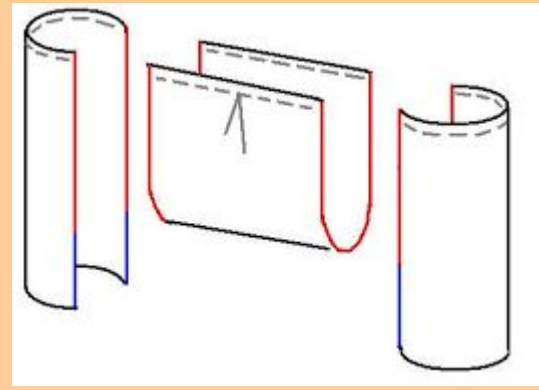
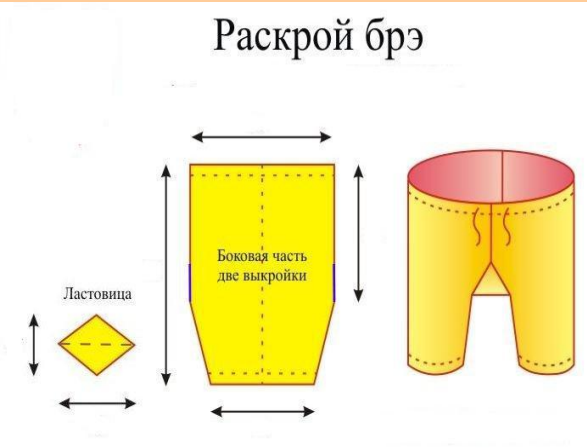
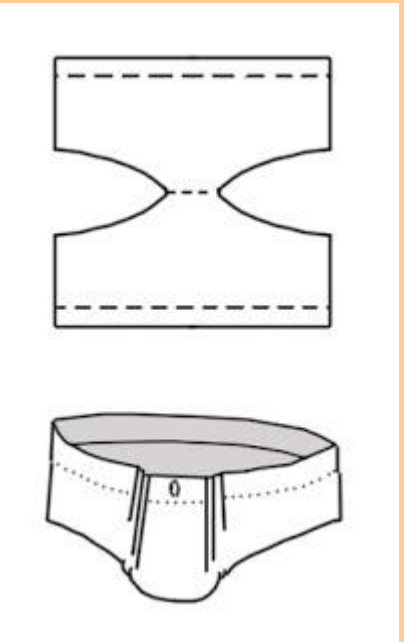
Брэ







Мужские брэ – XIII-XIV век «Furor-Teutonicus»



Нижняя рубашка (камиза)









Шоссы

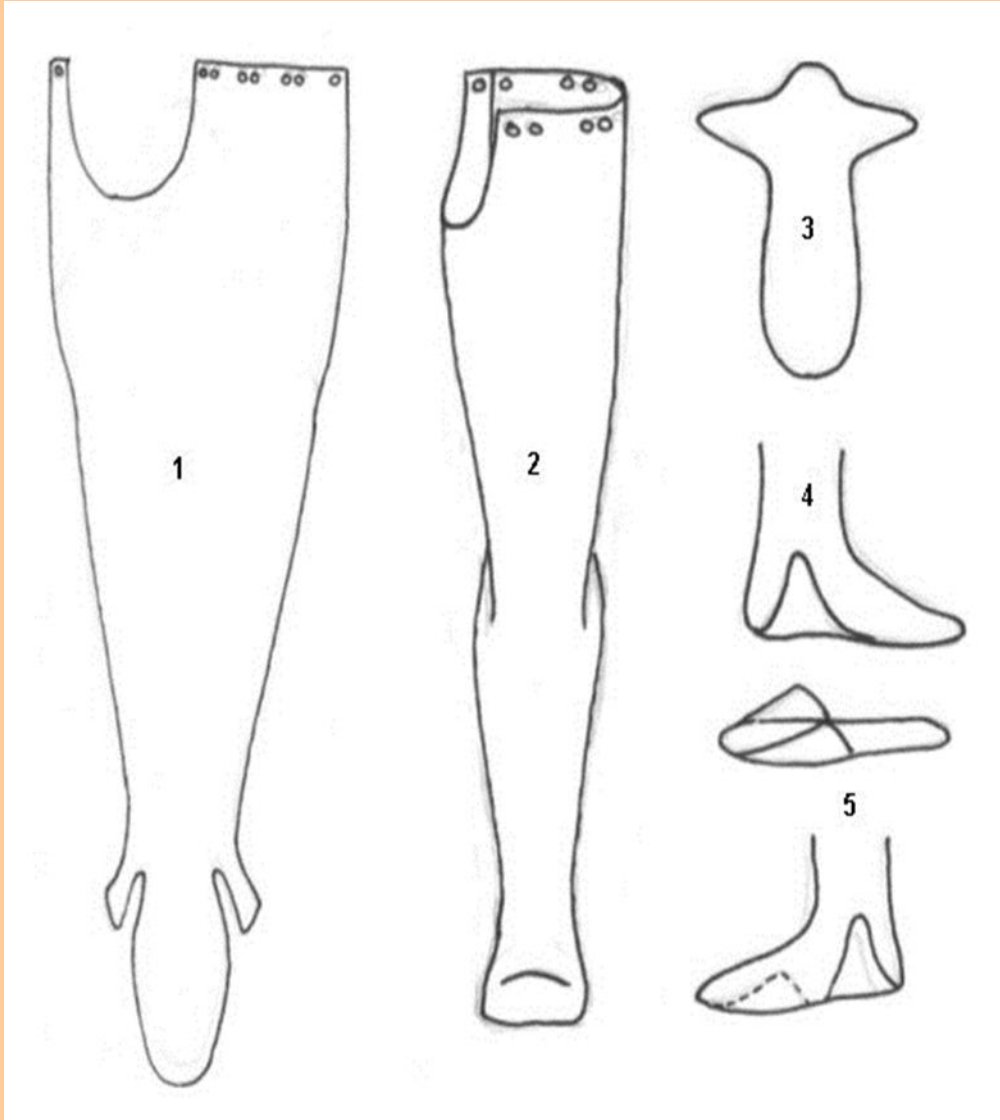




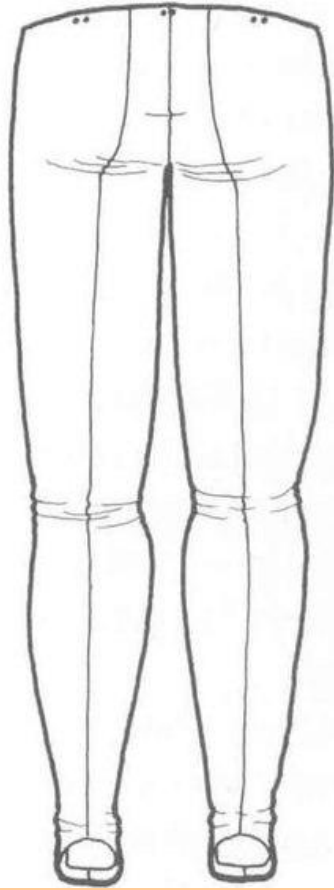
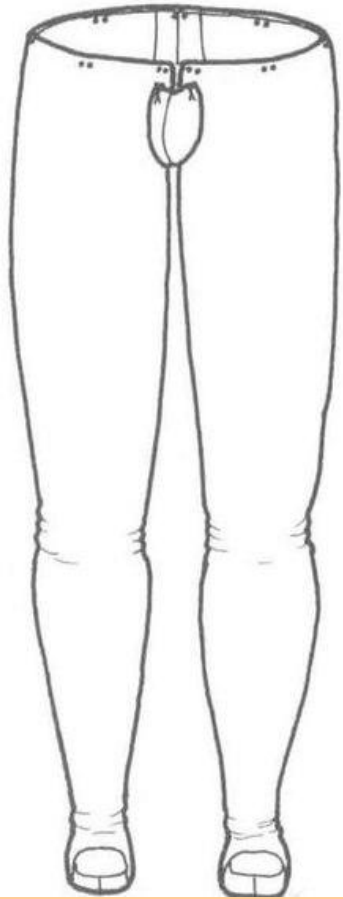




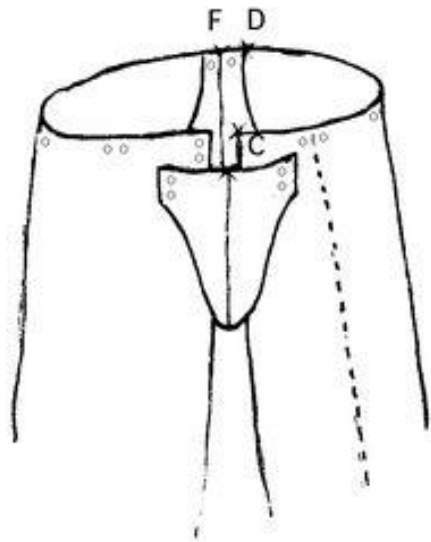




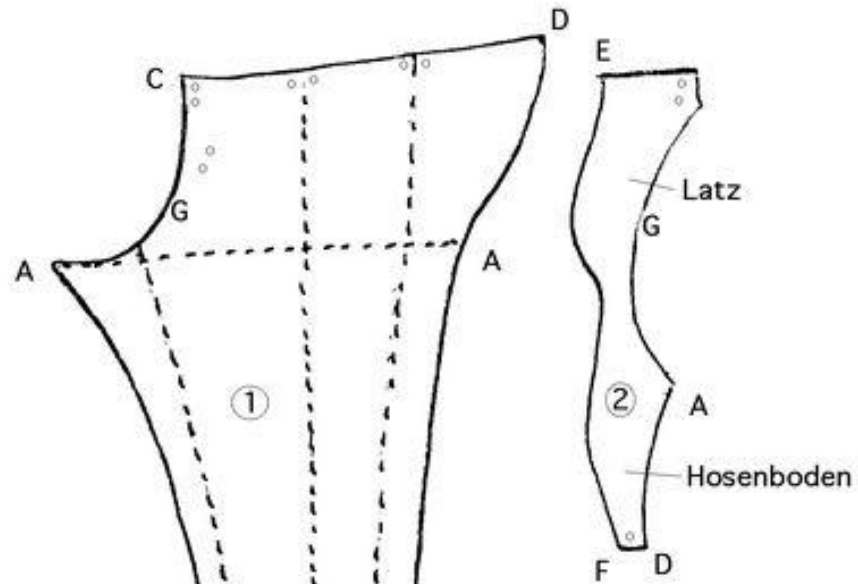
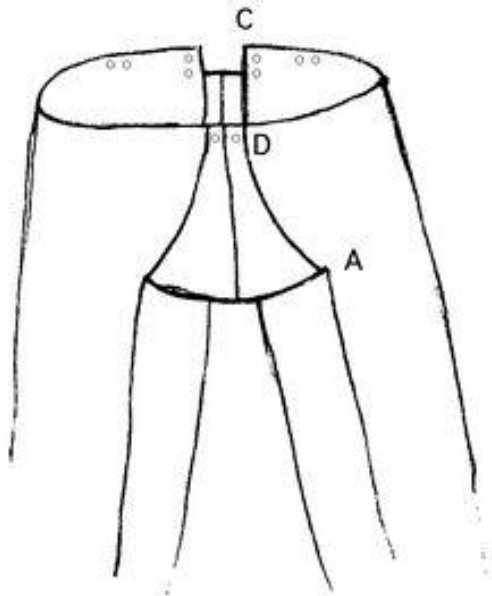




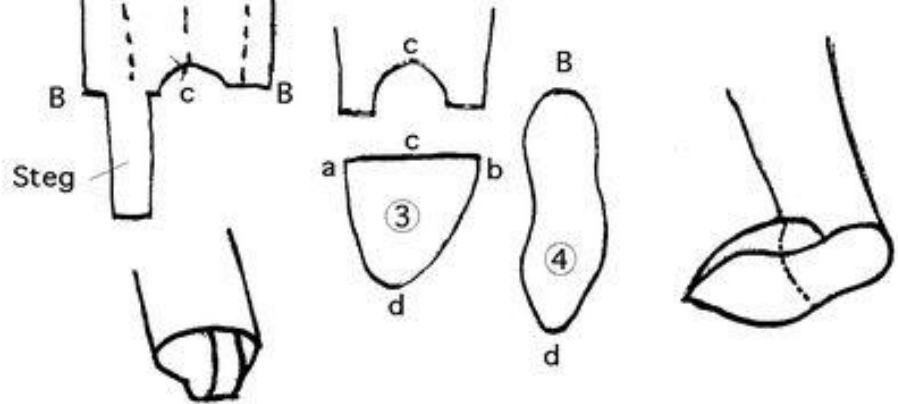
Vorderansicht



Rückansicht



Variante mit Füßlingen

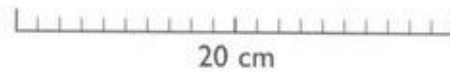
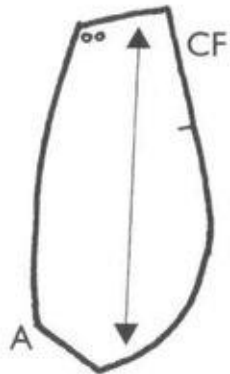
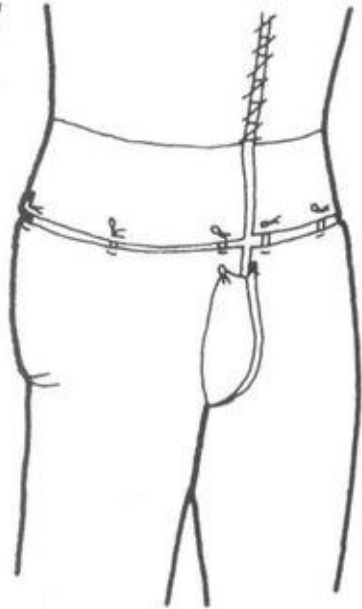


Tobi 99

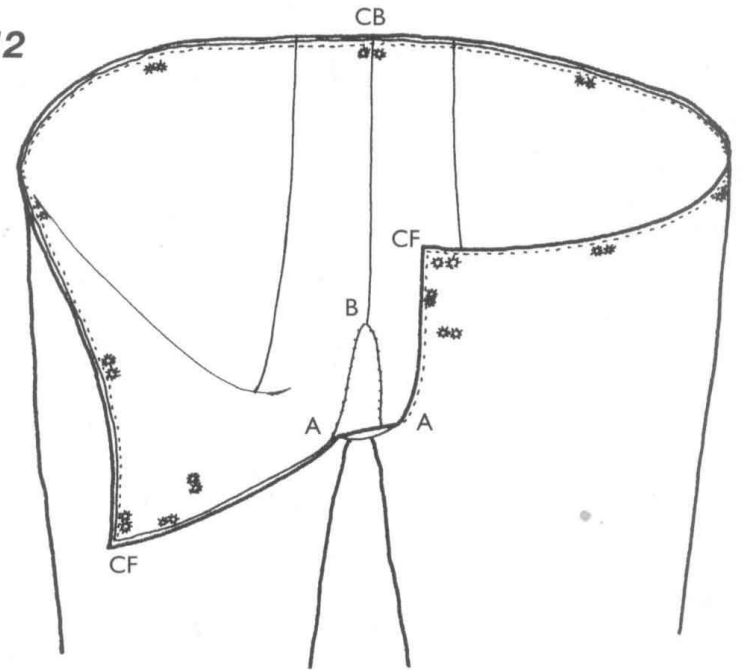


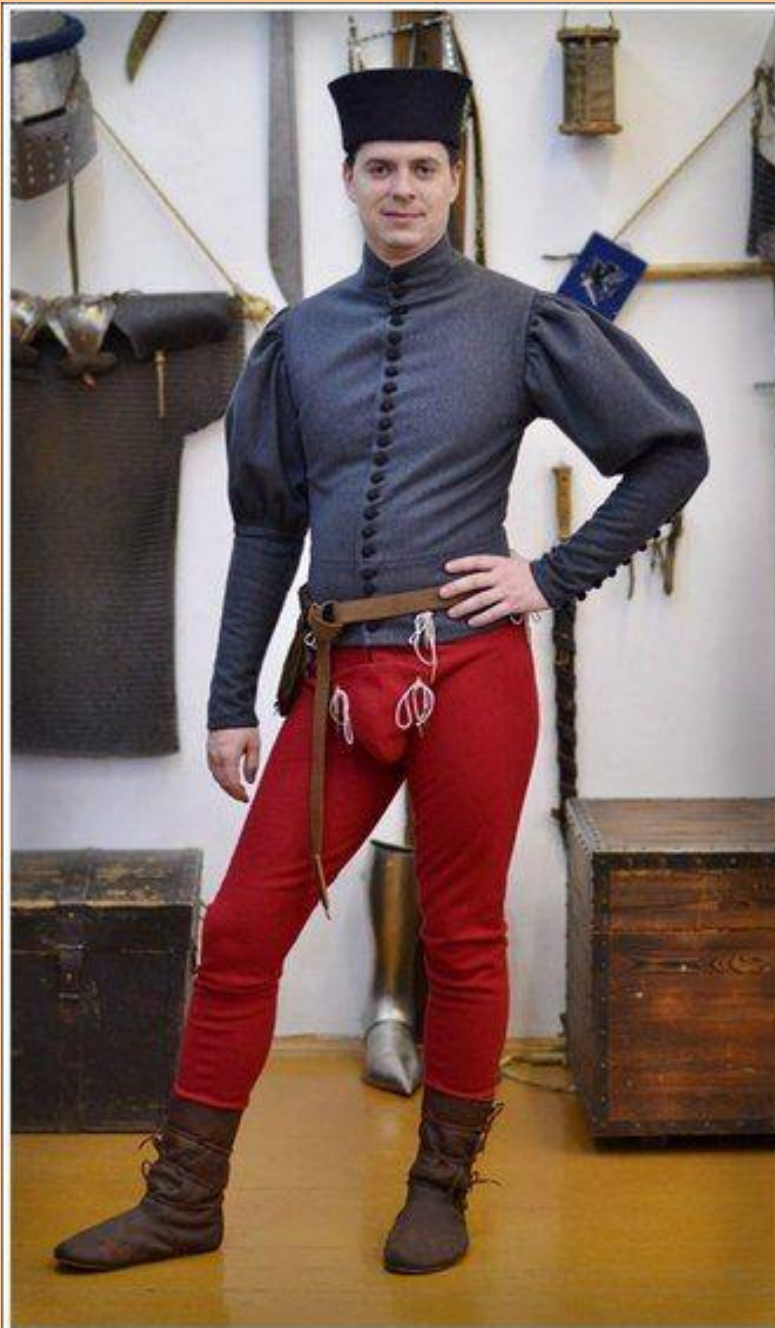
Гульфик

11

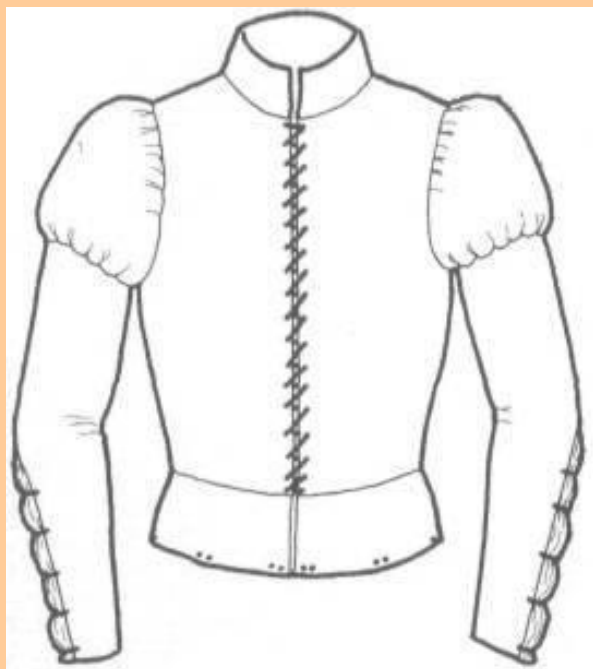


12





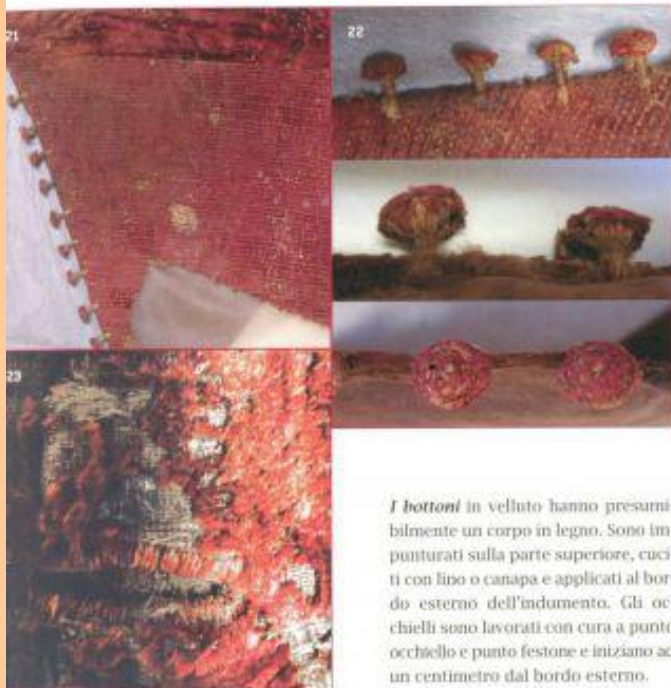
Дублет



Дублет Малатесты 1427 г.

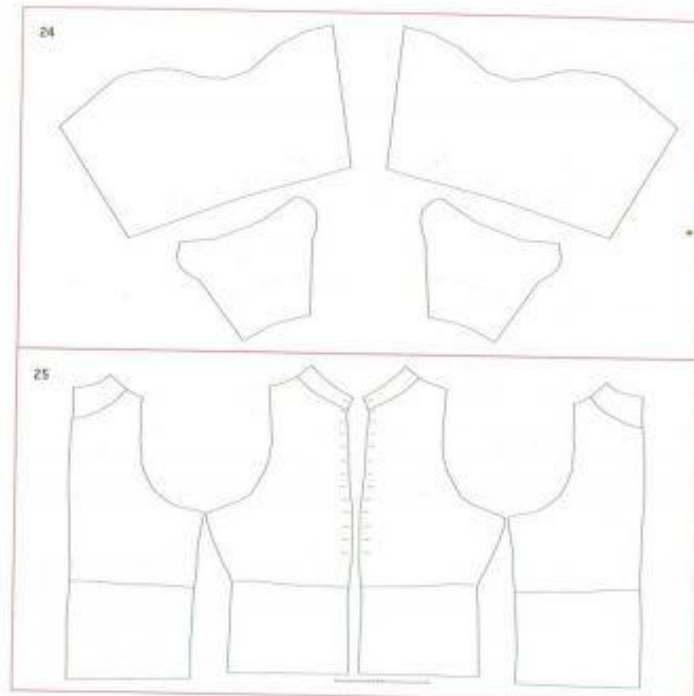






21. Pizzo impunturato.
22. Bottoni.
23. Occhielli.

I bottoni in velluto hanno presumibilmente un corpo in legno. Sono impunturati sulla parte superiore, cuciti con lino o canapa e applicati al bordo esterno dell'indumento. Gli occhielli sono lavorati con cura a punto occhio e punto festone e iniziano ad un centimetro dal bordo esterno.



24. Cartamodello maniche.
25. Cartamodello davanti e dietro.

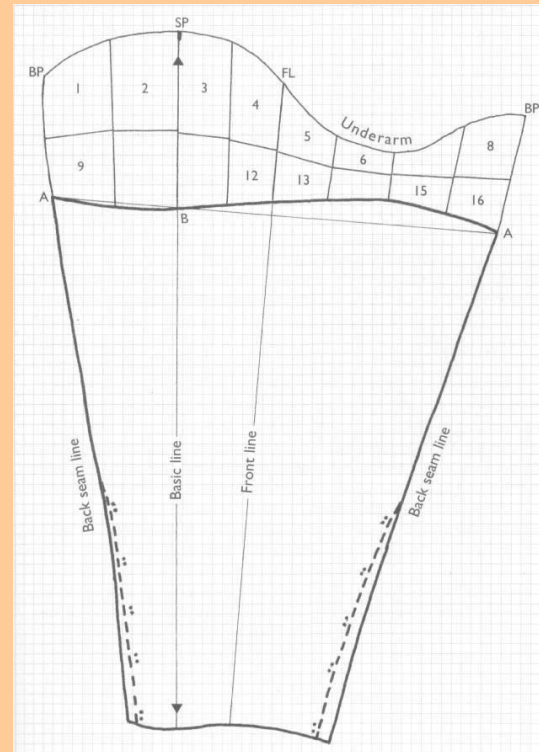
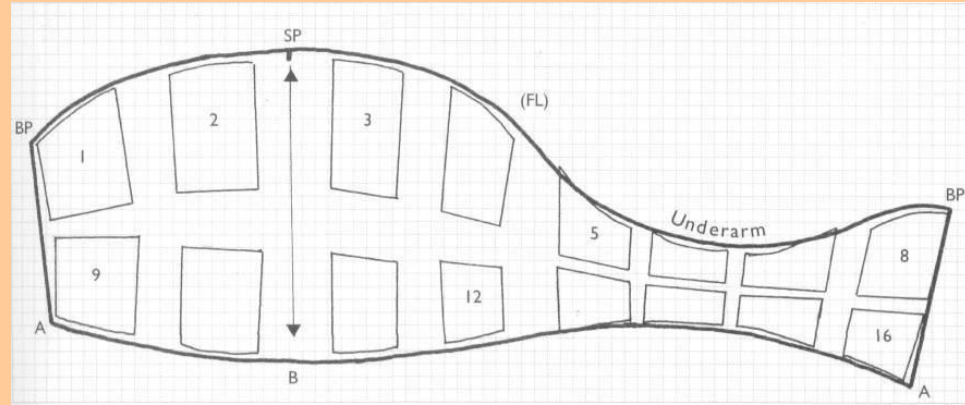
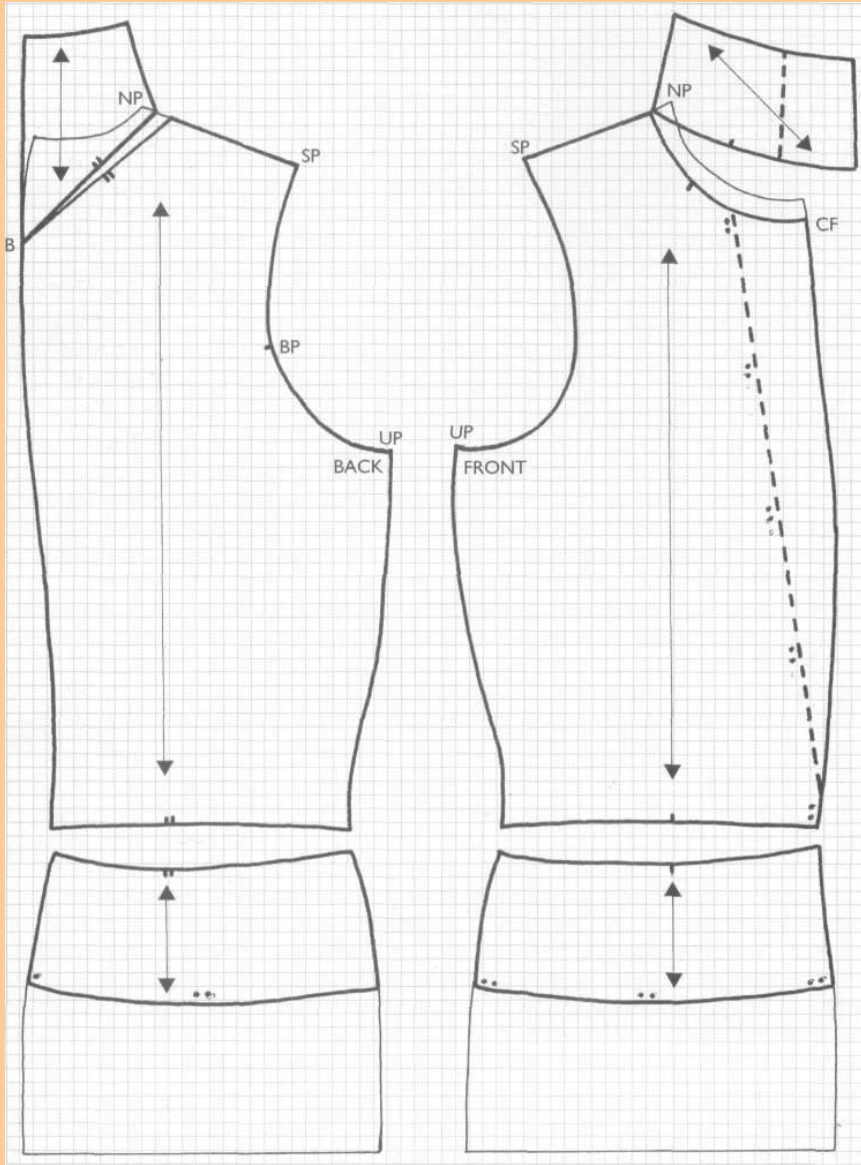






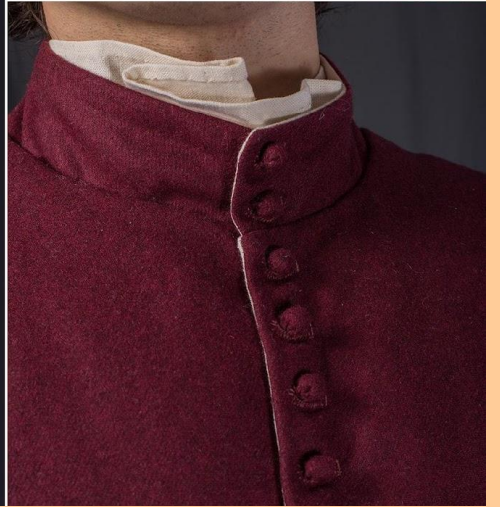














LUCIANO VERZOLA 2015
TORNEO IN ARMATURA

Джорно (джорне)

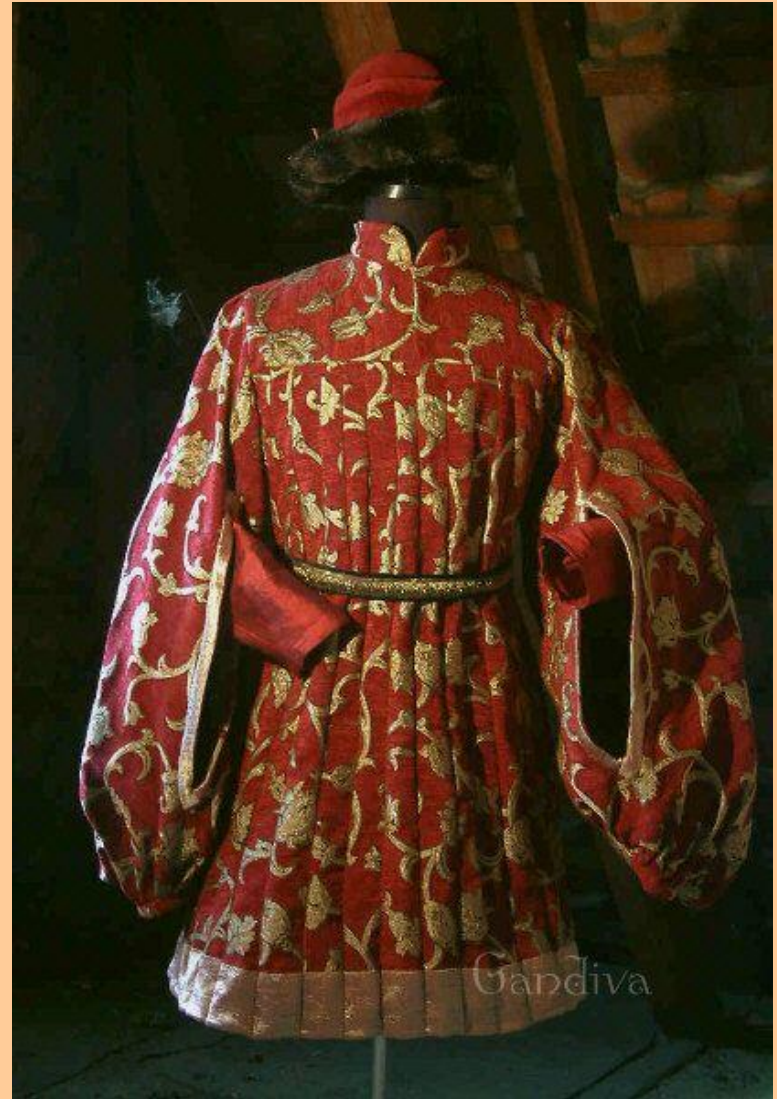












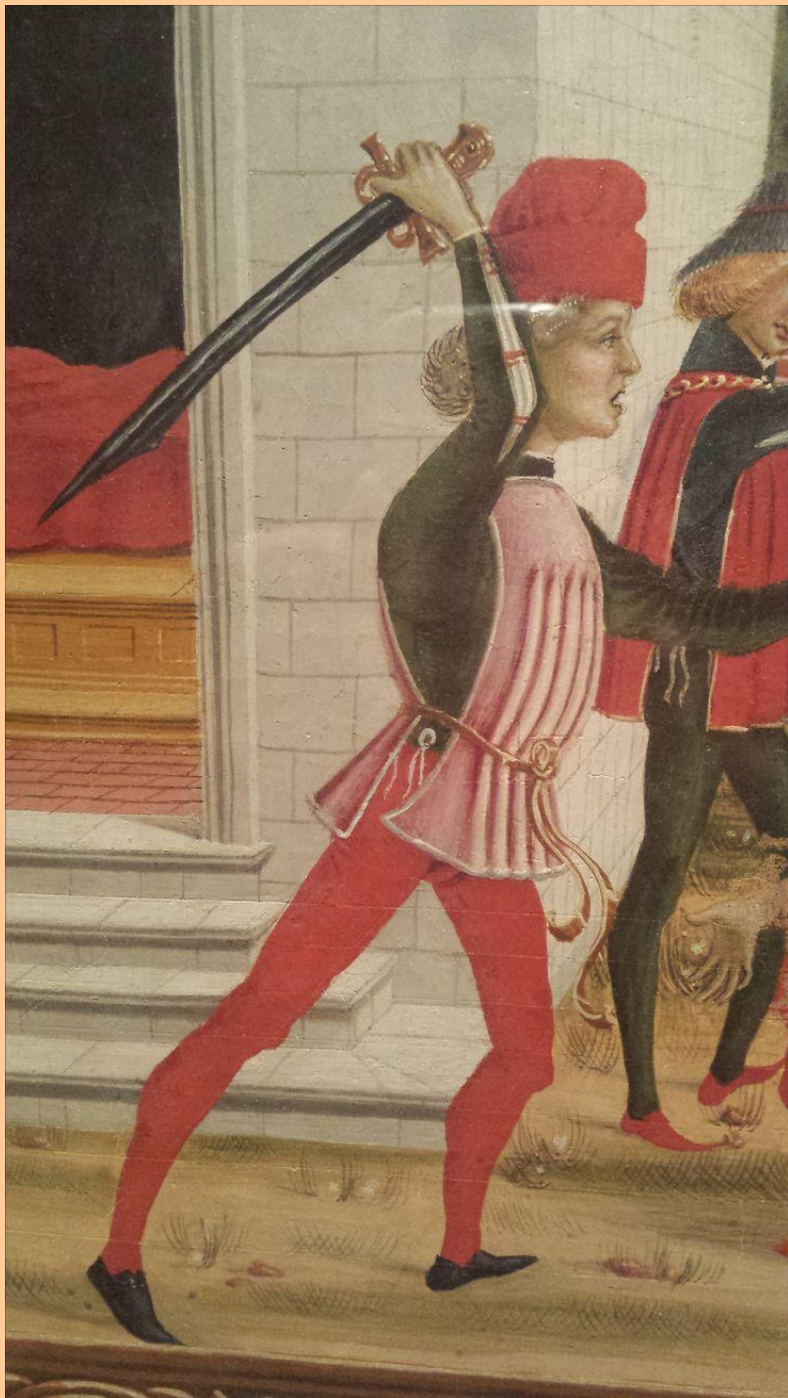


Претина (претино)









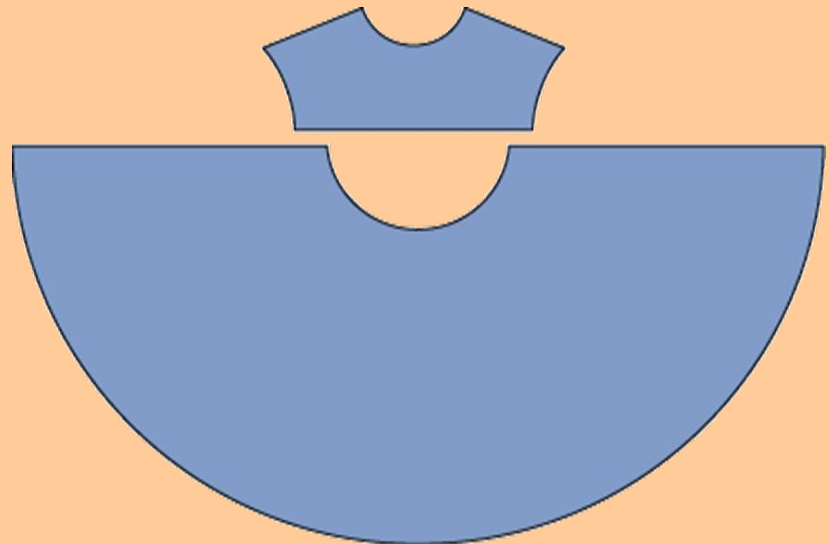
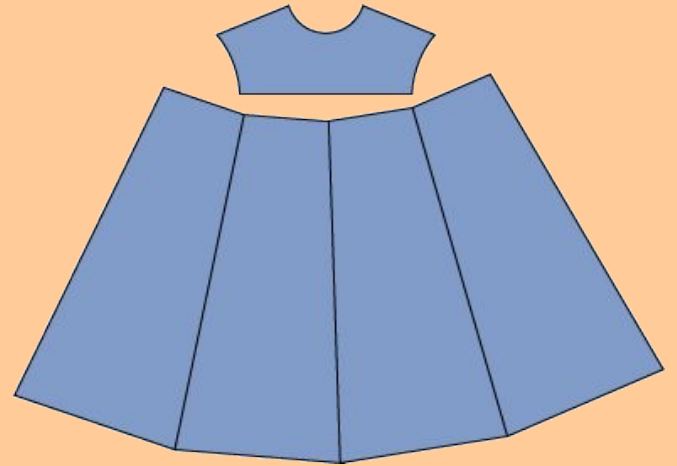








© FAMALEONIS - 2014
CAMILLO BALOSSINI









www.medievaldesign.com



Евгения А. Новикова © 2013



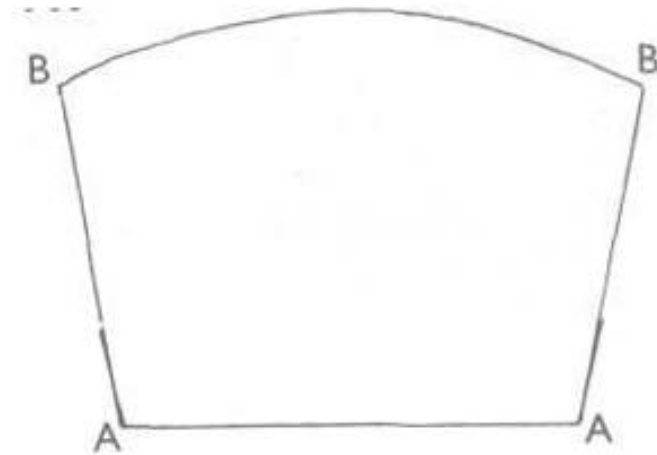
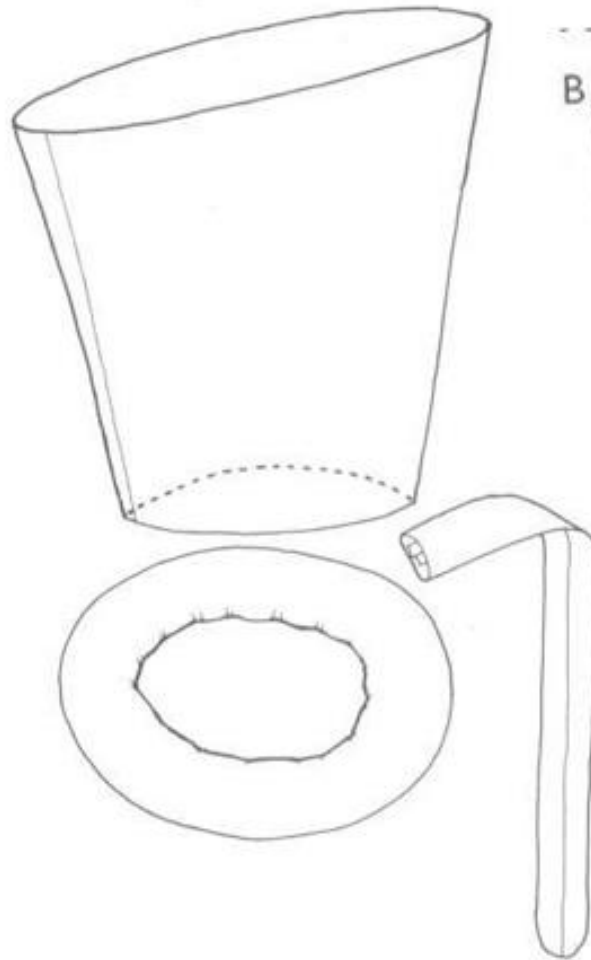
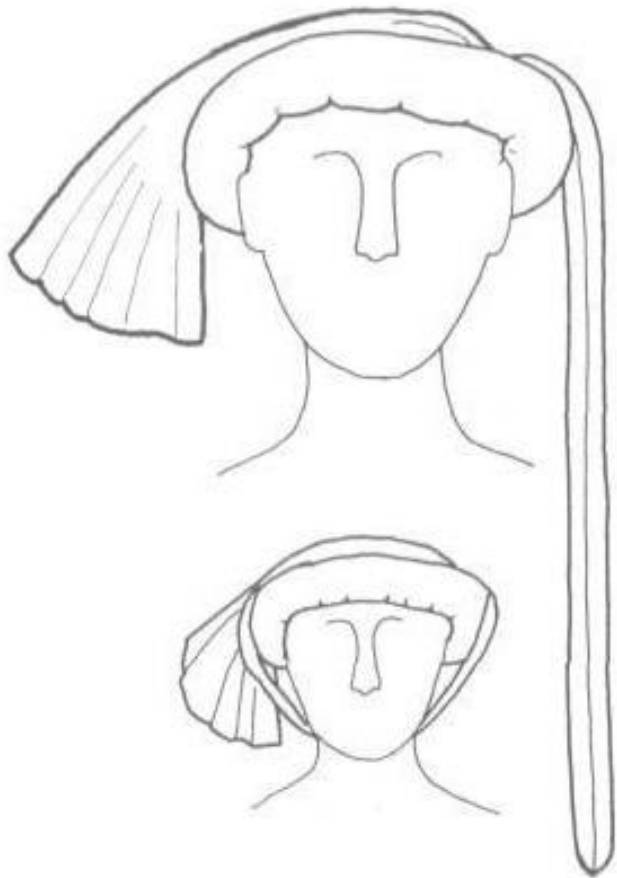
LUCIANO VERZOLA 2015
TORNEO IN ARMATURA

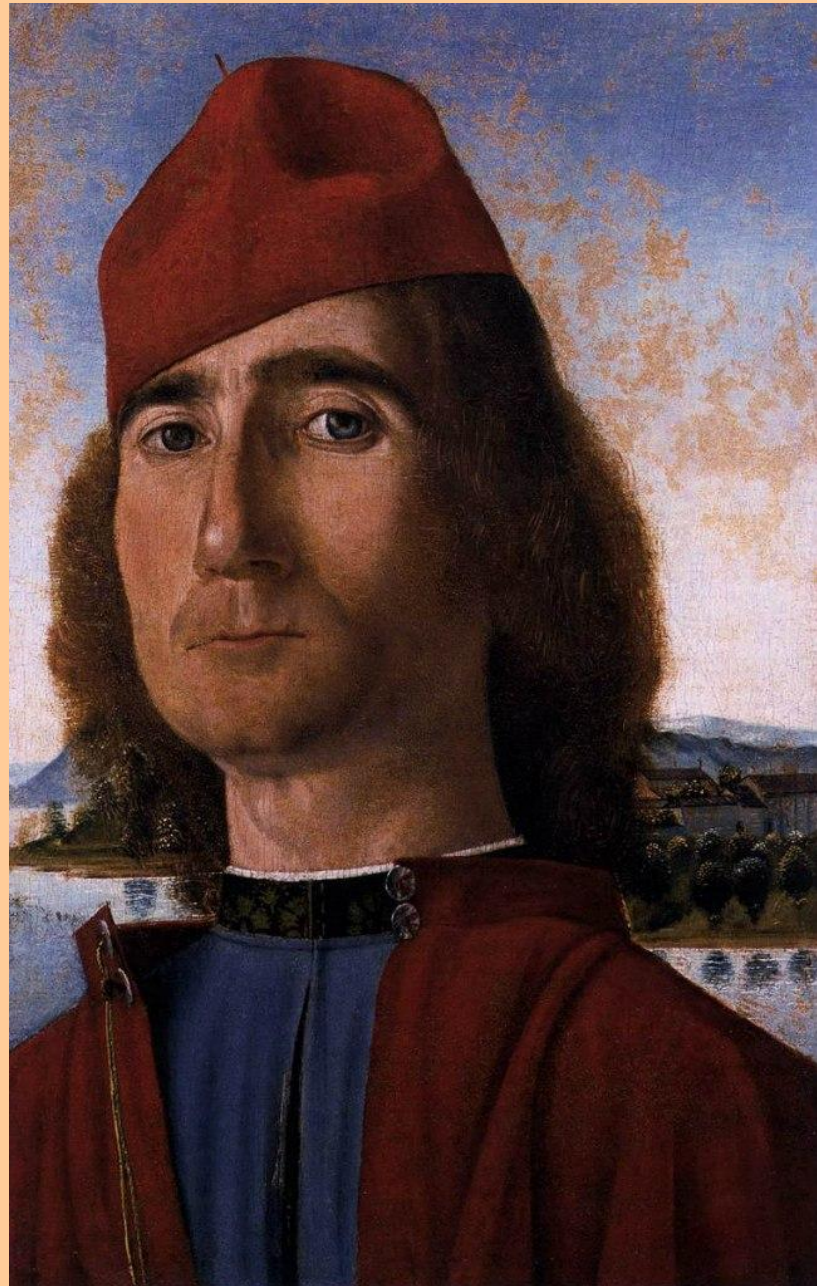
Головные уборы





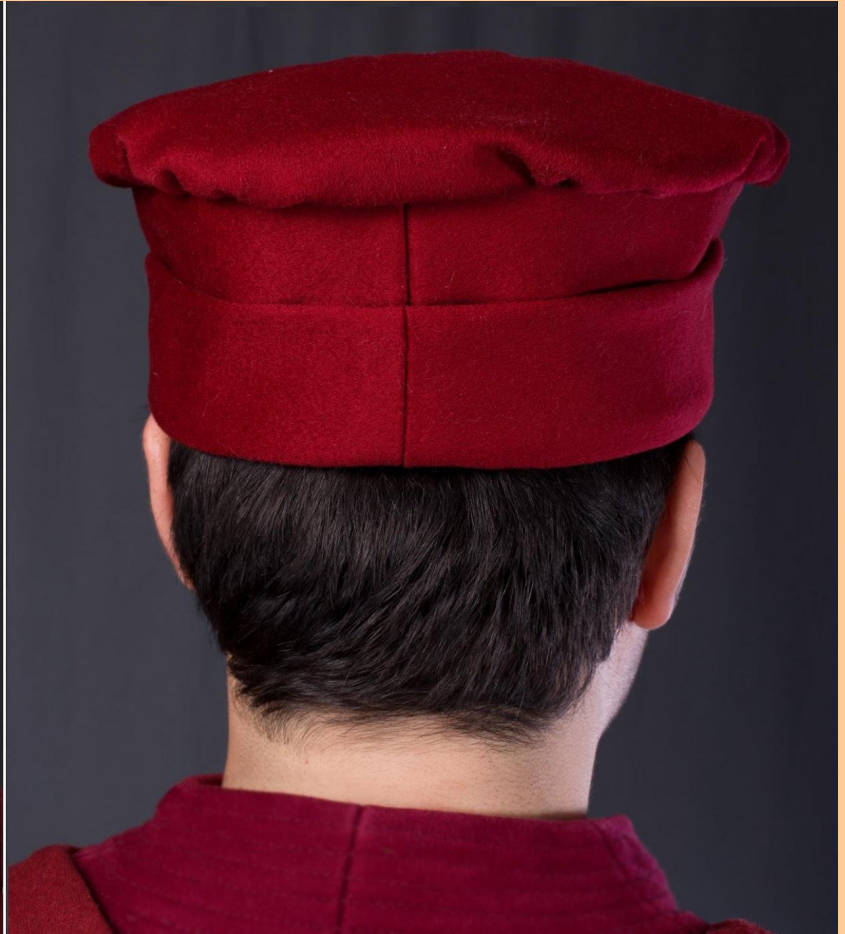
Шаперон















Поясные сумки

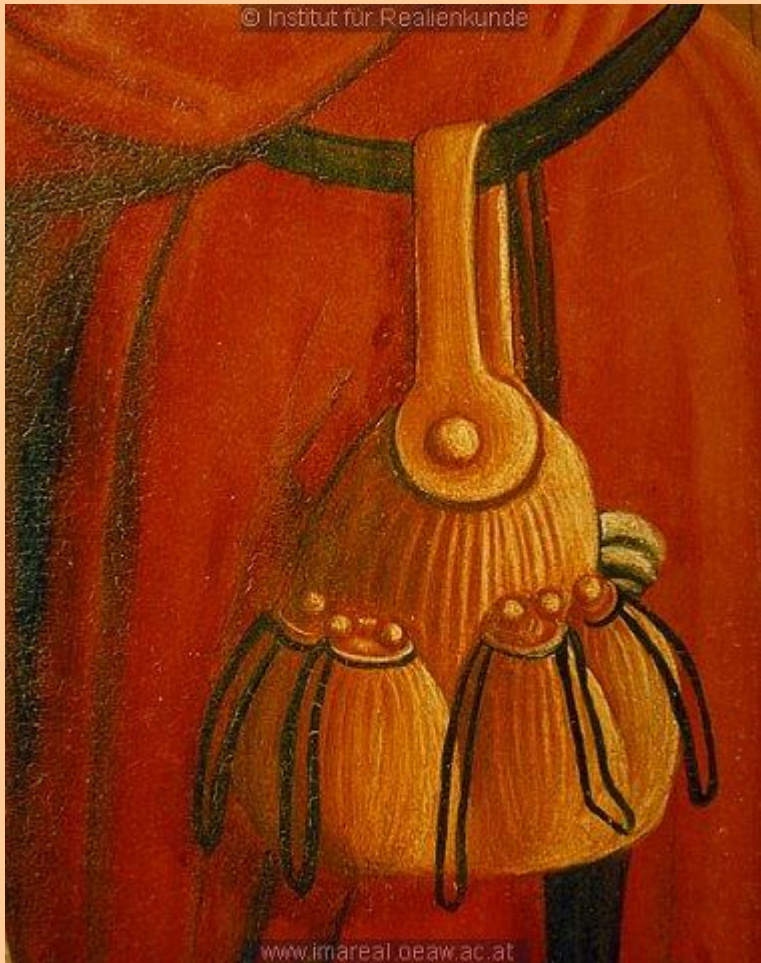


«Фасолевидные» сумки





«Мешочные» сумки





Germanisches Nationalmuseum
Restaurierungsdokumentation
Inv. Nr./Sign.: *Hg 5579*
Prot. Nr.: *I* Abb. Nr.: *1*





Спасибо за внимание!

