

Medical Academy named after S.I.Georgievsky of Vernadsky

## CRIMEA FEDERAL UNIVERSITY



- TOPIC – Phylogenetic Disorders of Skulls
- SUBJECT – MEDICAL BIOLOGY

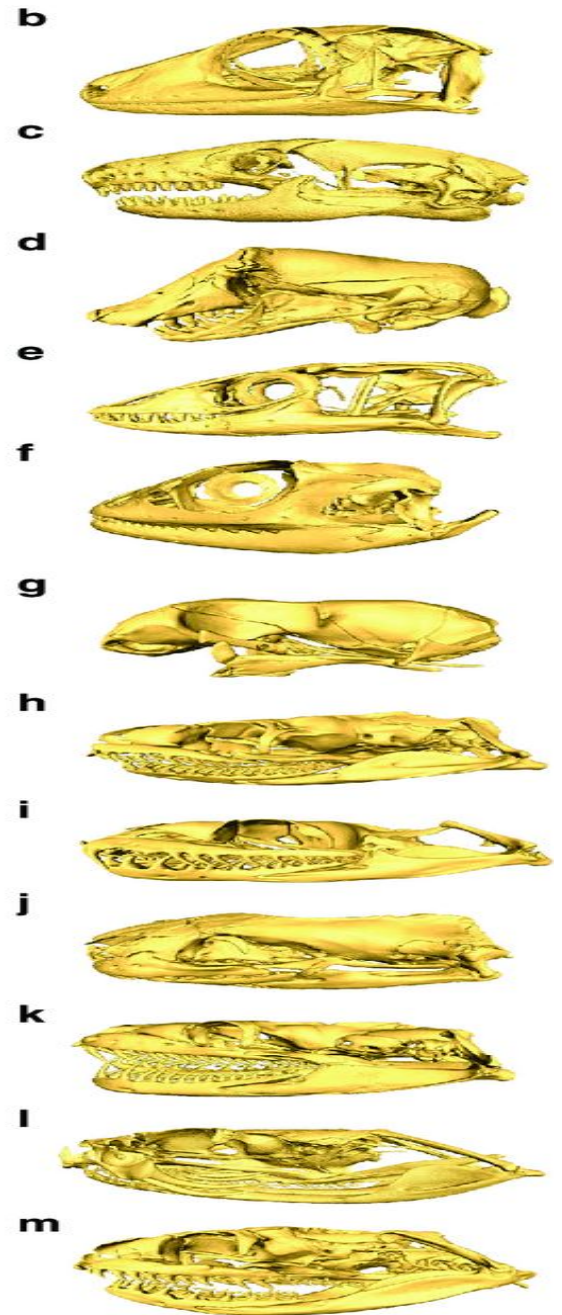
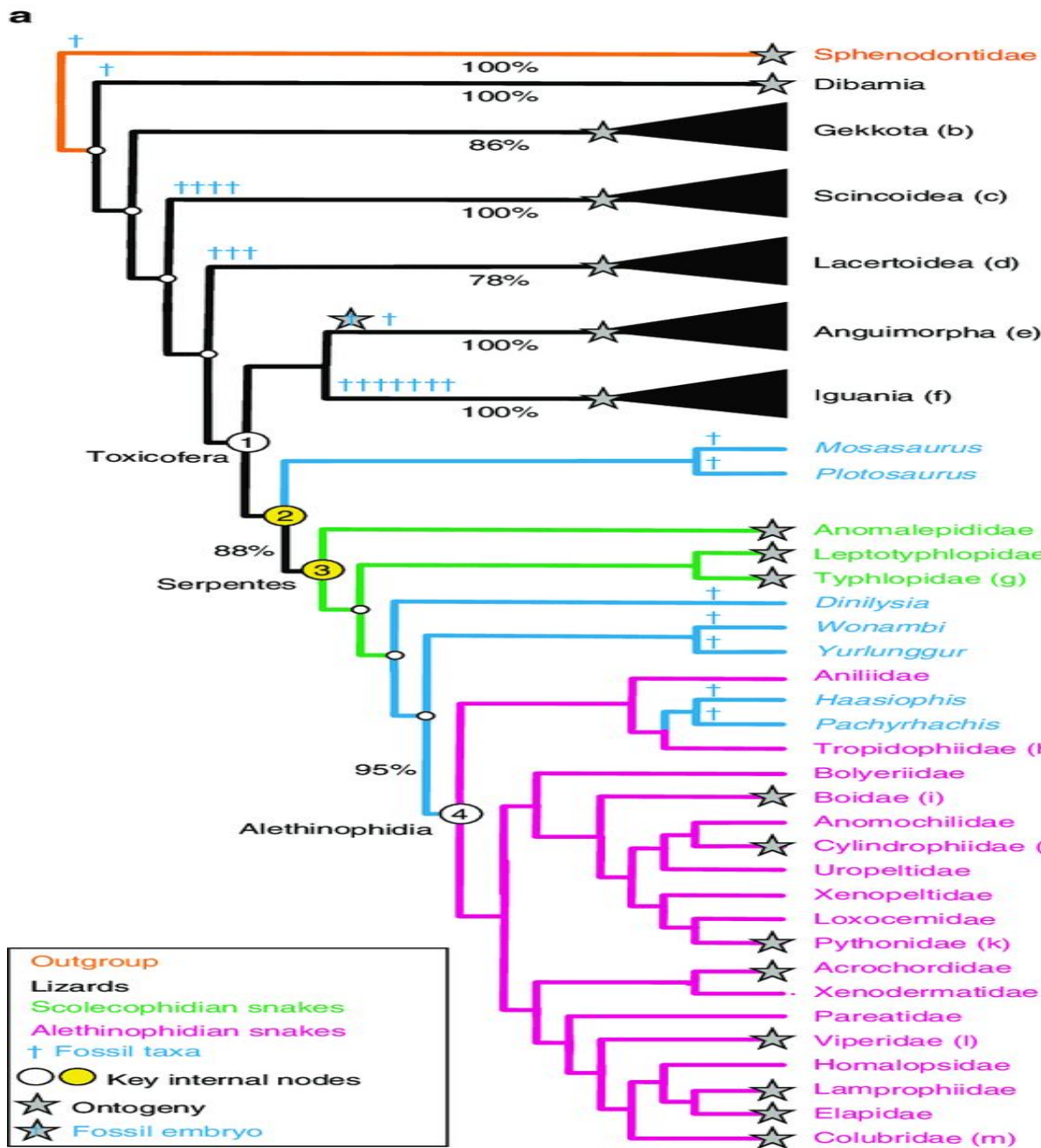
NAME – Manivel Praveen

LA1-191 B

# Introduction

1 :The evolutionary history of a kind of organism.

2 : the evolution of a genetically related group of organisms as distinguished from the development of the individual organism called phylogenesis. — compare ontogeny.

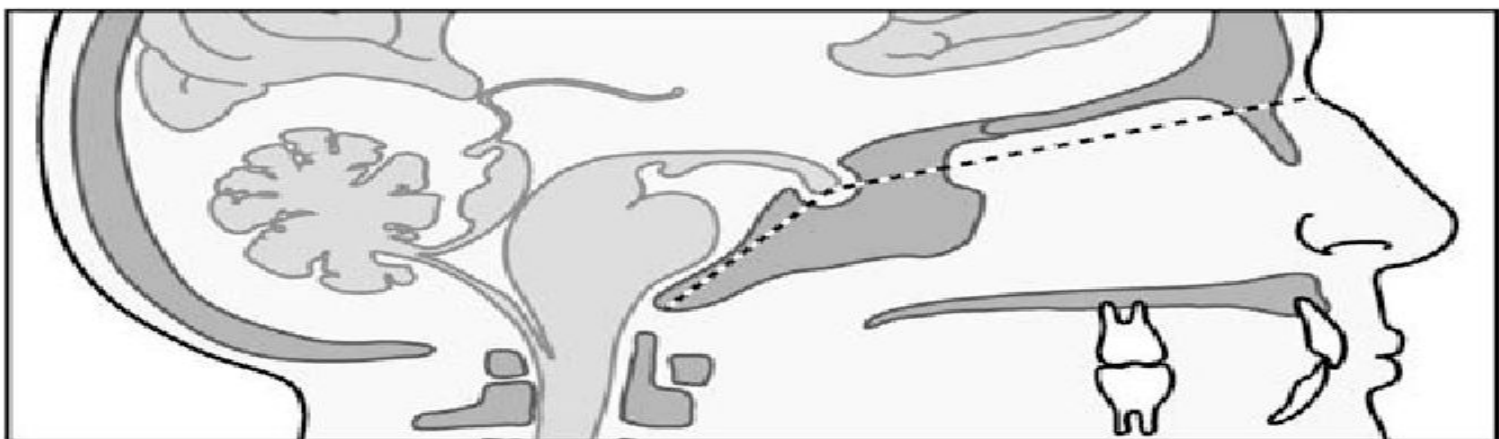
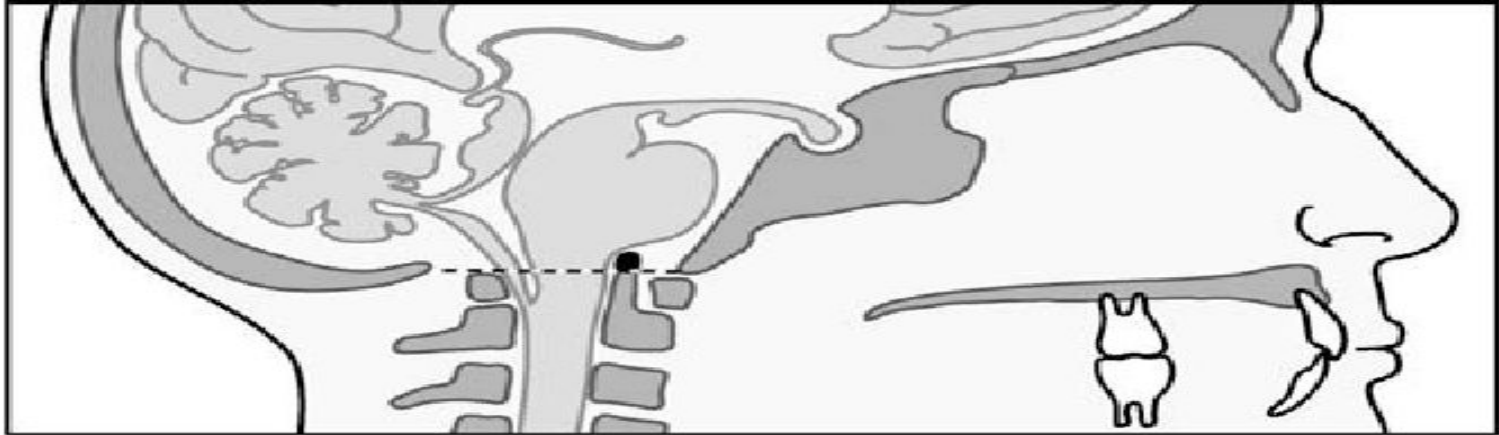


# Craniosynostosis

Craniosynostosis is a congenital deformity of the infant skull that occurs when the fibrous joints between the bones of the skull (called cranial sutures) close prematurely. Due to this closure, the baby develops an abnormally shaped skull because the bones do not expand normally with the growth of the brain.

# Cranial Base Disorder

The cranial base is a small, yet highly complex area at the bottom portion of the skull where every nerve that connects the brain with the rest of the body must move through. If you have a cranial base disorder, you may experience neurological problems such as headaches, facial pain, blurred vision, dizziness, or seizures. These symptoms tend to occur when the tumor has grown large enough to press against nerves or the brain



Penn Medicine's Cranial Base Surgery team specializes in evaluating and treating cranial base disorders such as:

Acromegaly

Cerebrospinal fluid (CSF) leaks

Cushing's disease

Facial nerve disorders

Meningioma

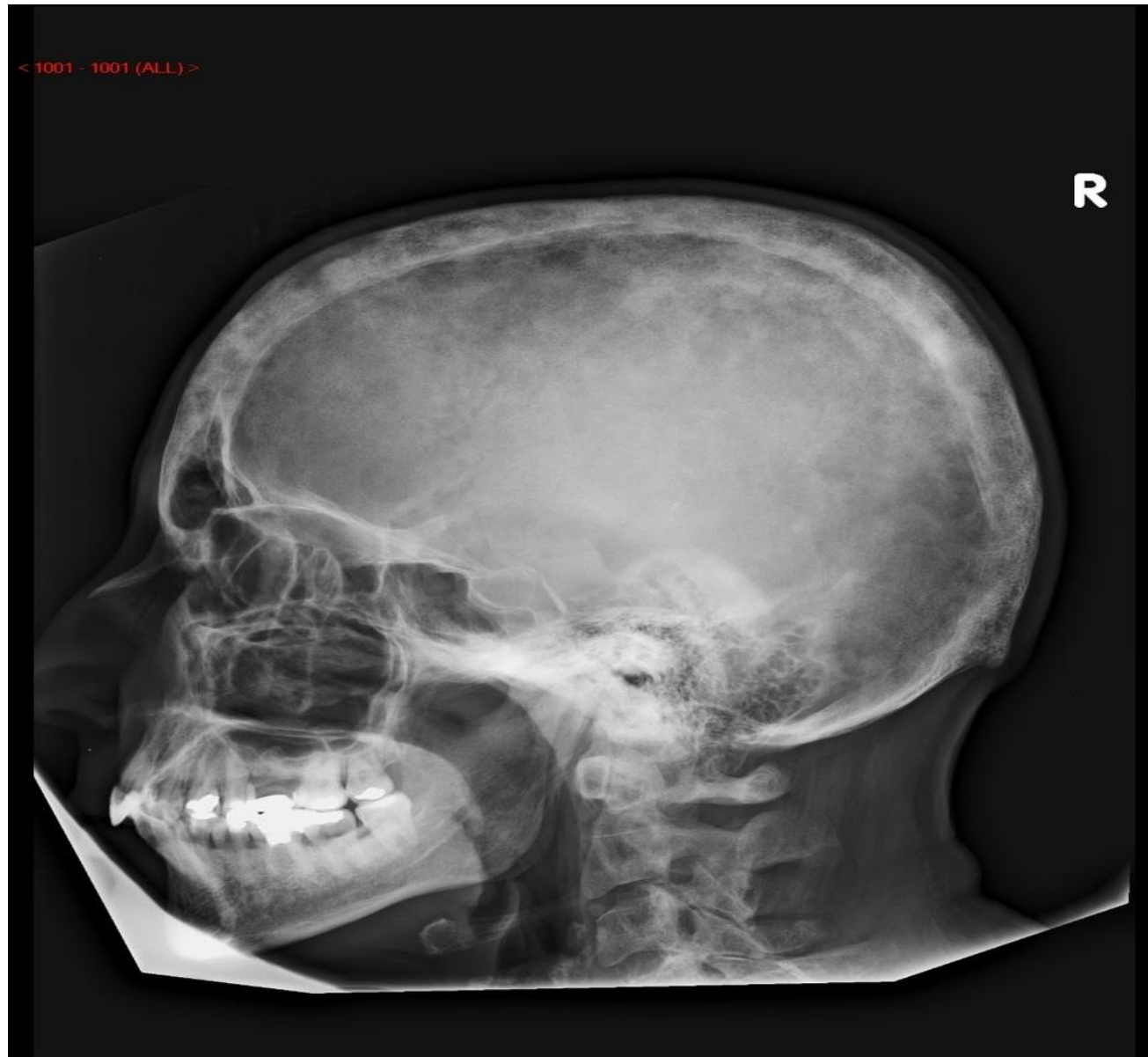
Pituitary tumors

# Paget's disease

**Paget's disease** of bone interferes with your body's normal recycling process, in which new bone tissue gradually replaces old bone tissue. Over time, the **disease** can cause affected bones to become fragile and misshapen. **Paget's disease** of bone most commonly occurs in the pelvis, skull, spine and legs



# X – Ray of pegets disease

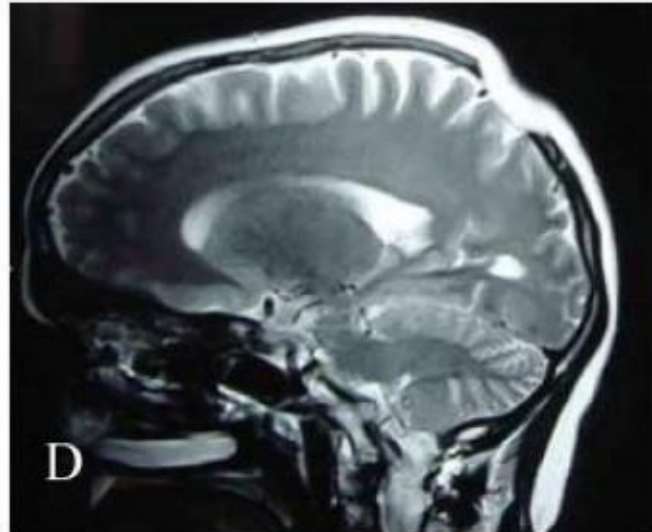
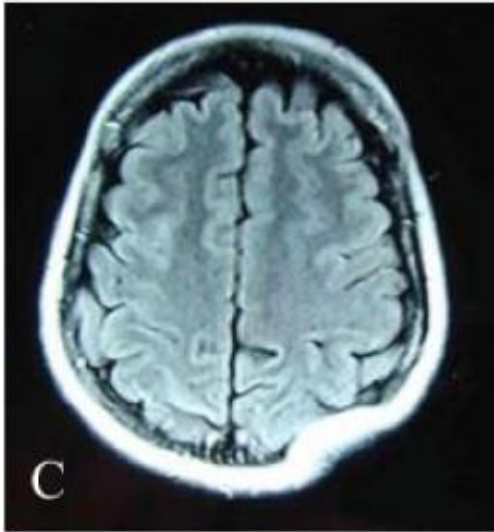
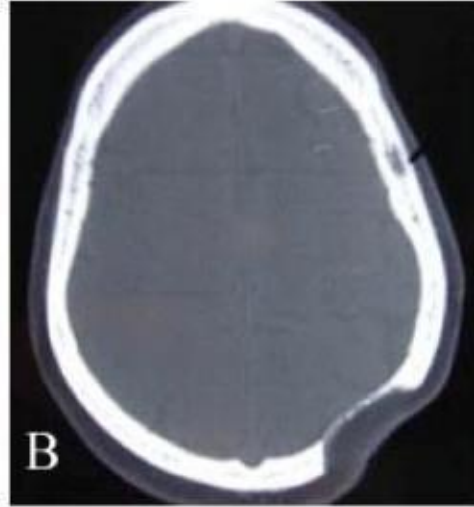
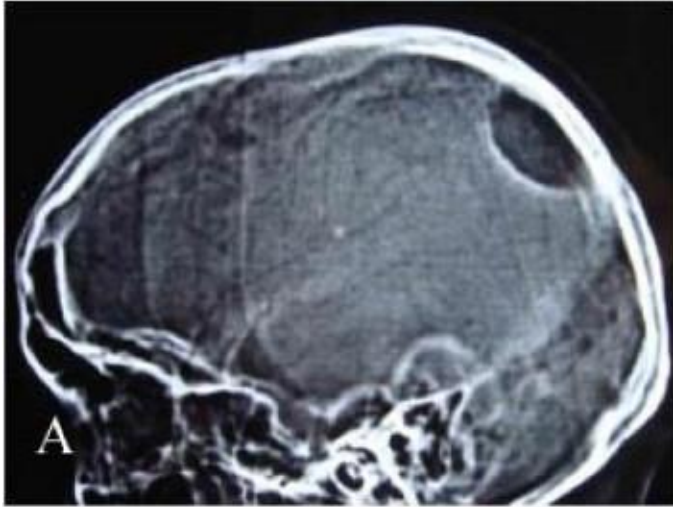


# Gorham's disease

Gorham's disease is a rare condition that leads your bone mass to be replaced by other kinds of tissue. Gorham's disease can cause bone loss in your skull, leading to a visible dent in some cases.

## Congenital skull indentation

Sometimes babies are born with an indentation in their skull. These indentations can be caused by the birth process or by the way the baby was positioned in their mother's womb. If the bones in a baby's skull fuse prematurely, the baby's head may appear dented or misshapen — a condition called craniosynostosis.



# Treatment for bone diseases

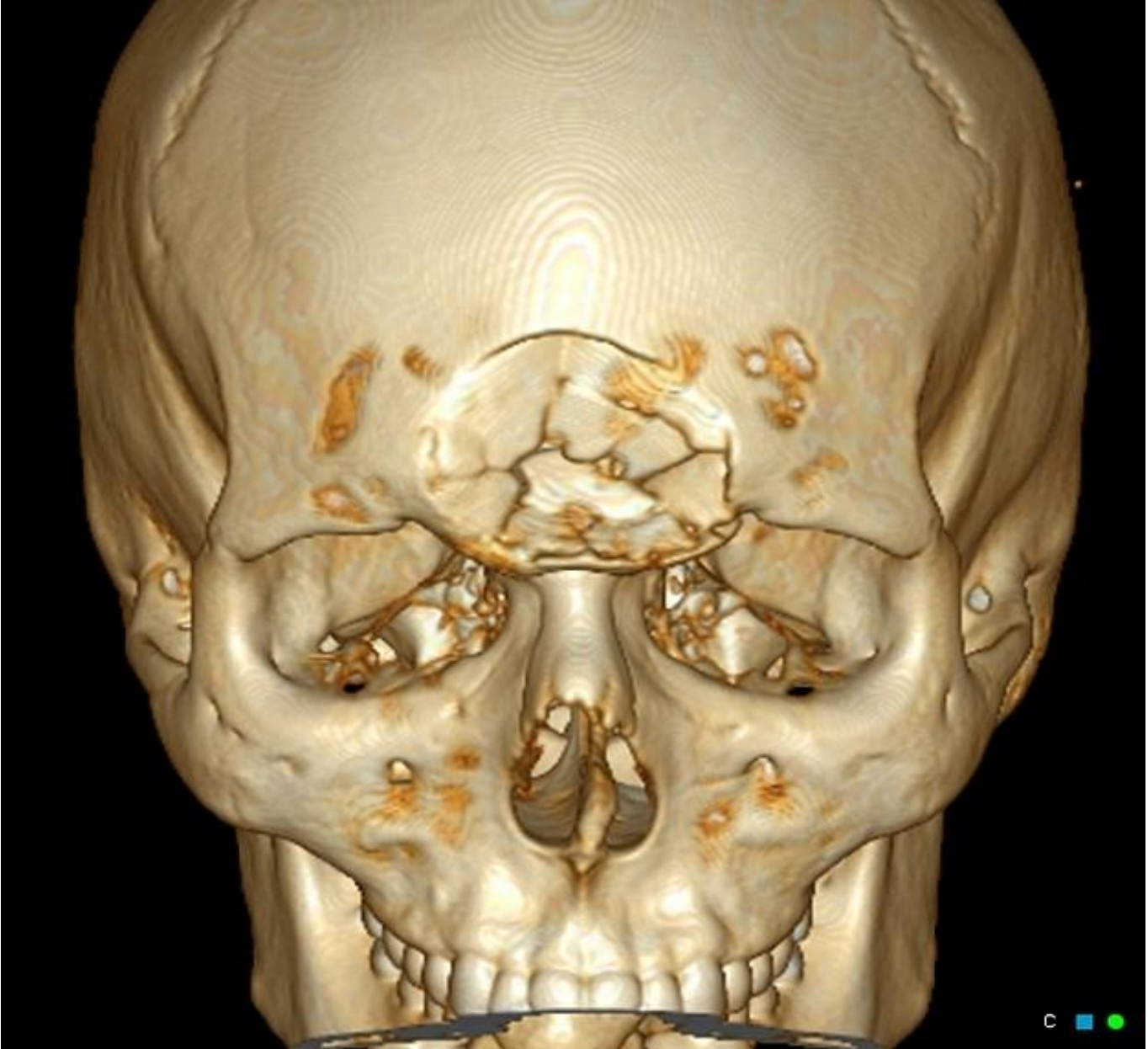
If you have Paget's disease of bone, Gorham's disease, or another rare bone disease that's causing your skull dent, your doctor may prescribe bisphosphonates — drugs that keep your body from absorbing your bone tissue. Alendronate (Fosamax) and ibandronate (Boniva) are examples of these drugs.

Some people may need bone grafts to surgically correct the loss of bone mass in their skull.

Treatment for babies with skull dents When a baby is born with a head dent or skull abnormality, the symptoms will usually resolve Trusted Source on their own within 6 months.

In some cases, helmet therapy may be recommended. There are also cases when surgery is required to correct the skull shape and make sure that the baby's brain has enough room to develop as it grows.

Some of the most common types of craniofacial anomalies include the following: Cleft lip and/or cleft palate. A separation that happens in the lip or the palate (roof of the mouth), or both. Cleft lip and cleft palate are the most common congenital craniofacial anomalies seen at birth.



# Depressed Fracture

Trauma Car accidents, falls, or severe blows to the head can cause what's called a depressed fracture in your skull. A depressed fracture means that a part of your skull has been crushed in toward your brain. This kind of injury requires emergency medical treatment.

Any significant head injury should be immediately evaluated by a doctor.



