



# INDIVIDUAL WORK

Prepared by Maermanova I.  
Group 2067, «General medicine»

Under the supervision of the foreign  
languages department teacher T.  
G.Dashkina



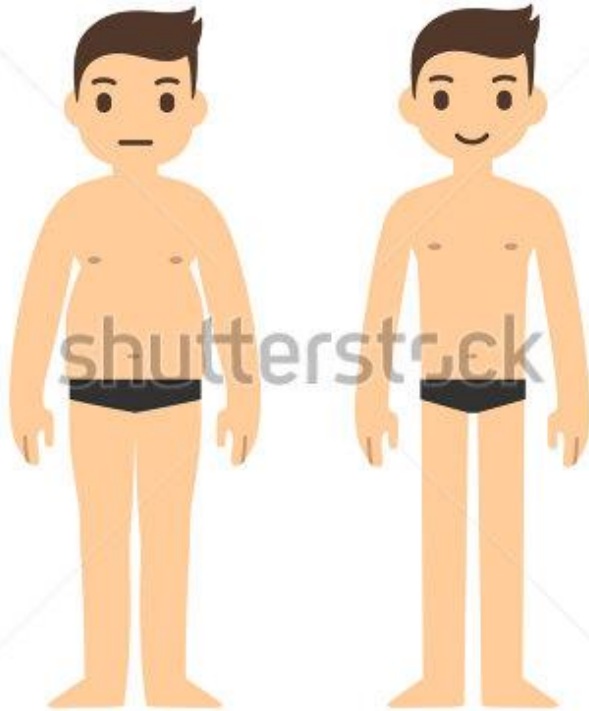
# Lung abscess

Dr / Hytham Nafady



**LOSS OF APPETITE**

# *LOSS OF BODY WEIGHT*



www.shutterstock.com · 226438700

# Chronic Fatigue Syndrome



*FATIGUE*

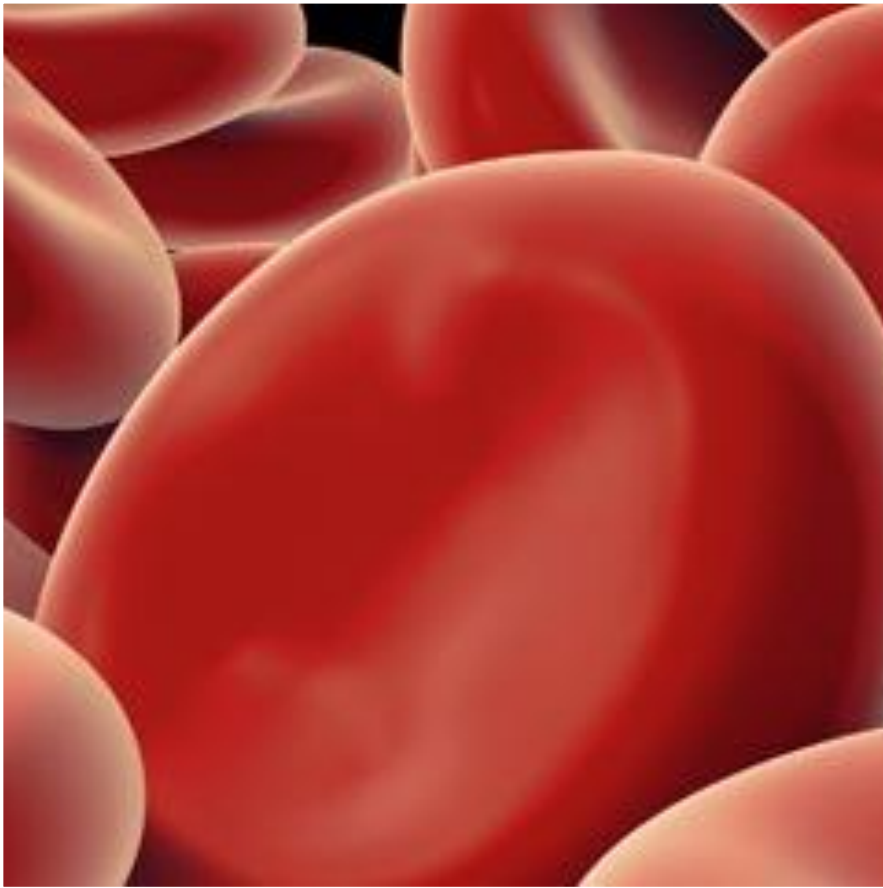




*PERSPIRATION*



*FEVER*



***BLOOD  
CELLS***

***Erythrocytes***



# Leukocytes

white blood cells ~ WBC

granular

granular

monocytes  
3 - 8%

basophils  
.5 - 1%

neutrophils  
60 - 70%



Cell

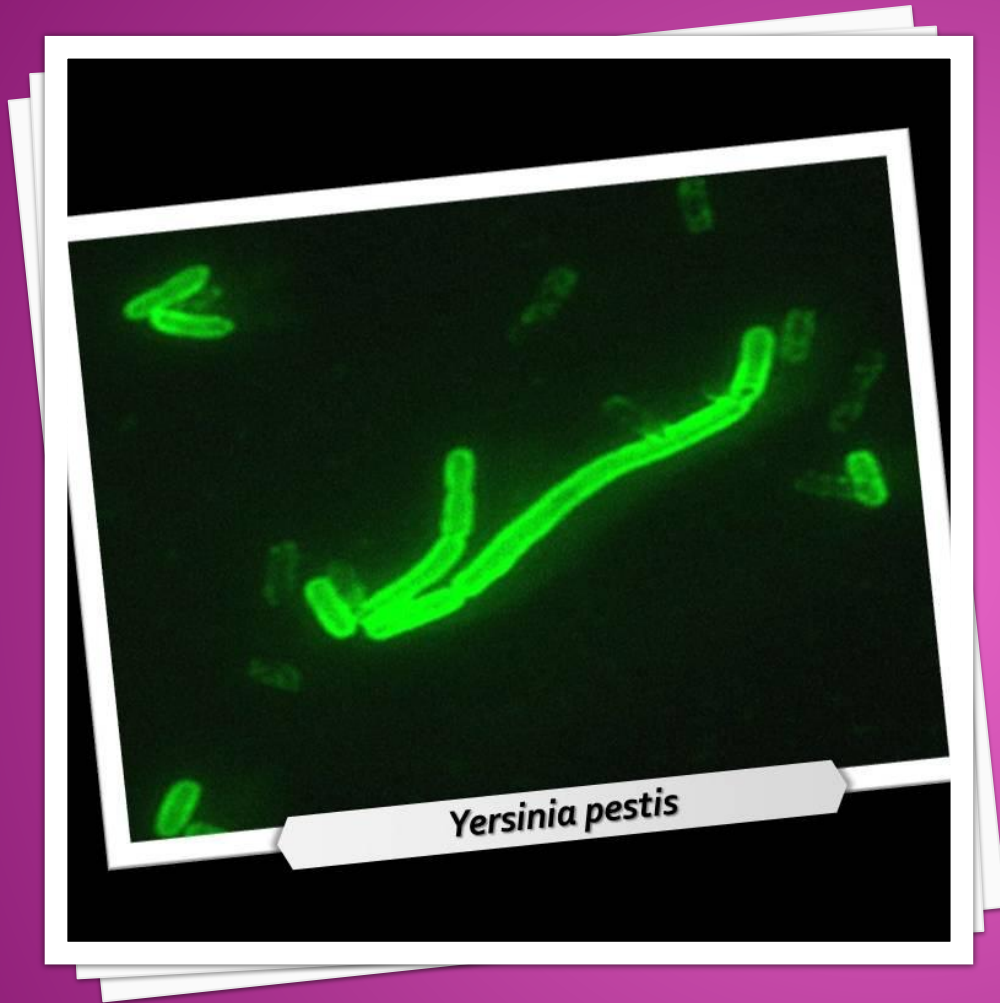
Sputum smear is prepared  
and examined under  
the microscope



 ADAM.

# *SPUTUM*

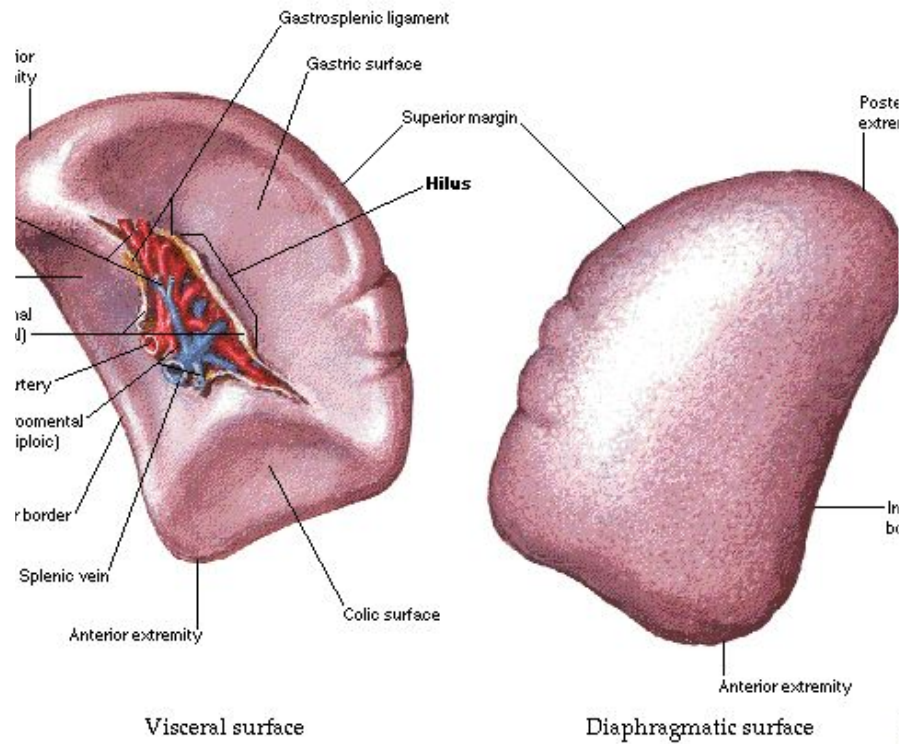
*CAUSATIVE  
AGENT*



*Yersinia pestis*

# Spleen

## Visceral and Diaphragmatic Surfaces



# *SPLEEN*





w.aif.ru

*TEMPERATURE*





*ALCOHOL*



# *INFLAMMATION*



*OCCLUSION*



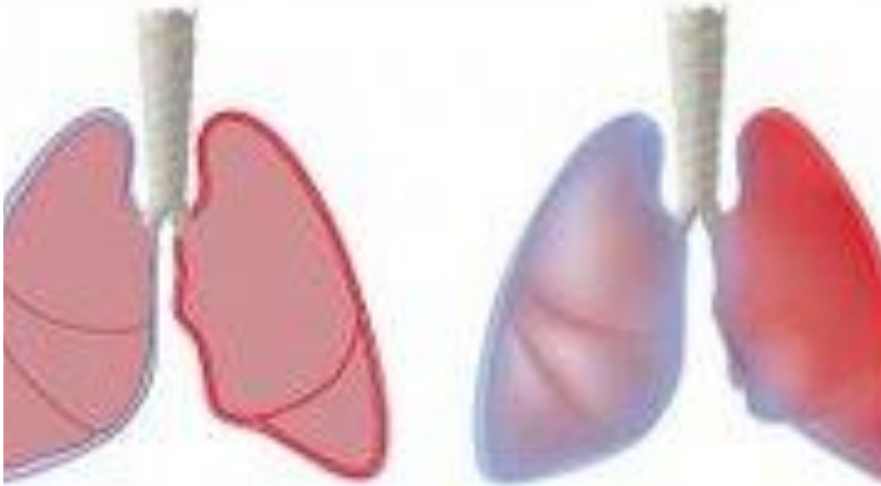
# *CYANOSIS*



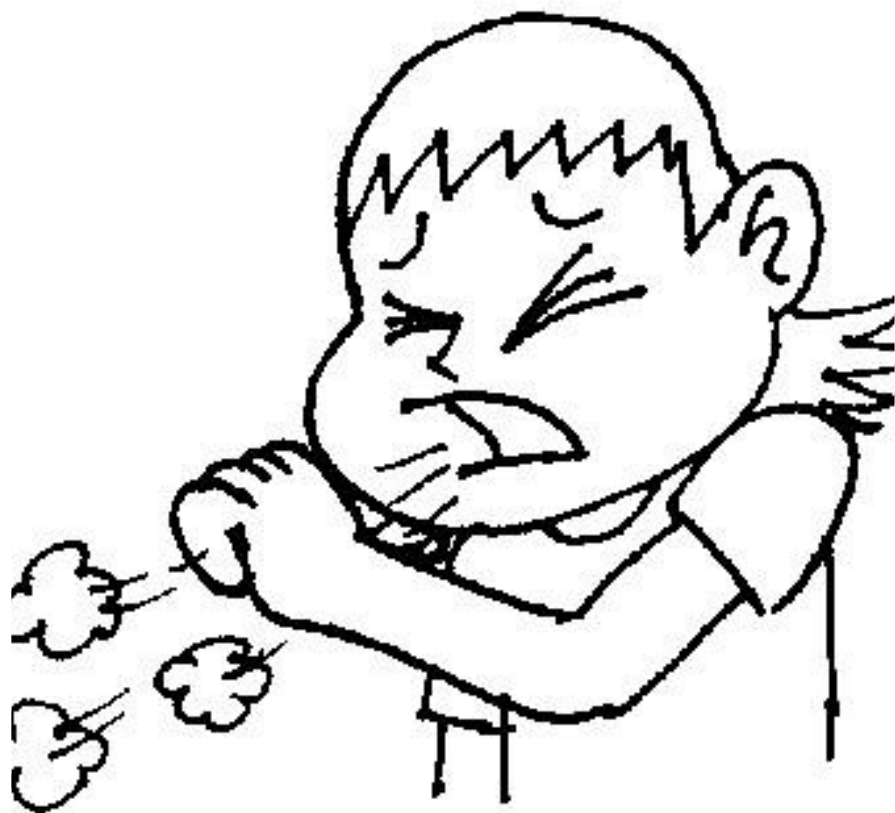
*CREPITATION*



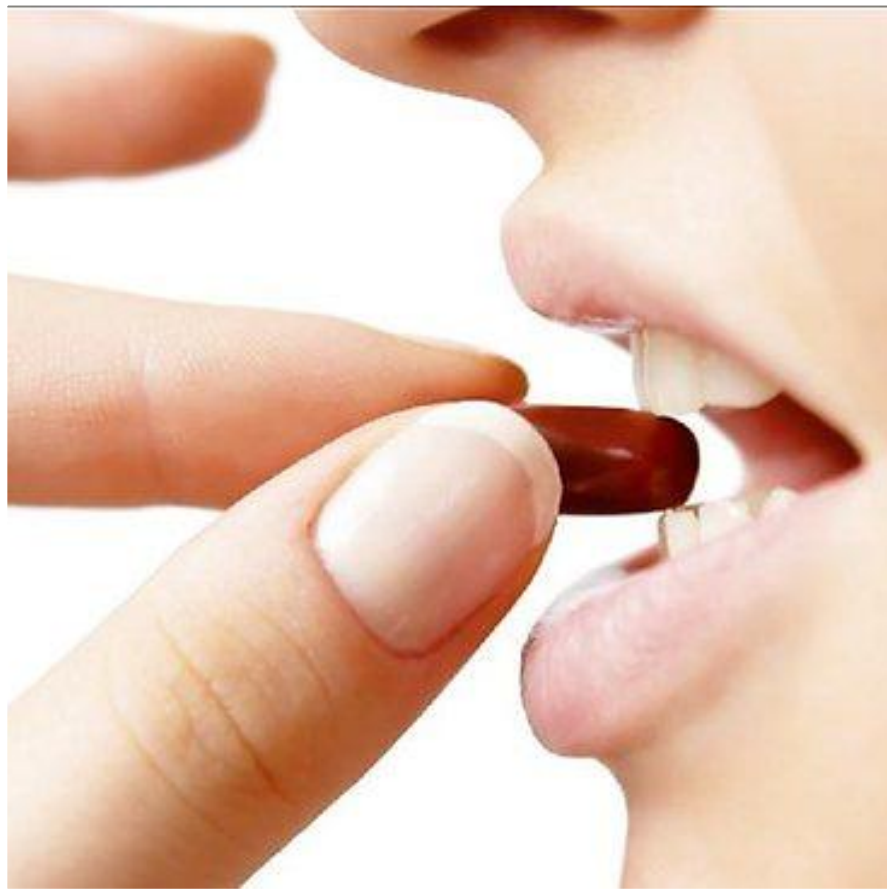
## Pleural Inflammation



*PLEURISY*



*COUGH*



*ORALLY*



*COUGH MIXTURE*



*WARM MILK*





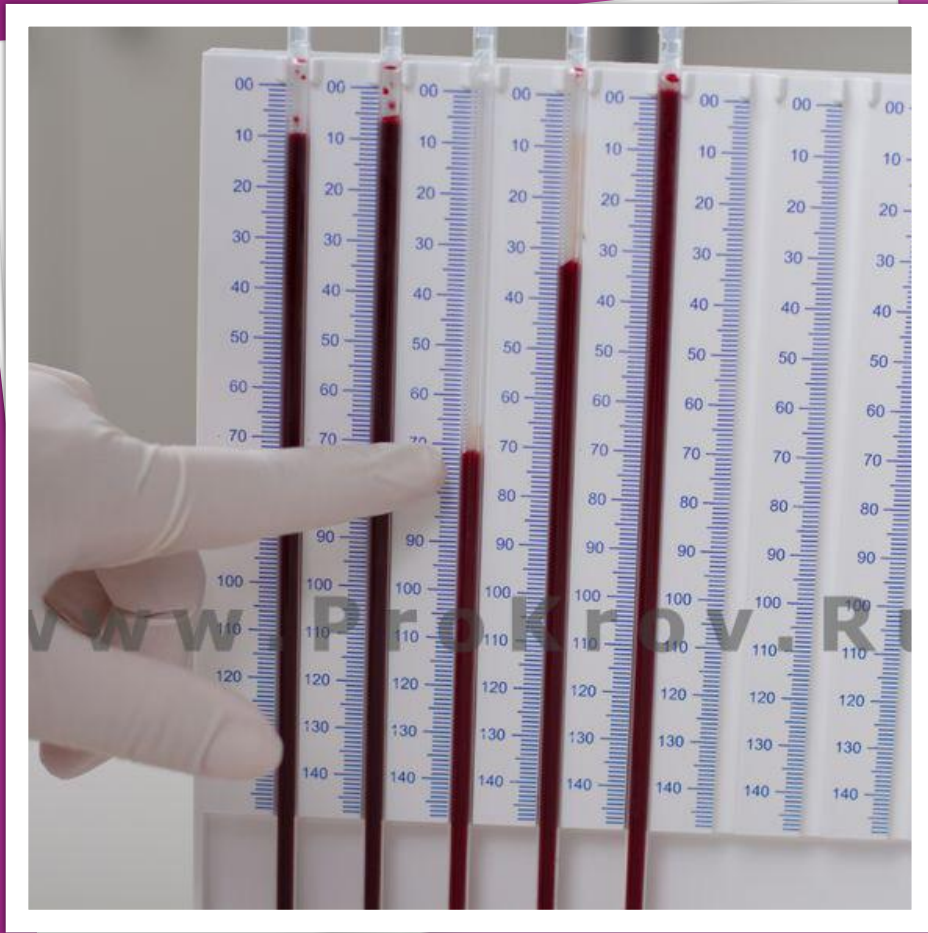
*APPLICATIONS  
ON THE CHEST*



*TABLETS OF  
TETRACYCLIN*



***BREATHLESSNESS***



# *ERYTHROCYTES SEDIMENTATION RATE*



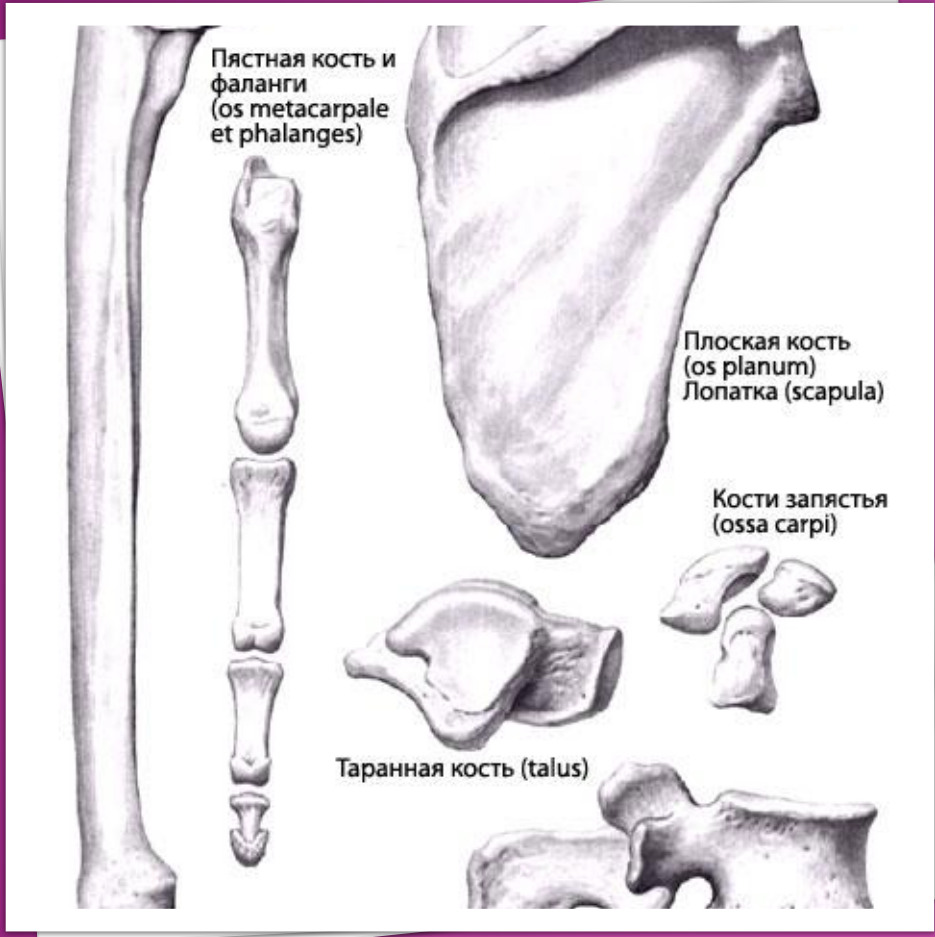
Воспаленный  
лимфоузел

Здоровый  
лимфоузел



# *LYMPHATIC GLAND*



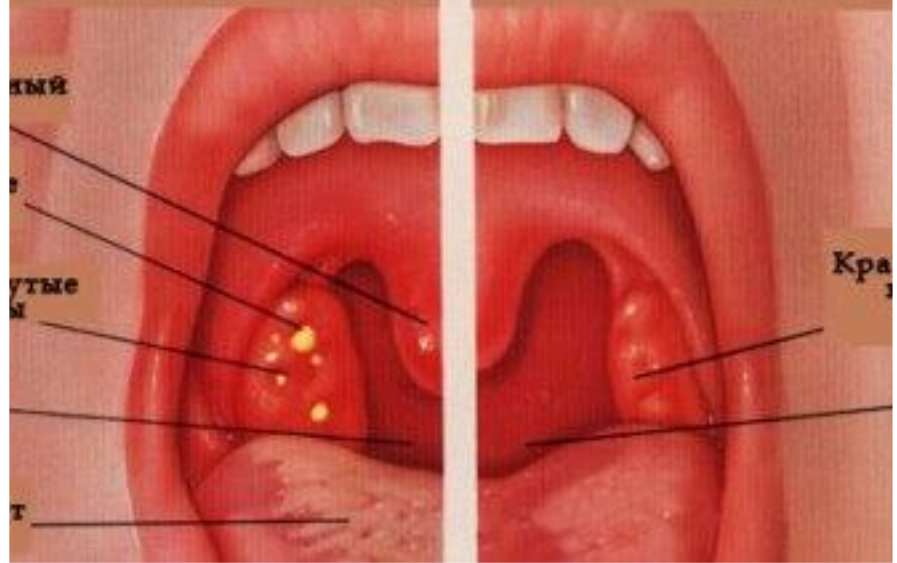


# *BONES*

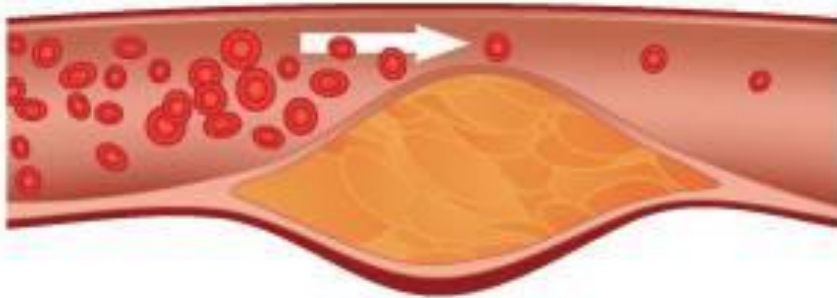
Бактериальная **АНГИНА** Вирусная

г обращения в  
больницу

Можно контролиро  
полоскать горло



# ANGINA



*ATHEROSCLEROSIS*



## *ELECTROCARDIOGRAM*



# Distal Biceps Tendon Rupture



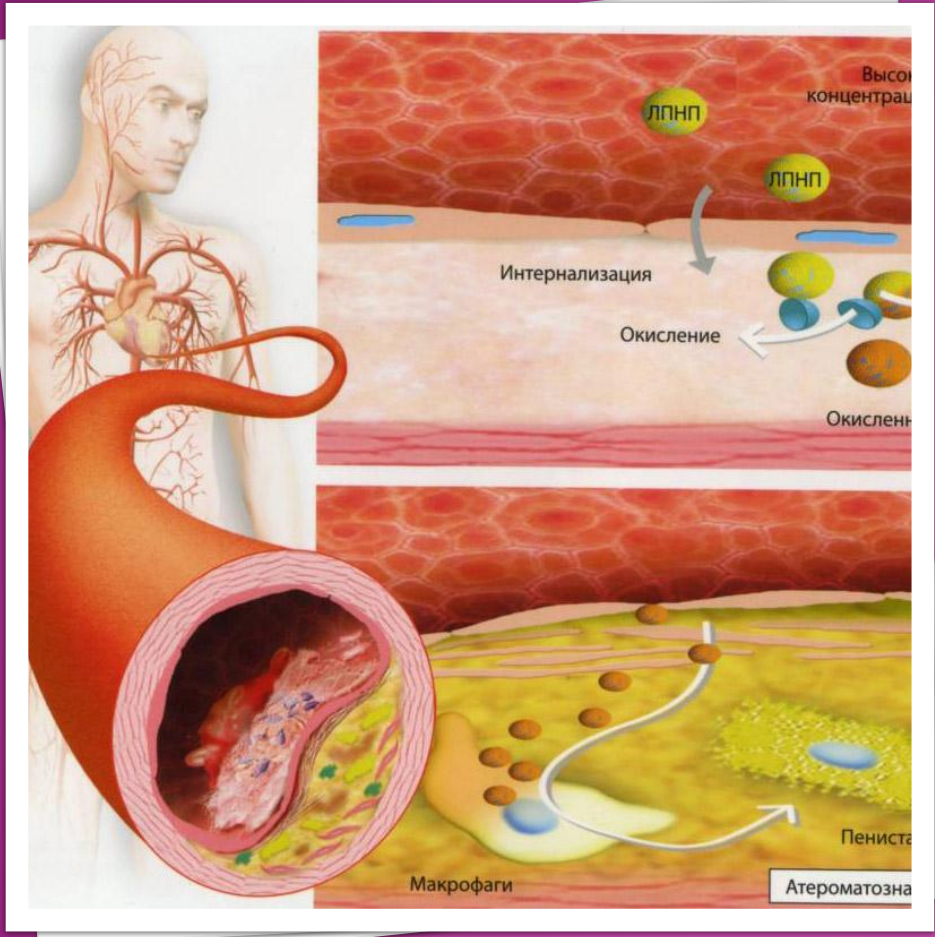
©MMG 2003

***RUPTURE***

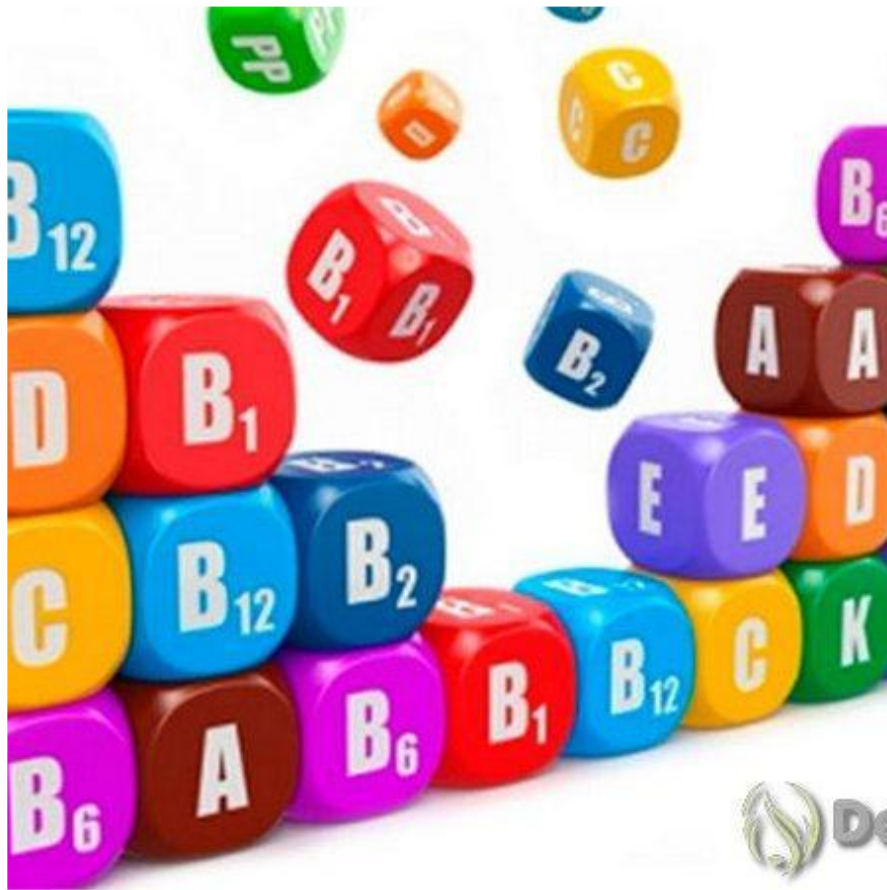




*OVERSTRAIN*



*METABOLIC  
PROCESSES*



# *VITAMINS*



*IMPROVE*





*PAIN*





*MEASURE OF  
BLOOD  
PRESSURE*

tisyachelistr



*SMOKE*



*BROMIDE*



**DILATE THE  
VESSELS**



*DANGER*





**HOSPITALIZE**



***BED REGIMEN***



***BANDAGE***

## Бронхиолы и альвеолы

Здесь они ветвятся на **бронхиолы** и заканчиваются лёгочными пузырьками (**альвеолами**). Бронхиолы и альвеолы образуют два лёгких. В лёгких насчитывается более 300 миллионов альвеол.



## OCCLUSION OF NUMEROUS BRONCHIOLES AND ALVEOLI



# ALIMENTARY TRACT





*HEALTH*



*WORLD HEALTH  
ORGANIZATION*