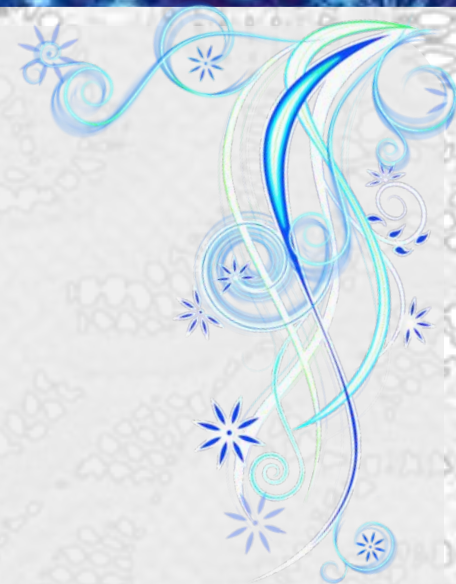
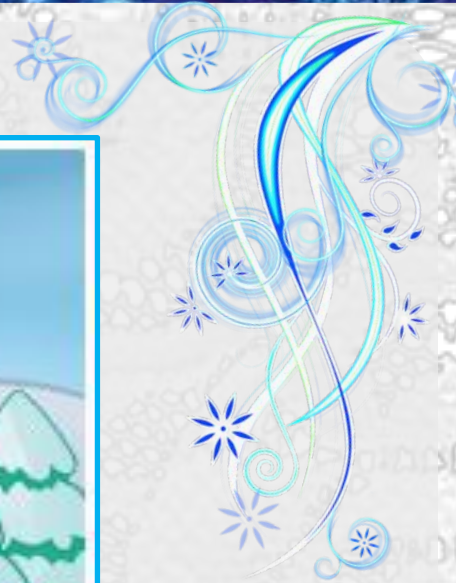
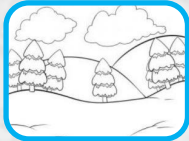
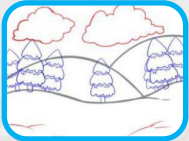
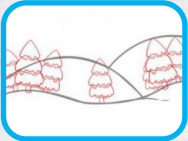
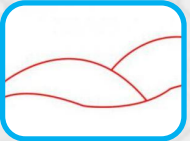


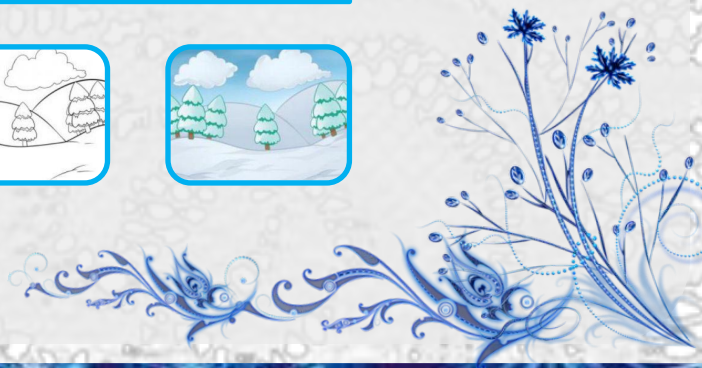
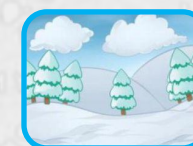
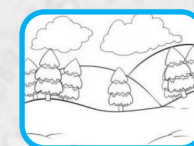
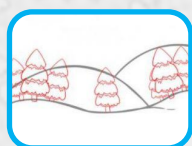
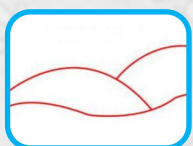
**Учимся
рисовать
зимний
пейзаж**





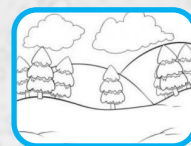
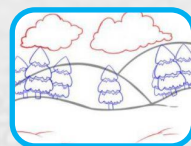
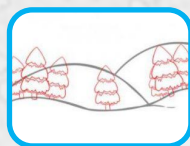
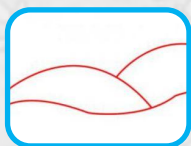


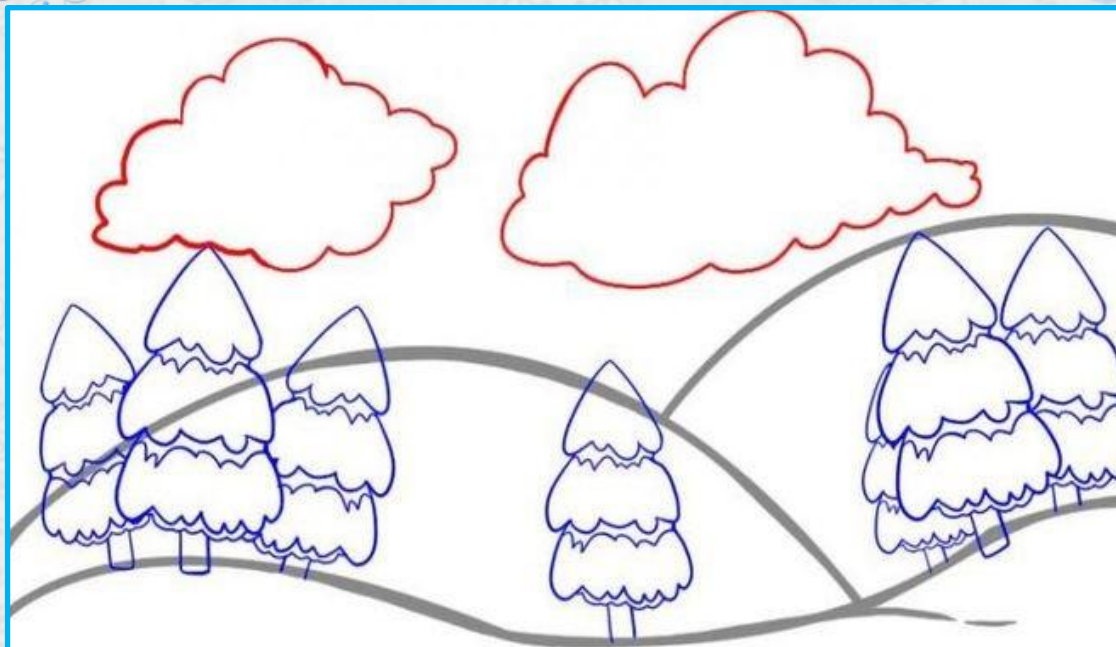
1. Начинаем рисовать наш рисунок с холмов, для этого проведём линии.



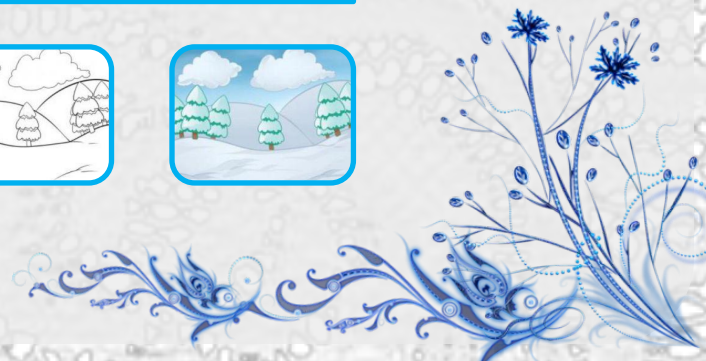
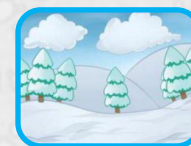
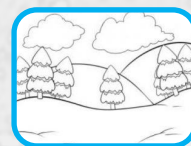
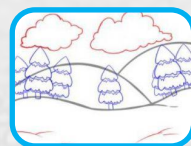
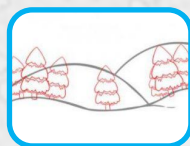
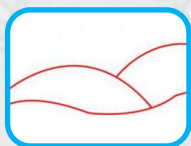


2. Нарисуем ёлочки.



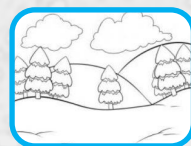
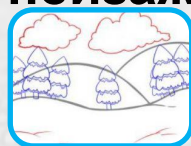
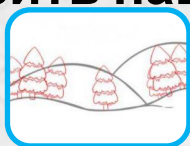
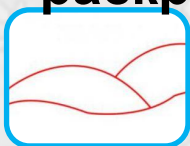


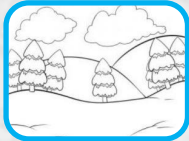
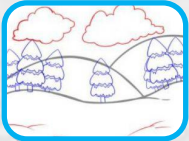
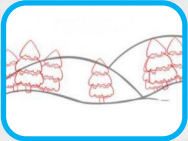
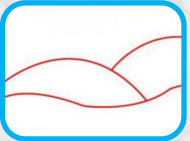
3. Затем облака. Добавим деталей снежной поверхности, чтобы придать пейзажу немного объёма.





4. Заготовка нашего рисунка зимы готова, теперь вам нужно взять цветные карандаши и полностью раскрасить наш пейзаж.





Спасибо за
работу!

