

МИНИСТЕРСТВО ОБРАЗОВАНИЯ И НАУКИ РОССИЙСКОЙ ФЕДЕРАЦИИ
ФЕДЕРАЛЬНОЕ ГОСУДАРСТВЕННОЕ БЮДЖЕТНОЕ
ОБРАЗОВАТЕЛЬНОЕ УЧРЕЖДЕНИЕ ВЫСШЕГО ОБРАЗОВАНИЯ
«БАШКИРСКИЙ ГОСУДАРСТВЕННЫЙ УНИВЕРСИТЕТ»

ФИЗИКО-ТЕХНИЧЕСКИЙ ИНСТИТУТ

КАФЕДРА ГЕОФИЗИКИ

Доклад

Fattakhov Elmir Razitovich

«Libya is one of the richest oil countries in Africa»

Выполнил:

Магистрант **1** года очной

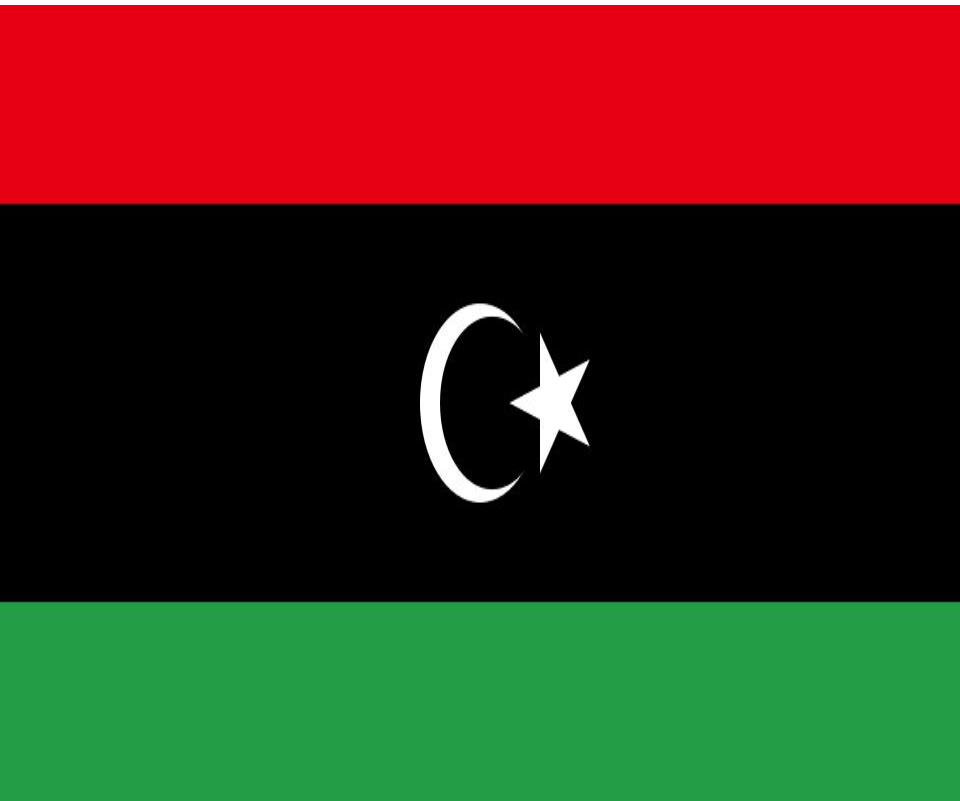
формы обучения

направление подготовки – «Геология»

Уфа-**2016**

Libya - the Arab state in North Africa, which has substantial oil and gas reserves.

As oil reserves the country is ranked first in Africa 29.5 billion barrels. Gas reserves - the fourth about 1.6 trillion cubic meters.



Tripoli - capital of Libya. The population of 1.78 million people. The city is located in the north-west of the country, on the Mediterranean coast. Tripoli is a major port, the largest commercial and industrial refining, cement, textile, food center of the country.



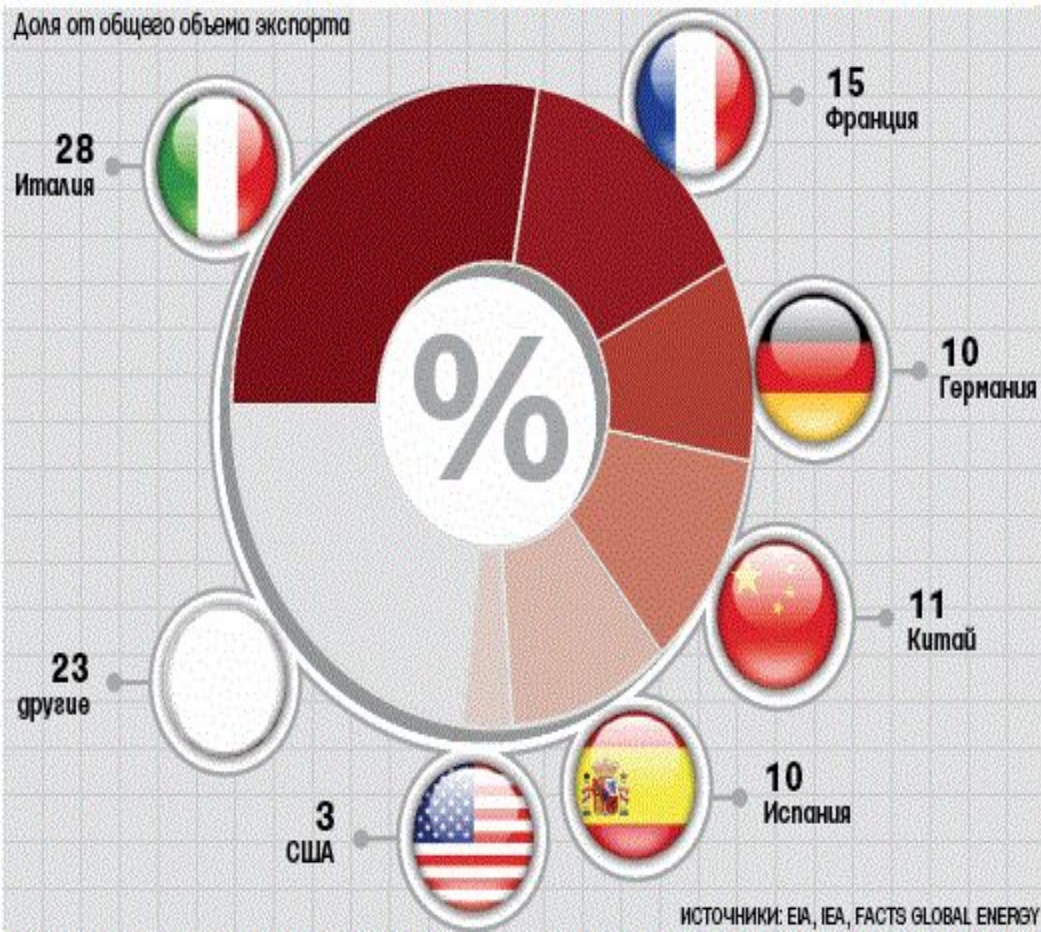
Oil and gas industry of the country controlled by the government. Until 2011, Libya was producing 1.6 million barrels. oil per day.



Export of oil Libya began in 1961. The oil component of these revenues up 95%. The country's oil buyers – China, Germany, France, Italy, United States, Spain.

ОСНОВНЫЕ СТРАНЫ - ПОКУПАТЕЛИ ЛИВИЙСКОЙ НЕФТИ

Доля от общего объема экспорта



The country has many of the largest oil and gas companies in the world, including **Italian's ENI, **Austria's OMV**, the **Spanish of Repsol**, **France's Total** and **Germany's Wintershall**. Of the Russian companies working in Libya, "**Gazprom**", "**Gazprom Neft**", "**Tatneft**", "**LUKOIL**".**



The oil fields of Libya

Abu-Attifel oil field in Libya. Opened in 1960. Initial recoverable oil reserves amount to 50 million tons. Oil content is associated with deposits of Eocene age . The operator of the field is the oil company Eni.



Buri oil field in Libya. Opened in 1977. Initial oil reserves amount to 90 million tons. Oil content is associated with deposits of Eocene age. Oil Storm is part of the Libyan export brand Es Sider.



Sarir is a giant oil field in Libya. Located in the municipality of El Wahat. Opened in 1961. Geological reserves estimated at 3.8 billion tons of oil. Oil Sarira is part of the Libyan export oil grade Es Sider.

Elephant oil field in Libya. Open in 1997. Initial recoverable oil reserves are estimated at 95 million tons. Oil content is associated with deposits of Eocene age. The operator of the field is the oil company Eni.



Thank You!

A decorative graphic element in the bottom-left corner of the slide. It consists of a light blue triangle with a black border, and a smaller black triangle with a white border, both pointing towards the bottom-left corner.