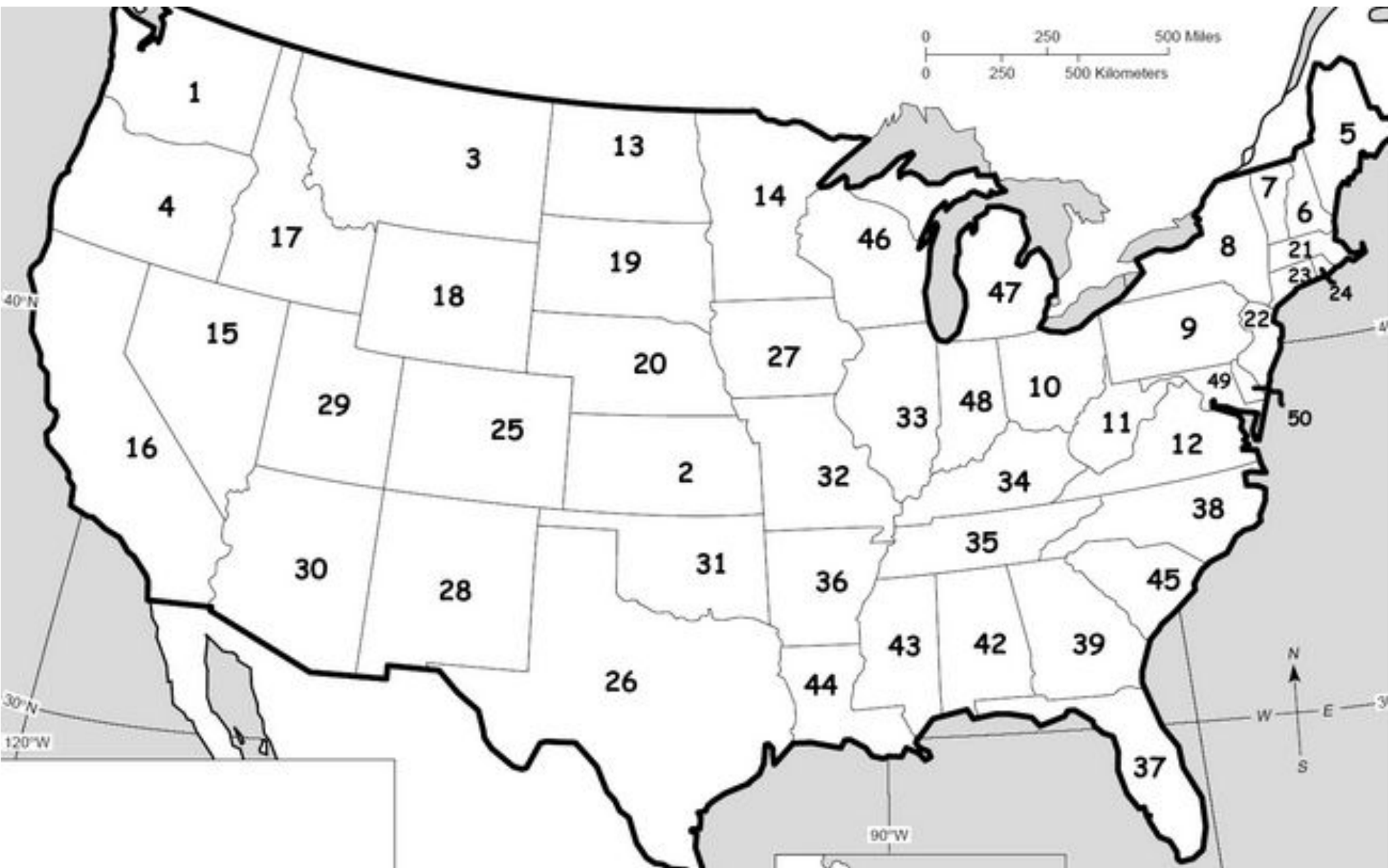


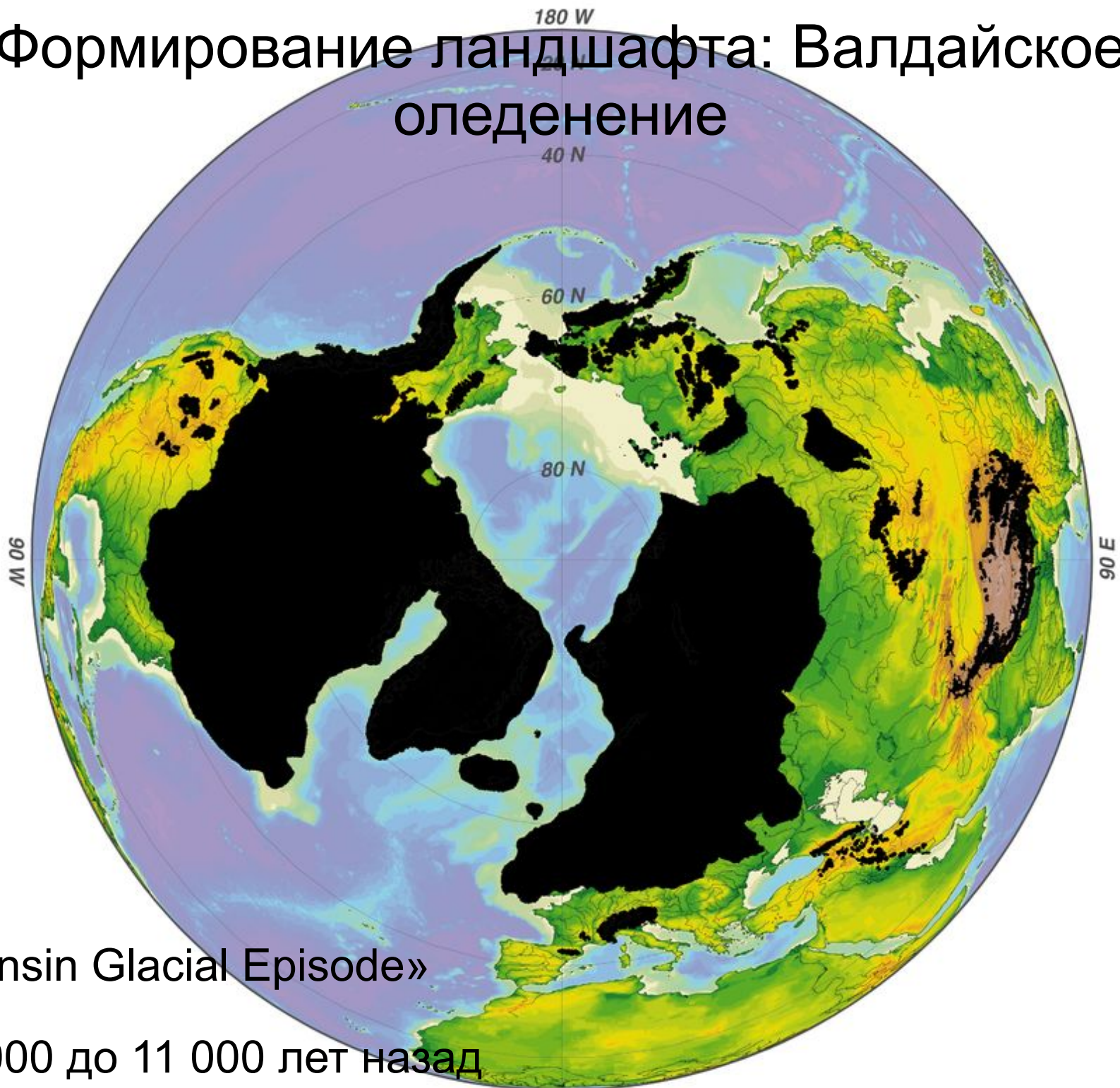
Введение в экологии Висконсина



Find Wisconsin



Формирование ландшафта: Валдайское оледенение



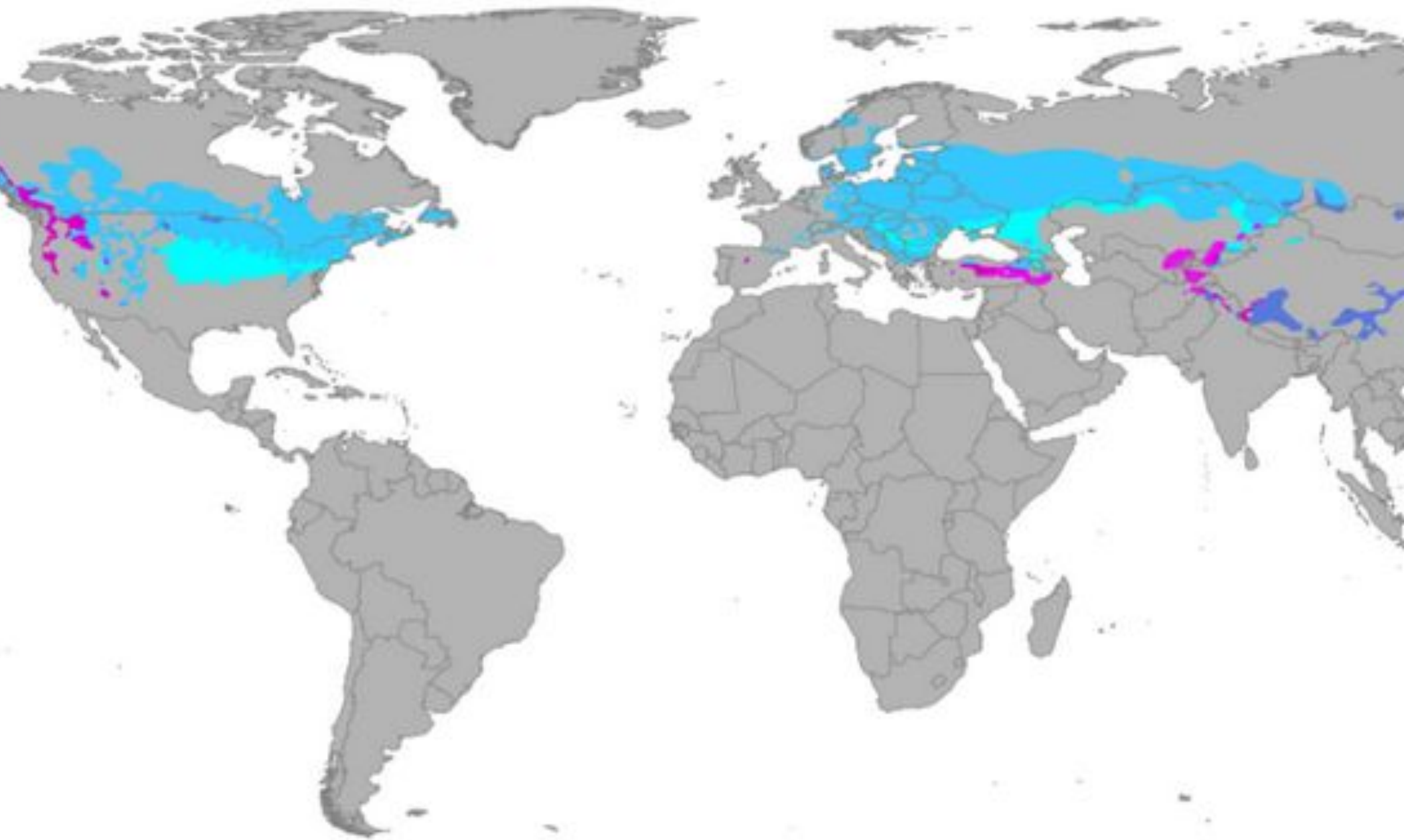
«Wisconsin Glacial Episode»

От 75 000 до 11 000 лет назад

Великие озёра



Гемиборальная Климата



Лес умеренной зоны



Плотность: 39,6
человека/ км²

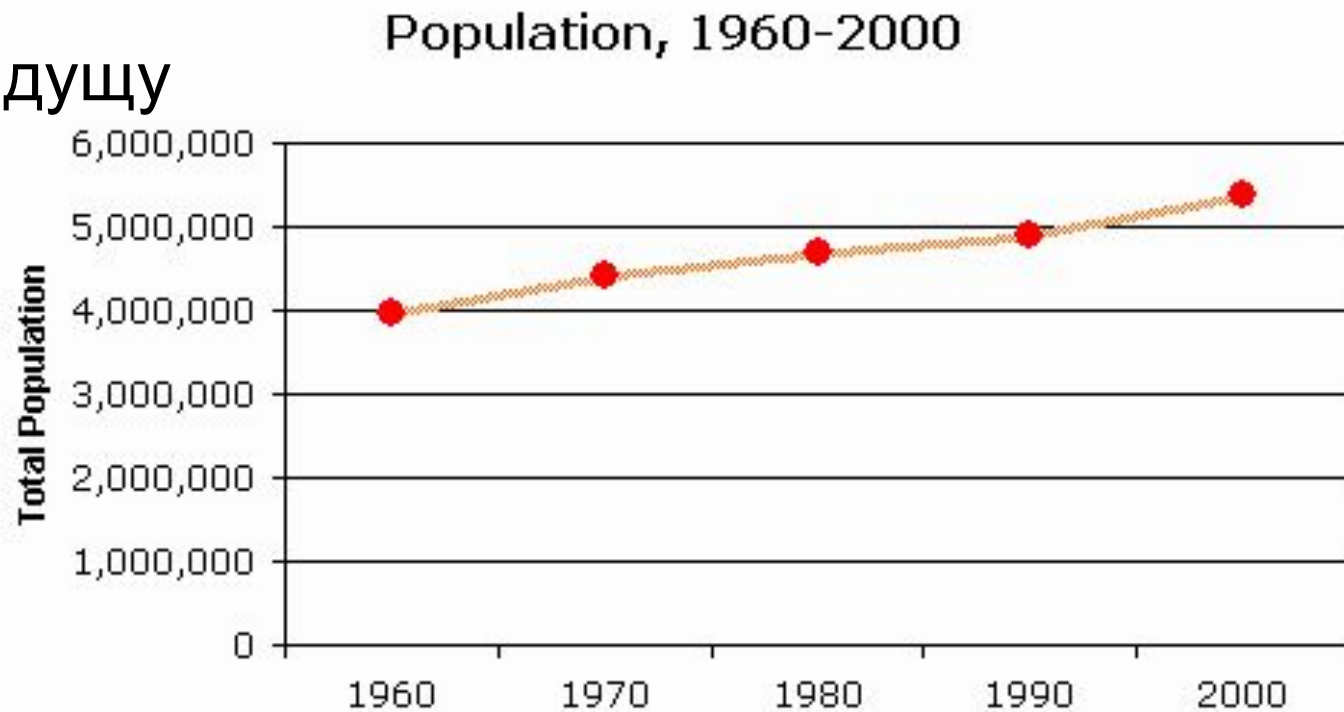
Уровень средней школы
92,4%

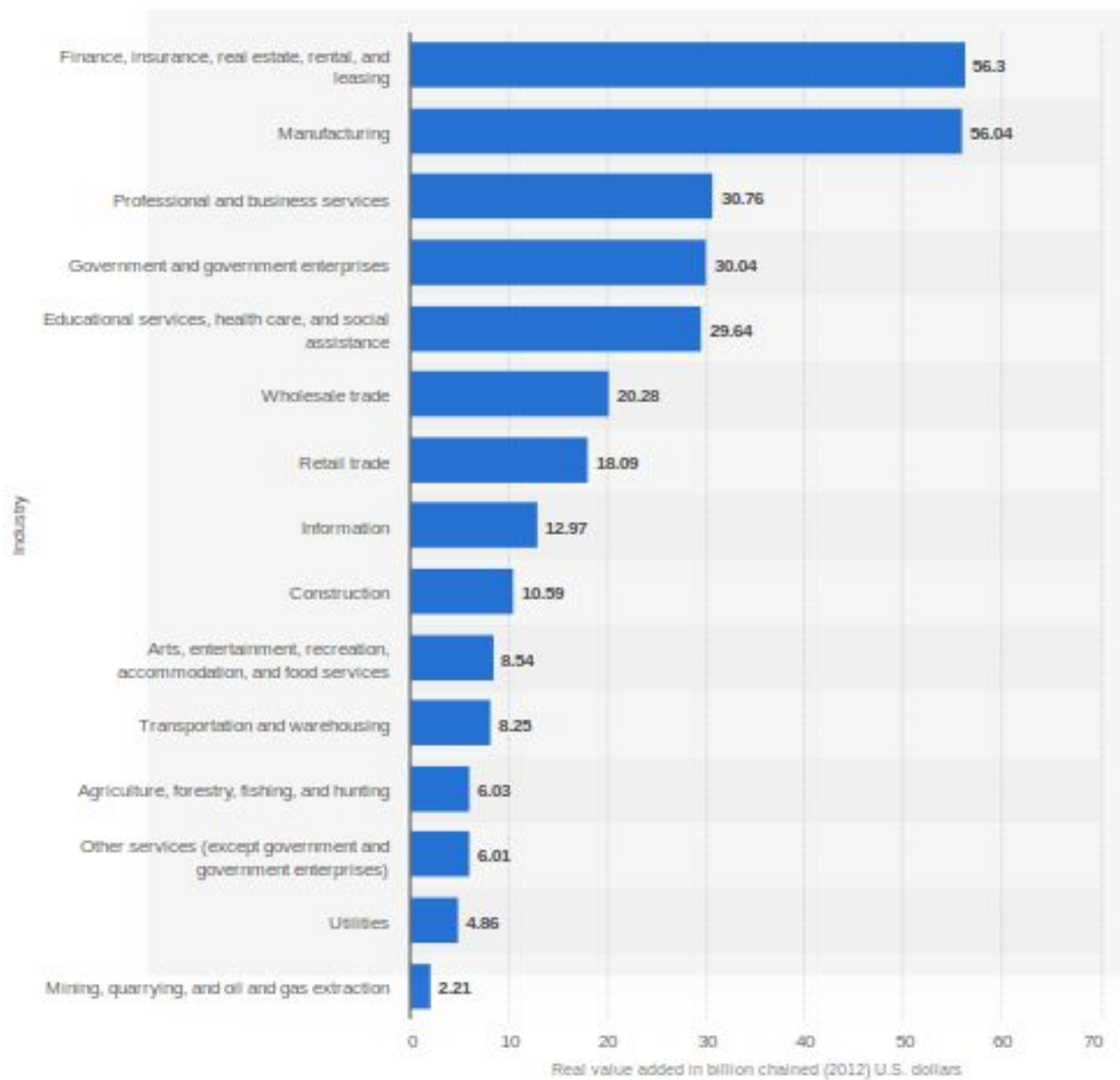
Высшее образование:
30,4%

ВВП на душу населения
\$47,266

Около 2 машин на душу
население

Социо- Экономические факторы

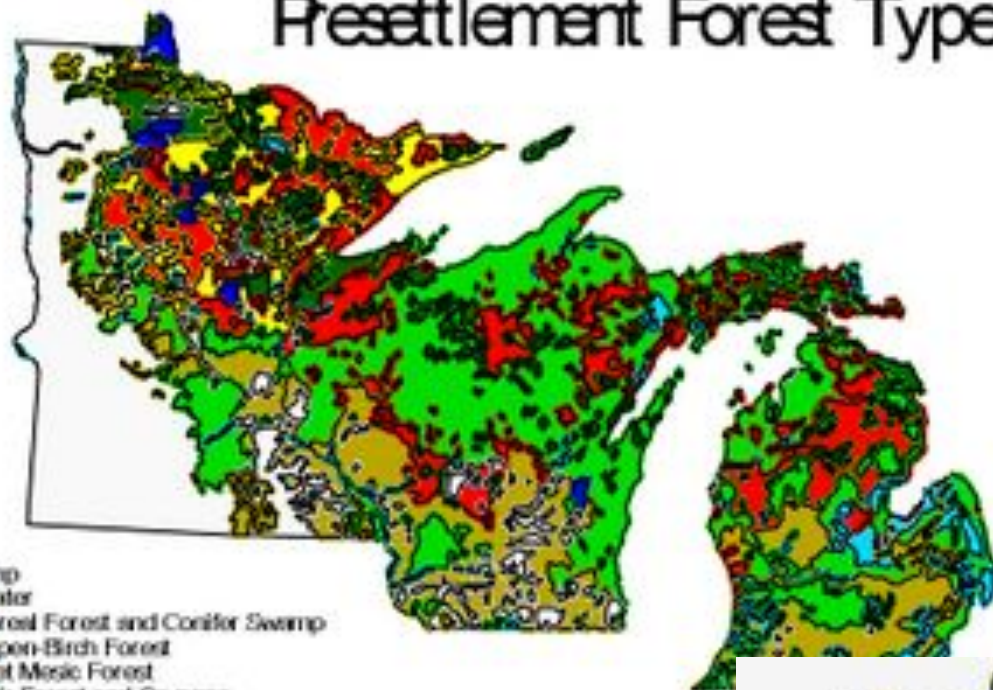






Лесозаготов- ление

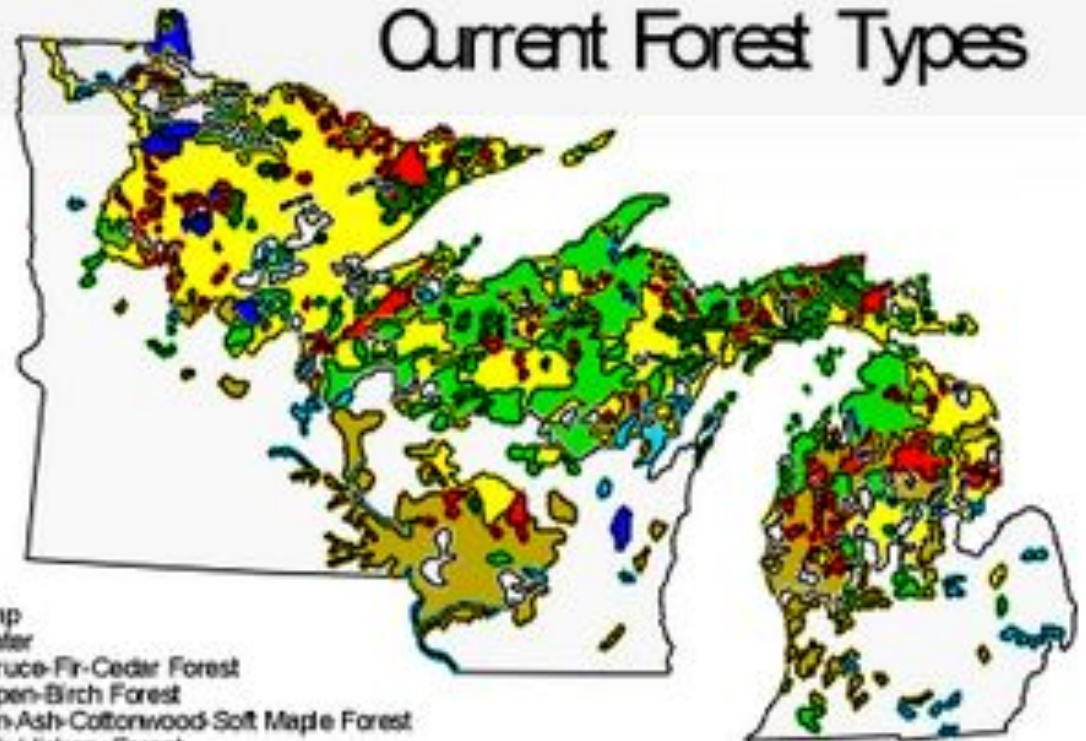
Presettlement Forest Types



- Okfor.shp
- Water
 - Boreal Forest and Conifer Swamp
 - Aspen-Birch Forest
 - Wet Mesic Forest
 - Oak Forest and Savanna
 - Northern Mesic Forest
 - Pine Forests and Barrens
 - Non-Forest

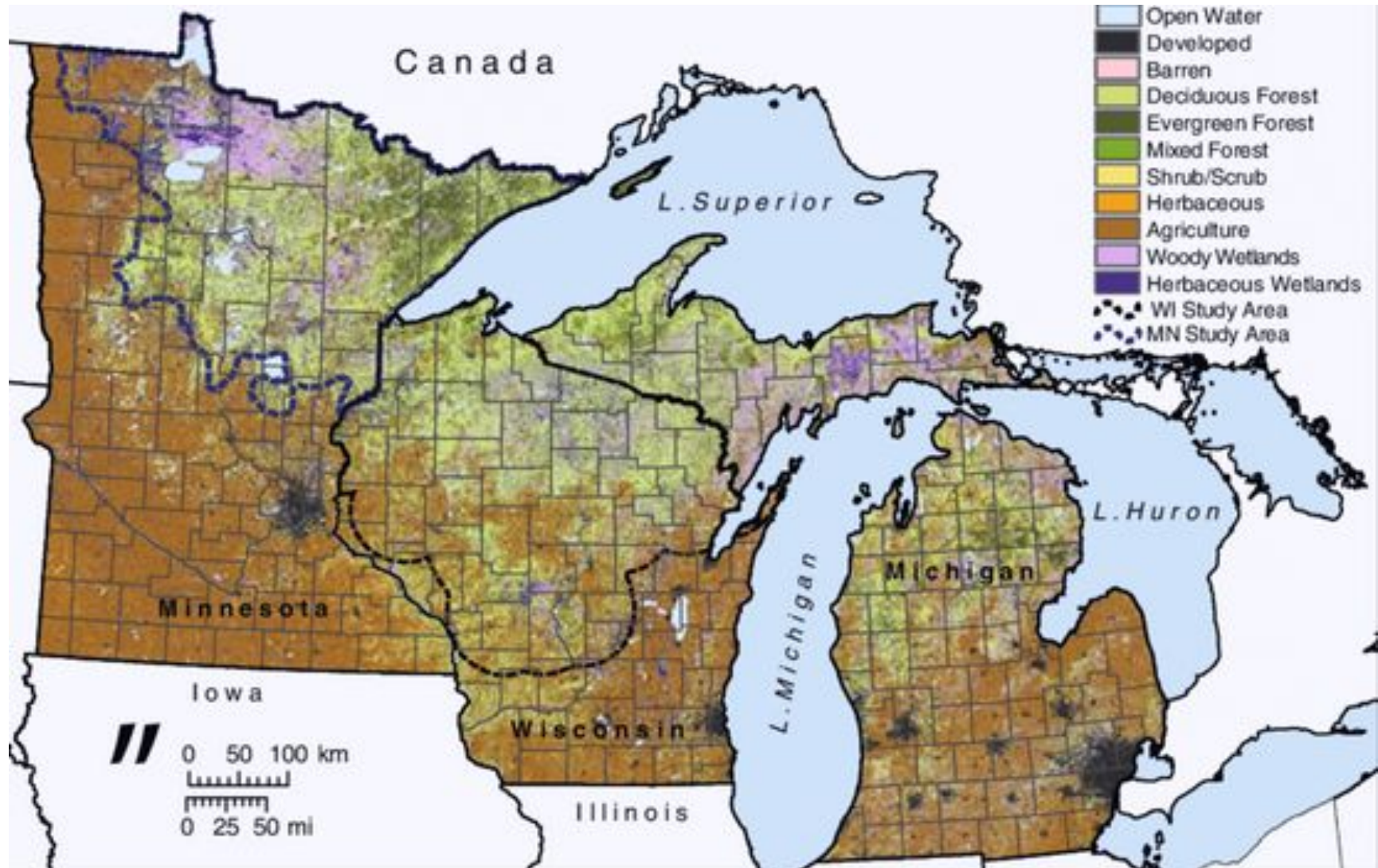
Лесозаготов- ление

Current Forest Types

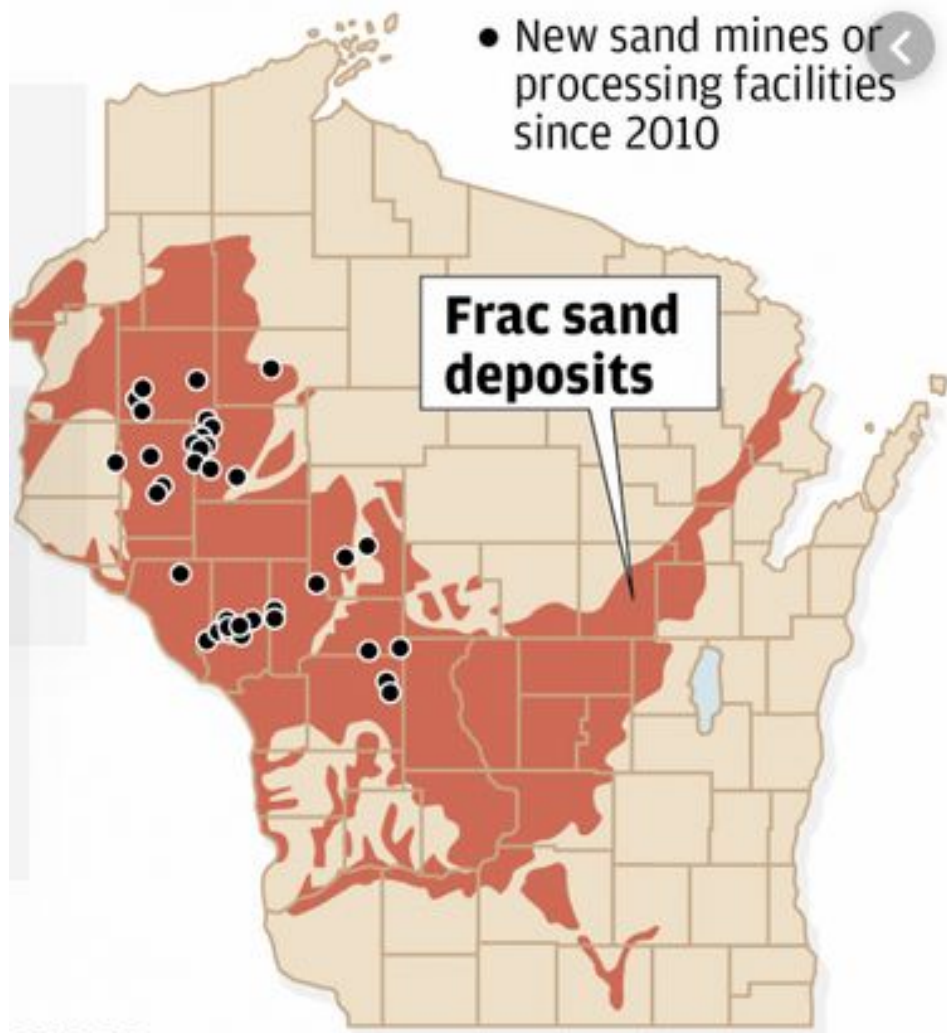


- Curfor.shp
- Water
 - Spruce-Fir-Cedar Forest
 - Aspen-Birch Forest
 - Elm-Ash-Cottonwood-Soft Maple Forest
 - Oak-Hickory Forest
 - Maple-Basswood-Birch Forest
 - Jack-Red-White Pine Forests
 - Non-Forest

Современное Землепользование



Добыча полезных ископаемых



SOURCE:
Wisconsin Geological &
Historical Survey

State Journal

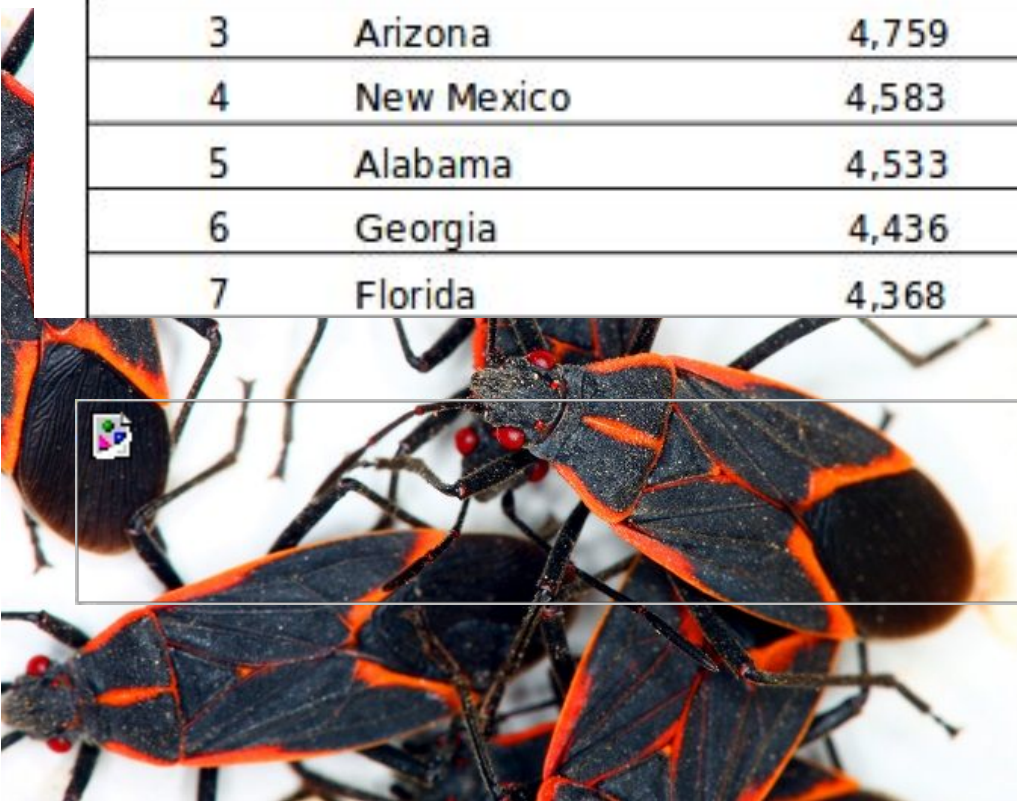


Биоразнообразие



Table A. Species Diversity by State

RANK	STATE	# OF SPECIES
1	California	6,717
2	Texas	6,273
3	Arizona	4,759
4	New Mexico	4,583
5	Alabama	4,533
6	Georgia	4,436
7	Florida	4,368



Вымирание видов

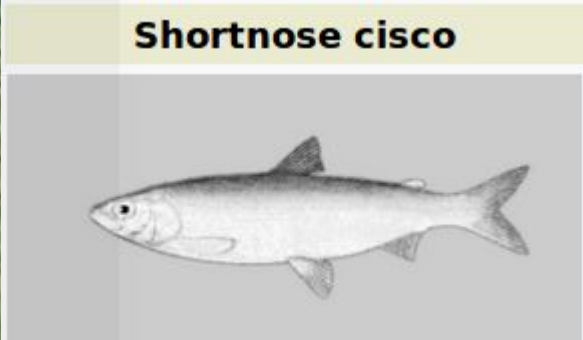
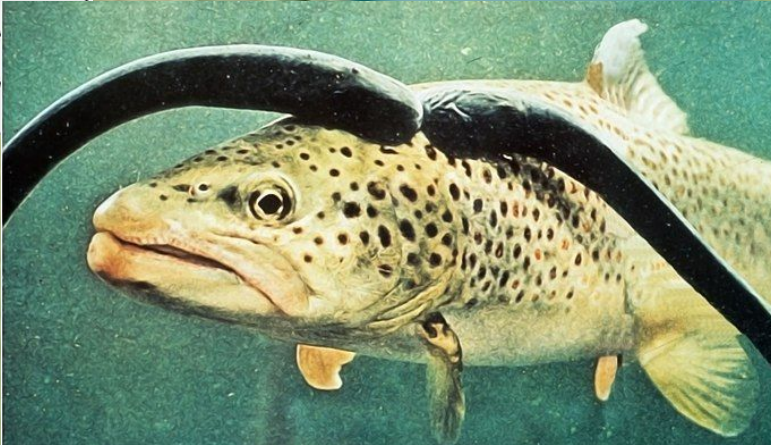


Table D. Extinctions by State

RANK	STATE	TOTAL EXTINCT	PRESUMED EXTINCT (GX)	POSSIBLY EXTINCT (GH)
1	Hawaii	217	27	190
2	Alabama	90	25	65
3	California	53	12	41
4	Texas	27	3	24
5	Georgia	26	4	22
6	Florida	23	5	18
7	Tennessee	22	13	9
40	Nebraska	3	2	1
40	North Dakota	3	1	2
40	Washington	3	0	3
40	Wisconsin	3	2	1



Подавление Степеного пожара

Jack Pine



Karner Blue Butterfly



Wild Lupine

15

Ключевые виды экосистем



Wolf Numbers in Minnesota, Wisconsin and Michigan (excluding Isle Royale) - 1976 to 2015

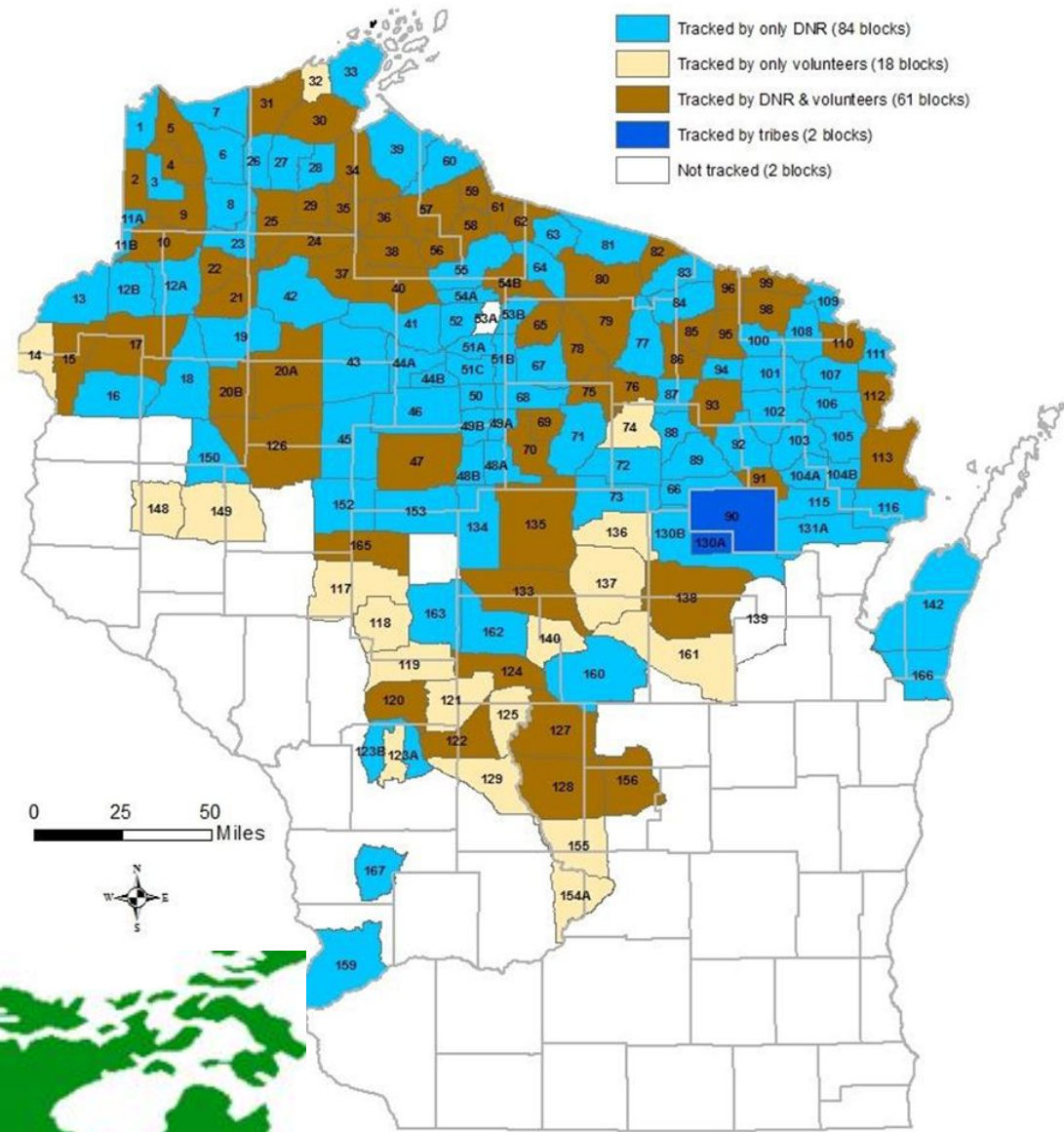
*The counts are conducted during mid- to late winter to present the annual minimum population size..

Североамериканский серый волк (Timber Wolf)

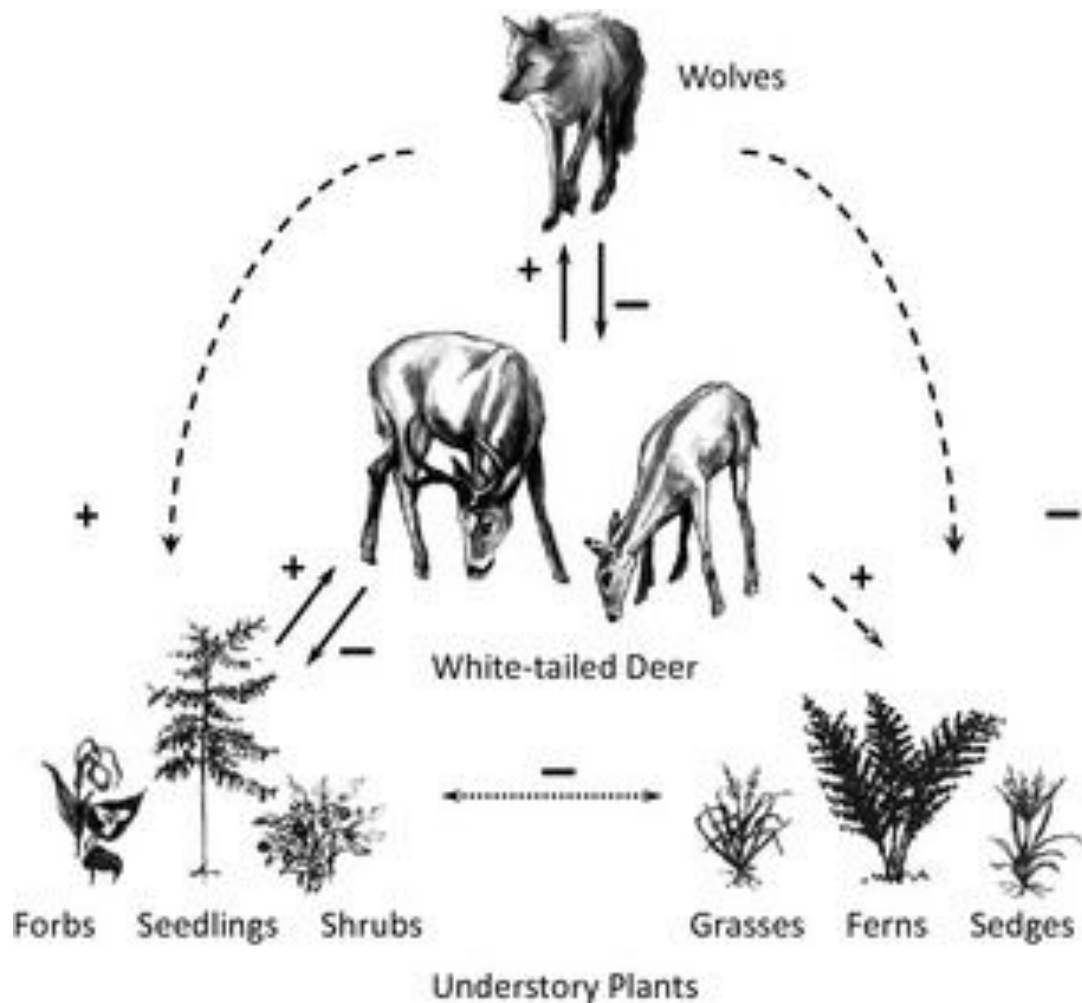
Year of Survey*	Minnesota	Wisconsin	Michigan
2017-2018	2,655	905	662
2016-2017	2,856	925	
2015-2016	2,278	866	618
2014-2015	2,221	746	(no survey)
2013-2014	2,423	660	636
2012-2013	2,211	809	658
2011-2012		815	687
2010-2011		782	687
1985-1986		16	-
1984-1985		15	-
1983-1984		17	-
1982-1983		19	-
1981-1982		27	-
1980-1981		21	-
1979-1980		25	-
1978 -1979	1,235	-	-
1975-1976	1,000 - 1,200	-	-



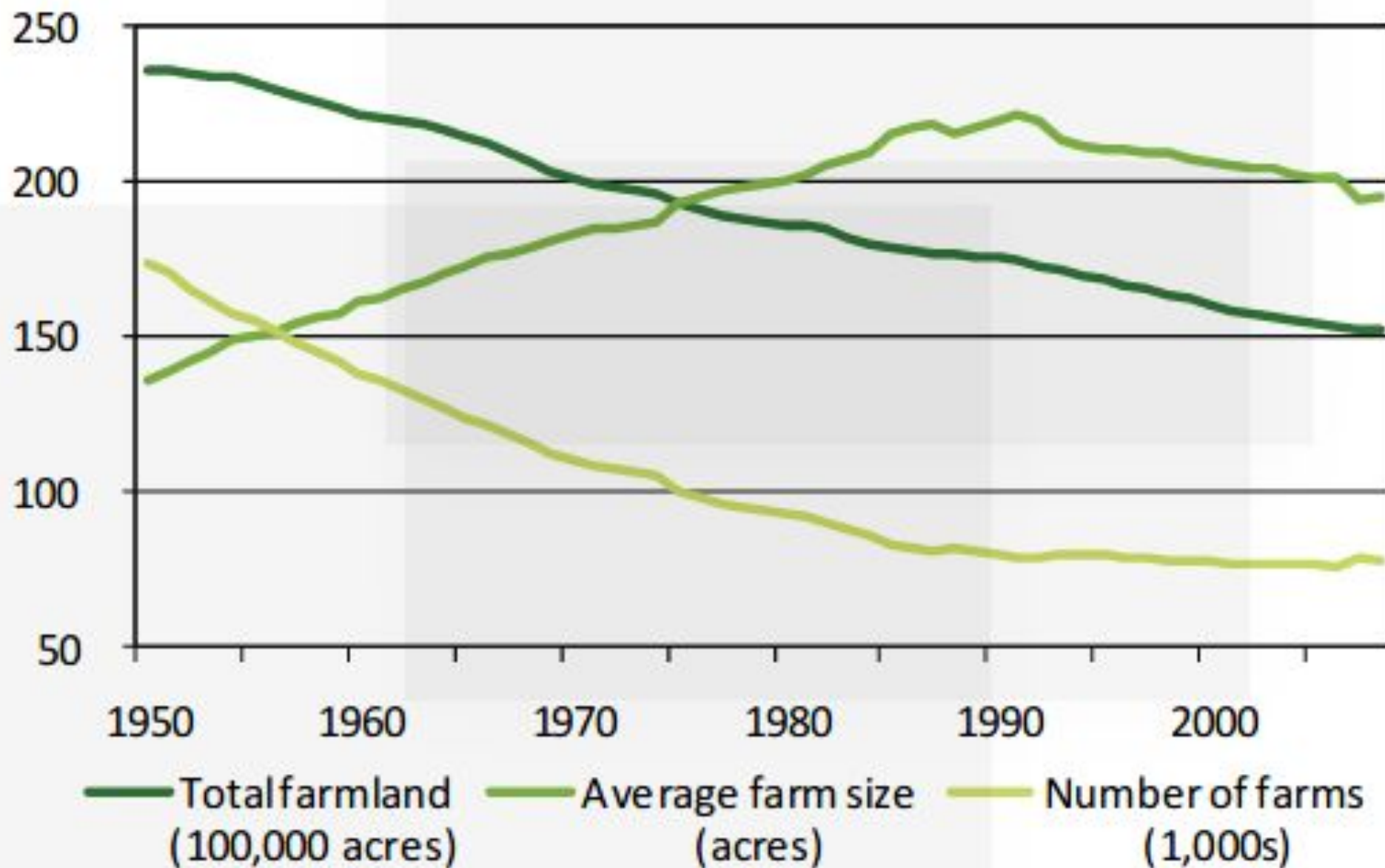
Расширение территории волка



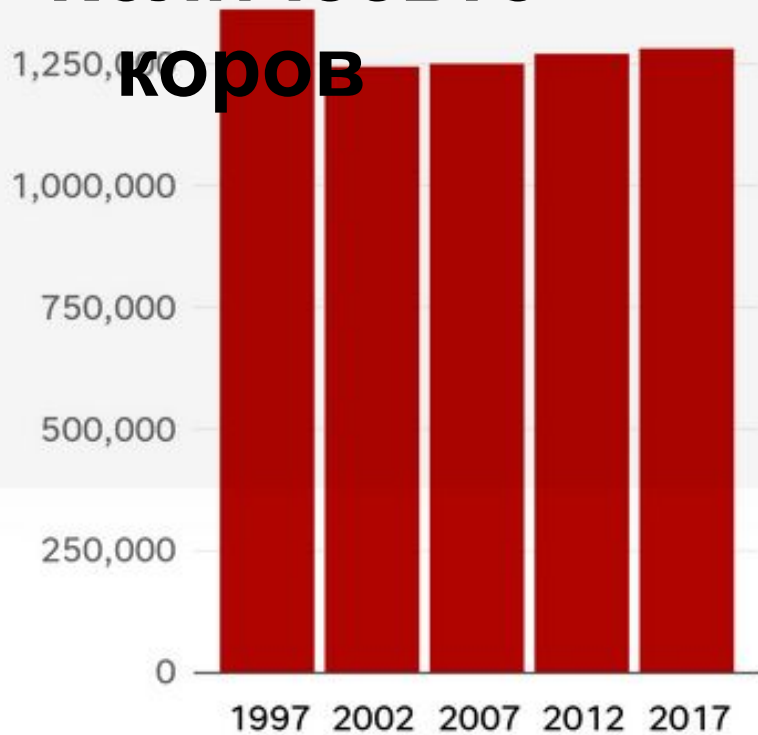
Белохвостый олень (White Tailed Deer)



Развитие сельского хозяйства



Количество коров

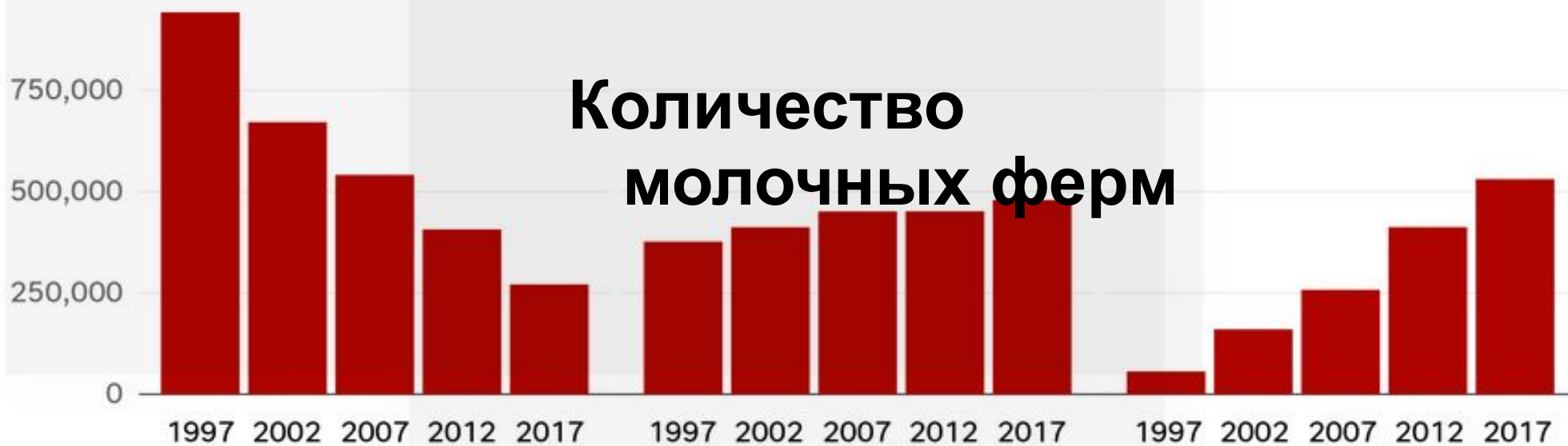


Number of cows on...

Small farms
1-99 cows

Midsized farms
100-499 cows

Large farms
500+ cows



Количество молочных ферм

Несколько выводов...