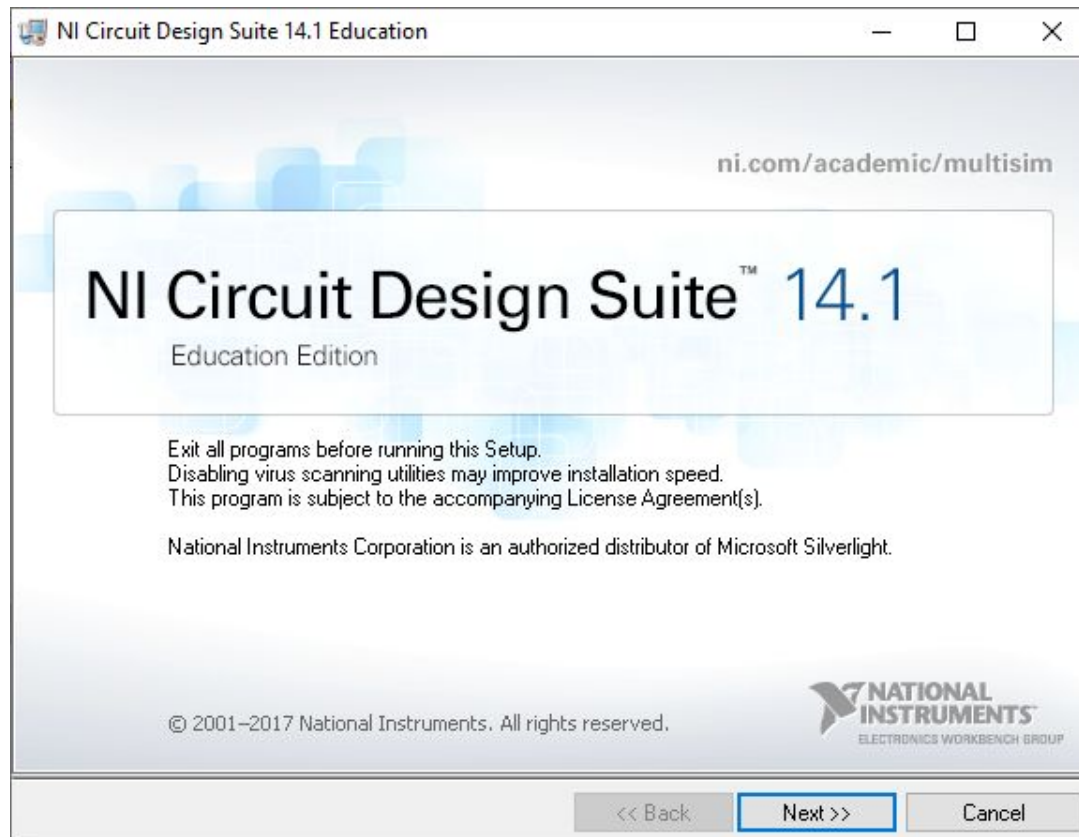



Установка Multisim



NI Circuit Design Suite 14.1 Education

User Information
Enter the following information.



Full Name:

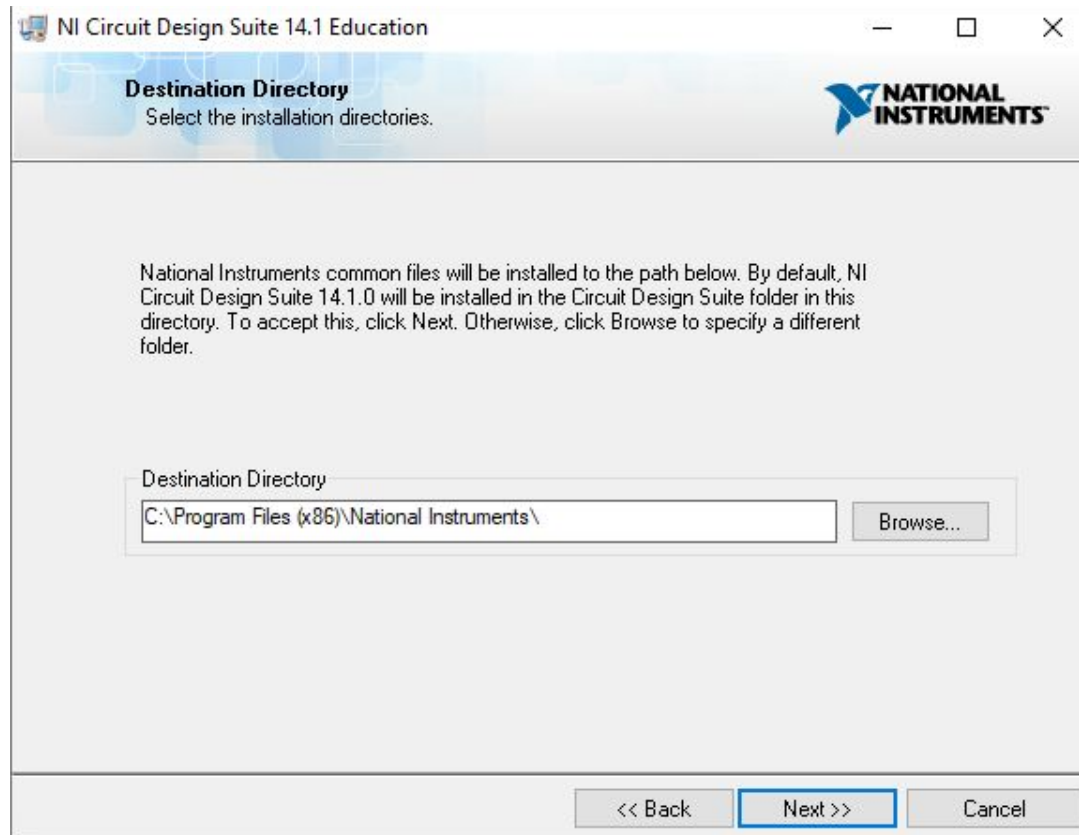
Organization:

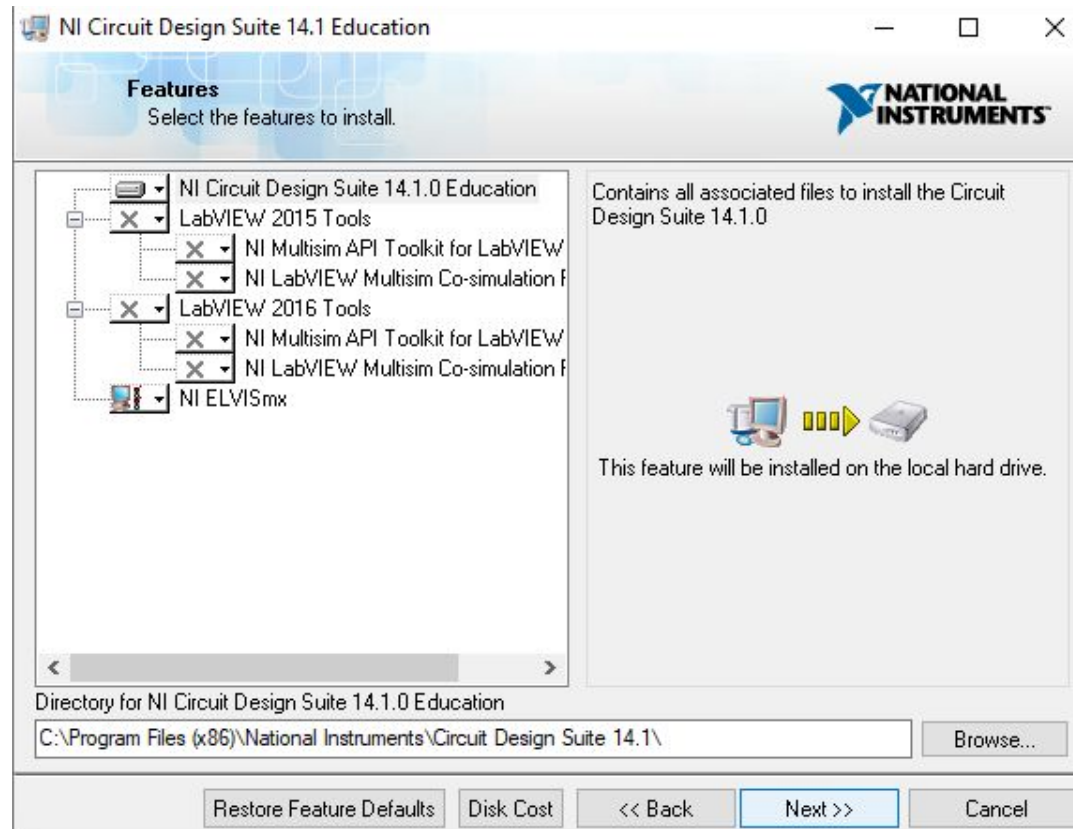
Install this product using the following serial number

Serial Number:

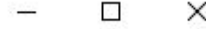
Install this product for evaluation

<< Back Next >> Cancel





NI Circuit Design Suite 14.1 Education



Product Notifications

Please read the following information about the configuration you have selected.



- Search for important messages and updates on the National Instruments products you are installing. To perform this search, your IP address will be collected in accordance with the National Instruments Privacy Policy.

Note: You will be given the opportunity to select the updates you want to install.

[Privacy Policy](#)

<< Back

Next >>

Cancel

License Agreement

You must accept the licenses displayed below to proceed.



NI

Microchip

NATIONAL INSTRUMENTS SOFTWARE LICENSE AGREEMENT

CAREFULLY READ THIS SOFTWARE LICENSE AGREEMENT ("AGREEMENT"). BY DOWNLOADING THE SOFTWARE AND/OR CLICKING THE APPLICABLE BUTTON TO COMPLETE THE INSTALLATION PROCESS, YOU AGREE TO BE BOUND BY THE TERMS OF THIS AGREEMENT. IF YOU DO NOT WISH TO BECOME A PARTY TO THIS AGREEMENT AND BE BOUND BY ITS TERMS AND CONDITIONS, DO NOT INSTALL OR USE THE SOFTWARE, AND RETURN THE SOFTWARE (WITH ALL ACCOMPANYING WRITTEN MATERIALS AND THEIR CONTAINERS) WITHIN THIRTY (30) DAYS OF RECEIPT. ALL RETURNS TO NI WILL BE SUBJECT TO NI'S THEN-CURRENT RETURN POLICY. IF YOU ARE ACCEPTING THESE TERMS ON BEHALF OF AN ENTITY, YOU AGREE THAT YOU HAVE AUTHORITY TO BIND THE ENTITY TO THESE TERMS

The software to which this National Instruments license applies is NI Circuit Design Suite 14.1 Education.

- I accept the above 2 License Agreement(s).
- I do not accept all these License Agreements.

<< Back

Next >>

Cancel

Disable Windows Fast Startup

Disable Windows fast startup to prevent problems with installing or removing hardware.



The fast startup capability introduced in Microsoft Windows 8 may cause problems with installing or removing hardware. National Instruments recommends disabling Windows fast startup. For more information about fast startup, click the following link or visit ni.com/info and enter the Info Code WinFastStartup.

[Windows Fast Startup Information](#)

Disable Windows fast startup to prevent problems with installing or removing hardware.

<< Back

Next >>

Cancel

