

Please look at the pictures and make up and write down sentences with **this is/these are** and new vocabulary from Everyday Objects

e.g.:

**This is** a pen.

**These are** doors.



Canon

SX510 HS

CANON ZOOM LENS 30X IS

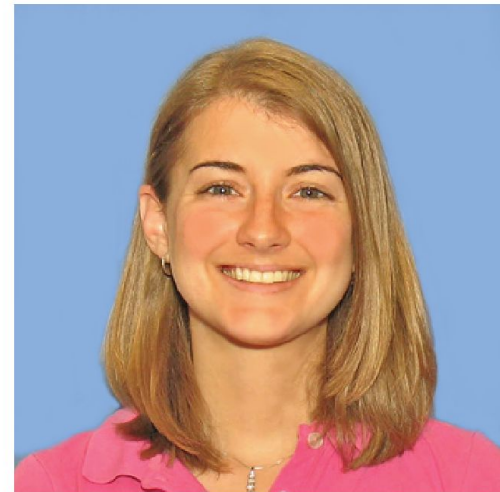
4.3-129.0mm 1:3.4-5.8



**UIC** UNIVERSITY OF ILLINOIS  
AT CHICAGO

**KAREN  
RUFF**

**ID Center Coordinator  
ID Center**



**Official Department ID**





CREDIT CARD

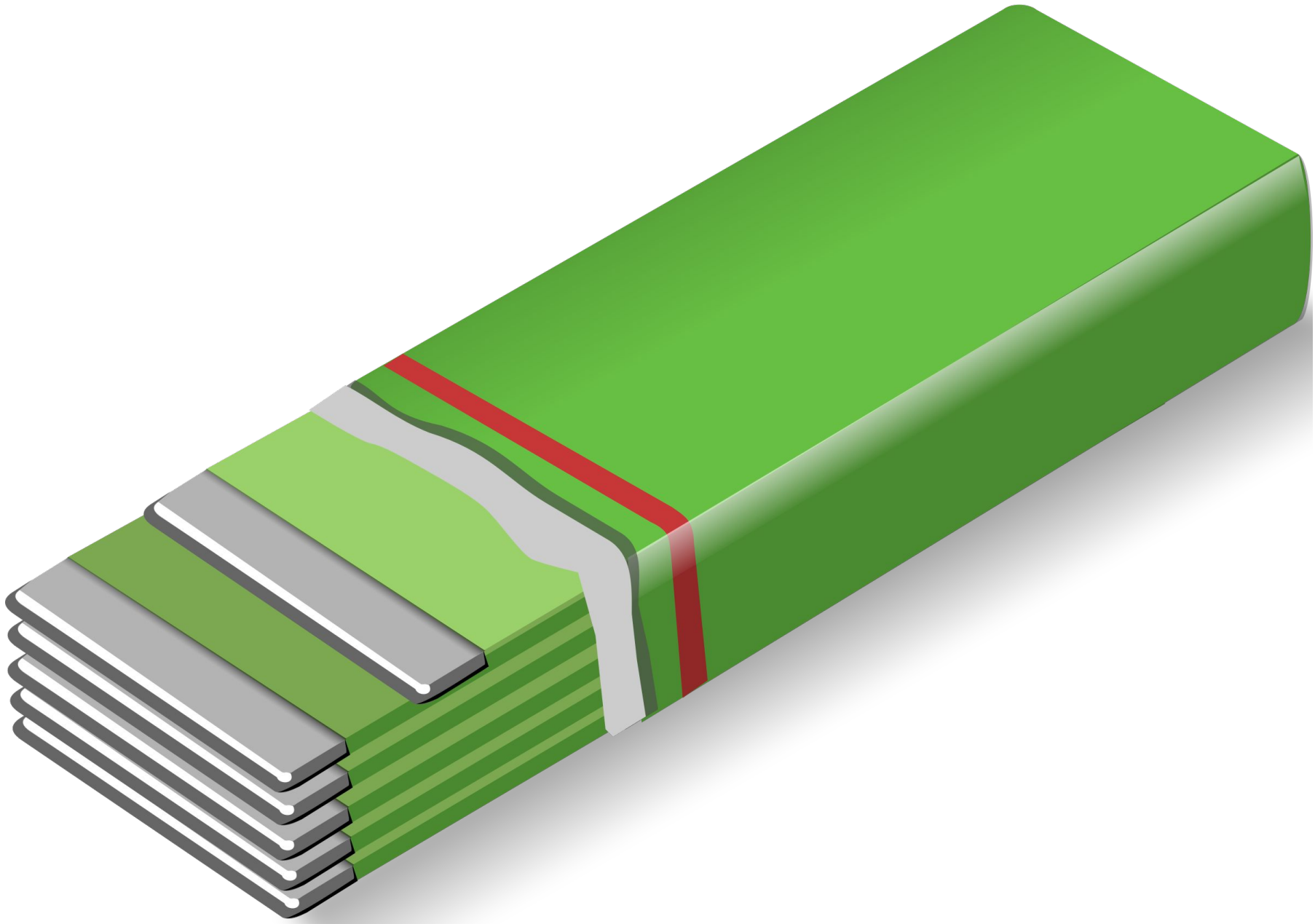


1234 5678 8765 4321

JOHN R SAMPLE

05/15















**l-lusc**

from New Latin *luscus*,  
plural of *luscus*,  
from mollis (Mollusca)

as snails, clams,  
soft, broadly

**l-lusc**

from New Latin *luscus*,  
plural of *luscus*,  
from mollis (Mollusca)

from  
from Gre  
(1816)

: a metallic e  
and tungsten in  
cially in strength

and is a trace element  
tabolism — see ELEMEN

**molybdenum disulfide**

: a compound  $MoS_2$  used espe

**mom**

(circa 1894)

: MOTHER

**mom-and-pop**

: being a small owner-operated bus

**mome**

archaic

**mo-moment**

from Middle French, from

movement, particle from mov

**mam**

(circa 1894)

: MOTHER

**mom-and-pop**

: being a small owner-operated bus











