

ENERGY TRANSMISSION

Леднев Д. С.
Группа № 352

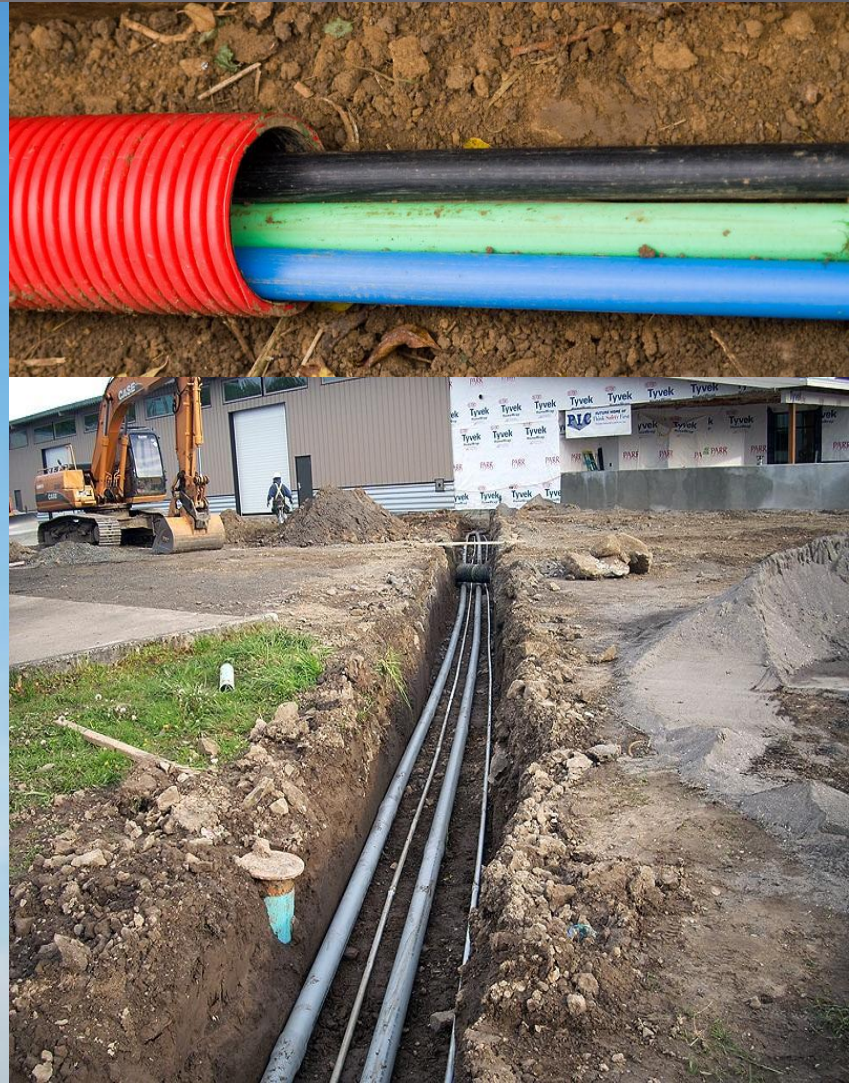
Energy transmission is one of the basic elements of modern communication



Practically, one can say that communication is carried out due to the energy being transmitted over the transmitting lines

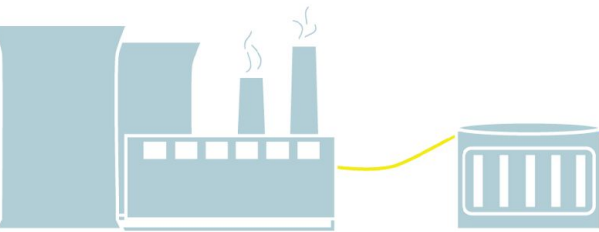


Lines used for energy transmission are classed into the following three types: overhead, indoor and underground

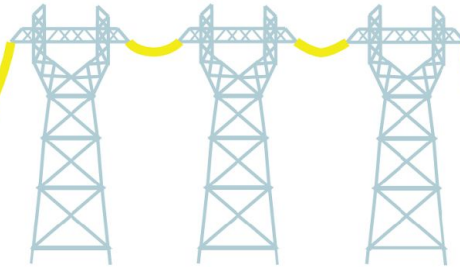


These types are different in construction and in the elements they are made of

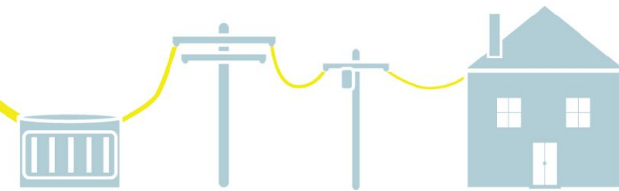
GENERATION



TRANSMISSION



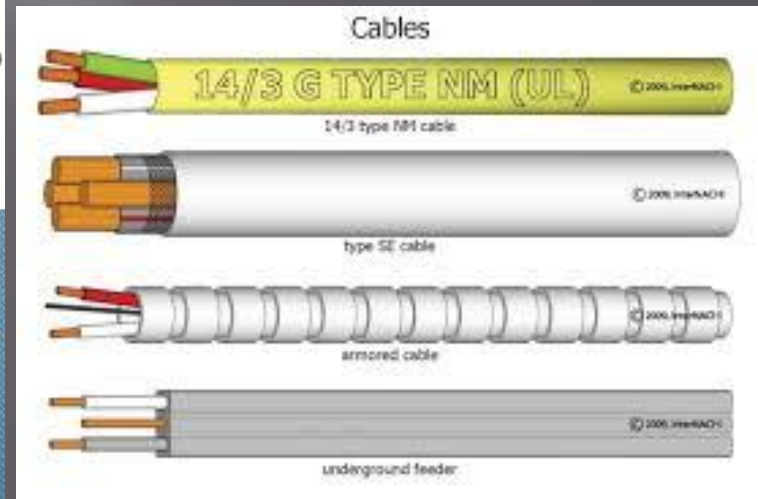
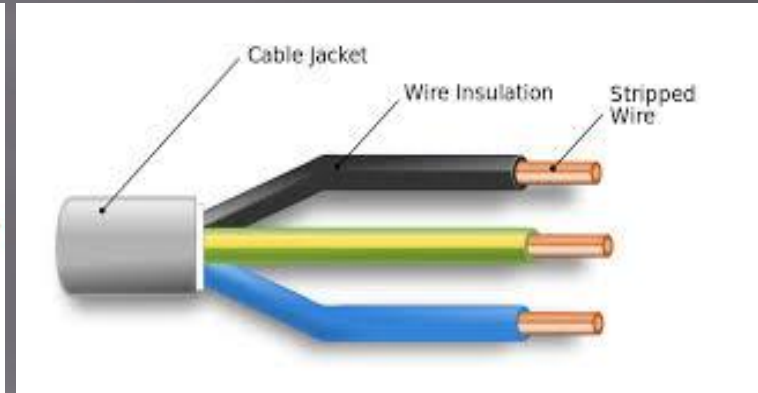
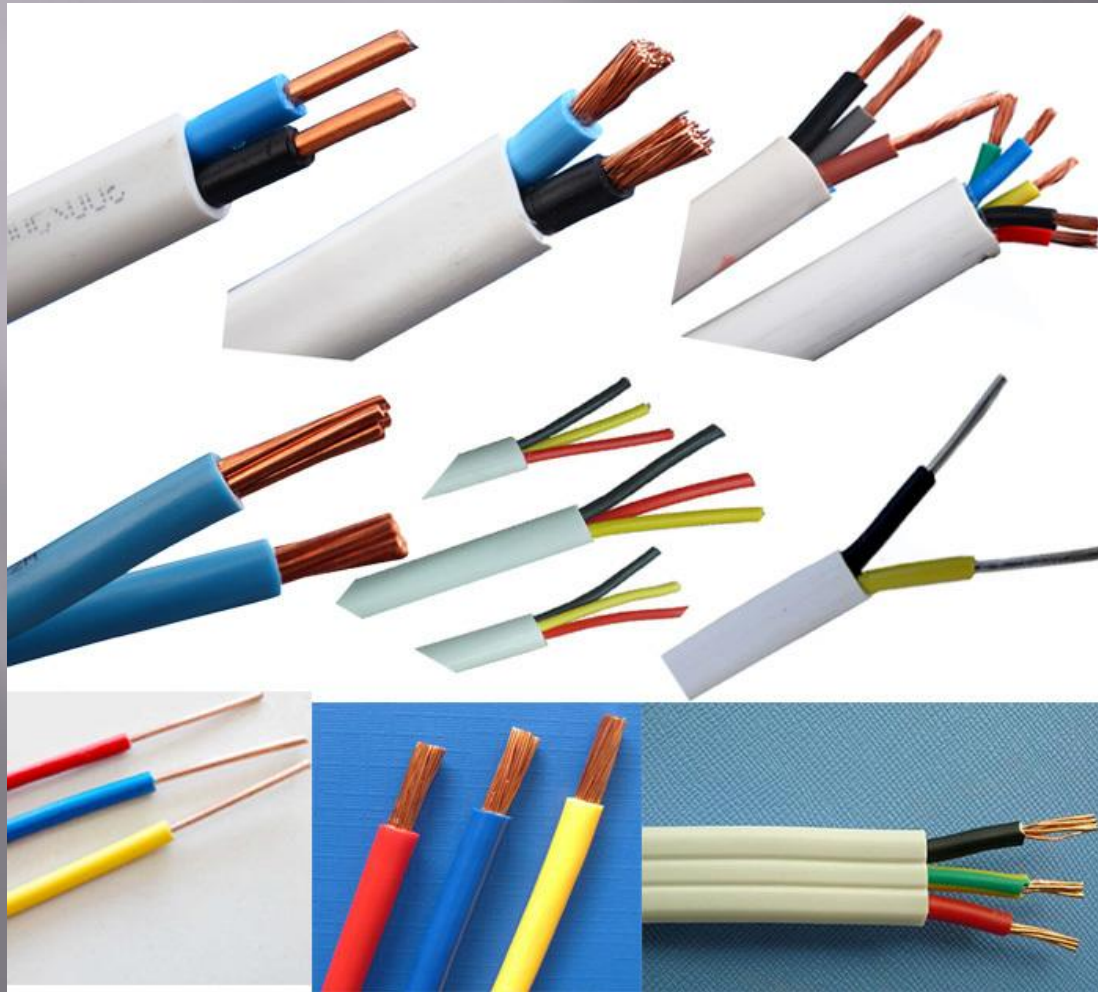
DISTRIBUTION



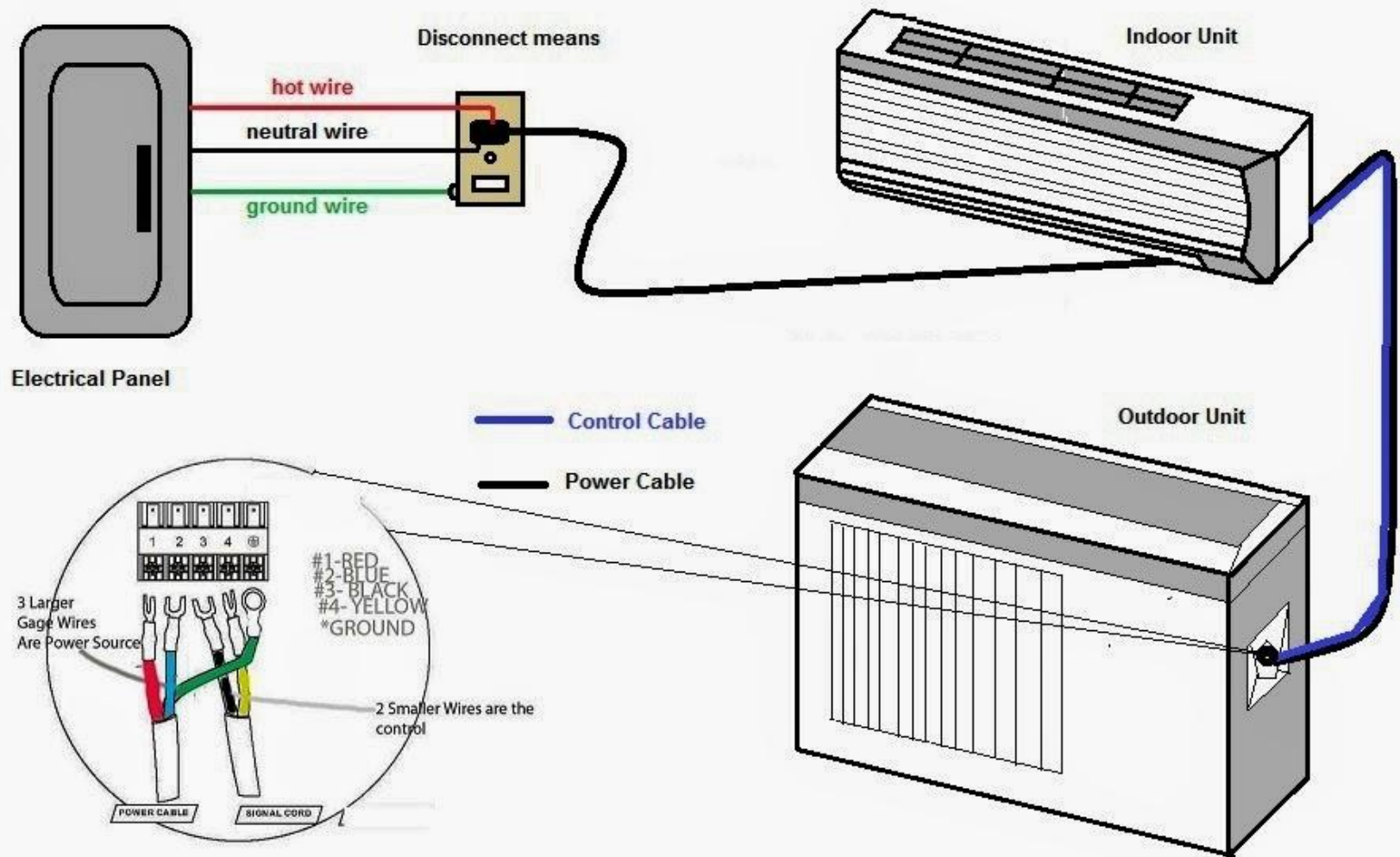
As for overhead lines, they include line conductors, insulators and supports



Indoor lines include conductors, cords and buses



The conductors in indoor lines may include one wire or a combination of wires



As for underground lines, they usually include line conductors and insulators



Underground lines are laid under earth



They are mostly used in cities and in industrial areas.



Источники информации

- А. Л. Луговая “Современные Средства Связи”
2008
- https://en.wikipedia.org/wiki/Electric_power_transmission
- https://en.wikipedia.org/wiki/High-voltage_cable