

6 5 4 3 2 1
 0 I III 0 II III 0 II III 0 II 0 I III 0 I III
 ми фа соль ре ми фа соль ля си до ре ми фа соль

A musical score in 4/4 time, featuring a treble clef and a key signature of one flat (E minor). The score consists of a single melodic line and a bass line. The melody is divided into three measures, each marked with a measure number (1, 2, 3) above the staff. The first measure is marked with the chord "Em" above the staff. The melody in the first measure consists of a quarter rest followed by a quarter note G4, an eighth note A4, a quarter note B4, an eighth note C5, and a quarter note D5. The second measure consists of a quarter note D5, an eighth note C5, a quarter note B4, an eighth note A4, and a quarter note G4. The third measure consists of a quarter note F4, an eighth note G4, a quarter note A4, an eighth note B4, and a quarter note C5. The bass line consists of a single note in each measure: G3 in the first measure, F3 in the second measure, and E3 in the third measure. The third measure of the melody is marked with three triplet brackets, each containing three eighth notes: G4-A4-B4, A4-B4-C5, and B4-C5-D5.

Am Dm C

mf

⑥ ⑤ ④ ③ ② ①

○ I III ○ II III ○ II III ○ II ○ I III ○ I III

||| ⊖ ○ ⊖ ⊖ ○ ⊖ ⊖ ○ ⊖ ⊖ ○ ⊖ ⊖ ○ ⊖ ⊖ ○ ⊖ ⊖

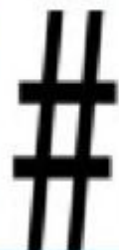
||| ⊖ ○ ⊖ ⊖ ○ ⊖ ⊖ ○ ⊖ ⊖ ○ ⊖ ⊖ ○ ⊖ ⊖ ○ ⊖ ⊖ ○ ⊖ ⊖

ми фа солъ ми фа солъ ля си до ре ми фа солъ

ми фа солъ

Знаки альтерации

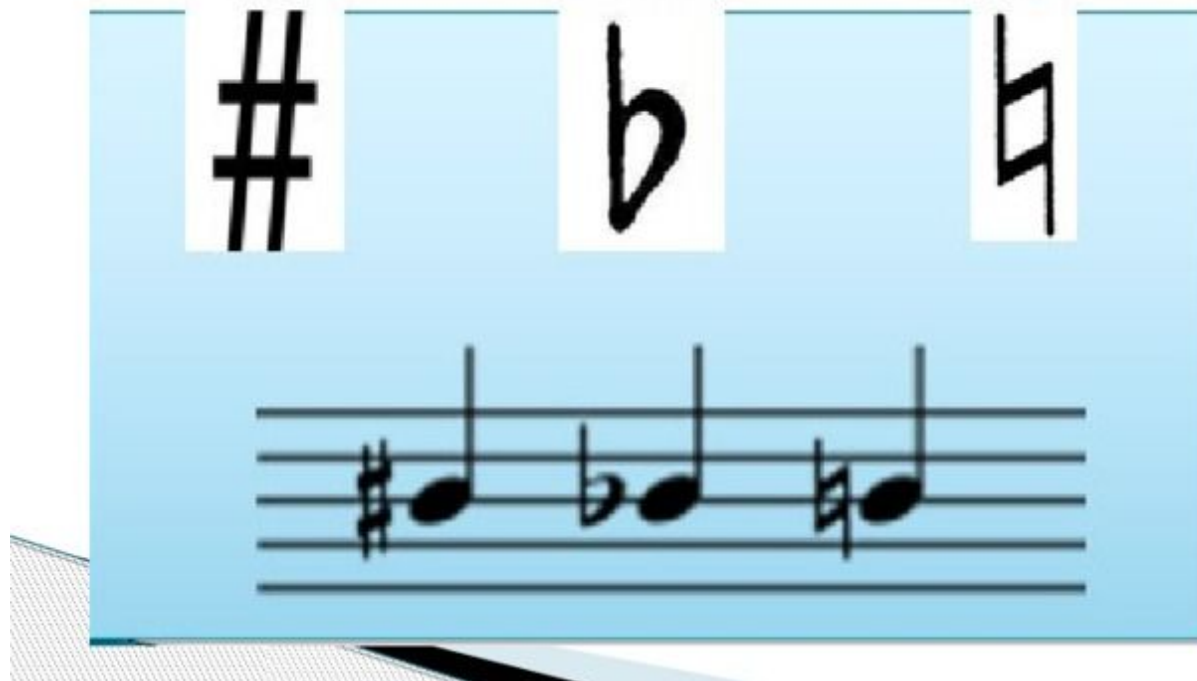
диез



бемоль



бекар



диез

повышает на полтона



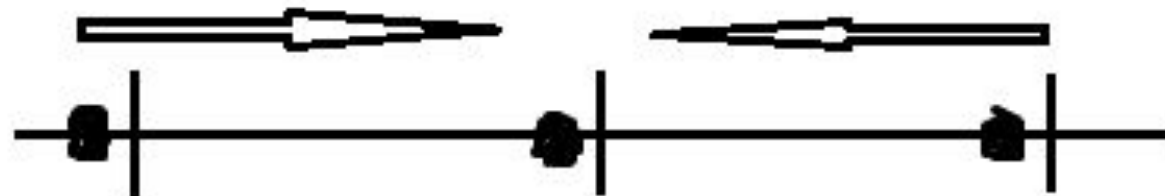
бемоль

понижает на полтона



бекар

отменяет любую альтерацию

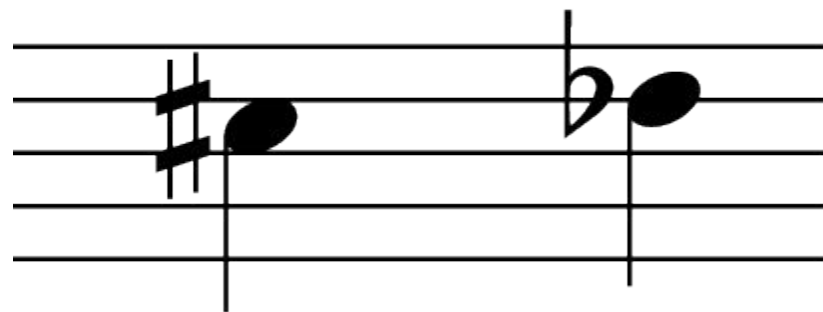


до

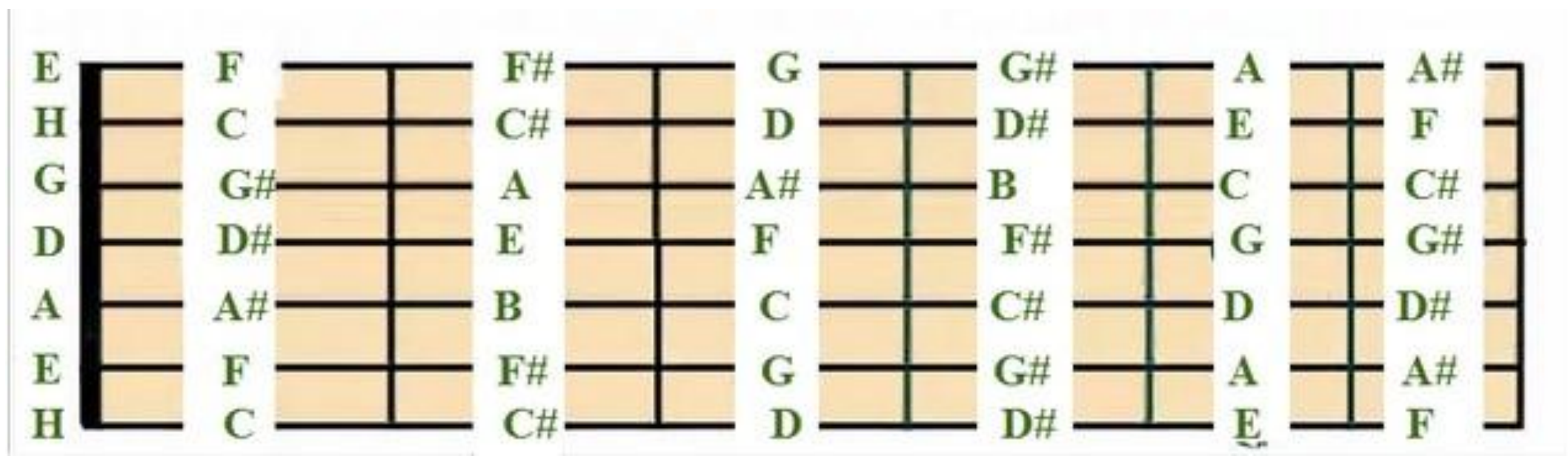
до# ре b

ре

Ре бемоль



До диез

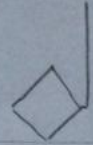


Аккордовая последовательность 1.

The image displays a musical score for a piece in 4/4 time, consisting of two staves. The first staff begins with a treble clef and a 4/4 time signature. It contains two measures: the first measure is marked with a '1' and the chord 'Am', and the second measure is marked with a '2' and the chord 'Dm'. The melody consists of eighth notes, and the bass line consists of quarter notes. A dynamic marking of *mf* is placed below the first measure. The second staff begins with a treble clef and contains two measures: the first measure is marked with a '3' and the chord 'E', and the second measure is marked with a '4' and the chord 'Am'. The melody continues with eighth notes, and the bass line continues with quarter notes. A yellow highlight is present under the first note of the second measure of the second staff. The piece concludes with a double bar line.

Аккордовые последовательности

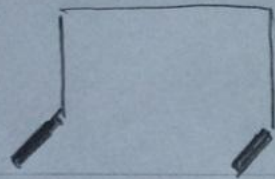
- Am | Dm | E | Am ||
- Dm | Am | E | AmA7 || Am
- Am | C | Dm | E || Am
- Am | C | Dm | G || Am
- G | C | G | D || G
- G D | Am | G D | C || G
- Em | C | G | D || Em
- Em | D | C | H7 || Em



△A - A



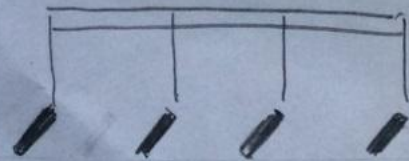
△A



TA - KA



TA - KI - TA



TA - KA - DY - MI

