



Prepositions of place



The dog is the
box. on



The dog is the
hat. **under**



The dog is **in**... the box.



The dog is the box.

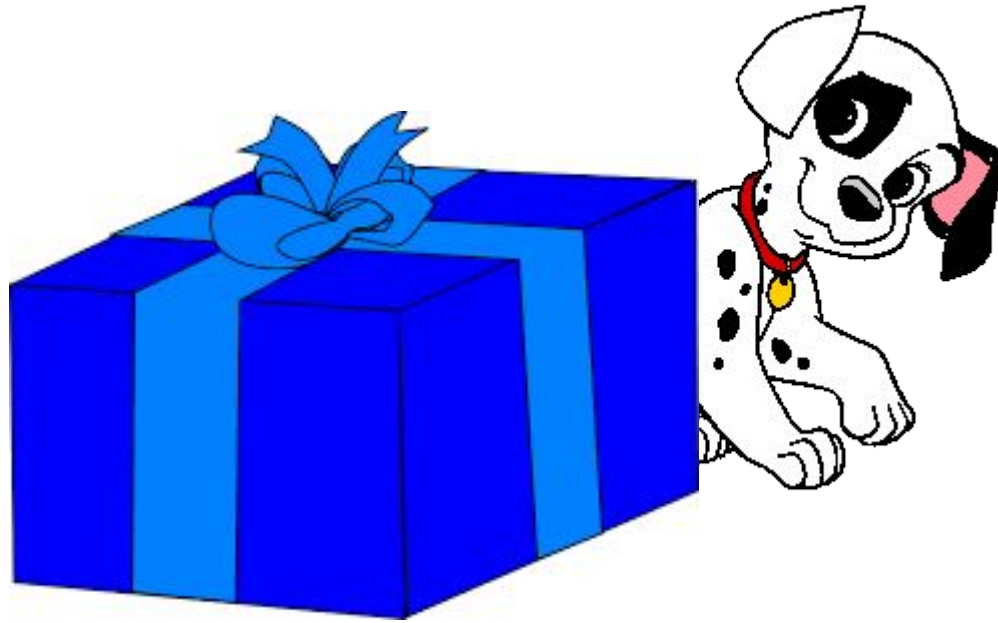
over



The dog is **in front** of the box.



The dog is **between** the boxes.



The dog is the box.
behind



The dog is **among** the boxes.



The dog is **next** the ball.
to



on



among

over



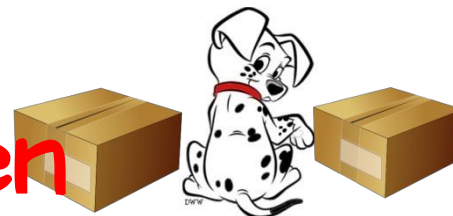
under

in front of



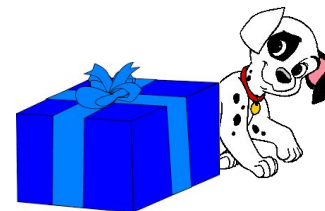
in

between



next to

behind



Now...



Let's play and
practise!

The boy **is behind** the books.



under

over

behind



The cat is **in** the
box



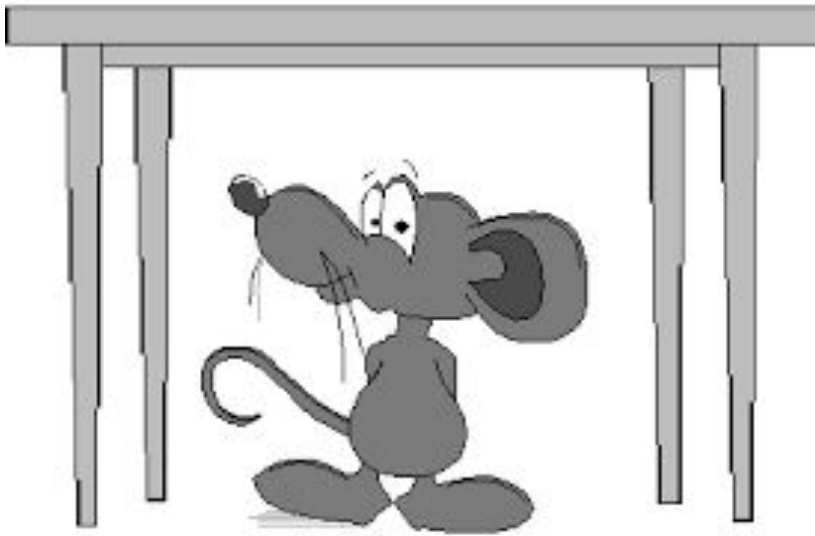
behind

in

next to



The mouse is **under** the
table.



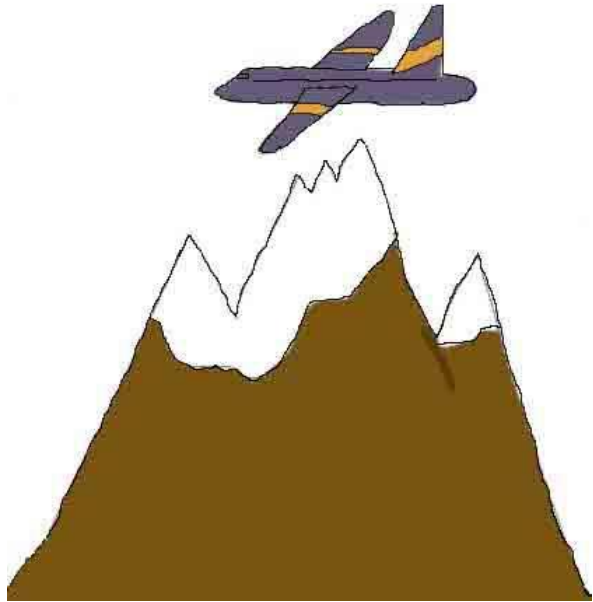
among

under

over



The plane is **over** the mountain.



over

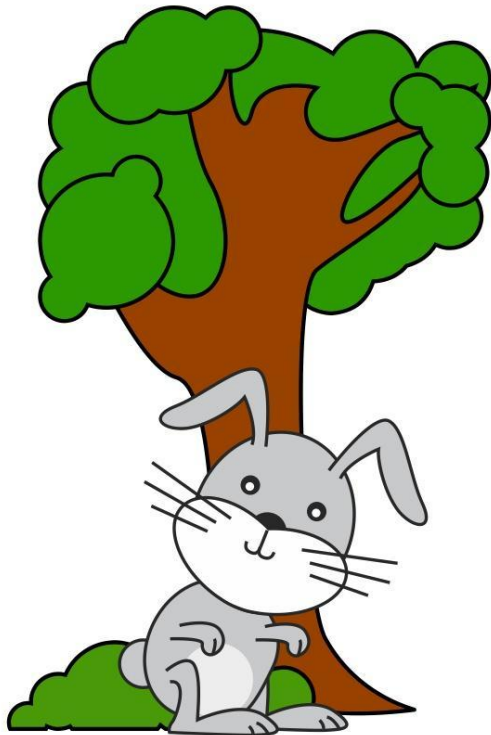
between

n

on



The rabbit is **in front** of the tree.



www.thelearningsite.info

in front
of

next to

behind



The man is **next to** the table.



among
between

n

next to



The dog is **between** the butterflies.



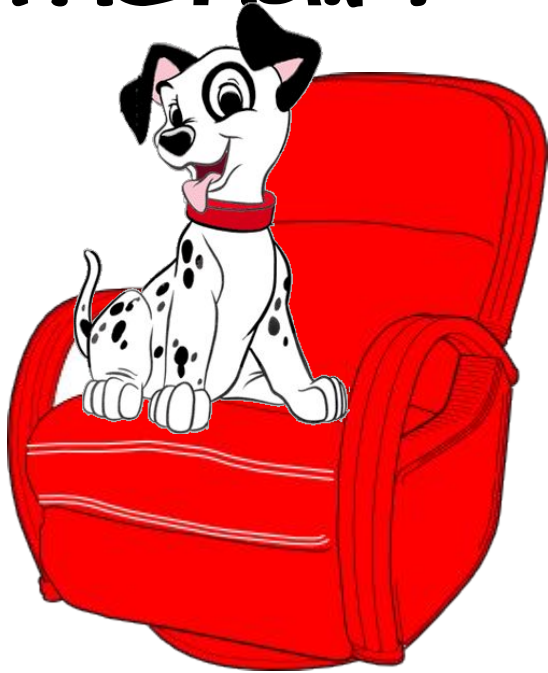
betwee

**in front
of**

over



The dog is ⁱⁿ..... the
armchair.



over

in

next to



The witch is **among** the pumpkins.



among

over

next to





on



among

over



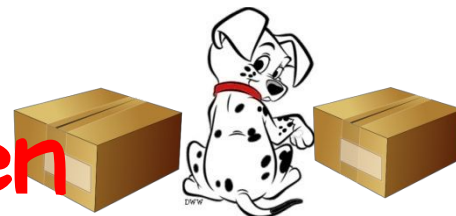
under

in front of



in

between



next to

behind

