

# DOWNLOAD & MOBILE ID RELEASE NOTE

DATE 2015. 04. 16  
WRITER Minsu.Yeo / jaechul.ha

MODEL INFO	MODEL NAME	LGH502F			COMMAND TYPE	<input type="checkbox"/> DIAG <input checked="" type="checkbox"/> AT <input type="checkbox"/> STANDARD
	WORK TYPE	<input type="checkbox"/> MID	<input checked="" type="checkbox"/> Inline D/L	<input checked="" type="checkbox"/> Normal D/L	Applied Factory Image	

## Download & Inline Download

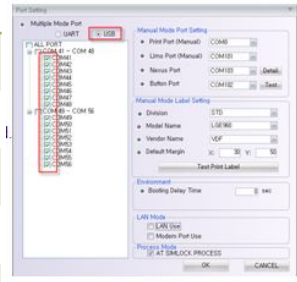
DLL	LGH502f_20150416_LGFLASHv190.dll
Version	1.0.0.2
Inline ST	510sec
Upgrade ST	400sec
Chipset	MT6582
Memory	8GB eMMC
Bin Size	2.09 GB
Contact	<a href="mailto:Minsu.yeo@lge.com">Minsu.yeo@lge.com</a> (여민수)

Zephyrus	Milkyw av
MODE : CDMA_OUT VCHAR : 5.9V LAN2USB <910K> REMOTE <2.7V>	MODE : CDMA_OUT VCHAR : 5.9V IN-LINE DOWNLOAD REMOTE <2.7V>

LG FlashTool Version	
INLINE	Normal
V 1.0.8.9↑	V 1.9.0.0↑

## Mobile ID

Total ST	120sec
F/R ST	0sec
COMM	USB 56K
DLL VER	Over 15.03.06.00
FRAME VER	Over 14.6.27.0
Contact	<a href="mailto:Jaechul.ha@lge.com">Jaechul.ha@lge.com</a> (하재철)



Milkyway/Zephyrus
Mode : CDMA_OUT VCHAR : 5.8V USB D/L <56K> REMOTE <2.7V>

## Change History

- Support USB communication.
- Support Test Mode (AT Type)
- This model needs LG united USB driver for production.
- 1st Booting process apply
- USB 통신을 지원
- Test Mode(AT 명령어 사용), 모델 선택 시 division을 AT로 선택
- LG USB driver가 설치가 되어야 합니다.
- 1ST Booting process 적용