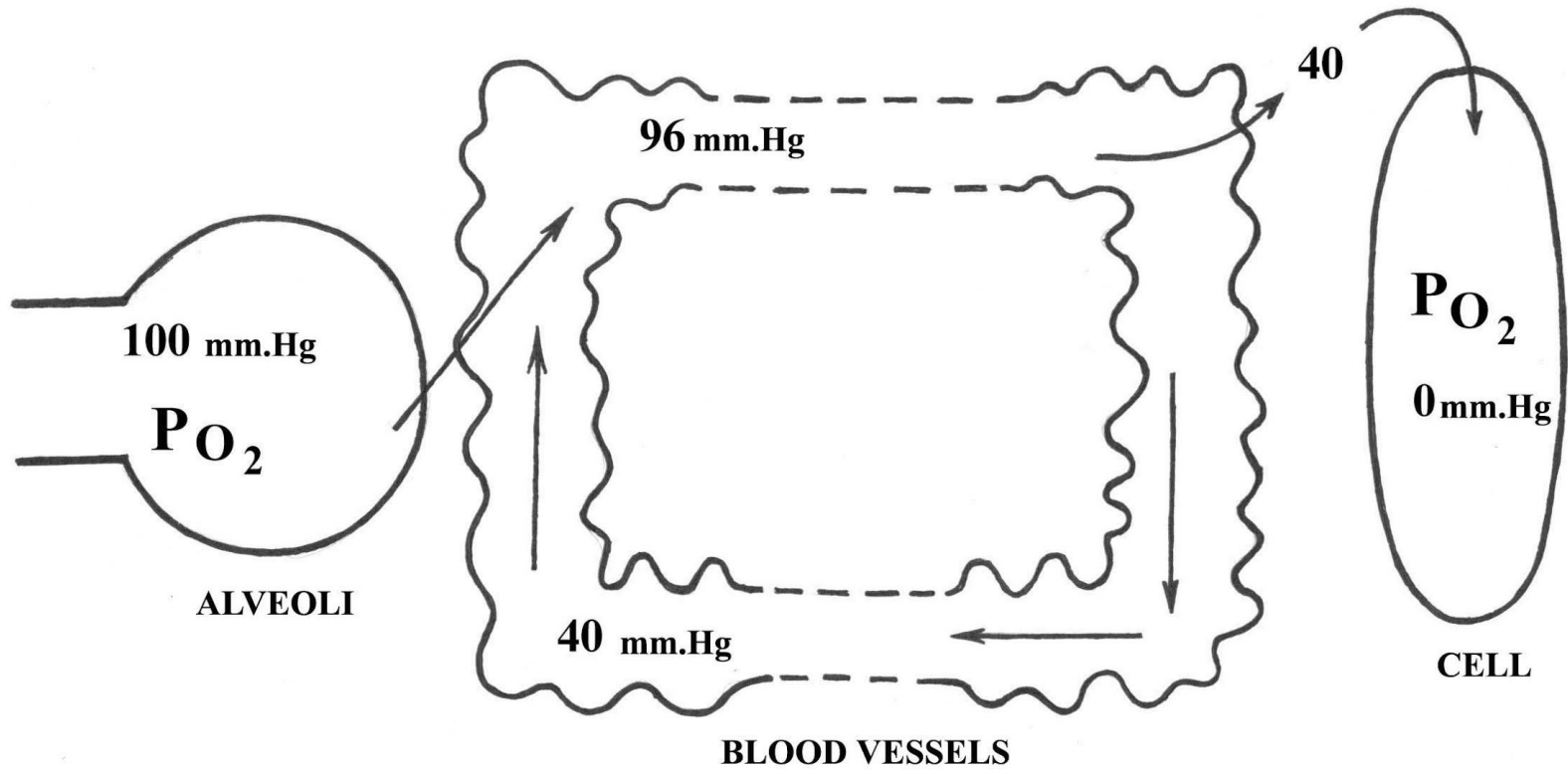
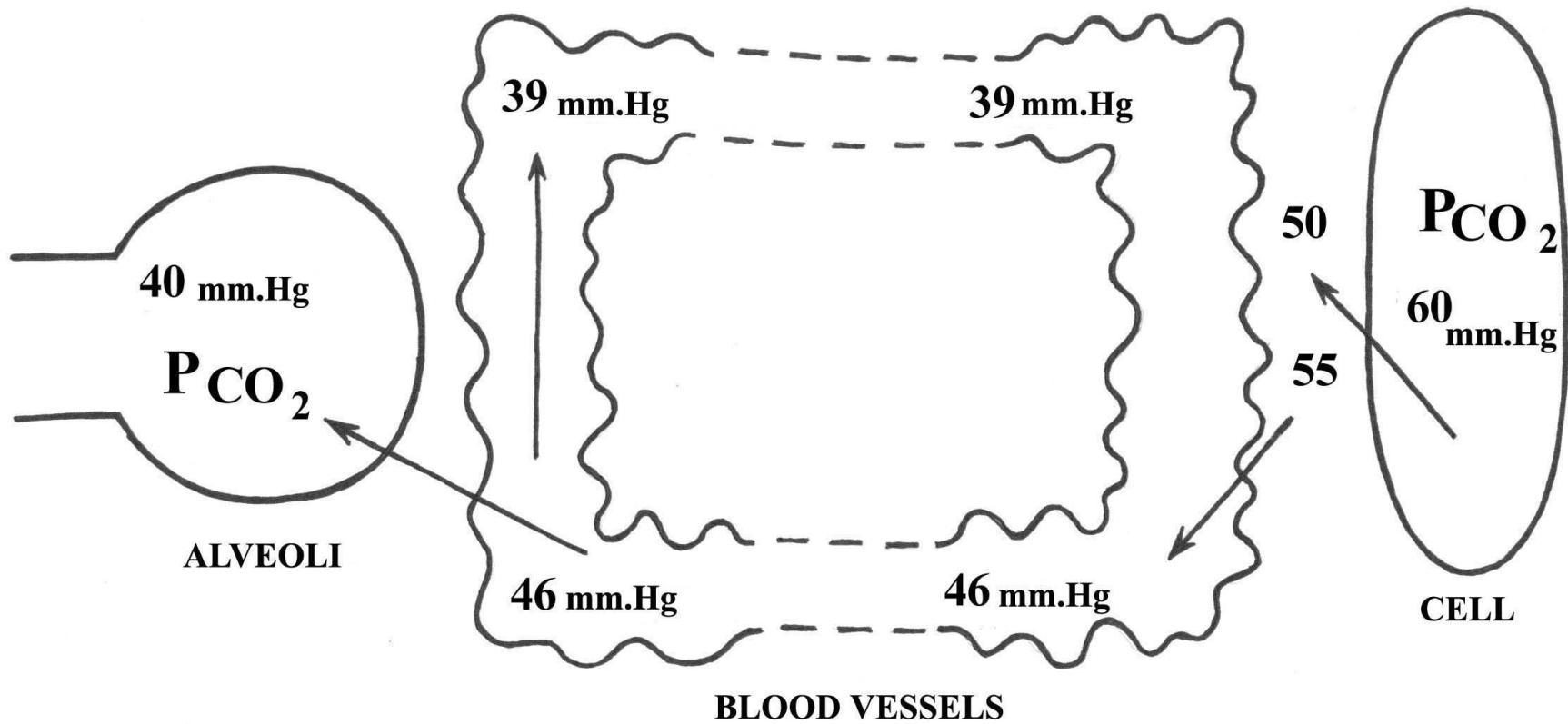


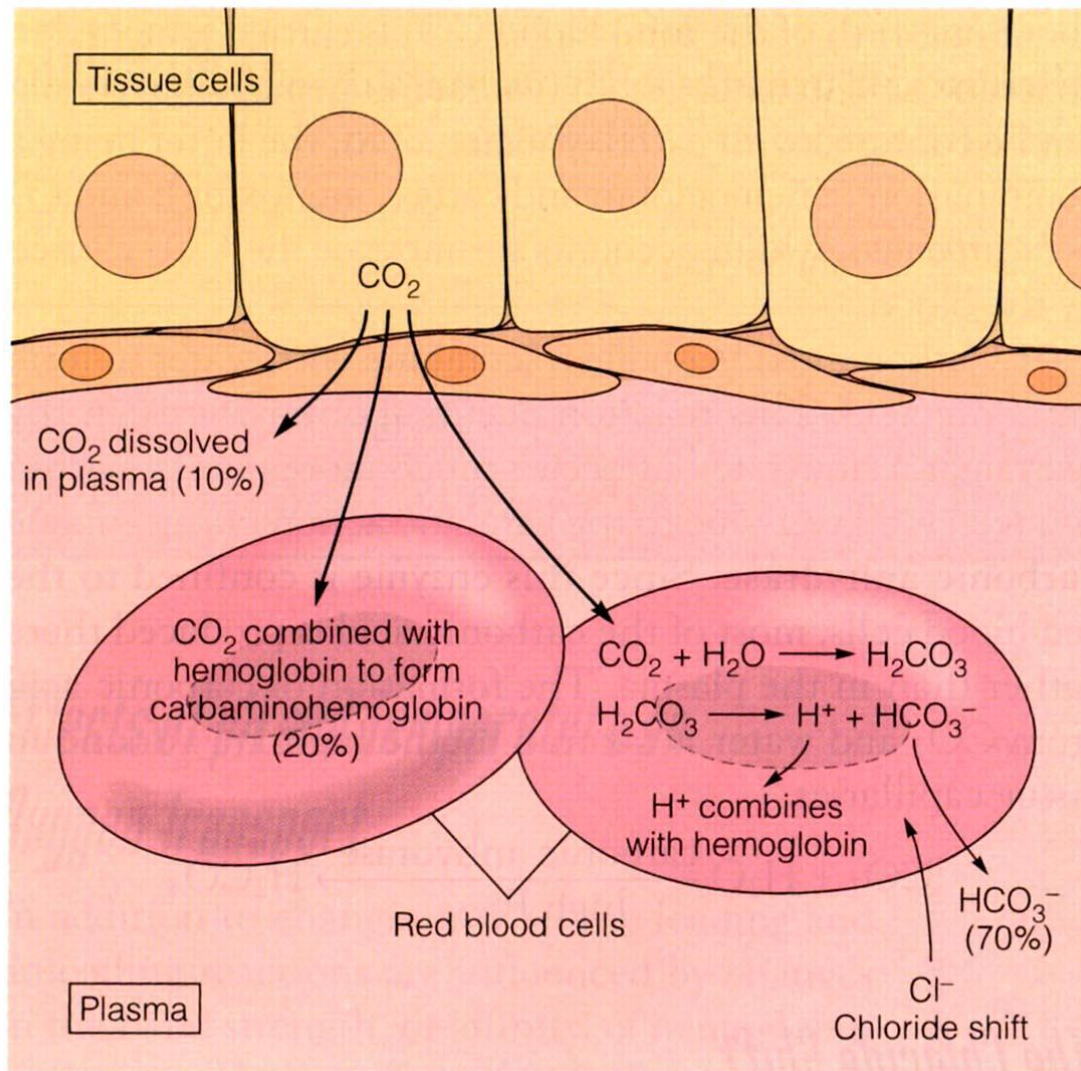
Transport of gases.
Regulation of respiration



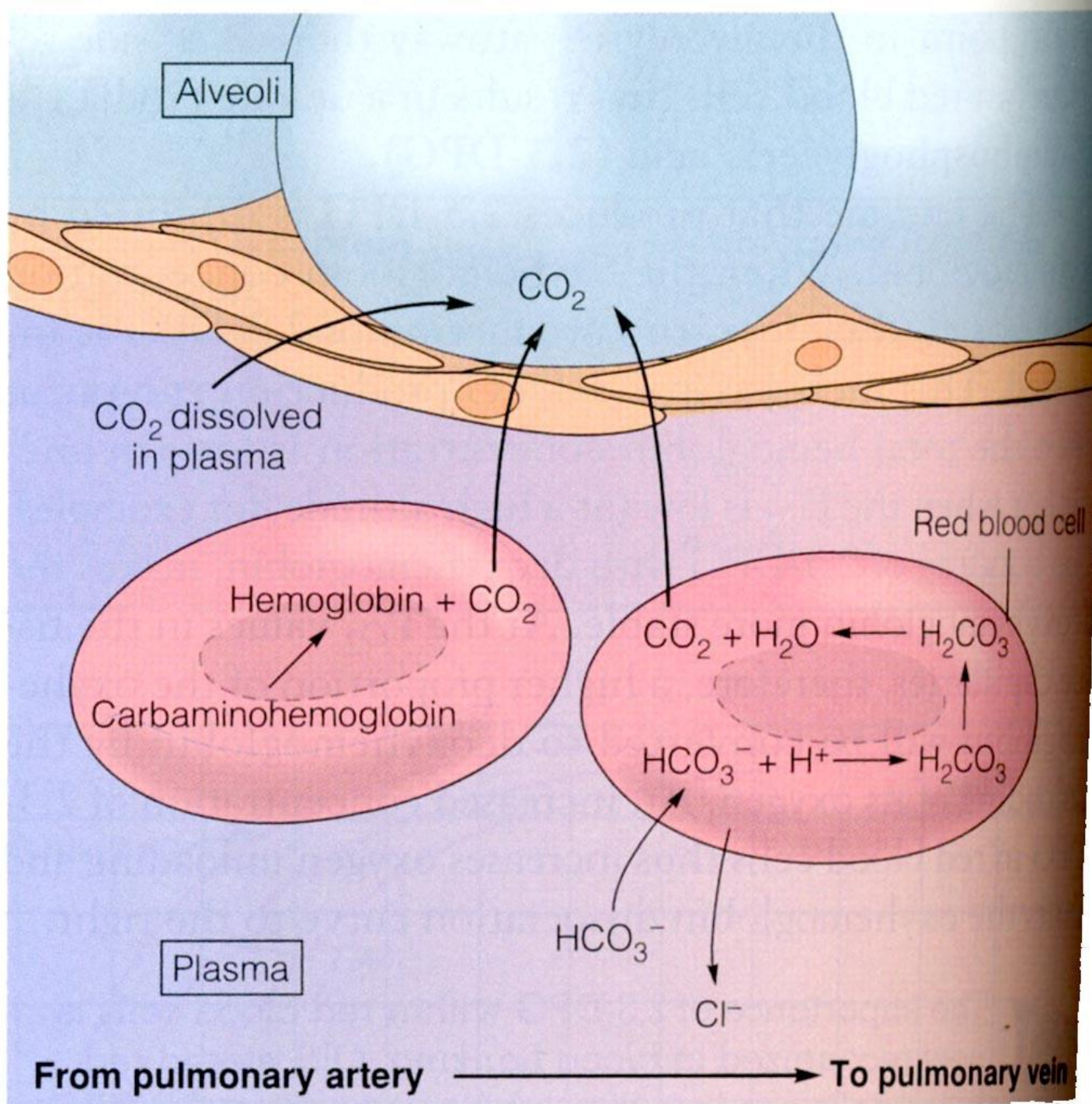
OXYGEN TRANSPORT BY BLOOD



CARBON DIOXIDE TRANSPORT BY BLOOD



An illustration of carbon dioxide transport by the blood and the "chloride shift." Carbon dioxide is transported in three forms: as dissolved CO_2 gas, attached to hemoglobin as carbaminohemoglobin, and as carbonic acid and bicarbonate. Percentages indicate the proportion of CO_2 in each of the forms.



REGULATION OF RESPIRATION

