



Zoo

Describing animals

BY HERBER

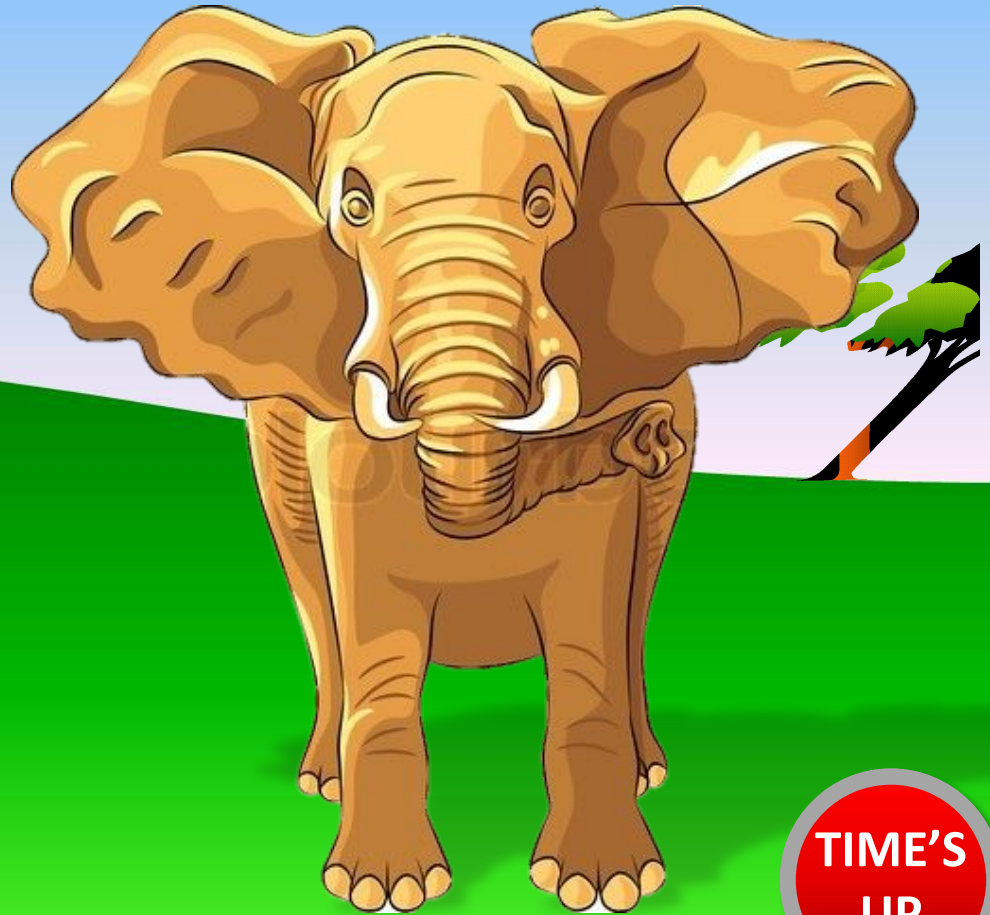
What animal is it?

It's an **ELEPHANT**



ZOO

It has big ears, a long
nose and big tusks.
It lives in Africa and
India.



**TIME'S
UP**

What animal is it?

It's a **CHIMPANZEE**



ZOO

It has big ears and long arms. It usually lives on trees. It loves bananas.



**TIME'S
UP**

What animal is it?

It's a **LION**



ZOO

It has a big mouth,
long hair and a tail.
It also has strong legs
with claws.

**TIME'S
UP**

What animal is it?

It's a **TIGER**



ZOO

It has a long body
with orange and black
stripes, a short neck
and a long tail.



**TIME'S
UP**

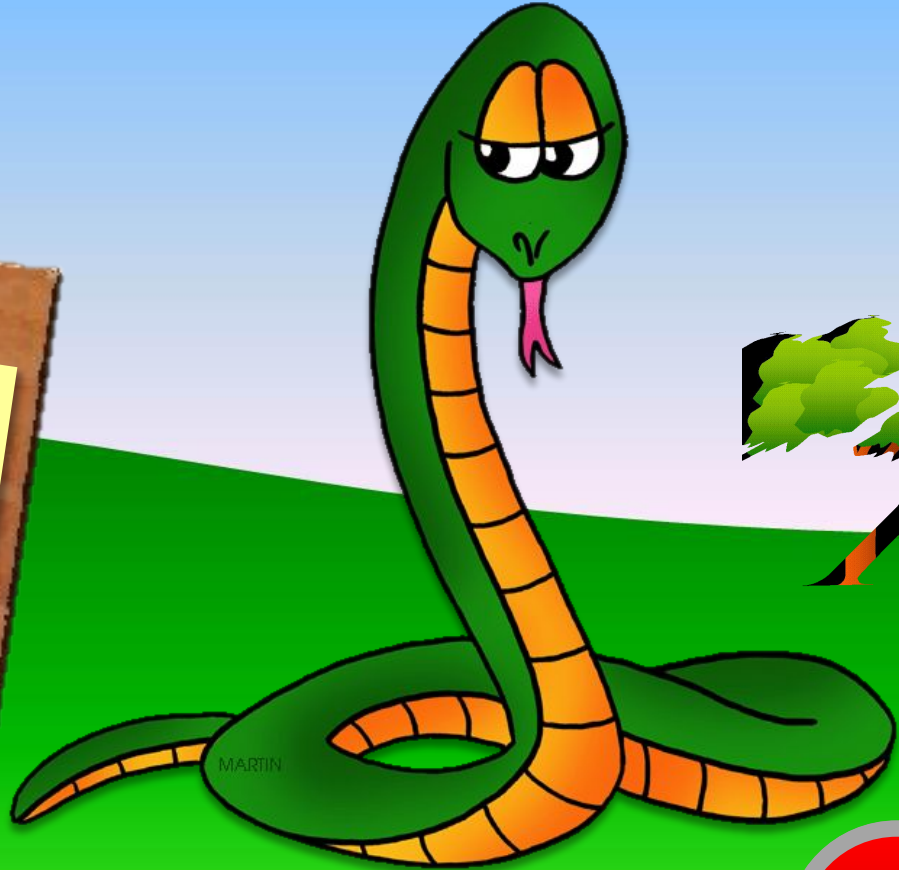
What animal is it?

It's a **SNAKE**



ZOO

It has a long body
covered with scales. Its
tongue is thin and long.
It has no legs.



**TIME'S
UP**

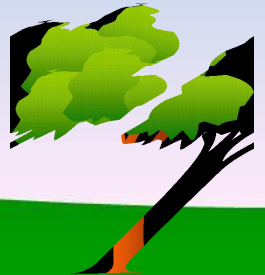
What animal is it?

It's a **BEAR**



ZOO

It has a big body
covered with thick fur,
a big mouth and strong
claws. It loves honey.



**TIME'S
UP**

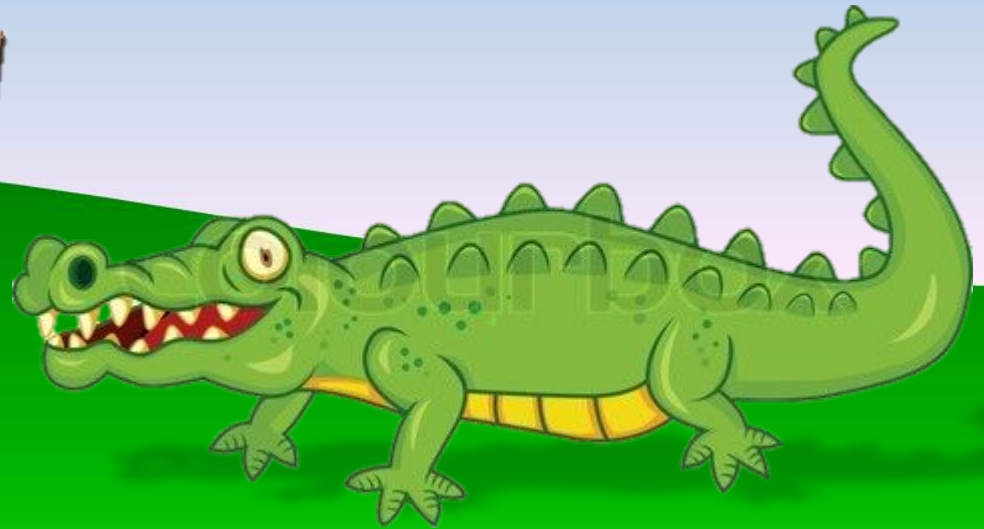
What animal is it?

It's a **CROCODILE**



ZOO

It has a big mouth
with a lot of teeth, big
eyes and a long tail. It
swims in rivers.



**TIME'S
UP**

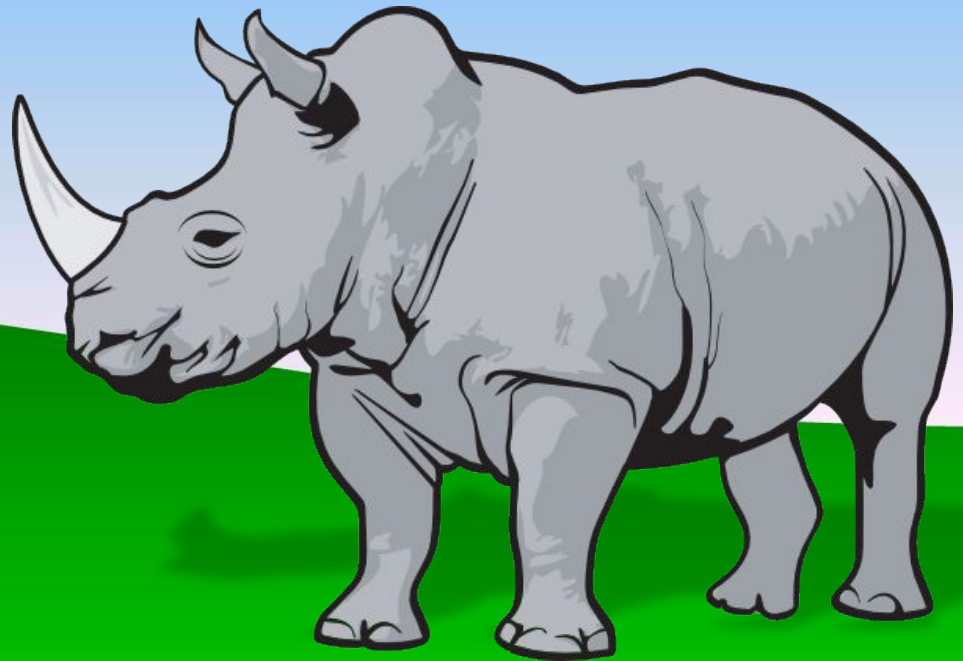
What animal is it?

It's a **RHINOCEROS**



ZOO

It has a big body,
strong legs, two small
eyes and a big horn
on its face.



**TIME'S
UP**

What animal is it?

It's a **ZEBRA**



ZOO

It has a wide neck, two pointed ears, four long legs with hooves and a long tail. It has black and white stripes.



**TIME'S
UP**

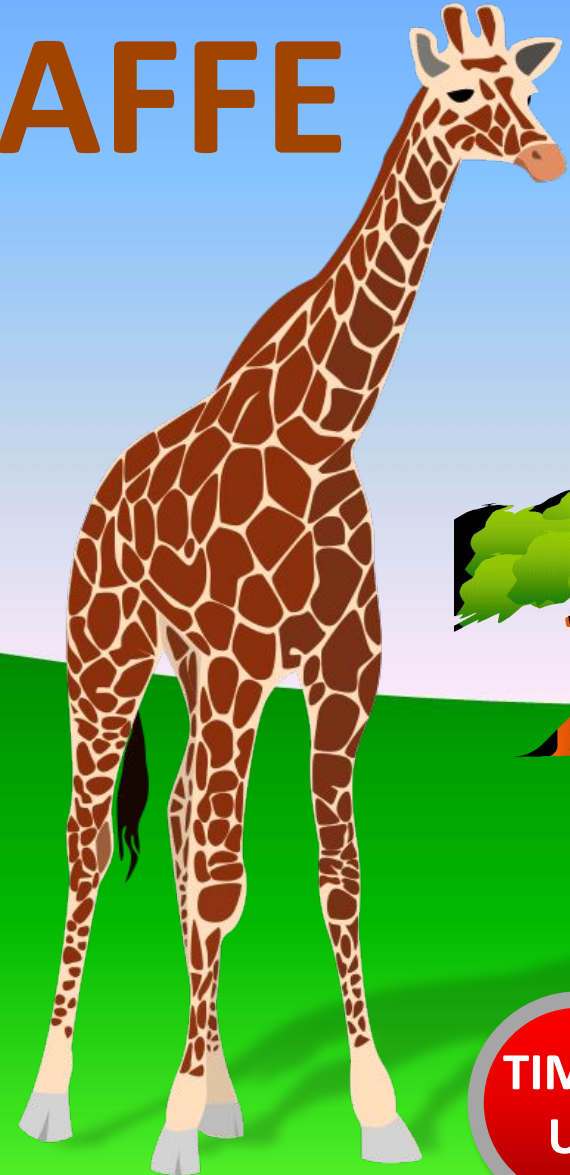
What animal is it?

It's a **GIRAFFE**



ZOO

It has a very long neck
and very long legs. Its
has spotted skin. It
eats leaves.



**TIME'S
UP**

What animal is it?

It's a **BALD EAGLE**



ZOO

It has big wings and
a curved beak. It has
white feathers on his
head. It hunts with its
powerful claws.



**TIME'S
UP**



**THE
END**

