




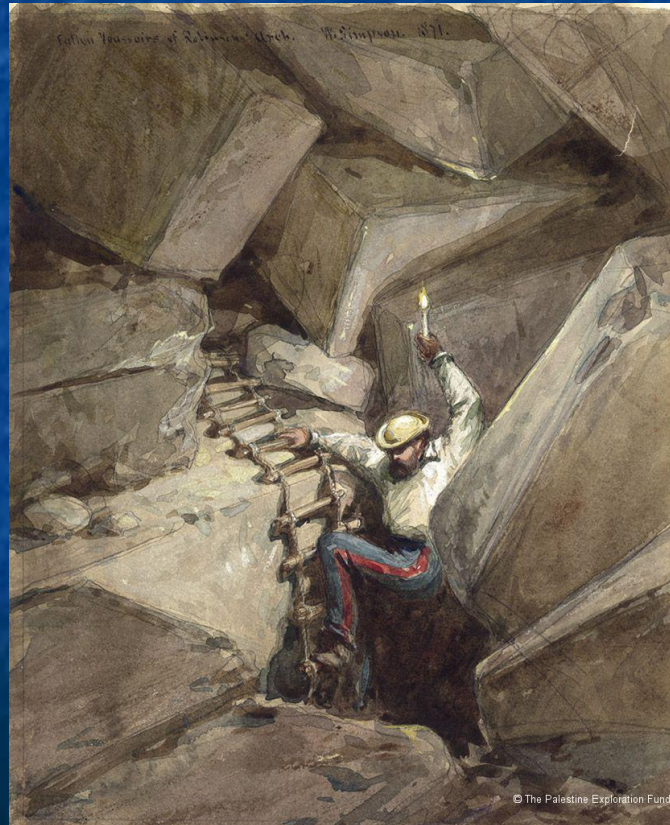
За водой пойдешь...



д-р Митя Фрумин

**Nadassah
Academic
College
Jerusalem**

18 июня 2019
«Эшколот»



**PALESTINE
EXPLORATION FUND.**


PAIS—THE QUEEN.

QUARTERLY STATEMENT.

JULY, 1900.

LONDON:
PUBLISHED AT THE FUND'S OFFICE,
38, CONDUIT STREET, W.

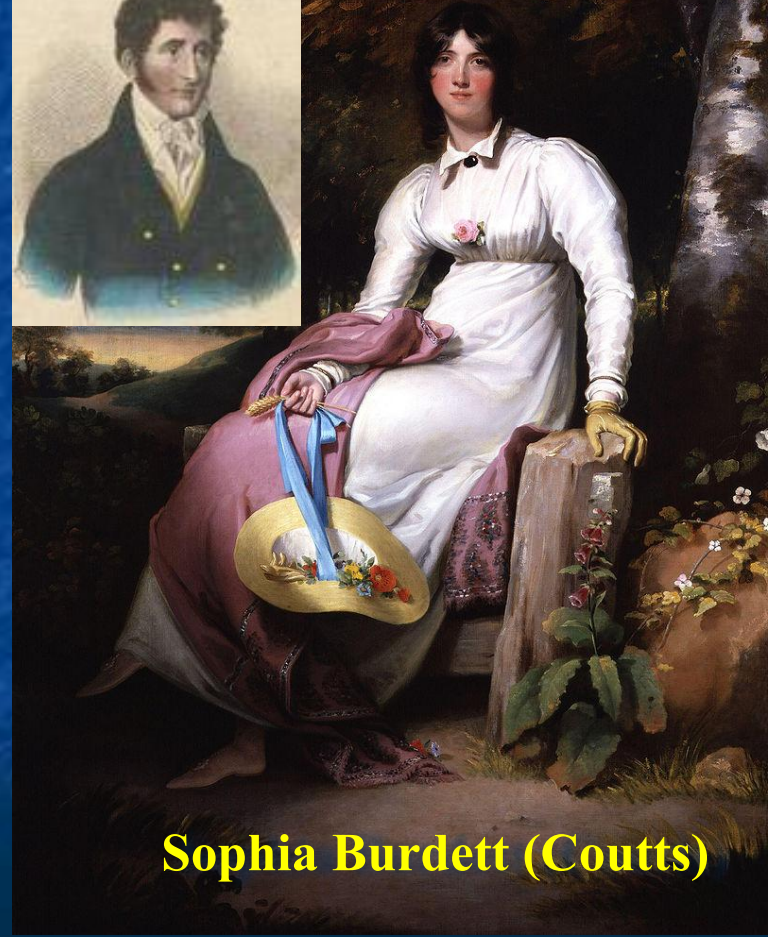
TO BE HAD AT 42, QUINCY STREET, CAMBRIDGE, MASS., U.S.A.



**Angela Georgina Burdett
(1814 –1906)**



**Sir Francis Burdett,
5th Baronet
(1770 –1844)**



Sophia Burdett (Coutts)



**Thomas Coutts
(1735 –1822)**



**Harriet Beauclerk,
Duchess of St Albans
(1777 –1837)**



**Angela Burdett-Coutts,
1st Baroness Burdett-Coutts**





- Доступное жилье для рабочих
- The London Ragged School Union
- Школы швей
- Поддержка рыболовства в Ирландии
- Трудоустройство мальчиков-сирот
- Социальная поддержка женщин
- The Turkish Compassionate Fund
- Хлопкоочистительные машины для Нигерии
- Поддержка аборигенов Австралии и даяков Калимантана
- Колокола для собора Св. Павла в Лондоне
- Приобретение греческих манускриптов
- Фонтан в Victoria Park
- питьевые фонтаны для собак

~ £ 3,000,000



BARONESS BURDETT-COUTTS.

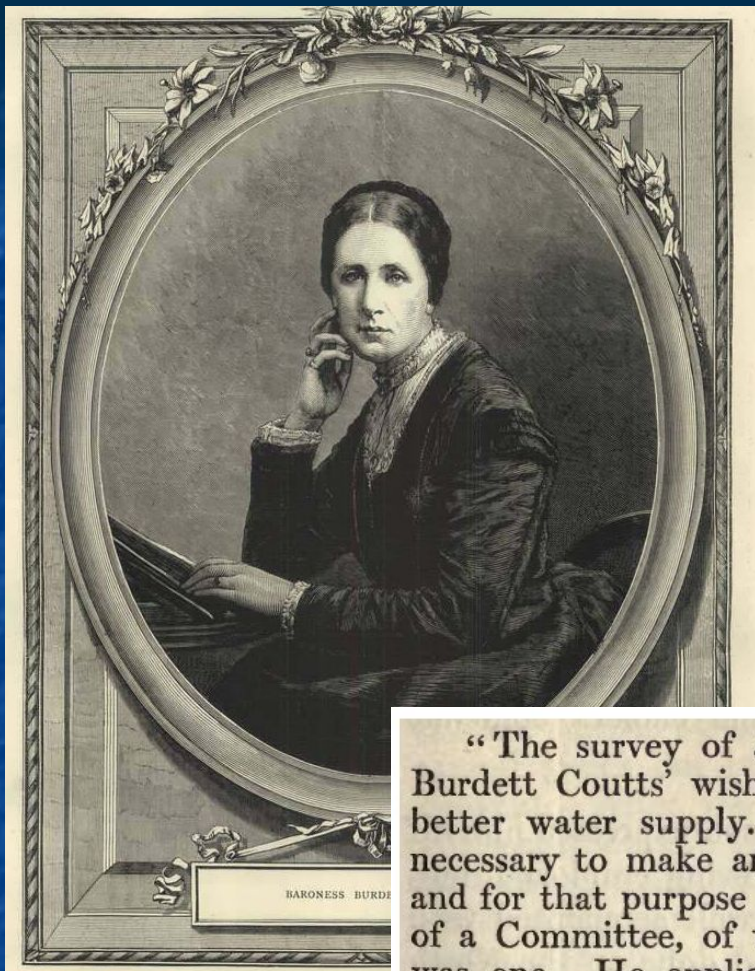


MR. W. L. ASHMEAD BURDETT-COUTTS BARTLETT.—SEE PAGE 186.

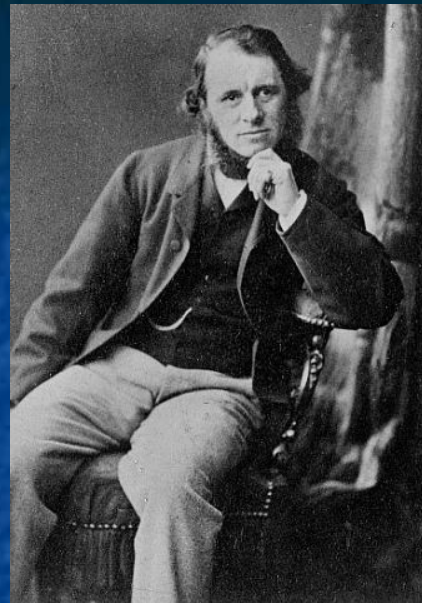
**Angela Burdett-Coutts,
1st Baroness Burdett-Coutts
(1814 –1906)**

**William Lehman Ashmead
Bartlett Burdett-Coutts
(1851 –1921)**

1864



£ 500



**Sir George Grove
(1820 – 1900)**

**Dean Stanley
(1815-1881)**



“The survey of Jerusalem originated in Miss Burdett Coutts’ wish to provide the city with a better water supply. She was told it was first necessary to make an accurate survey of the city, and for that purpose she placed £500 in the hands of a Committee, of whom the late Dean Stanley was one. He applied to the Secretary of State for War, who placed the matter in Sir H. James’s¹ hands. The conditions were that £500 was to cover all expenses, including the passage out and home of the surveyors, and the preparation of the plans. An officer was to go, but he was to pay all his own expenses, and receive no extra pay whilst employed.





**Sir Charles William Wilson
(1836 –1905)**



1868



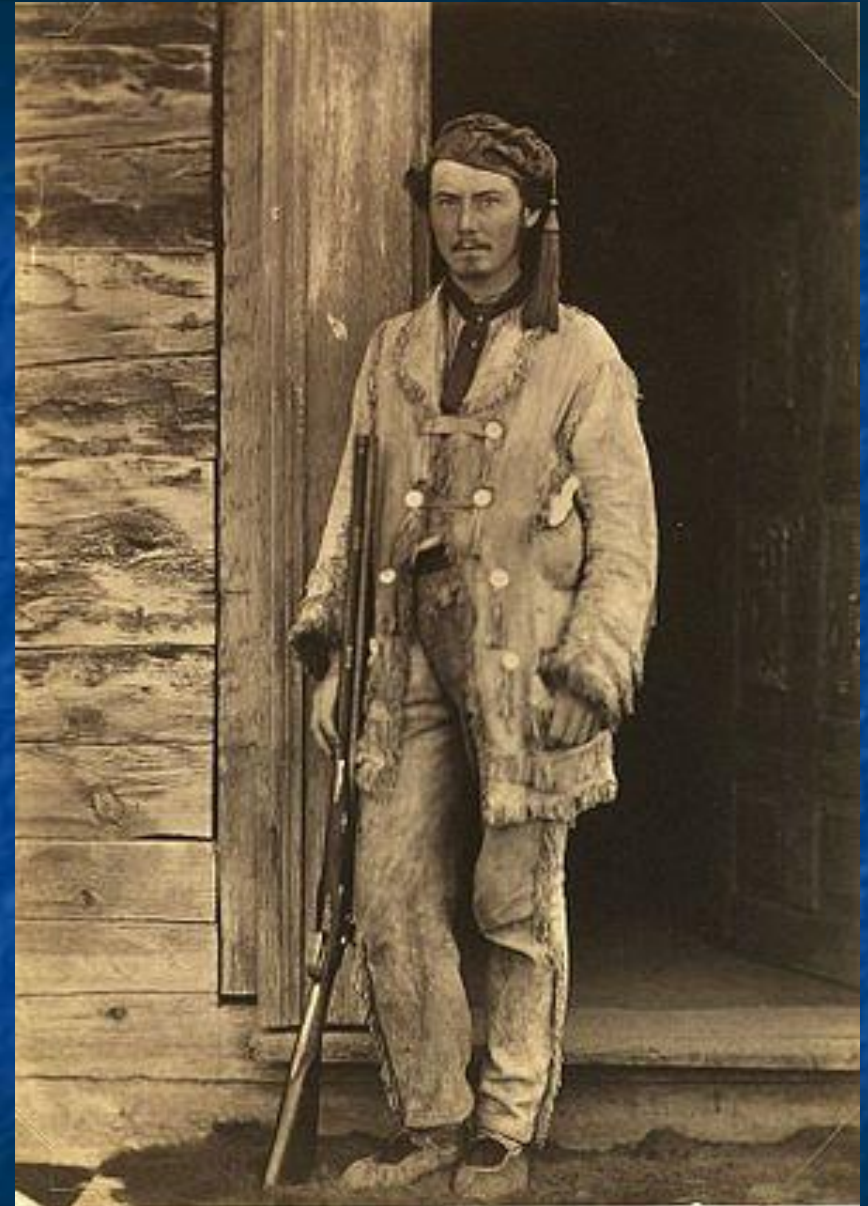
1862



**Royal Military Academy, Woolwich
1855-1857**



**The British Boundary Commission
1858-1862**



Lt. Charles Wilson



COURTESY OF PROVINCIAL ARCHIVES OF BC

Officers of the Boundary Commission. Standing (l. to r.): Lieutenant Anderson, RE; Colonel Hawkins, RE; Lieutenant Wilson, RE. Sitting (l. to r.): Captain Darrab, RE; Mr. Lord; Captain Haig, RA.

1862



KARTE VON JERUSALEM
und seiner nächsten Umgebungen
 geometrisch aufgenommen
 von
F. W. Sieber
 im Jahre 1823.
 PRAG

*Bei Martin Neumann Neudruck
 Leipzig des Buchh. Pöschel*



Sieber, Franz Wilhelm
 "Reise von Cairo nach Jerusalem", 1823"

KARTE VON JERUSALEM

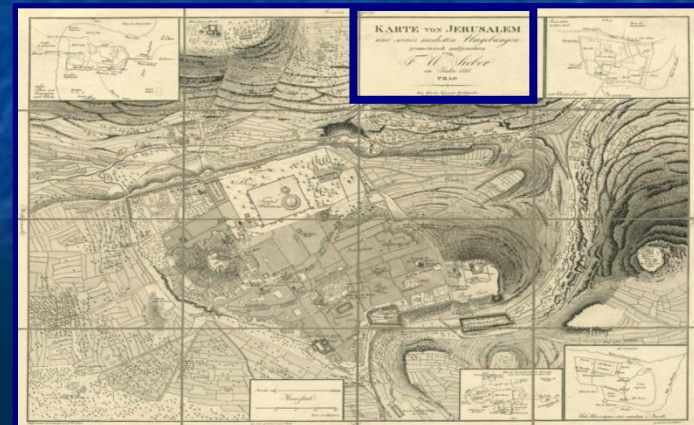
und seiner nächsten Umgebungen
geometrisch aufgenommen

VON
F. W. Sieber
im Jahre 1818.

PRAG

Bey Martin Neureuter Buchhändler.
Leipzig bey Fridrich Fleischer.

Sieber, Franz Wilhelm
Reise von Cairo"
"nach Jerusalem
Prag und Leipzig, 1823





Андрей Николаевич
Муравьев
(1806-1874)

первое издание - 1832



ПЛАНЪ ПЕРУСАЛИМА.

Замѣчанія.

Внутри Борода

1. Црква Св. Саввы
2. Црква Св. Петра
3. Црква Св. Павла
4. Црква Св. Андрея
5. Црква Св. Николая
6. Црква Св. Василия
7. Црква Св. Стефана
8. Црква Св. Мартина
9. Црква Св. Климента
10. Црква Св. Илариона
11. Црква Св. Григория
12. Црква Св. Кирилла
13. Црква Св. Леонтия
14. Црква Св. Василия Великаго
15. Црква Св. Григория Великаго
16. Црква Св. Иова
17. Црква Св. Василия Кесарскаго
18. Црква Св. Григория Невомида
19. Црква Св. Кирилла Александрскаго
20. Црква Св. Леонтия Великаго
21. Црква Св. Василия Милетскаго
22. Црква Св. Григория Паламаса
23. Црква Св. Кирилла Иерусалимскаго
24. Црква Св. Леонтия Мудраго
25. Црква Св. Василия Синайскаго
26. Црква Св. Григория Богослова
27. Црква Св. Кирилла Солунскаго
28. Црква Св. Леонтия Мудраго
29. Црква Св. Василия Синайскаго
30. Црква Св. Григория Богослова
31. Црква Св. Кирилла Солунскаго
32. Црква Св. Леонтия Мудраго
33. Црква Св. Василия Синайскаго
34. Црква Св. Григория Богослова
35. Црква Св. Кирилла Солунскаго
36. Црква Св. Леонтия Мудраго
37. Црква Св. Василия Синайскаго
38. Црква Св. Григория Богослова
39. Црква Св. Кирилла Солунскаго
40. Црква Св. Леонтия Мудраго
41. Црква Св. Василия Синайскаго
42. Црква Св. Григория Богослова
43. Црква Св. Кирилла Солунскаго
44. Црква Св. Леонтия Мудраго
45. Црква Св. Василия Синайскаго
46. Црква Св. Григория Богослова
47. Црква Св. Кирилла Солунскаго
48. Црква Св. Леонтия Мудраго
49. Црква Св. Василия Синайскаго
50. Црква Св. Григория Богослова
51. Црква Св. Кирилла Солунскаго
52. Црква Св. Леонтия Мудраго
53. Црква Св. Василия Синайскаго
54. Црква Св. Григория Богослова
55. Црква Св. Кирилла Солунскаго
56. Црква Св. Леонтия Мудраго
57. Црква Св. Василия Синайскаго
58. Црква Св. Григория Богослова
59. Црква Св. Кирилла Солунскаго
60. Црква Св. Леонтия Мудраго
61. Црква Св. Василия Синайскаго
62. Црква Св. Григория Богослова
63. Црква Св. Кирилла Солунскаго
64. Црква Св. Леонтия Мудраго
65. Црква Св. Василия Синайскаго
66. Црква Св. Григория Богослова
67. Црква Св. Кирилла Солунскаго
68. Црква Св. Леонтия Мудраго
69. Црква Св. Василия Синайскаго
70. Црква Св. Григория Богослова
71. Црква Св. Кирилла Солунскаго
72. Црква Св. Леонтия Мудраго
73. Црква Св. Василия Синайскаго
74. Црква Св. Григория Богослова
75. Црква Св. Кирилла Солунскаго
76. Црква Св. Леонтия Мудраго
77. Црква Св. Василия Синайскаго
78. Црква Св. Григория Богослова
79. Црква Св. Кирилла Солунскаго
80. Црква Св. Леонтия Мудраго
81. Црква Св. Василия Синайскаго
82. Црква Св. Григория Богослова
83. Црква Св. Кирилла Солунскаго
84. Црква Св. Леонтия Мудраго
85. Црква Св. Василия Синайскаго
86. Црква Св. Григория Богослова
87. Црква Св. Кирилла Солунскаго
88. Црква Св. Леонтия Мудраго
89. Црква Св. Василия Синайскаго
90. Црква Св. Григория Богослова
91. Црква Св. Кирилла Солунскаго
92. Црква Св. Леонтия Мудраго
93. Црква Св. Василия Синайскаго
94. Црква Св. Григория Богослова
95. Црква Св. Кирилла Солунскаго
96. Црква Св. Леонтия Мудраго
97. Црква Св. Василия Синайскаго
98. Црква Св. Григория Богослова
99. Црква Св. Кирилла Солунскаго
100. Црква Св. Леонтия Мудраго

246-247-248-249



Замѣчанія.

Вни Борода

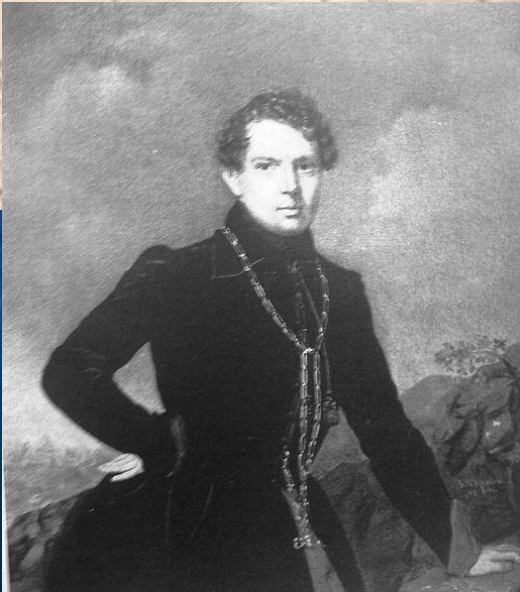
- A. Црква Св. Саввы
- B. Црква Св. Петра

F 86
23

ПЪТШЕСТВІЕ
КО
СВЯТЫМЪ МѢСЯЦАМЪ.

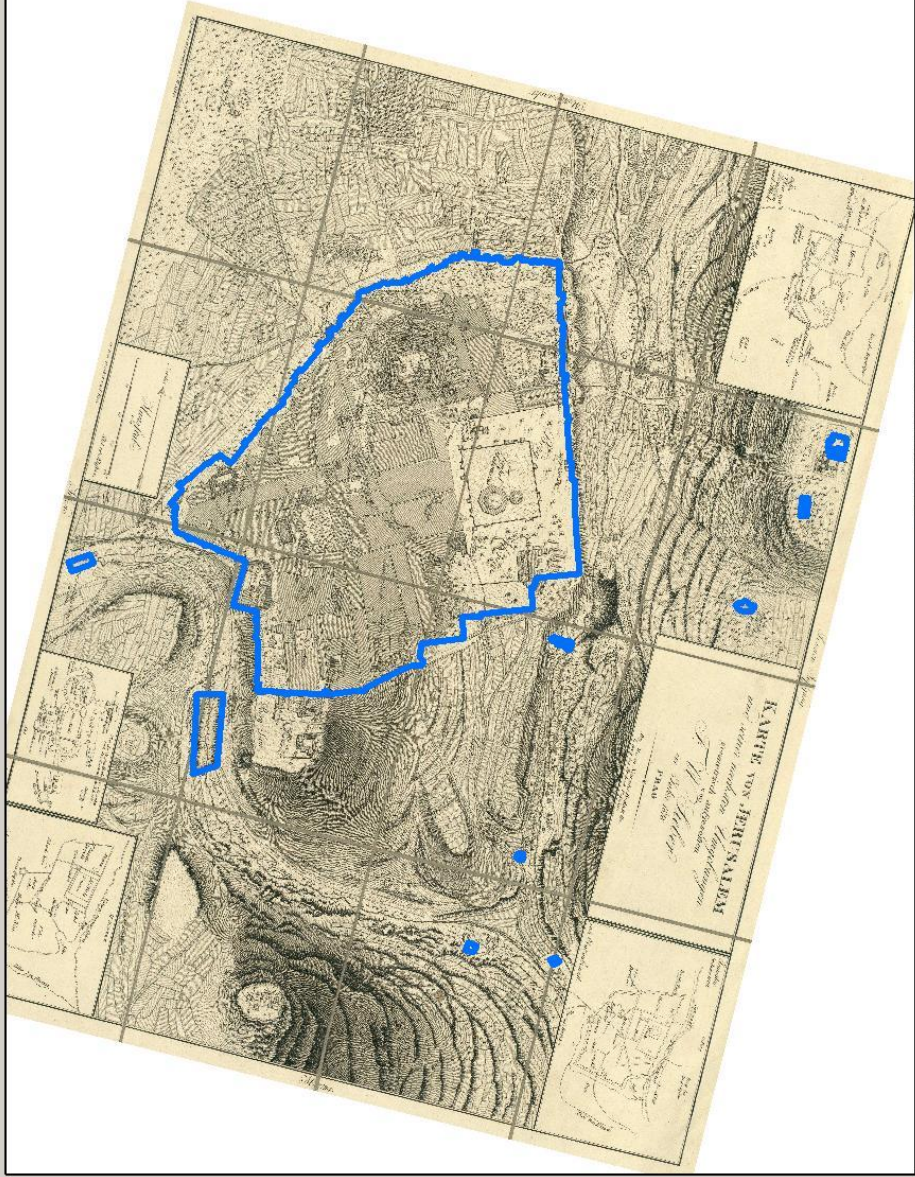


св. гроба.



Андрей Николаевич
Муравьев
(1806-1874)

первое издание - 1832





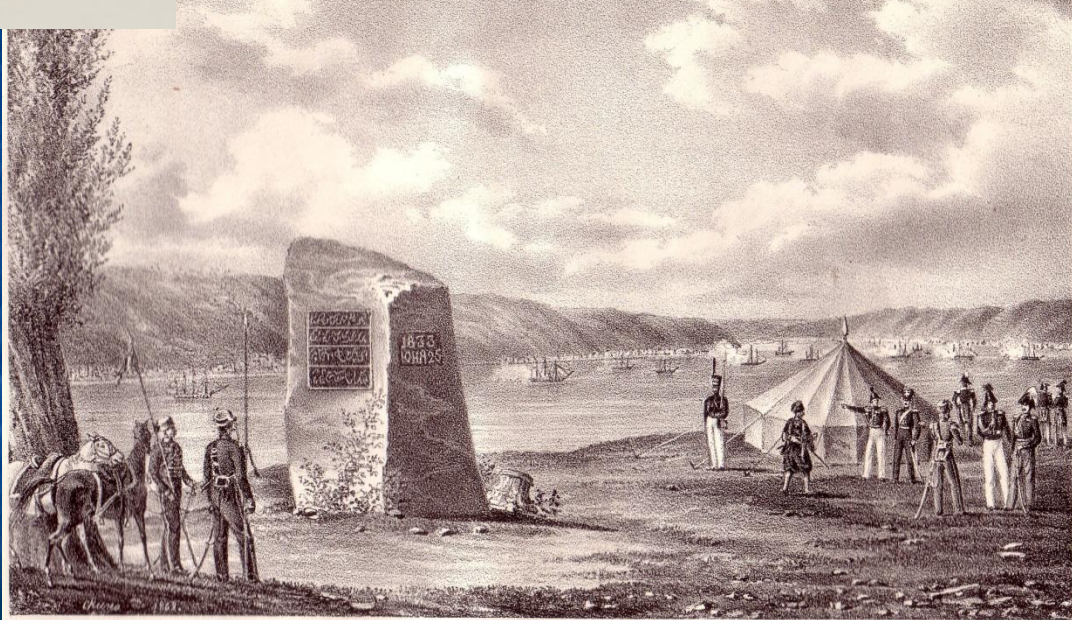
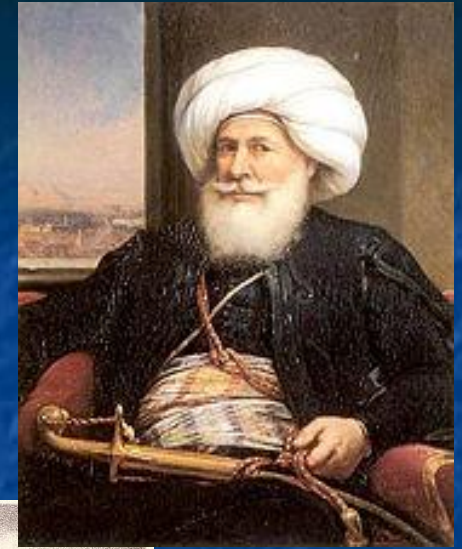
Mohammed Ali



Лит. Бейрутск. Мостка.

Лит. Эронск.

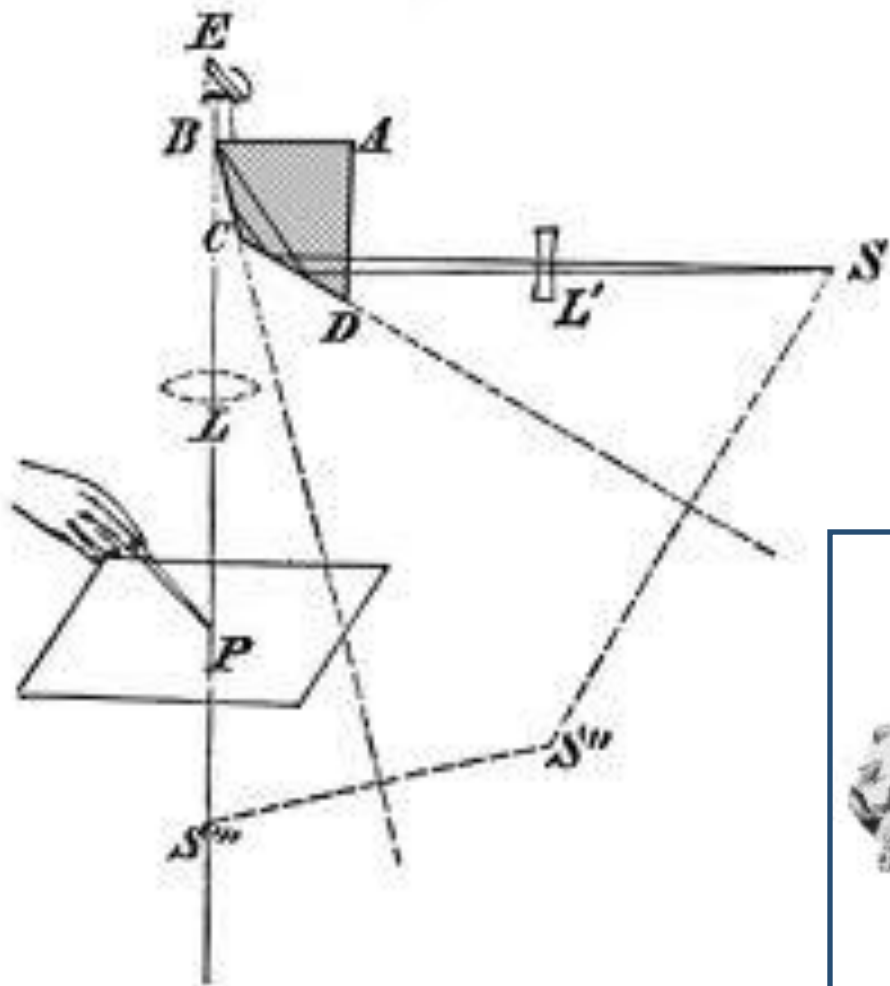
Врагъ Акрѣ.
Маѣ 27 1832 года.

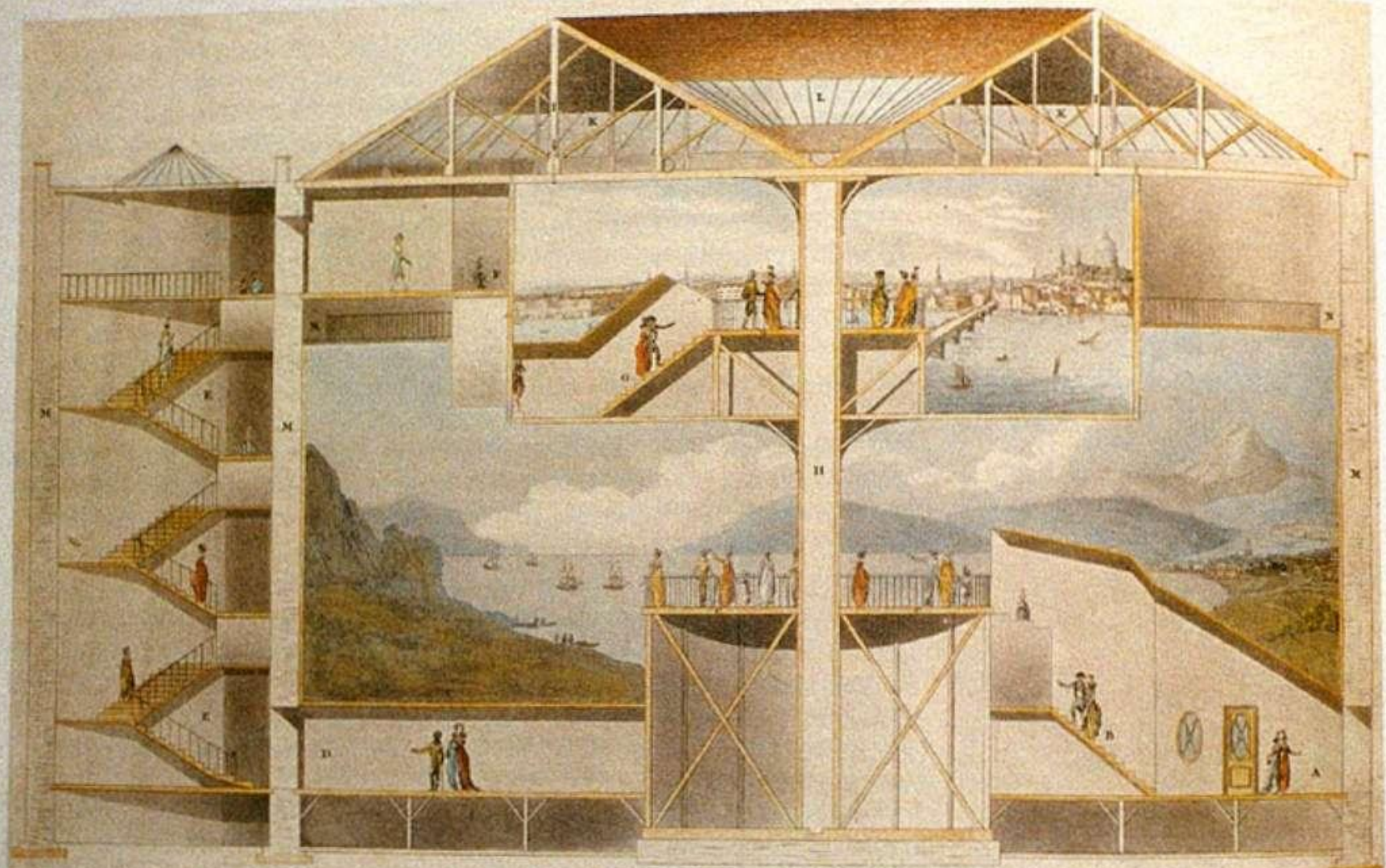


Лит. Бауманъ Москва.

Печ. Эргодъ.

*Памятникъ воздвигнутый на Азіатскомъ берегу Гюсфора,
въ ознаменованіе пребыванія на ономъ Россійскихъ войскъ.*



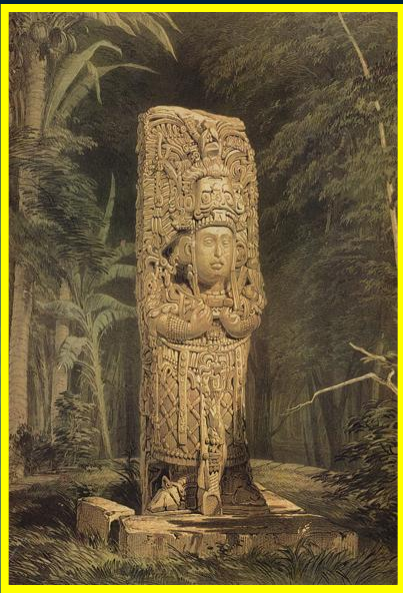


*Section of the Rotunda, Leicester Square, in which is exhibited the PANORAMA.
 Coupe de la Rotonde dans laquelle est l'exhibition du PANORAMA, Leicester Square.*

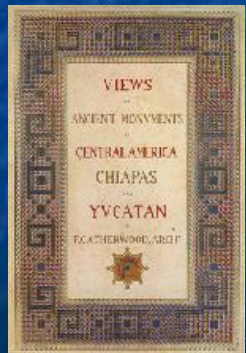
Designed by Mitchell.

Edw. Wallis delin.

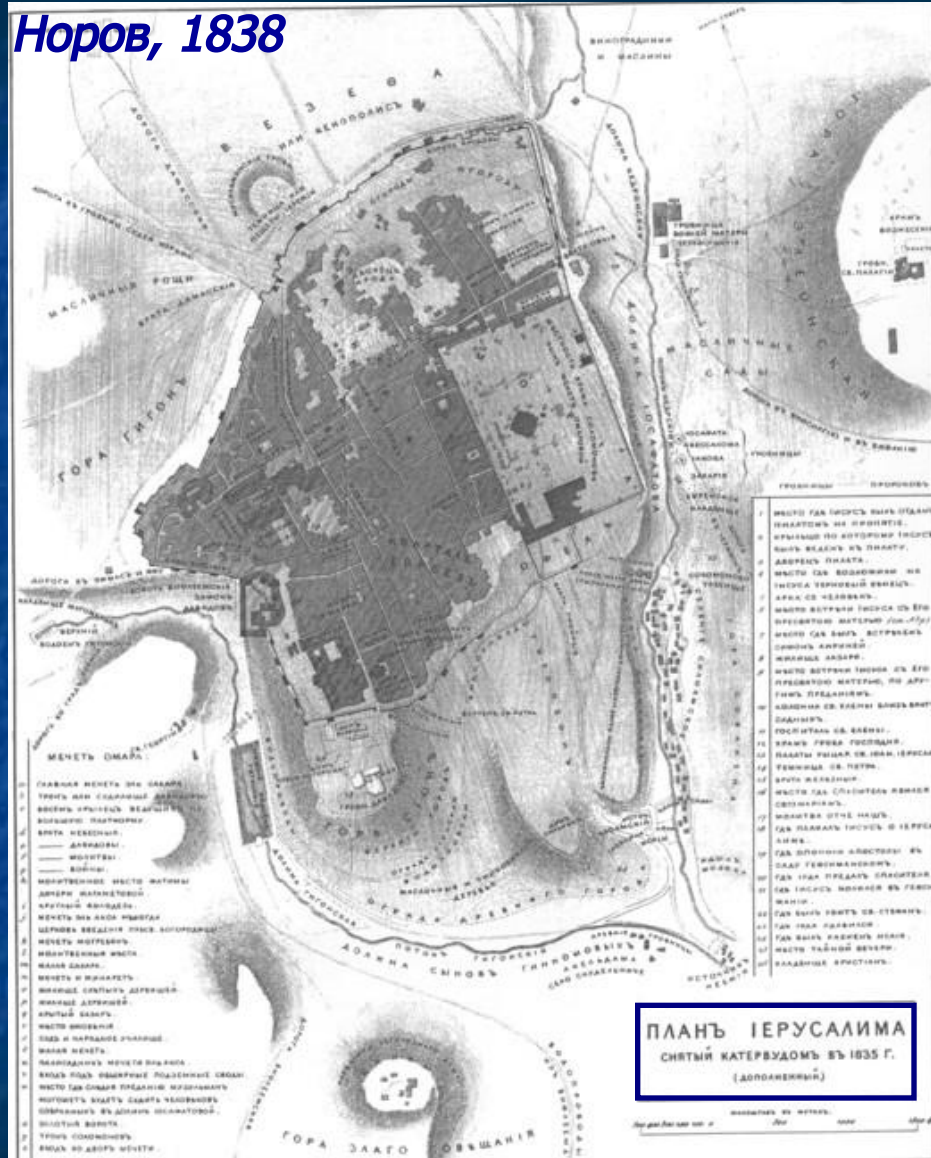
29 Section of the Rotunda, Leicester Square 1801
 ROBERT MITCHELL



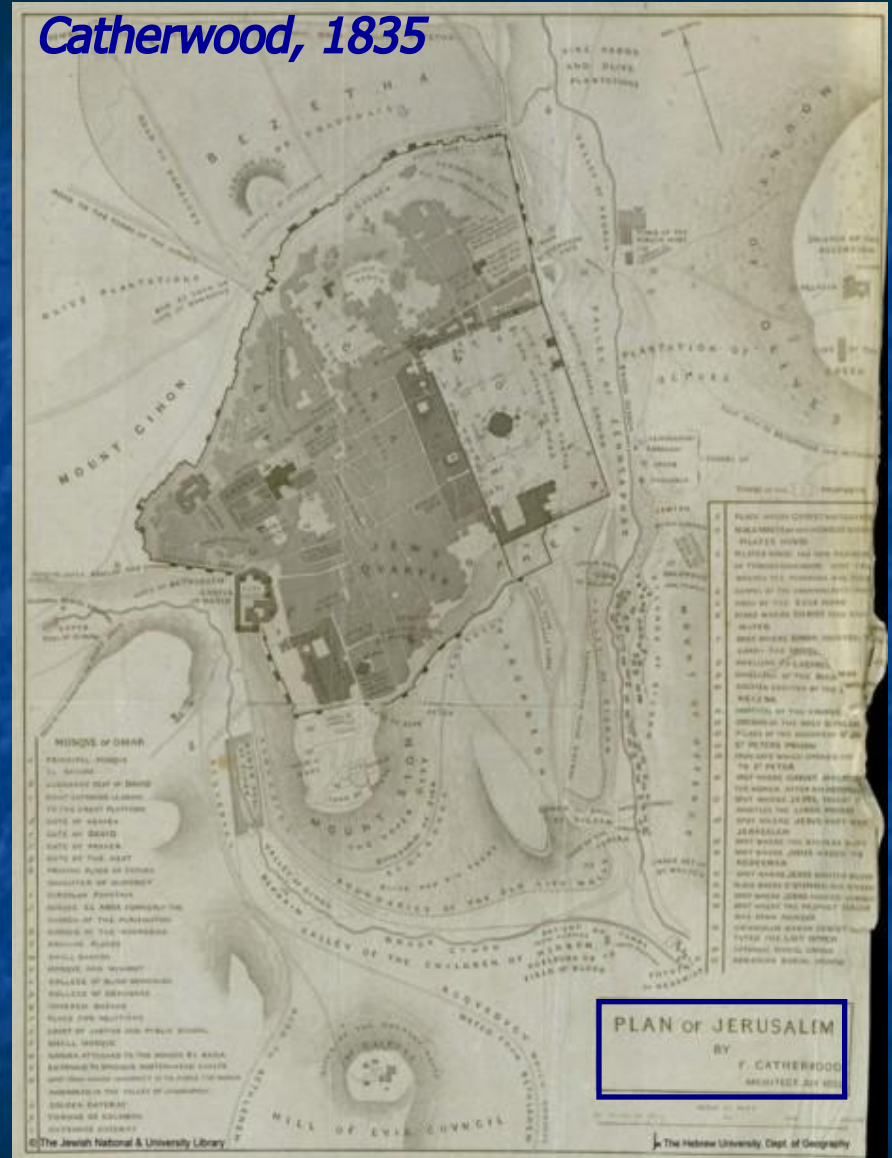
Views of Ancient Monuments in Central America, Chiapas and Yucatan, 1844



Норв, 1838

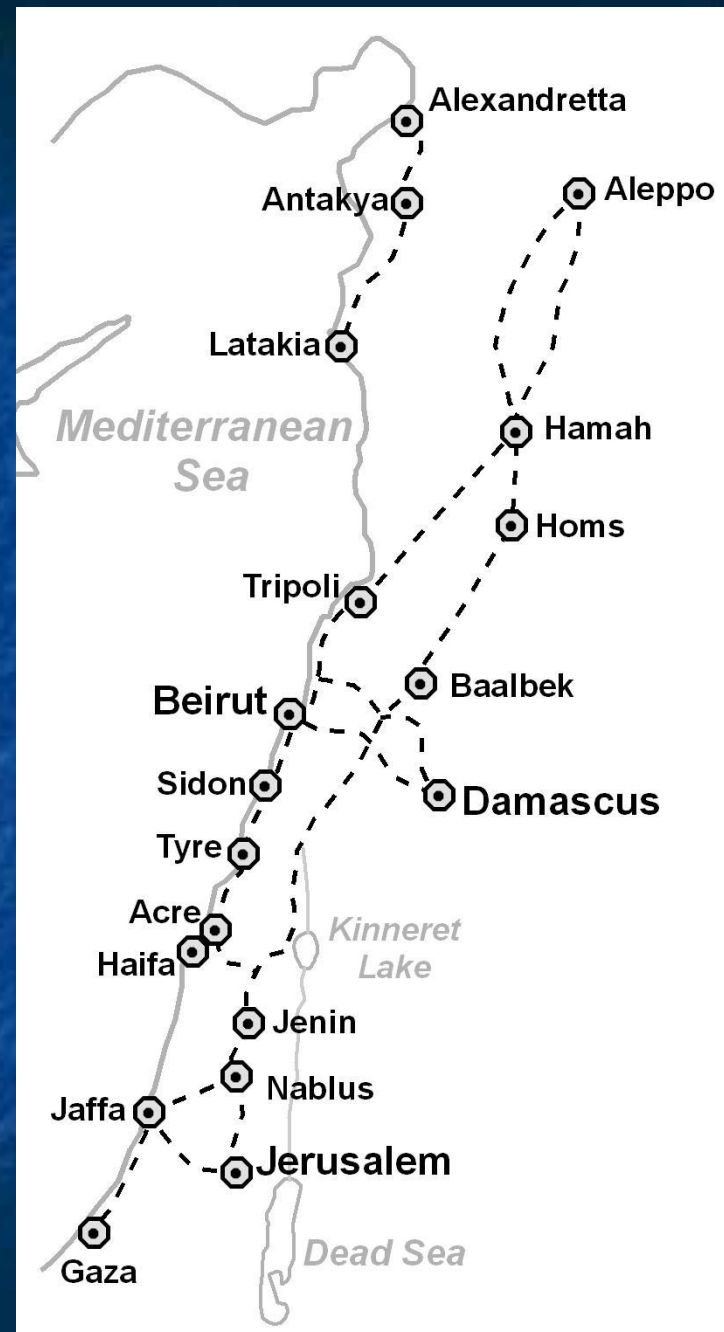
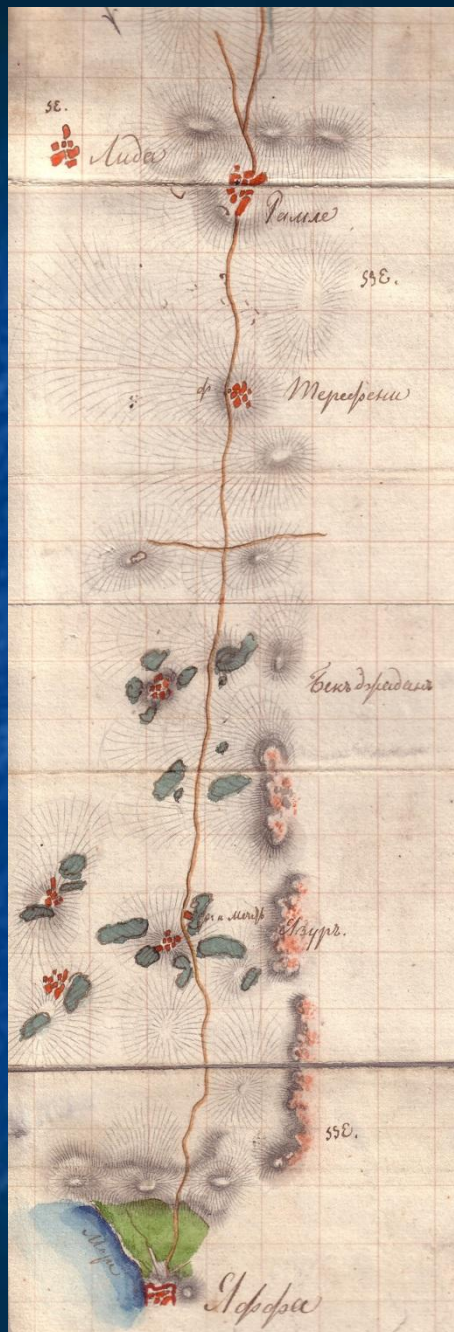


Catherwood, 1835

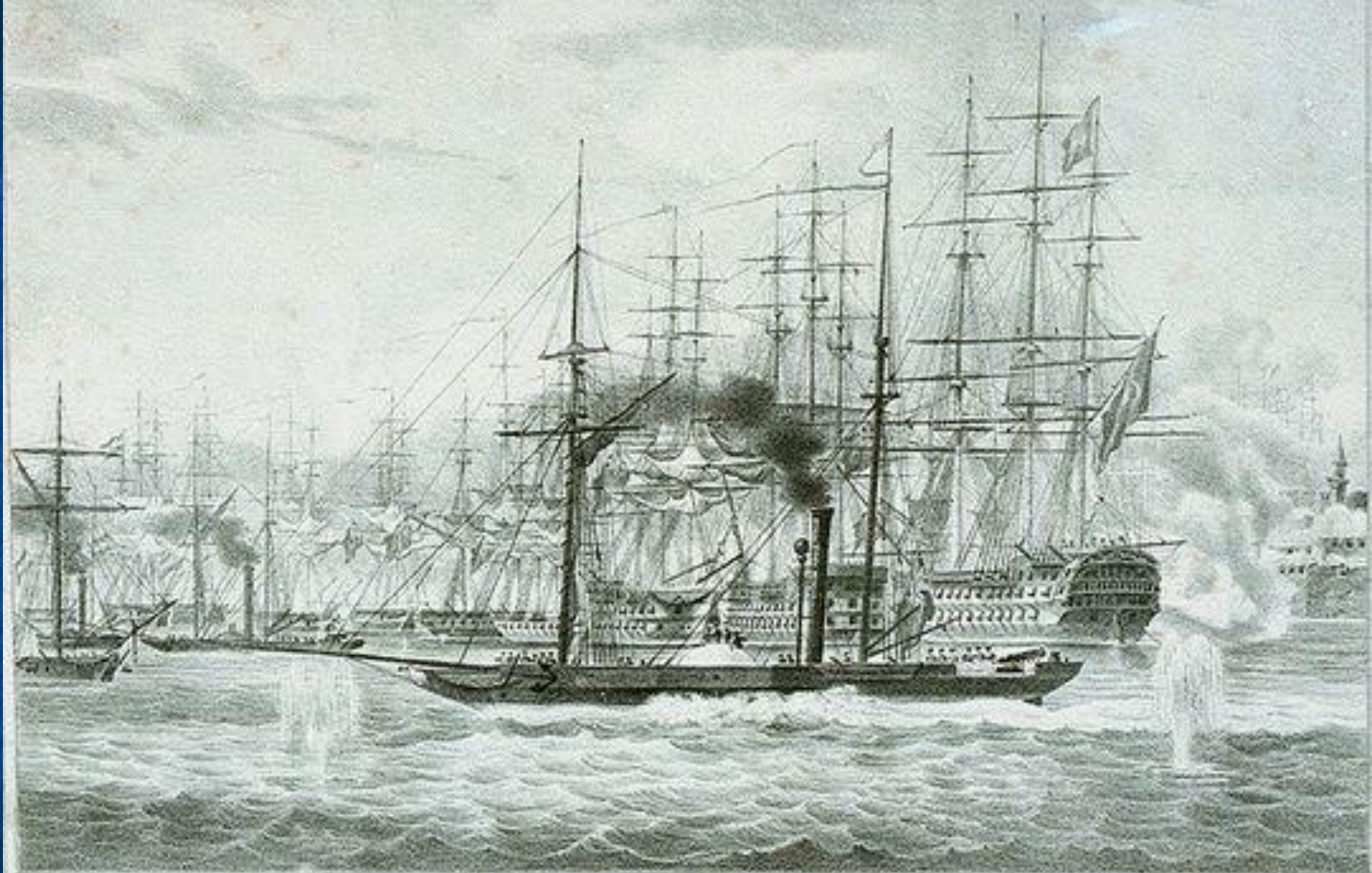


ПЛАНЪ ИЕРУСАЛИМА
 СИТИЙНЪ КАТЕРВУДОМЪ ВЪ 1835 Г.
 (ДОПОЛНЕНІИ)

PLAN OF JERUSALEM
 BY
 F. CATHERWOOD
 ARCHT. BY HISSELF

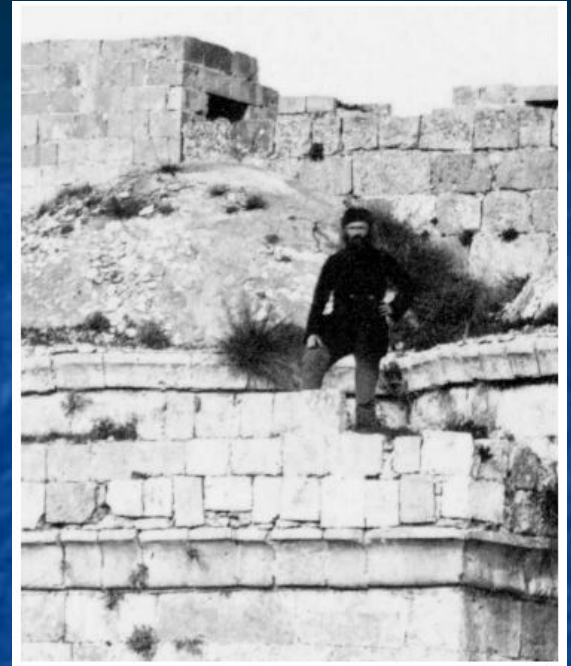
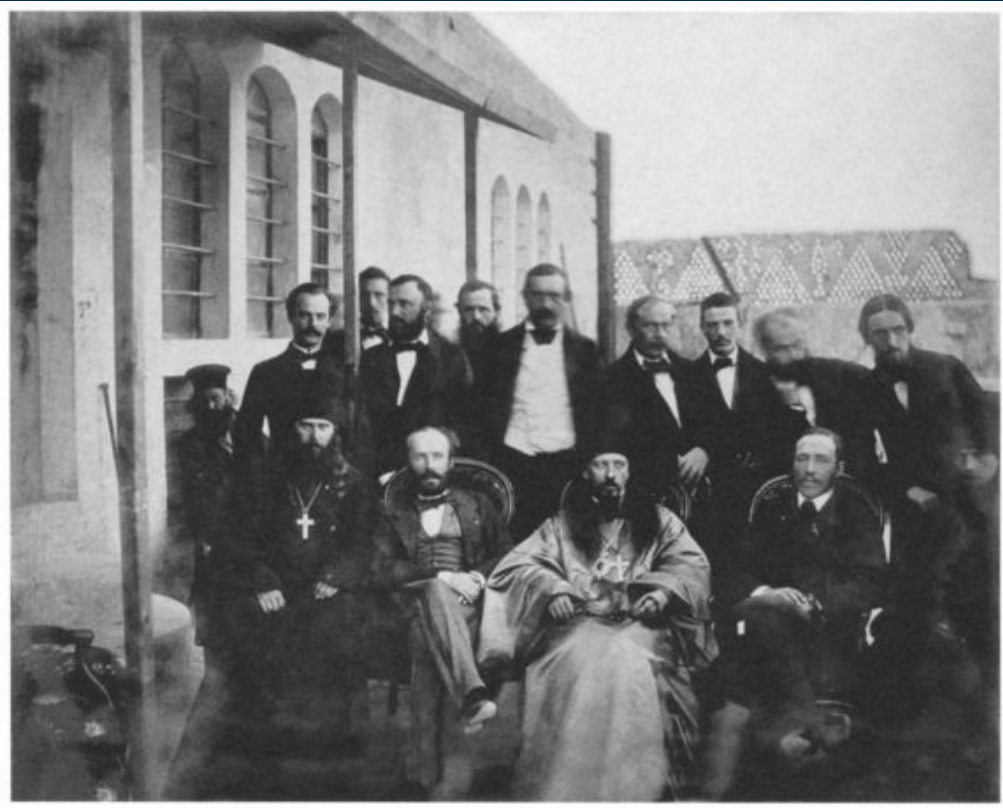


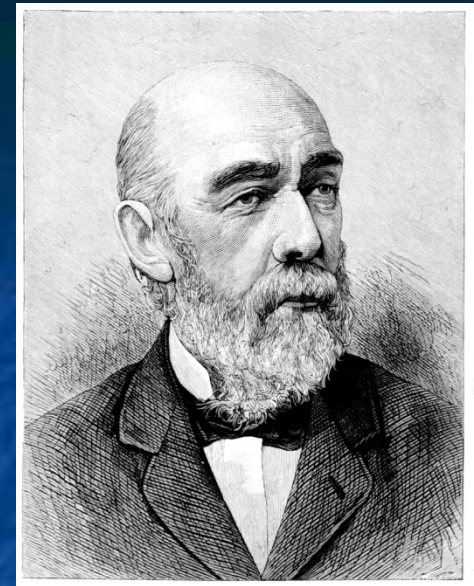
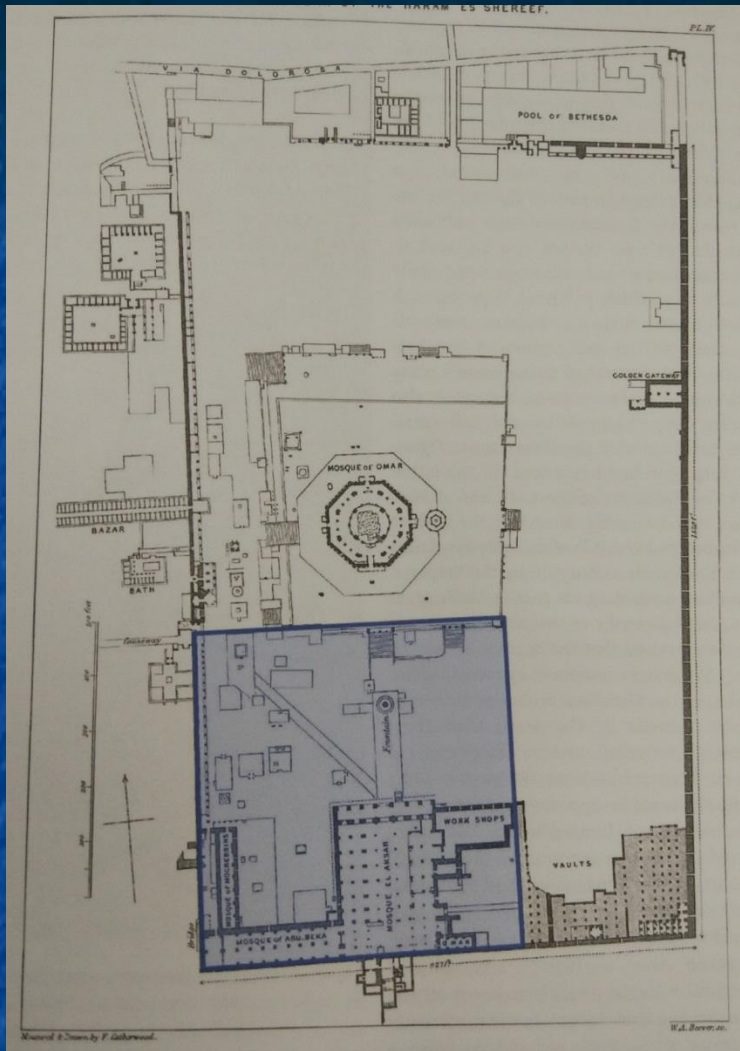




Spain 20 *Alba de Carrizosa 26* *Cayapo 126* *Talis 26* *Castor 26* *Hazard 11* *Edinburgh 12* *Beaver 12* *Miss 25* *Great Repulse 50*
Spain *Honour* *Flourant*

BATTLE OF ST JEAN D'ACRE.





**James Fergusson
(1808 –1886)**

AN ESSAY
ON
THE ANCIENT TOPOGRAPHY
OF
JERUSALEM,
WITH RESTORED PLANS OF THE TEMPLE, &c.
AND
PLANS, SECTIONS, AND DETAILS
OF
THE CHURCH BUILT BY CONSTANTINE THE GREAT
OVER THE HOLY SEPULCHRE,
NOW KNOWN AS THE MOSQUE OF OMAR,
And other Illustrations.

BY
JAMES FERGUSSON, F.R.S.

AUTHOR OF THE 'ILLUSTRATIONS OF THE ROYALTY TEMPLE OF INEA,' AND 'PICTURESQUE
ILLUSTRATIONS OF ANCIENT ARCHITECTURE IN EUROPE.'

London:
JOHN WEALE, 59, HIGH HOLBORN.
MDCCLXVII.

JERUSALEM EXPLORED

BEING

A Description of the Ancient and Modern City,

WITH NUMEROUS ILLUSTRATIONS

CONSISTING OF VIEWS, GROUND PLANS, AND SECTIONS,

BY ERMETE PIEROTTI,

DOCTOR OF MATHEMATICS, AND ARCHITECT-ENGINEER, CIVIL AND MILITARY, TO HIS EXCELLENCY SURRAYA PASHA

TRANSLATED BY

THOMAS GEORGE BONNEY, M.A., F.G.S.

FELLOW OF ST JOHN'S COLLEGE, CAMBRIDGE.

VOLUME II.—PLATES.



LONDON: BELL AND DALDY, FLEET STREET.

CAMBRIDGE: DEIGHTON, BELL, AND CO.

M.DCCC.LXIV.

[The right of Translation is reserved.]

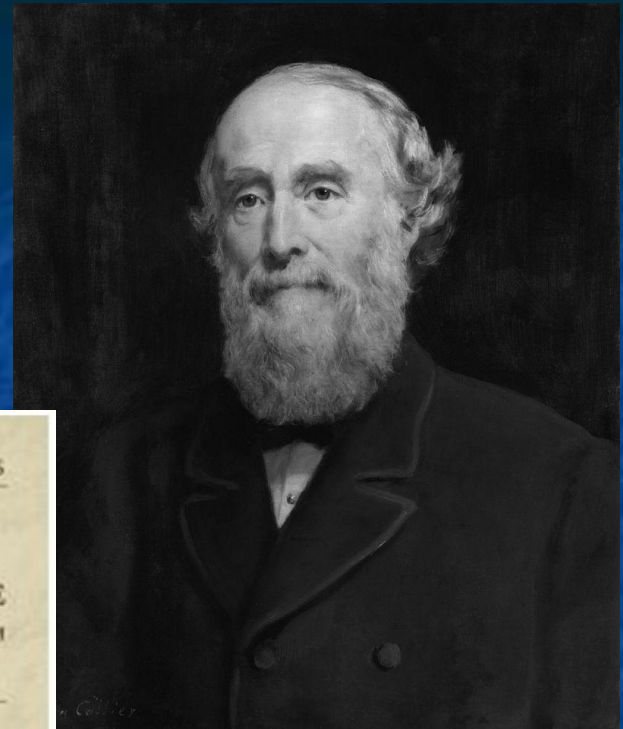
CLASSIC REPRINT SERIES

DR. PIEROTTI AND HIS ASSAILANTS, OR A DEFENCE OF "JERUSALEM EXPLORED"

Being the Substance of a Paper, Read Before the
Oxford Architectural Society at Their Annual Meeting
June 6, 1864, and Now Published by Their Request

by
George Williams

Forgotten Books



**Sir George Williams
(1821–1905)**

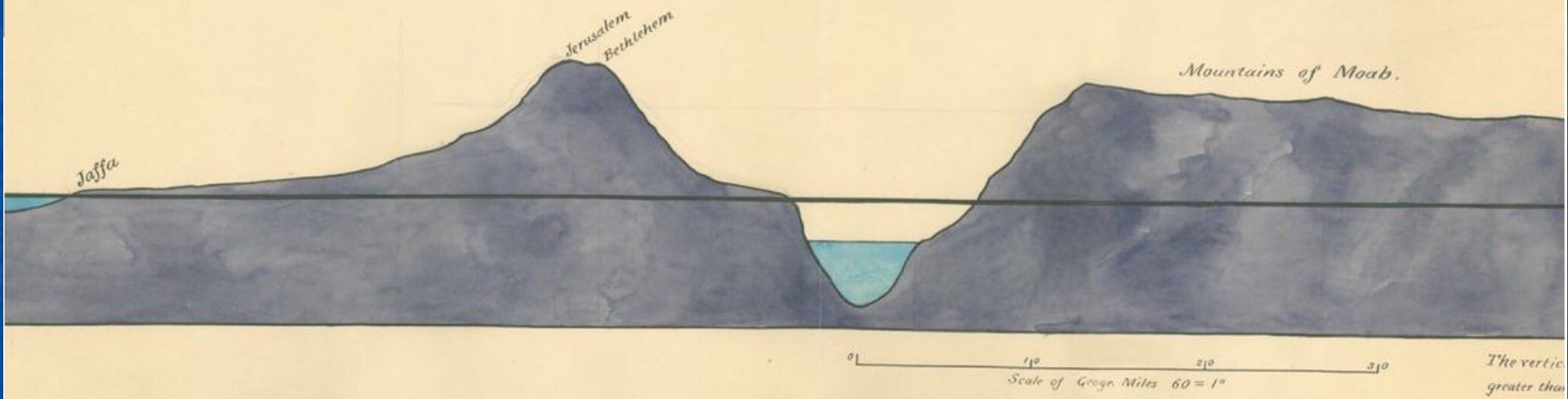


1864-65

“Much as I had heard and read about the country, I was quite unprepared for the wild desolation of the scene around us. It is like nothing else on earth, and baffles all description; hills that were once covered with vineyards are now nothing but a mass of rock and rubbish. We were passing close to the valley of Ajalon, where Joshua commanded the sun to stand still, and soon came to Kirjath Jearim, where the road became even more wildly desolate, until we reached the summit of the last hill, and Jerusalem lay before us. I must say my first feeling was one of disgust, for, right in front, and hiding a great part of the city from this point of view, the Russians have constructed an immense pile of ugly buildings, almost a town in itself, outside the walls.







Map 1865

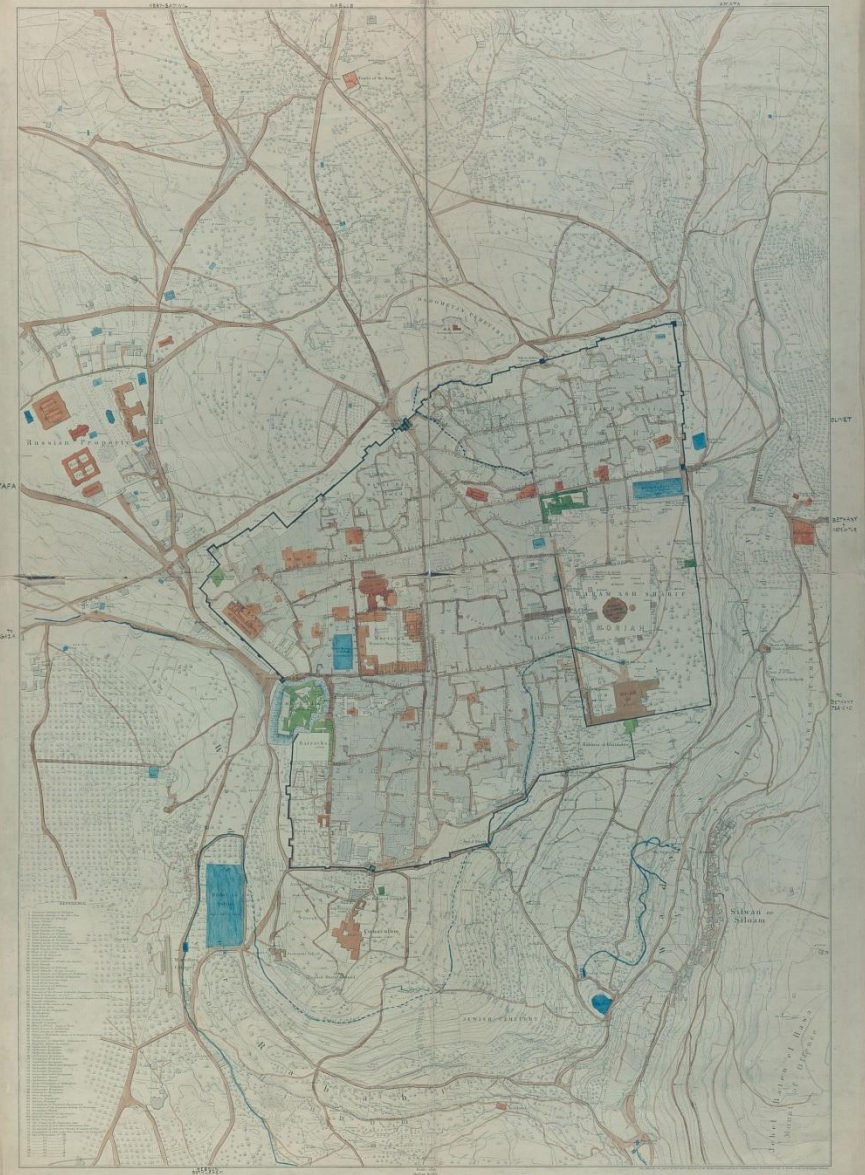
Март 1865



ORDNANCE SURVEY OF JERUSALEM.

CAPTAIN GEORGE H. WILSON R.E.

AND COLONEL SIR HENRY AMEEL R.E. SURVEYORS GENERAL OF THE ORDNANCE SURVEY.



The Palestine Exploration Fund (PEF)

- 12 мая 1865
встреча оргкомитета
- 22 июня 1865
первое заседание

THE
PALESTINE EXPLORATION FUND.

PATRON
HER MAJESTY THE QUEEN.

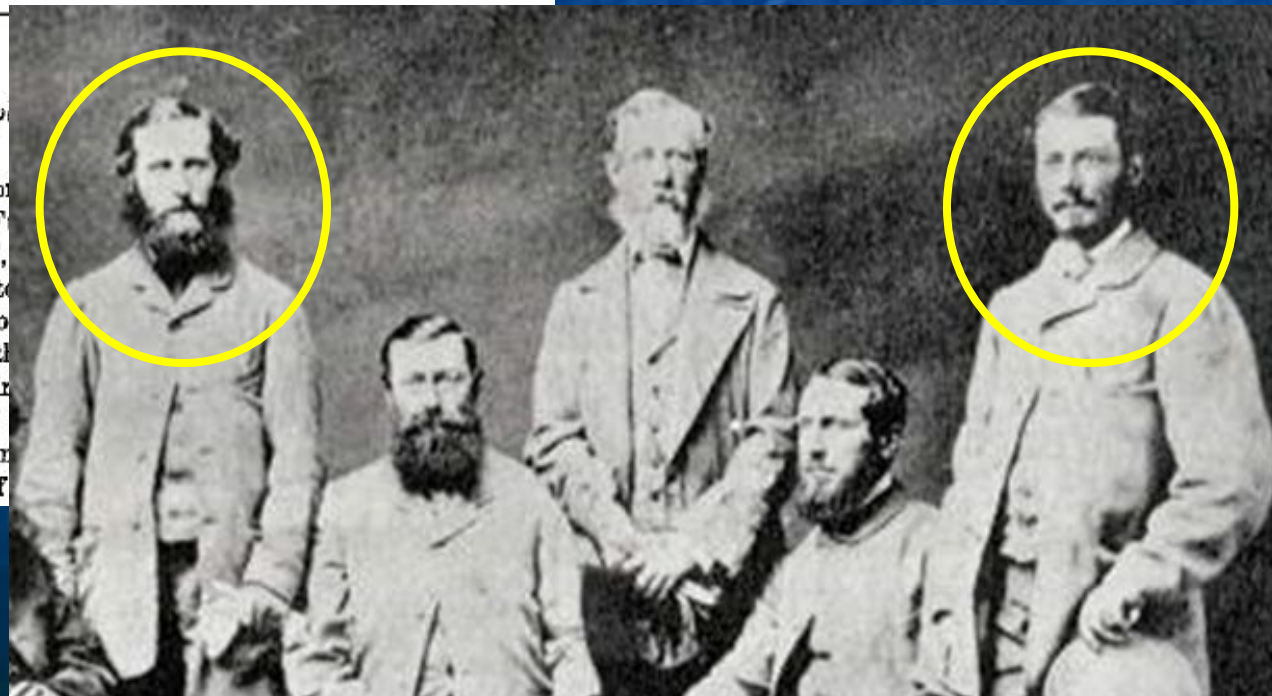
PRELIMINARY REPORT OF CAPTAIN G. W. WILSON, ROYAL
ENGINEERS, ON THE RESULT OF THE FIRST EXPE-
DITION UNDER HIS CHARGE.—1865-6.

GEORGE GROVE, Esq.,
Hon. Secretary, Palestine Exp

SIR,

I have the honour to sub-
mittee of the Palestine Exploration F
expedition undertaken by the Fund,
letters addressed to you from time to
report, containing a detailed descriptio
ing in one document the contents of t
accompany the maps and plans now in

The expedition, which consisted of
Phillips, R.E., and myself, left Englan
and arrived at Beyrout on the 23rd of



1865-66



THE SINAI SURVEY PARTY, 1868.

HASSAN.

SALEM.

Mr E. H. PALMER.

Captain WILSON.

Mr WYATT.

Captain PALMER.

Rev. F. W. HOLLAND.

1867-70



UNDERGROUND JERUSALEM:

AN ACCOUNT OF SOME OF
THE PRINCIPAL DIFFICULTIES ENCOUNTERED IN ITS
EXPLORATION AND THE RESULTS OBTAINED.

WITH A PREFERENCE
to the Bible Club
AN EXPEDITION THROUGH THE MOUNTAIN VALLEY AND A
TRIP TO THE SAMARIANS.

BY CHARLES WARREN,

OFFICER IN THE ARMY OF ROYAL ENGINEERS, F.O.S., F.R.S., ARMS, 1861, &c.,
LATE IN CHARGE OF THE EXCAVATIONS AT THE MOUNT SAIN.

WITH ILLUSTRATIONS.



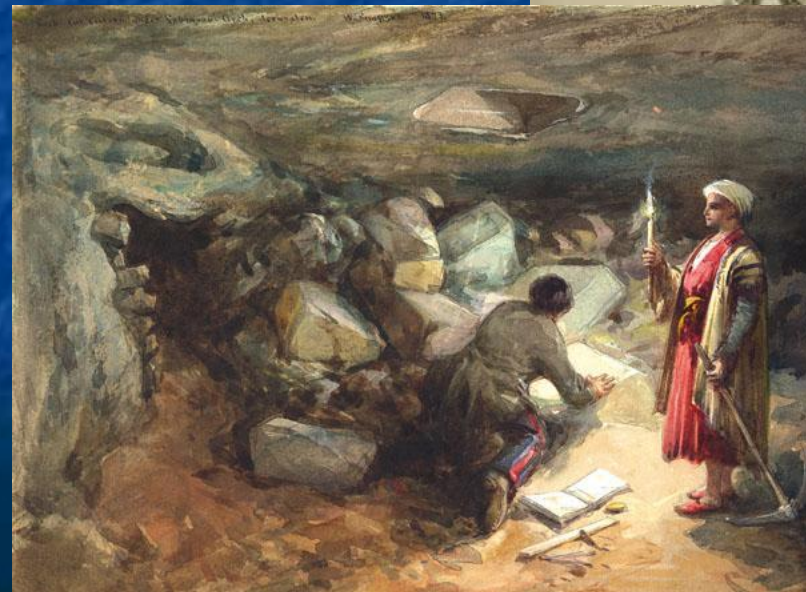
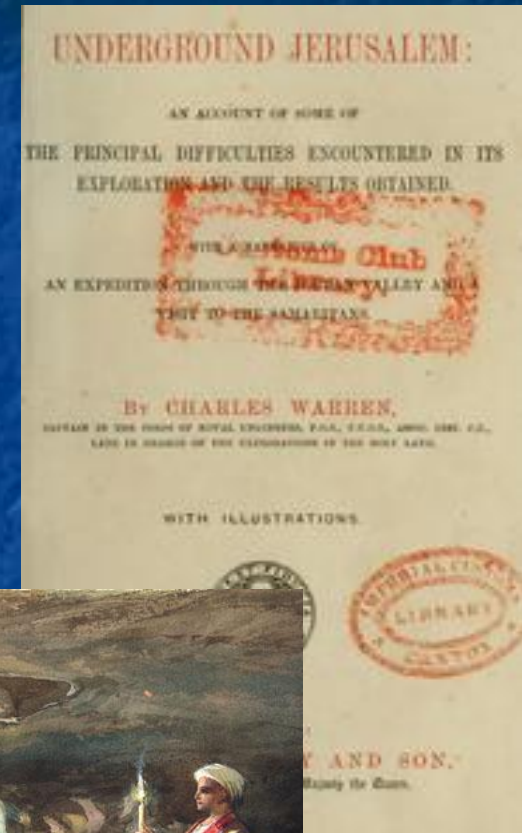
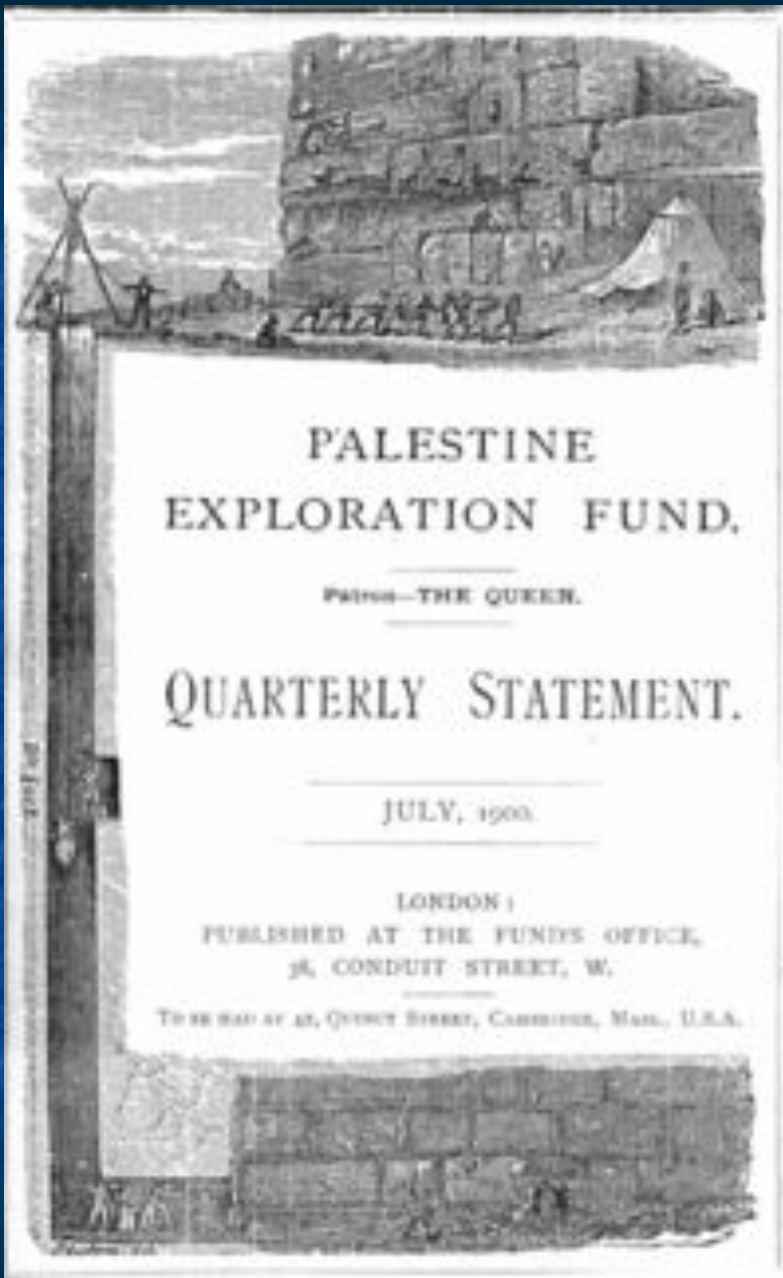
LONDON:

RICHARD BENTLEY AND SON,

Printers in Ordinary to Her Majesty the Queen.

1870

1867-70



58th Venice Biennale 2019



- Giardini**
- | | | |
|-----------------------------------|----------------------|--------------------|
| 1 May You Live in Wonderful Times | 13 Germany | 20 Denmark |
| 2 The Netherlands | 14 Canada and Brazil | 21 France/Poland |
| 3 Belgium | 15 Slovenia | 22 Hungary/England |
| 4 Spain/Spain | 16 Australia | 23 South Korea |
| 5 Switzerland | 17 Austria/Australia | 24 South Africa |
| 6 Venezuela | 18 Singapore | 25 Singapore |
| 7 Venezuela | 19 United Kingdom | 26 Portugal/Spain |
| 8 Venezuela | 20 United States | 27 South Korea |
| 9 Venezuela | 21 United States | 28 Poland/Poland |
| 10 Venezuela | 22 United States | 29 Romania |
| 11 Canada/Canada | 23 United States | 30 Armenia |
| 12 United States | 24 United States | 31 Thailand |
| | 25 United States | |
| | 26 United States | |
| | 27 United States | |
| | 28 United States | |
| | 29 United States | |
| | 30 United States | |
| | 31 United States | |

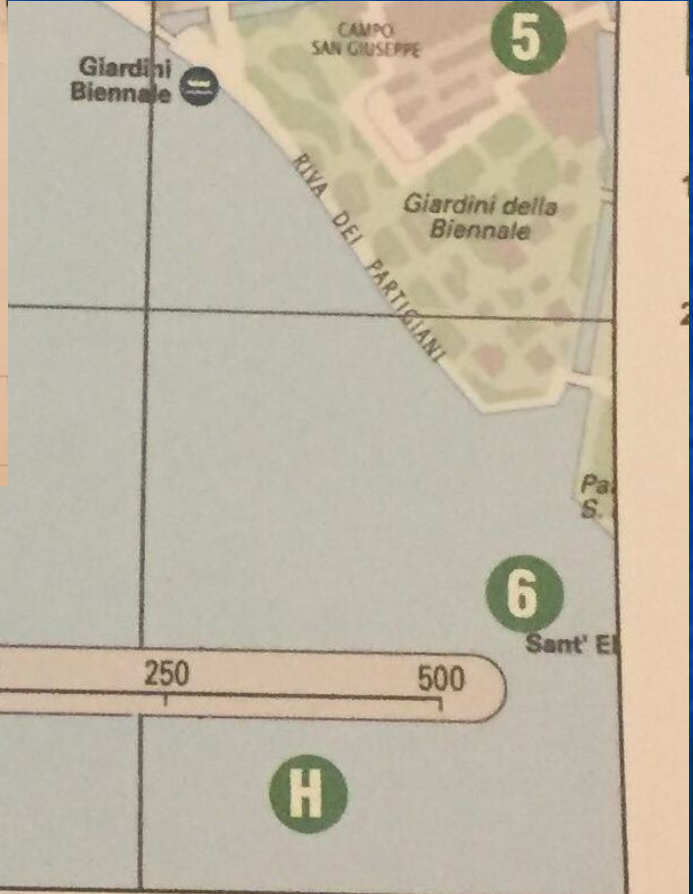


- Arsenale**
- | | | |
|-----------------------------------|----------------------|--------------------|
| 1 May You Live in Wonderful Times | 13 Germany | 20 Denmark |
| 2 The Netherlands | 14 Canada and Brazil | 21 France/Poland |
| 3 Belgium | 15 Slovenia | 22 Hungary/England |
| 4 Spain/Spain | 16 Australia | 23 South Korea |
| 5 Switzerland | 17 Austria/Australia | 24 South Africa |
| 6 Venezuela | 18 Singapore | 25 Singapore |
| 7 Venezuela | 19 United Kingdom | 26 Portugal/Spain |
| 8 Venezuela | 20 United States | 27 South Korea |
| 9 Venezuela | 21 United States | 28 Poland/Poland |
| 10 Venezuela | 22 United States | 29 Romania |
| 11 Canada/Canada | 23 United States | 30 Armenia |
| 12 United States | 24 United States | 31 Thailand |
| | 25 United States | |
| | 26 United States | |
| | 27 United States | |
| | 28 United States | |
| | 29 United States | |
| | 30 United States | |
| | 31 United States | |

- Legenda**
- 1-5: Giardini Biennale
 - 6-10: Giardini della Biennale
 - 11-15: Esposizione
 - 16-20: Esposizione
 - 21-25: Esposizione
 - 26-30: Esposizione
 - 31: Esposizione

LAVAZZA
TORINO, ITALIA, 1895

LAVAZZA
TORINO, ITALIA, 1895



ORDNANCE SURVEY OF JERUSALEM.

CAPTAIN CHARLES W. WILSON R.E.
COLONEL SIR HENRY JAMES R.E. DIRECTOR OF THE ORDNANCE SURVEY.

