

Тема: **Electrical Engineering – Электротехника**

Лексика: термины по теме

Чтение: текст Deadline changes

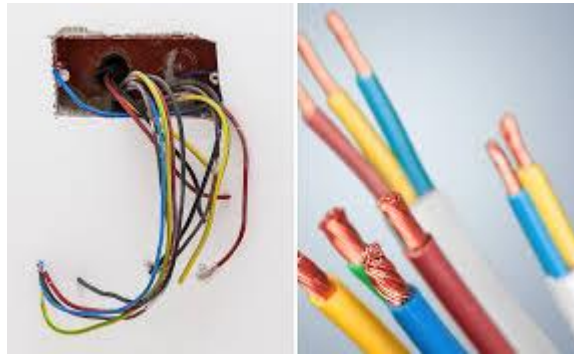
Диалоги по теме



- What is electrical engineering?
- What products do electrical engineers make?

Electrical engineering is one of the newer branches of **engineering**, and dates back to the late 19th century. It is the branch of **engineering** that deals with the technology of electricity. **Electrical engineers** work on a wide range of components, devices and systems, from tiny microchips to huge power station generators.

What **does an Electrical Engineer do?** **Electrical engineers** work on a variety of projects, such as computers, robots, cell phones, cards, radars, navigation systems, wiring and lighting in buildings and other kinds of **electrical** systems.



Wirings

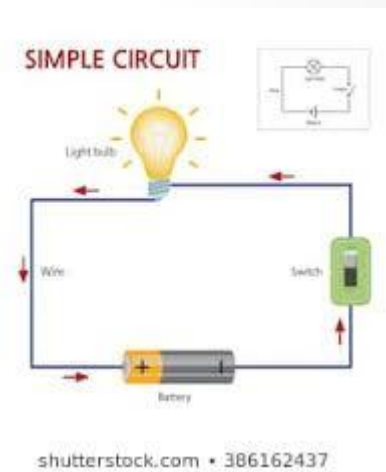
navigation systems

radars

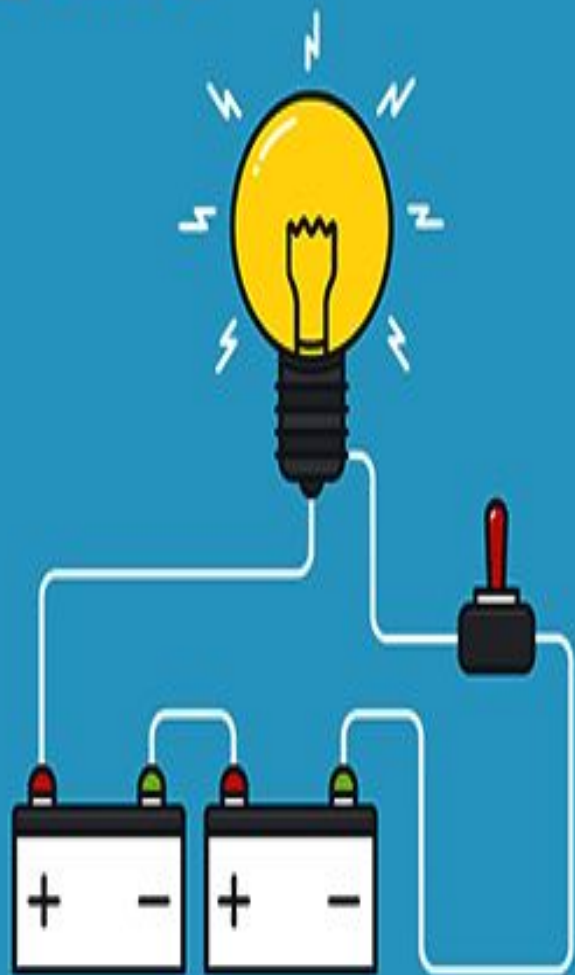


Ознакомьтесь с новыми словами

Circuit(цепь), **integrated circuit** (микросхема, чип), **input voltage, watt, power supply**(источник питания), **DVD player, staff, circuit card assemblies**(плата), **input voltage, output voltage, deadline**



DIFFERENCE BETWEEN WATTS AND VOLTS



WATTS

- The method of measuring the rate of energy transfer.
- Power is measured in wattage [or watts]
- Watts are the products of voltage and current. For example, the more wattage, the brighter a light.

VOLTS

- A force that makes electricity move.
- The potential difference between two points in a circuit is measured by voltage. Voltage is measured in volts [V]
- if you switch off a light, voltage is still in the energized part of the circuit

Read the text:

From: Ted Everett

To: Brian Smith

Subject: Deadline changes

Brian,

The deadline for the model GR-7 DVD player project in next month. As a result, we're delaying production on the GR-2.2 model. We need to adjust our production of some **components**.

Fortunately, both models use many of the same part. Keep making **circuit card assemblies** for both. However, the models use the different **power supplies**. Stop all production of GR-2.2 power supplies and focus on creating GR-7 power supplies.

Remember to make the necessary adjustments. The GR-7 power supplies require an **input voltage** of 120 **volts** and an **output voltage** of 5 volts. These are slightly higher than the settings for the GR-2.2 power supplies.

Remember the **output power**, too. The GR-7 power supplies must produce 27 **watts** – the GR-2.2 only produce 24 watts.

Please inform the rest of the staff of the change.

Ted Everett

Electrical Engineering Supervisor

Read this e-mail from a supervisor. Then, choose the correct answers.

What is the e-mail about?

- a) changing production orders
- b) canceling GR-7 production
- c) using GR-7 components in the GR-2.2
- d) the difference between input and output voltage

Which of the following is NOT true?

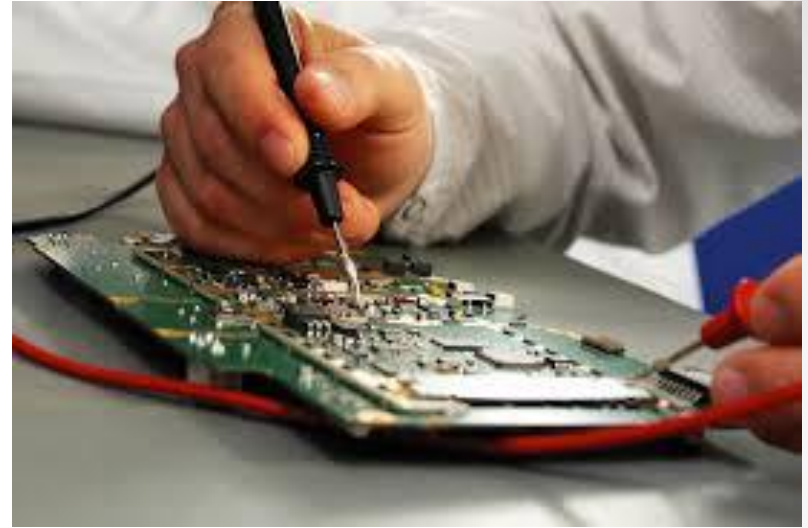
- a) The GR-2.2 and GR-7 use the same power supply
- b) The circuit card assemblies can be used in both models
- c) The GR-2.2 has a lower input voltage than the GR-7
- d) The GR-7 has a greater output power than the GR-2.2

What can you infer about the company?

- a) It has over 120 employees
- b) Its DVD players have incorrect output voltages
- c) It has different deadlines for the different models
- d) It purchases power sources from manufactures

Match the words with the definitions

- 1) Volt
- 2) Output voltage
- 3) Watt
- 4) Output power
- a) Measure of electrical power
- b) Measure of electrical potential
- c) Voltage put out by a device
- d) Watts put out by a device



Use the words from the bank to fill in the blanks

Input voltage **power supply** **components**

1. The _____ directs electricity to the disc drive
2. This TV needs a minimum _____ to work
3. The factory assembles the different _____

Listen again and complete the conversation

Manager: Valerie, can I talk to you for a moment

Engineer: Of course, Mr. Smith. What's up?

Manager: We're changing the deadlines on the GR-7 and GR-2.2 DVD player projects

Engineer: Really? Aren't we trying to finish both at the same time?

Manager: The GR-7 models are due next month. So we're pushing back GR-2.2s

Engineer: Okay. I'll stop production on all GR-2.2 components

Manager: No, don't do that. The same circuit card assemblies work in both products.

Engineer: Oh, that's right. We just need to hold off on GR-2.2 power supply then.

Listen to a conversation between a manager and an engineer. Mark the following statements as true (T) or false(F).

1. The man decides not to change the deadline
2. The company will stop production of all GR-2.2 parts
3. The woman is creating a new power supply.

Homework:

- Выучить диалог
- Пройти тестирование по данной теме

100 W

