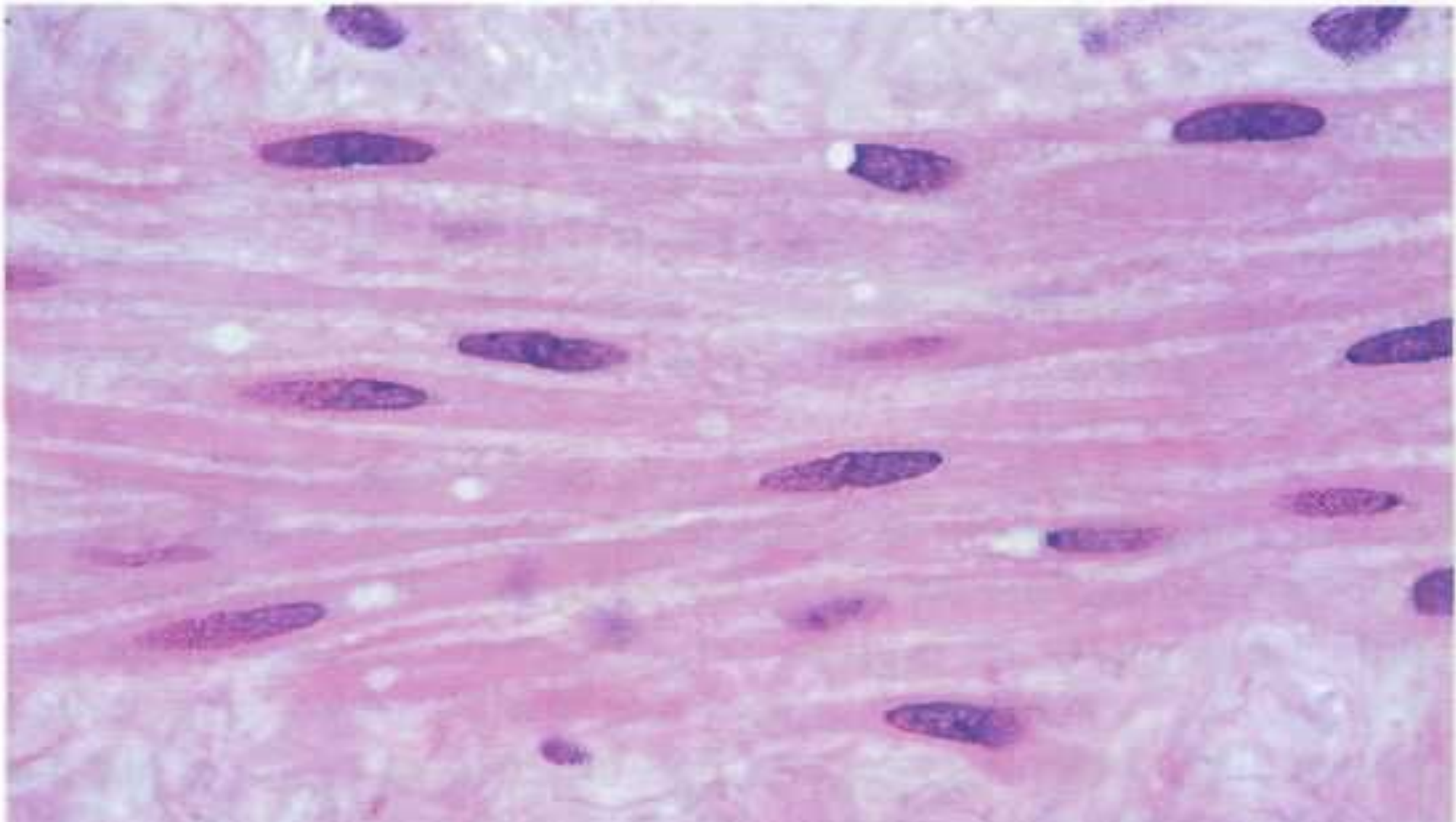
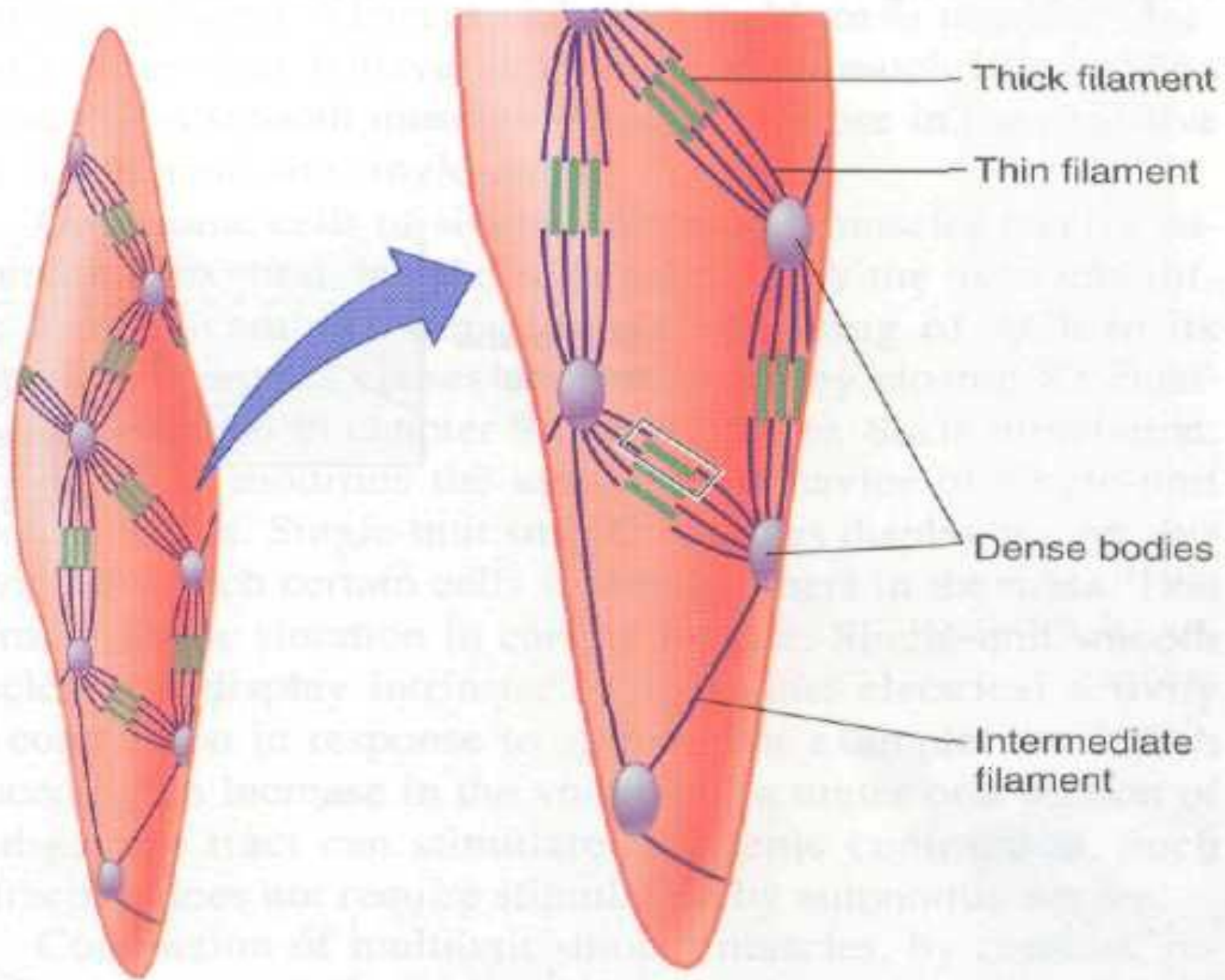


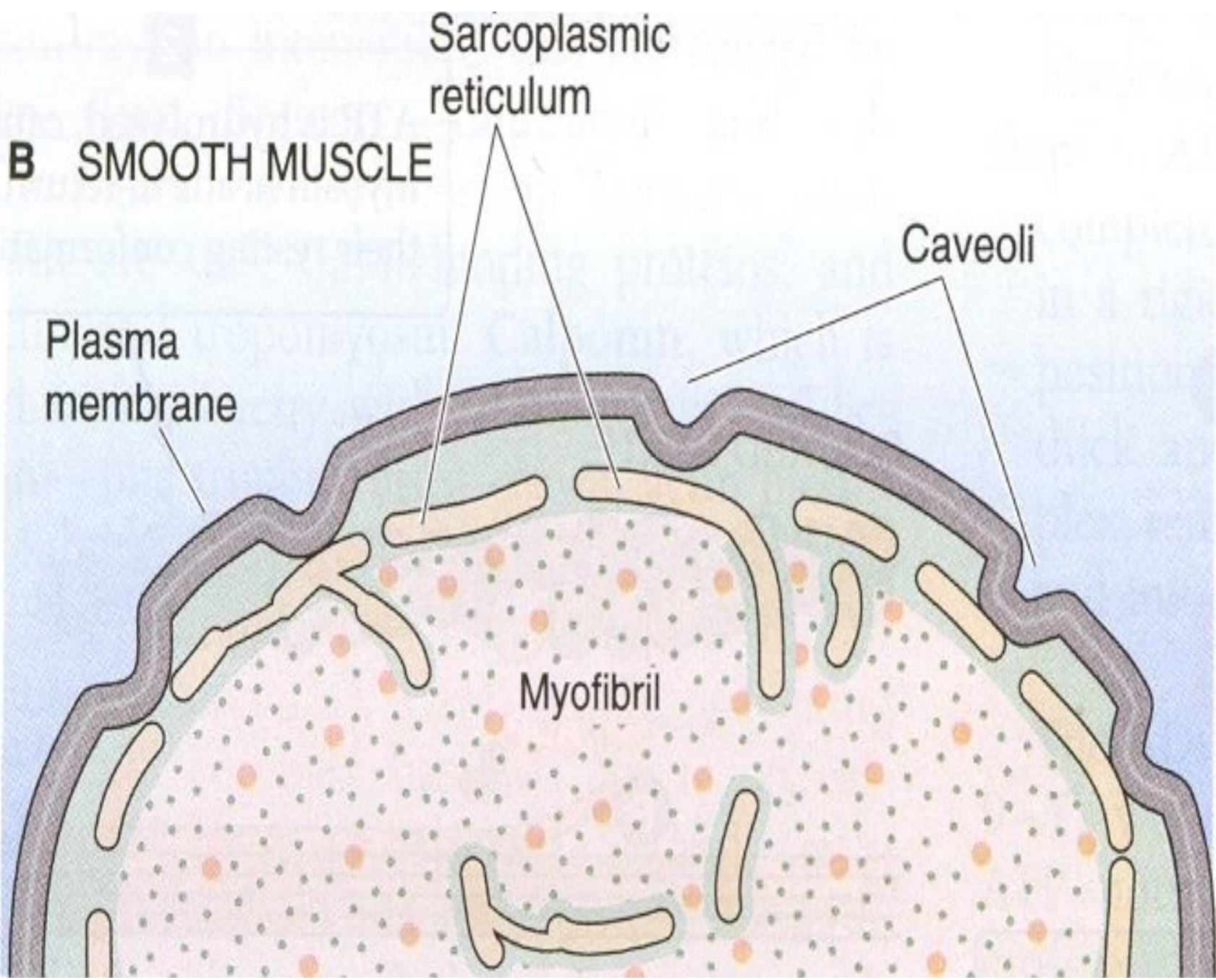
Гладкая мышца

# Гладкая мышца

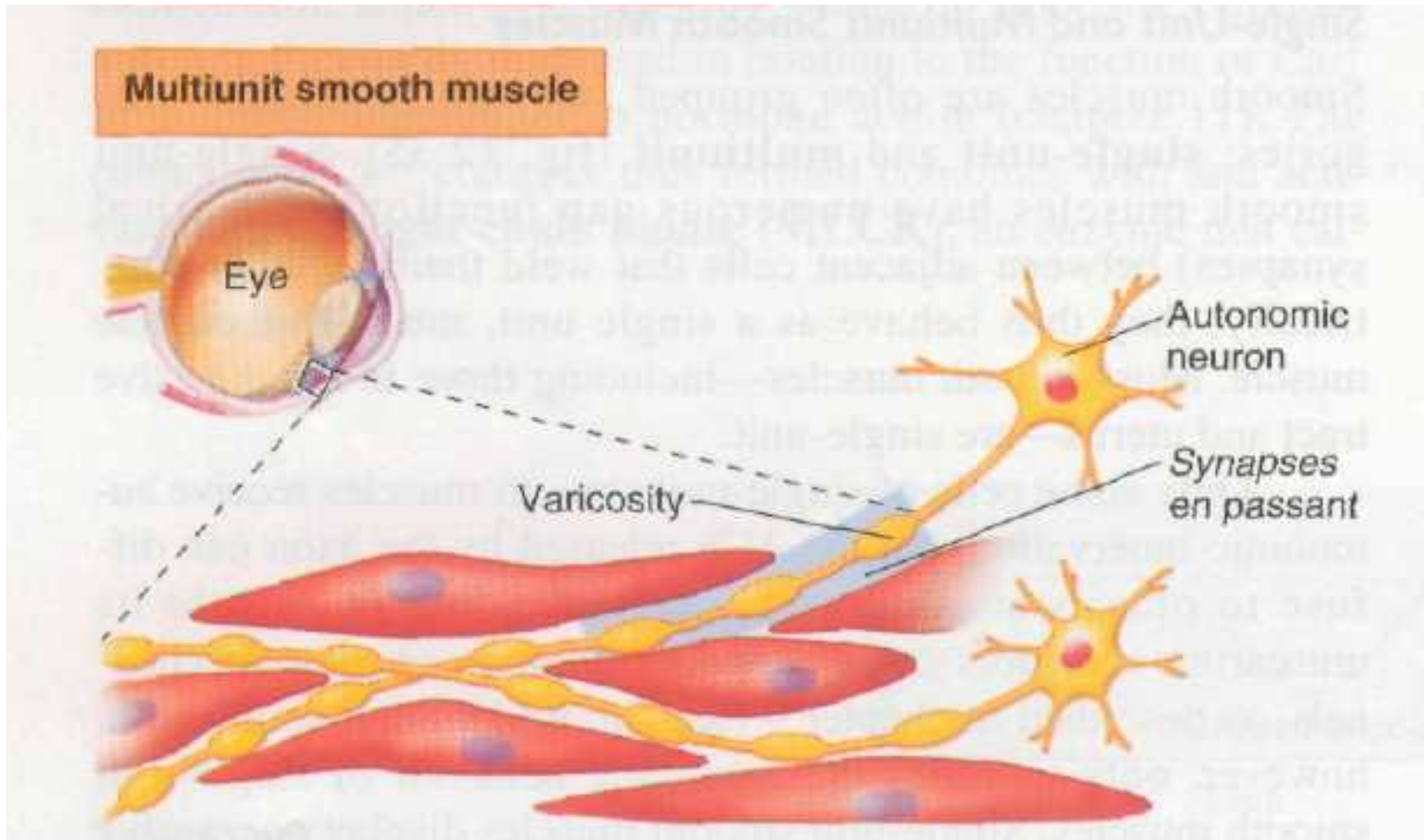




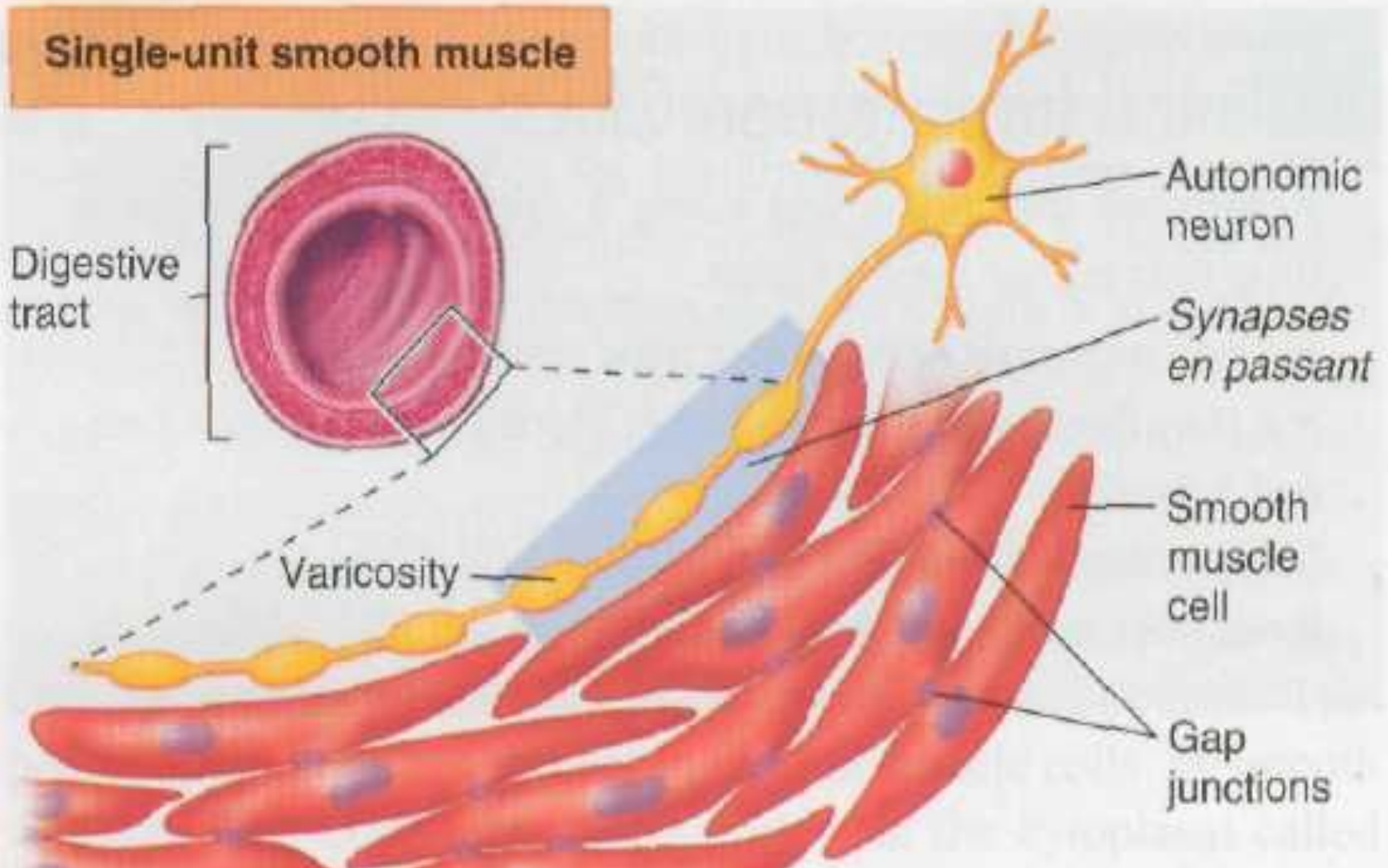
(b)

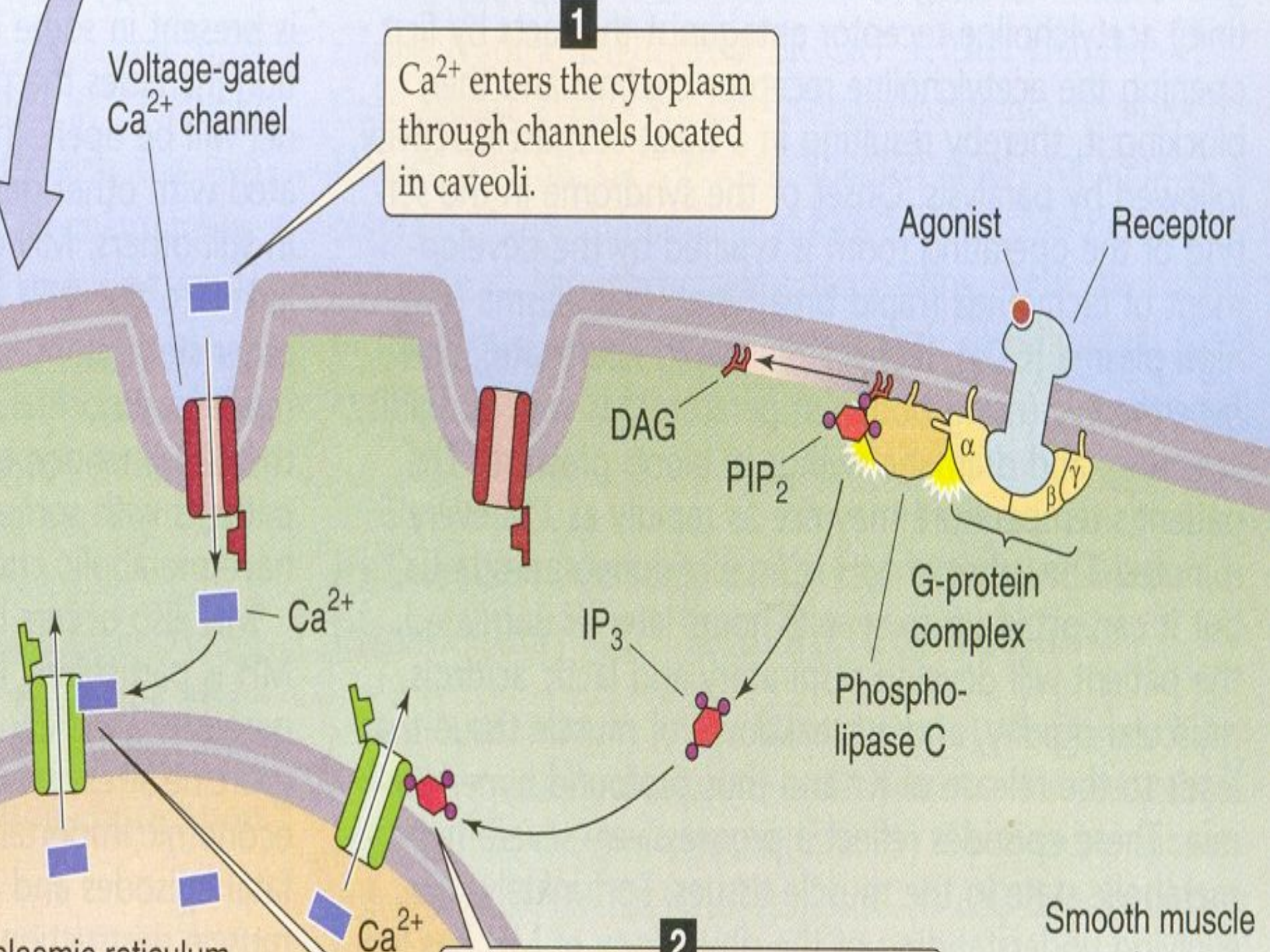


# Мультиунитарная гладкая мышца



# Моноунитарная гладкая мышца





1

$\text{Ca}^{2+}$  enters the cytoplasm through channels located in caveoli.

Voltage-gated  $\text{Ca}^{2+}$  channel

Agonist Receptor

DAG

$\text{PIP}_2$

G-protein complex

Phospholipase C

$\text{IP}_3$

$\text{Ca}^{2+}$

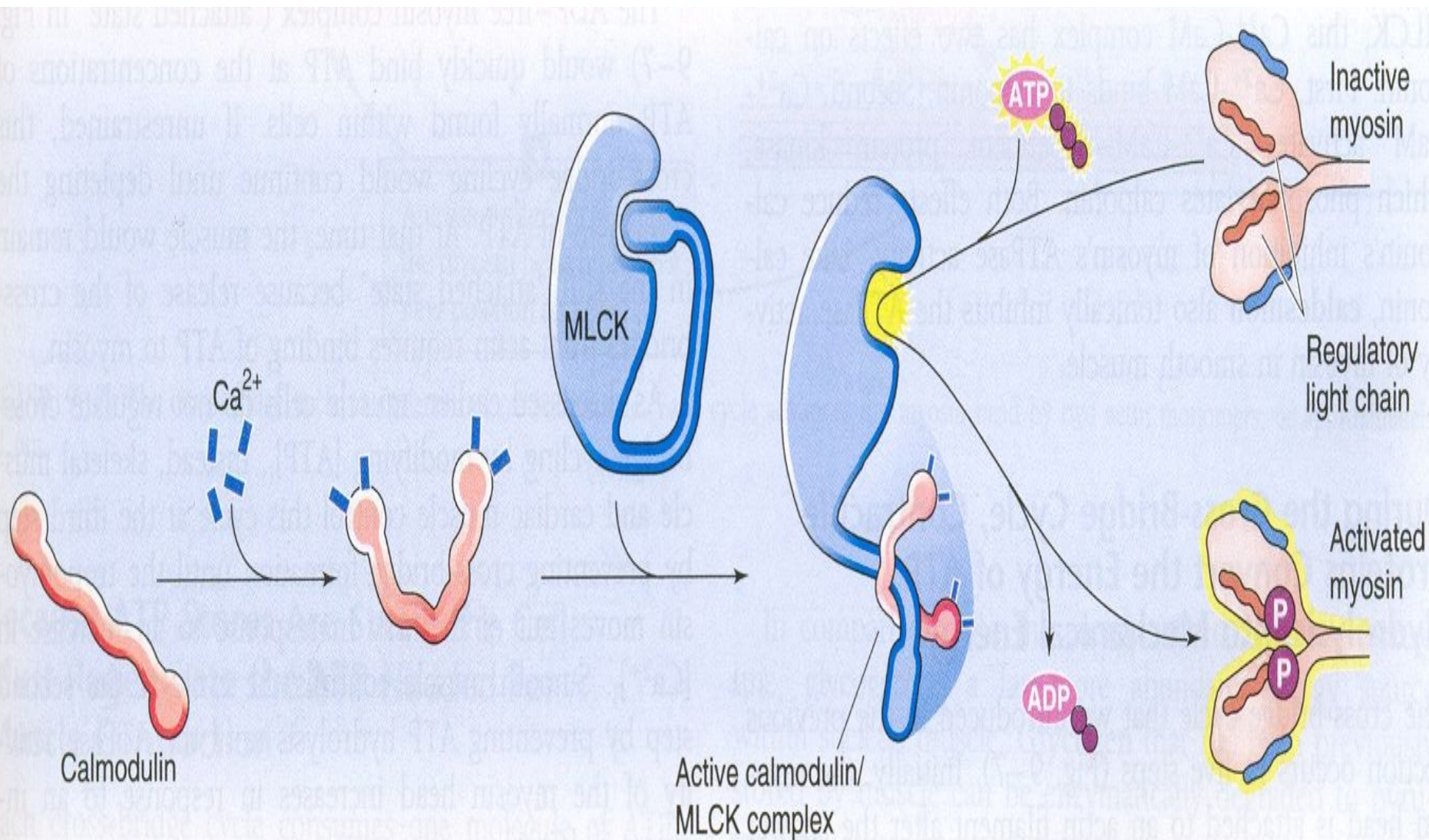
$\text{Ca}^{2+}$

2

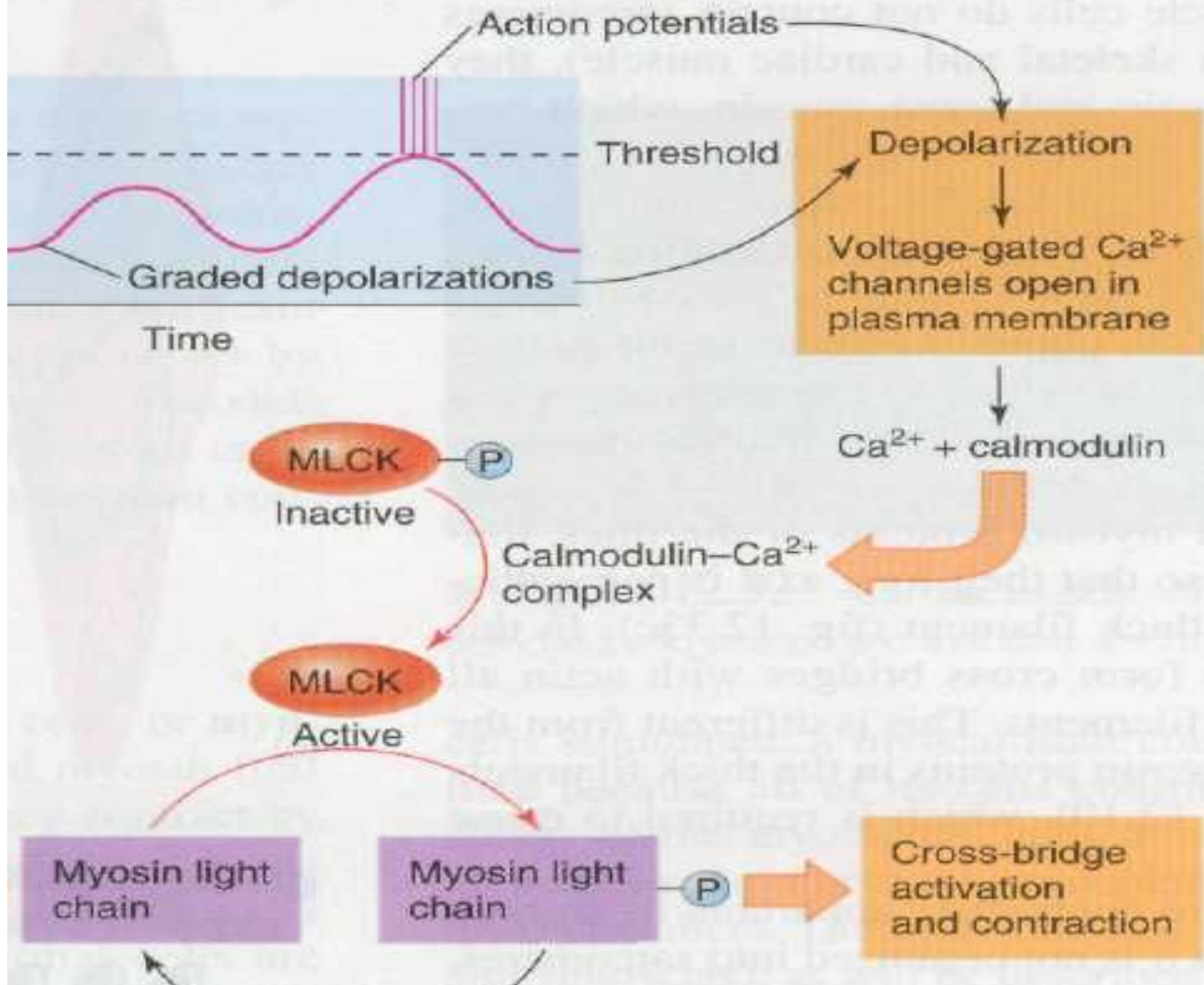
Smooth muscle

Endoplasmic reticulum

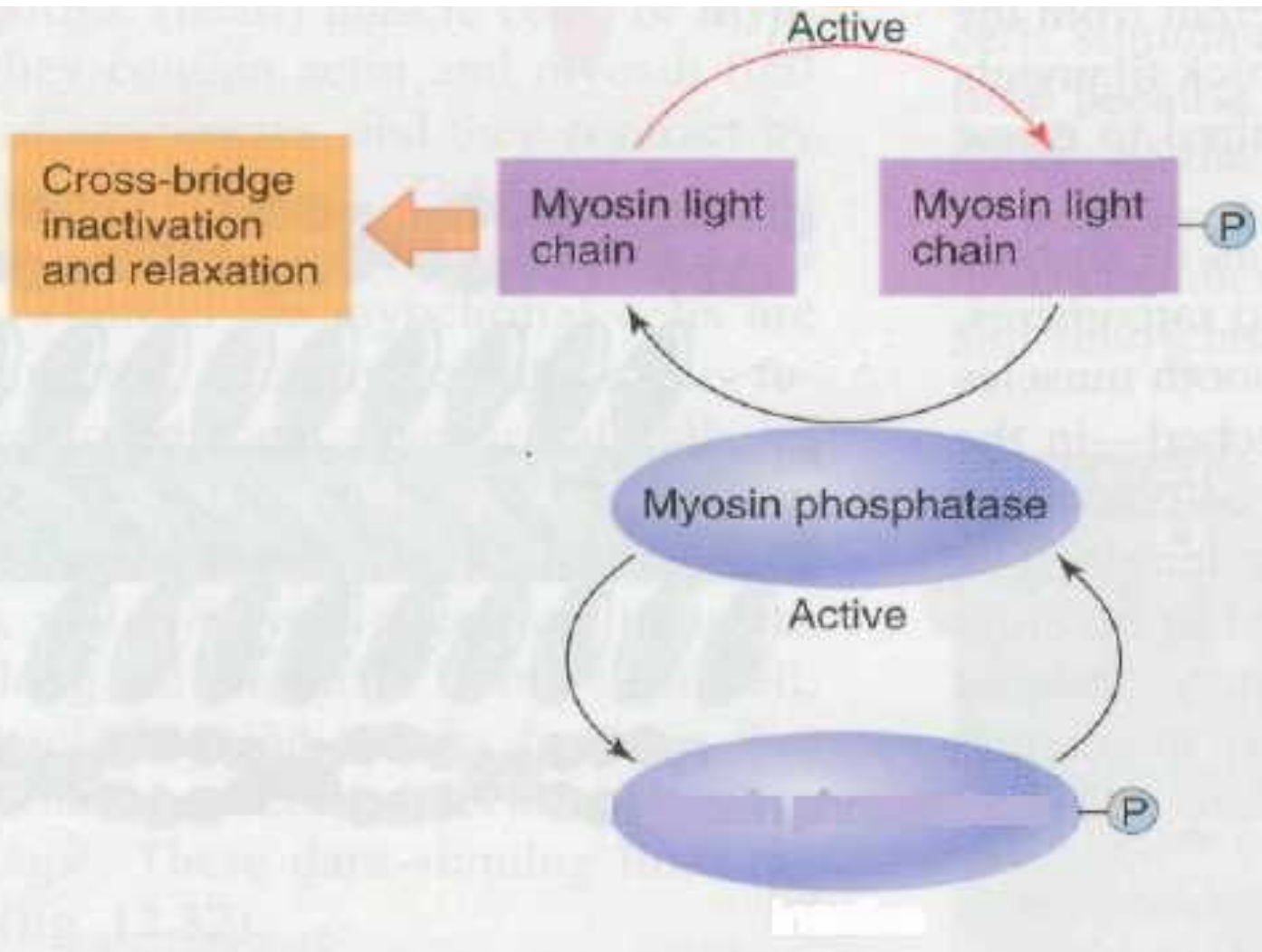
# Инициация цикла образования поперечных мостиков в ГМ







# Механизм расслабления ГМ



# Различные типы ПД

