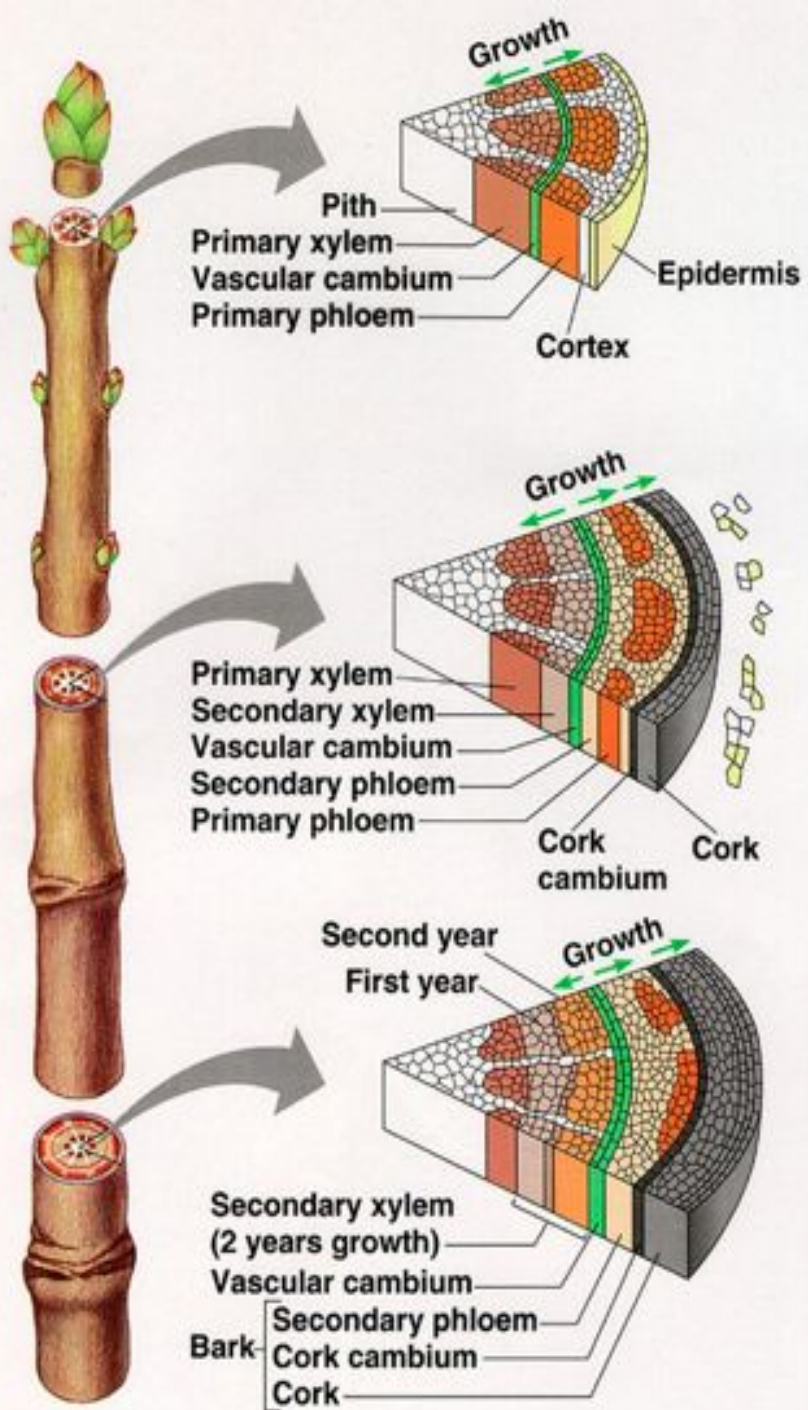


Internal structure of stem

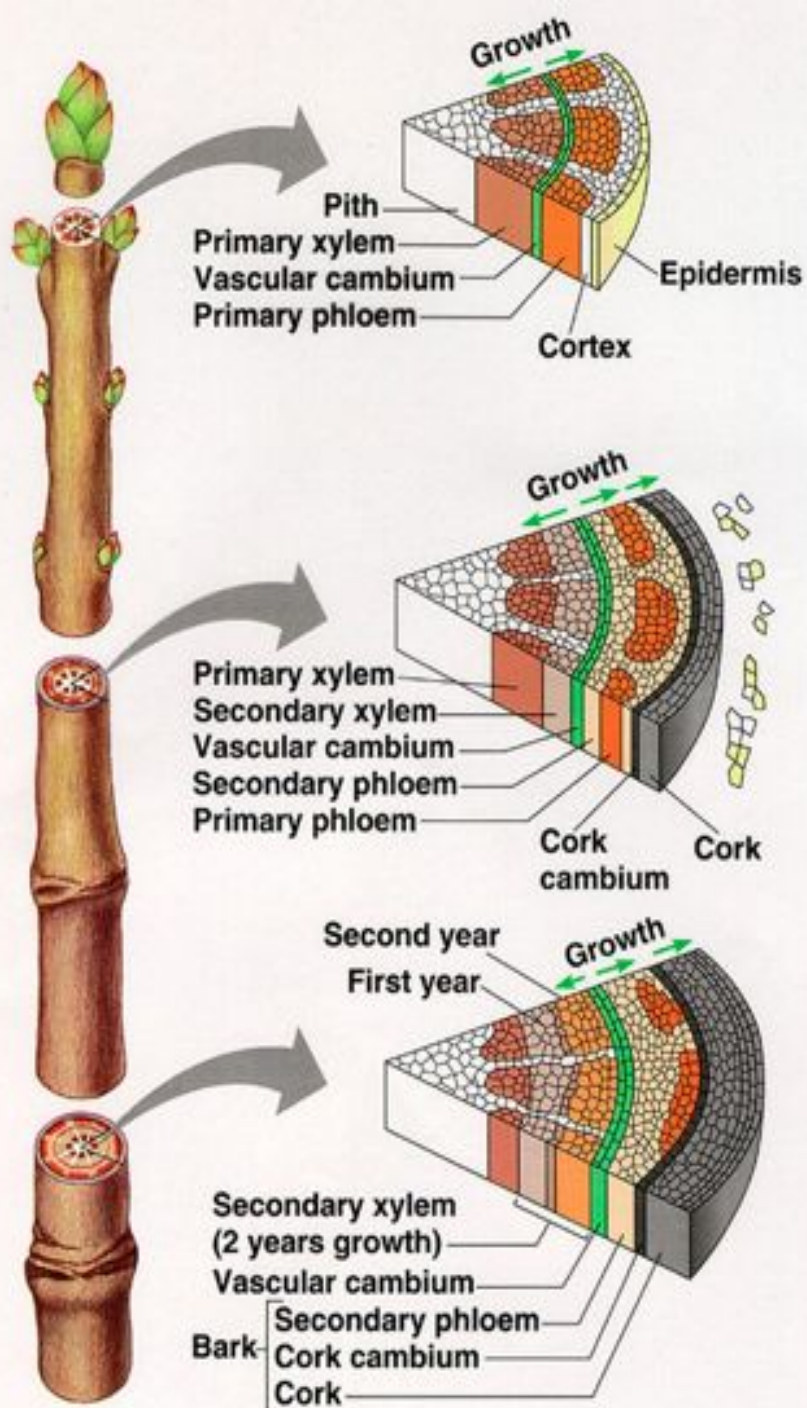


Pith is the center of stem
Xylem is tube like tissue that transports water & minerals from soil. At the center of the stem, xylem is dead(wood), at the outer of stem wood is alive.

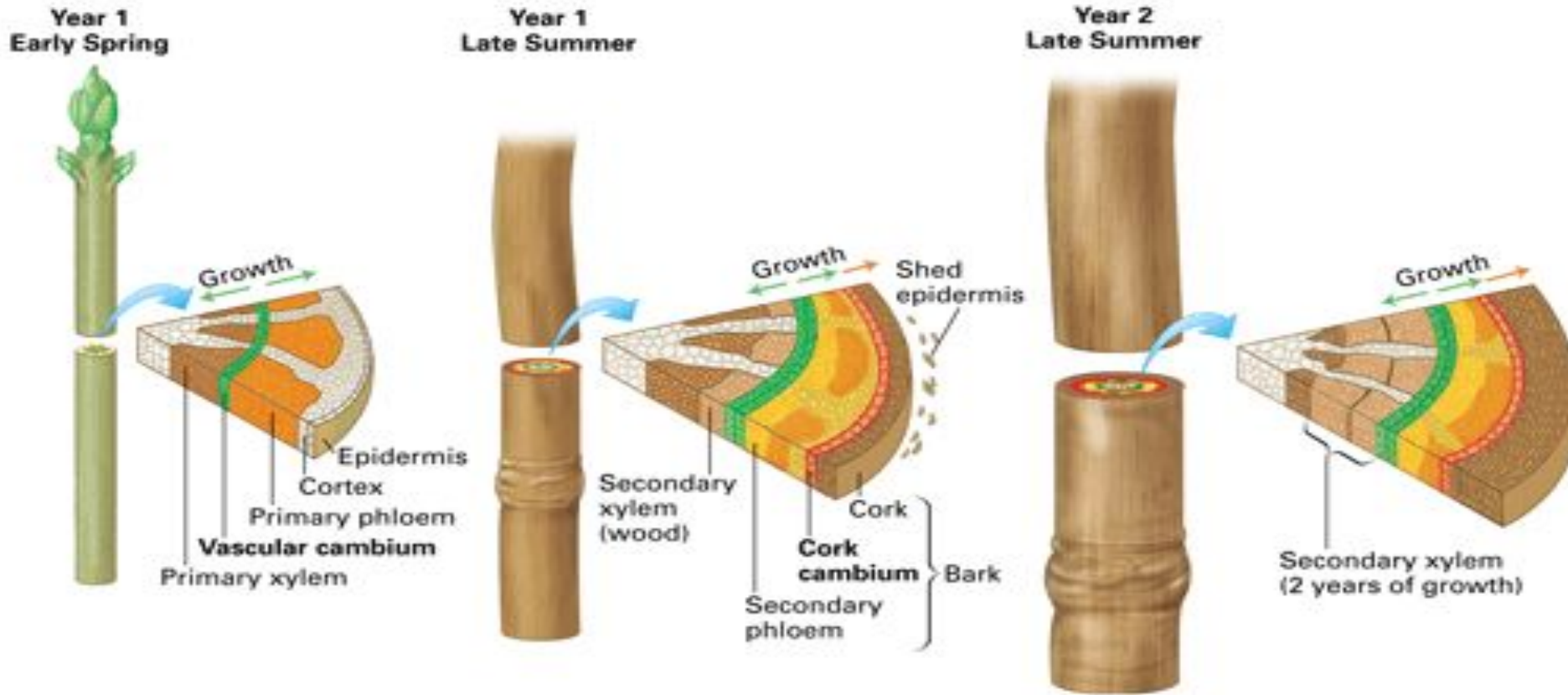
Phloem found under the bark, transports food (sugar) from leaves to other parts of plant.

Cambium is a layer of cell that produces new cells.

Bark protects the stem.



- **Pith** is the center of stem
- **Xylem** is tube like tissue that transports water & minerals from soil.
- At the center of the stem, xylem is dead(wood), at the outer of stem wood is alive.
- **Phloem** found under the bark, transports food (sugar) from leaves to other parts of plant.
- **Cambium** is a layer of cell that produces new cells.
- **Bark** protects the stem.



Cambium is a layer of cell that produces new cells. There are 2 types of cambium: vascular and cork.