




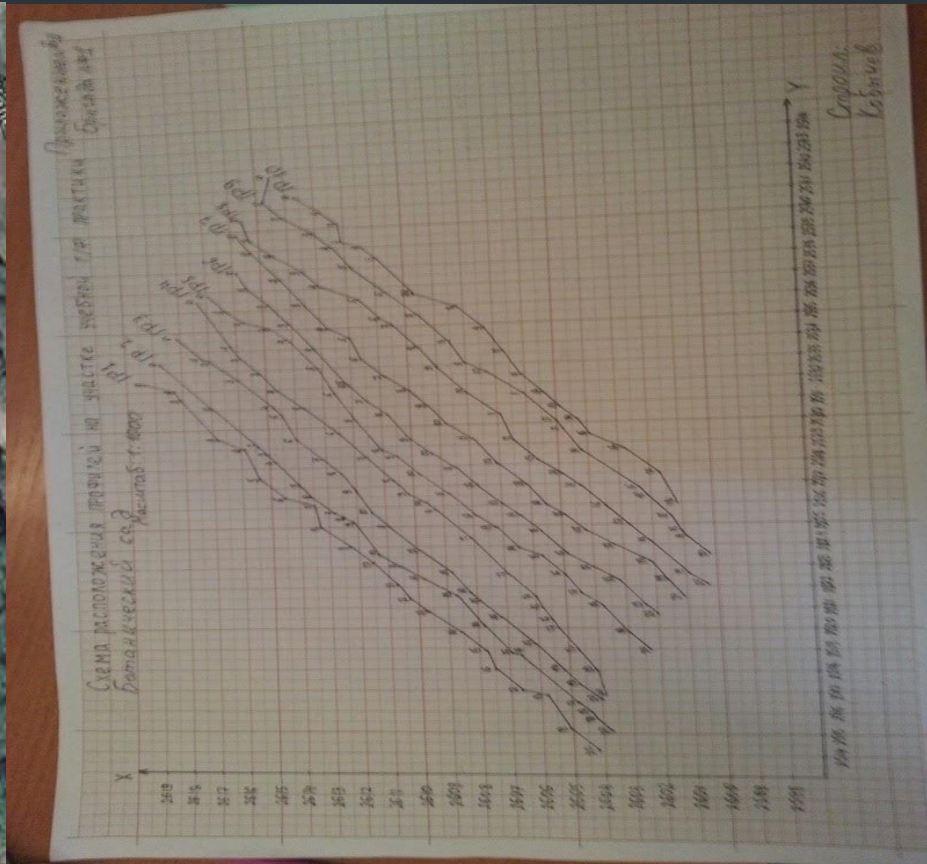
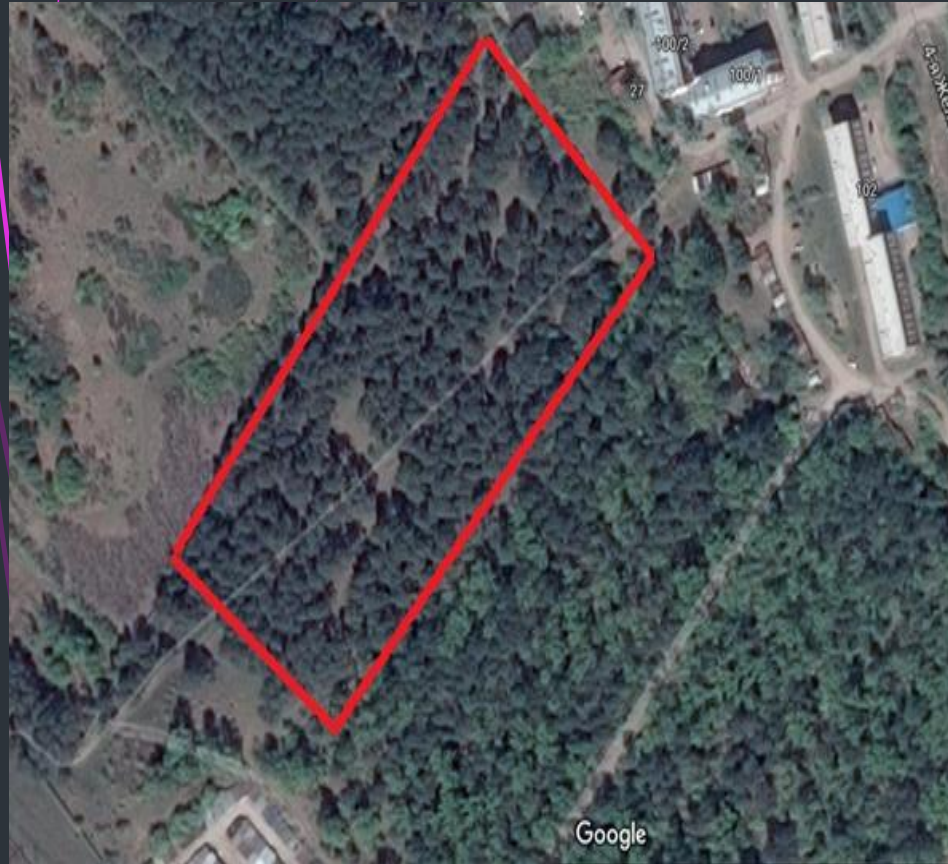
Geophysical practice for 2018

Kobychev Artyom

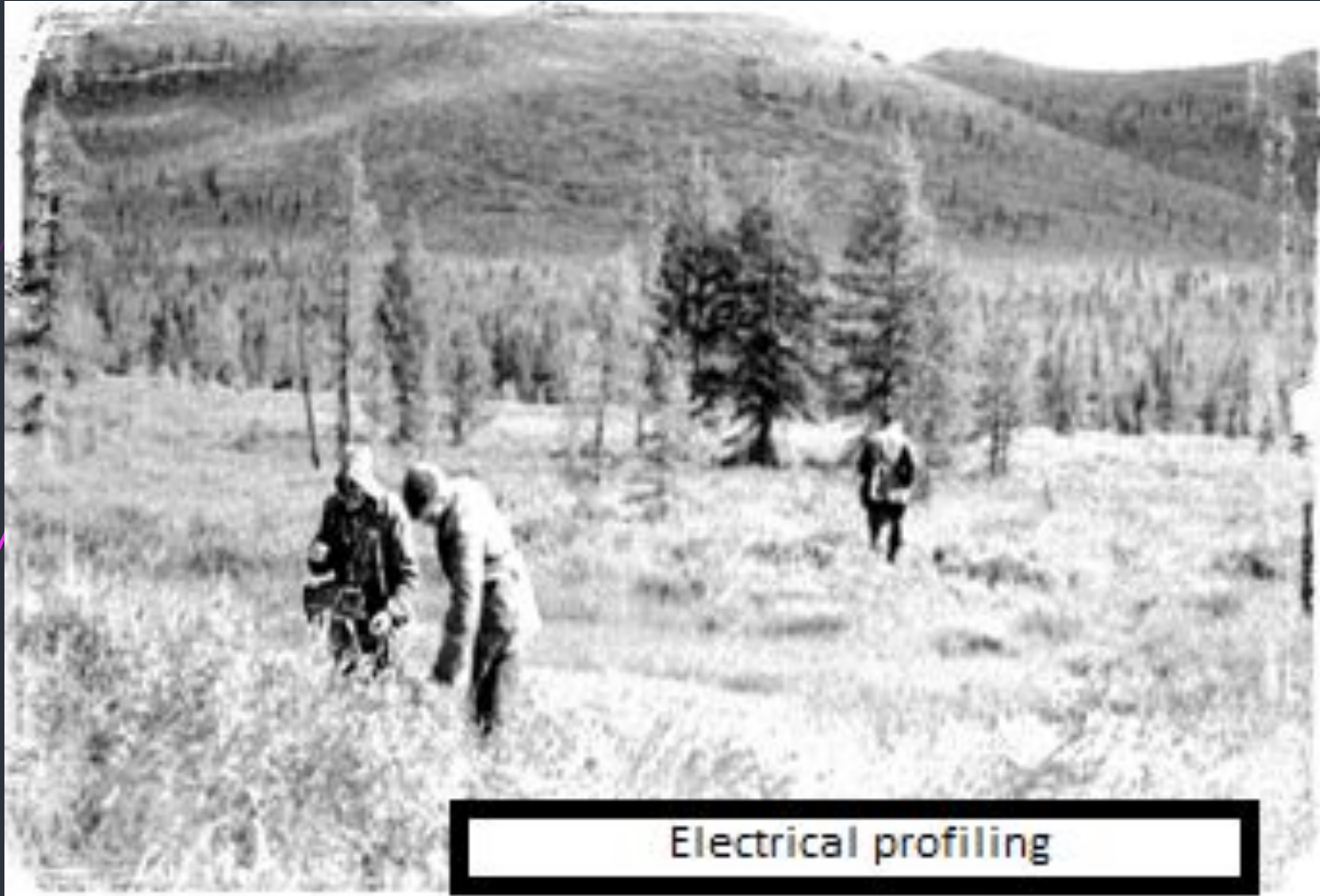


The purpose of this practice is to obtain primary professional skills, including primary skills and abilities of research activities

Scheme of the site «Botanical garden»



Electrical profiling



Electrical profiling

Autocompensator AE-72



Working procedure

Журнал результатов измерений СП
Профиль: CA Оператор: CA

№ п/п	шкет	ΔU , в	I, мА	ρ , Ом·м	примечание
1	3/4	130	20	205,575	245,34,0
2	4/4	43	10	206,325	
3	5/4	112	4	206,5	
4	6/4	32	5	203,6	
5	4/4	50	3	205,0375	
6	2/4	23	3	202,749	
7	3/2	42	5	200,1	
8	10/4	60	3	183,125	
9	11/4	67	4	162,577	
10	12/4	40	9	1477,17	
11	13/4	36	4	1089,75	
12	14/4	39	5	213,45	
13	15/4	70	12	1437,5	
14	16/4	80	9	1046,006	
15	14/3	35	5	216,145	
16	15/3	50	6	231,250	
17	12/3	22	11	334,54	
18	11/3	50	6	331,250	
19	10/3	60	9	302,949	
20	8/3	49	4	244,15	
21	8/3	50	4	341,071	
22	4/3	34	5	671,35	

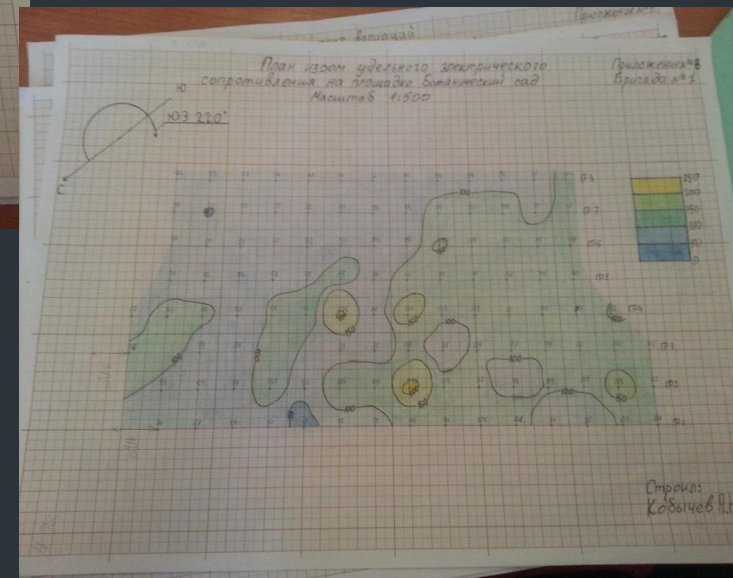
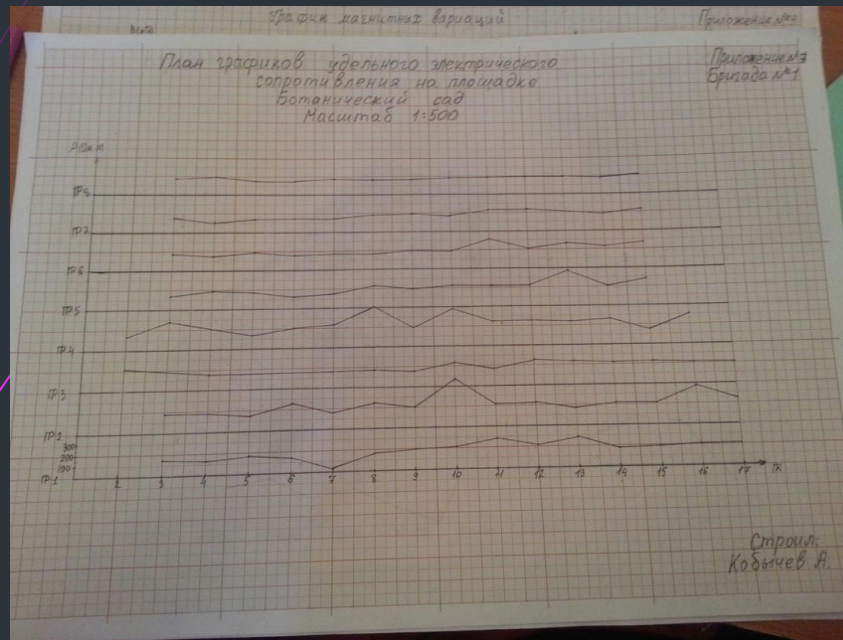
Журнал результатов измерений СП
Профиль: G Оператор: G

№ п/п	шкет	ΔU , в	I, мА	ρ , Ом·м	примечание
1	15	44	30	115,126	
2	10	70	7,2	97,115	
3	13	58	5,2	131	
4	12	46	5,2	28,104	
5	11	32	2,4	157	
6	10	52	7,2	8295	
7	9	30	3,6	78,98	
8	4	22	3,2	62,80	
9	7	48	0,8	702,33	
10	6	34	5,2	65,77	
11	5	30	3,8	78,93	
12	4	26	4	65,77	
13	3	30	4,2	71,81	

Журнал результатов измерений СП
Профиль: S Оператор: S

№ п/п	шкет	ΔU , в	I, мА	ρ , Ом·м	примечание
1	3	24	4	207,065	
2	11	50	6,7	42,32	
3	5	30	4	75,38	
4	6	30	5,6	63	
5	7	28	4,4	6375	
6	8	40	7,2	97,115	
7	9	32	4	3094	
8	10	74	7,8	28,112	
9	11	60	6,04	23,110	
10	12	70	7,4	34,111	
11	13	75	7,4	185	
12	14	30	3,4	84,103	
13	15	64	5,4	74,140	
14	70				
15					
16					
17					
18					
19					

Analysis of results



Conclusion

- The data of the method of symmetrical electrical profiling carry information about the geoelectric inhomogeneities along the profiles or over the area in a certain range of depths.

A dark blue background with a pink arrow pointing right at the top left. Below the arrow are several thin, curved pink lines that sweep across the left side of the frame.

Thanks for watching