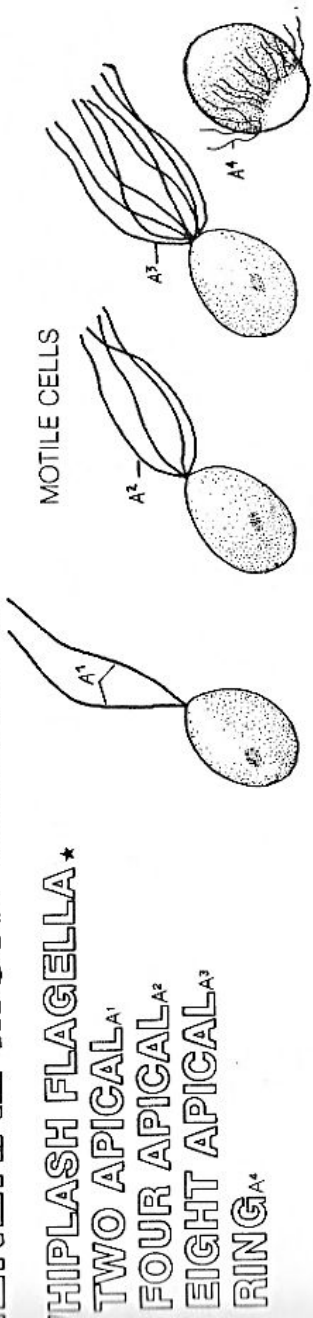
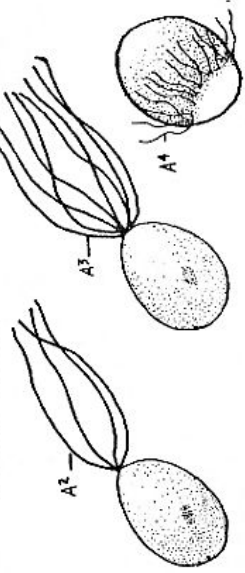


GENERAL MORPHOLOGY.



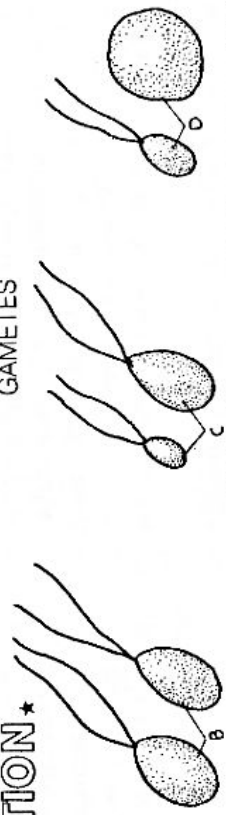
- HIPLASH FLAGELLA*
- TWO APICAL^{A1}
- FOUR APICAL^{A2}
- EIGHT APICAL^{A3}
- RING^{A*}

MOTILE CELLS



SEXUAL REPRODUCTION*

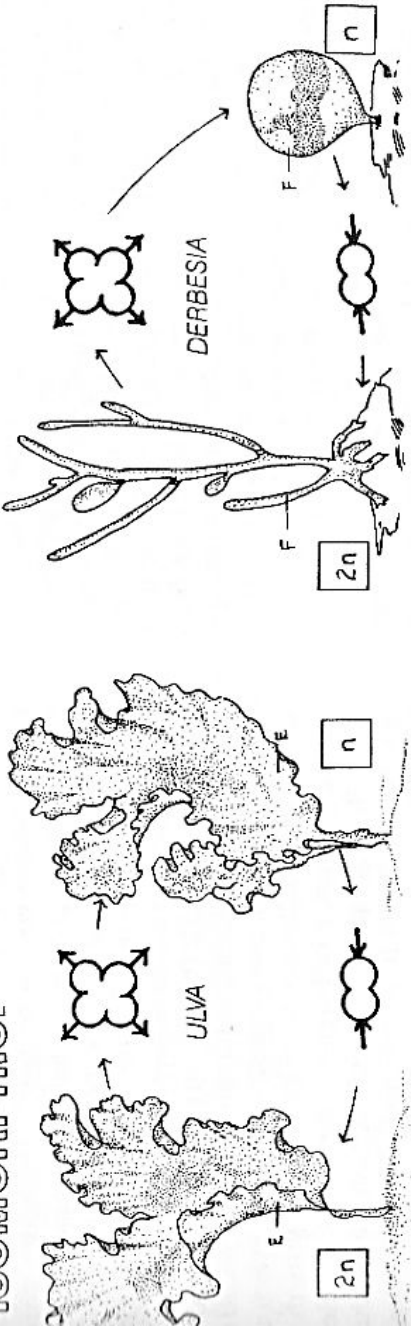
GAMETES



- ISOGAMY: B
- ANISOGAMY: C
- OOGAMY: D

GENERATIONS*

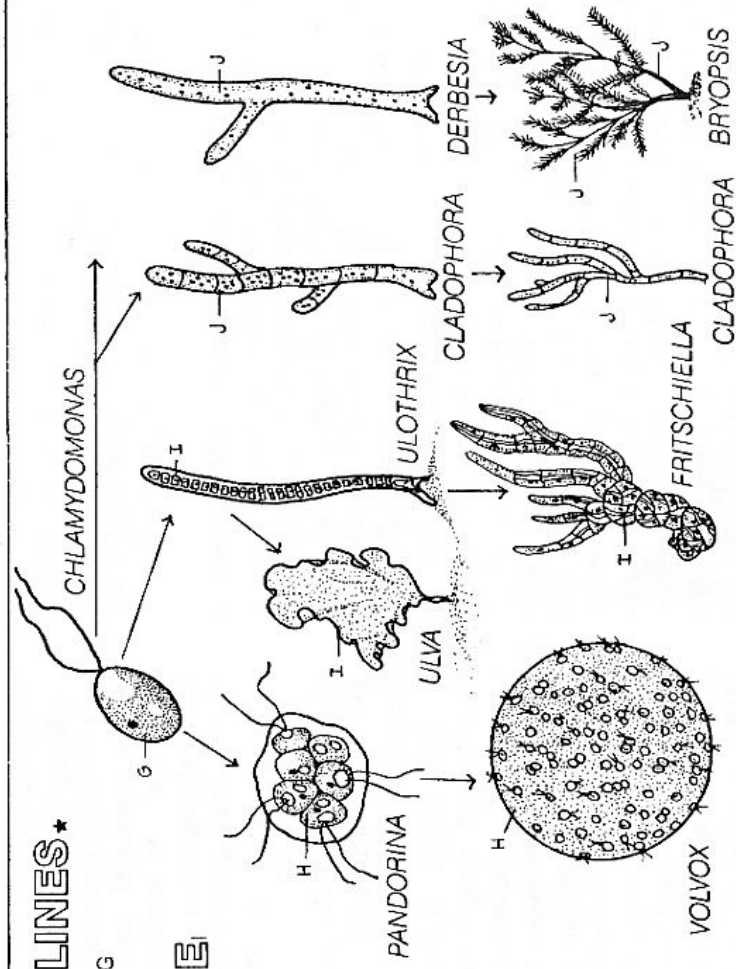
HETEROMORPHIC:



- ISOMORPHIC^E

VOLUTIONARY LINES*

- UNICELLULAR: G
- VOLVOGINE^H
- TETRASPORINE: I
- SIPHONOUS: J



- UNICELLULAR: G
- VOLVOGINE^H
- TETRASPORINE: I
- SIPHONOUS: J

CHLAMYDOMONAS LIFE HISTORY.

CHLAMYDOMONAS CELL*

CELL WALL^A

PROTOPLAST*

CYTOPLASM^B

CHLOROPLAST^C

PYRENOID^D

STARCH GRAIN^E

EYE SPOT^F

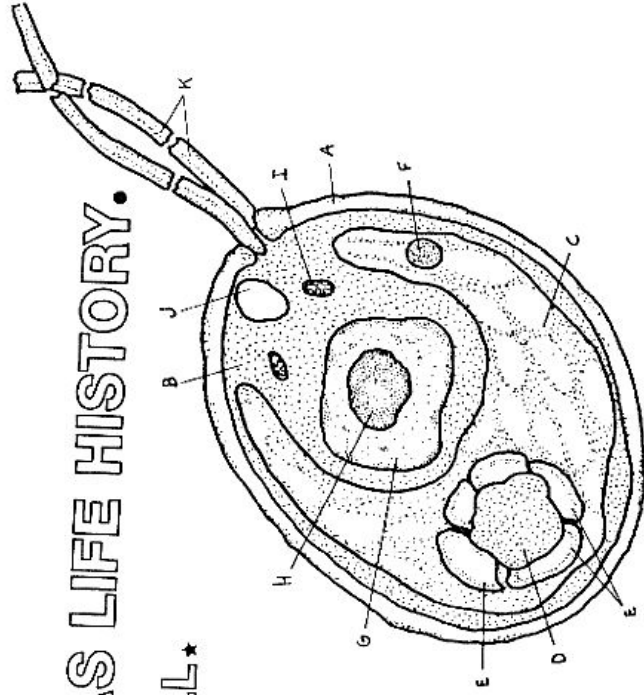
NUCLEUS^G

NUCLEOLUS^H

MITOCHONDRION^I

CONTRACTILE VACUOLE^J

FLAGELLUM^K

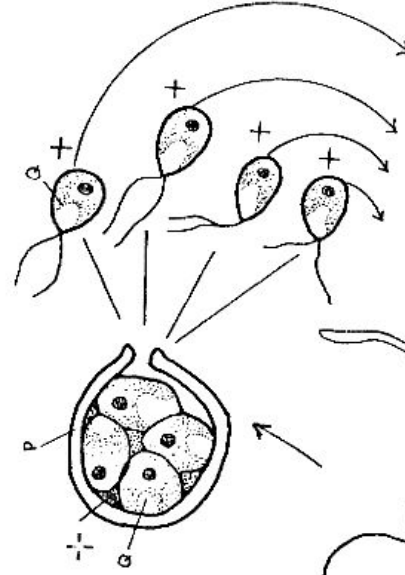


ASEXUAL

REPRODUCTION*

MITOSPORANGIUM^P

ASEXUAL ZOOSPORE⁺



SEXUAL

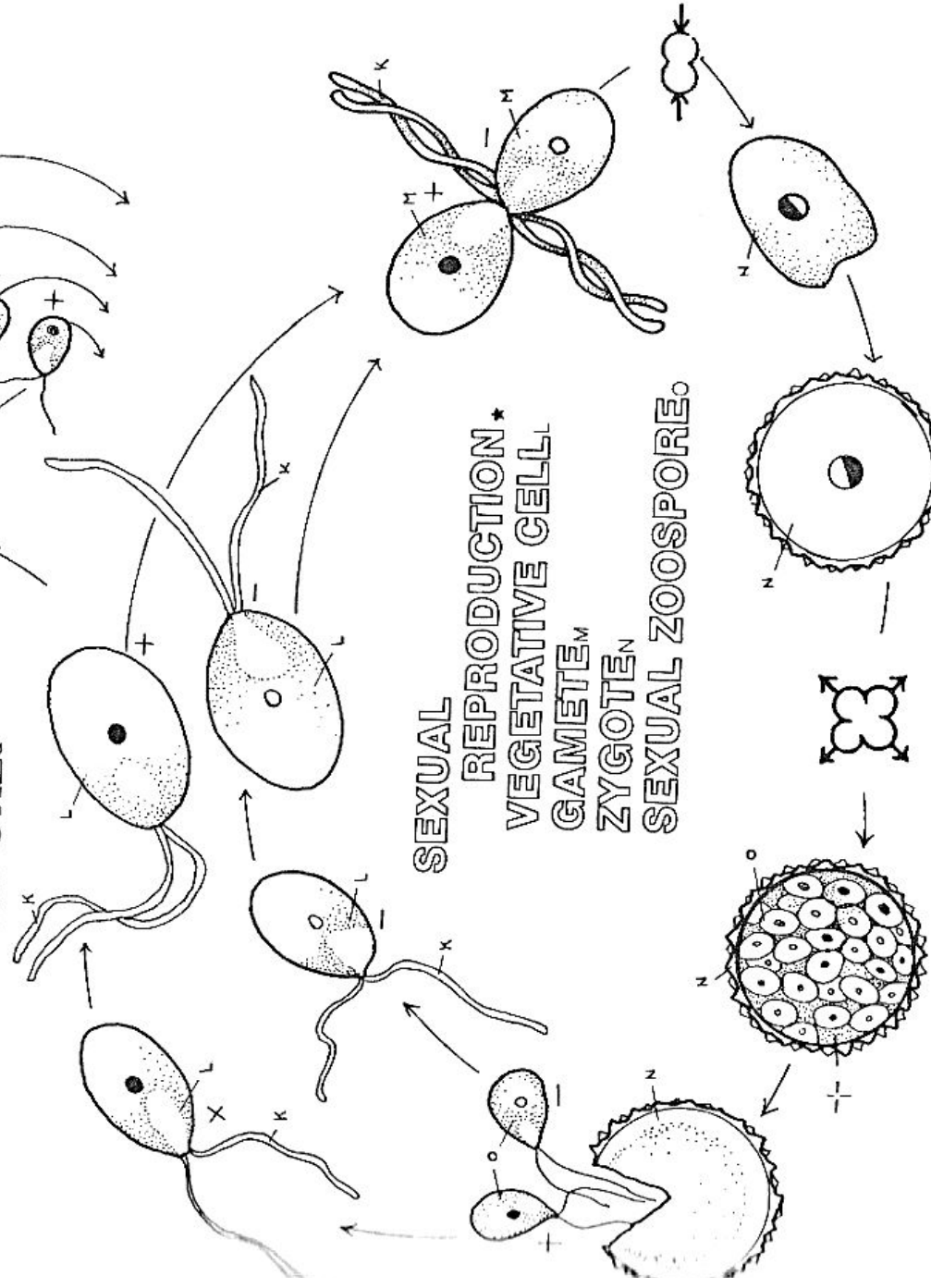
REPRODUCTION*

VEGETATIVE CELL^L

GAMETE^M

ZYGOTE^N

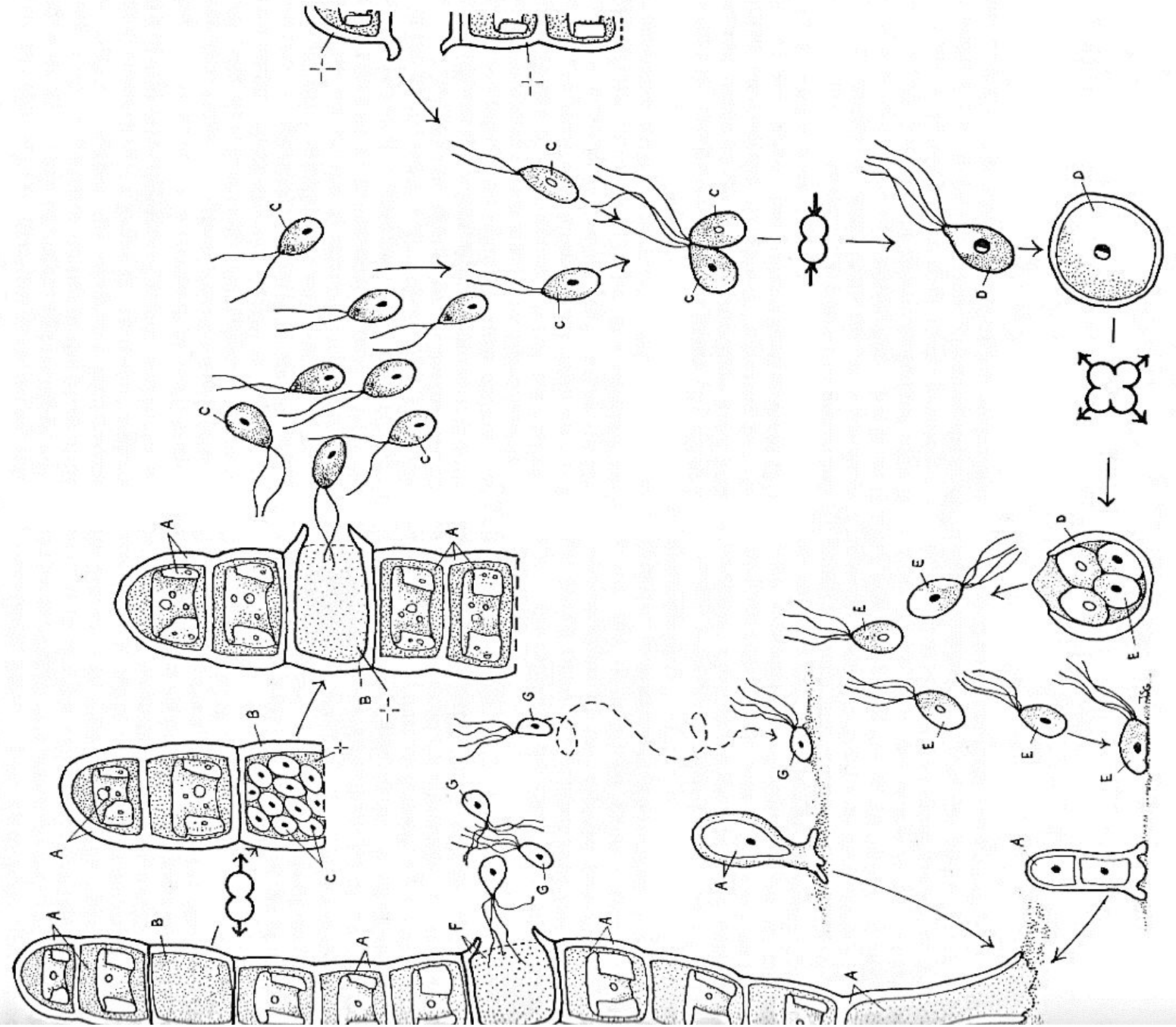
SEXUAL ZOOSPORE⁻



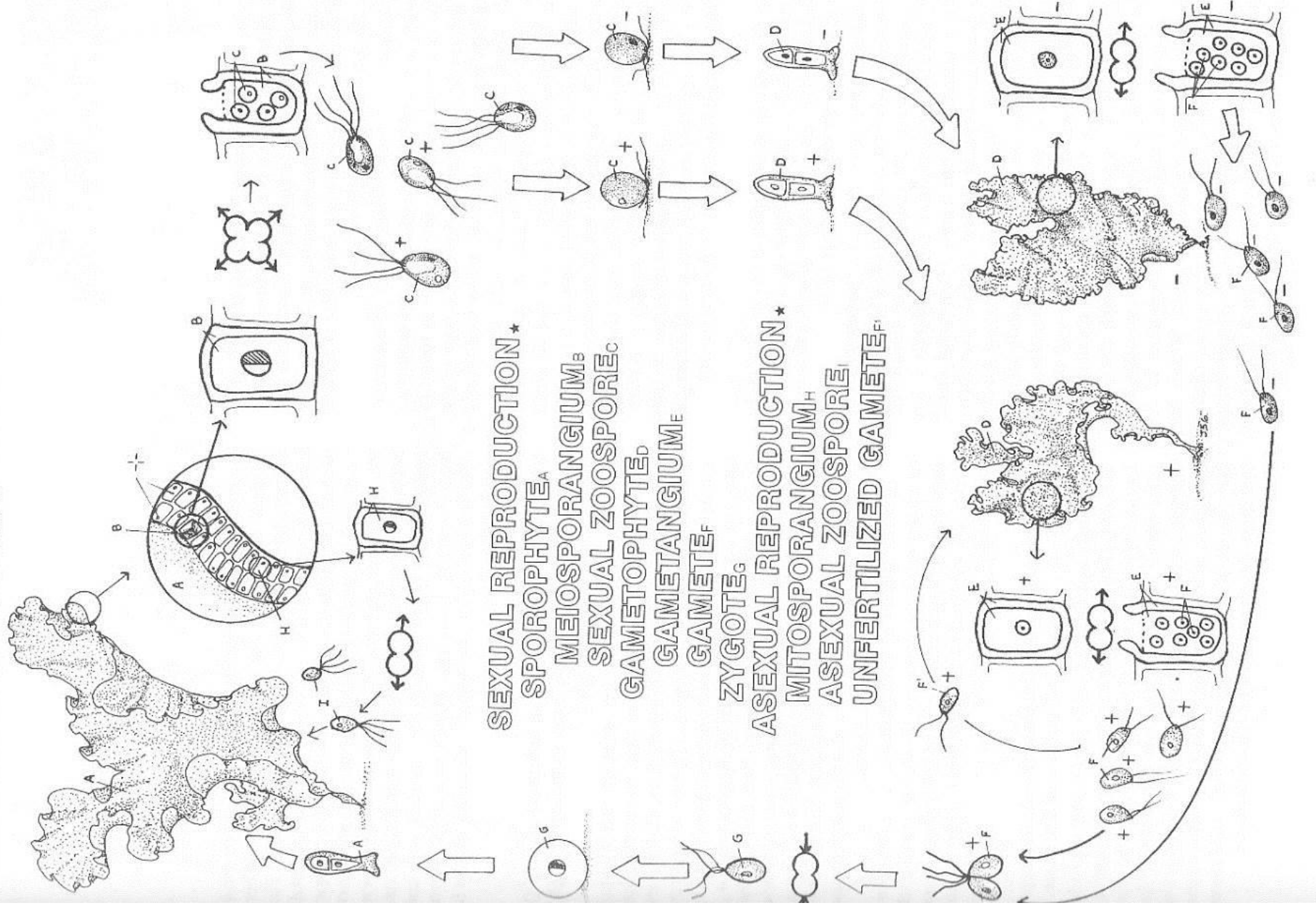
ULOTHRIX LIFE HISTORY.

SEXUAL REPRODUCTION ★
 GAMETOPHYTE^A
 GAMETANGIUM^B
 GAMETE^C
 ZYGOTE/ZYGOSPORE^D
 SEXUAL ZOOSPORE^E

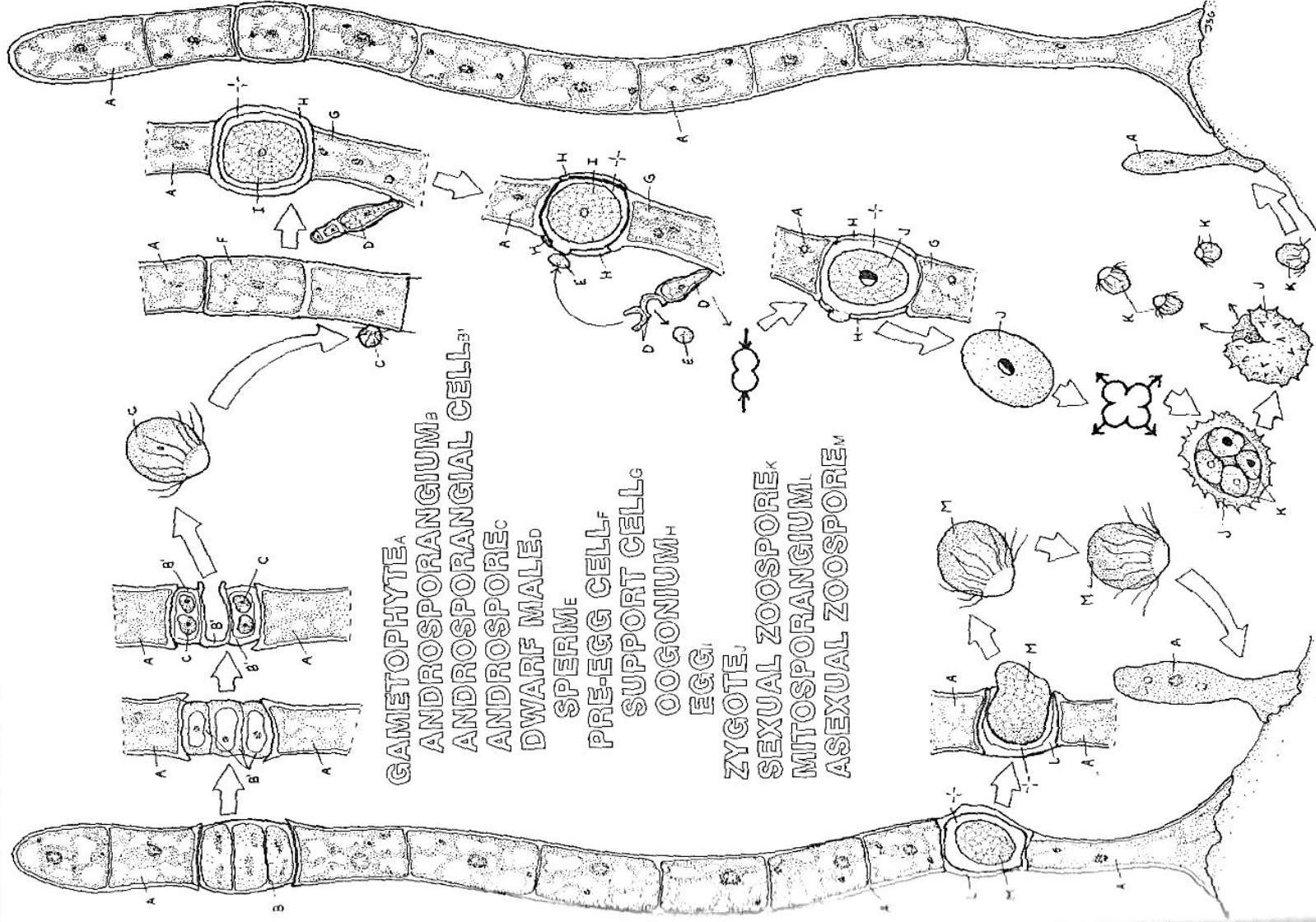
ASEXUAL REPRODUCTION ★
 MITOSPORANGIUM^F
 ASEXUAL ZOOSPORE^G



ULVA LIFE HISTORY.



OEDOGONIUM LIFE HISTORY.



GOLDEN-BROWN ALGAE INTRODUCTION.

DIATOMS*

PARENT VALVES*

LARGE^A

NEW^{A'}

SMALL^B

NEW^{B'}

PROTOPLAST^C

PROGENY VALVES*

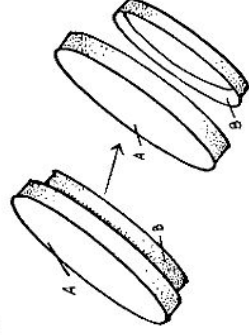
1st GENERATION^D

2nd GENERATION^E

3rd GENERATION^F

GAMETE^G

ZYGOTE^H

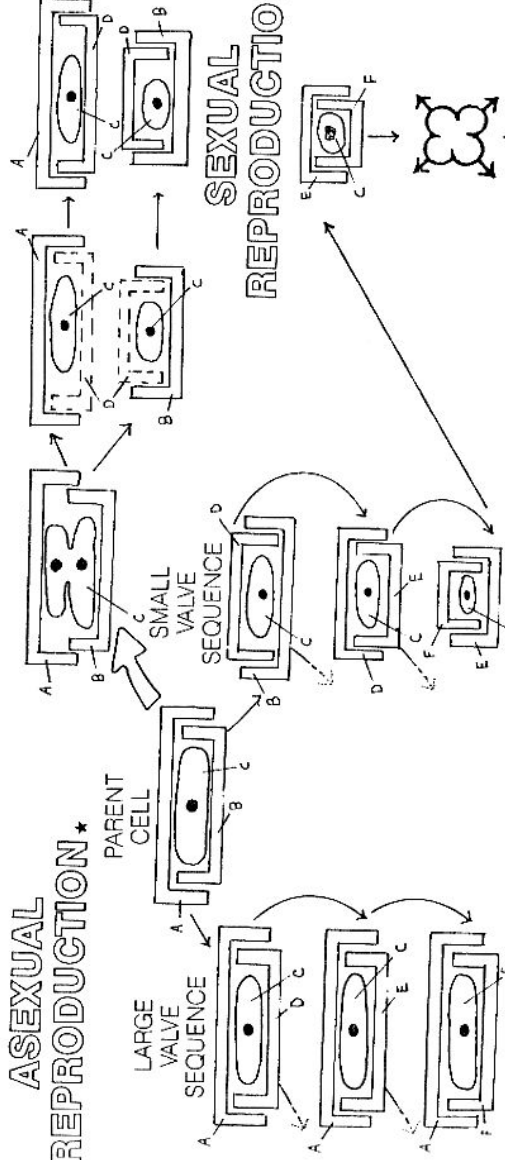


ASEXUAL REPRODUCTION*

PARENT CELL

LARGE VALVE SEQUENCE

SMALL VALVE SEQUENCE



SEXUAL REPRODUCTION*

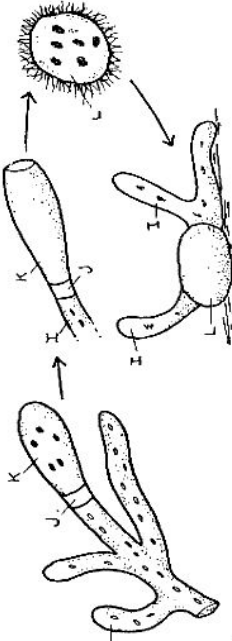
YELLOW-GREEN ALGAE*

FLAMENT.

SEPTUM^J

SPORANGIUM^K

ZOOSPORE^L



ASEXUAL REPRODUCTION

COGONIDIUM^M

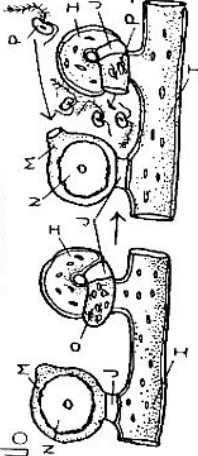
EGG^N

ANTHERIDIUM^O

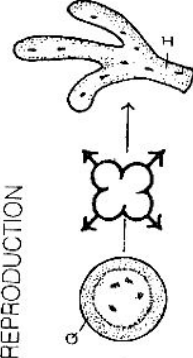
SPERM^P

ZYGOTE^Q

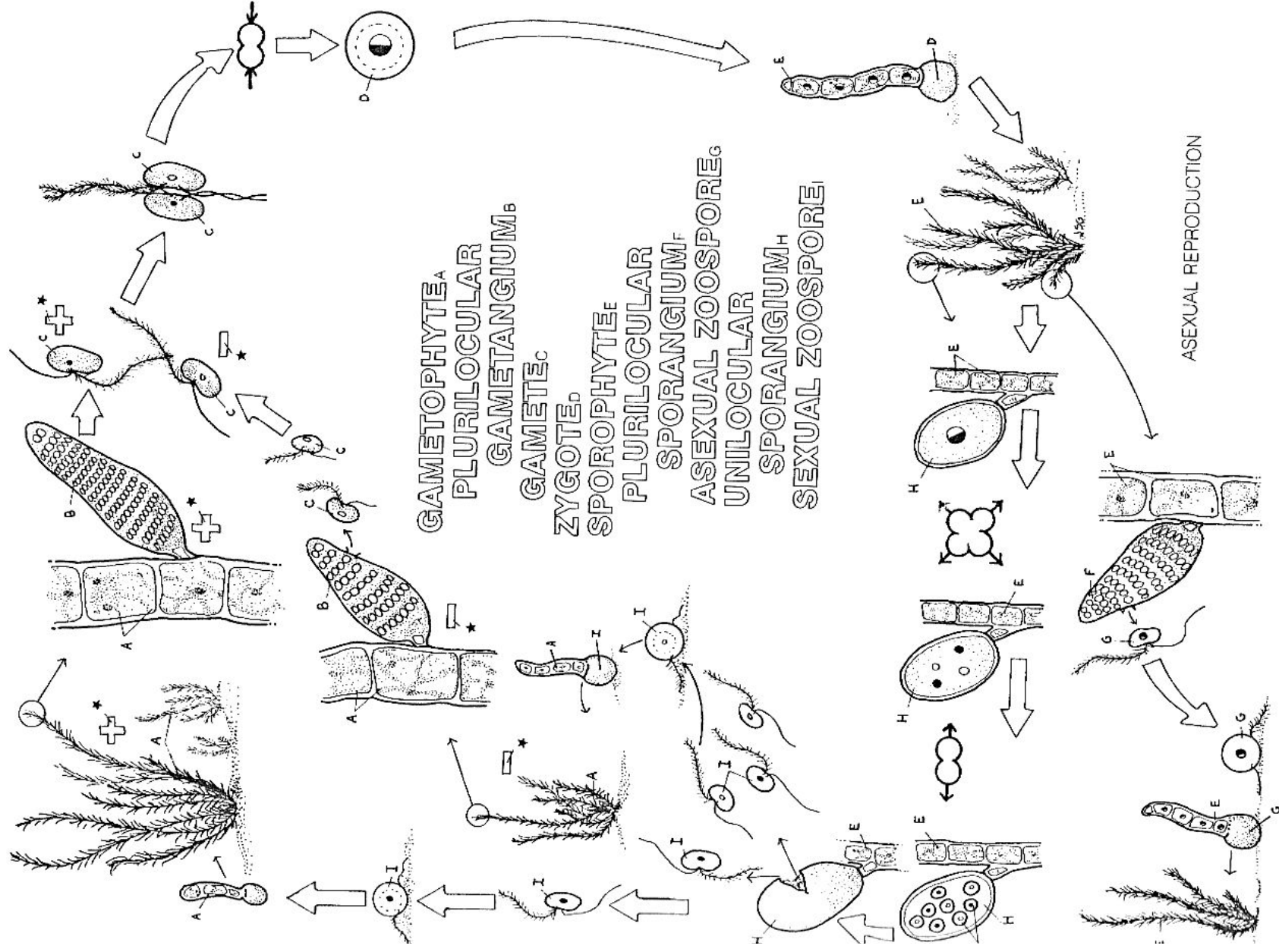
VAUCHERIA



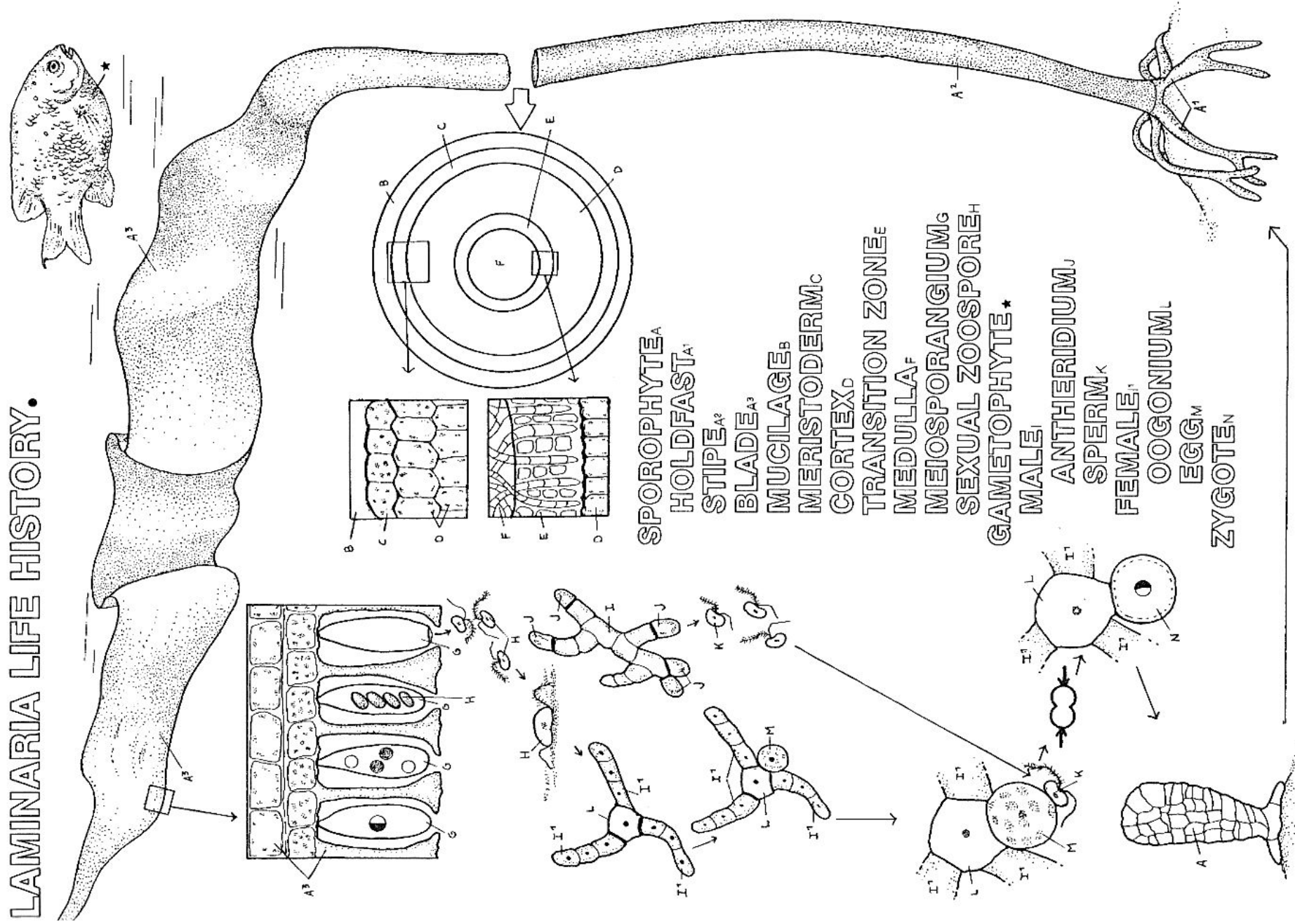
SEXUAL REPRODUCTION



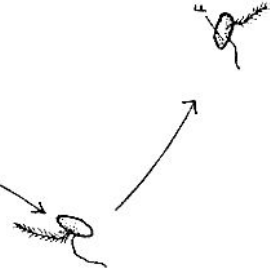
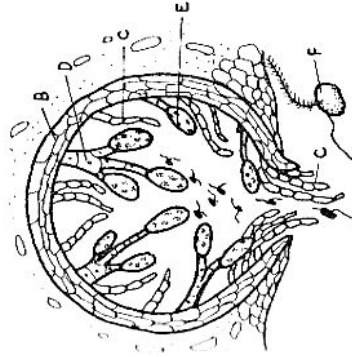
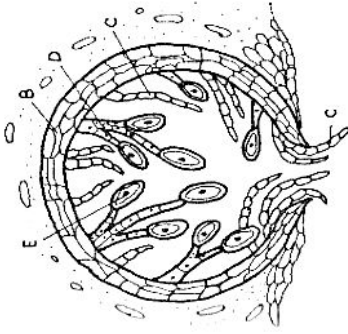
ECTOCARPUS LIFE HISTORY.



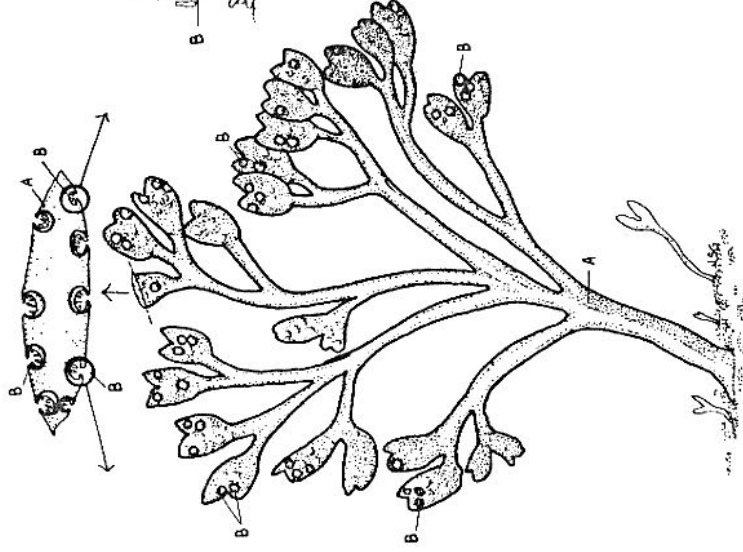
LAMINARIA LIFE HISTORY.



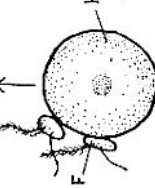
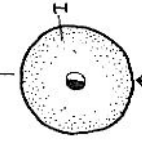
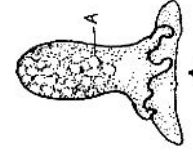
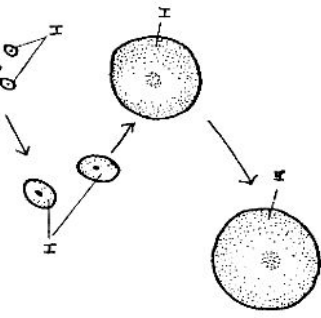
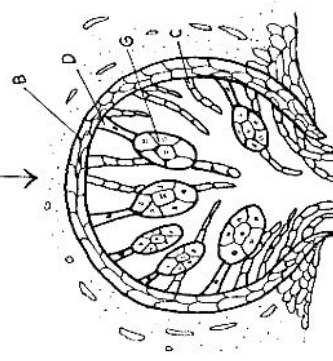
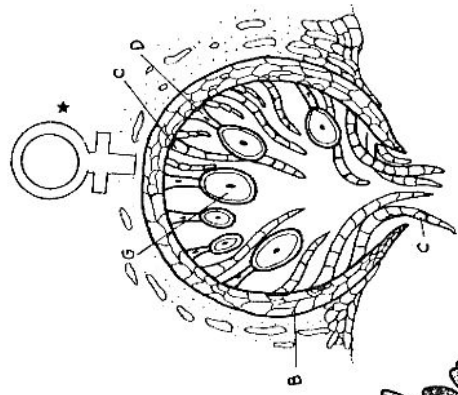
**FUCUS
LIFE
HISTORY.**



**SPOROPHYTE^A
CONCEPTACLE:
PARAPHYSES:
FERTILE FILAMENT,
GAMETANGIUM*
ANTHERIDIUM^E
SPERM^F**

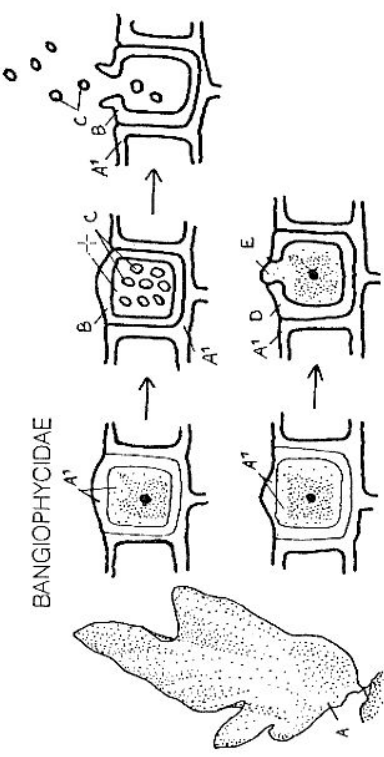


**OOGONIUM^G
EGG^H
ZYGOTE**

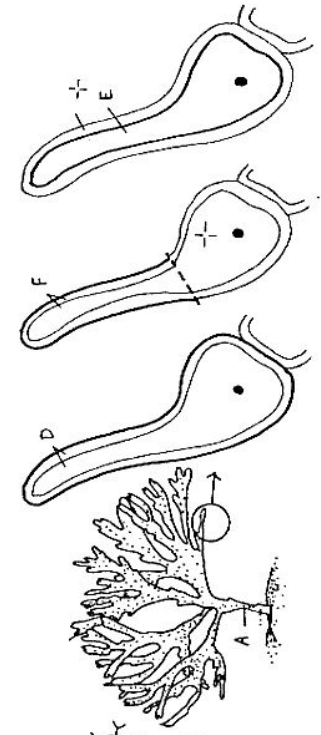
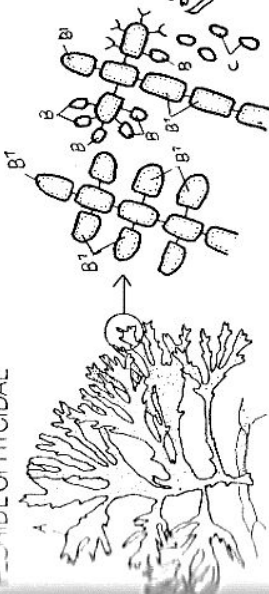


RED ALGAE INTRODUCTION.

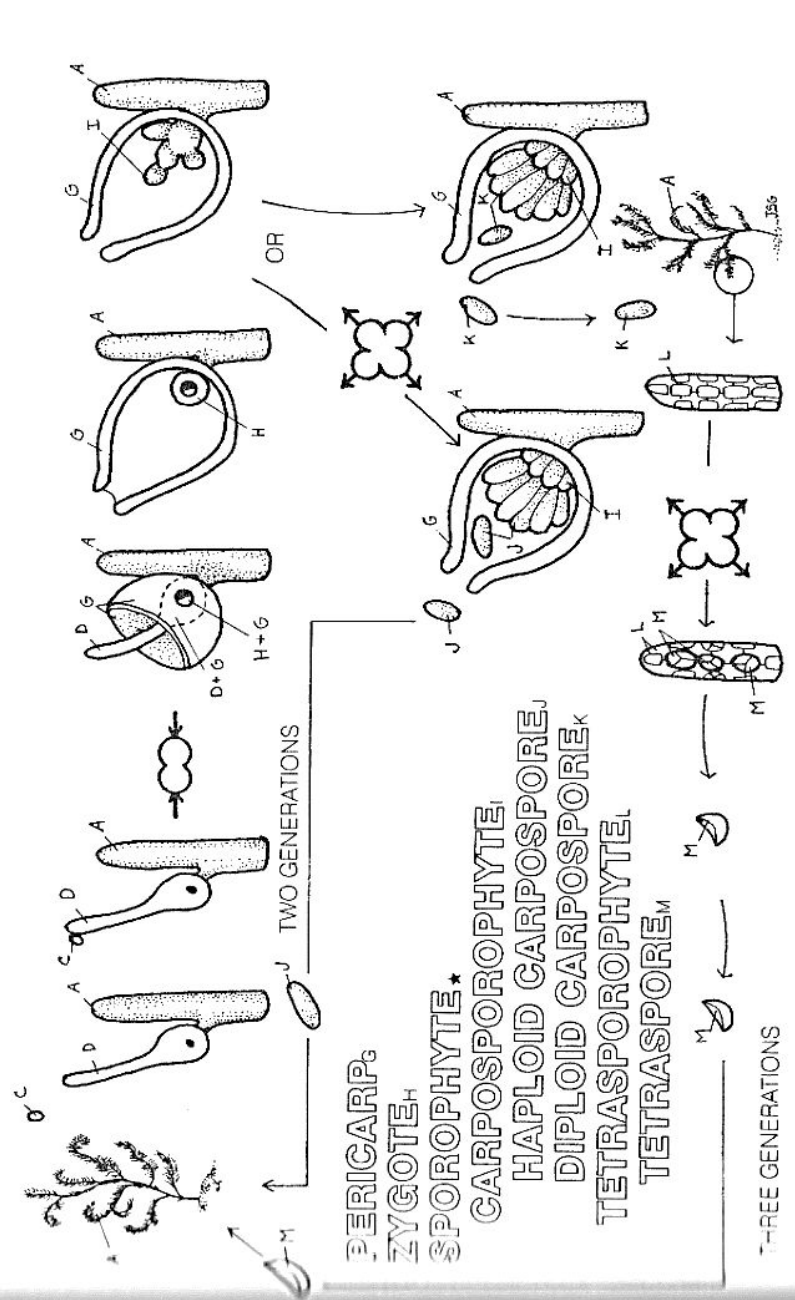
- GAMETOPHYTE_A
- VEGETATIVE CELL_{A'}
- GAMETANGIA*
SPERMATANGIAL_B
SPERMATANGIAL
BRANCH_{B'}
- SPERMATIUM_C
- CARPOGONIUM_D
EGG
- TRICHOGYNE_F



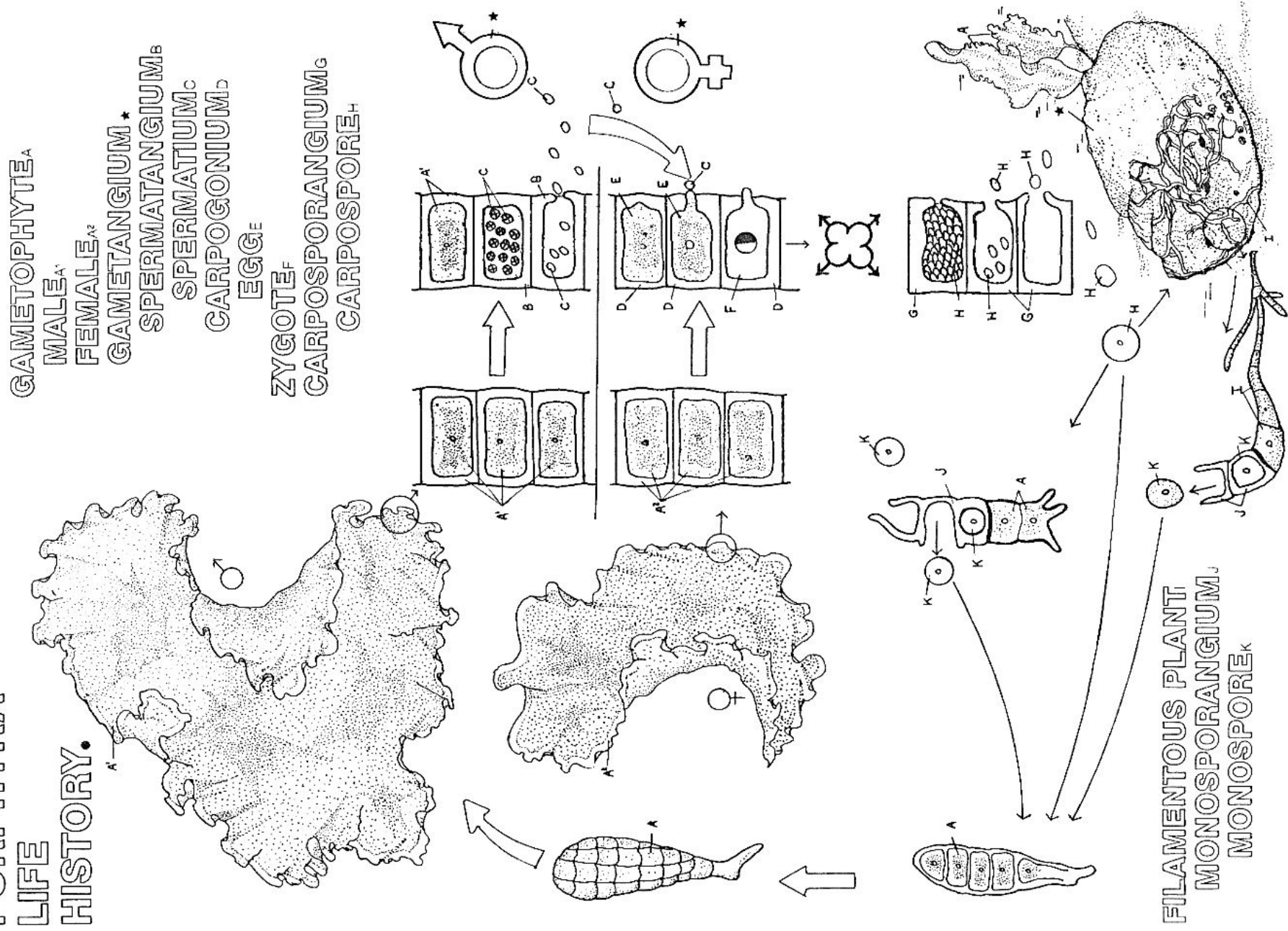
FURCIDEOPHYCIDAE



GENERATIONS*



PORPHYRA
LIFE
HISTORY.



POLYSIPHONIA

LIFE

HISTORY.



GAMETOPHYTE*
MALE^A

SPERMATANGIAL CLUSTER,
SPERMATIUM^B

FEMALE^{A'}

SUPPORT CELL,

CARPOGONIAL CELL,

CARPOGONIUM^D,

PERICARPE

AUXILIARY CELL^F

GONIMOBLAST INITIAL^G

CARPOSPOROPHYTE*

CARPOSPORE^H

TETRASPOROPHYTE,

TETRASPORE^I

