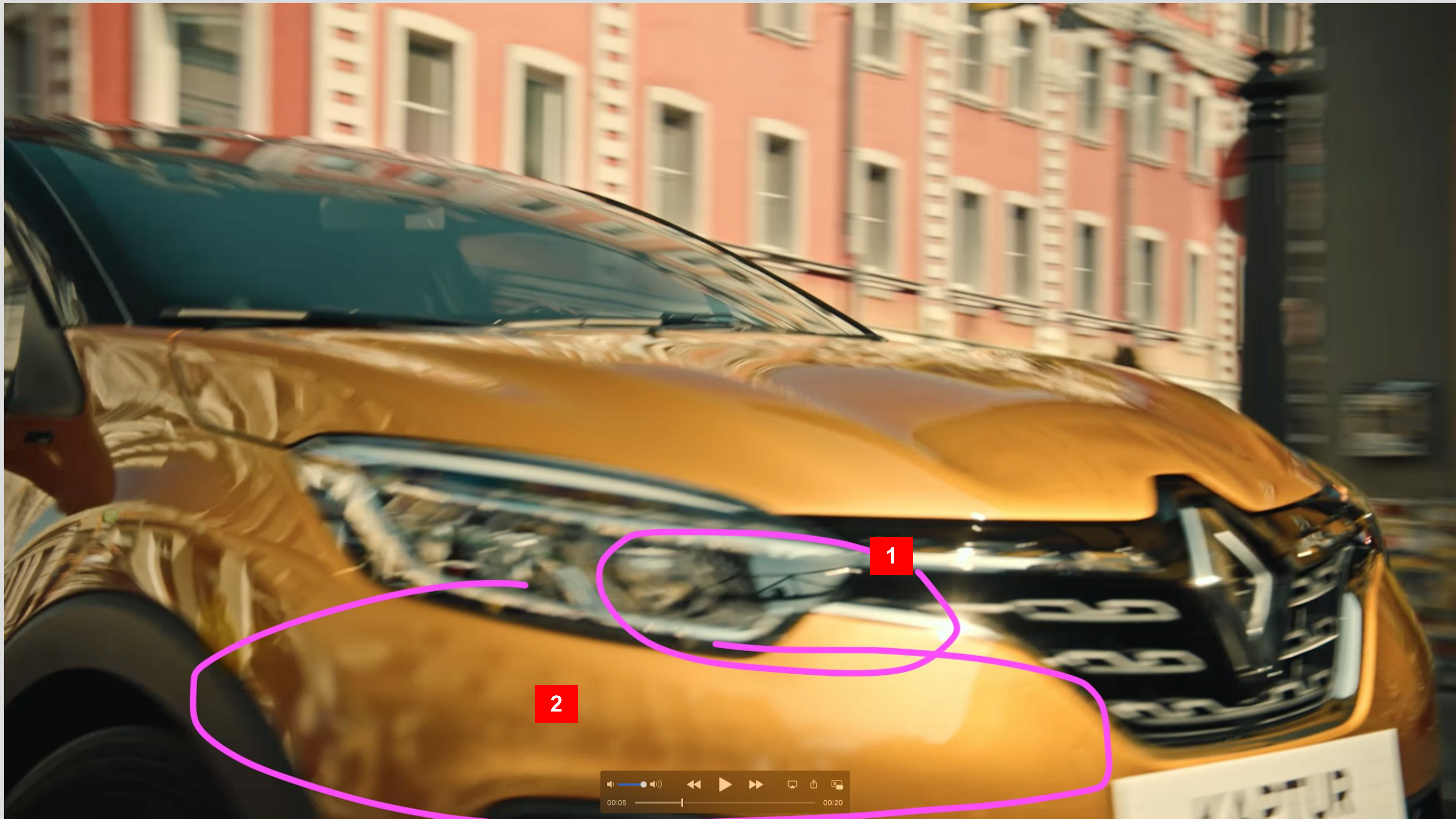


RUSSIA KAPTUR INTENSE LE

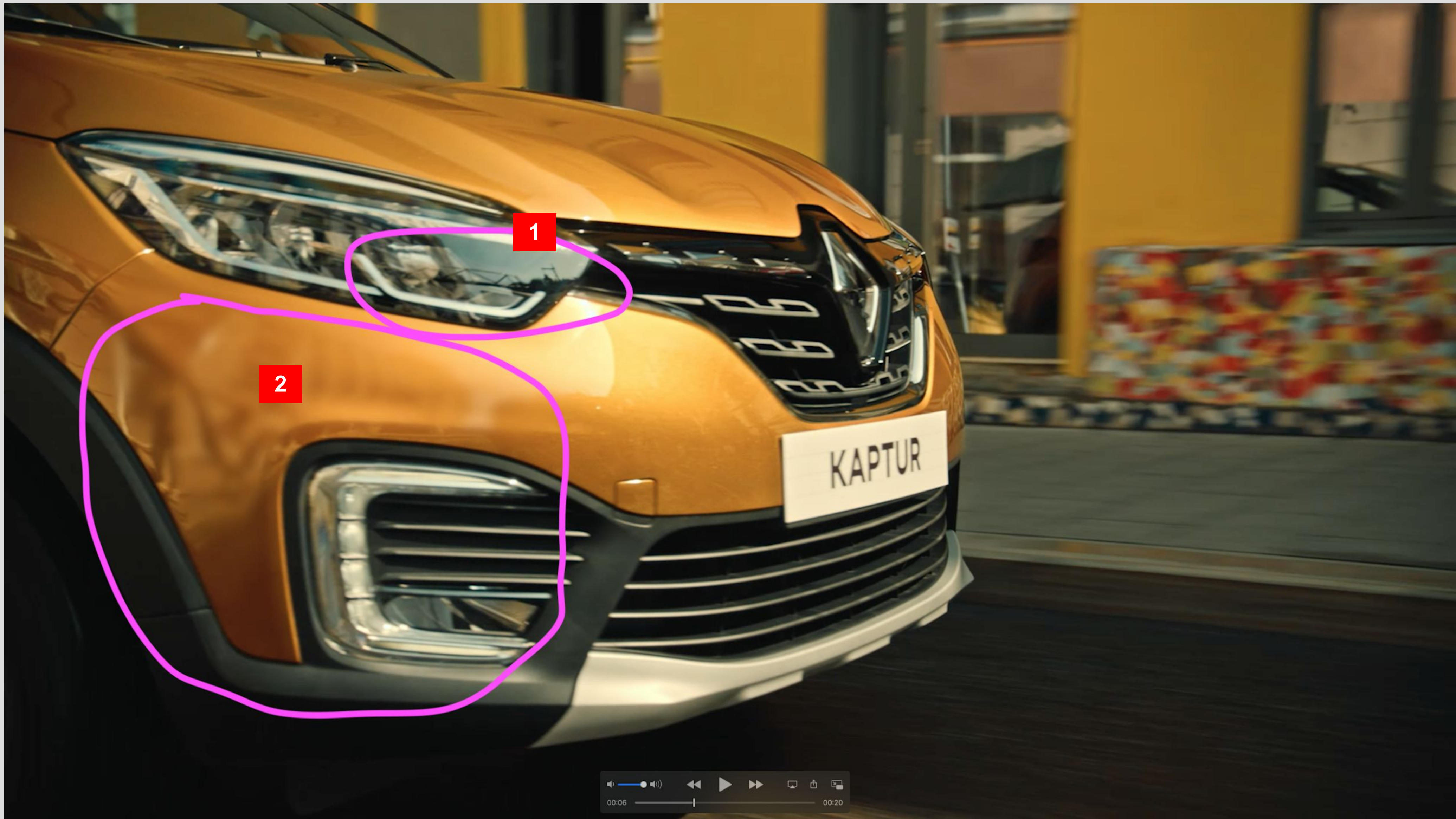
TVC 20' retouch



05.10.21



1. Remained a piece of the crane from the spider arm
(part of the previous comments)
2. The reflection of the spider arm is too blurred and the texture of the car's surface is lost



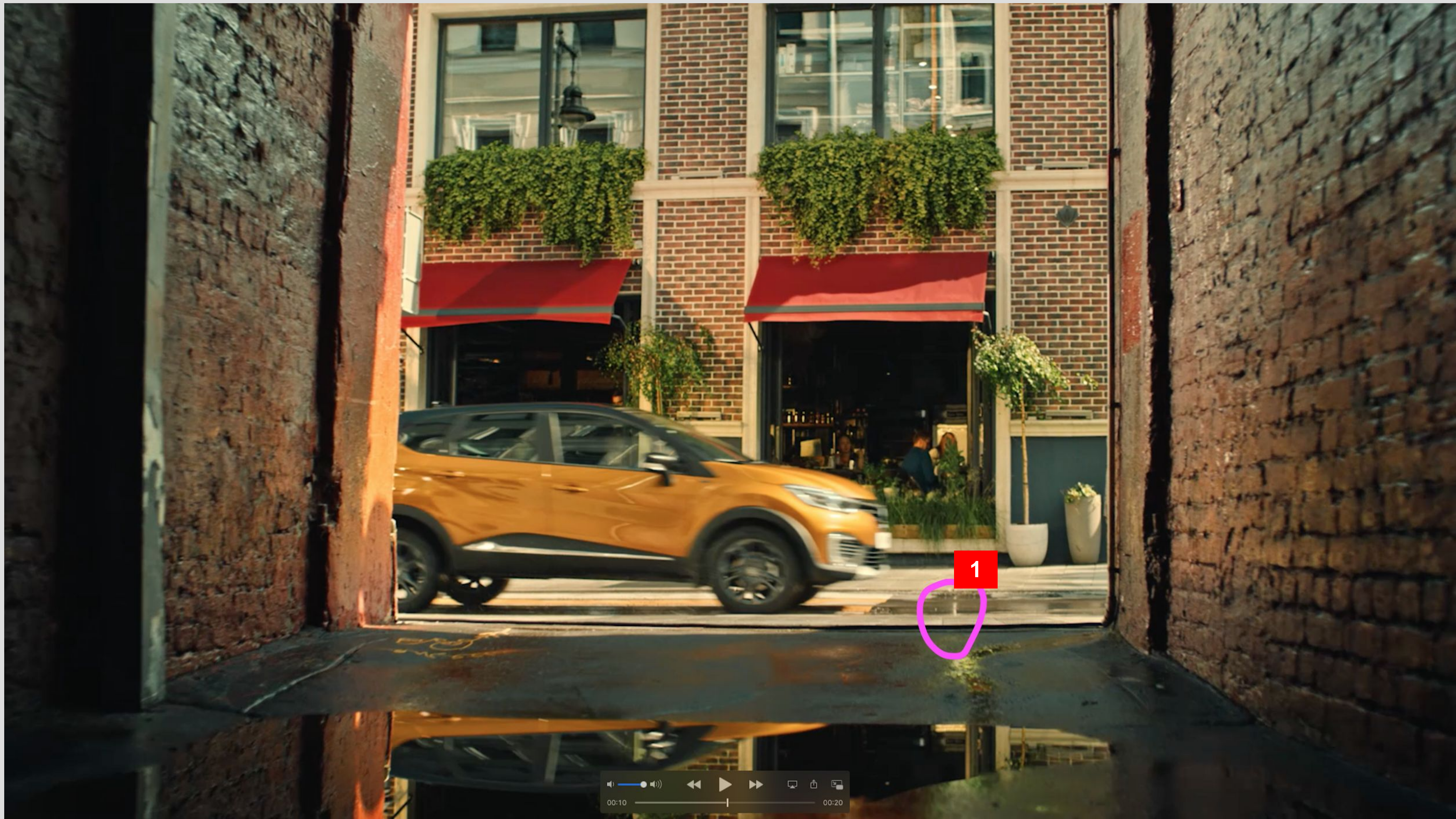
1. Remained a piece of the crane from the spider arm
(part of the previous comments)
2. Too blurred the reflection of the spider arm and passing people and lost the texture of the car's surface



1. Lights visible (part of the previous comments)



1. Lights visible (part of the previous comments)



1. There is a part of the leg of the road sign (part of the previous comments)



1. A car with a spider arm is visible (part of the previous comments)
2. Some horror angle of an unknown car was inserted into the screen with the advertisement - can we use something neutral there? Sky, video of the city?

- Can we just a little bit enhance a color of Actress eyes?
- Frames we've shot on chromakey → integration is not good for the moment
- Can we remove a road sign on the Packshot?



MERCI

