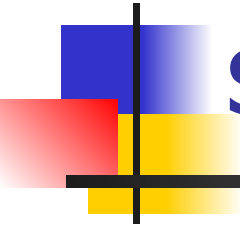


Common principles of purulent surgery



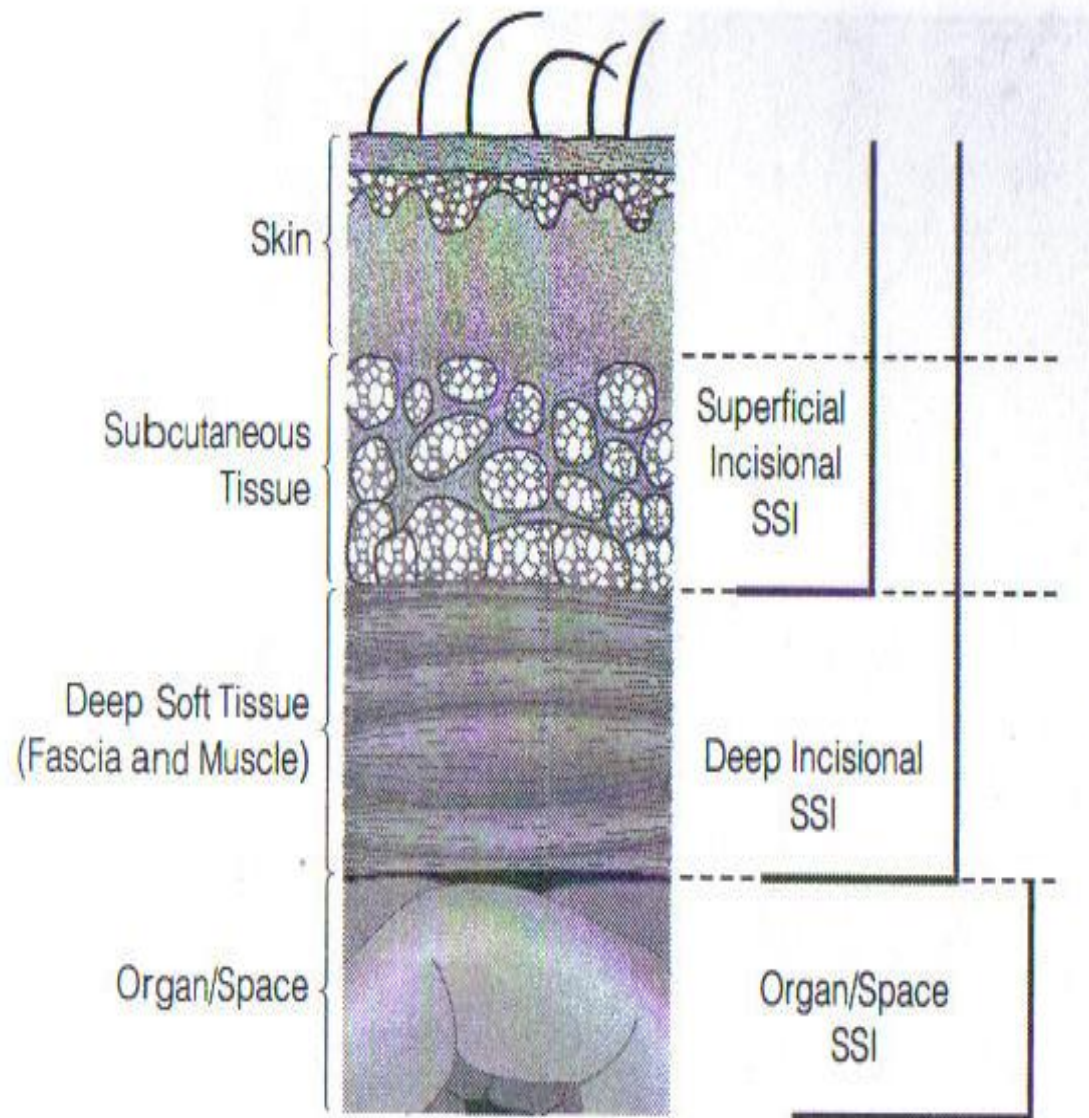
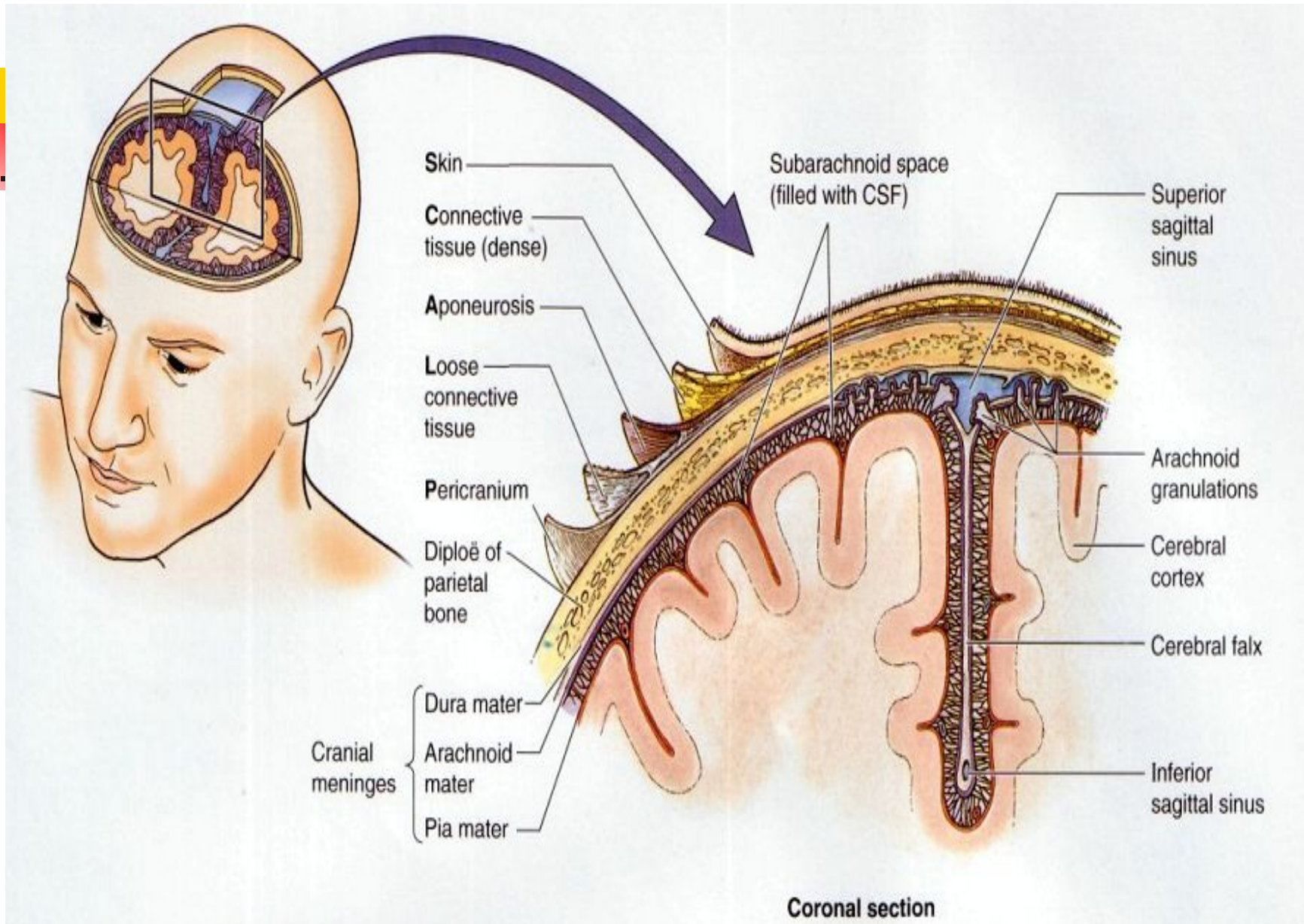
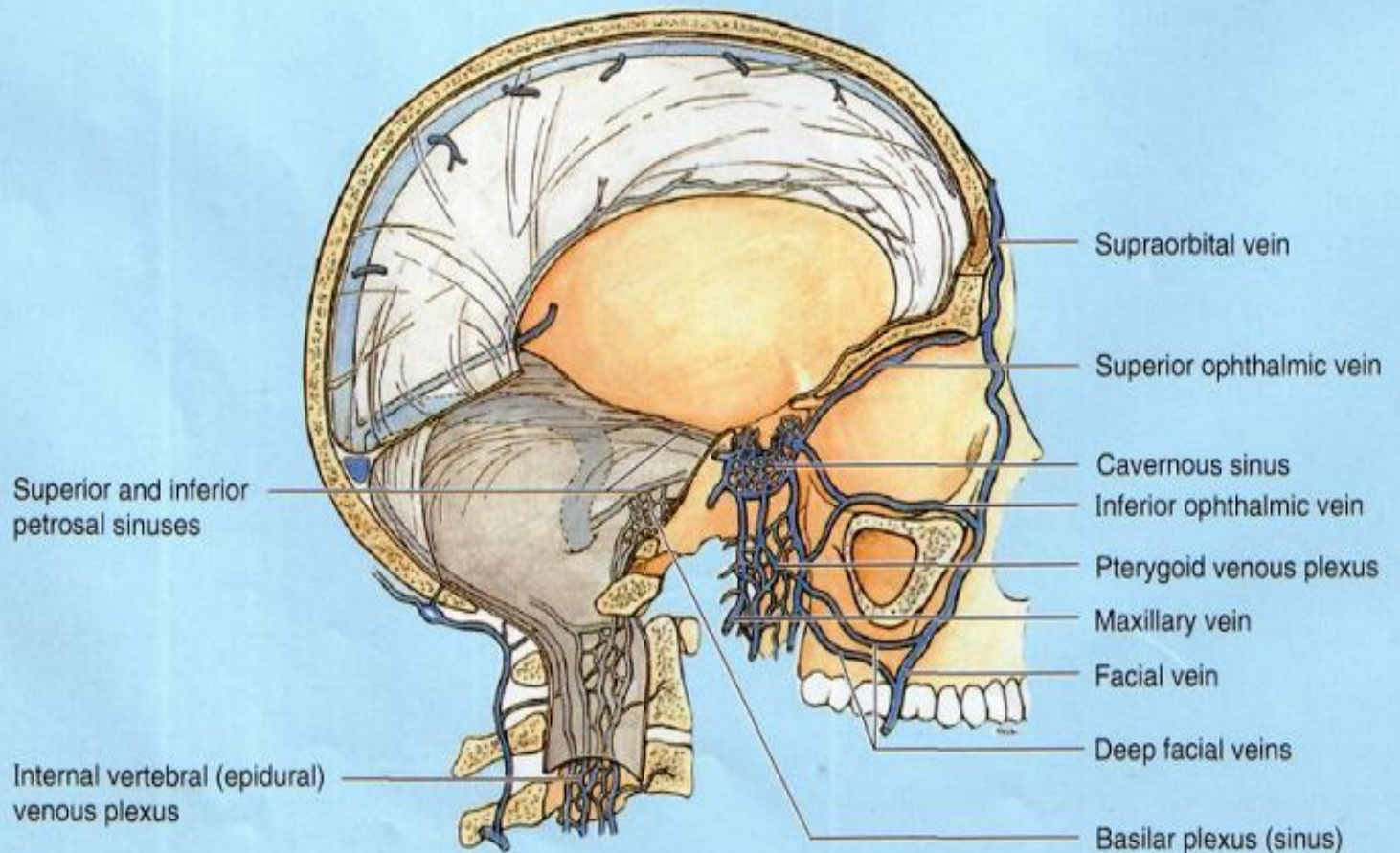


Figure 2 Surgical site infections are classified into three categories, depending on which anatomic areas are affected.³



Thrombophlebitis of the Facial Vein

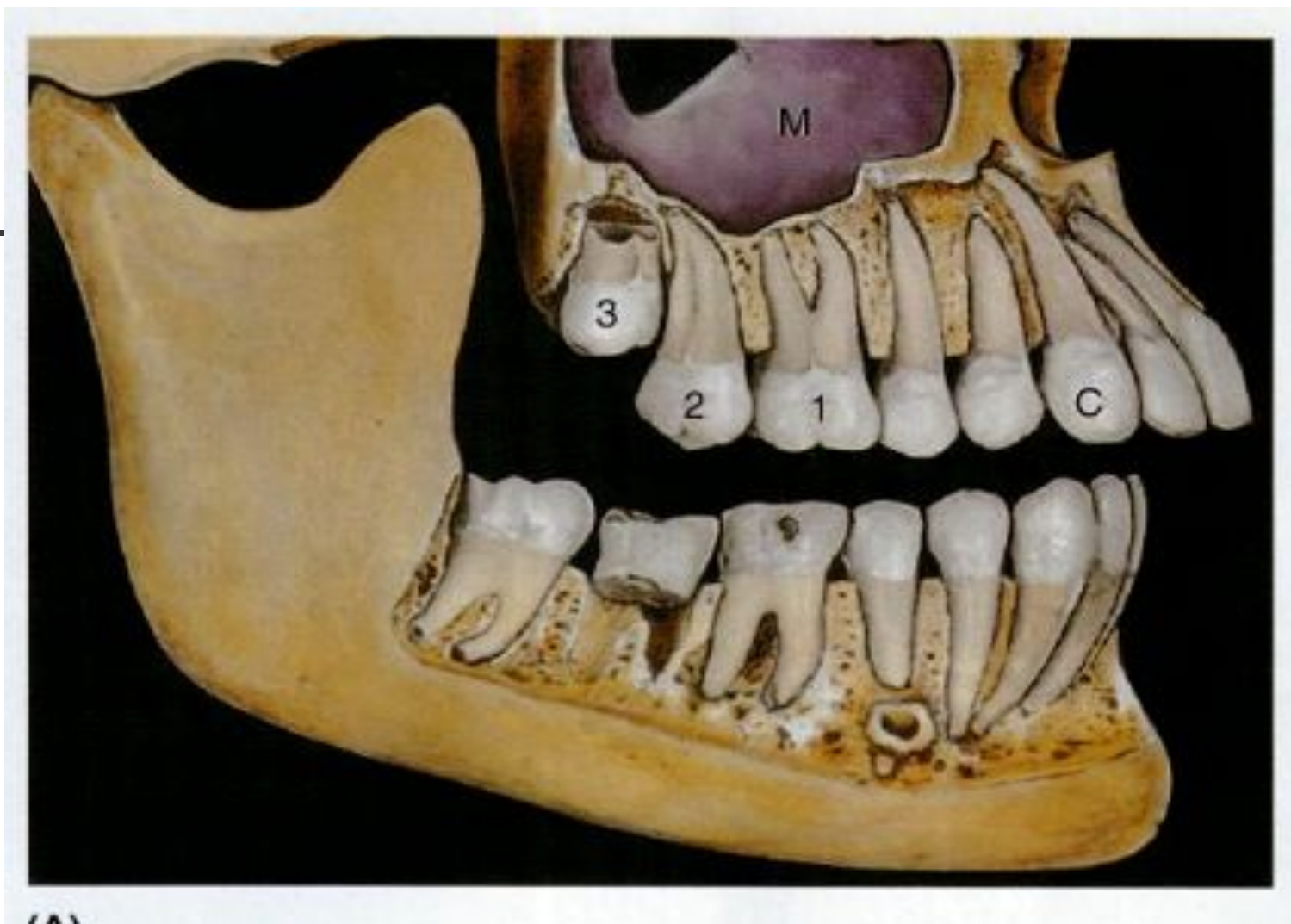
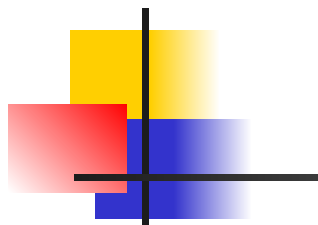


(A)

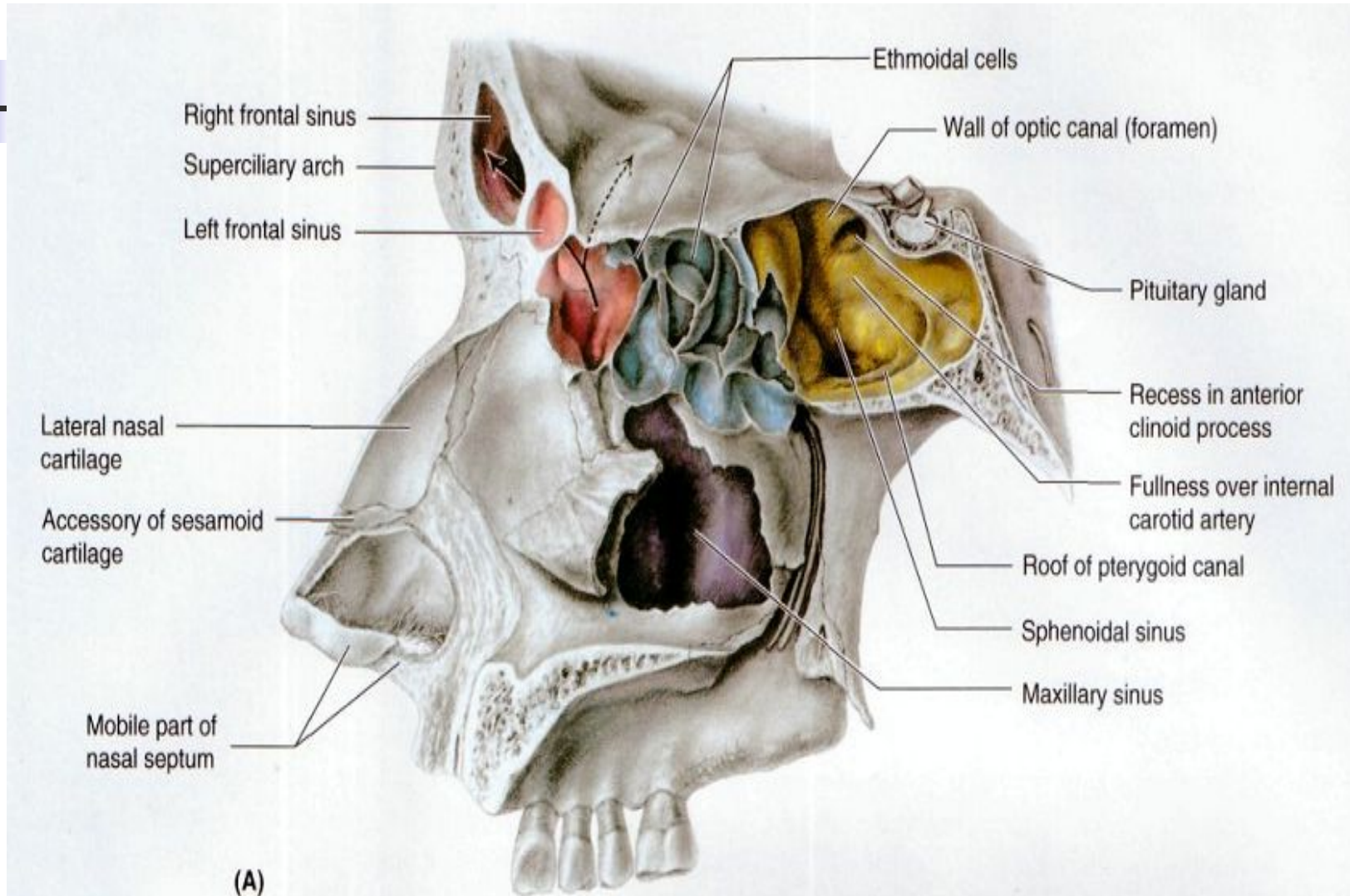


Danger triangle
of the face

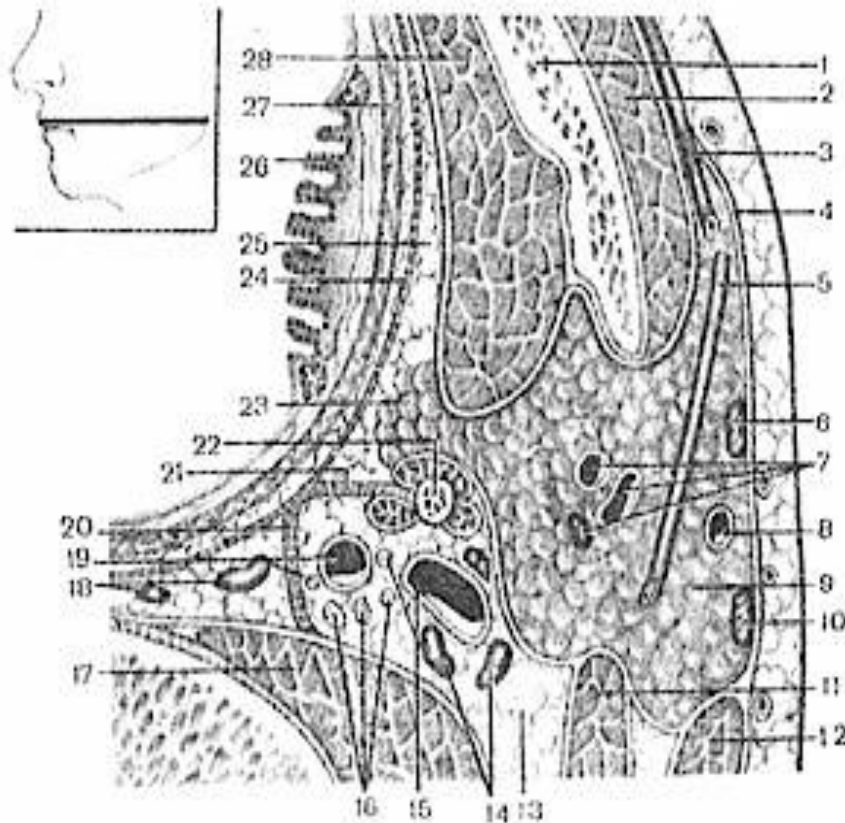




Paranasal sinuses



Parapharyngeal space

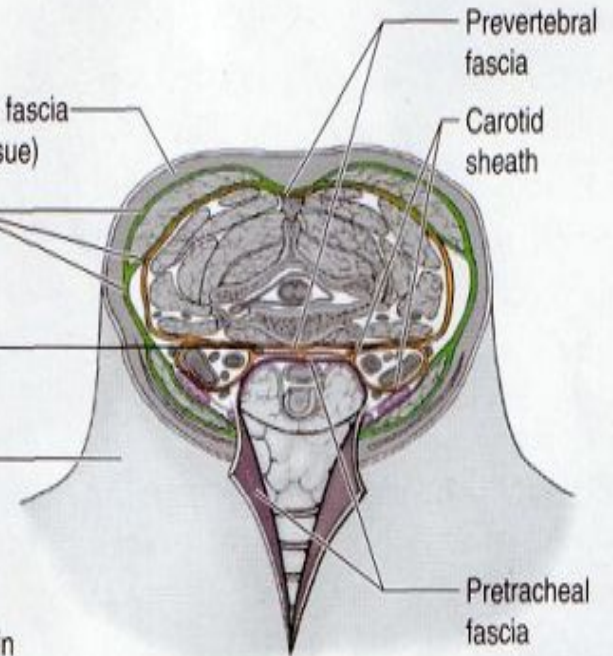


- 1 — mandibula; 2 — m. masseter; 3 — ductus parotideus; 4 — fascia masseterica; 5 — n. facialis; 6, 10 — nodi lymphatici parotidiei superficiales; 7 — a. facialis, v. retromandibularis и nodus lymphaticus parotidiei profundus; 8 — v. jugularis externa; 9 — gl. parotis; 11 — m. digastricus; 12 — m. sternocleidomastoideus; 13 — задний отдел окологлоточного пространства; 14 — верхняя группа глубоких шейных лимфатических узлов; 15 — v. jugularis interna и n. glossopharyngeus; 16 — верхний шейный узел симпатического ствола, n. vagus и n. accessorius; 17 — предпозвоночные мышцы и покрывающая их предпозвоночная фасция; 18 — nodi lymphatici retropharyngeales и spatium retropharyngeum; 19 — a. carotis interna и n. hypoglossus; 20 — глоточно-позвоночный апоневроз (перегородка Шарли); 21 — шилоглоточный апоневроз; 22 — processus styloideus с начинающимися от него мышцами; 23 — глоточный отросток околоушной железы; 24 — глоточно-основной апоневроз; 25 — передний отдел окологлоточного пространства; 26 — tonsilla palatina; 27 — m. constrictor pharyngis superior; 28 — m. pterygoideus medialis.

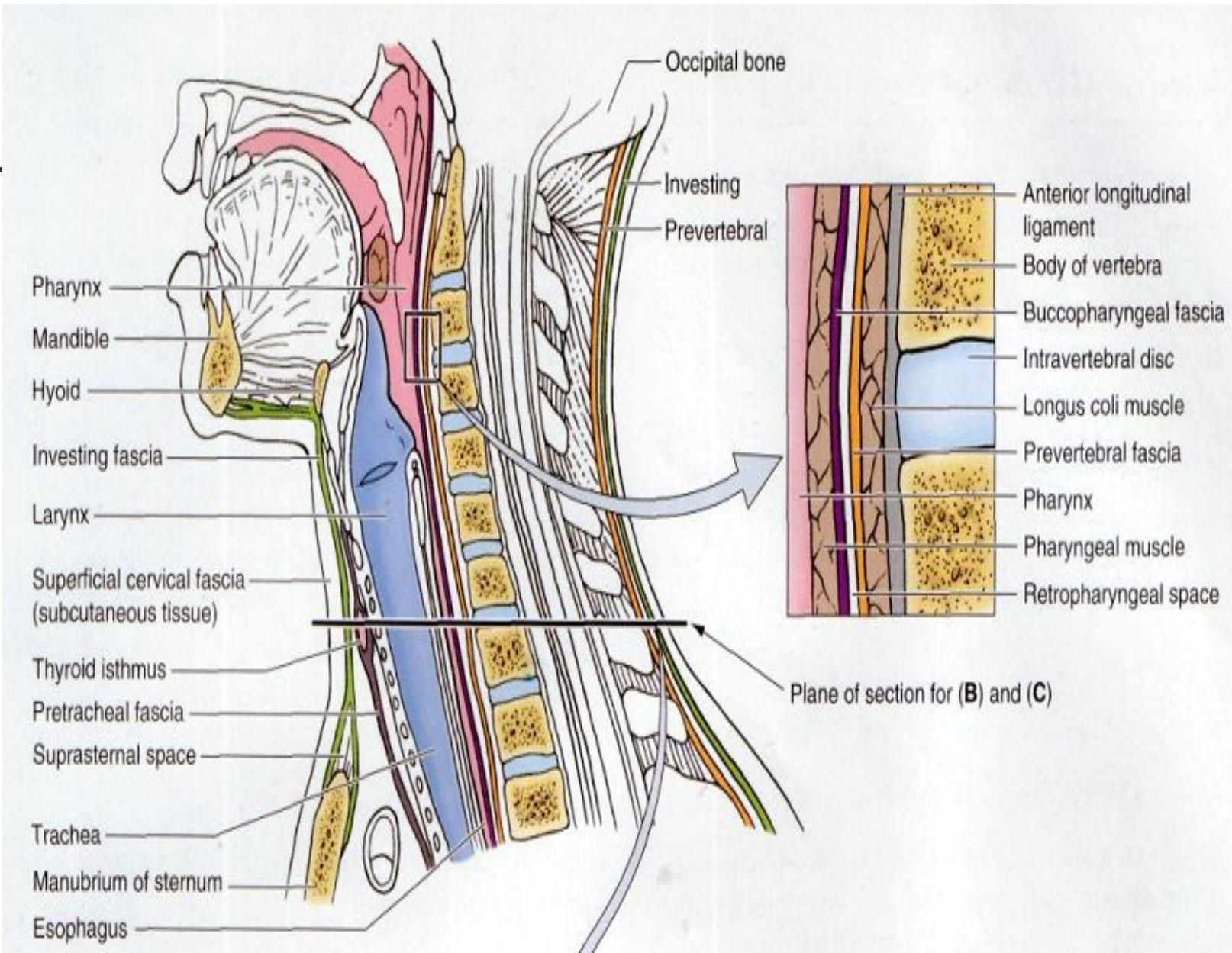


- Nuchal ligament
- Vertebral arch of cervical vertebra
- Prevertebral fascia
- Trapezius
- Middle scalene
- Lymph node
- Anterior scalene
- Longus colli
- Alar fascia
- Omohyoid
- Sternocleidomastoid
- Sternothyroid
- Sternohyoid
- Pretracheal fascia
- Superficial cervical fascia (subcutaneous tissue)
- Investing layer of deep cervical fascia
- Retropharyngeal space
- Skin
- Carotid sheath
- Vagus nerve
- Internal jugular vein
- Common carotid artery
- Esophagus
- Platysma
- Thyroid gland
- Trachea
- Investing fascia

(B) Superior view of transverse section (at level of C7 vertebra)



(C) Anterosuperior view (of B)



Complications of retropharyngeal abscess



Figure 1. Radiograph of soft tissue neck (lateral view) showing air fluid level in the retropharyngeal space.

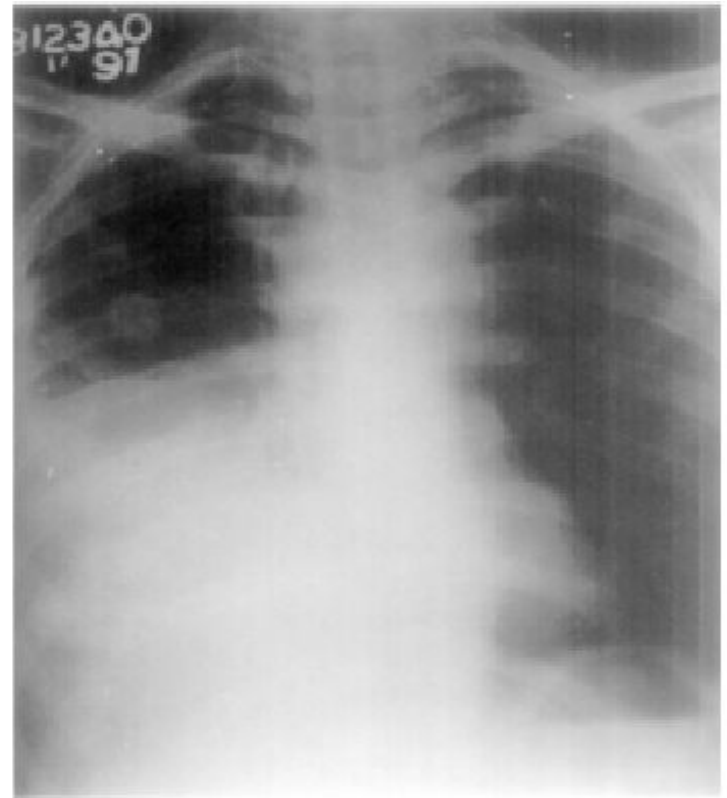
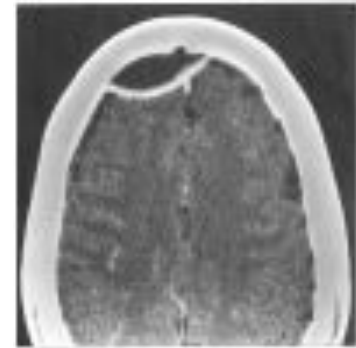
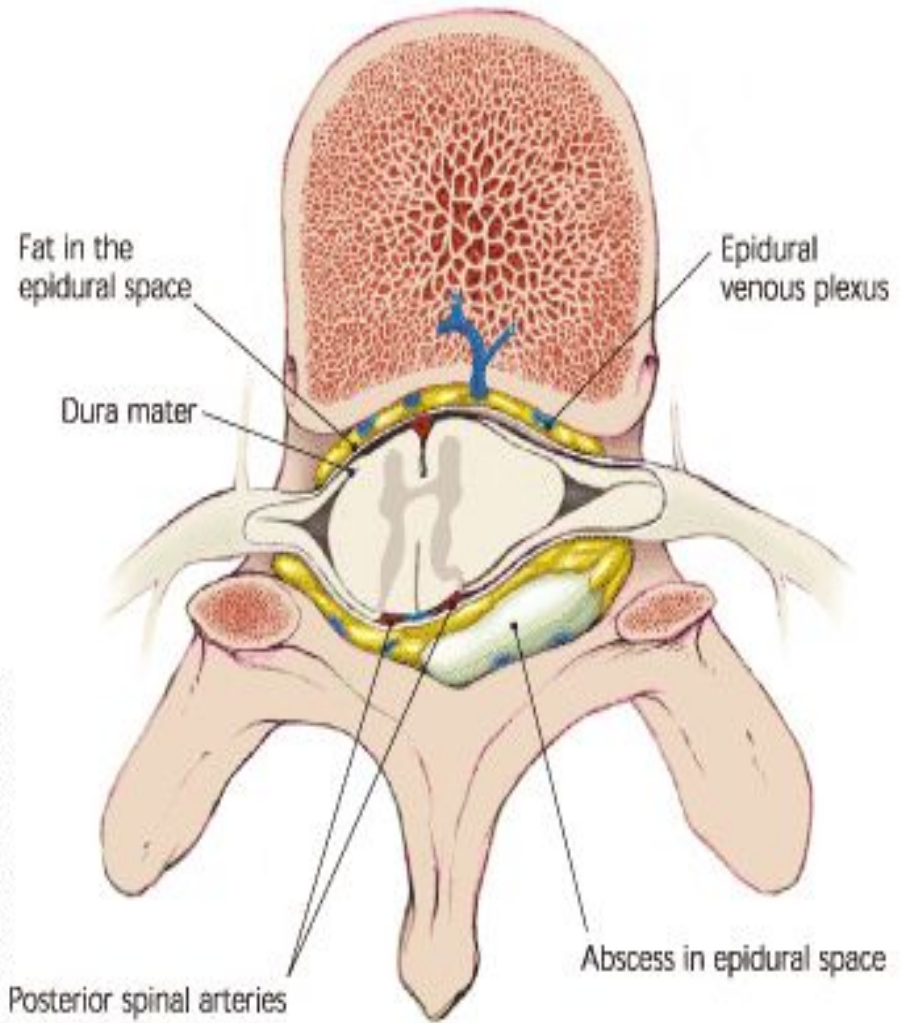
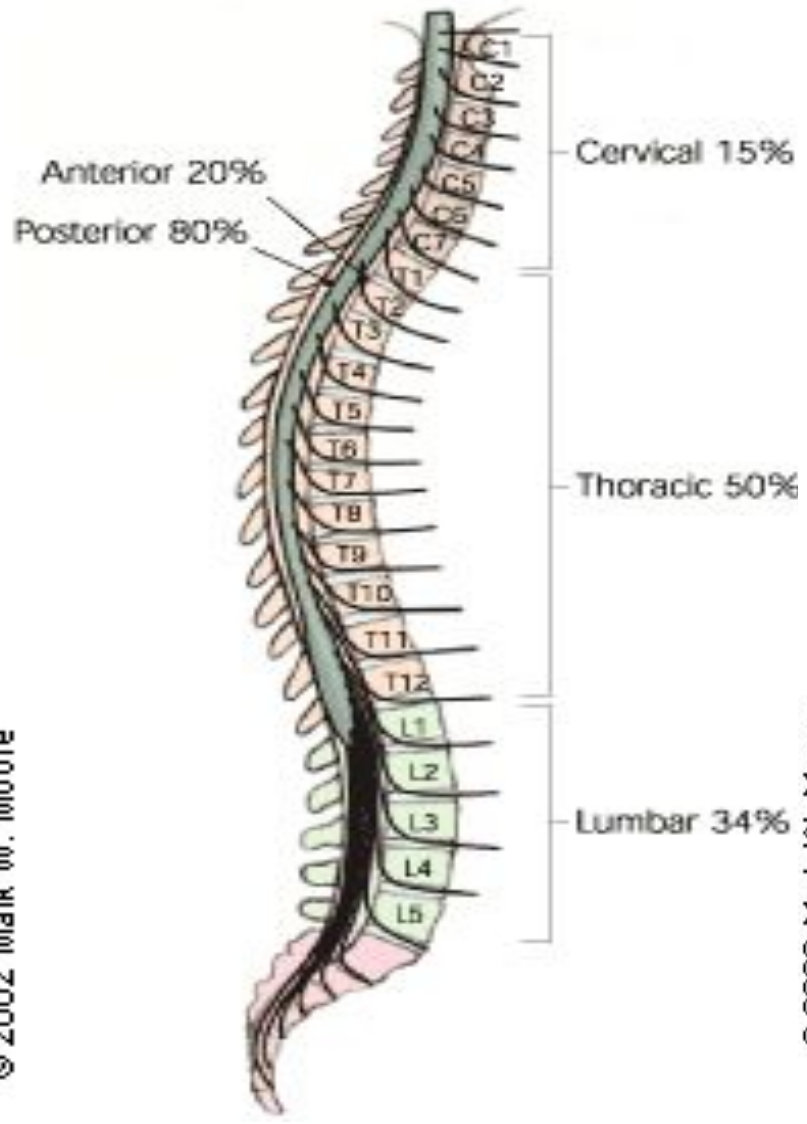
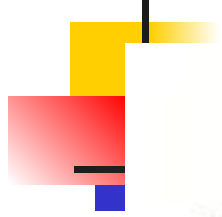


Figure 2. Chest radiograph (postero-anterior view) showing pyothorax in the right lower chest and mediastinum.

EPIDURAL ABSCESSSES

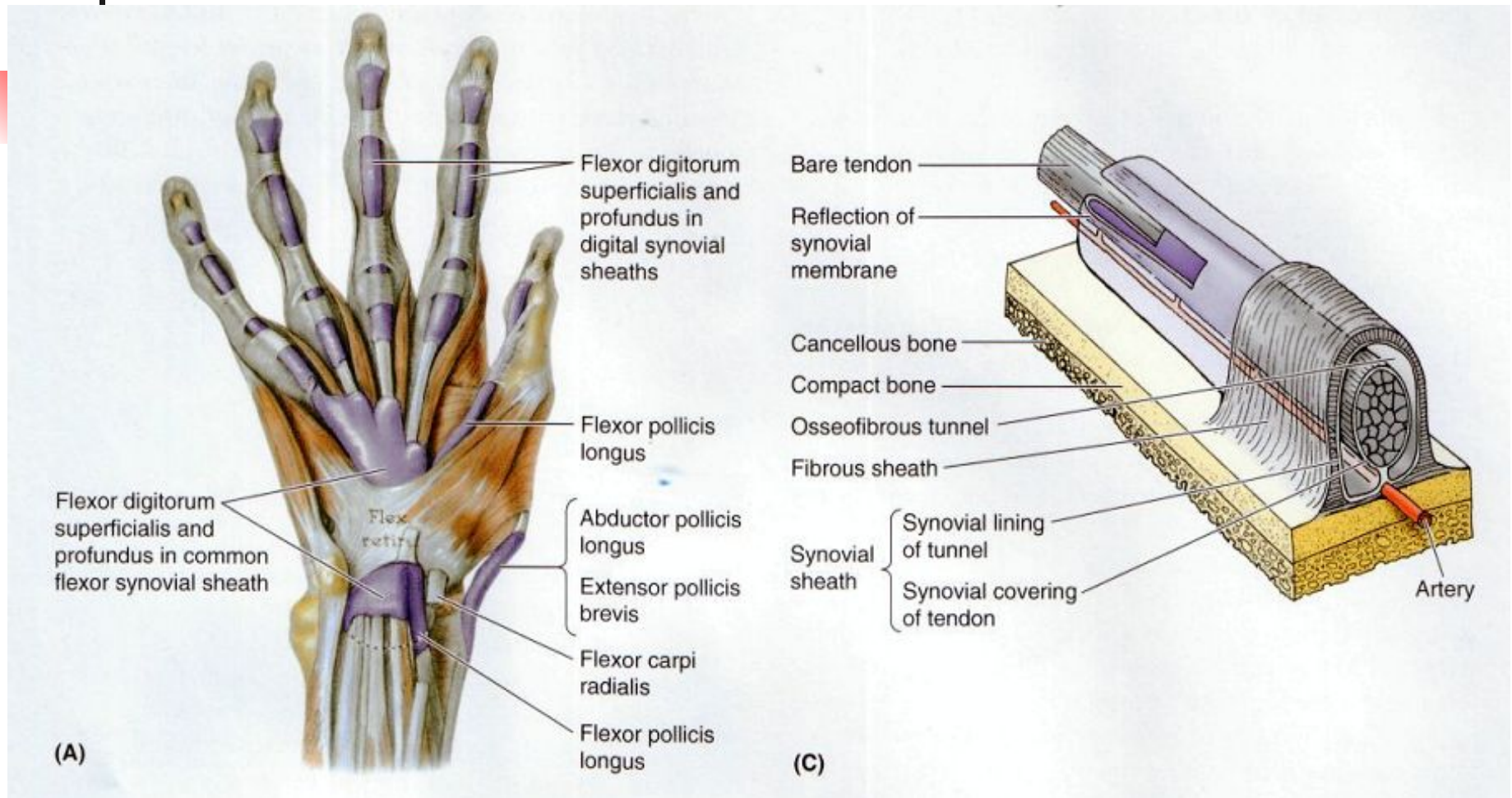
- Spinal > intracranial (9:1)
- Intracranially, the dura is adherent to bone
- True spinal epidural space is present posteriorly throughout the spine, thus posterior longitudinal spread of infection is common.
 - Anterior spinal epidural very rare (usually below L1 & cervical)





© 2002 Mark W. Moore

© 2002 Mark W. Moore



Key

■ Synovial sheath

Flexor digitorum profundus tendon

Flexor digitorum superficialis tendon

Fibrous flexor digital sheath and synovial sheath (opened)

Common flexor sheath (ulnar bursa)

Flexor digitorum superficialis tendons

Common flexor sheath

Anular and cruciform parts of digital fibrous sheath cover digital synovial sheath

Lumbrical muscles in sheaths (cut)

Sesamoid bone (deep)

Digital synovial sheath

Flexor pollicis longus tendon in synovial sheath

Flexor digitorum profundus tendons

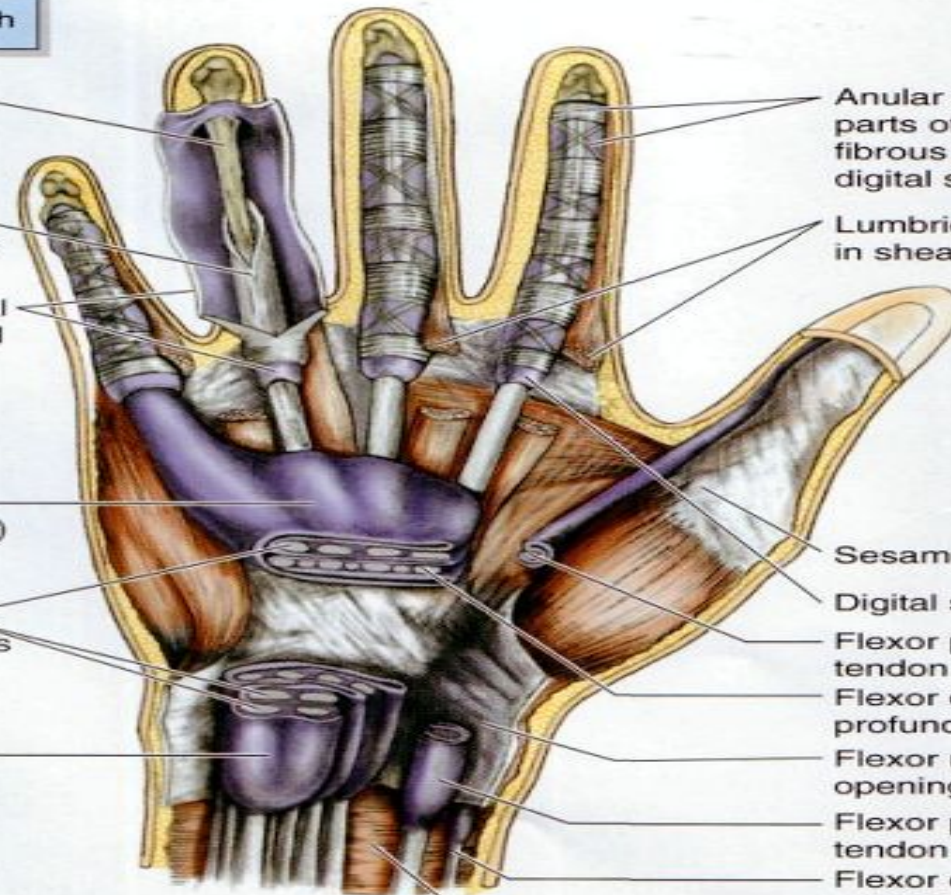
Flexor retinaculum (cut, opening carpal tunnel)

Flexor pollicis longus tendon in synovial sheath

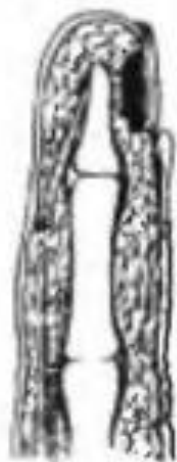
Flexor carpi radialis tendon

Pronator quadratus muscle

(B)



Whitlow types



1



2



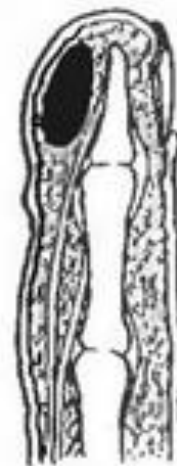
3



4



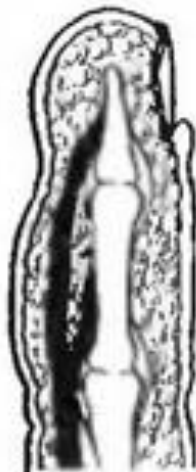
5



6



7



8



9



10



11



12

FireAiD - все по
медицине.

FireAiD - все по
медицине.

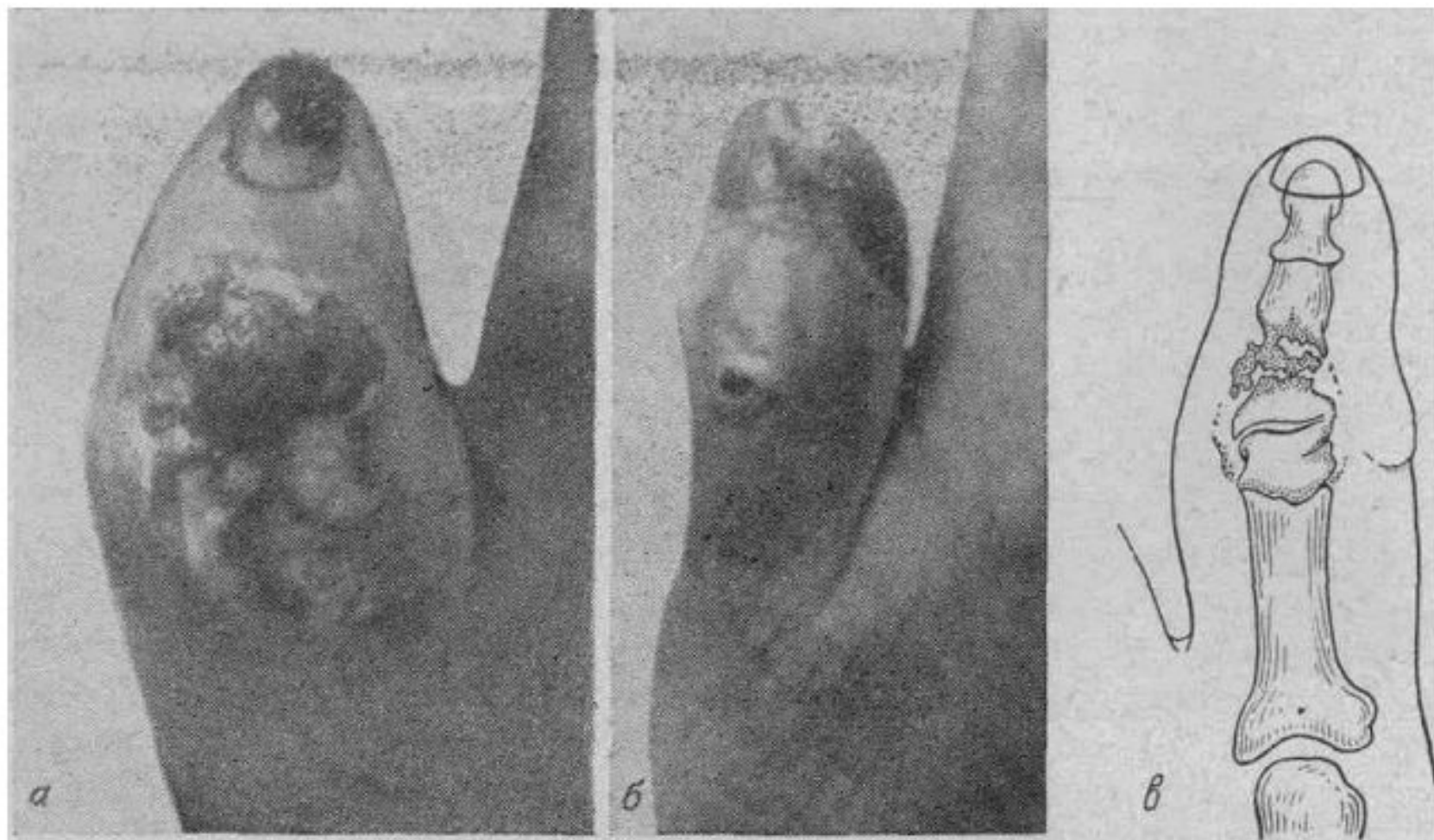
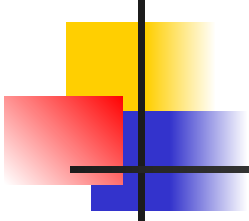
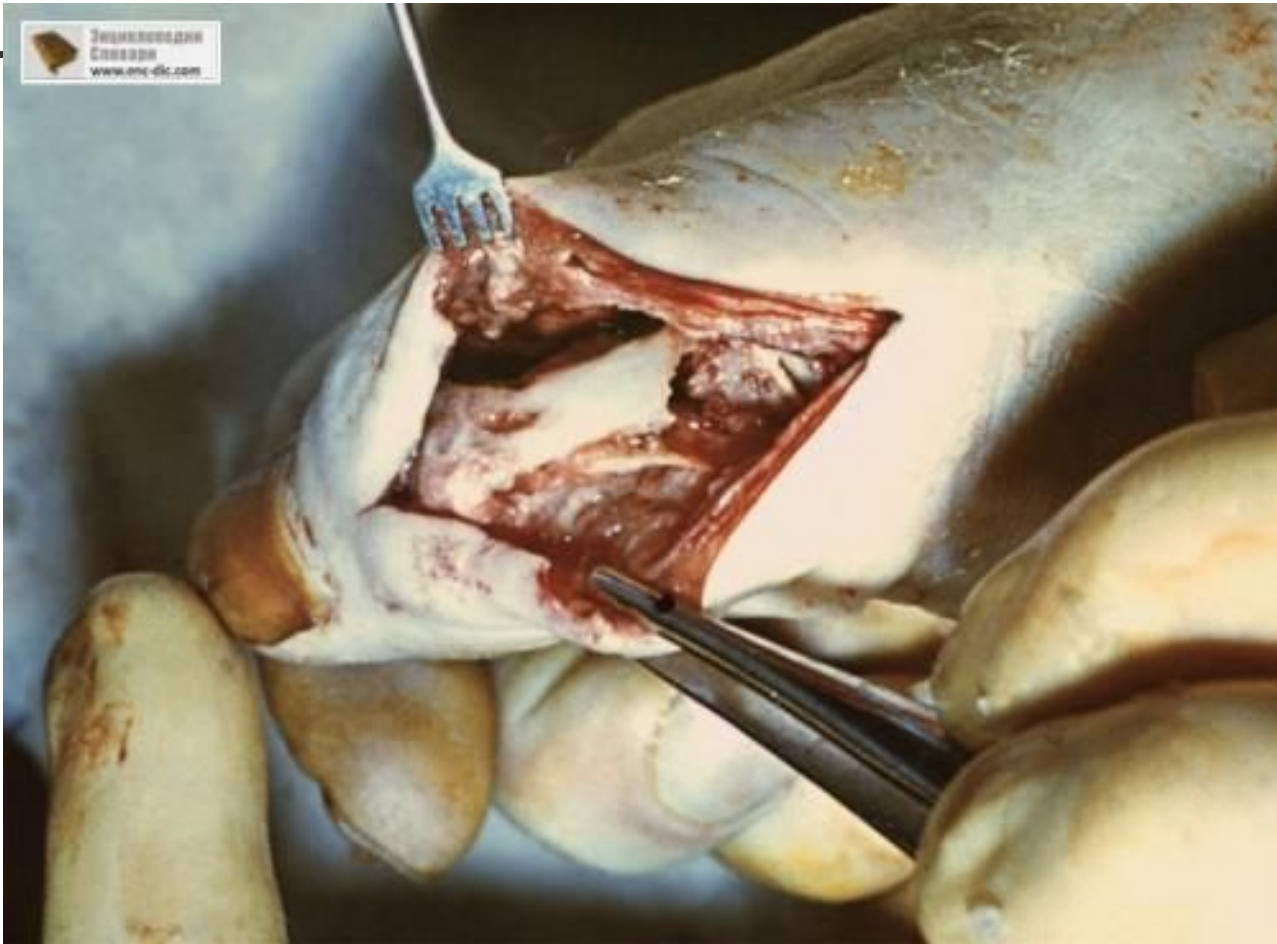


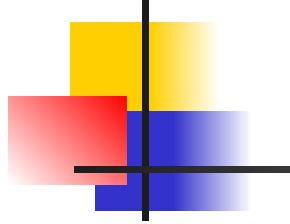
Рис 30 Пандактилит I пальца правой кисти

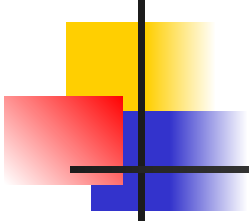
a — вид пальца до операции *б* — вид кисти после снятия гипсовой повязки *в* — схема рентгенограммы



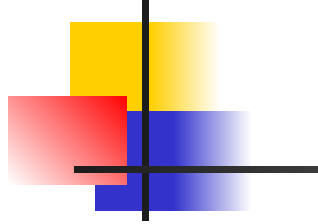
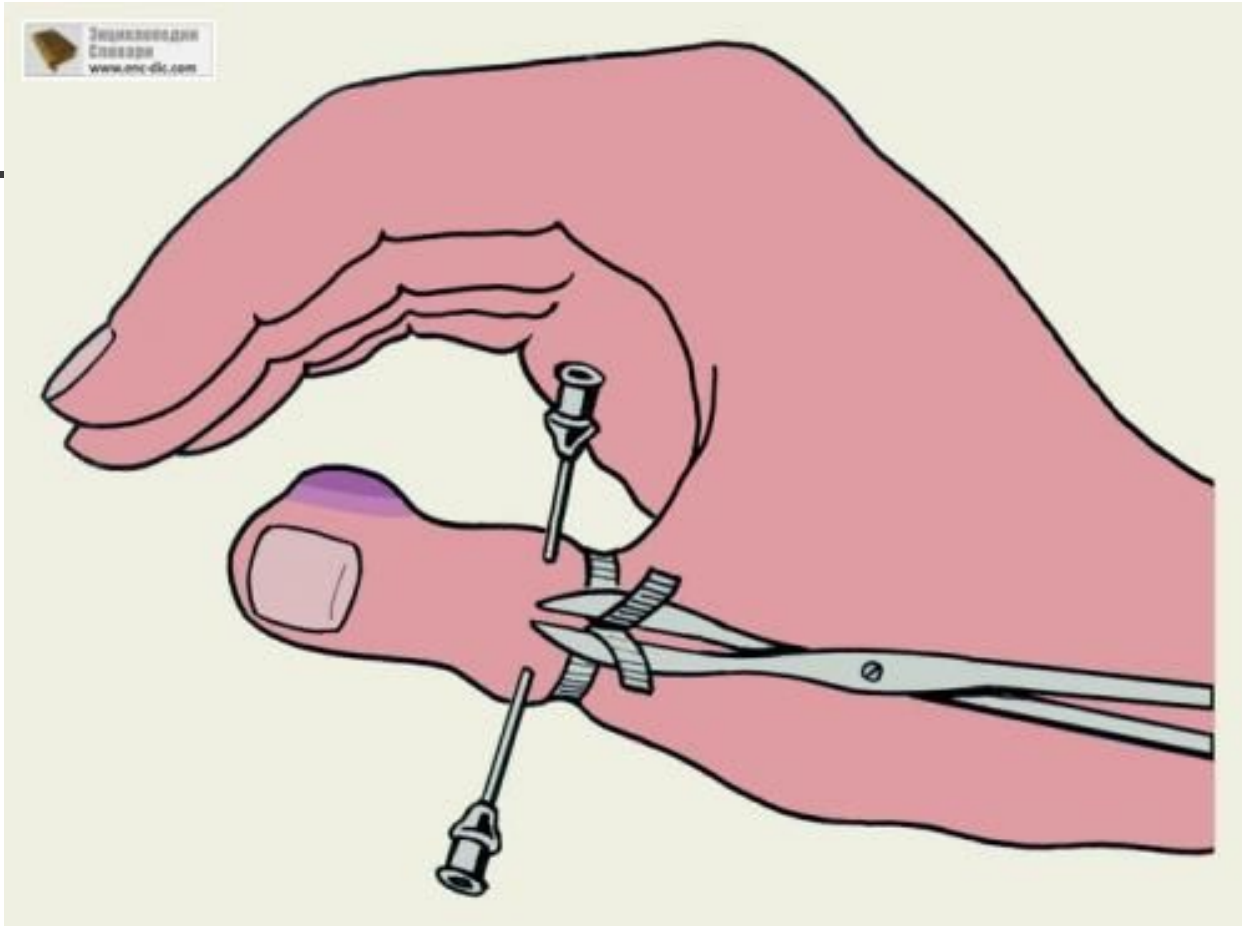


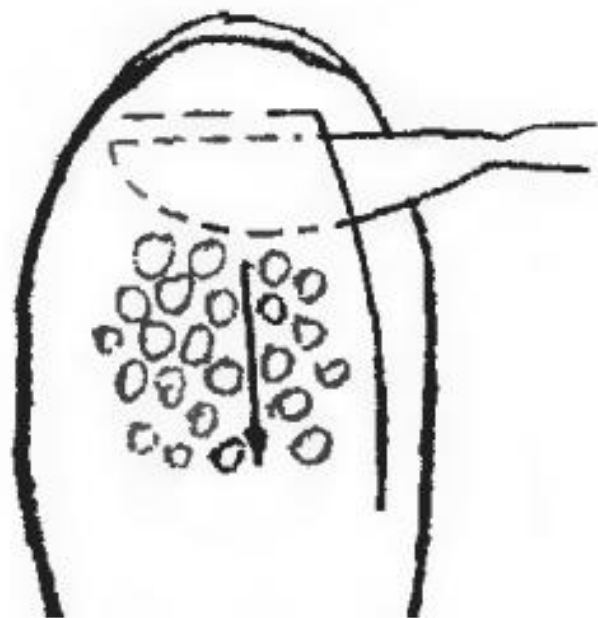
Энциклопедия
Словари
www.encyk.com











FireAiD - все по
медицине.

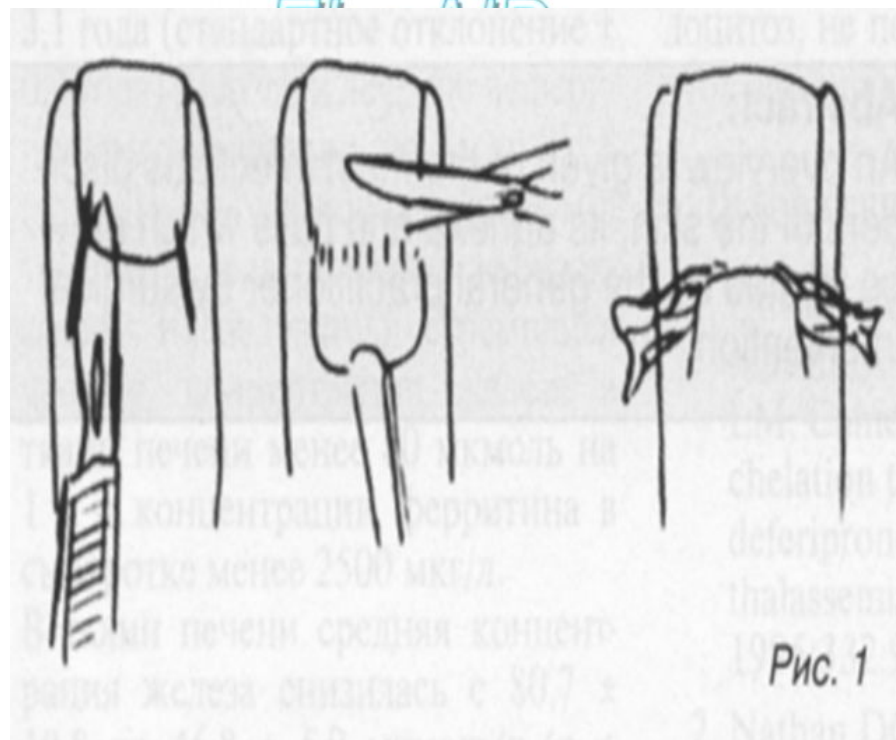
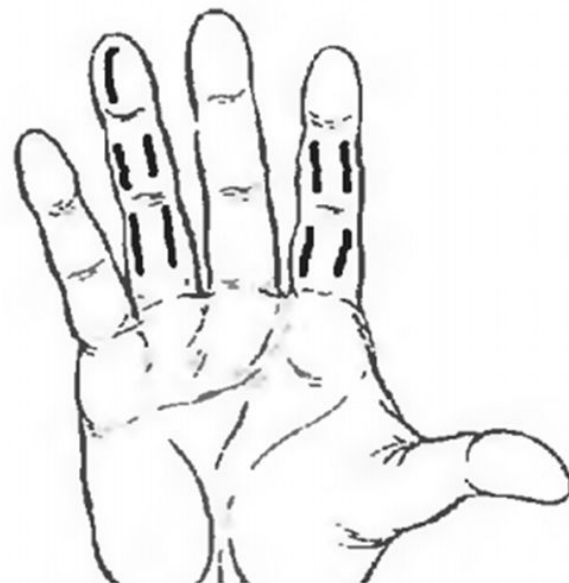


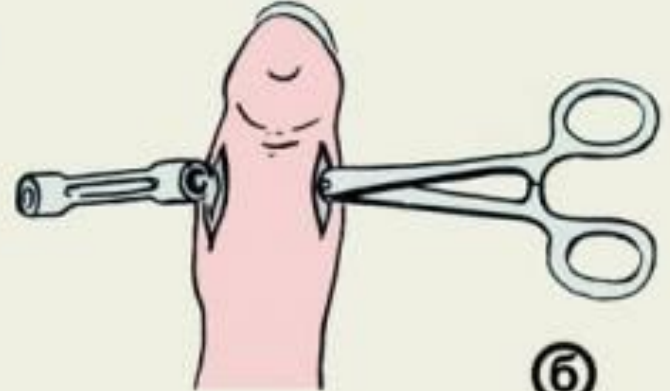
Рис. 1



Рис. 12. Схема операции паронихии.
а — в толще ногтевого валика; б — операция Кеневела.



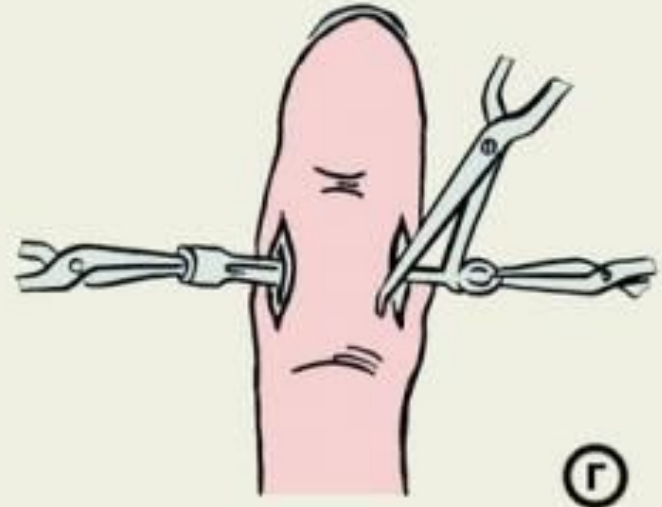
а



б



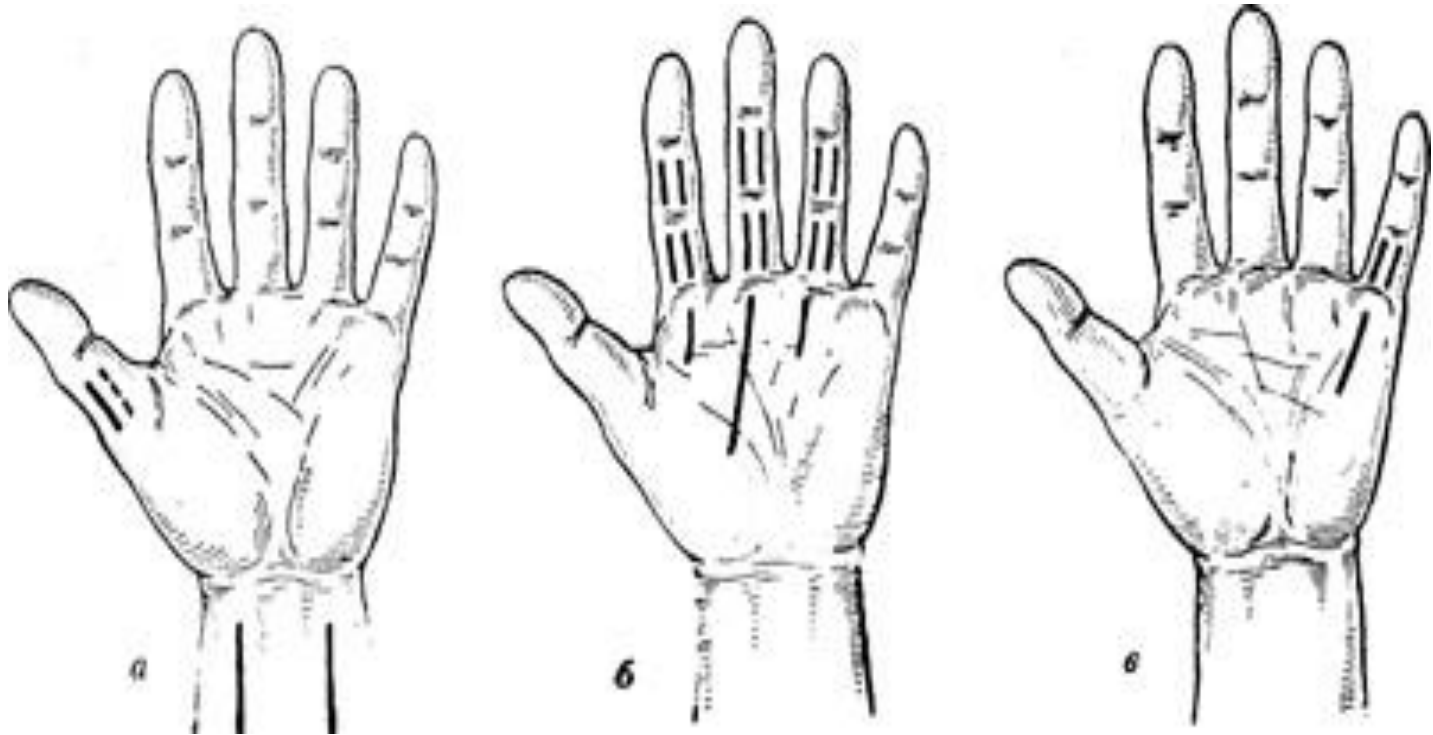
в



г



Incisions



Phlegmons of the hand



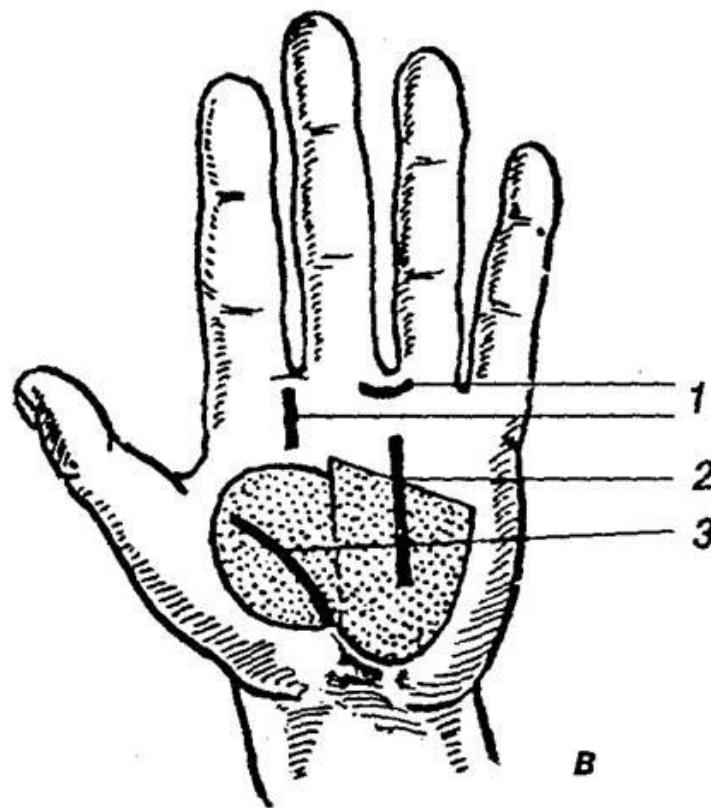
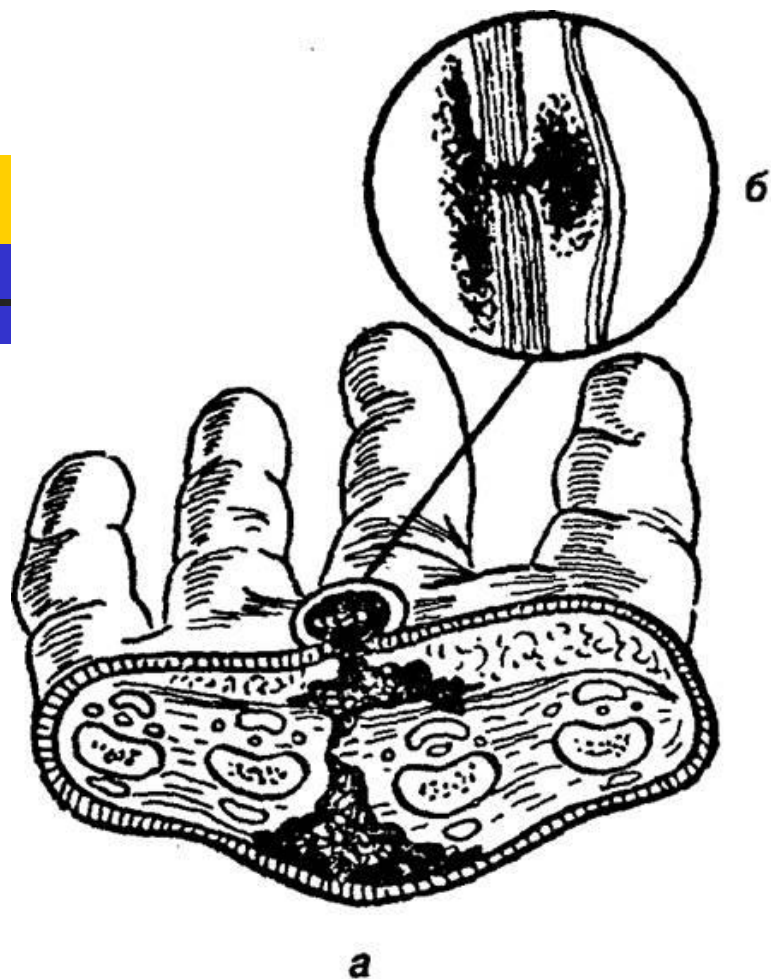
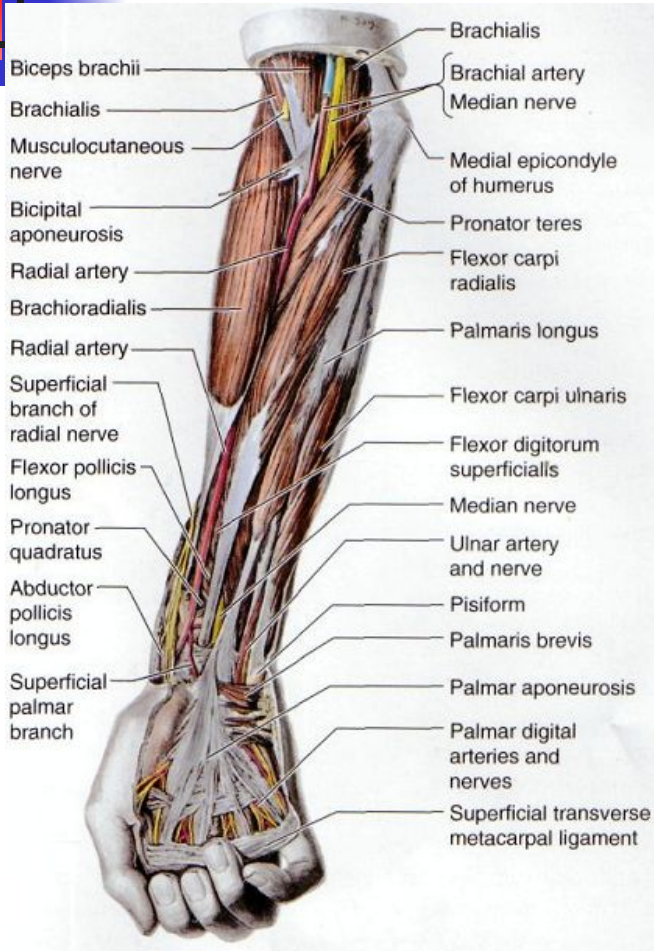


Рис. 3.11. Схема путей распространения инфекции при комиссуральной флегмоне (а, б) и разрезов кожи при флегмонах кисти (в):

1 — при комиссуральных флегмонах; 2 — при флегмоне среднелатерального пространства; 3 — при флегмоне возвышения большого пальца

forearm



Key	
■	Flexor
■	Extensor

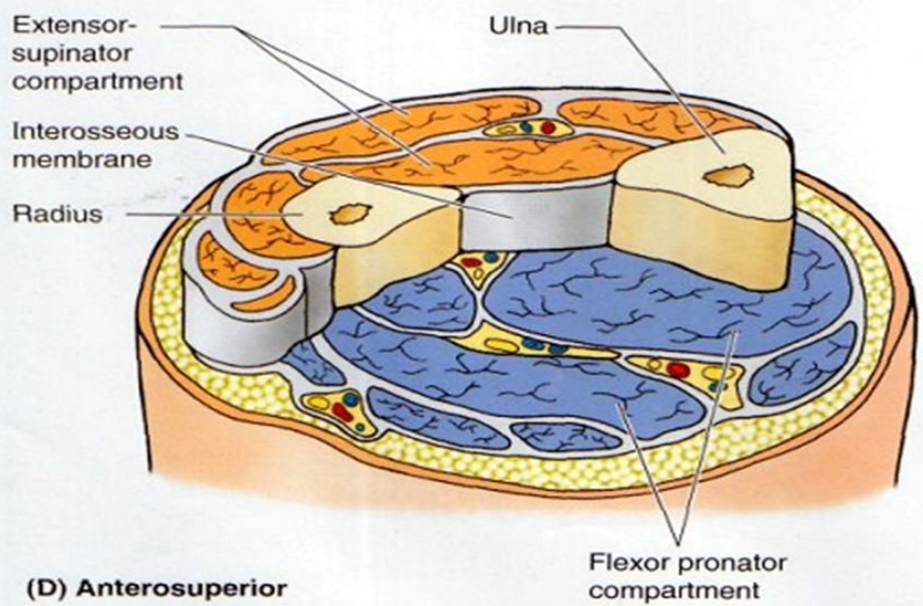




Рис. 3. Газовая гангрена левой верхней конечности после введения "Коаксила" в кубитальную вену.

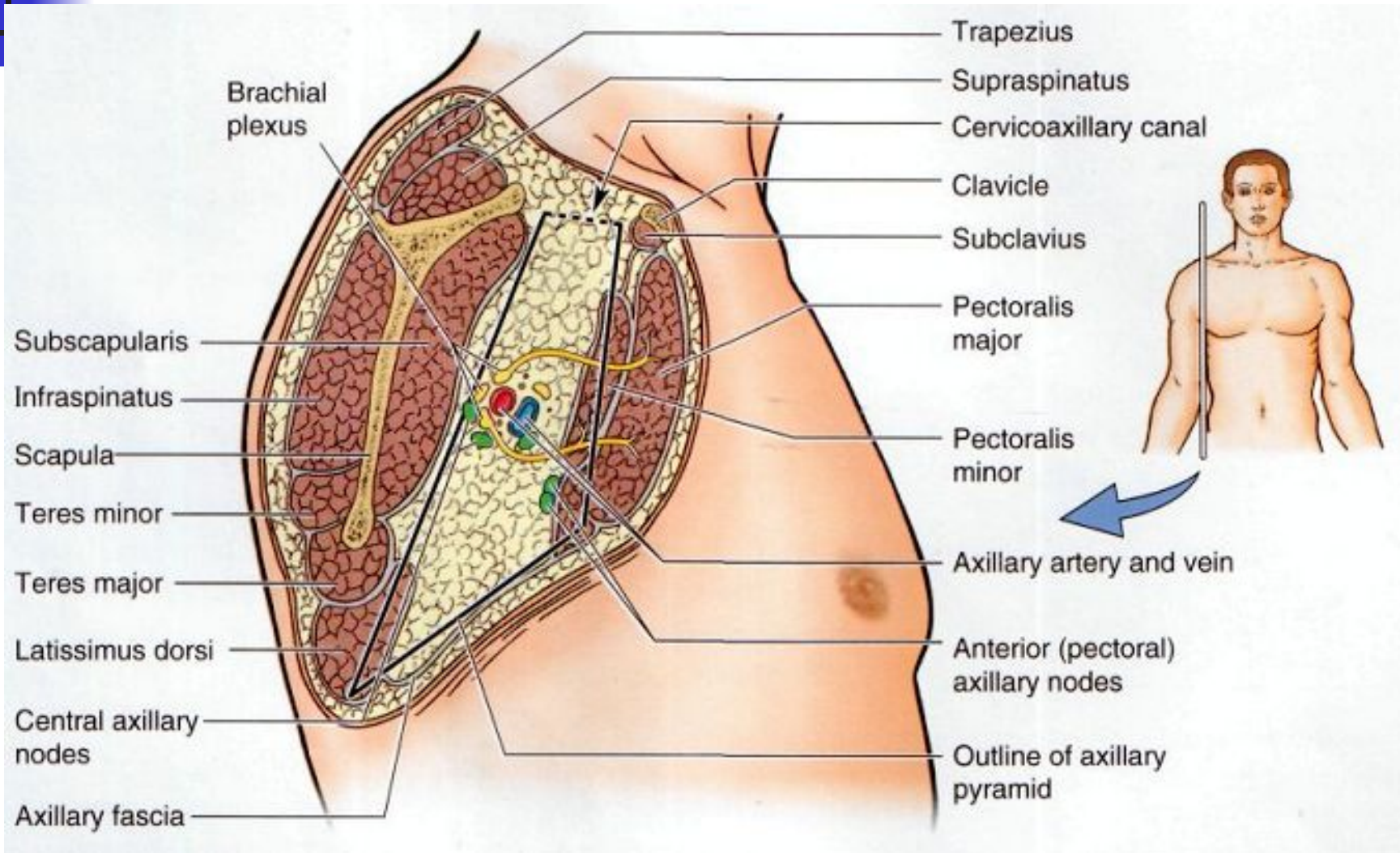


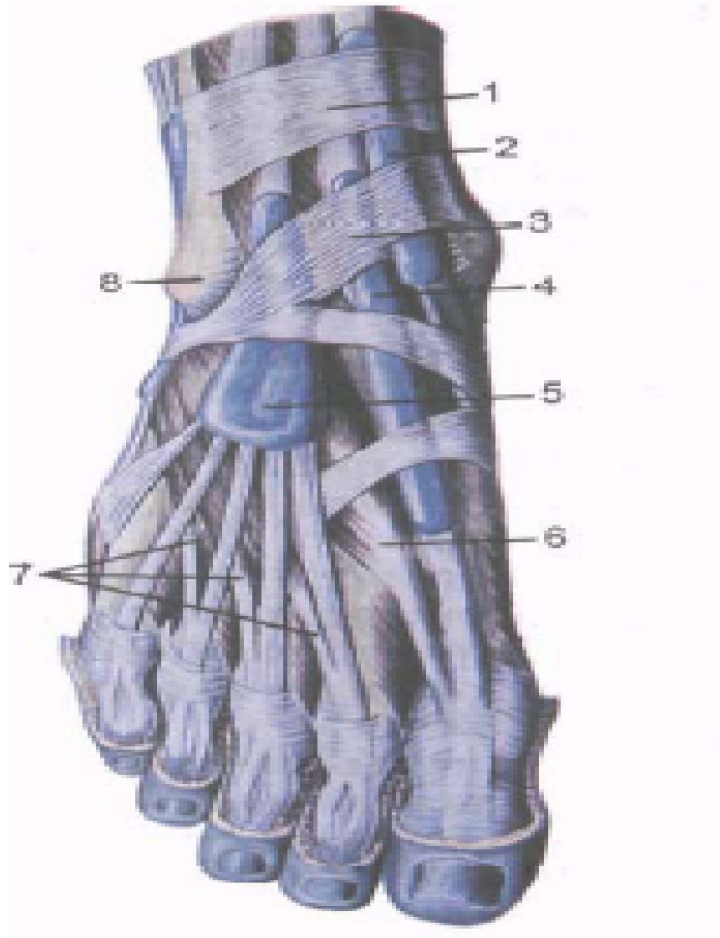
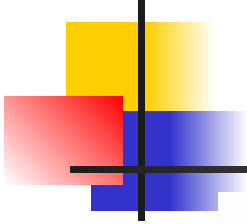
Рис. 4. Тот же больной вид с другой стороны. В дальнейшем конечность ампутирована

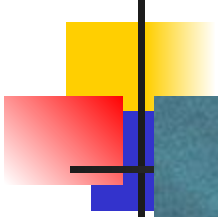


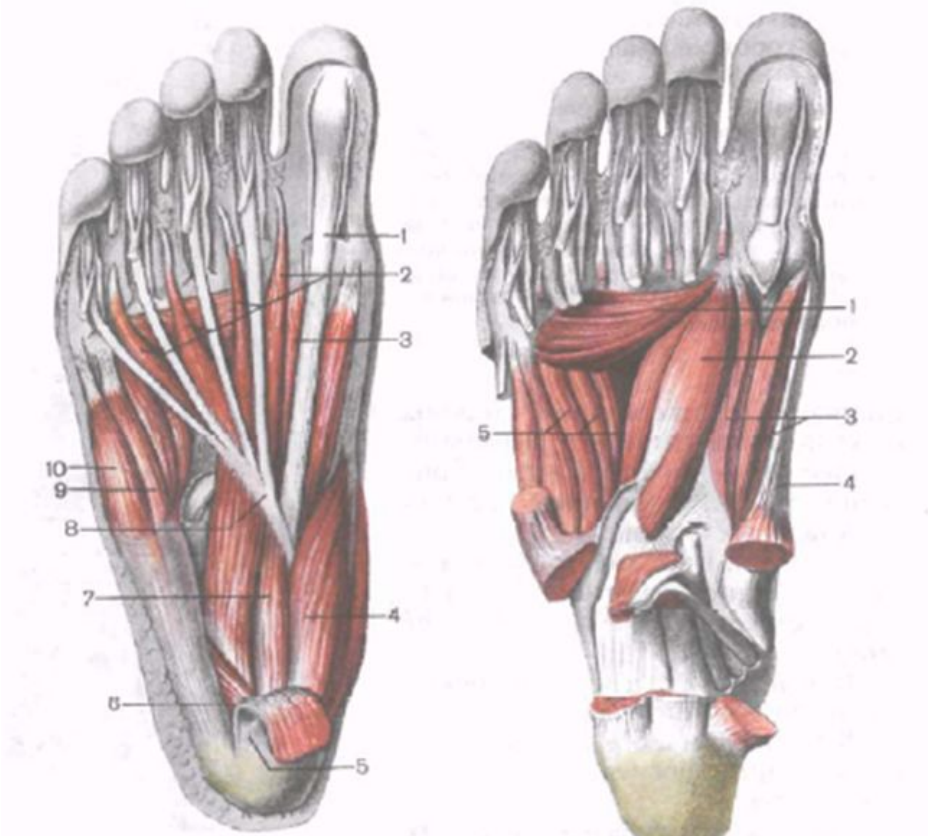
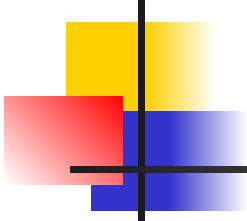


28



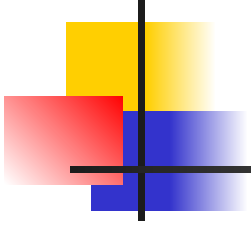
















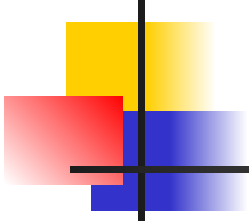




Рис. 1. Анаэробная
неклостридиальная
флегмона левого
бедр
сепсис после введения
"Коаксила" в вены
бедр



Рис. 2. Тот же больной.
Обширная гнойно-
некротическая рана бед
ра после проведенной
хирургической обработ
ки, некротический миозит.

