

Миоэпителиальные клетки в конечном отделе слюнной железы (схема по Г. С. Катинасу):
а - поперечный срез; б - вид с поверхности. 1 - ядра миоэпителиоцитов; 2 - отростки миоэпителиоцитов; 3 - ядра секреторных эпителиоцитов; 4 - базальная мембрана

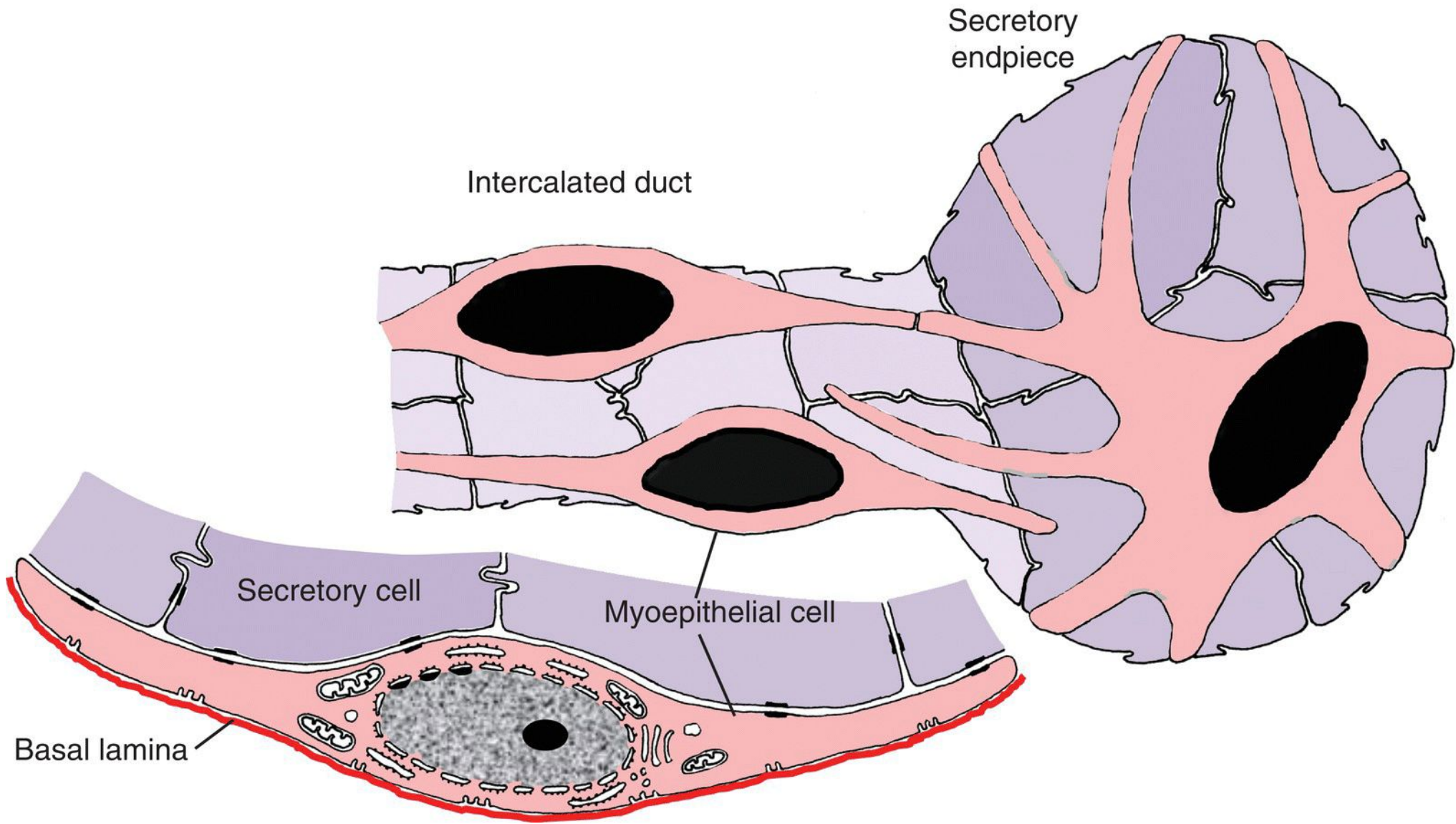
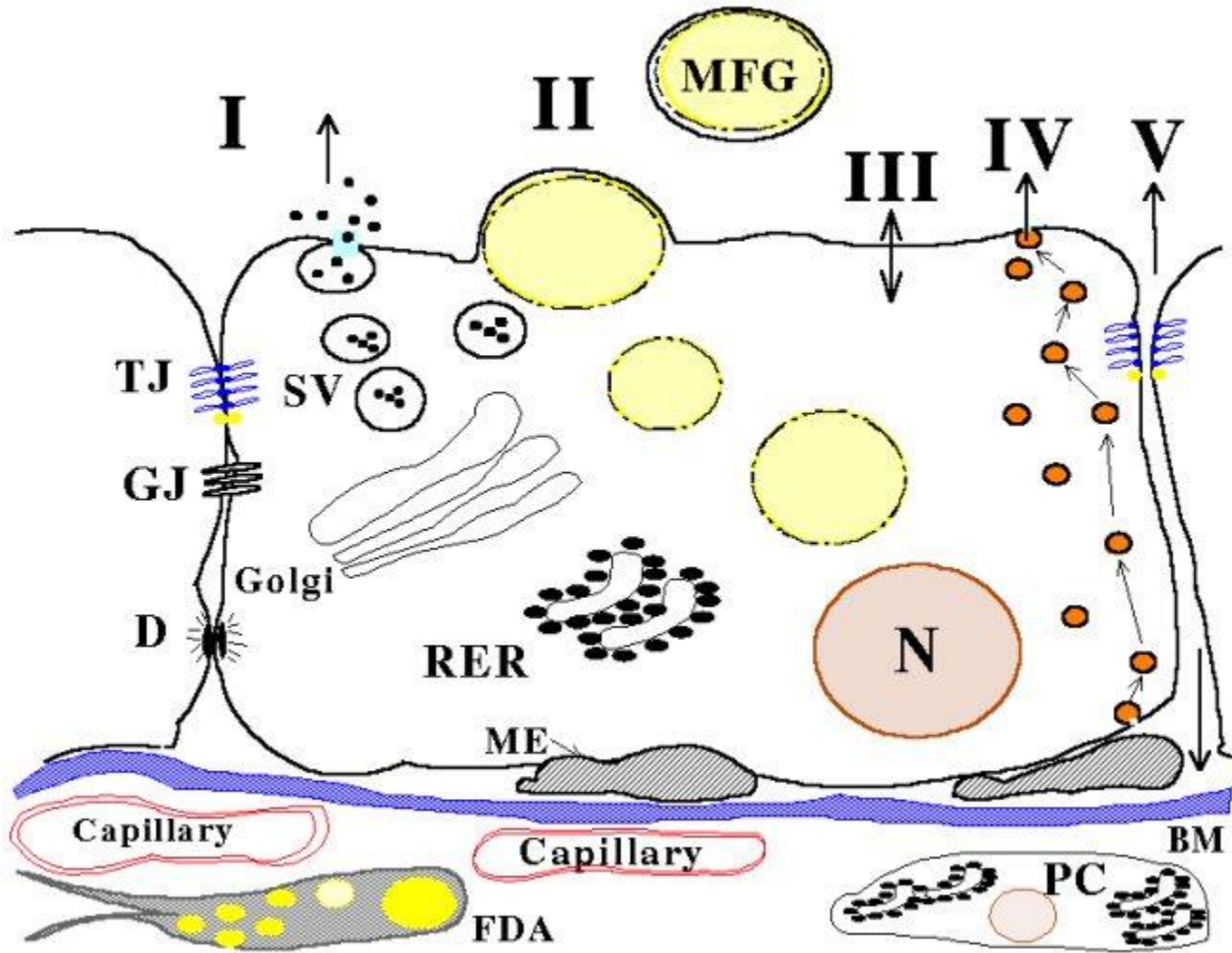
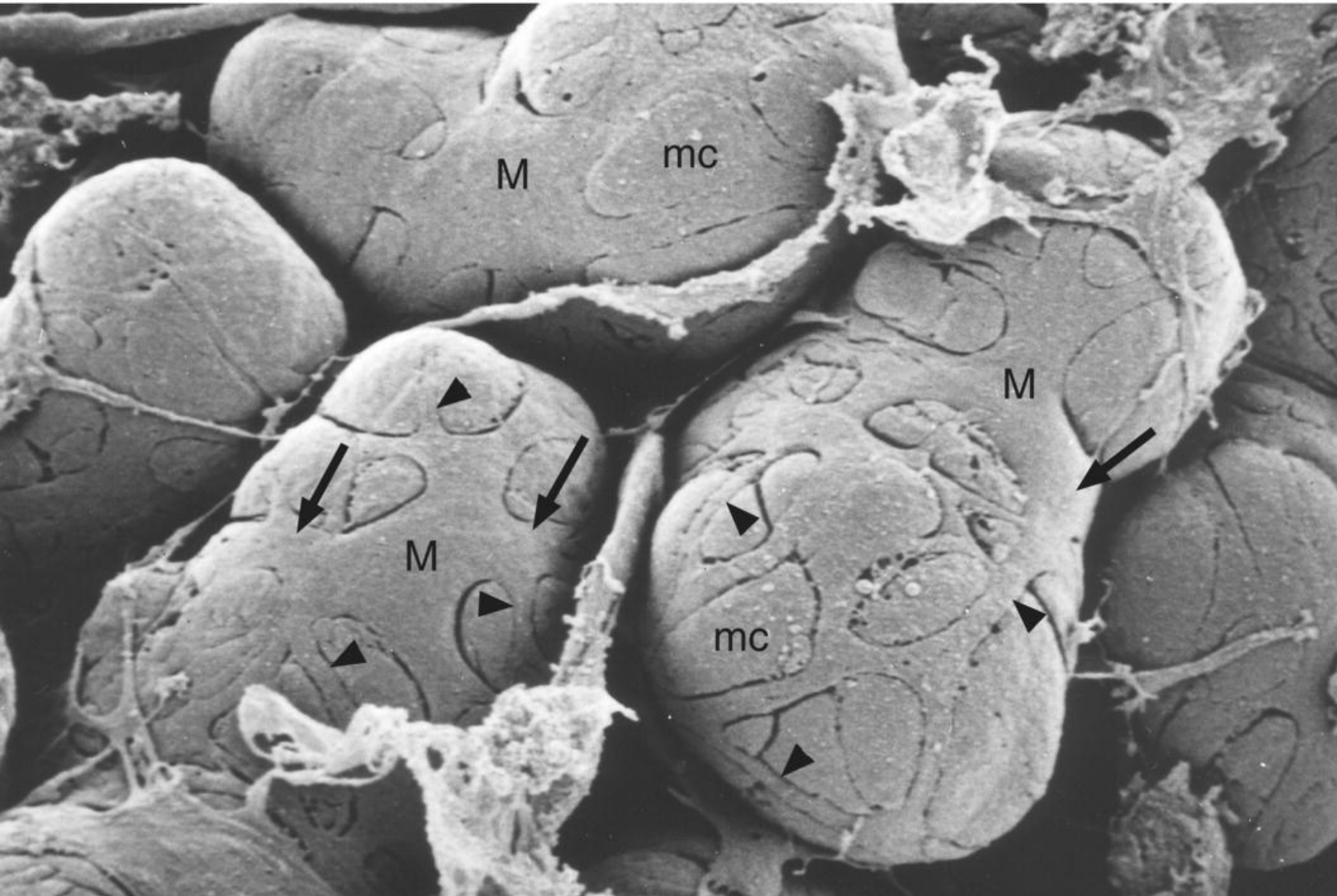


Diagram of myoepithelial cells in section and surface views.



Alveolar Cell from lactating mammary gland.
 N, nucleus; TJ, tight junction; GJ, gap junction;
 D, desmosome; SV, secretory vesicle;
 FDA, fat-depleted adipocyte; PC,
 Plasma Cell; BM, basement membrane;
 ME, cross section through process of myoepithelial cell;
 RER, rough endoplasmic reticulum.
 See text for explanation of secretory pathways I (exocytosis),
 II (lipid), III (apical transport), IV (transcytosis) and
 V (paracellular pathway).



Myoepithelial cells. Scanning electron micrograph showing myoepithelial cells (M) covering the basal surface of mucous endpiece cells (mc) in the rat sublingual gland. Broad processes (arrows) extend from the cell bodies, and give rise to smaller processes (arrowheads).

(From: Nagato, T. et al. (1980) A scanning electron microscope study of myoepithelial cells in exocrine glands. *Cell and Tissue Research*, 209(1), 1–10. Reprinted by permission of Springer Science + Business Media.)