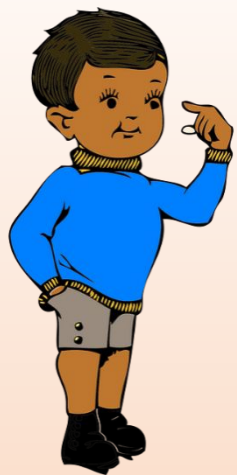


Possessive adjectives and 's

to be and to have review



I



you



he



she



it



you



we



they



I

my

you

your

he

his

she

her

it

its

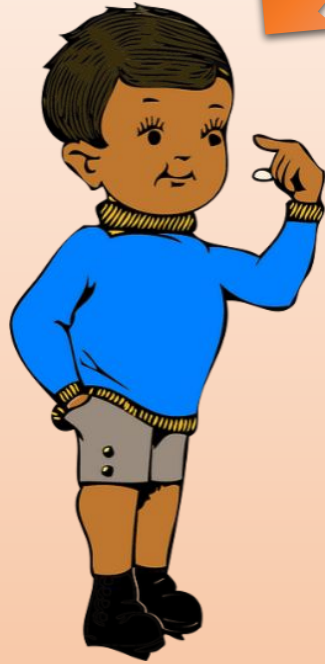
we

our

they

their

Who are you?



I am a boy

I have a car

This is my car



Whose car is this?

What do you have?

I my



Who are you?



You

are

students

You

have

a kite

This is

your

kite



Whose kite is this?

What do you have?

You

your

Who is he?



My name is
Peter



What does he have?

Whose ball is this?

He

is

a boy

He

has

a ball

This is

Peter's

ball

This is

his

ball

He

his



My name is
Mary



What does she have?

She

is

a girl

She

has

a doll

This is

Mary's

doll

This is

her

doll

Whose doll is this?

She

her

What is it?



My name is
Fluffy

Whose tail is this?

What does it have?

It

is

a tiger

It

has

a tail

This is

Fluffy's

tail

This is

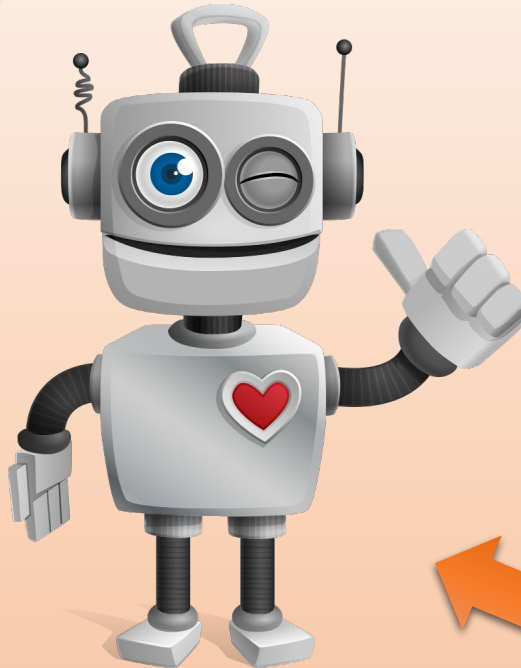
its

tail

It

its

Who are we?



We are children

We have a robot

This is our robot



Whose robot is this?

What do we have?



We our

My name
is Bob

My name is
Kitty



They

are

people

They

have

a plane

This is

Bob and
Kitty's

plane

This is

their

plane

Whose plane is this?

What do they have?

They

their

I

my

you

your

he

his

she

her

it

its

we

our

they

their



I have a plane.

This is your / **my** plane

She has a ball.

This is his / **her** ball

He has a car.

This is **his** / her car

We have a kite.

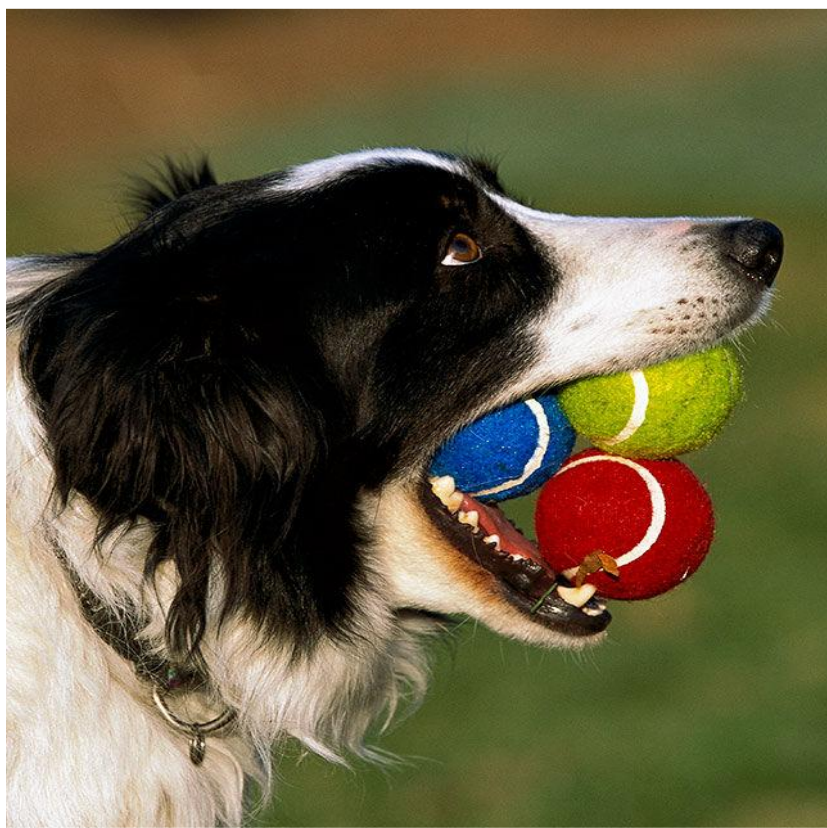
This is **our** / their kite

They have a house.

This is our / **their** house

It has balls.

These are his / **its** balls



Spike



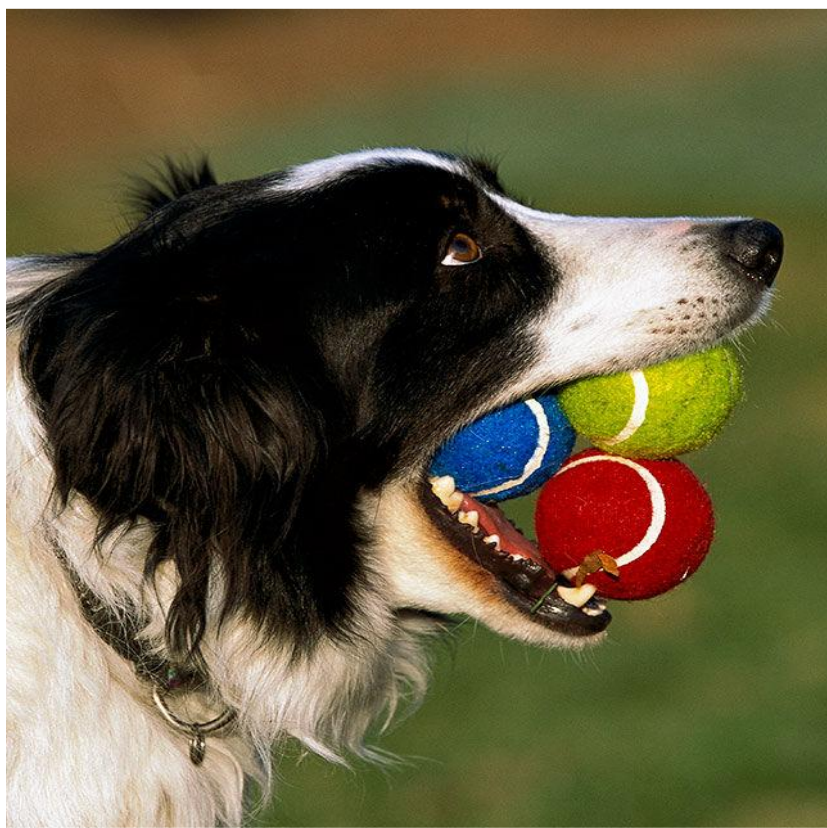
Tom and Andy



The Wangs



Whose ball is it?
It is Spike's ball



Spike



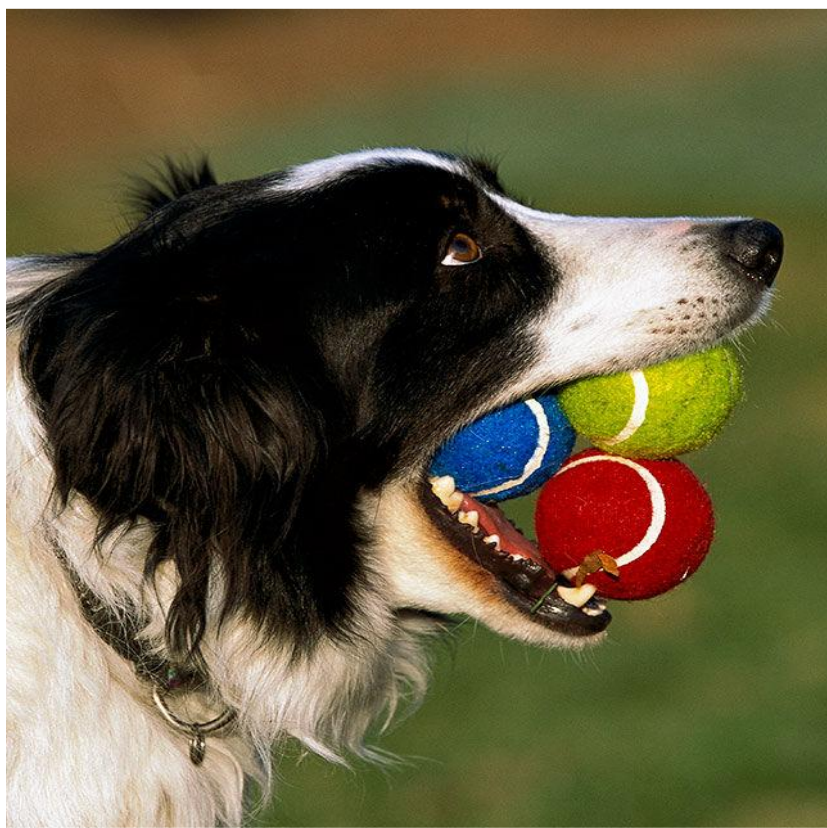
Tom and Andy



Whose kite is it?
It is Tom and
Andy's kite



The Wangs



Spike



Tom and Andy



The Wangs



Whose house is it?
It is the Wang's
house



Jack



Mark



Lisa



**Whose ball is it?
It is Lisa's ball**



Jack



Mark



Lisa



**Whose plane is it?
It is Jack's plane**



Jack



Mark



Lisa



**Whose car is it?
It is Mark's car**