



# Agryz

Completed the presentation Salimgaraeva Islamiya



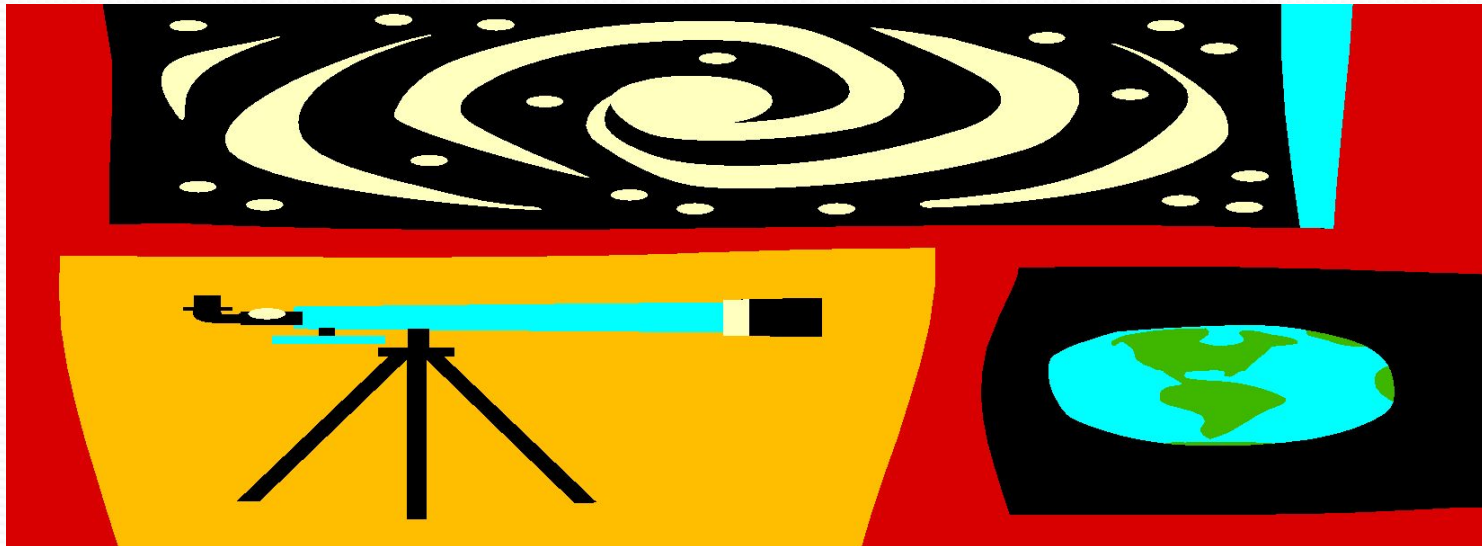
# Content

- Geography
- History
- Economy
- Industry
- Transport



# Geography

- The area is 8.6 km<sup>2</sup>. The city is located in the extreme North-East of Tatarstan, on the border with Udmurtia, at the foot of the Sarapul hill, on the Agryzka river (a small tributary of the IZH river, the Volga basin), 304 km East of Kazan and 36 km South of Izhevsk.



# History

- Known since 1646. At the beginning of the XX century, there was a volost government, a school, and 2 mosques in Agryz. During the Izhevsk-Votkinsk uprising, Agryz was occupied by Izhevsk rebels, and heavy fighting took place in the city and its surroundings until the end of October 1918. Until 1920, it was the center of Agryzsky volost of Sarapulsky uyezd of Vyatka province. Since 1921, the center of the Agryz Canton of TASSR, since 1924, a small town subordinate to the Yelabuga cantonal Executive Committee.



# Economy

- Food, building materials, woodworking industry. Printing house. 4 secondary and children's music schools, vocational schools, ice Palace, swimming pool, stadium, local history Museum, Central district hospital, railway hospital. 2 mosques.



# Industry

- Food industry enterprises (bakeries PO "Khlebopishchekombinat" and LLC "Bulgar-ikmek", butter and dairy plant LLC "Agryzsky MK"), enterprises for the production of construction materials (LLC "Agryzsky plant of building materials"), woodworking (LLC "MTM"), railway workshops.





# Transport

- An important junction of railway lines to Kazan, Yekaterinburg, Izhevsk, Akbash with the same name station and depot. Intercity bus 628 "Agryz — Naberezhnye Chelny" and suburban 303 "Agryz — Izhevsk/UAS" runs.



# Thanks for watching

