

Toothpick Holder 85810224  
ø 50mm x h 55mm 42ml



Поисковой запрос «toothpick holder porcelain»





## Nippon Porcelain Toothpick Holder | ...

DTR Antiques - 800 × 800 - Поиск по картинке

Nippon porcelain toothpick holder with hand-painted ocean scene and three handles

Перейти

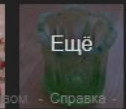
В полном  
размере

Сохранить

Смотреть  
сохраненные

Отправить

### Похожие картинки



Изображения могут быть защищены авторскими правами. - Справка -  
Отправить отзыв



## Nippon Porcelain Toothpick Holder | ...

DTR Antiques - 800 × 800 - Поиск по картинке

Nippon porcelain toothpick holder with hand-painted ocean scene and three handles

Перейти

В полном  
размере

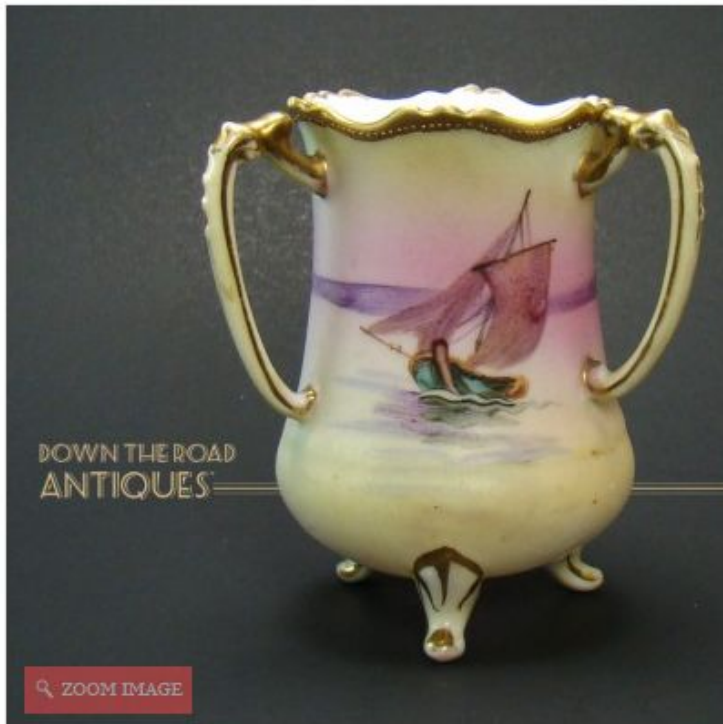
Сохранить

Смотреть  
сохраненные

Отправить

Home » Nippon Porcelain Toothpick Holder - Three Handles, Hand-Painted & Rare

« Return to Previous Page



## Nippon Porcelain Toothpick Holder - Three Handles, Hand-Painted & Rare

**\$225.00**

MAKE AN OFFER

U.S. Shipping: \$12.00

Product ID: 2025

### QUICK OVERVIEW:

This hard-to-find hand-painted Nippon porcelain toothpick holder is in mint condition, depicting a sailing ship in the ocean.

The body is supported by three feet with a gold beaded top, and additional gold tracery along the handles.

Signed: Hand Painted Nippon

ADD TO CART

+ Add to Wishlist + Add to Compare + Email to a Friend

**MONTHLY SALE**



Shop Now

**VIDEOS**



Watch Now







Nippon



## Indiana's Finest Collections

of

- China & Porcelain including R.S. Prussia, Limoges, Royal Bayreuth, Nippon, Dresden Haviland Drop Rose, etc.
- Victorian Era Furniture and Accessories including walnut, oak, cherry and mahogany
- Art pottery including Roseville, Weller, Roakwood, Beellek, etc.

# Danville Antique Mall

Mon.-Sat. 10 to 6, Sun. 12 to 5

132 West Main Street, Danville, Indiana • (317) 745-1774



by Marie Eckess, Ph.d.

Although several theories exist regarding different colors of marks used, identification is difficult at times and exact dating is almost impossible. Records of factories producing **Nippon** were destroyed during World War II, and the Morimura Bros. of New York City, a prime importer of these wares, went out of business in 1941. Thus the mystery of **Nippon** marks remains to be completely solved.

The Japanese were prolific students and copied whatever they admired, as there were no copyright laws at that time. Thus we find **Nippon** porcelain in a wide variety of shapes that resemble R.S. Prussia, Wedgwood, Limoges, Gouda, Belleek, **Royal Bayreuth**, etc. Few artists signed their name to their works of art. Artist-signed pieces of high

melt and sink into the enamel decoration. Discoloration resulted with overfiring and silver often turned black in color.

Several techniques were used in **Nippon** decoration. 1.) *Moriage*: a method of applying clay (slip) in relief. This is done either by hand rolling and shaping the clay and then applying the design; by trailing softened clay onto the object by the use of tubing; or by reducing the clay to a liquified state and painting the design with a brush. 2.) *Sprigging*: the application of small molded relief decoration to the surface of the item as in Wedgwood's Jasper 3.) *Transfer Print*: the transferring of wet tissue paper-thin print to the porcelain surface of an item (used as an inexpensive substitute for handpainted

# SLEEPY HOLLOW



ANTIQUE MALL

## Over 90 Shops

"Come One.

Come All!"



Antique Furniture,  
Glass and Depression  
Glass, Kitchen Gadgets,  
Hummels and Rockwells,  
Dolls, Primitives,  
and many other  
collectables.





~49€

Royal Bayreuth, 1902



~49 €

Royal Bayreuth



~29 €

Royal Bayreuth



~39 €

Royal Bayreuth



~39 €

Royal Bayreuth

Шпалера



~60€

Royal Bayreuth, 1902

# Шпалера



~60€

Royal Bayreuth, 1902



~79€

Royal Bayreuth, 1902





Royal Bayreuth, 1900-e

facebook

Регистрация

Эл. адрес или телефон

Пароль

Вход

Забыли аккаунт?



## Royal Bayreuth Collectors Club

Главная

Информация

Фото

Мероприятия

Публикации

Сообщество

Создать Страницу



👍 Нравится

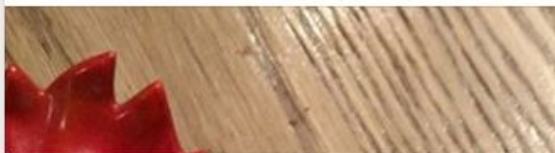
➔ Поделиться

✎ Рекомендовать правки



Отправить сообщение

### Фото



### Организация

Сообщество

Все

👍 Нравится 265 людям

👤 Подписаны 269 человек

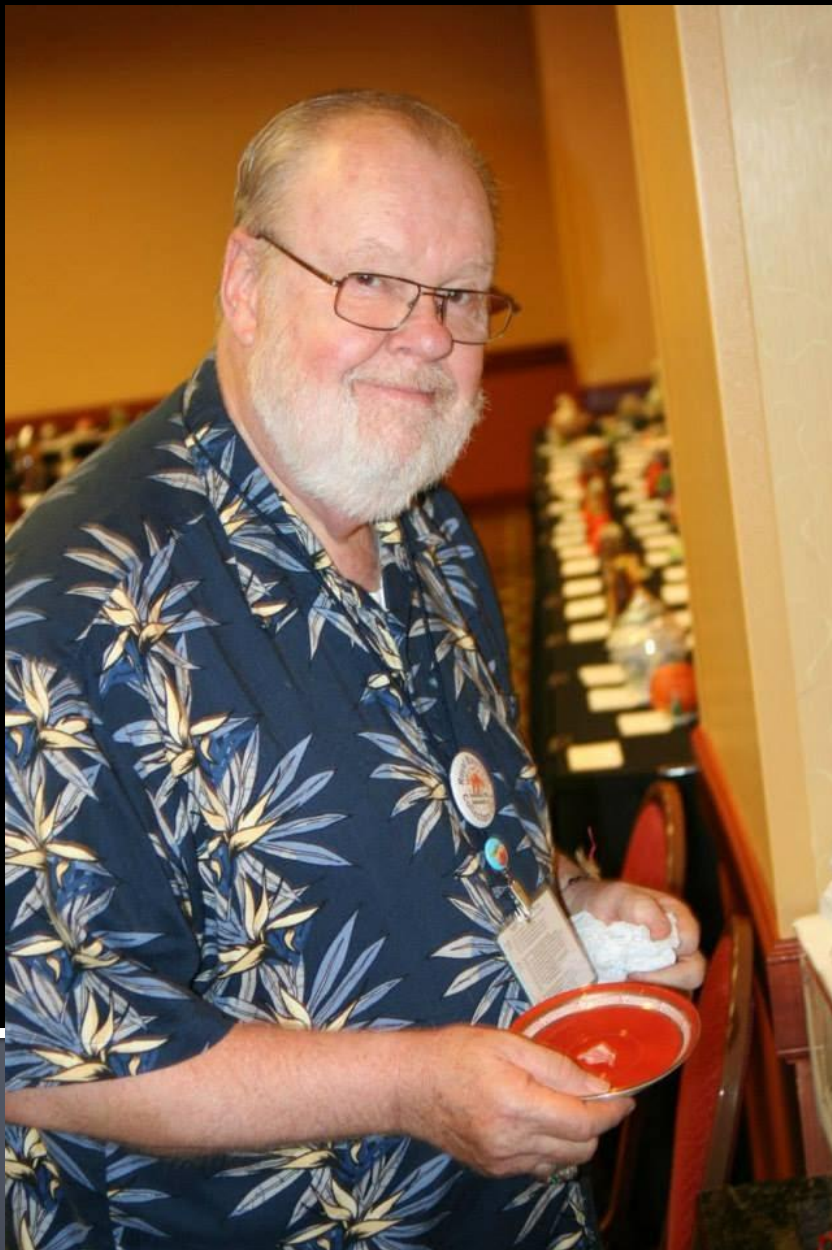
Royal Bayreuth



Royal Bayreuth



Royal Bayreuth



Royal Bayreuth



Royal Bayreuth



Royal Bayreuth



**Royal Bayreuth**



# China Toothpick Holders



A Schiffer Book for Collectors With Price Guide



Fig. 401. Left: Three handles, very detailed thin porcelain. Possibly Prussia related. Unmarked. \$100-125. Right: Three handles, possibly Prussia related. Unmarked. \$125-150.



Fig. 403. Left: Mold 636. Unmarked. \$150-225. Right: White iron mold 634. Unmarked. \$150-200.

Fig. 402. Mold 542, three handles. Exceptional hand painting, artist signed "F. Asselin." Unmarked. \$300-350.



Fig. 404. Left: Mold 584. Marked - see Fig. 444. \$175-225. Right: "Jewel" mold 643. Marked - see Fig. 444. \$200-250.



Fig. 574. Left: Unmarked. \$45-60. Right: Unmarked. \$45-60.

Fig. 575. Left: Marked - Fabers. \$45-60. Right: Unmarked. \$45-60.



Fig. 576. Brimstone, probably English. Left: Unmarked. \$45-55. Right: Unmarked. \$35-45.

Fig. 577. Brimstone, probably English. Left: Unmarked. \$10-40. Center: Unmarked. \$20-30. Right: Unmarked. \$25-35.



# China Toothpick Holders



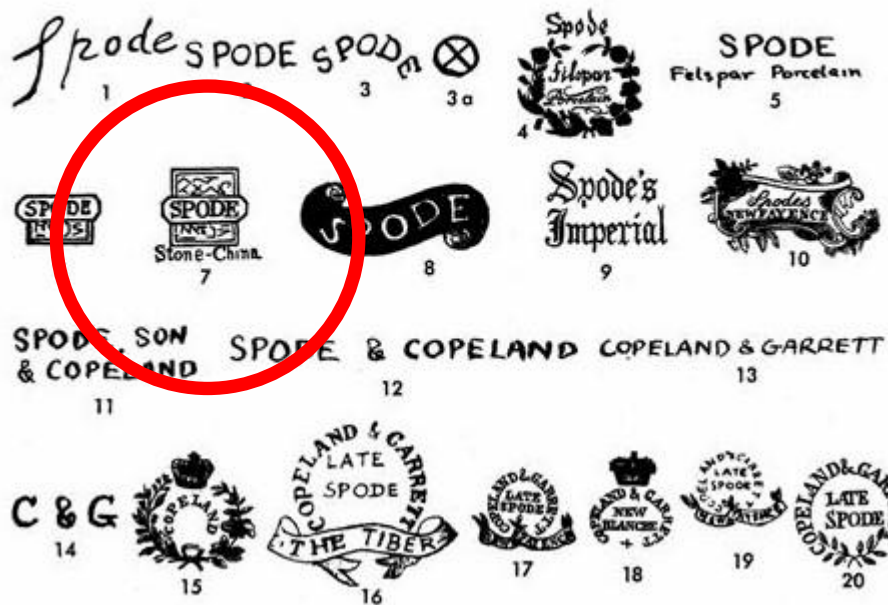
*Judy Keeser  
&  
Sue Ann Raymond*

A Schiffer Book for Collectors With Price Guide

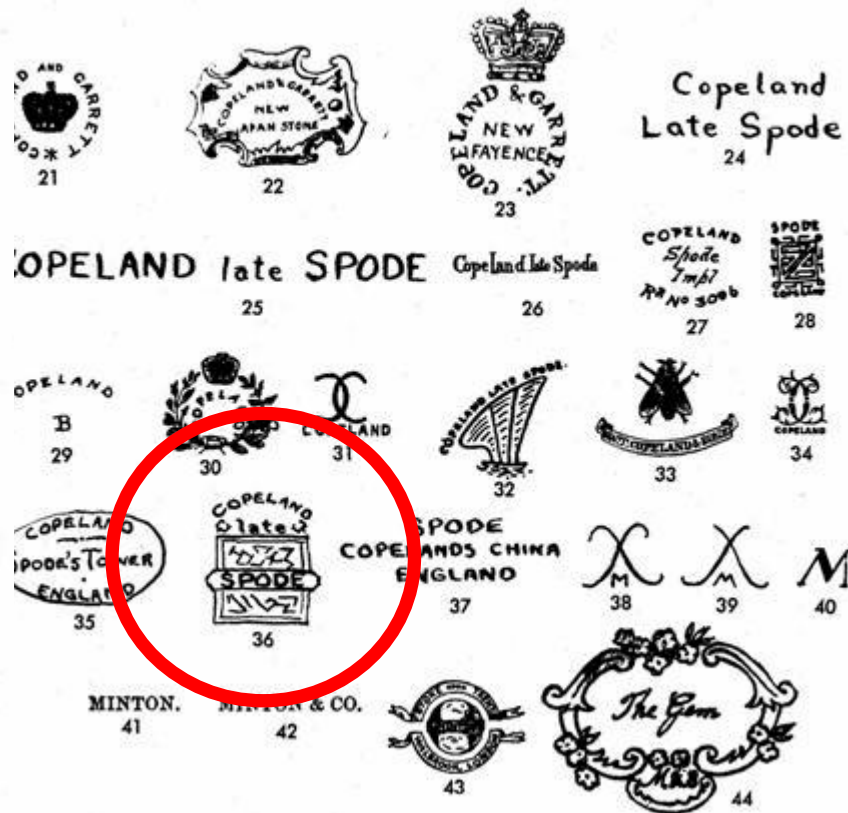
Acknowledgments .....	4
Introduction .....	5
How To Use this Reference .....	7
History of Toothpick Holders .....	8
Manufacturing China Toothpick Holders .....	10
Collecting China Toothpick Holders .....	12
About Prices .....	16
How this Reference is Organized .....	17
Toothpick Holders by Point of Origin .....	18
Austria .....	18
Bavaria .....	19
Royal Bayreuth .....	23
Czechoslovakia .....	49
England .....	51
Royal Doulton .....	59
France .....	63
Germany .....	66
Silesia .....	72
Unmarked .....	75
Carnival Lustre .....	86
Elfinware .....	87
Japan (Nippon) .....	87
Prussia .....	102
United States .....	124
Souvenir Toothpick Holders .....	127
Sanitary Toothpick Holders .....	131
Figural Toothpick Holders .....	137
Pink Pigs .....	144
Miscellaneous Toothpick Holders .....	146
Contemporary Toothpick Holders .....	157
Match Holders .....	159
Appendix .....	162
Glossary .....	171
Bibliography .....	173
Index .....	174

# Marks.

## GREAT BRITAIN



## GREAT BRITAIN



Spode

Marks.



Spode

Marks.



Spode

Marks.



Spode. Buttercup, 1924-1992

# Marks.



Spode. Buttercup, 1924-1992

Punch, 1882.



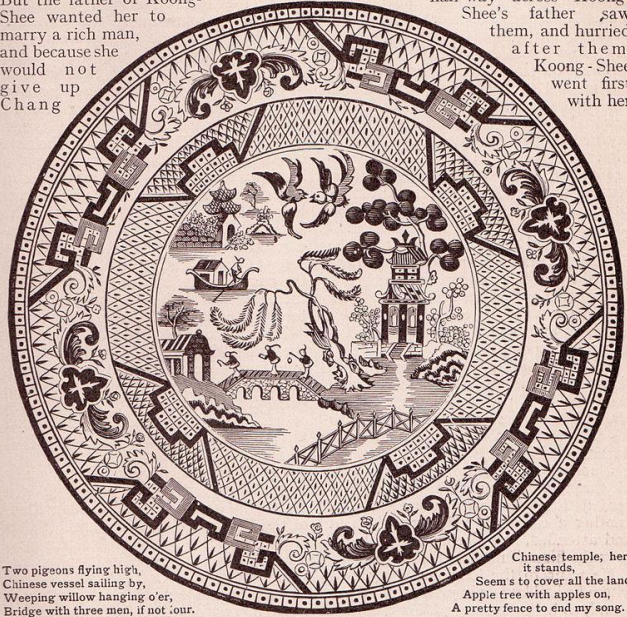
THE SIX-MARK TEA-POT.



Spode. Willow pattern

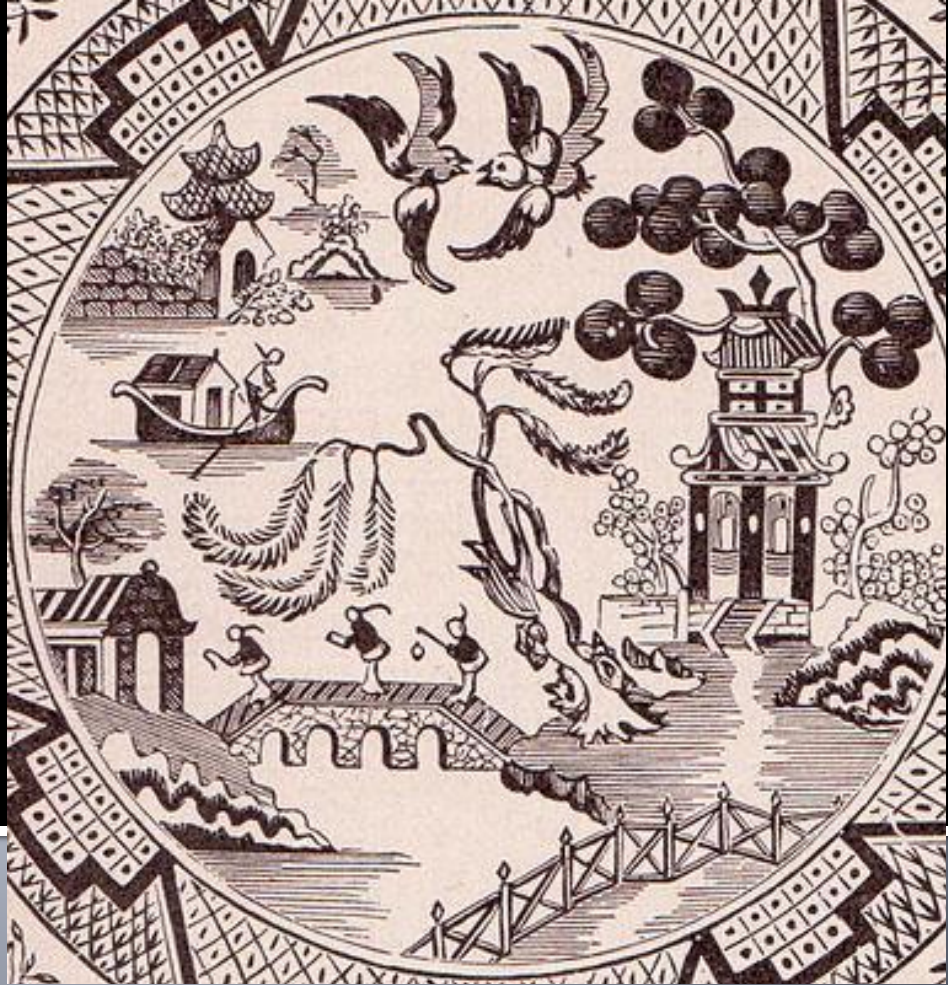


Koong-Shee, fell in love with her father's secretary, Chang, who was a poor man. They had to cross the bridge to get out of the garden, and as they were half-way across Koong-Shee's father saw them, and hurried after them. Koong-Shee went first with her



Two pigeons flying high,  
Chinese vessel sailing by,  
Weeping willow hanging o'er,  
Bridge with three men, if not four.

Chinese temple, here  
it stands,  
Seems to cover all the land,  
Apples on with apples on,  
A pretty fence to end my song.



Spode. Willow pattern

SPODE  
48

SPODE  
E



~~£132

Spode. Willow pattern



Spode. Willow pattern



"Audley" S 2401 Jasmine Body Dinner Ware, Square "Pine" Shape  
Tea, Breakfast and Coffee Ware. "Florence" Shape

Spode

"AUDLEY"

(Period 1805)

Whence came Spode's inspiration for this gay colourful pattern? Probably from the silken gowns of the Eighteenth Century; which, with their flowered Brocade designs, harmonised so well with the furnishings of that period.

SPODE FINE CHINA Tea, Breakfast and Coffee Ware can be purchased to match the Dinner Ware.

Spode. Audley pattern



~~£12

Spode. Audley pattern



~~£38

Spode. Audley pattern



~~£19

Spode. Audley pattern. 1969-1970



Spode. Aesops Fales (1830, 1950)





~~£12

Spode. Aesops Fales (1997)



~~£35

Spode. Aesops Fales (1997)



~~£46

Spode. Aesops Fales (m.XIX)



~~£46

Spode. Aesops Fales (1833-1847)

# Spode

## "PORTLAND VASE"

(Period 1825)

How often in Art has inspiration come from Rome! The Classic and Renaissance Arts of Italy have influenced the World. Here Spode has taken a Mosaic border and the famous "Portland" Vase as his motif for a floral design of unsurpassed beauty and workmanship.



"Portland Vase" 2,6553 Crown Body  
Dinner Ware, Round "Vine" Shape      Tea Ware, "Princess" Shape

Spode. Portland Vase



Spode. Portland Vase. C 1832



Portland Vase. 25 AD



~~£23

Spode. Portland Vase. 1990-e





~~£12

Spode. Portland Vase. 1990-e



~~£150

Spode. 1990-e



~~£150

Spode. 1990-e



~~£150

Spode. Set. 1990-e



~~£150  
Spode. Set. 1990-e













Mason's



Mason's



~~£90

Mason's



Сарабанда



Mason's



Mason's



Mason's





Mason's

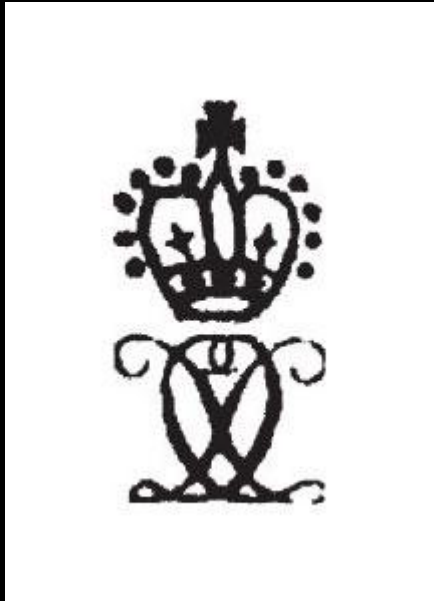


~~£90 .

Mason's. 1870-1895



Mason's. 1870-1895



Royal Derby. 1877-1890-1921

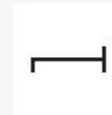
# YEARLY STAMPS 1880 - 1937



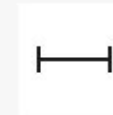
1880



1881



1882



1883



1884



1885



1886



1887



1888



1889



1890



1891



1892



1893



1894



1895



1896



1897



1898



1899

Royal Derby. 1877-1890-1921-1967



1900



1900



1901



1902



1903



1904



1905



1906



1907



1908



1909



1910



1911



1912



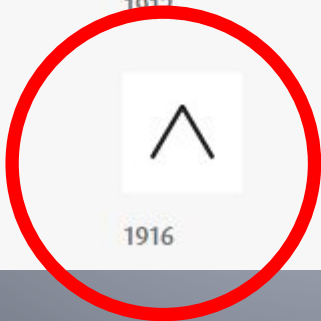
1913



1914



1915



1916



1917



1918

Royal Derby. 1877-1890-1921-1967

<i>I.</i>	<i>1938</i>	<i>XXI.</i>	<i>1958</i>	<i>XLI.</i>	<i>1978</i>	<i>LXI.</i>	<i>1998</i>
<i>II.</i>	<i>1939</i>	<i>XXII.</i>	<i>1959</i>	<i>XLII.</i>	<i>1979</i>	<i>LXII.</i>	<i>1999</i>
<i>III.</i>	<i>1940</i>	<i>XXIII.</i>	<i>1960</i>	<i>XLIII.</i>	<i>1980</i>	<i>MM.</i>	<i>2000</i>
<i>IV.</i>	<i>1941</i>	<i>XXIV.</i>	<i>1961</i>	<i>XLIV.</i>	<i>1981</i>	<i>MMI.</i>	<i>2001</i>
<i>V.</i>	<i>1942</i>	<i>XXV.</i>	<i>1962</i>	<i>XLV.</i>	<i>1982</i>	<i>MMII.</i>	<i>2002</i>
<i>VI.</i>	<i>1943</i>	<i>XXVI.</i>	<i>1963</i>	<i>XLVI.</i>	<i>1983</i>	<i>MMIII.</i>	<i>2003</i>
<i>VII.</i>	<i>1944</i>	<i>XXVII.</i>	<i>1964</i>	<i>XLVII.</i>	<i>1984</i>	<i>MMIV.</i>	<i>2004</i>
<i>VIII.</i>	<i>1945</i>	<i>XXVIII.</i>	<i>1965</i>	<i>XLVIII.</i>	<i>1985</i>	<i>MMV.</i>	<i>2005</i>
<i>IX.</i>	<i>1946</i>	<i>XXIX.</i>	<i>1966</i>	<i>XLIX.</i>	<i>1986</i>	<i>MMVI.</i>	<i>2006</i>
<i>X.</i>	<i>1947</i>	<i>XXX.</i>	<i>1967</i>	<i>L.</i>	<i>1987</i>	<i>MMVII.</i>	<i>2007</i>
<i>XI.</i>	<i>1948</i>	<i>XXXI.</i>	<i>1968</i>	<i>LI.</i>	<i>1988</i>	<i>MMVIII.</i>	<i>2008</i>
<i>XII.</i>	<i>1949</i>	<i>XXXII.</i>	<i>1969</i>	<i>LII.</i>	<i>1989</i>	<i>MMIX.</i>	<i>2009</i>
<i>XIII.</i>	<i>1950</i>	<i>XXXIII.</i>	<i>1970</i>	<i>LIII.</i>	<i>1990</i>	<i>MMX.</i>	<i>2010</i>
<i>XIV.</i>	<i>1951</i>	<i>XXXIV.</i>	<i>1971</i>	<i>LIV.</i>	<i>1991</i>	<i>MMXI.</i>	<i>2011</i>
<i>XV.</i>	<i>1952</i>	<i>XXXV.</i>	<i>1972</i>	<i>LV.</i>	<i>1992</i>	<i>MMXII.</i>	<i>2012</i>
<i>XVI.</i>	<i>1953</i>	<i>XXXVI.</i>	<i>1973</i>	<i>LVI.</i>	<i>1993</i>	<i>MMXIII.</i>	<i>2013</i>
<i>XVII.</i>	<i>1954</i>	<i>XXXVII.</i>	<i>1974</i>	<i>LVII.</i>	<i>1994</i>		
<i>XVIII.</i>	<i>1955</i>	<i>XXXVIII.</i>	<i>1975</i>	<i>LVIII.</i>	<i>1995</i>		
<i>XIX.</i>	<i>1956</i>	<i>XXXIX.</i>	<i>1976</i>	<i>LIX.</i>	<i>1996</i>		
<i>XX.</i>	<i>1957</i>	<i>XL.</i>	<i>1977</i>	<i>LX.</i>	<i>1997</i>		

**Royal Derby. 1877-1890-1921-1967**



Royal Derby. 1884





~~£80

Royal Derby. 1902

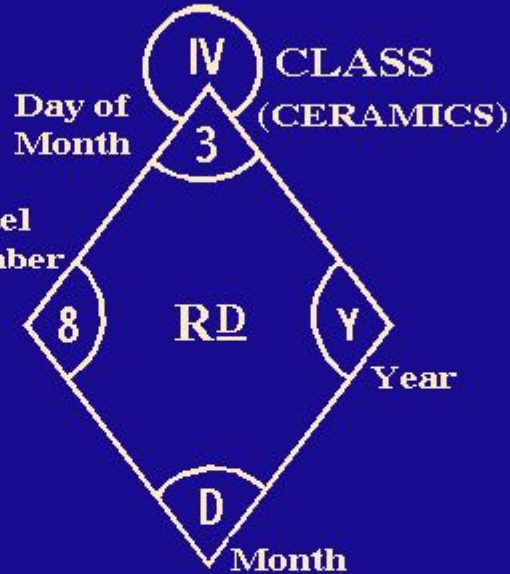
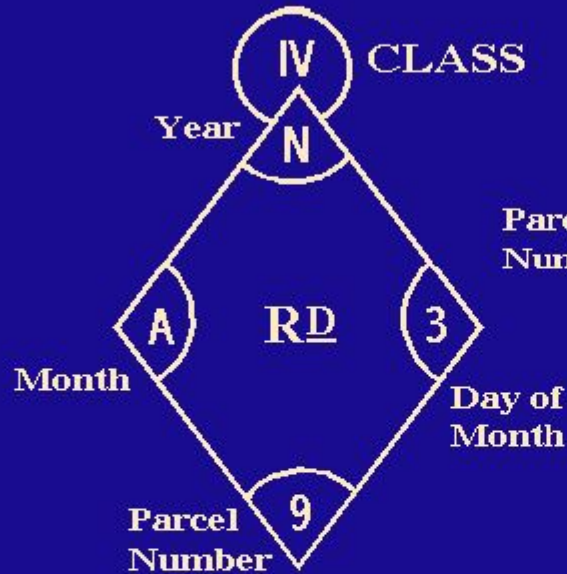


~~£50

Royal Derby. 1883

1842-67

1868-83



Royal Derby. 1883

## 1842-67

## Year Letter at Top

A	1845	N	1864
B	1858	O	1862
C	1844	P	1851
D	1852	Q	1866
E	1855	R	1861
F	1847	S	1849
G	1863	T	1867
H	1843	U	1848
I	1846	V	1850
J	1854	W	1865
K	1857	X	1842
L	1856	Y	1853
M	1859	Z	1860

## 1868-83

## Year Letter at Right

A	1871	L	1882
C	1870	P	1887
D	1878	S	1875
E	1881	U	1874
F	1873	V	1876
H	1869	W	1878
I	1872	X	1868
J	1880	Y	1879
K	1883		

A	December
B	October
C or O	January
D	September
E	May
G	February
H	April
I	July

K	November & December 1860
M	June
R	August (and Sept 1-9 1857)
W	March



Royal Derby. 1984



Royal Derby. 1996



Royal Derby. 1902