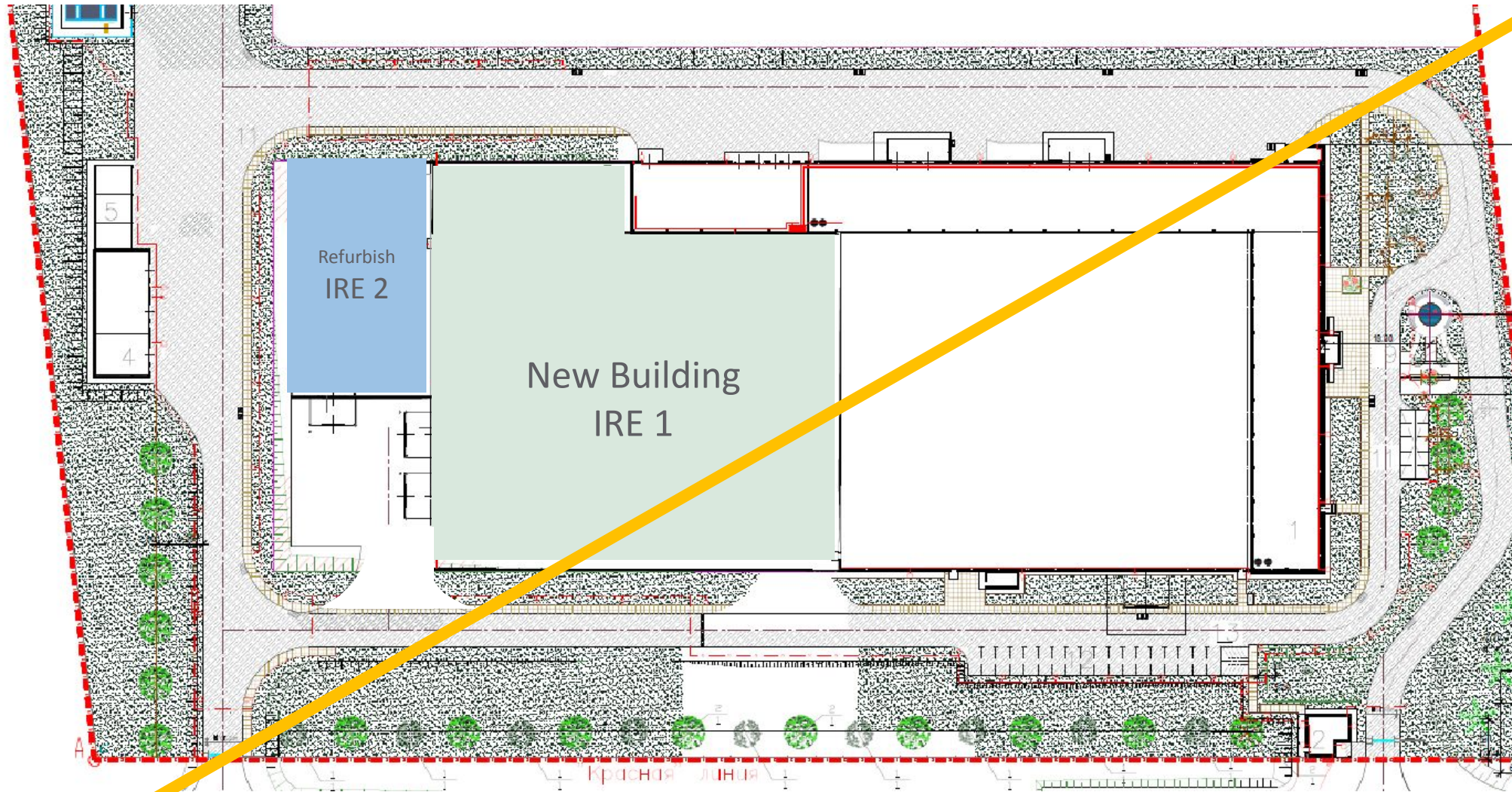


General Layout – Option 1. IRE 2

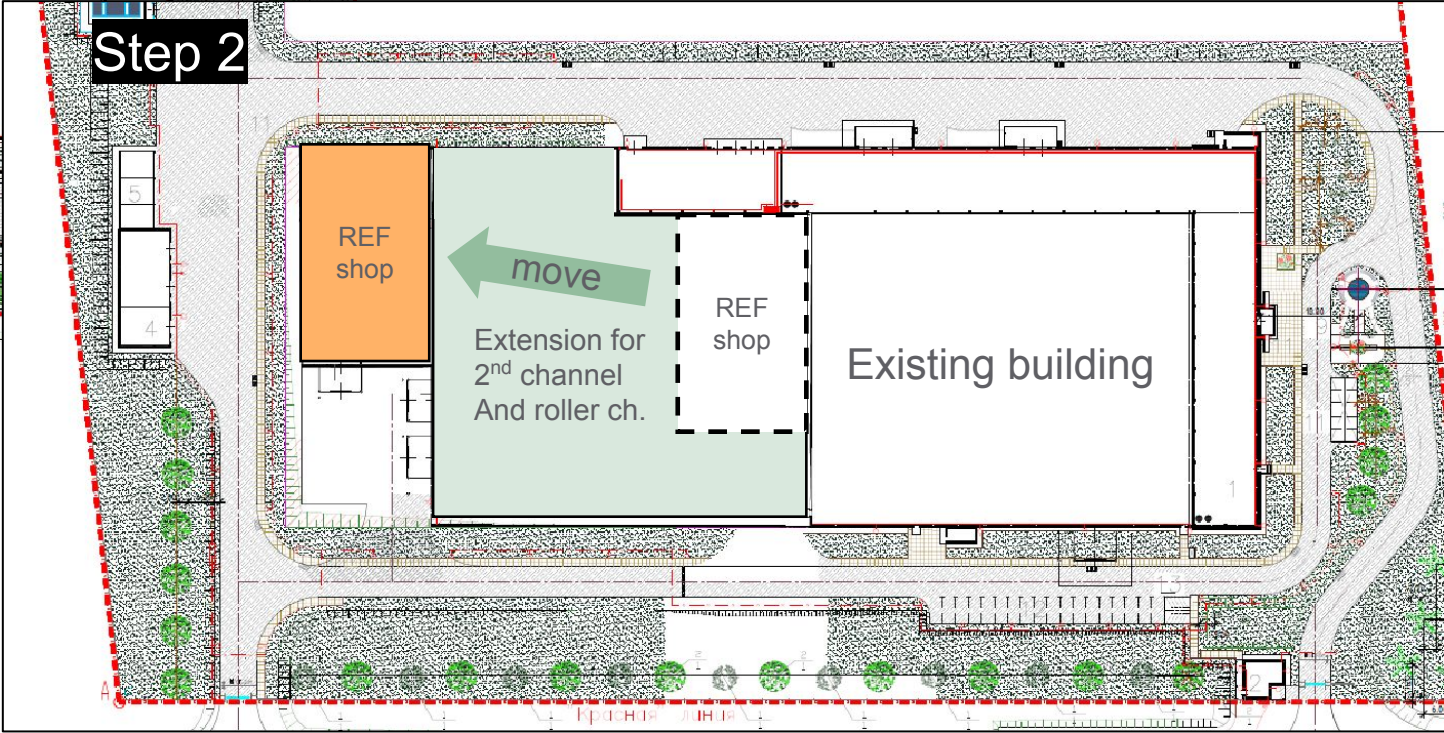
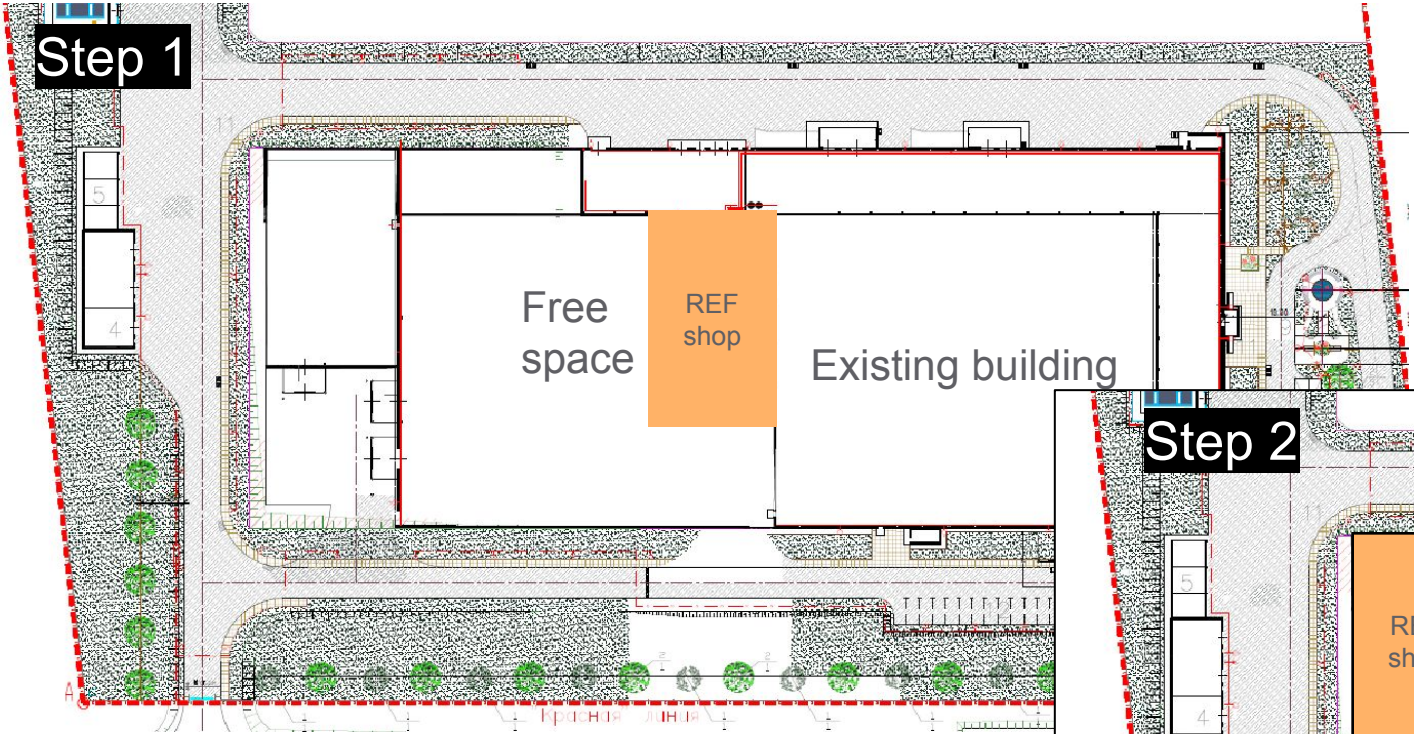


- IRE 1 – Locomotive Project: Installation of 2-nd Grinding channel, creating space for Rollers production, new warehouse.
- IRE 2 – Refurbish Tver project

Factory Layout – IRE 1 + IRE 2

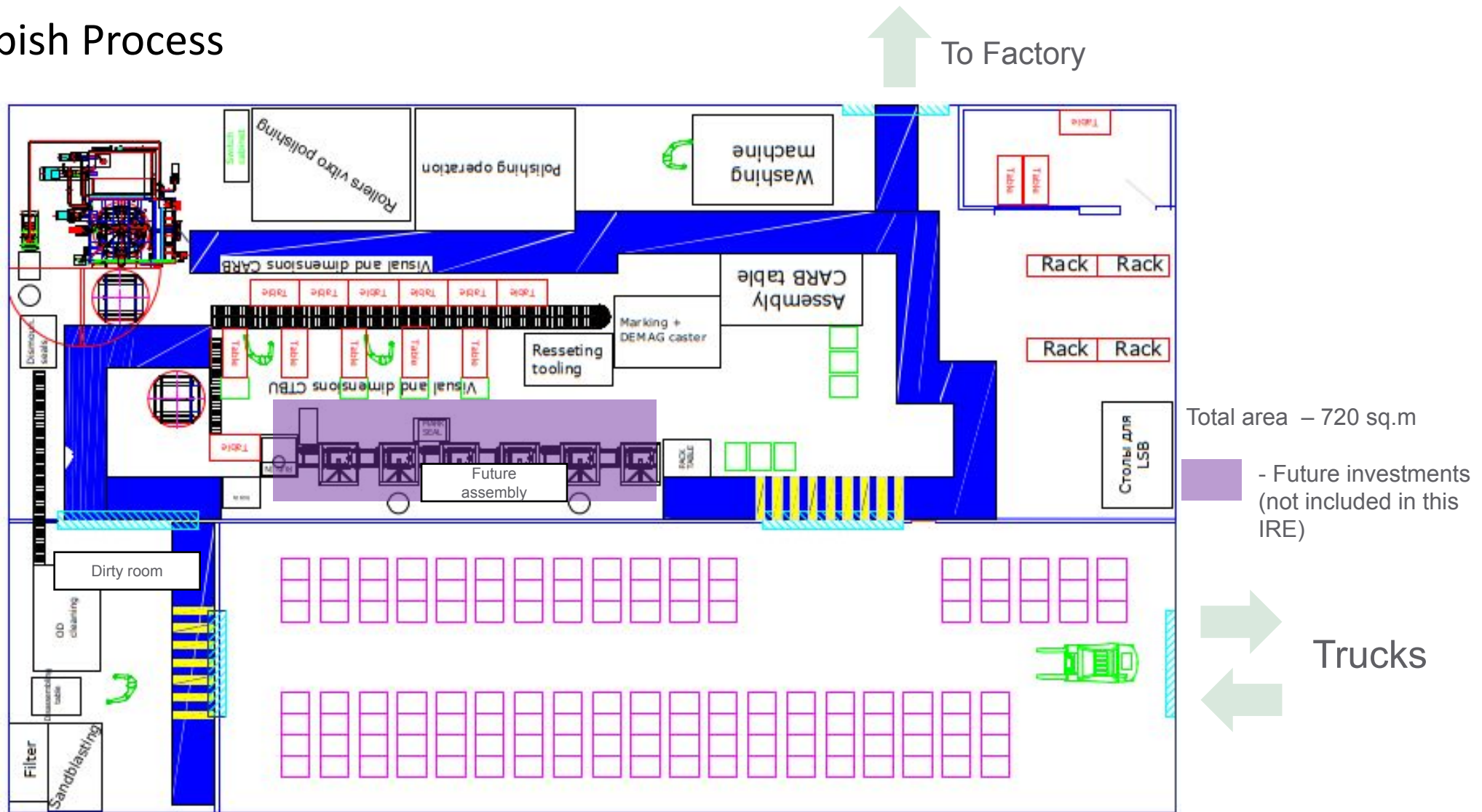


No conflict with future plans



All valuable elements of Step1 (foundation, walls etc) will give value during Step 2, only minor waste.

Tver New Refurbish Process



Factory Layout - Step 1

