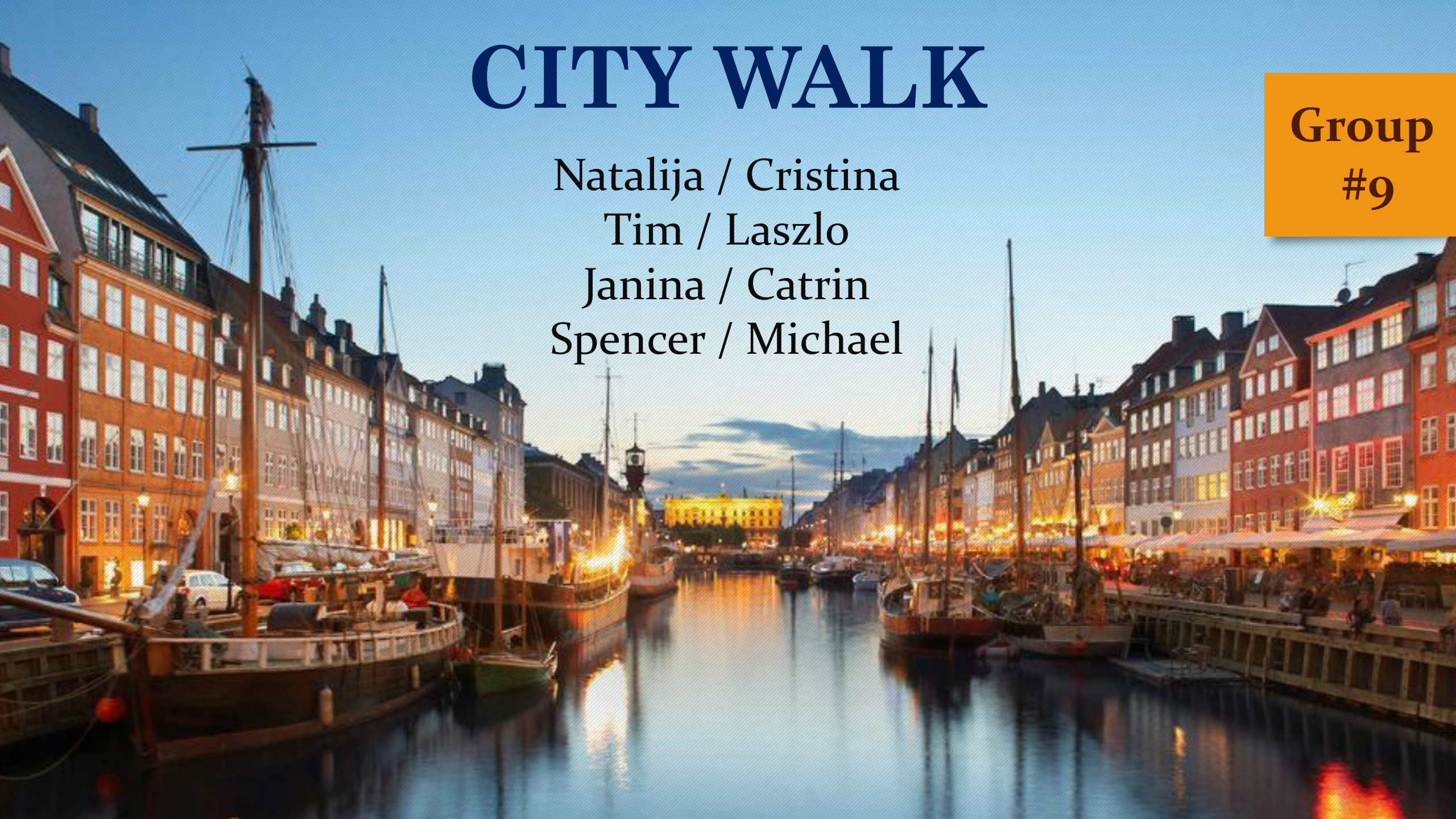


# CITY WALK

Natalija / Cristina  
Tim / Laszlo  
Janina / Catrin  
Spencer / Michael

Group  
#9



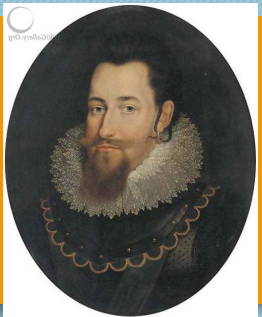








# KING CHRISTIAN'S 4th BREWHOUSE





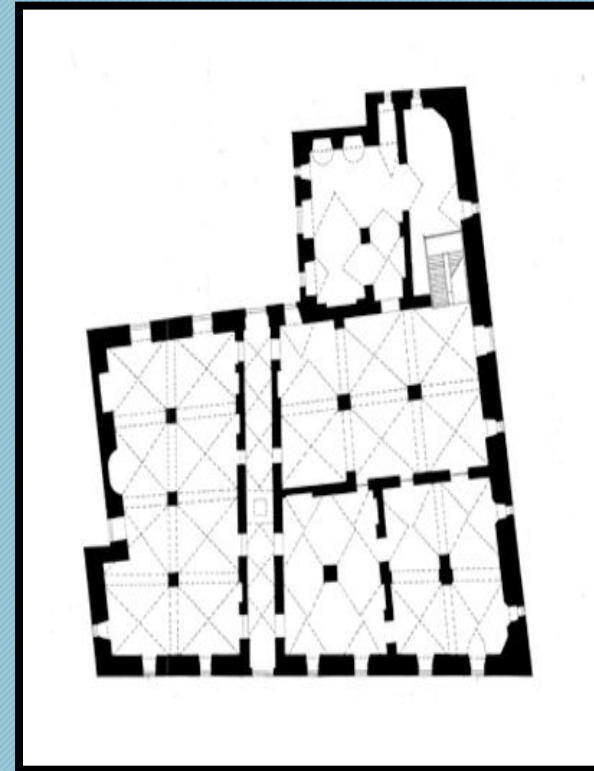
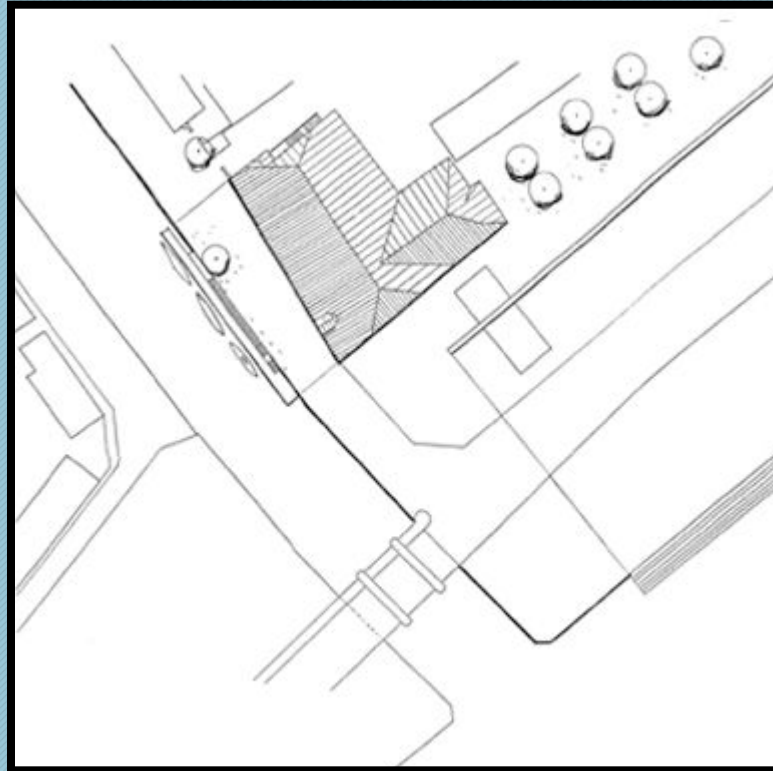
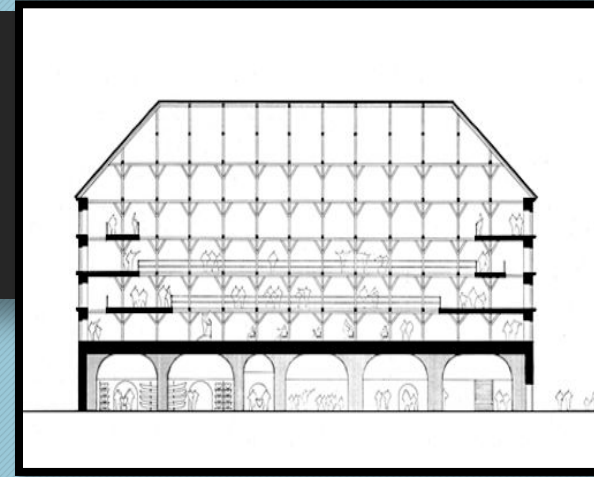
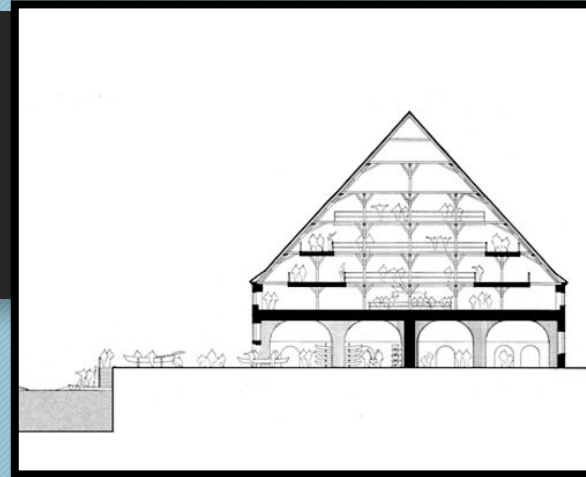
# CASTLE AND BREWERY UNDER ONE ROOF

*The Royal Brewery, with its enormous tiled roof, is one of the most distinctive and old buildings in Copenhagen. The coastline at Slotsholmen was a weak point in Copenhagen's defences. So King Christian IV built a good strong one-storey corner bastion on the spot. The huge walls, open platform at the top, parapet and gun slits were to keep the enemy at bay.*



*One of the Swedes' attacks was mounted exactly where the brewery stood. It was the hub of the defence of the capital city thanks to its huge walls and strategic position close to Christian IV's naval port. After the wars, the royal court and navy continued to get its beer from this castle-cum-brewery.*

*Nowadays this building is used to store, maintain and exhibit antique, nation's royal sculptures.*





# Interesting facts about the Christian's 4th Brewhouse

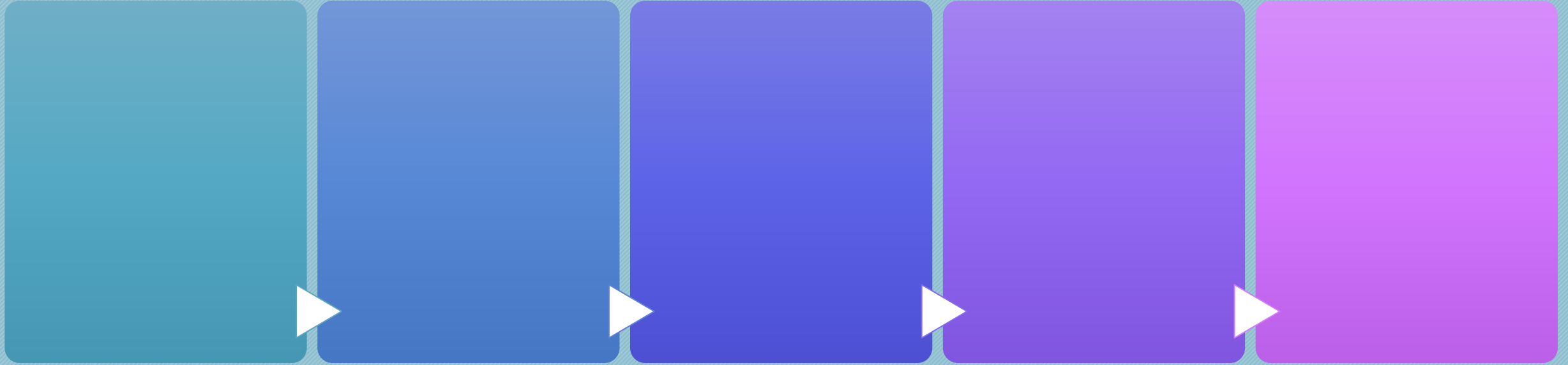
- Northwest flanks as well as the facades throughout the farm were uncovered in one Depth of 1.2-1.4 meters below the existing surface, a total of 75 meters remained exposed.
- Along the western face, large parts of the foundation were covered by a thick one Layers of soil and roots from the town hall wine growing up the brewery.
- Archaeological source material is from before 1632 is available to a very limited extent today.
- Fundament rests at the bottom of at least one team of unprocessed Natural stone / rockstone in varying sizes. Some places could It is observed that particularly large stones were used at the corners of the building.
- Over the foundations are seen up to four shifts of red bricks. The bricks were in so-called Renaissance format.







# SUMMARY:



THANKS FOR YOUR ATTENTION =)

