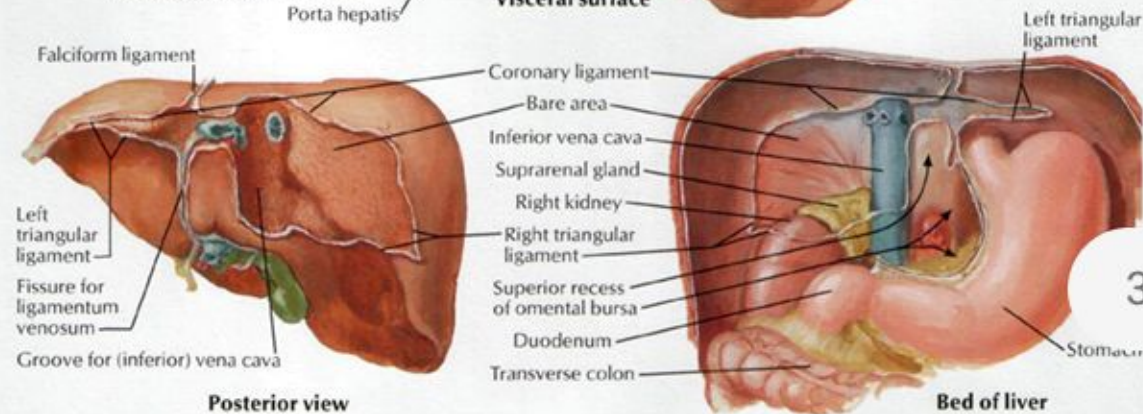
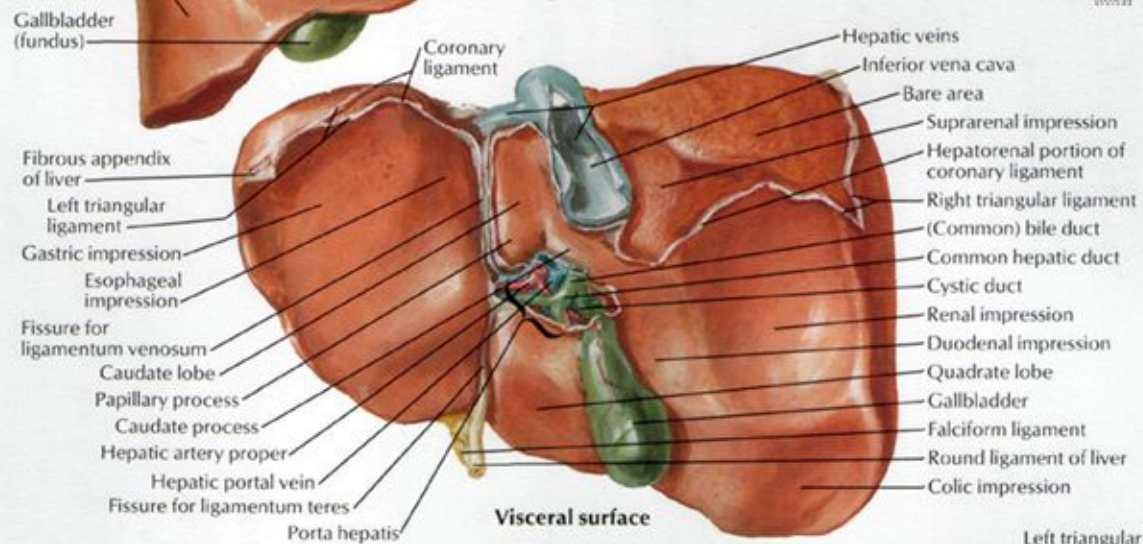
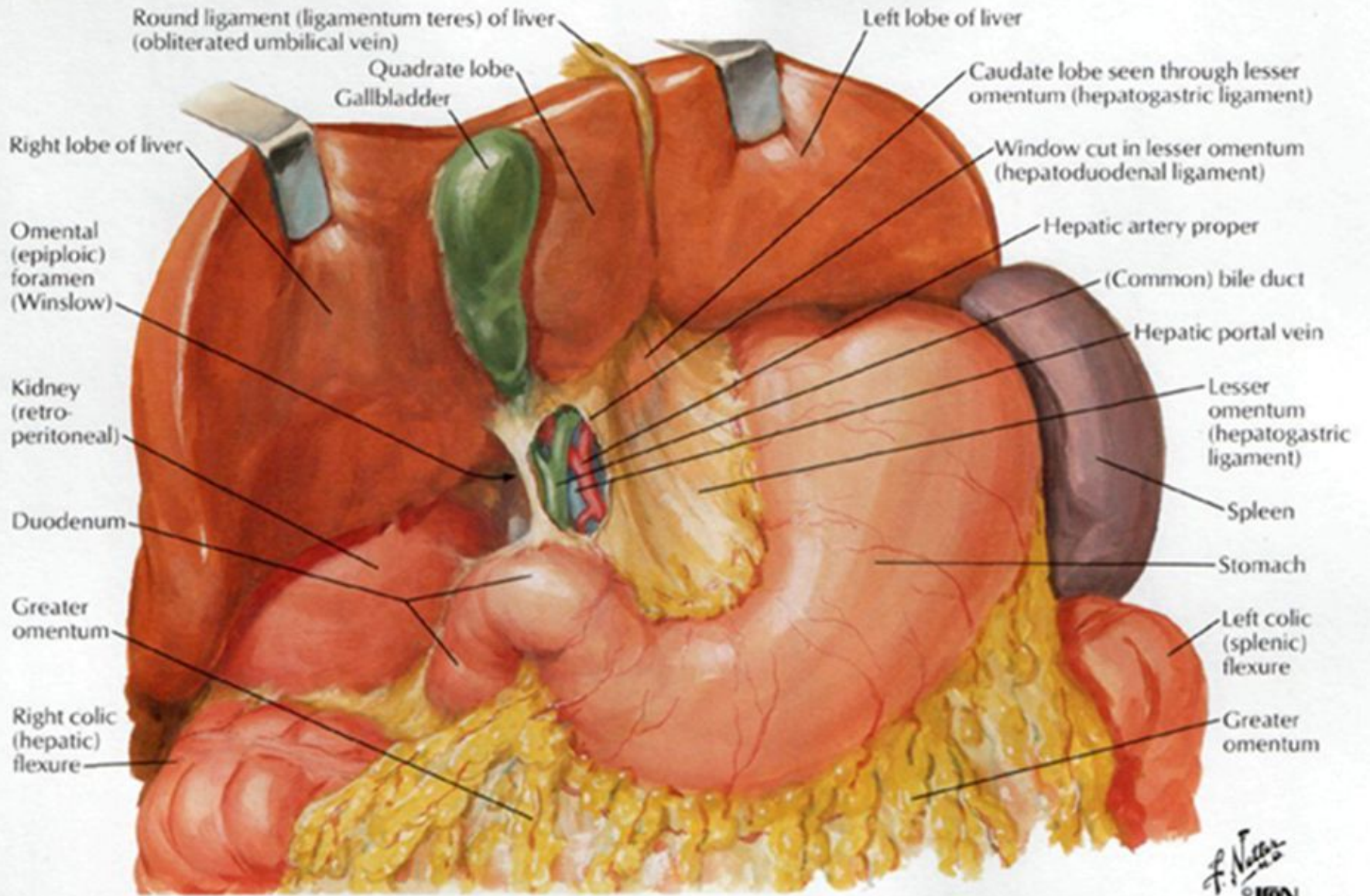
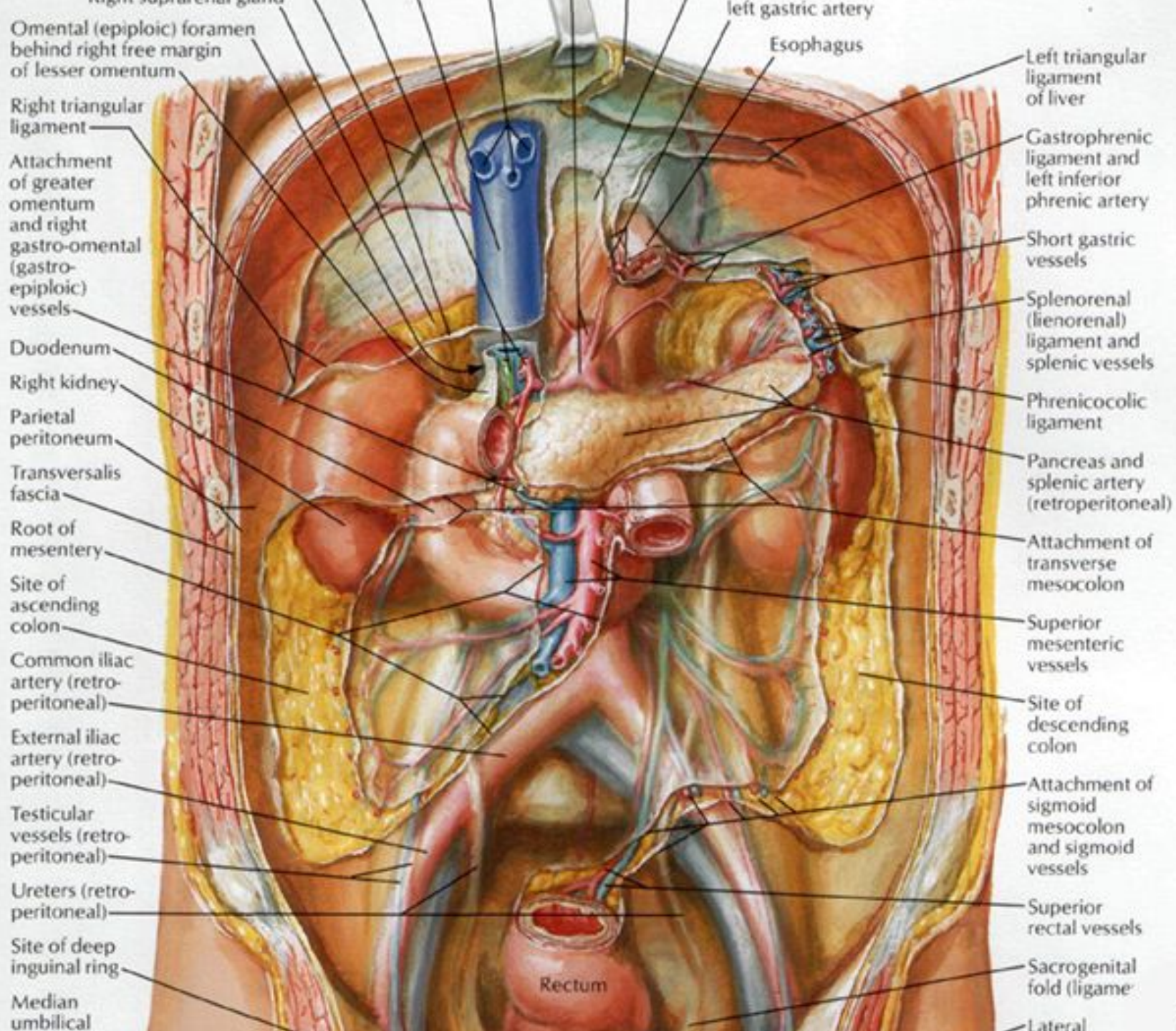
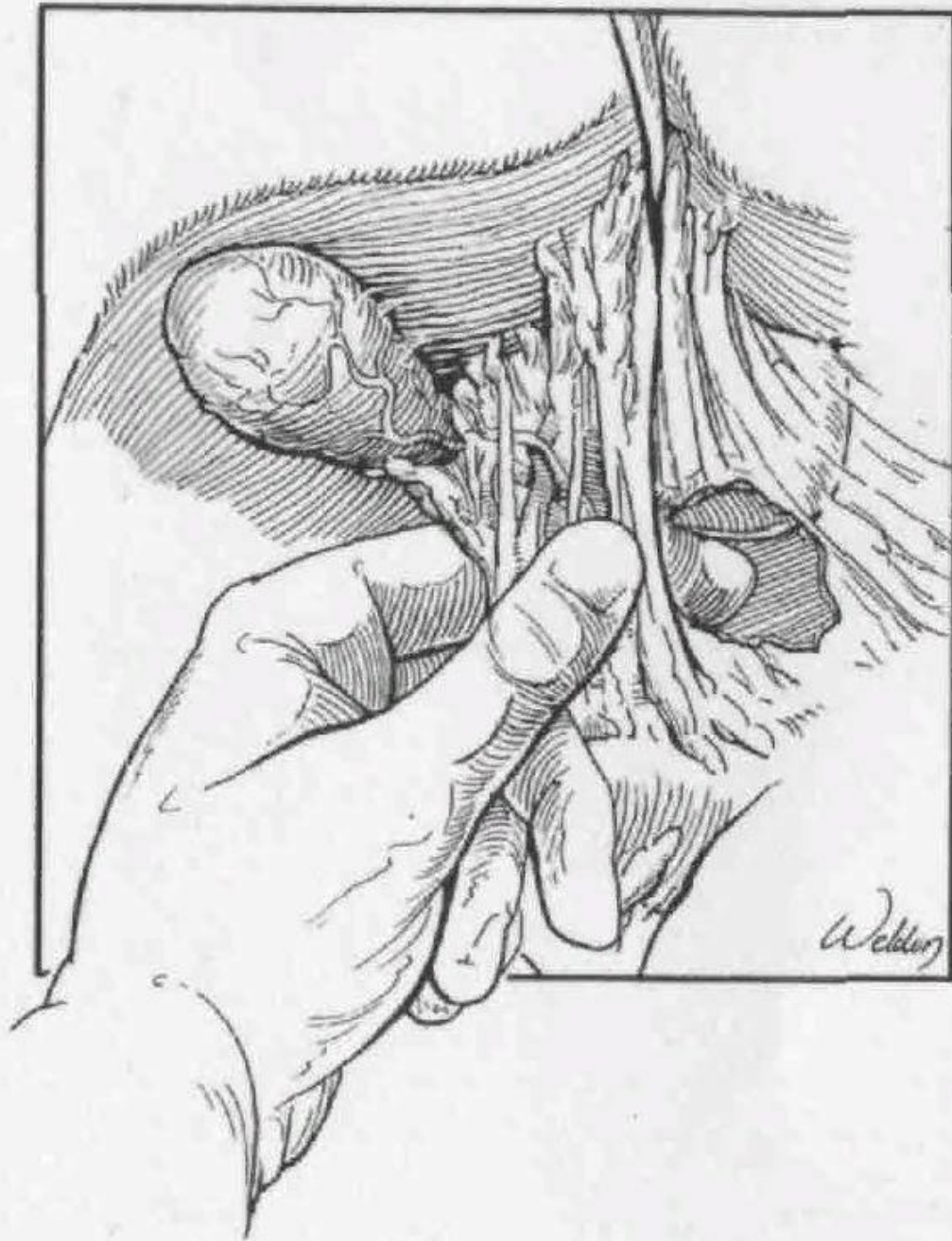


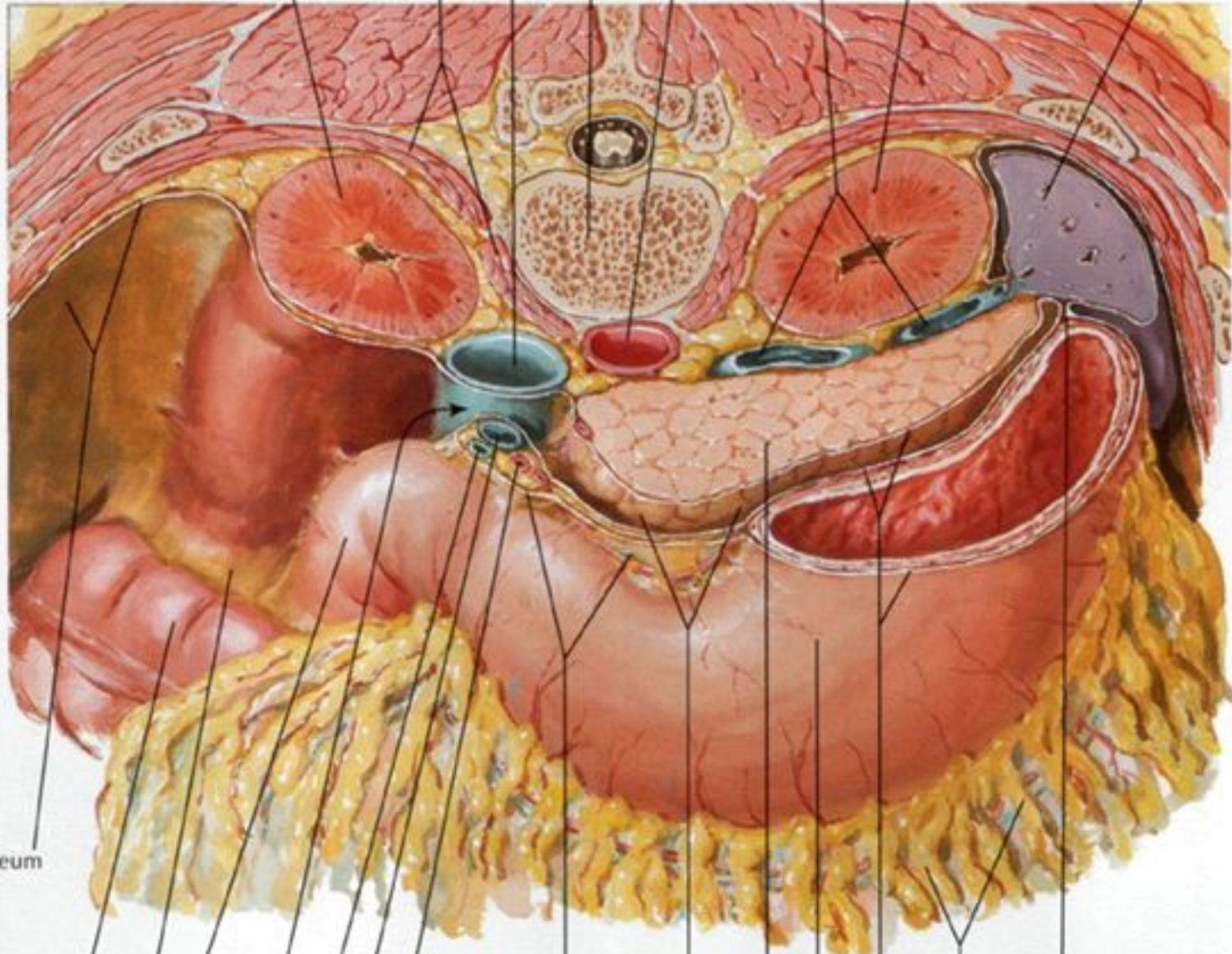
F. Netter M.D.











Parietal peritoneum

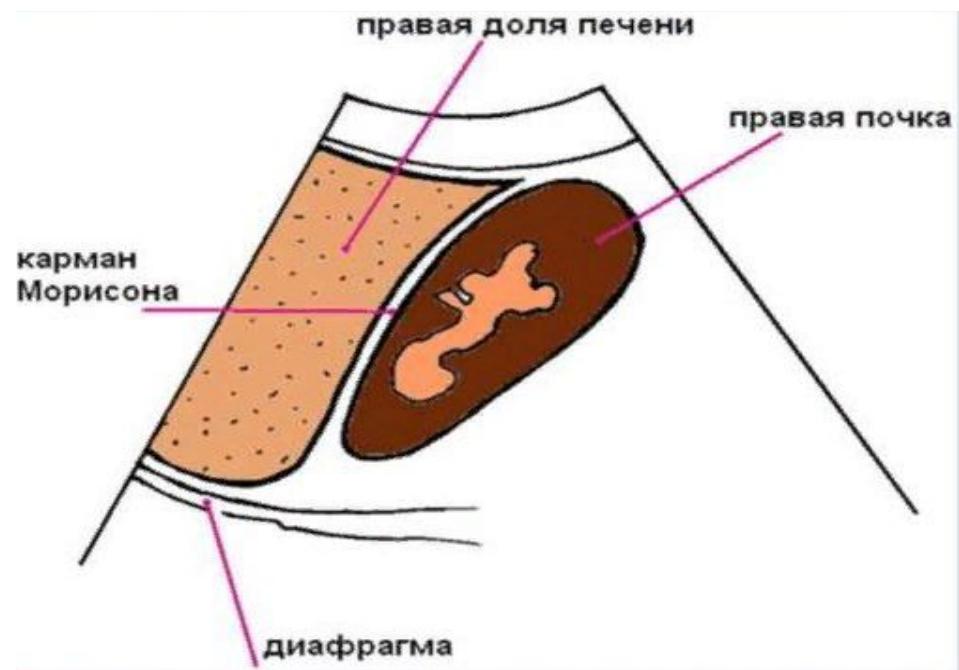
Transverse colon

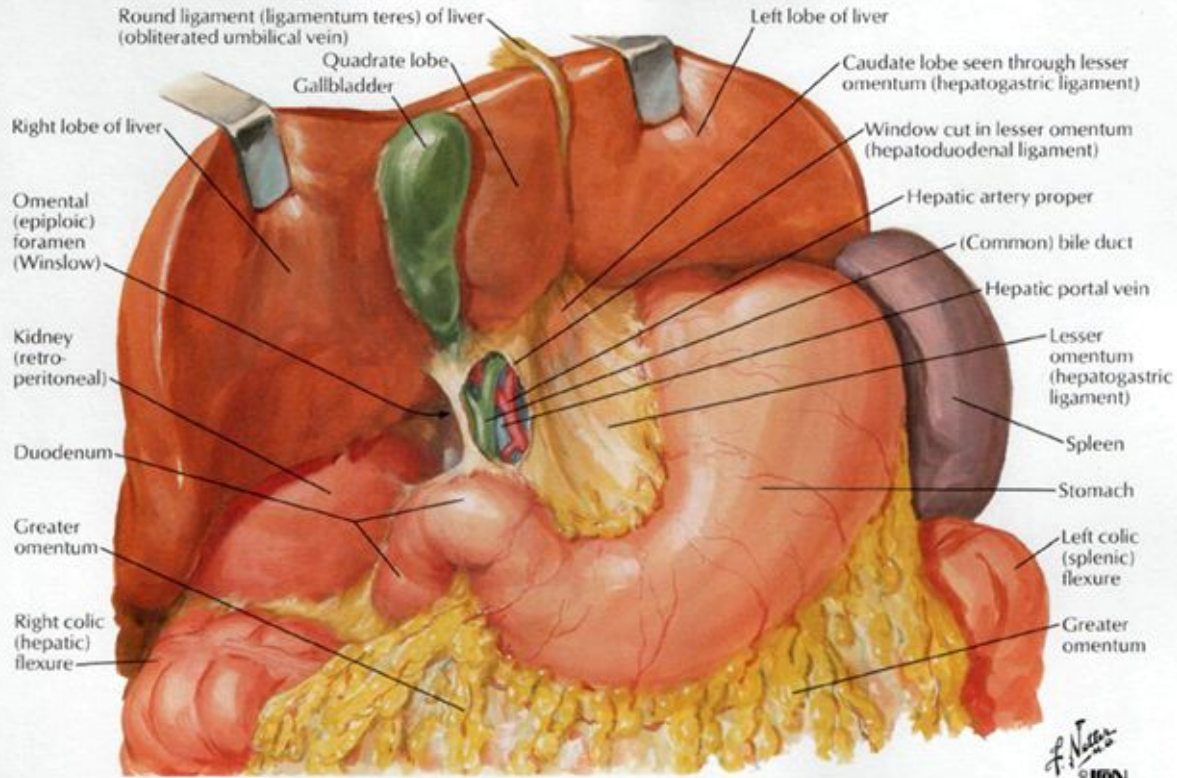
Transverse mesocolon

Duodenum

Gastrosplenic (gastrosplenic) ligament

Greater omentum





Variations in form of liver



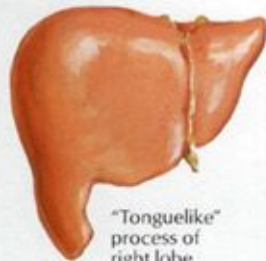
Very small left lobe, deep costal impressions



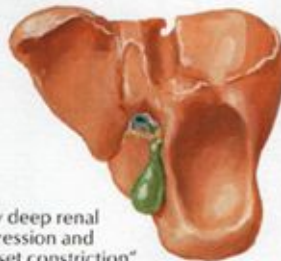
Complete atrophy of left lobe (left portal vein compression)



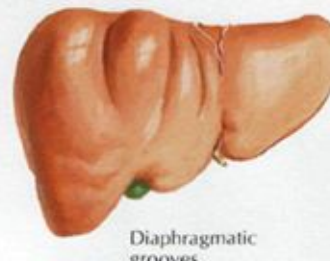
Transverse, "saddlelike" liver, relatively large left lobe



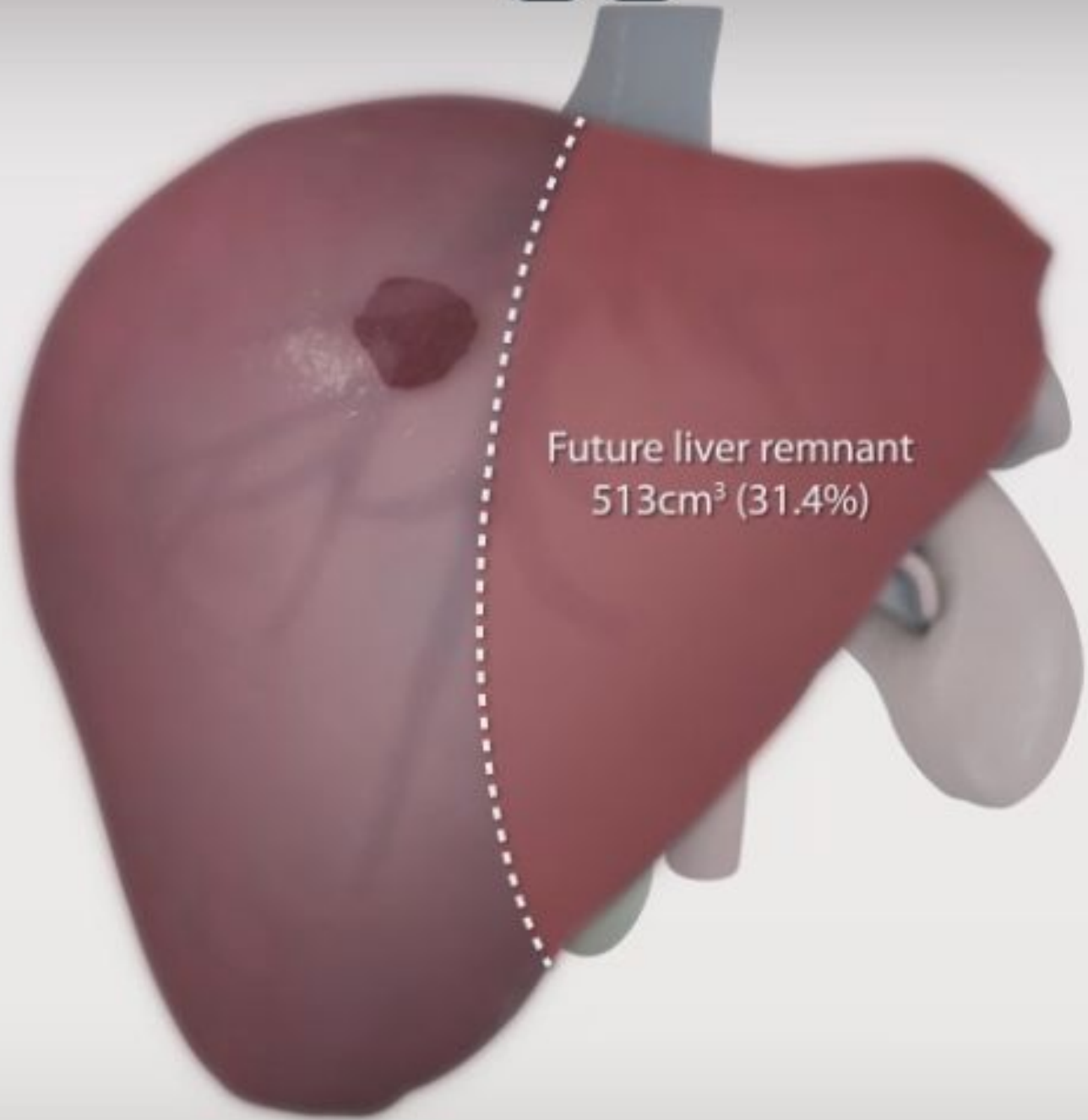
"Tonguelike" process of right lobe



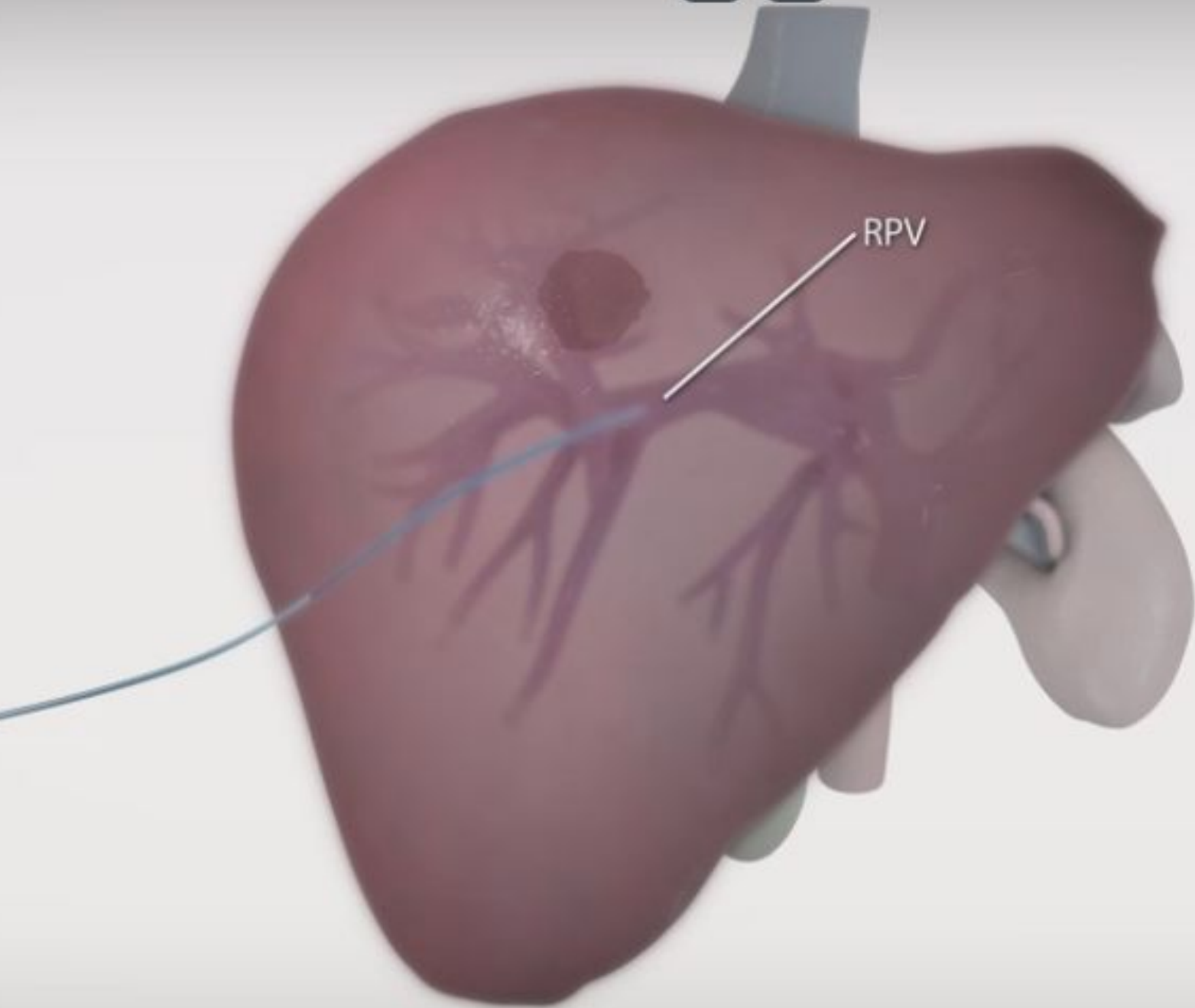
Very deep renal impression and "corset constriction"



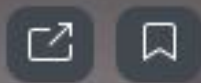
Diaphragmatic grooves



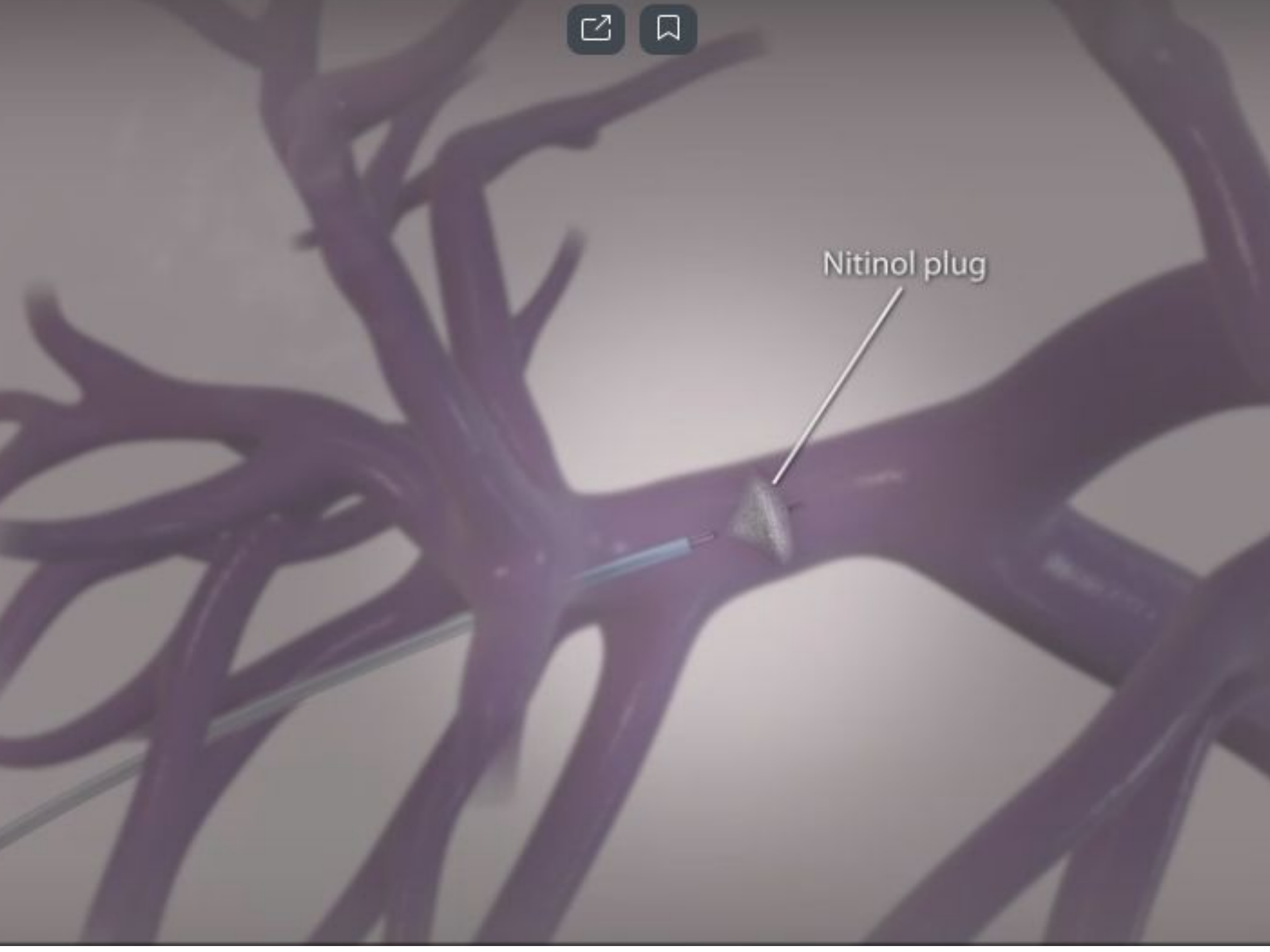
Future liver remnant
513cm³ (31.4%)

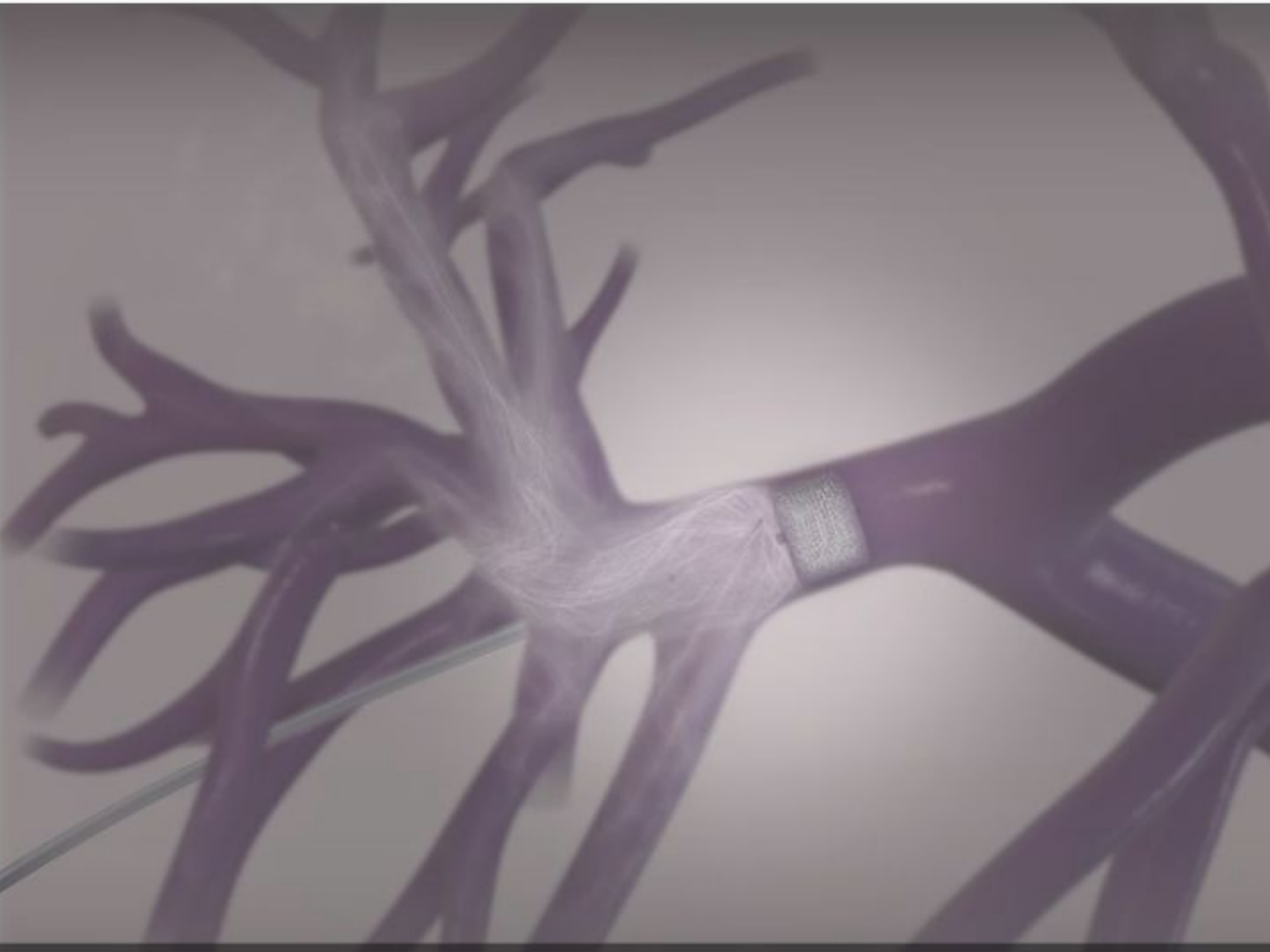


RPV



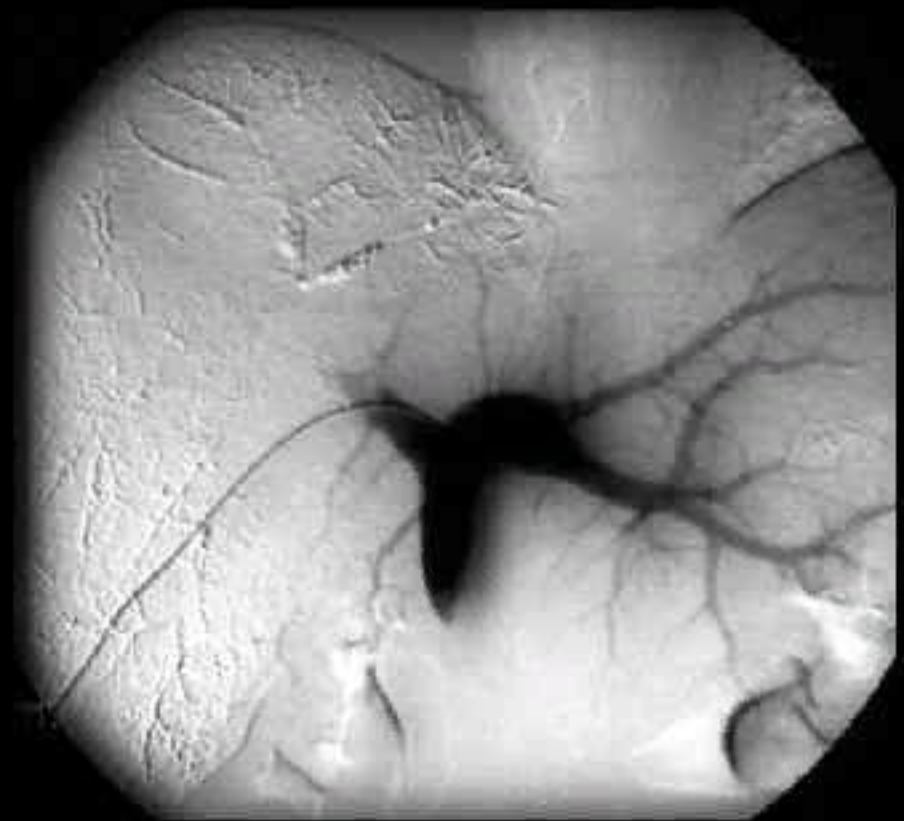
Nitinol plug



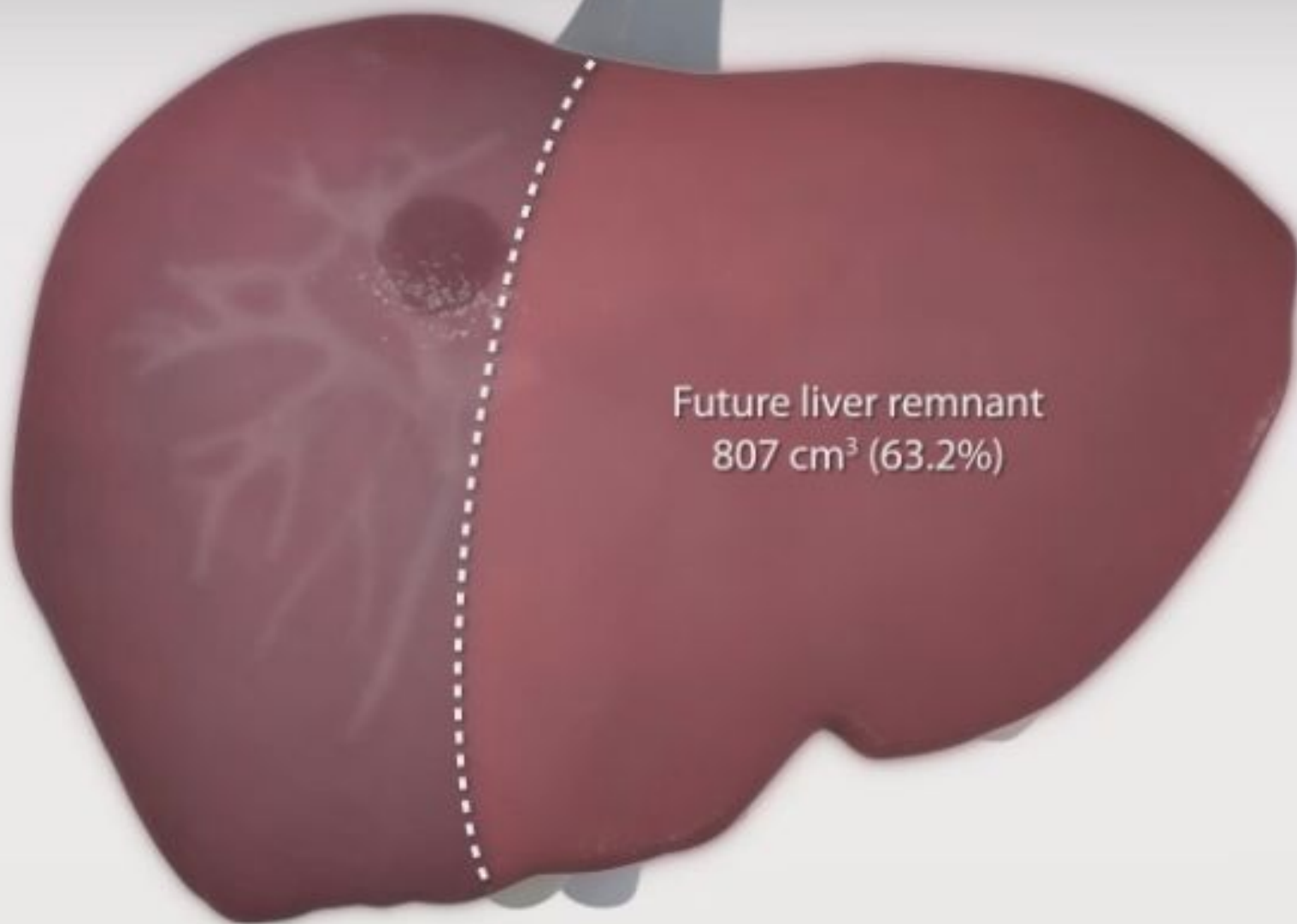




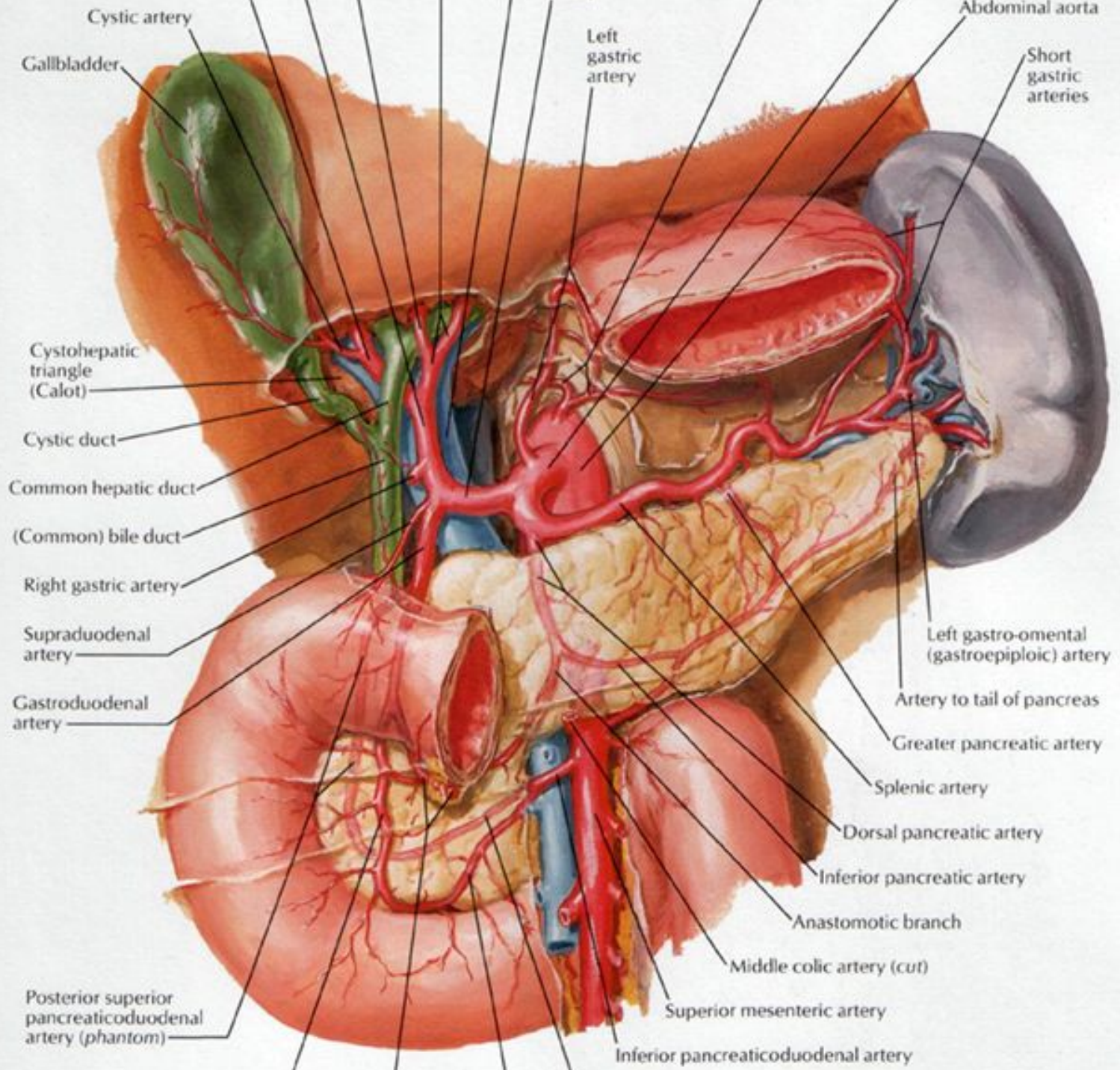
до ЭПВВ



после ЭПВВ



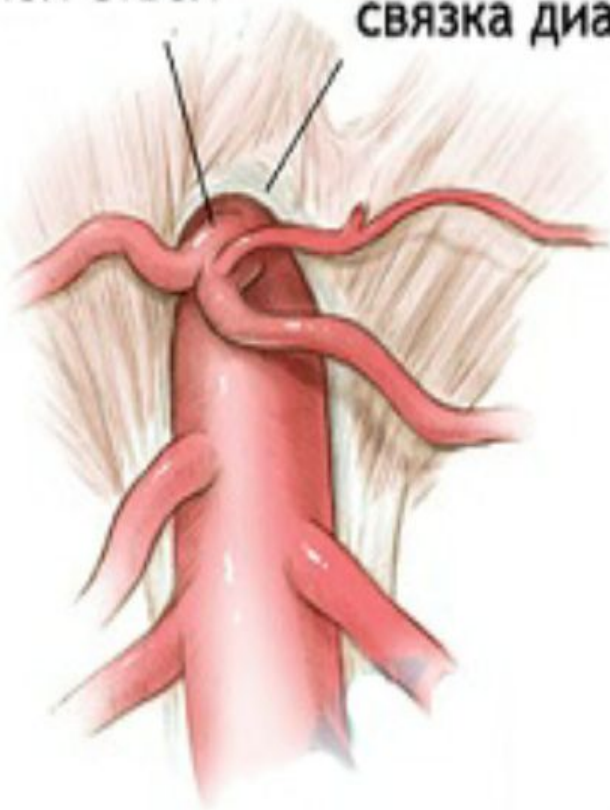
Future liver remnant
807 cm³ (63.2%)



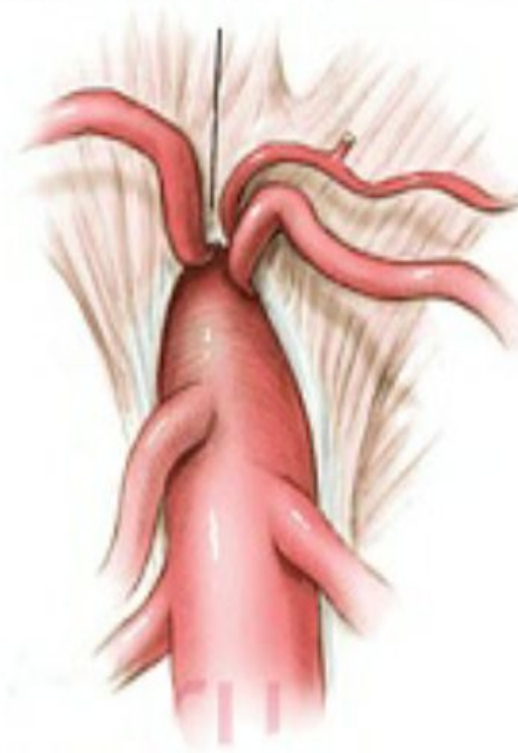
чревной ствол

средняя дугообразная
связка диафрагмы

связка диафрагмы
сдавливает чревной ствол

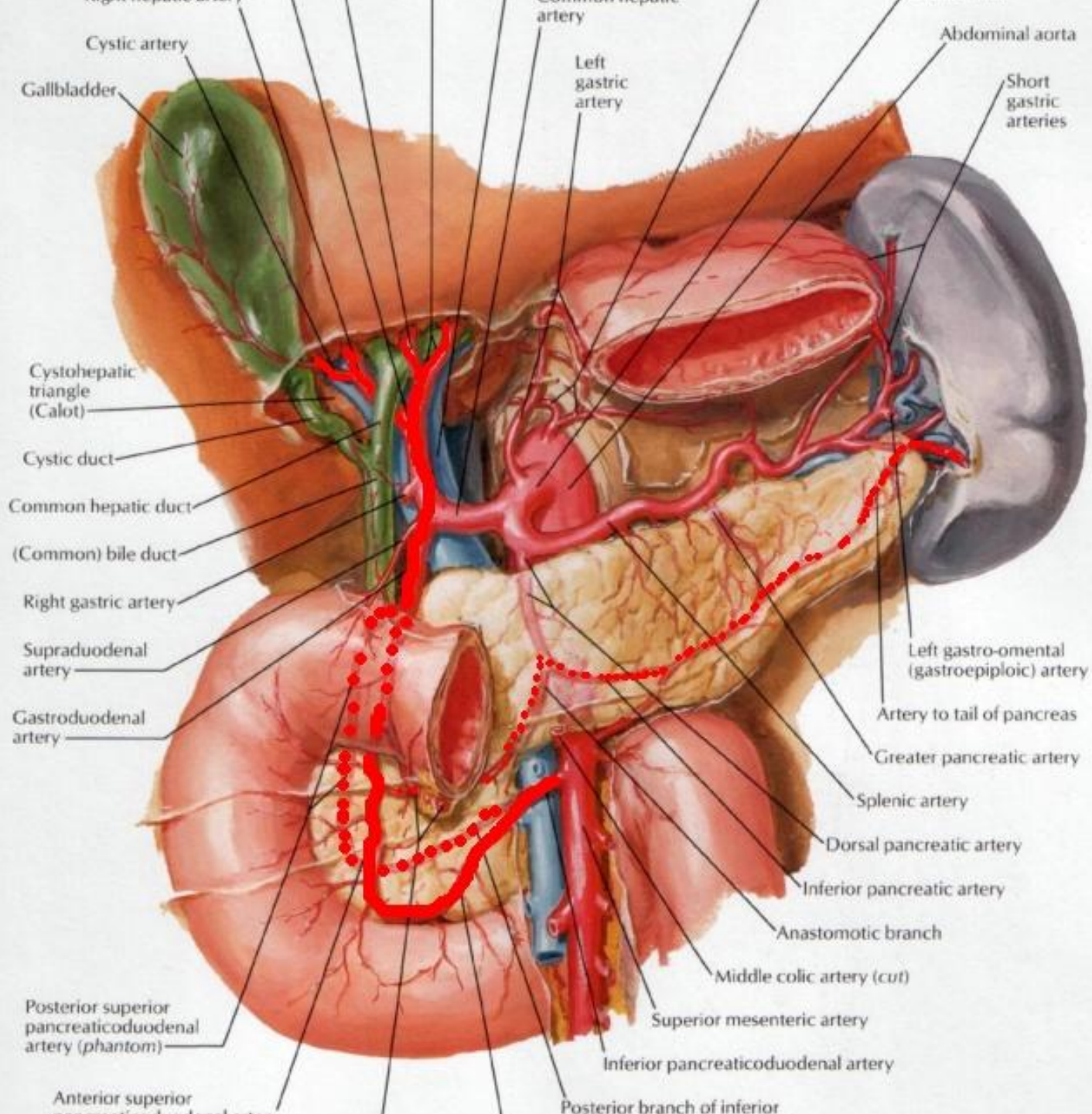


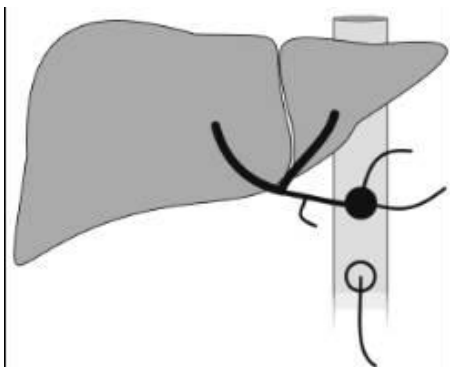
норма



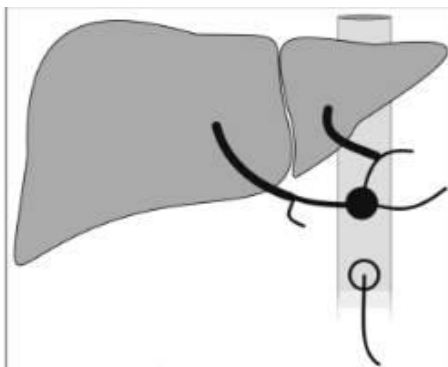
стеноз

**Схематическое изображение
синдрома Данбара (компрессионный стеноз чревного ствола).**

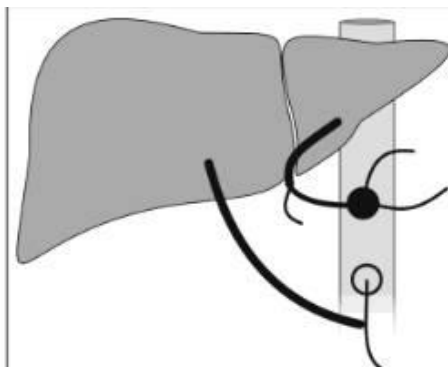




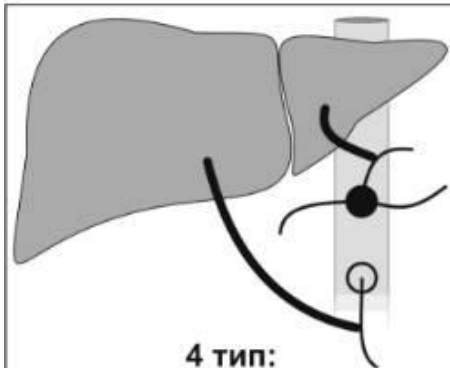
1 тип:
Типичная анатомия



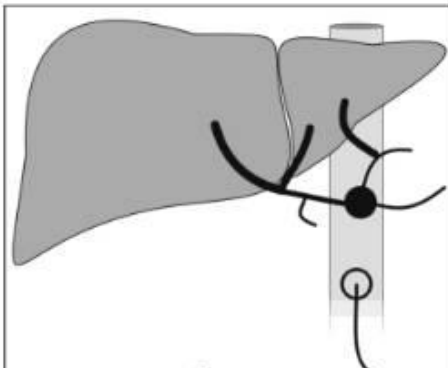
2 тип:
Замещающая ЛПА от ЛЖА



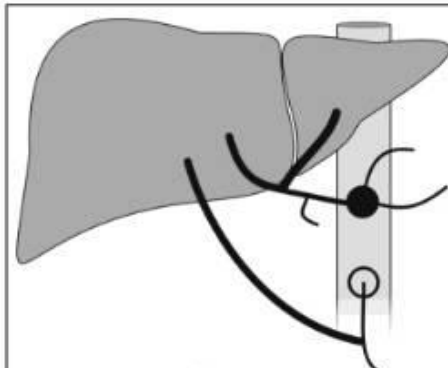
3 тип:
Замещающая ППА от ВБА



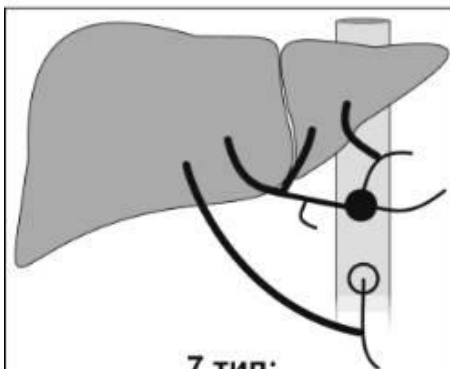
4 тип:
Замещающая ЛПА от ЛЖА
Замещающая ППА от ВБА



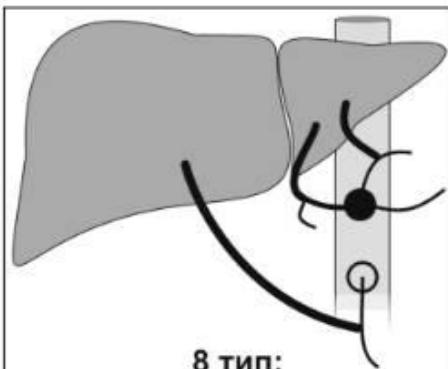
5 тип:
Добавочная ЛПА от ЛЖА



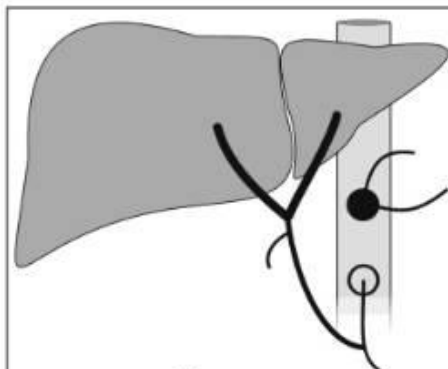
6 тип:
Добавочная ППА от ВБА



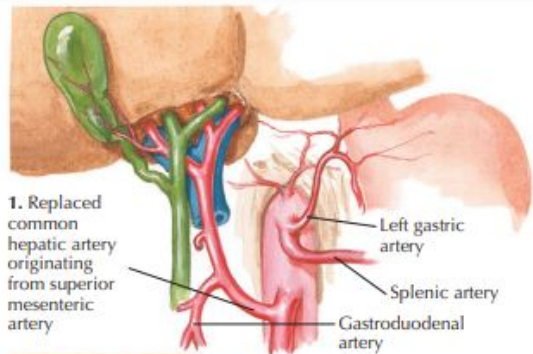
7 тип:
Добавочная ЛПА от ЛЖА
Добавочная ППА от ВБА



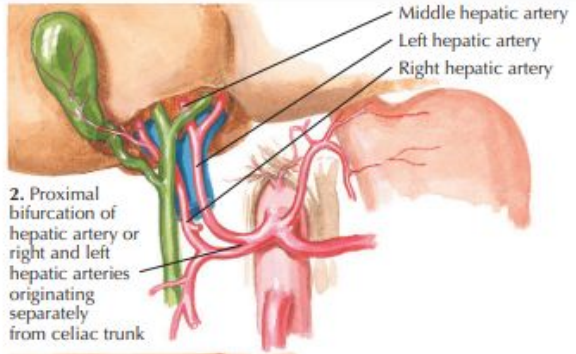
8 тип:
Добавочная ЛПА от ЛЖА
Замещающая ППА от ВБА



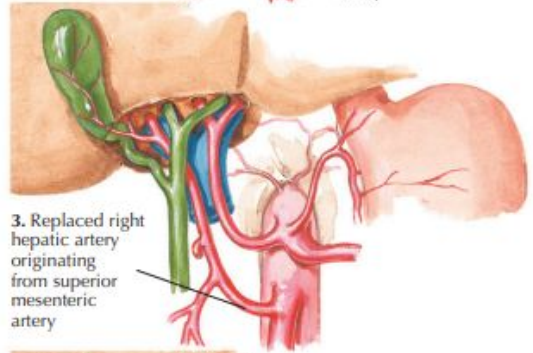
9 тип:
ОПА от ВБА



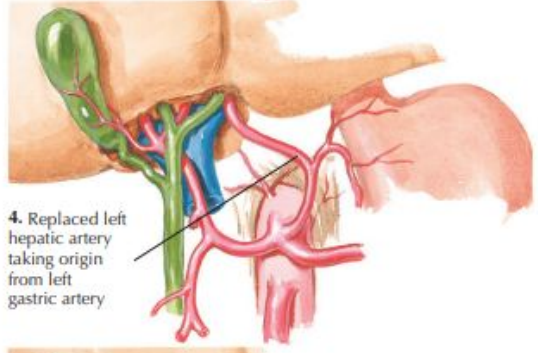
1. Replaced common hepatic artery originating from superior mesenteric artery



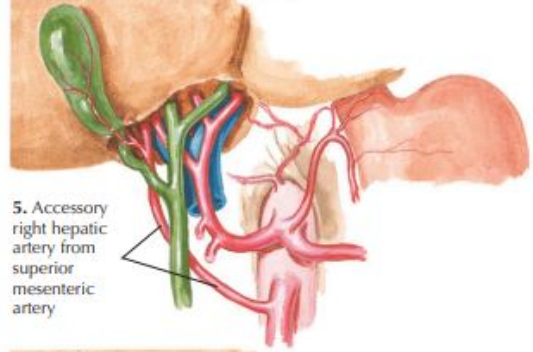
2. Proximal bifurcation of hepatic artery or right and left hepatic arteries originating separately from celiac trunk



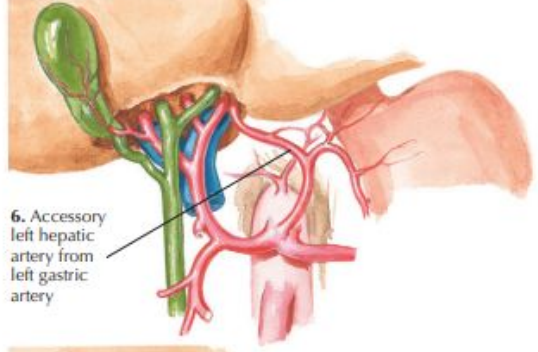
3. Replaced right hepatic artery originating from superior mesenteric artery



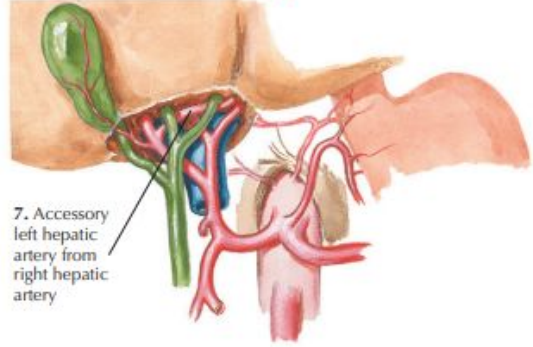
4. Replaced left hepatic artery taking origin from left gastric artery



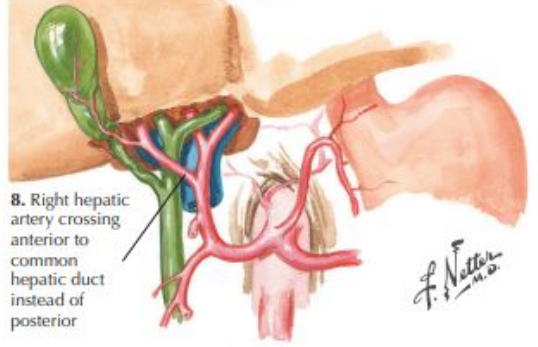
5. Accessory right hepatic artery from superior mesenteric artery



6. Accessory left hepatic artery from left gastric artery



7. Accessory left hepatic artery from right hepatic artery



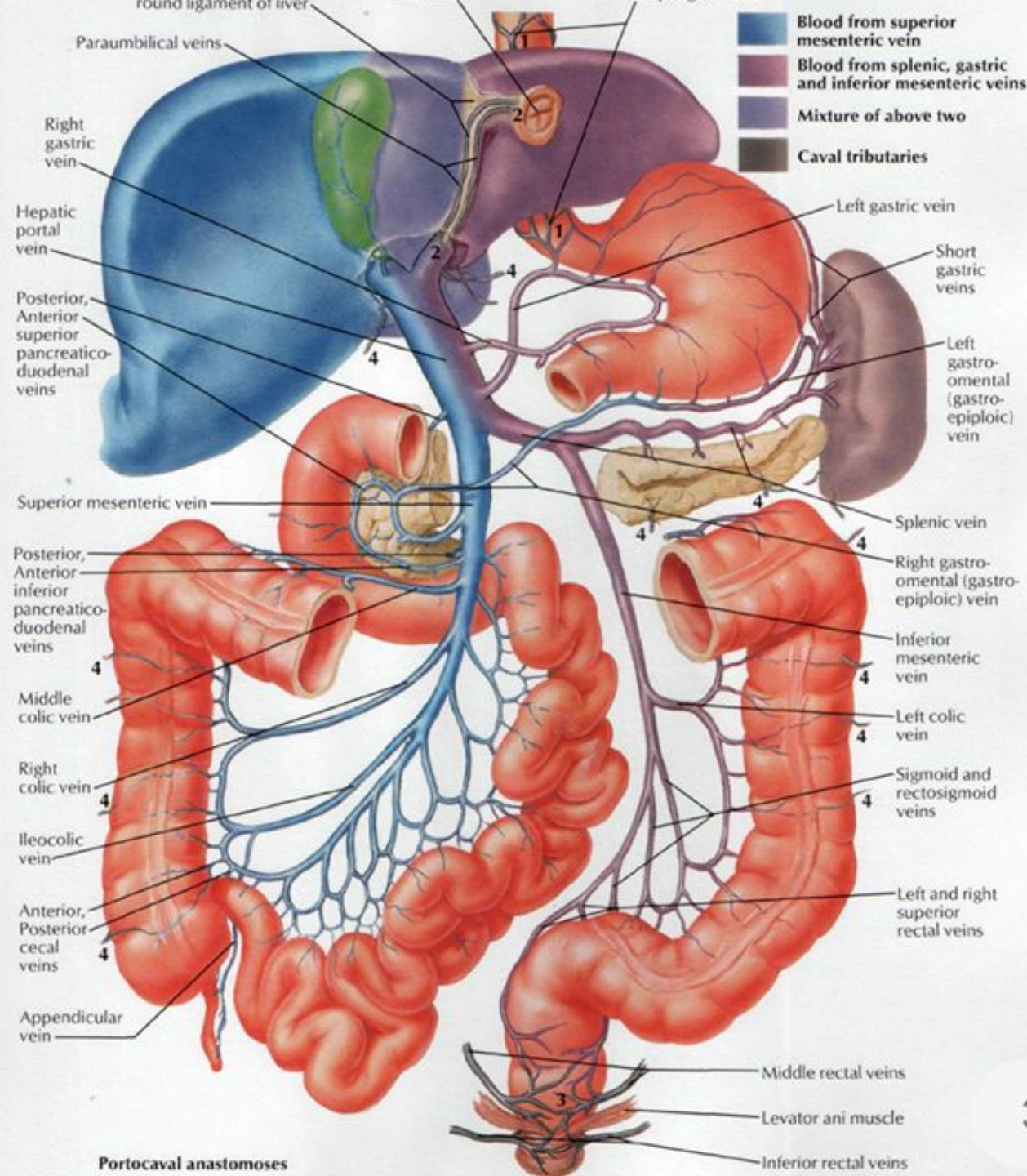
8. Right hepatic artery crossing anterior to common hepatic duct instead of posterior

F. Netter M.D.

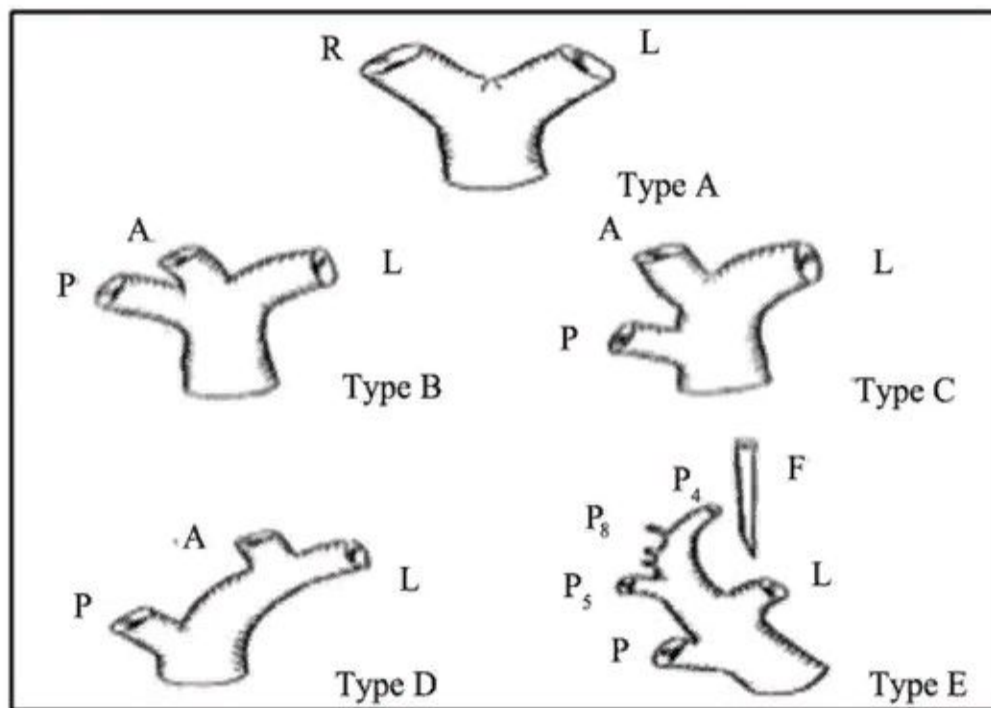
Операция из МКНЦ. Добавочная
артерия к S2 из ЛЖА питающая
гемангиому. + на операции видно
дольку Ридля

02:30 – и далее

<https://laparoscopyrf.ru/videos/292/jivaya-hirurgiya-i-rossiyskaya-shkola-po-laparoskopicheskoj-hirurgii-pecheni/>



Portocaval anastomoses



L — левая ВВ
 R — правая ВВ
 А — передняя правая ветвь
 Р — задняя правая ветвь

Type А — классический тип деления ВВ на правый и левый стволы

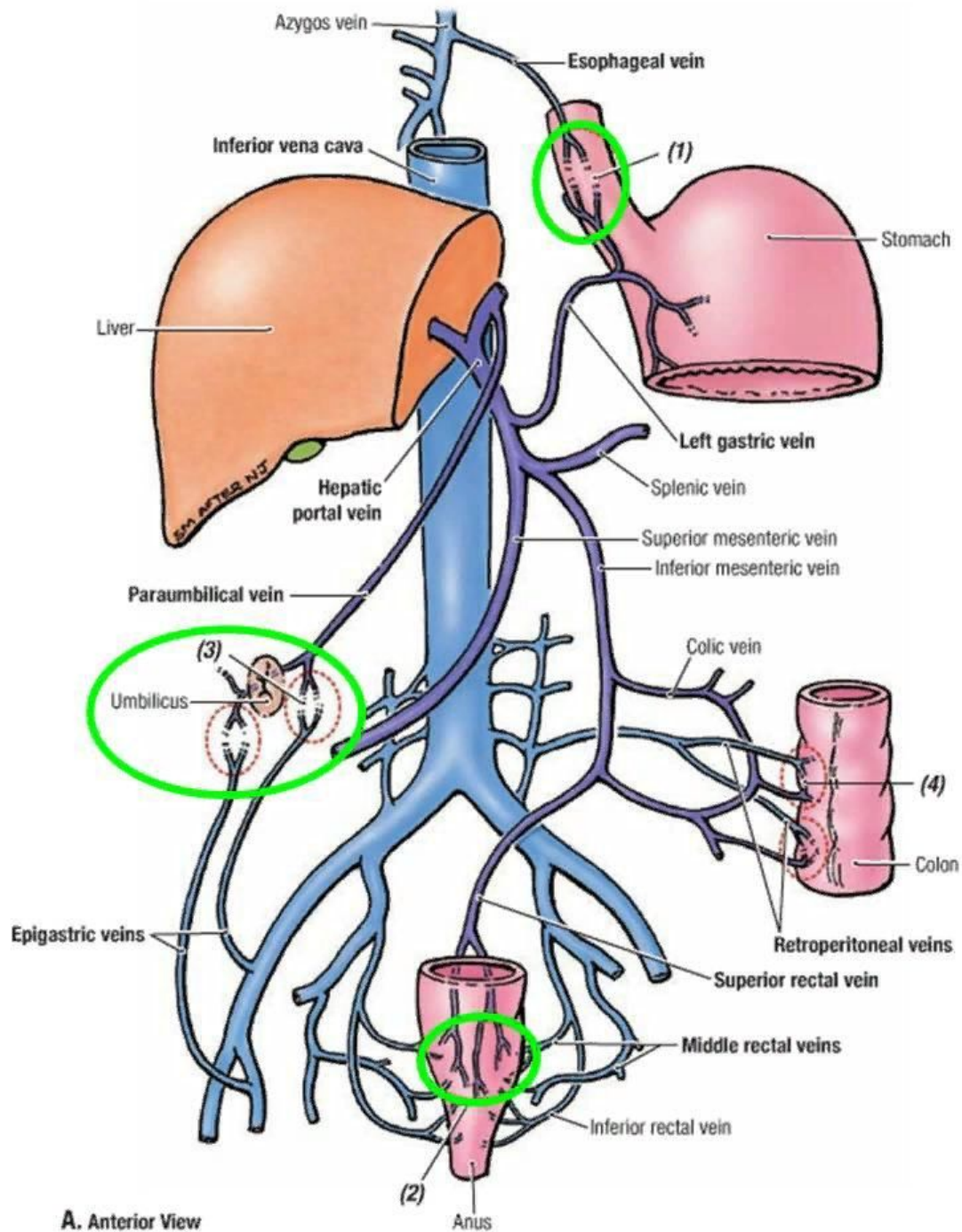
Type В — истинная трифуркация, без основного ствола правой воротной вены

Type С — внепеченочное отхождение передней ветви правой воротной вены

Type D — внутripеченочное отхождение передней ветви правой воротной вены

Type E — отсутствие целостной ветви передней правой воротной вены

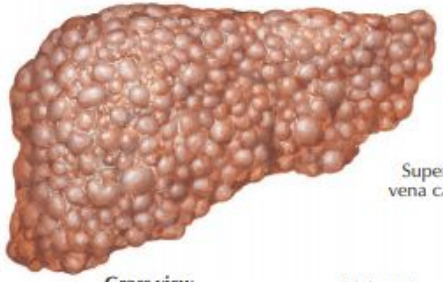
Отхождение отдельных сегментарных ветвей от ВВ



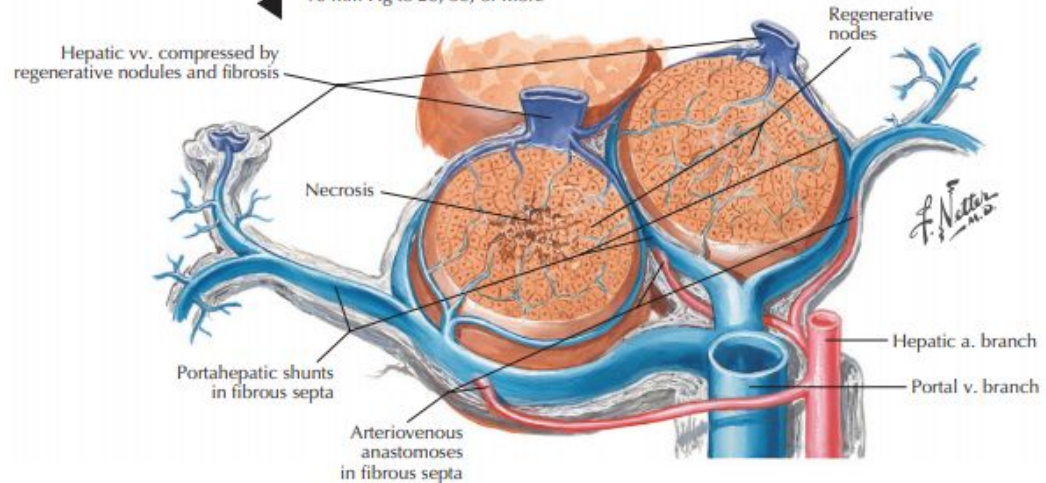
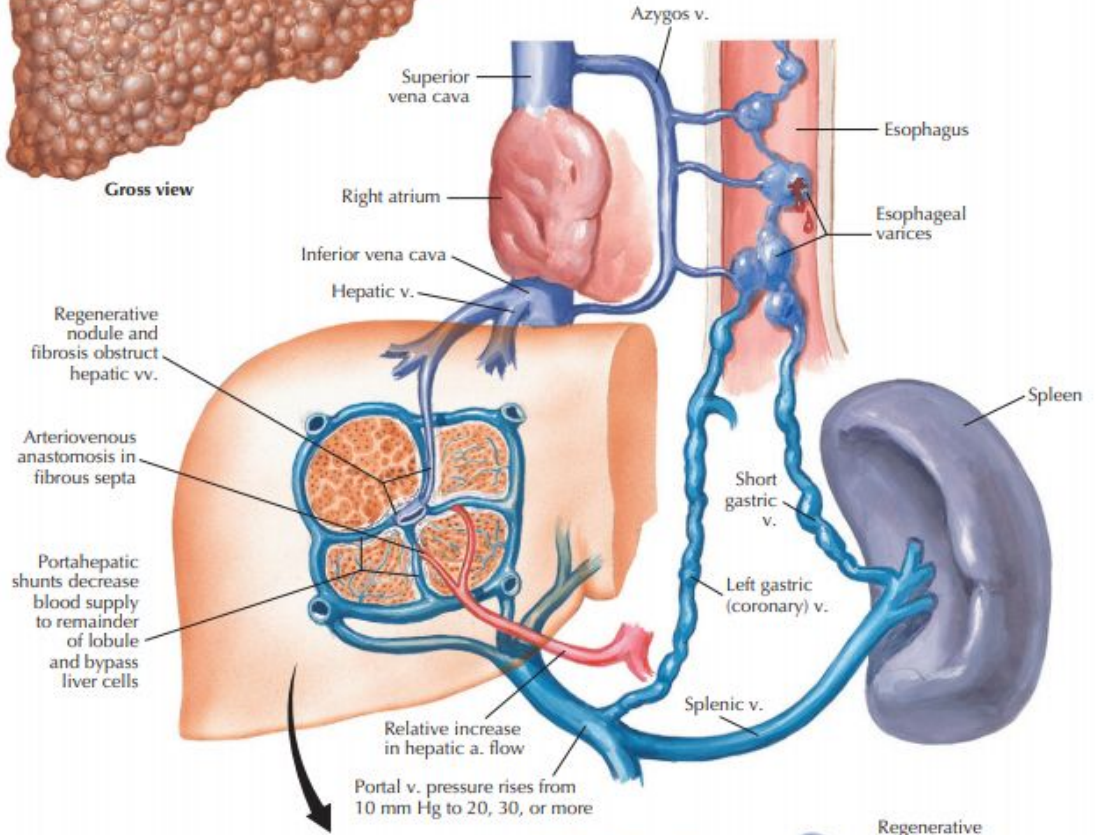
A. Anterior View



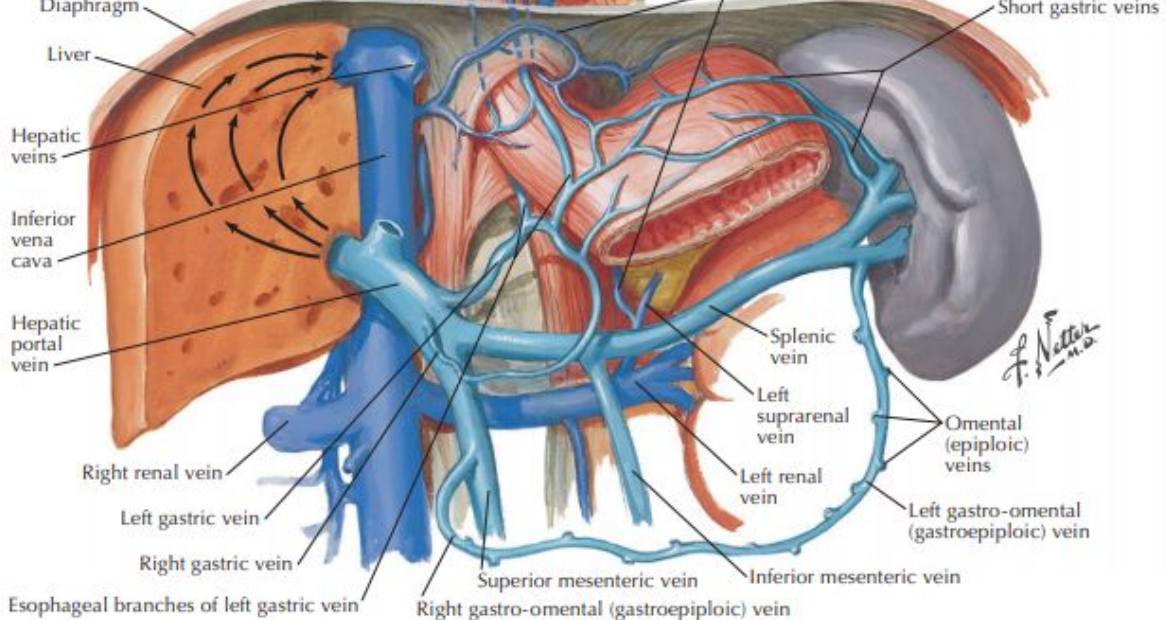
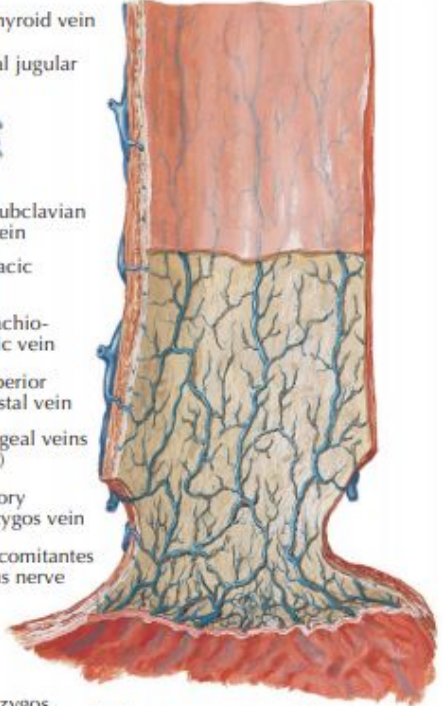
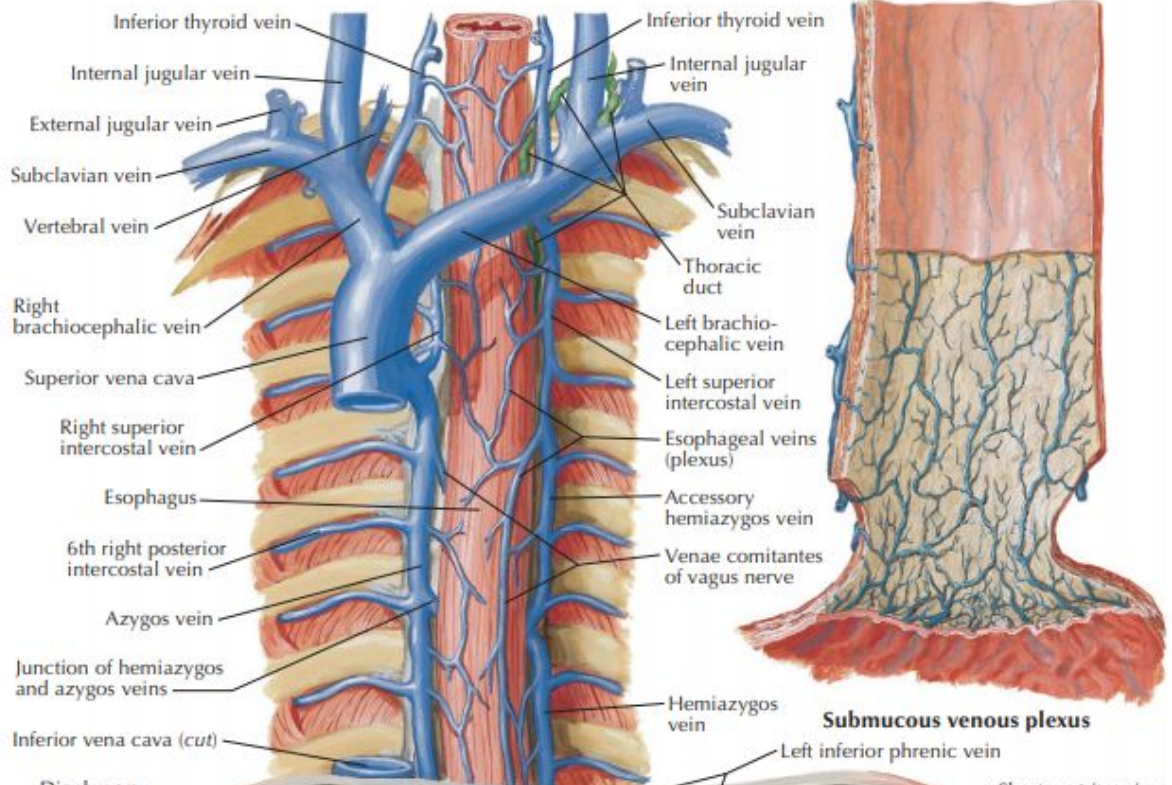
Regular formation of small nodules and thin septa, characteristic of Laennec's cirrhosis



Gross view



F. Netter M.D.



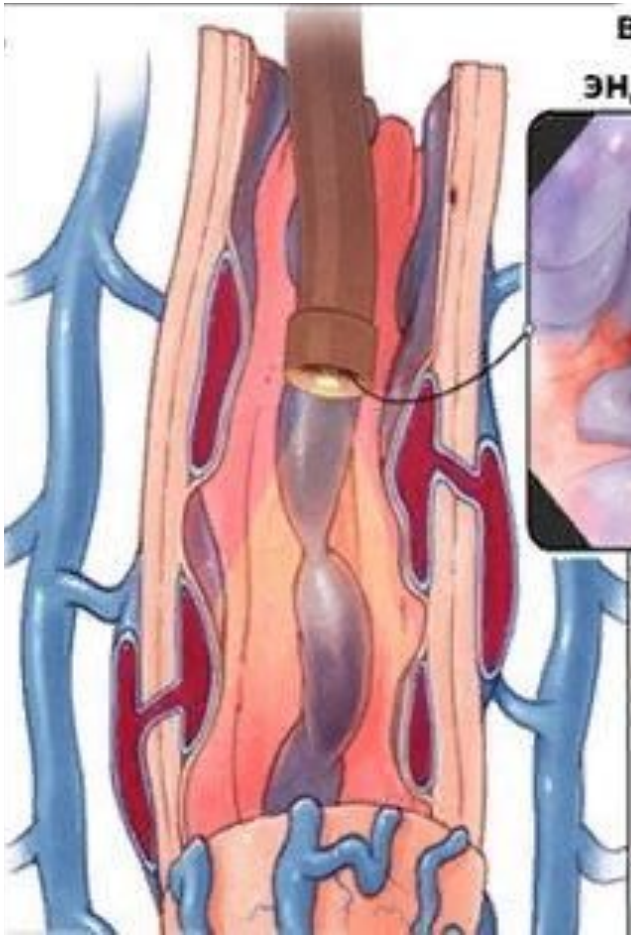
F. Netter M.D.

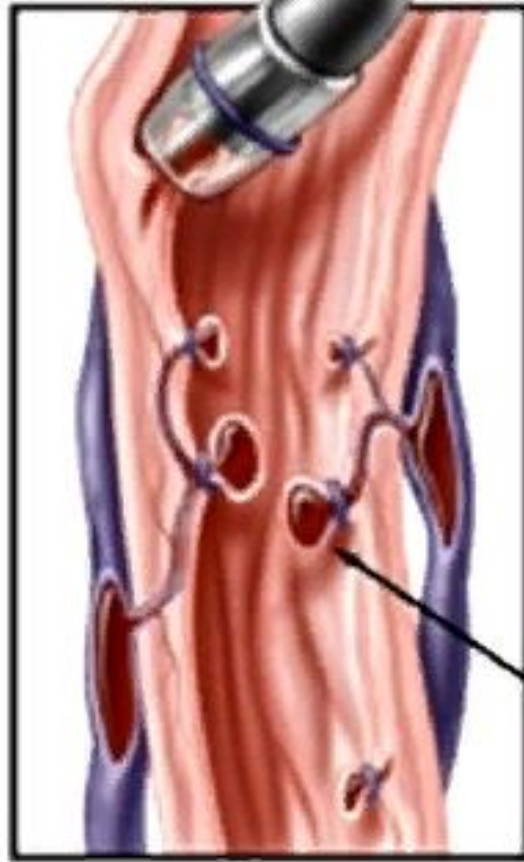
эзофагоскопия

вид при
эндоскопии



расширенная вена пищевода



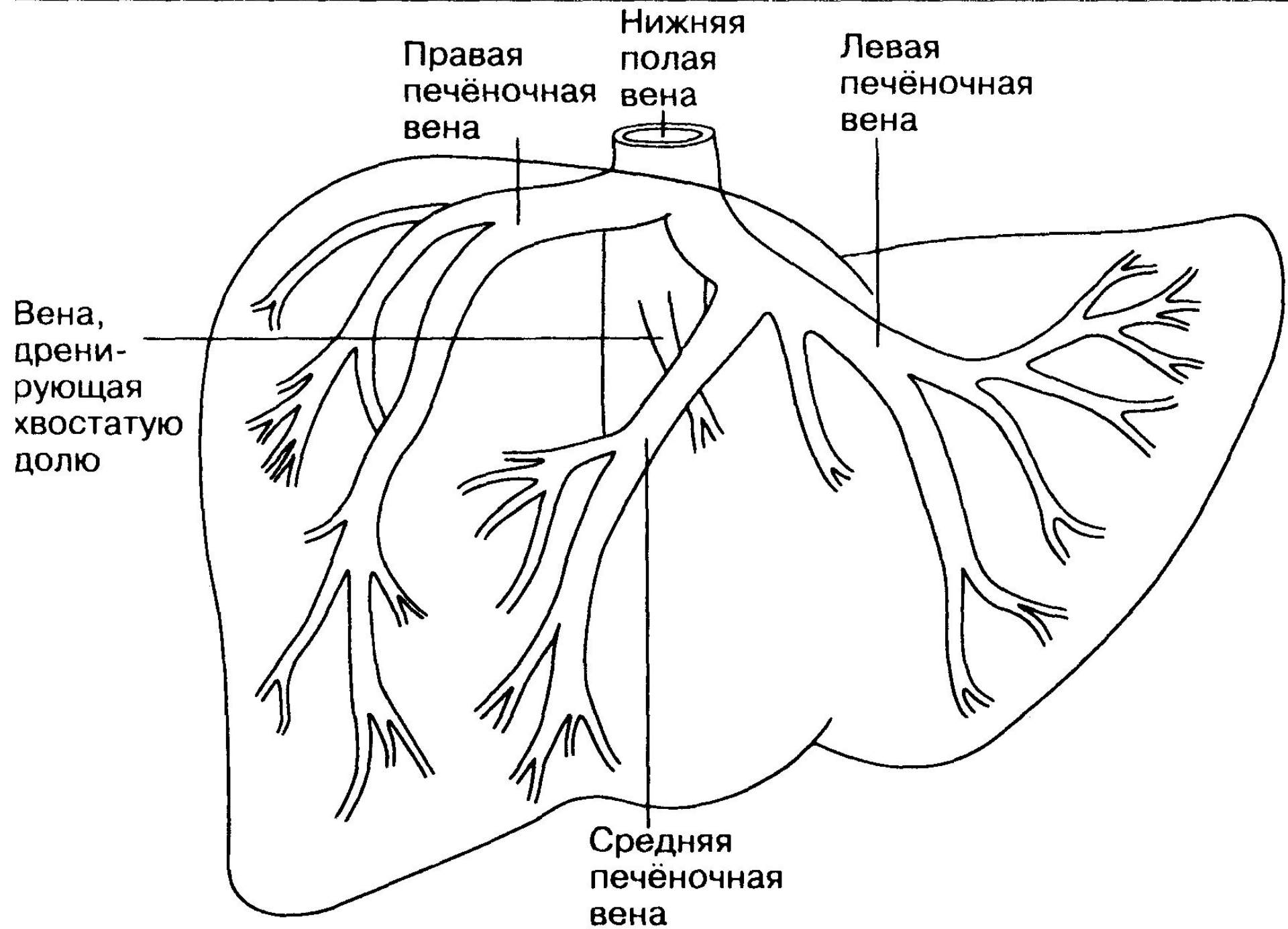


**Лигированные ВРВ
пищевода**

Если захочется видео из МКНЦ по
лигированию вен.

Смотреть 07:32 – 09:15

- <https://yandex.ru/video/preview/?filmId=3322308443689264692&from=tabbar&parent-requestId=1587826932223447-855981273579961176000291-production-app-host-sas-web-yp-75&text=кровоотечение+из+врв+пищевода+мкб+10>



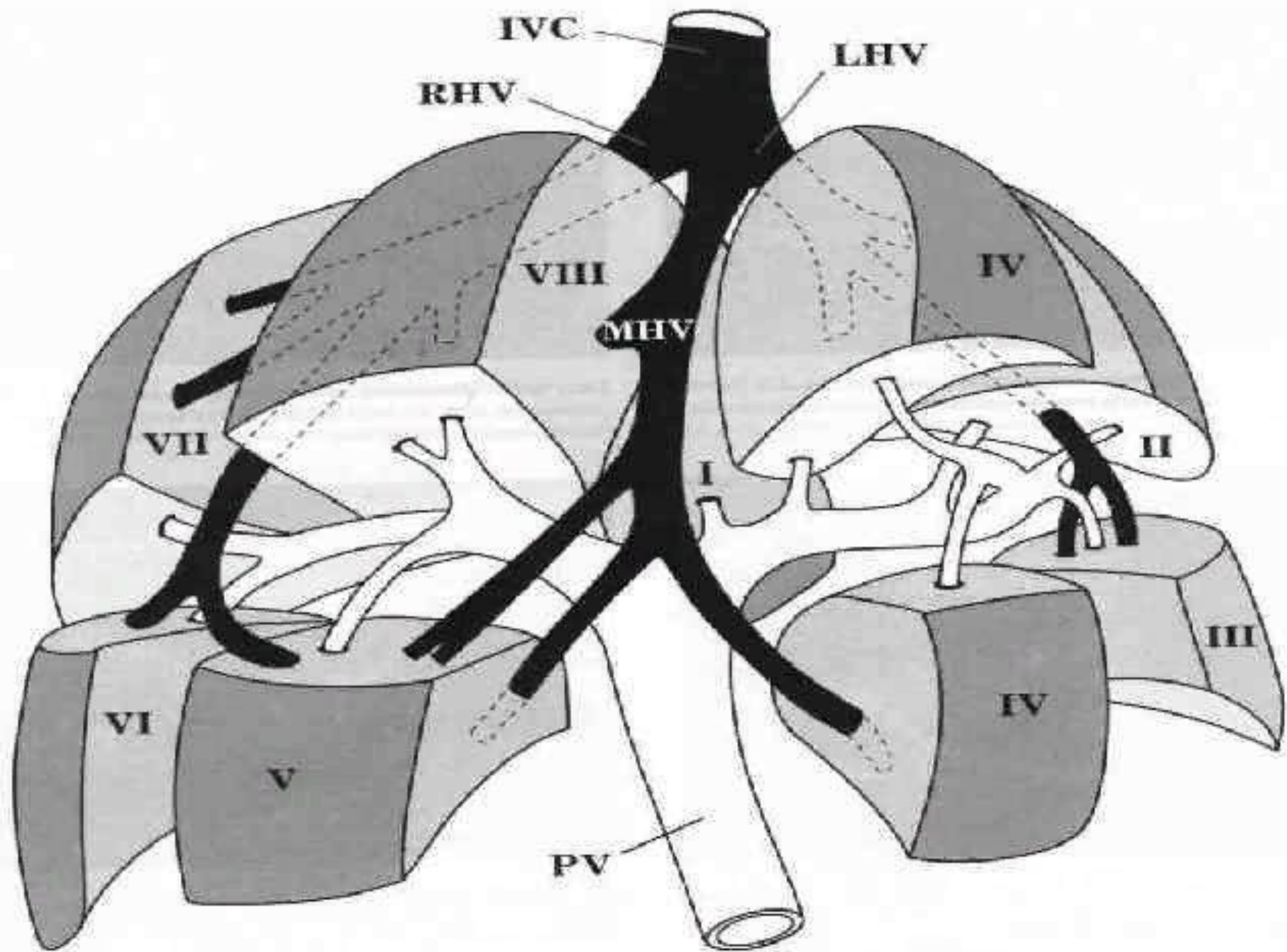


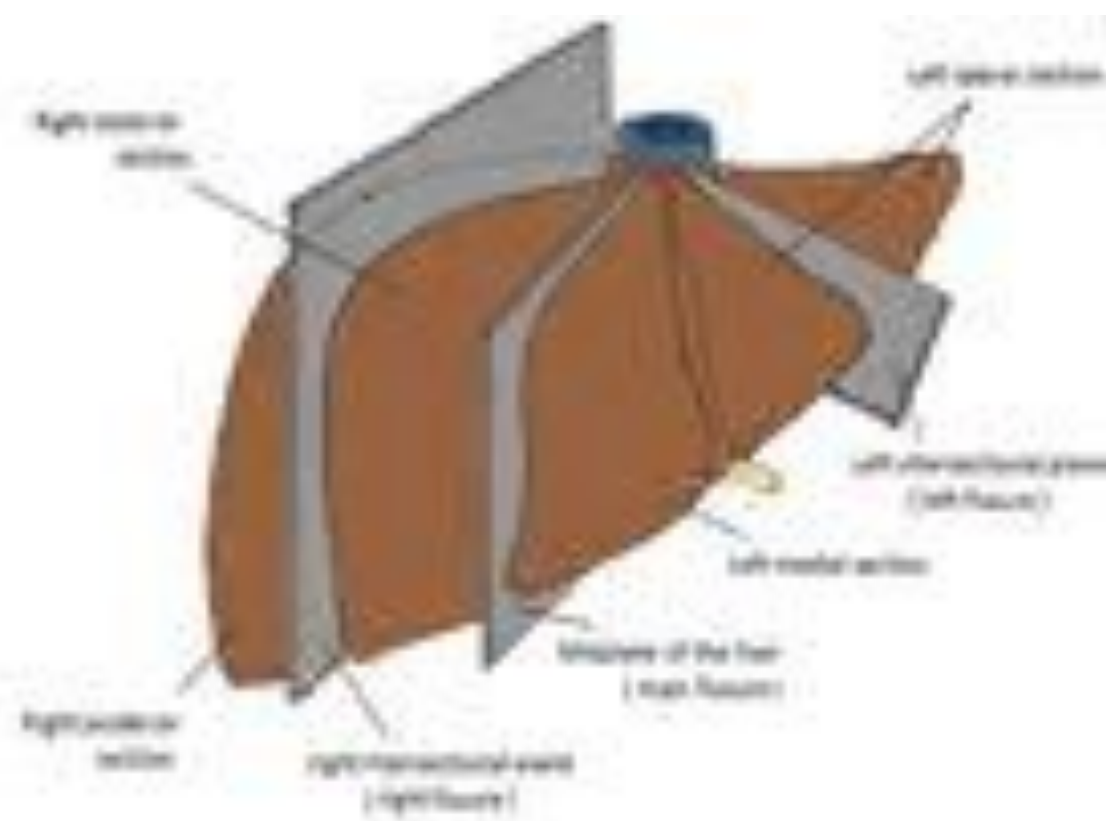


Видео с операции. Чтобы понять
где каваальные ворота печени и
печеночные вены.

02:00 – 06:15

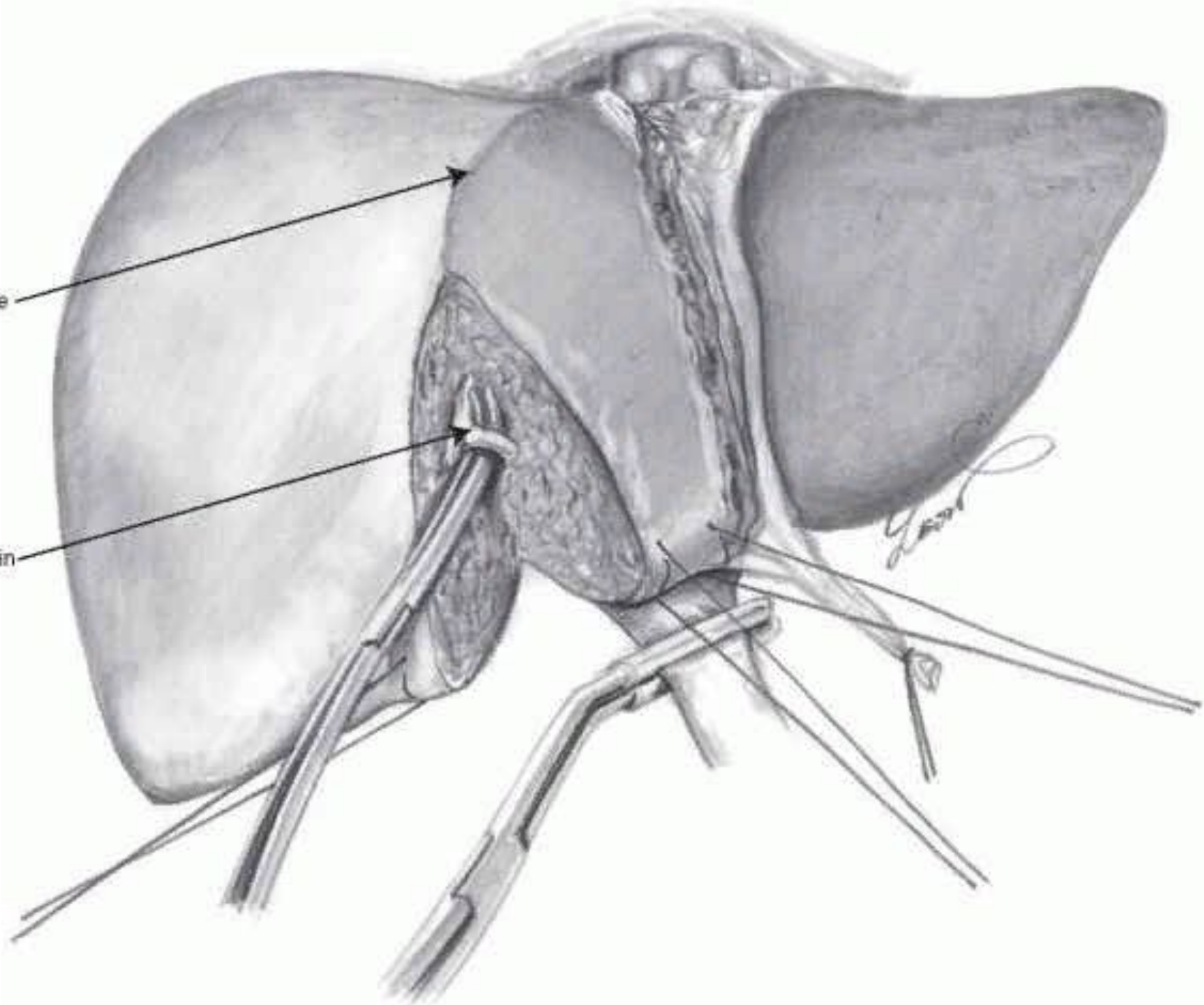
- <https://www.youtube.com/watch?v=CajDSIIVZp8&feature=youtu.be>

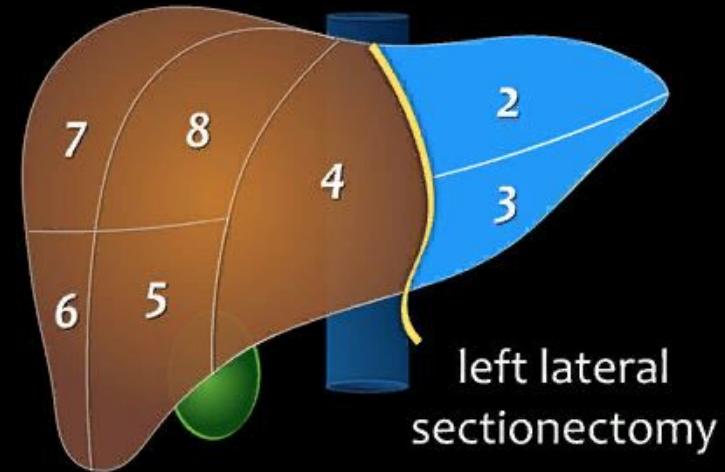
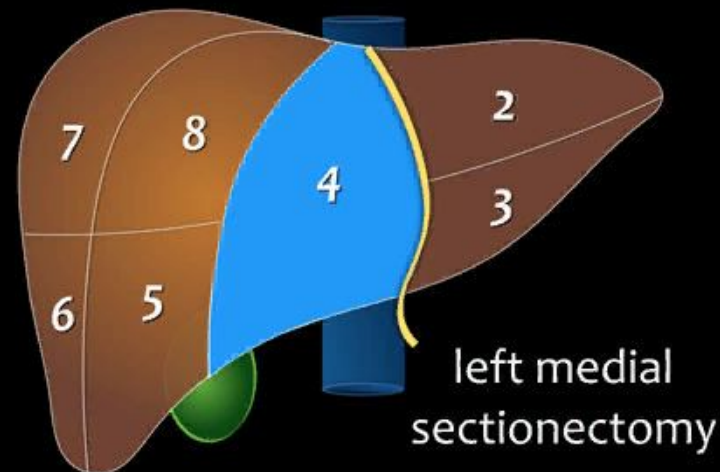
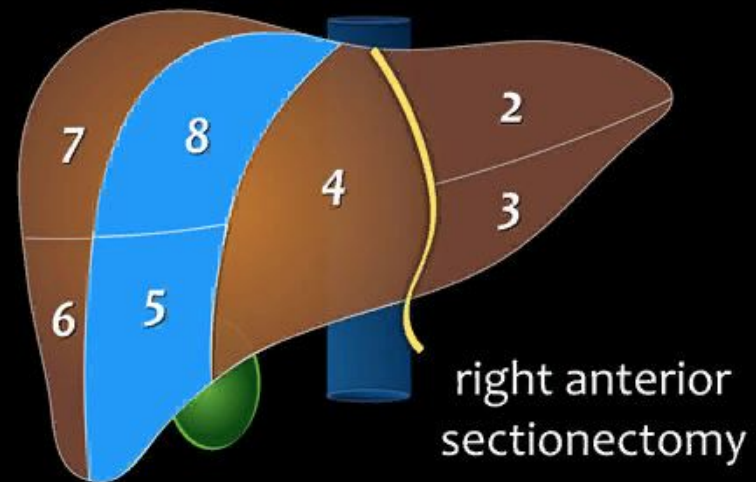
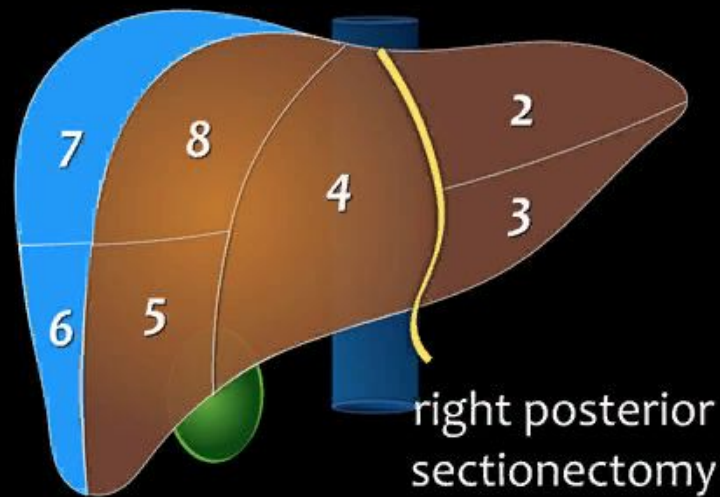




Cantlie line

Middle hepatic vein





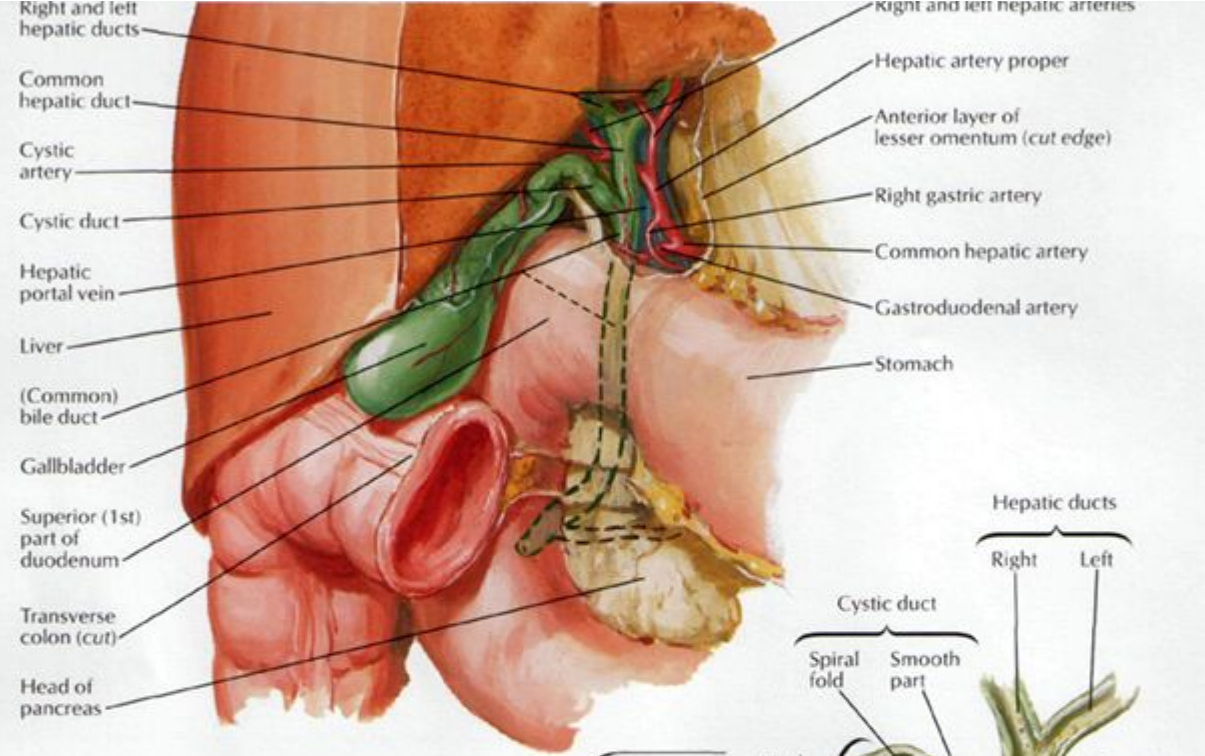
Классификация обширных резекций печени (по В.С. Шапкину, 1967).

- Гемигепатэктомия правосторонняя (удаление сегментов 5, 6, 7, 8).
- Гемигепатэктомия левосторонняя (удаление сегментов 2, 3, 4±1).
- Расширенная правосторонняя гемигепатэктомия (удаление сегментов 5, 6, 7, 8, 4±1).
- Расширенная левосторонняя гемигепатэктомия (удаление сегментов 2, 3, 4, 5, 8±1).

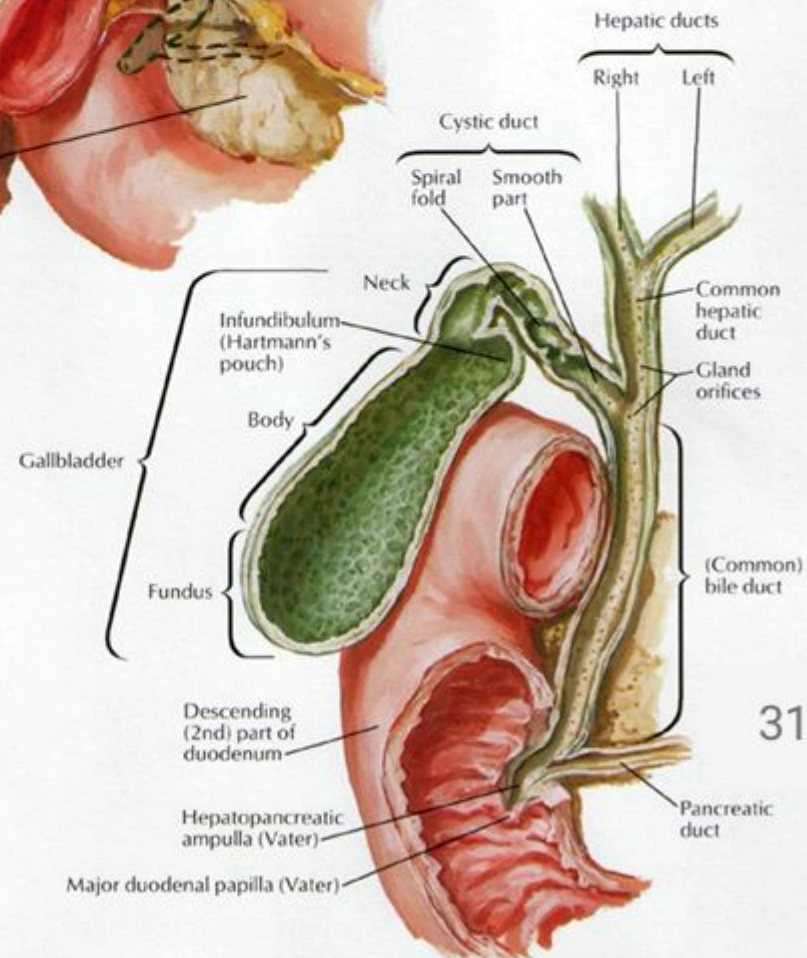
Видео по резекции печени.
Хорошо видно линию Рекса-
Кантли.

03:40 – и далее

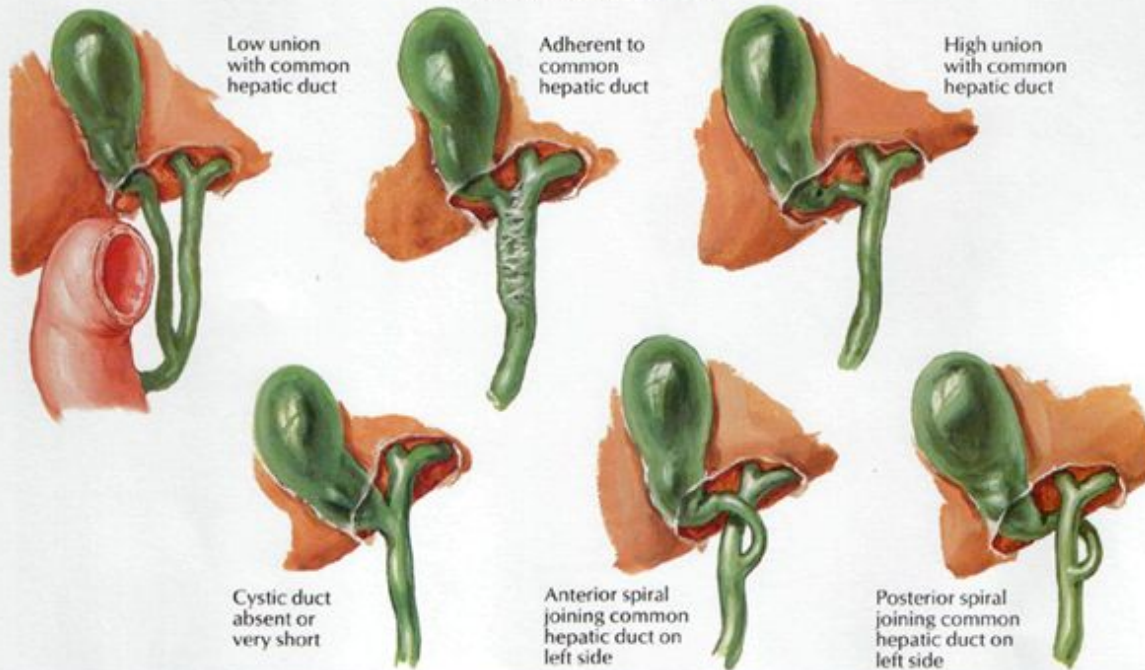
- <http://pie.med.utoronto.ca/TVASurg/project/righthep-pvembolization/>



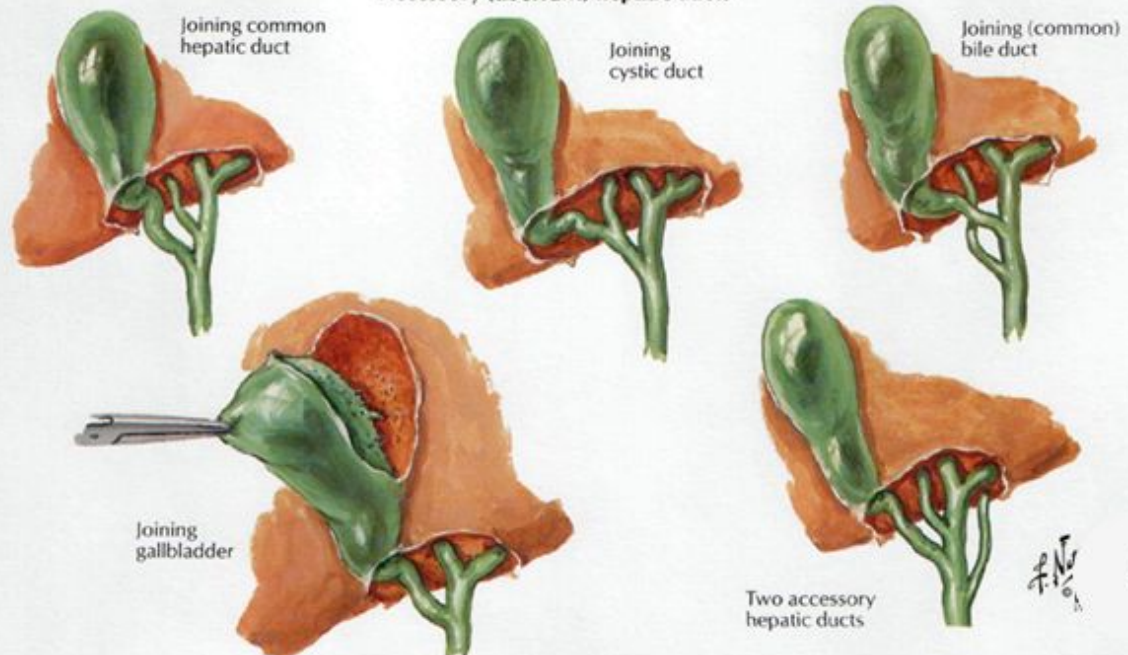
F. Netter
 M.D.
 © 1989
 W.B. SAUNDERS
 COMPANY

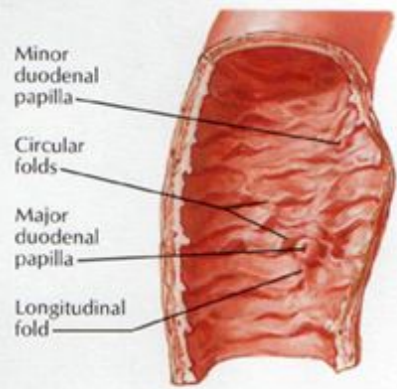


Variations in cystic duct

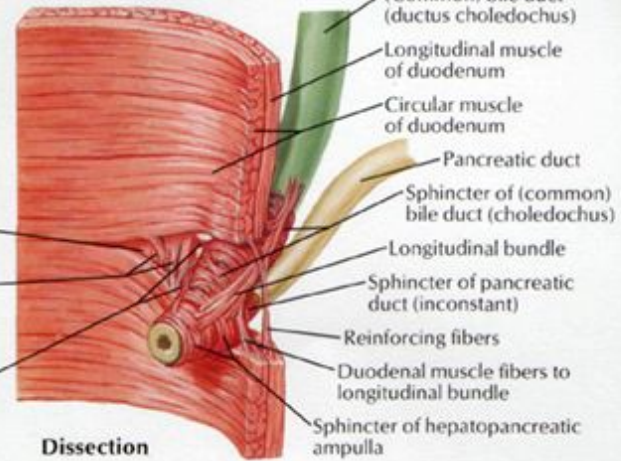
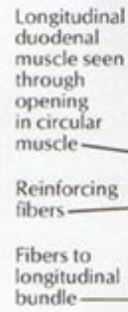


Accessory (aberrant) hepatic ducts

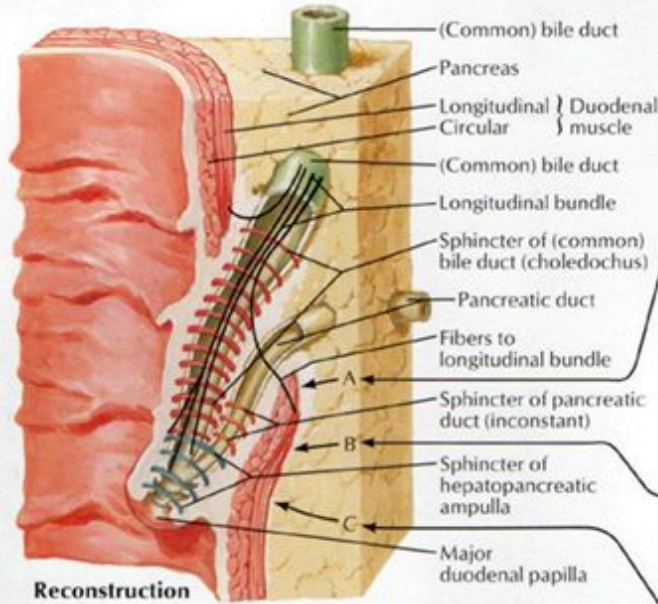




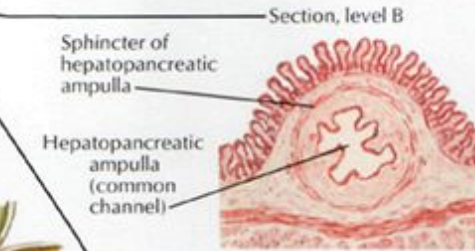
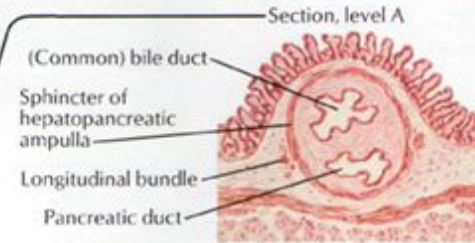
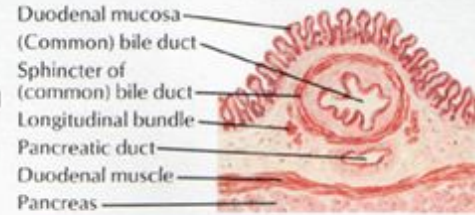
Interior of descending (2nd) part of duodenum



Dissection

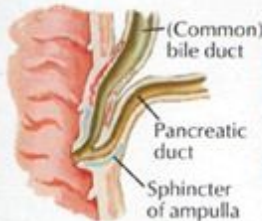


Reconstruction

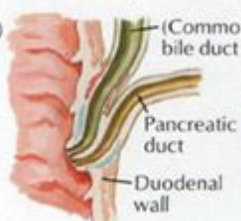


Section, level C

Variations in union of bile and pancreatic ducts



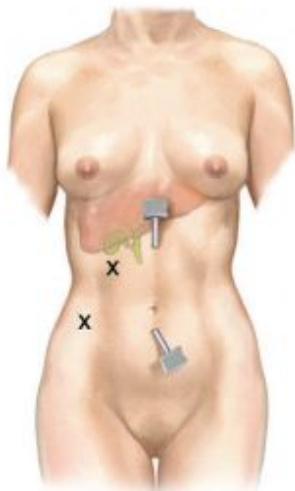
Short common channel



No common channel



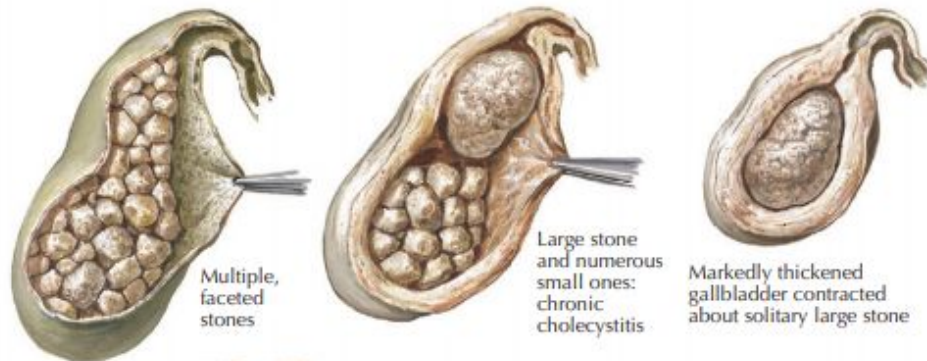
Long common channel



Laparoscopic port placement for bile duct exploration



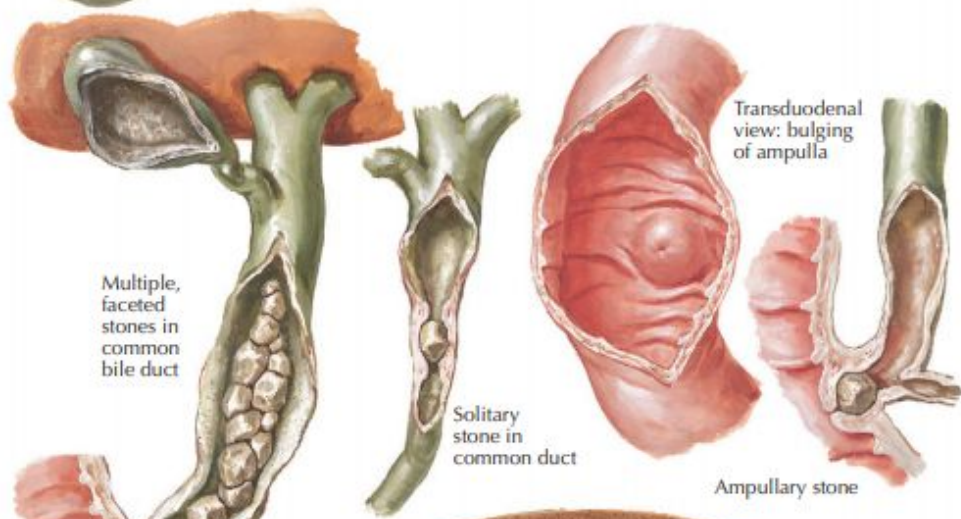
T-tube cholangiogram shows retained stone in common duct



Multiple, faceted stones

Large stone and numerous small ones: chronic cholecystitis

Markedly thickened gallbladder contracted about solitary large stone



Multiple, faceted stones in common bile duct

Solitary stone in common duct

Transduodenal view: bulging of ampulla

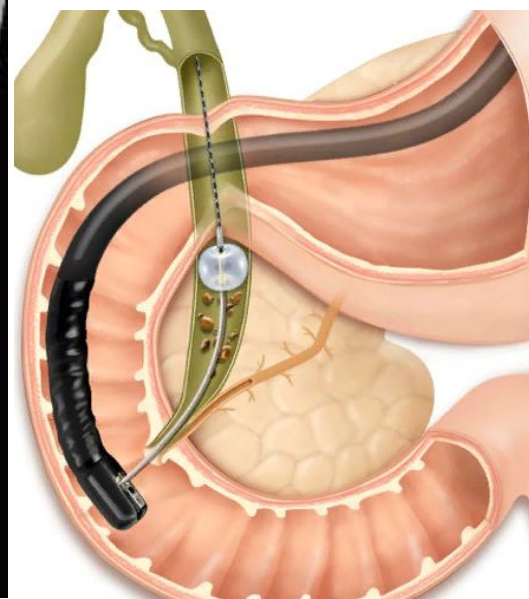
Ampullary stone

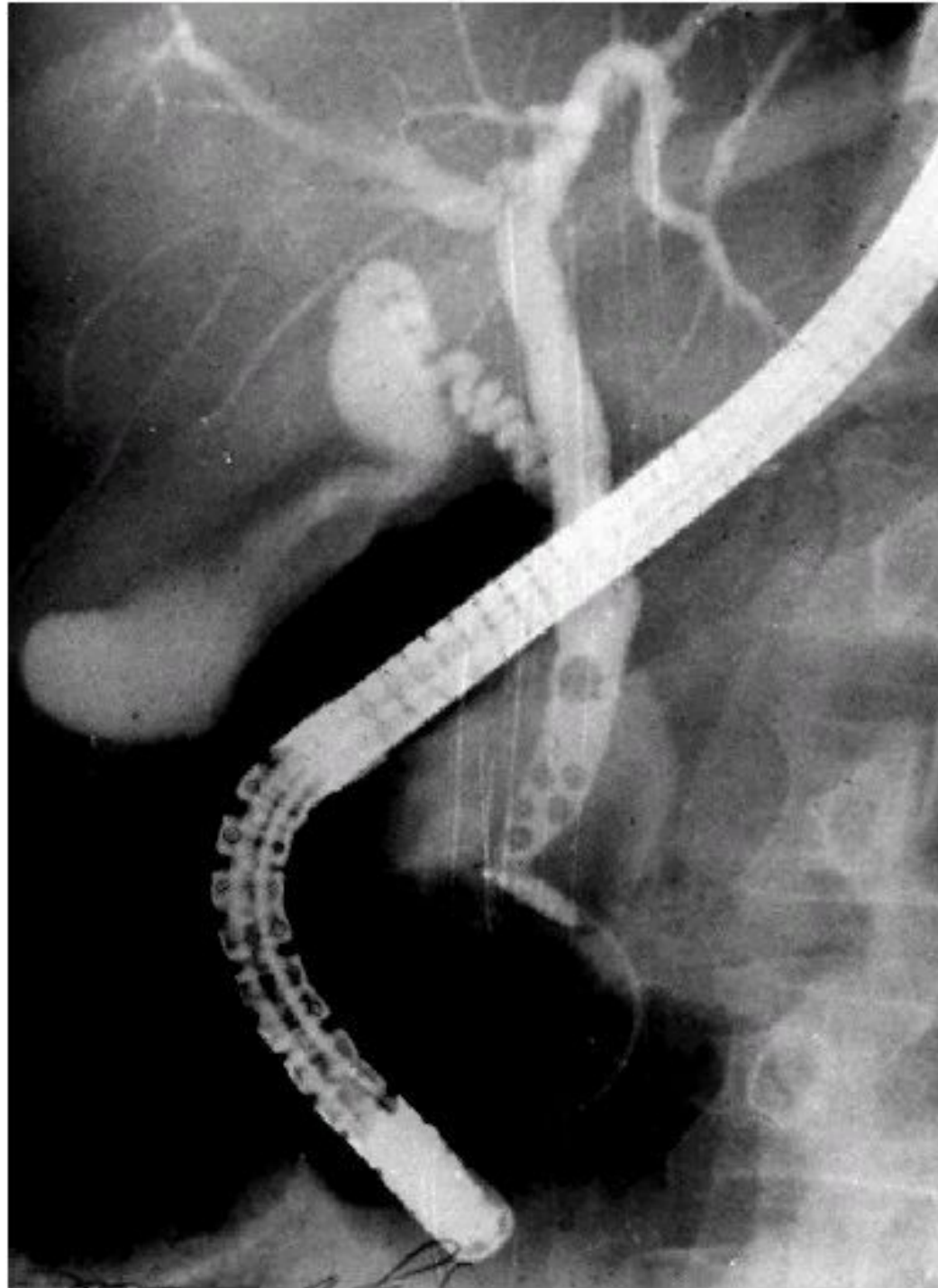


Intrahepatic stones

F. Netter M.D.
C. Machado M.D.
K. Merzsin







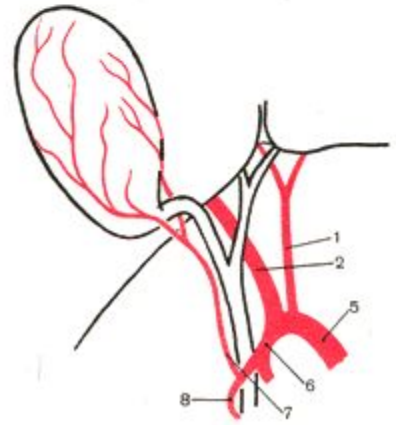
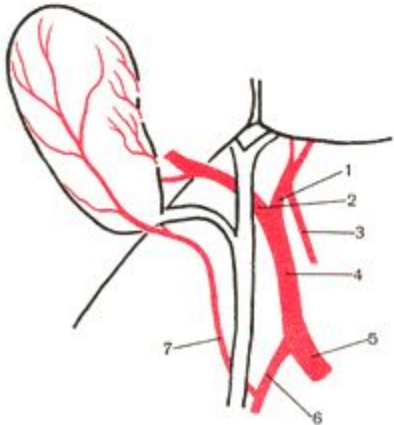
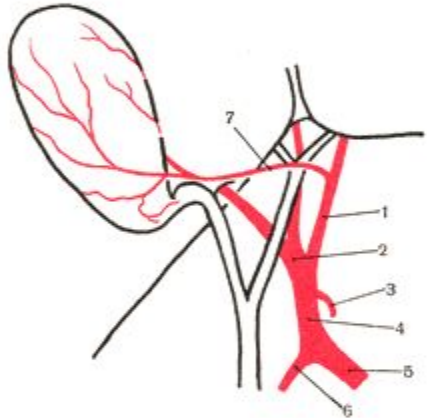
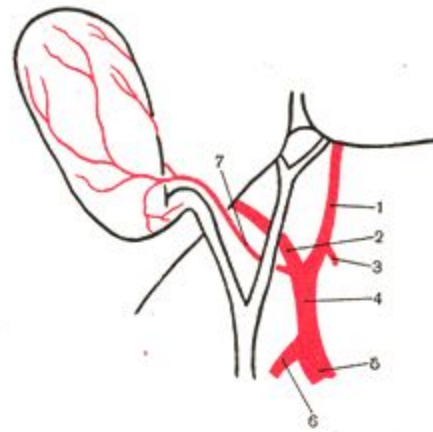
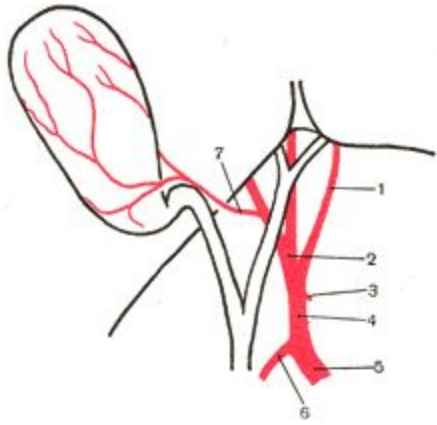
Видео от ХПП, ЭПСТ,

Литоэкстракция.

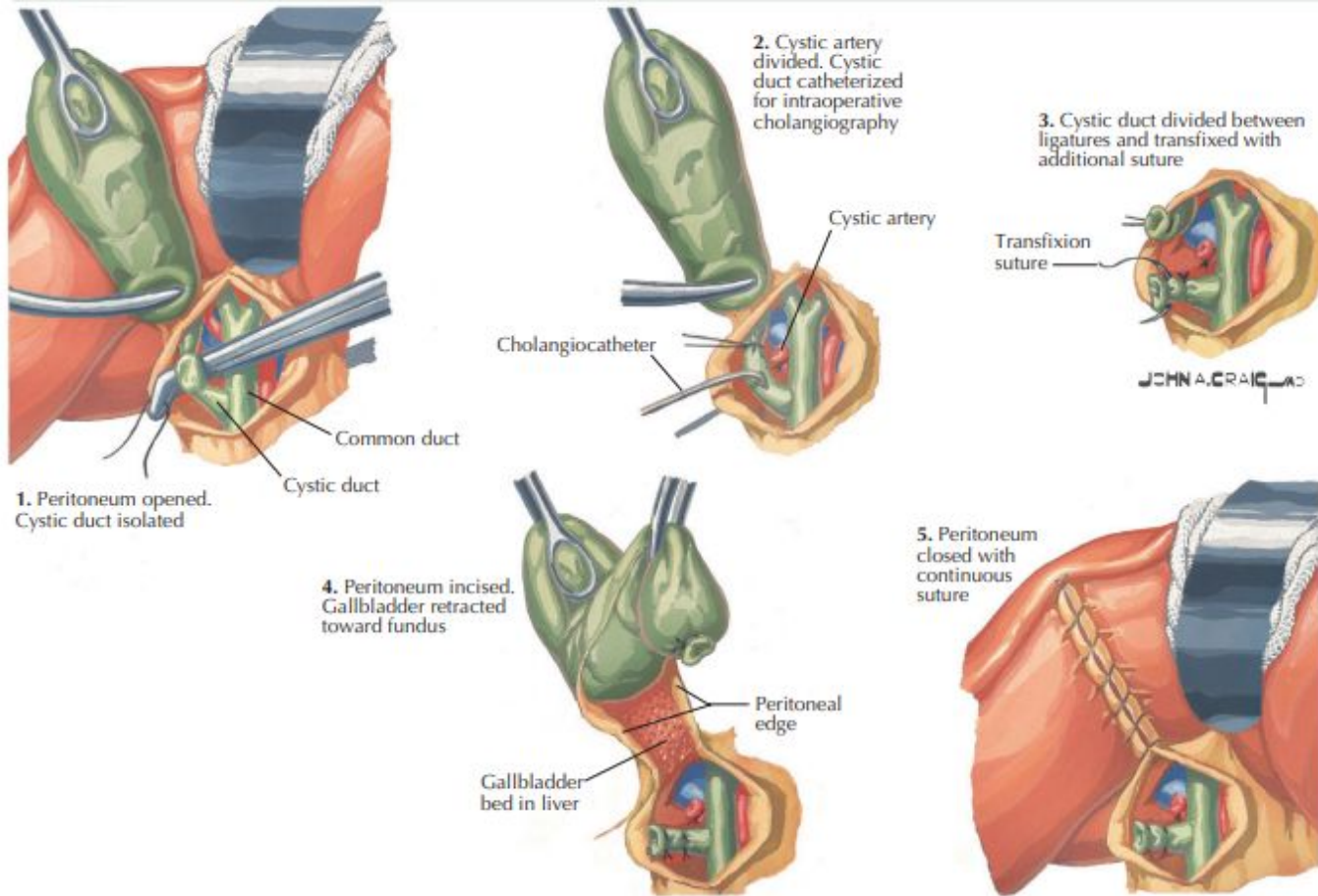
02:10 и далее на быстрой
промотке

- <https://www.youtube.com/watch?v=x9OceQhcg-l>

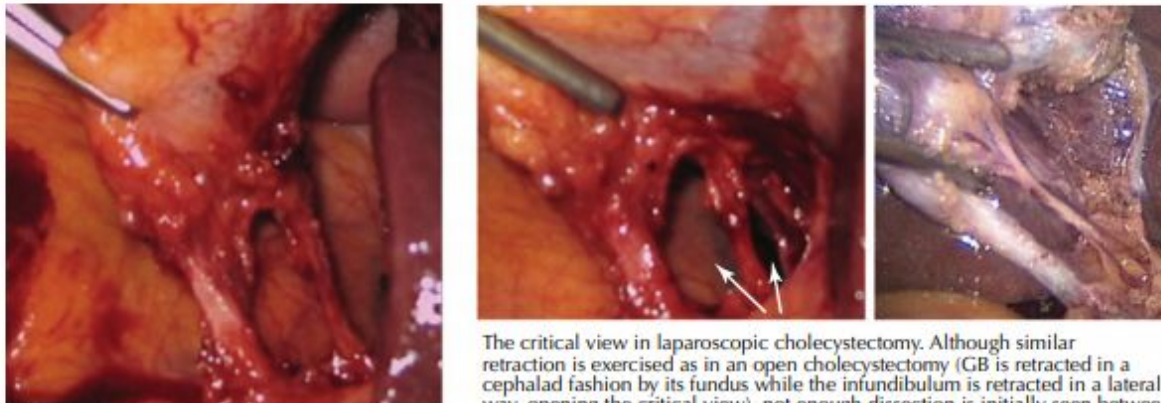




Cholecystectomy



Critical view in open and laparoscopic cholecystectomy



ЛХЭ

<http://pie.med.utoronto.ca/TVASurg/project/standardlapchole/>