

Perm State medical University

Body Worlds



2021

Ivanova P.A.
Medical faculty
104 group
Scientific adviser:
Maslova S.M.

Perm

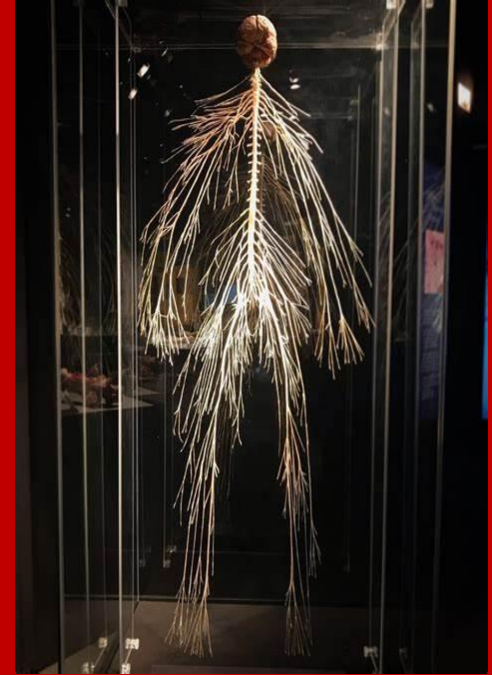
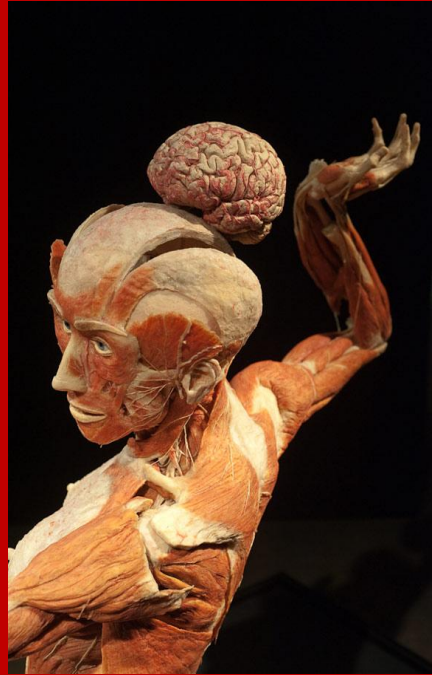
Contents



- What is Body Worlds?
- What does Body Worlds show?
- What is the purpose of the exhibition?
- What is Plastination?
- Where did the specimens on display come from?

What is Body Worlds?

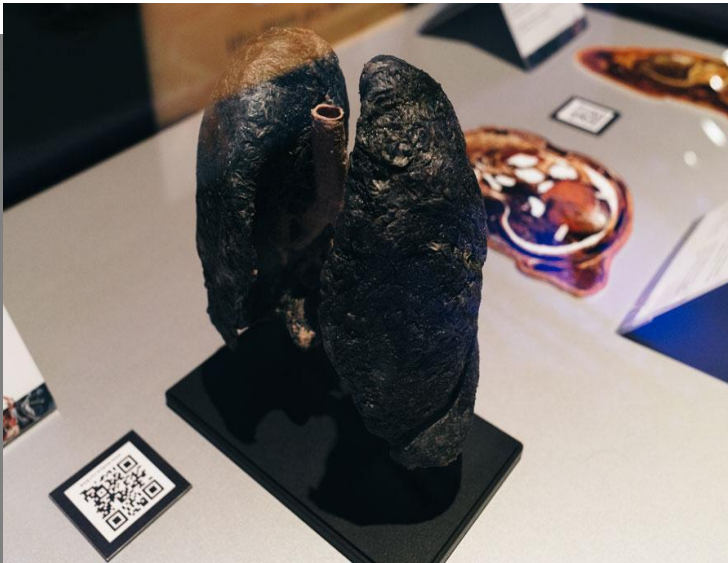
Body Worlds - the original exhibition, is the first exhibition of its kind to inform the visitor about anatomy, physiology and health by viewing real human bodies preserved through Plastination, the preservation process invented by Dr. Gunther von Hagens in 1977.



What does Body Worlds show?

Each exhibition contains real human specimens, including whole-body plastinates, as well as individual organs, organ configurations and translucent body slices. The spectacular plastinates in the exhibition take the visitor on an exciting journey of discovery under the skin. It provides a comprehensive insight into the anatomy and physiology of the human body.

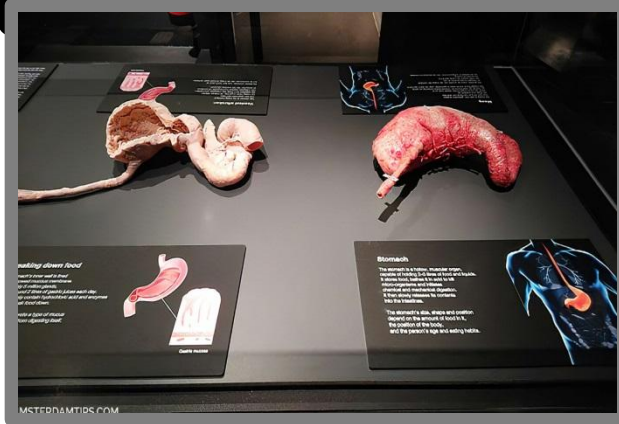




In addition to organ functions, common diseases are described in an easily understood manner by comparing healthy and affected organs. They show the long-term impact of diseases and addictions, such as tobacco or alcohol consumption, and demonstrate the mechanics of artificial knee and hip joints.



What is the purpose of the exhibition?



BODY WORLDS aims to educate the public about the inner workings of the human body and shows the effects of poor health, good health and lifestyle choices. It is also presented in the hopes that it will stimulate



What is Plastination?

Plastination - is a unique process invented by Dr. Gunther von Hagens in 1977 to preserve specimens for medical education. The process replaces bodily fluids and soluble fat in specimens with fluid plastics, that harden after vacuum-forced impregnation. After the bodies are fixed into lifelike poses, they are hardened with gas, heat or light. The plastinates show how our bodies respond internally to movements in everyday life, as well as during athletic activities.

.....

Where did the specimens on display come from?

The BODY WORLDS exhibitions rely on the generosity of body donors; individuals who bequeathed that, upon their death, their bodies could be used for educational purposes in the exhibition. All the whole-body plastinates and the majority of the specimens are from these body donors; a few organs and specific specimens, that show unusual conditions, come from old anatomical collections and morphological institutes.





2021

THANKS