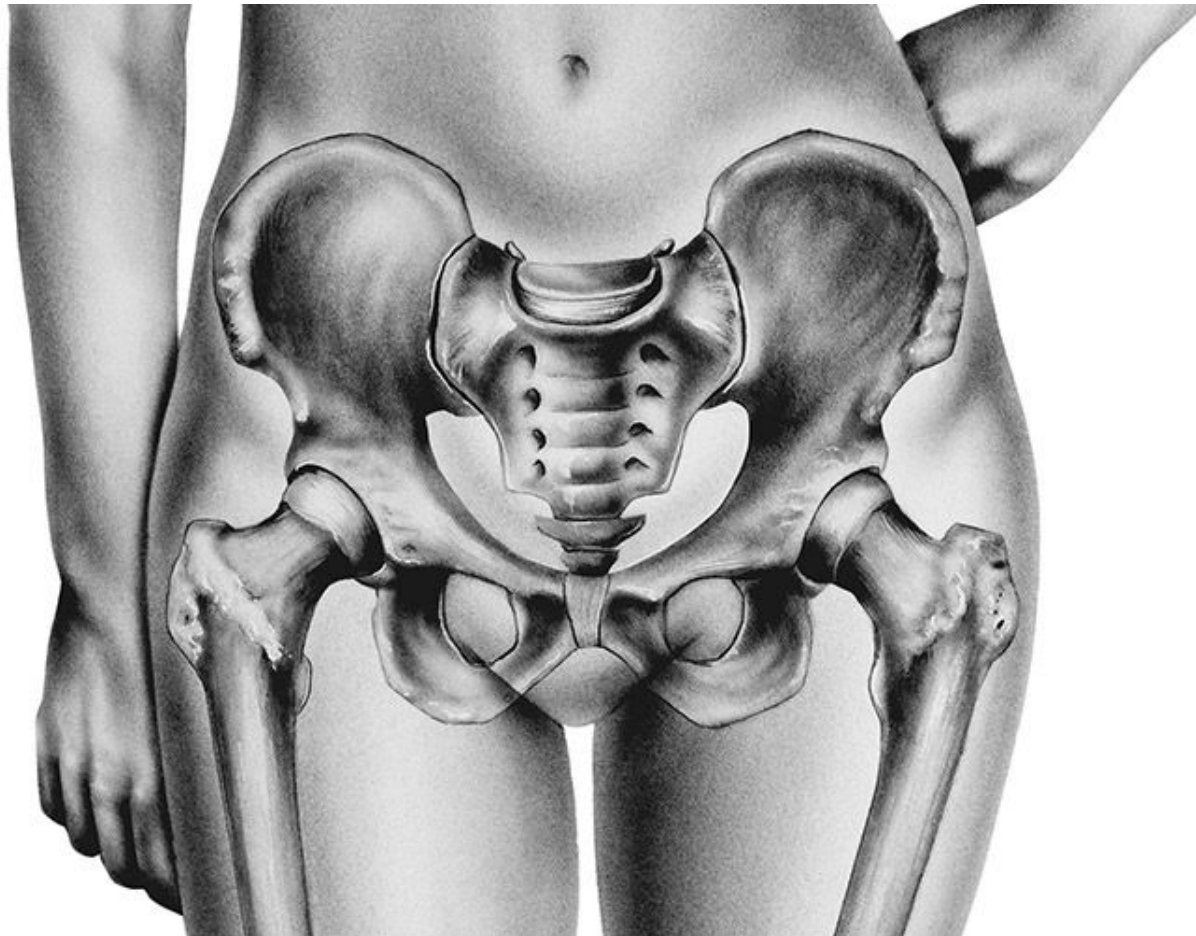
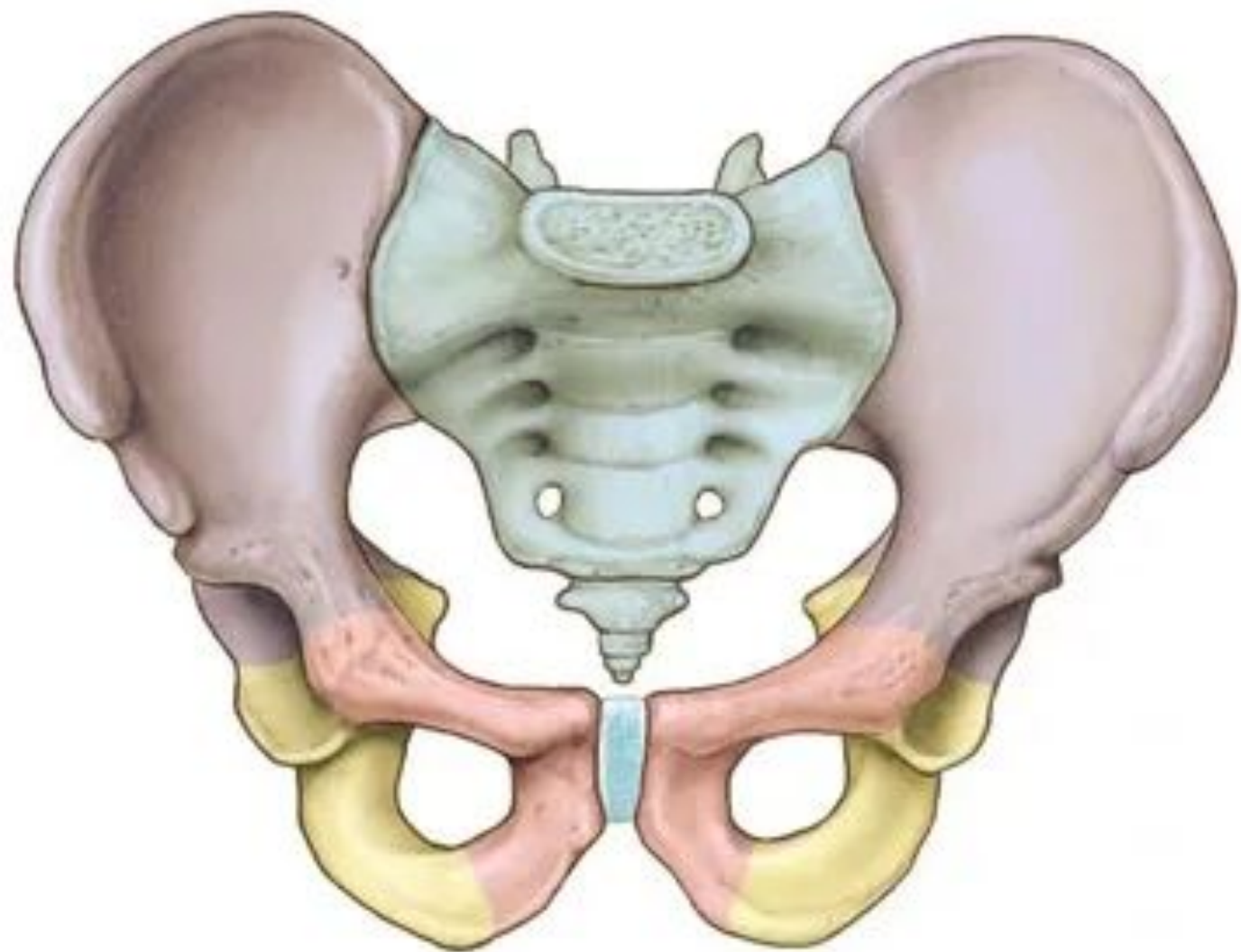


АНАТОМИЯ ОРГАНОВ ЖЕНСКОГО МАЛОГО ТАЗА



*Аничкова Елизавета
Владимировна
студентка 5 курса МШ «МБ»
Сеченовский университет*



Sección media (sagital)

Cresta ilíaca } Zona intermedia
 } Labio interno

Fosa ilíaca (ala del ilion)

Espina ilíaca anterosuperior

Línea arqueada

Espina ilíaca anteroinferior

Eminencia iliopúbica

Conducto obturador

Rama superior del pubis

Pecten del pubis (línea pectínea)

Tubérculo del pubis

Cara de la sínfisis

Membrana obturatriz

Cuerpo de la vértebra L5

Falsa pelvis

Disco intervertebral lumbosacro (L5-S1)

Promontorio del sacro

Agujero ciático mayor

Pelvis verdadera

Espina isquiática (ciática)

Ligamento sacroespinoso

Agujero ciático menor

Ligamento sacrotuberoso

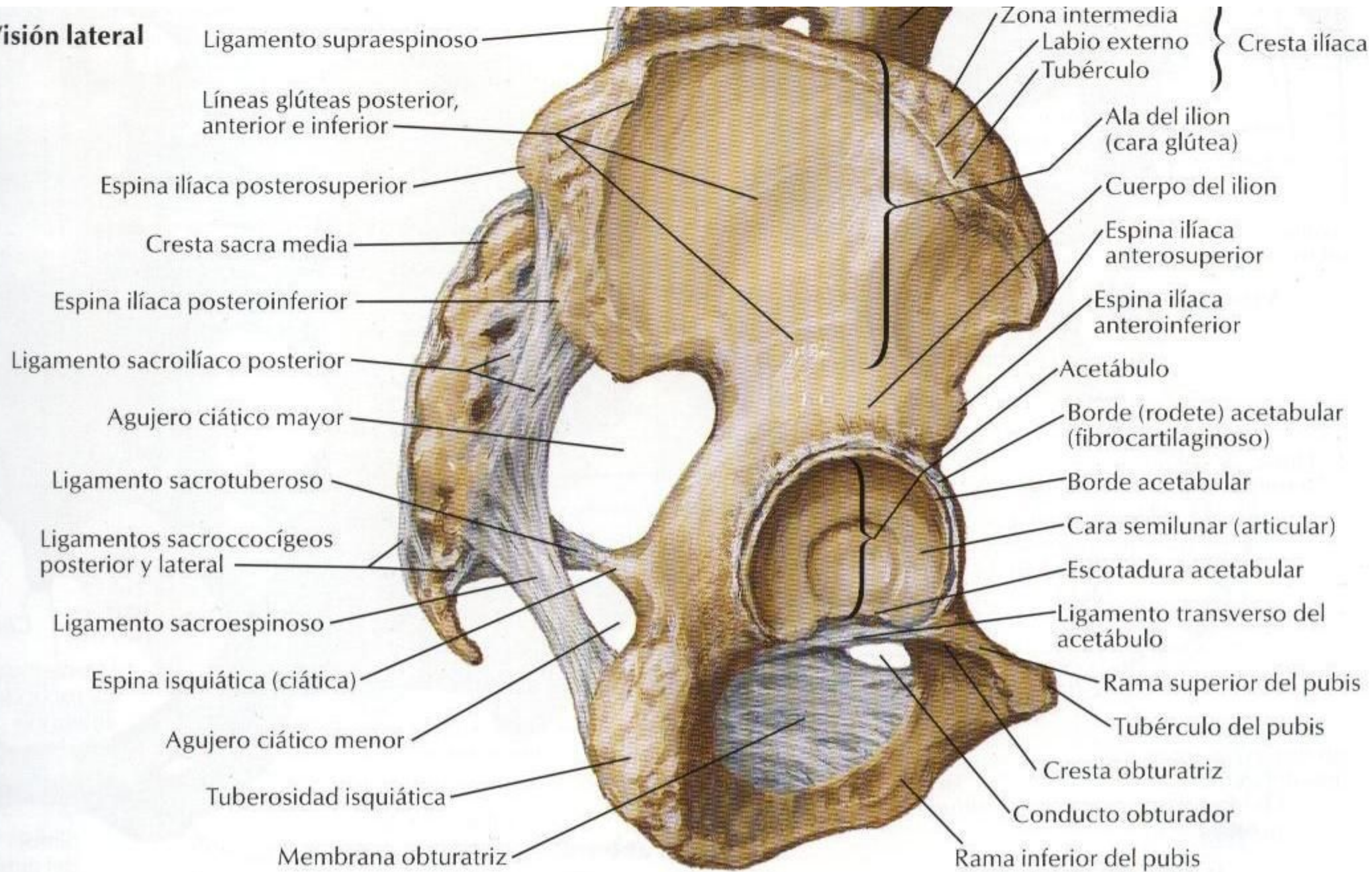
Cóccix

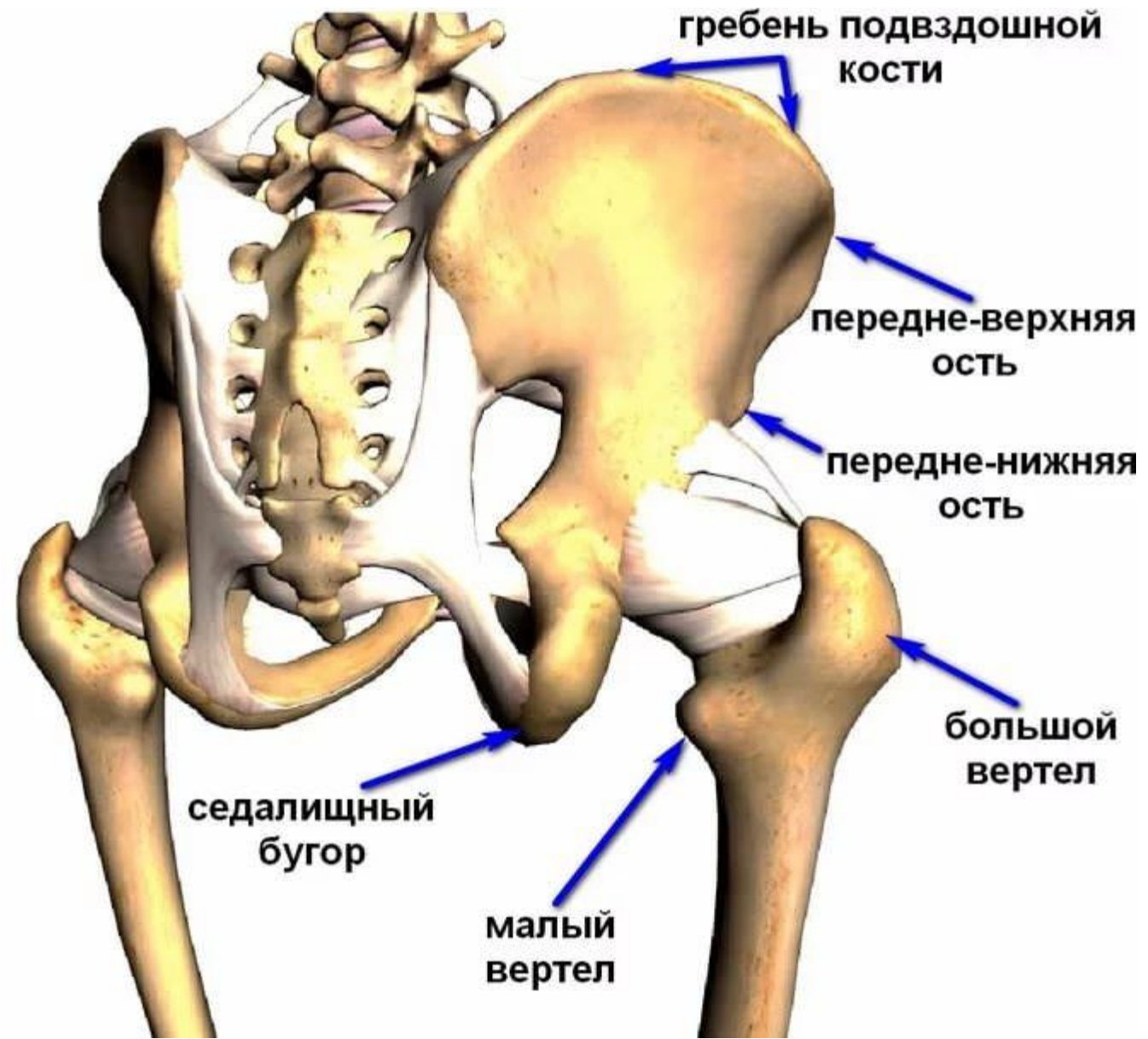
Tuberosidad isquiática

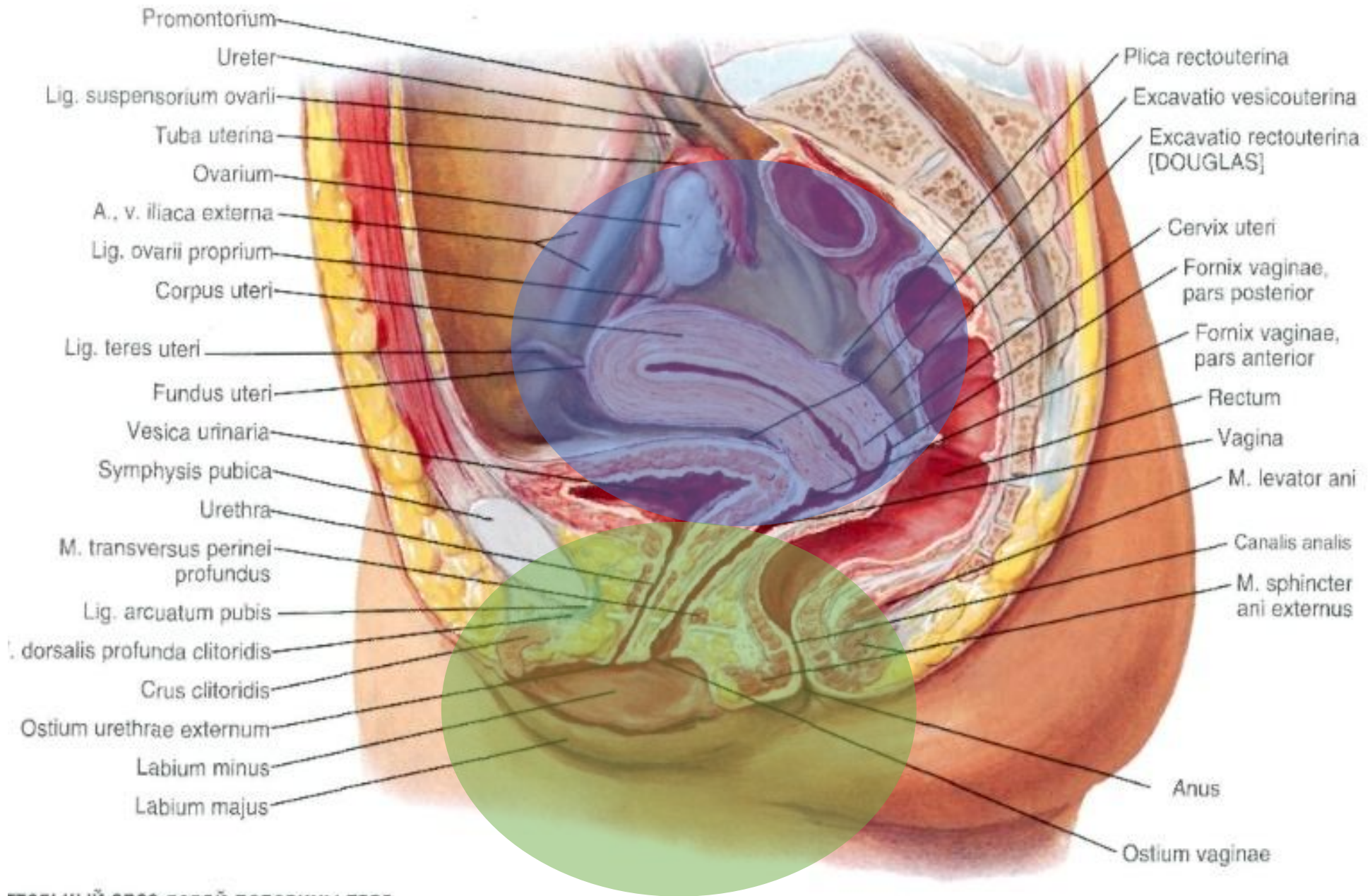
Cuerpo de la vértebra L4

F. Netter
M.D.
© IGM

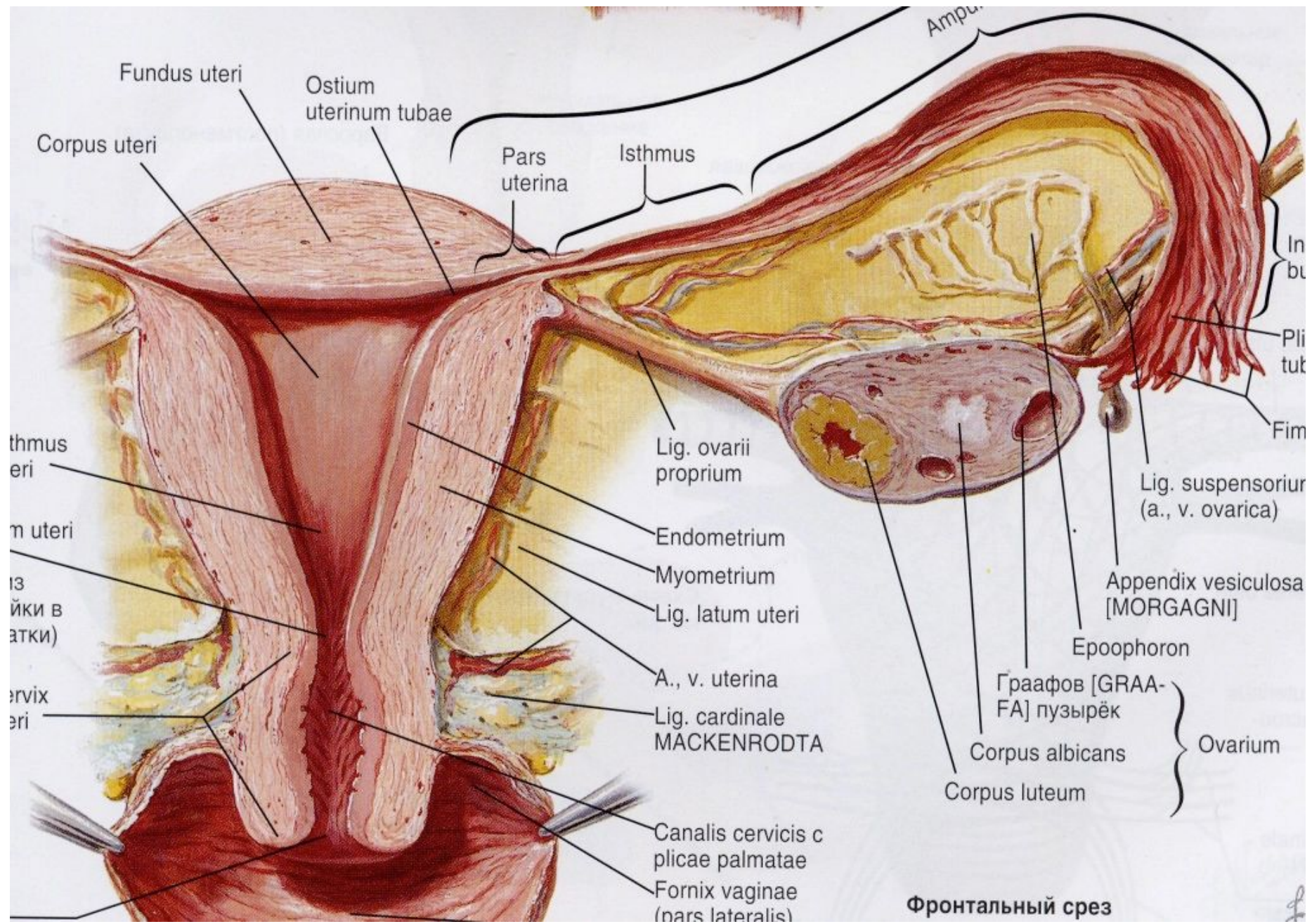
Visión lateral

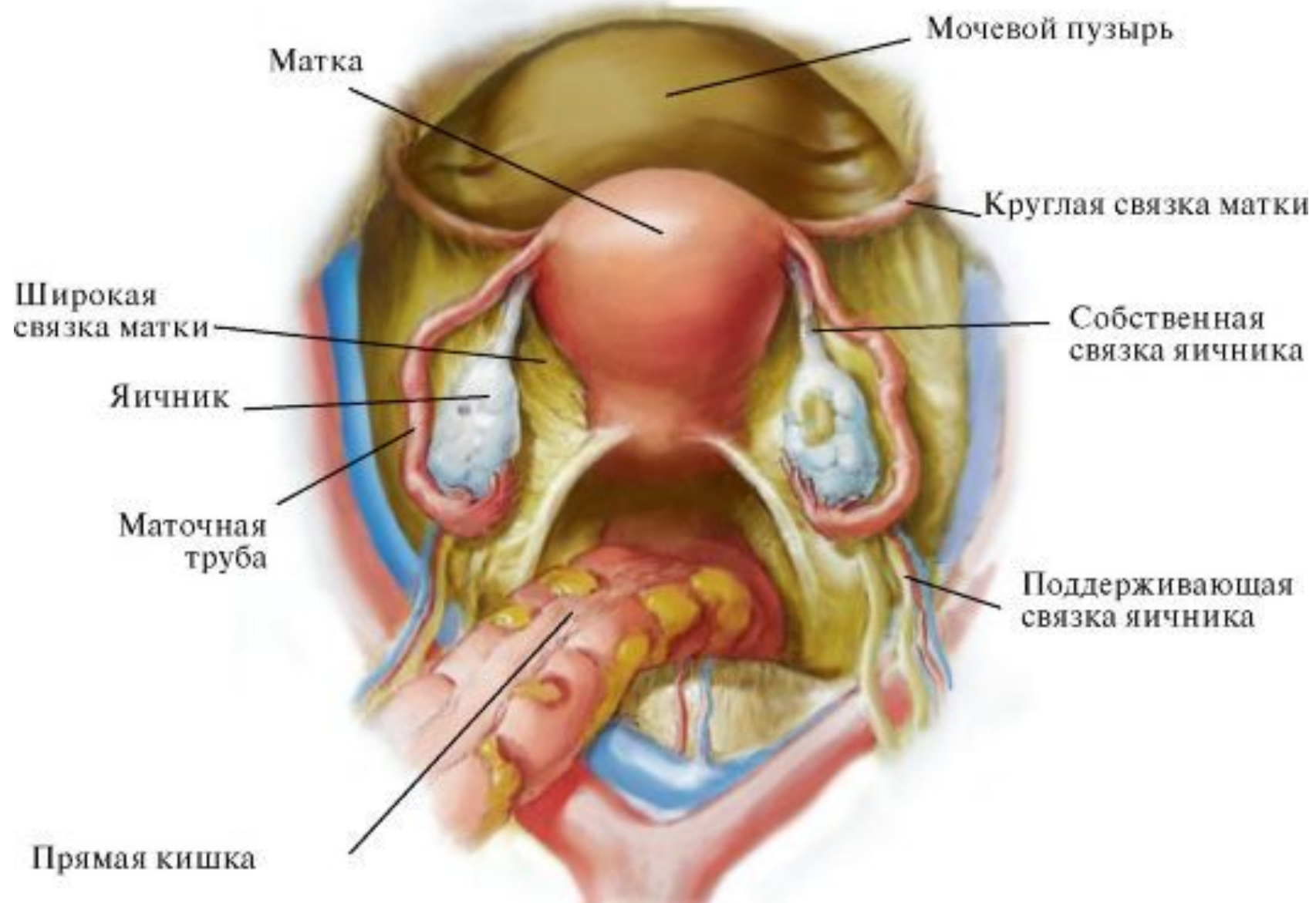


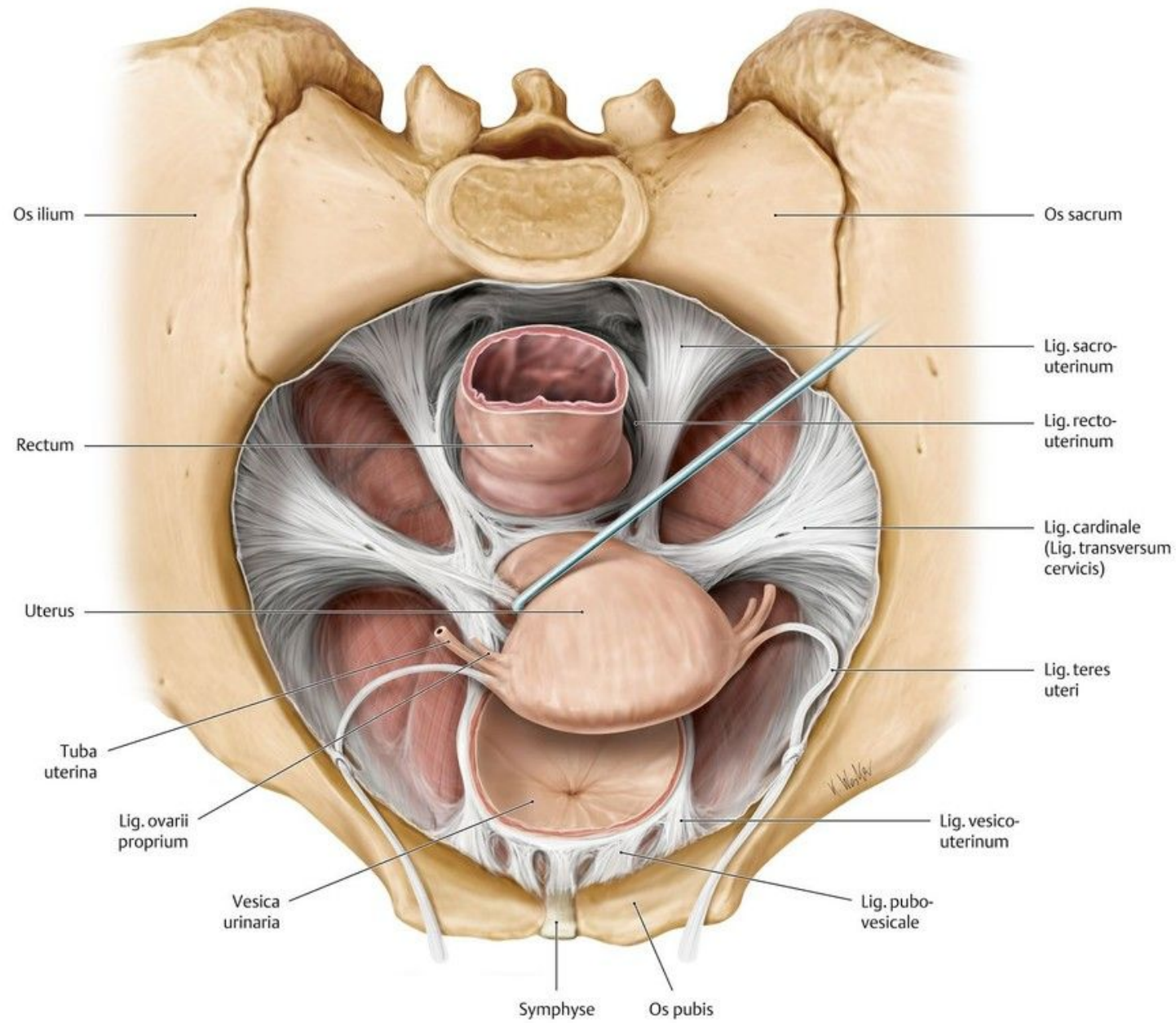


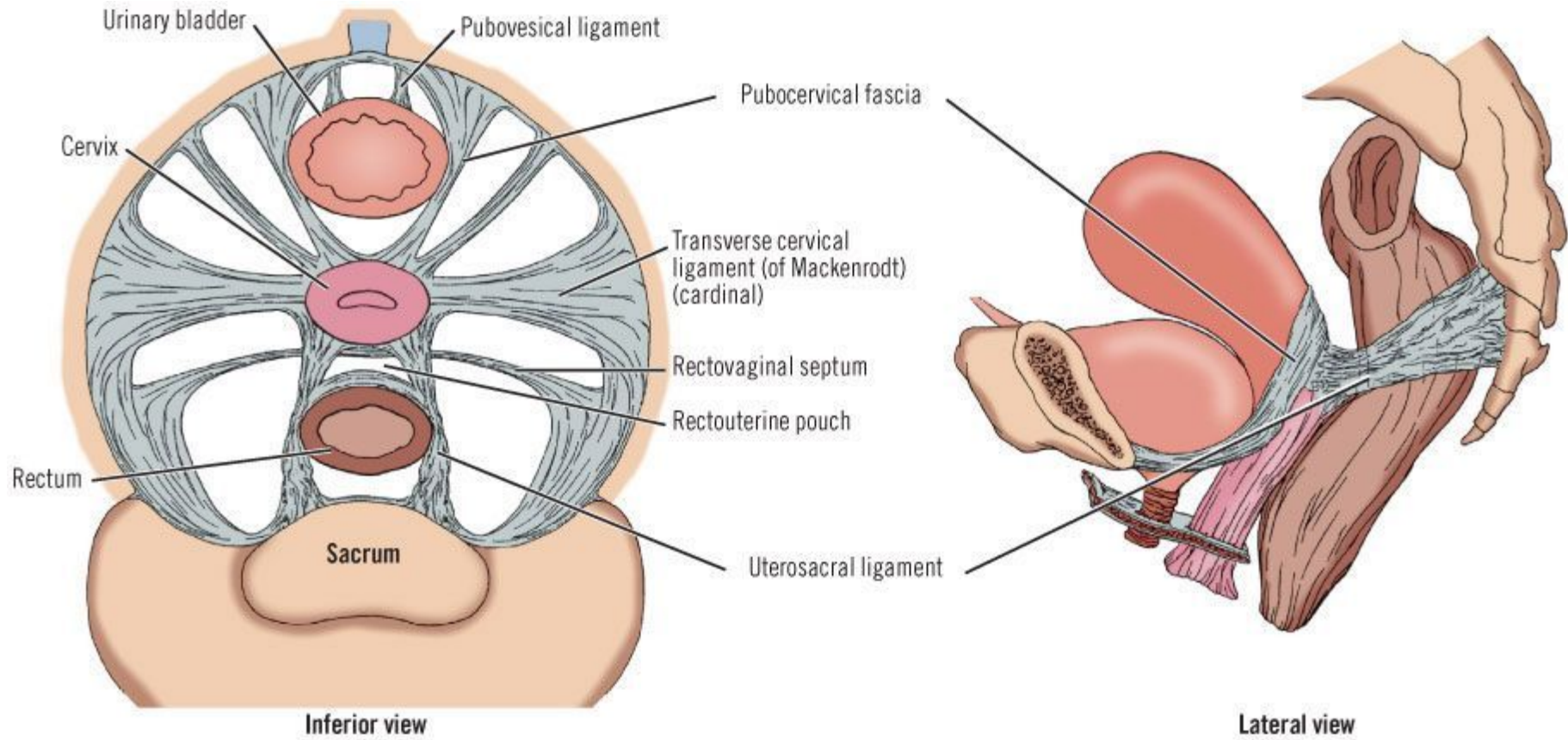


сакральная половина таза



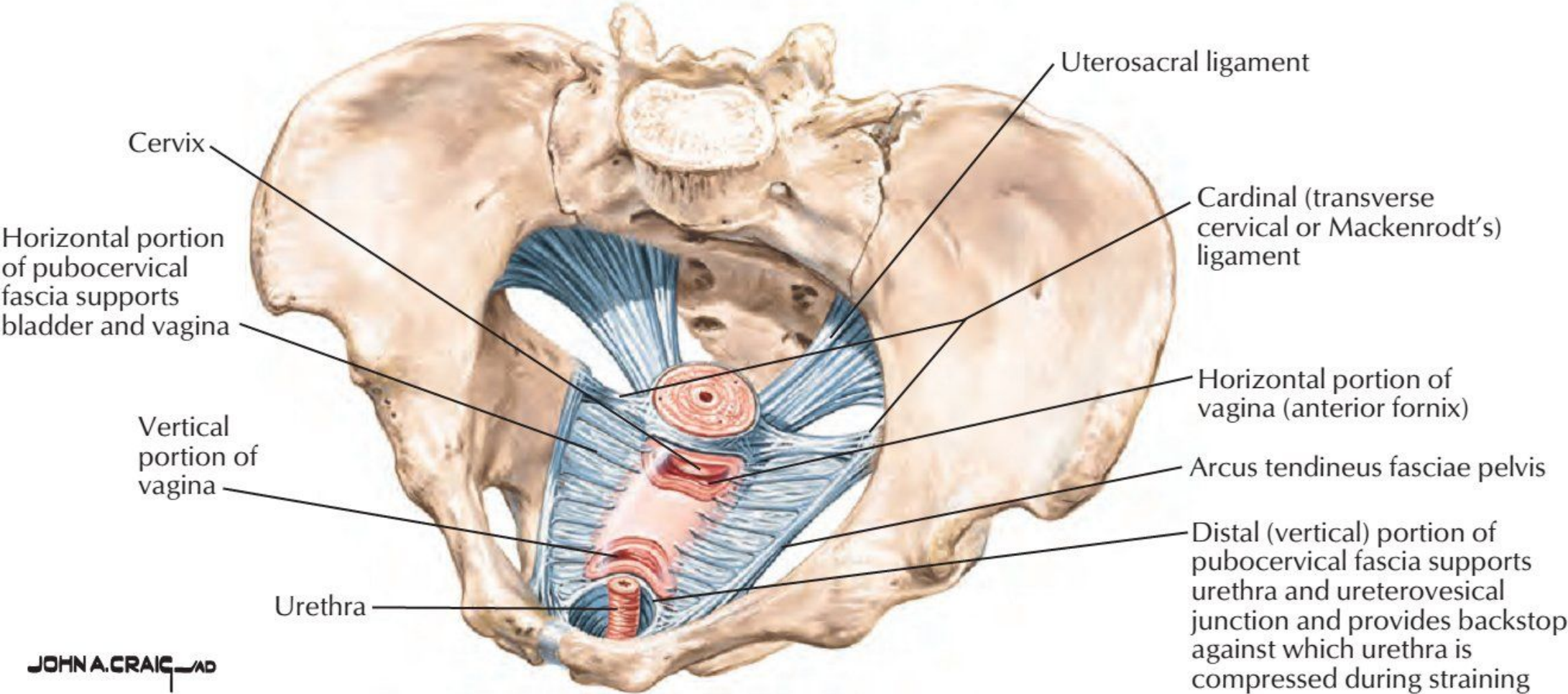




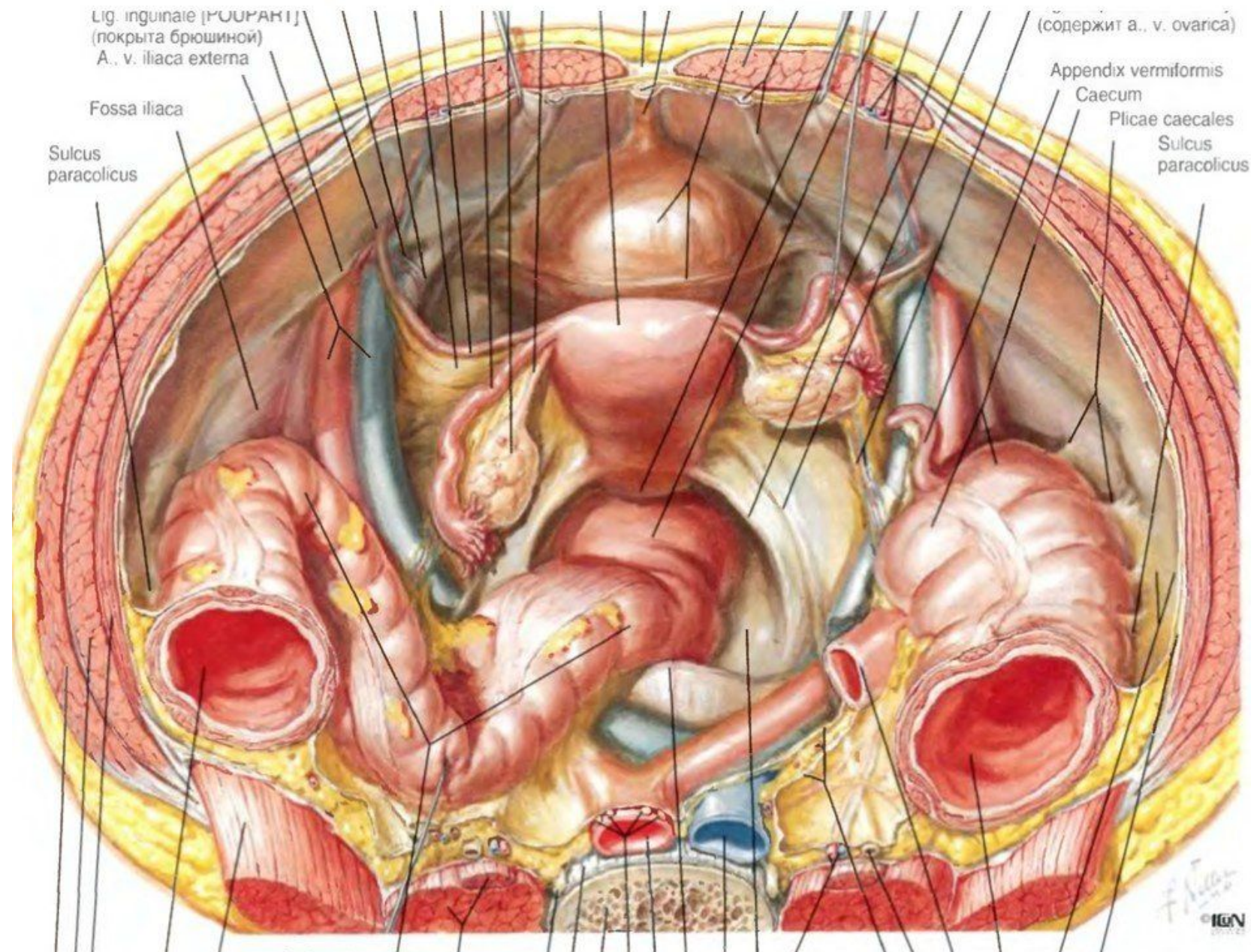


Copyright ©2006 by The McGraw-Hill Companies, Inc.
 All rights reserved.

Pelvic fascia and ligaments



JOHN A. CRAIG MD



Lig. inguinale [FOURANT]
(покрыта брюшиной)
A. v. iliaca externa

(содержит а. v. ovarica)

Fossa iliaca

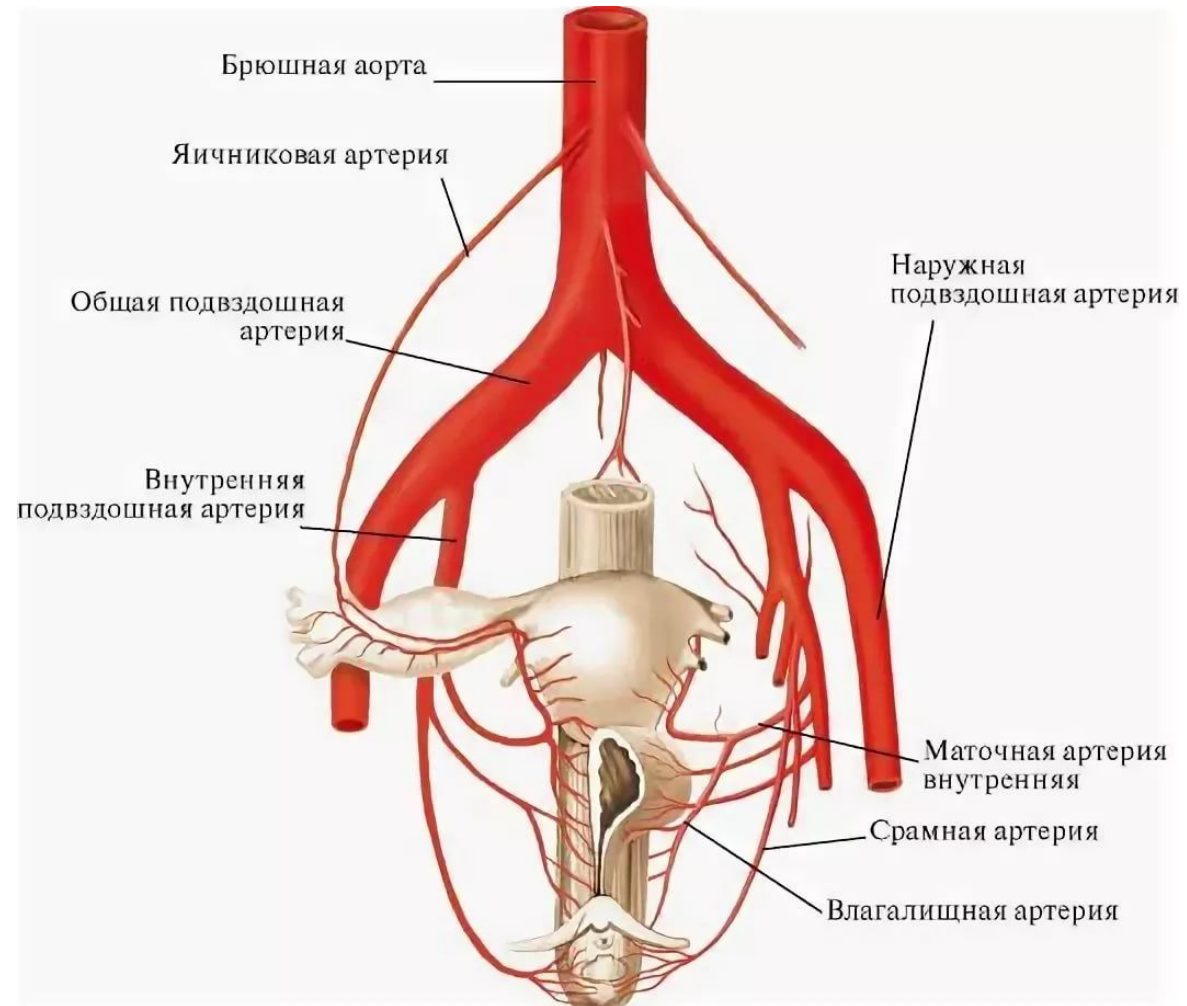
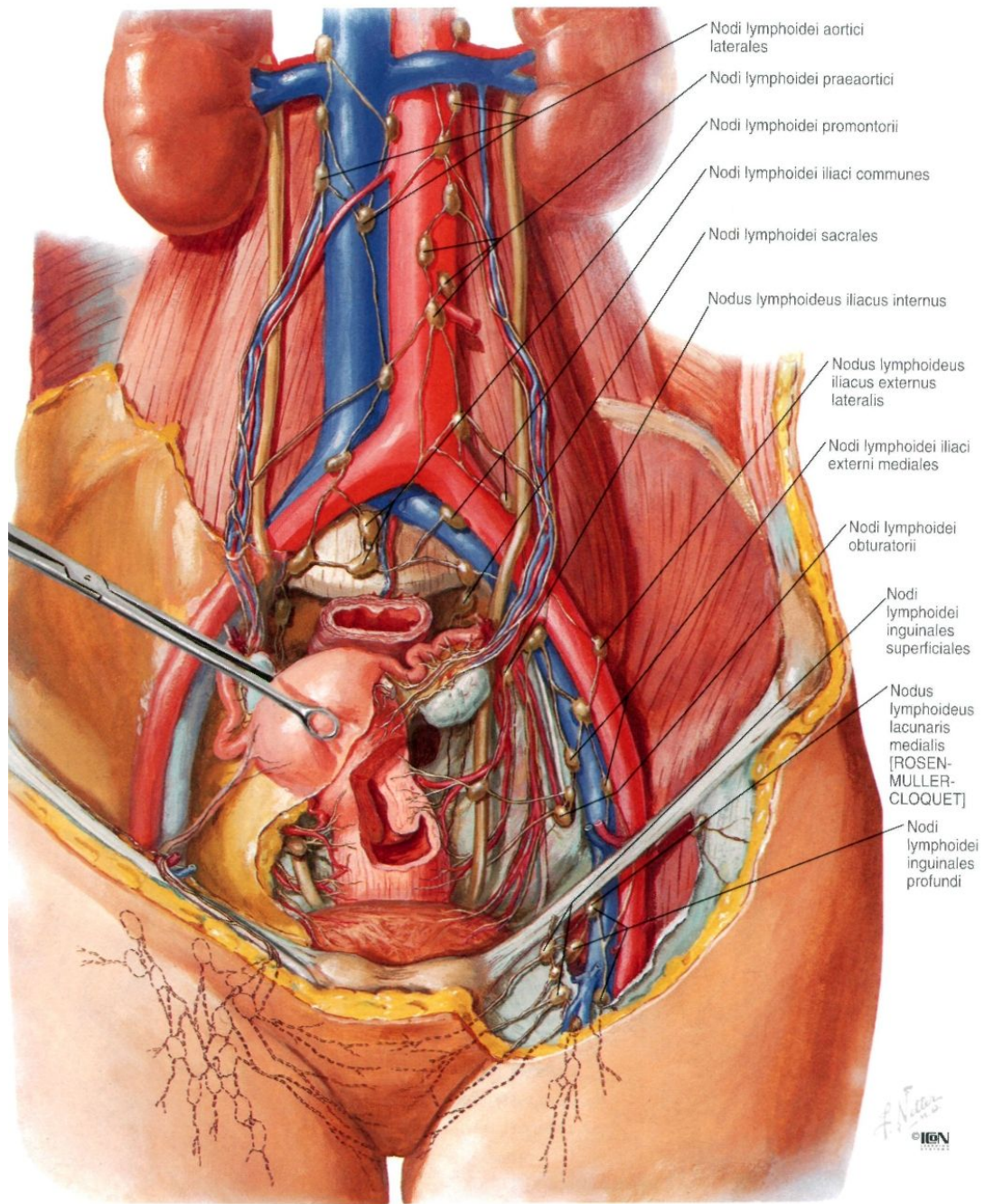
Appendix vermiformis

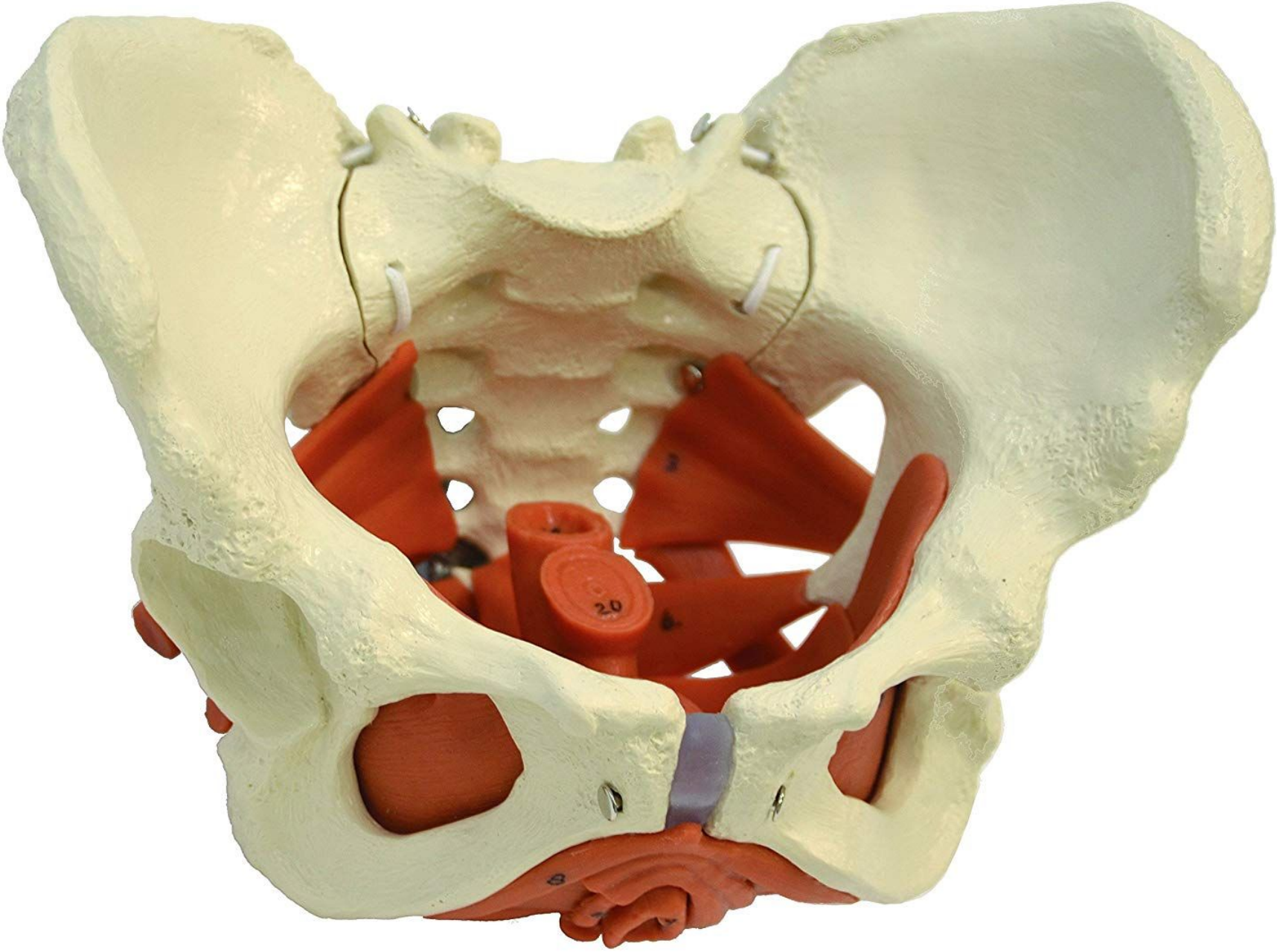
Sulcus
paracolicus

Caecum

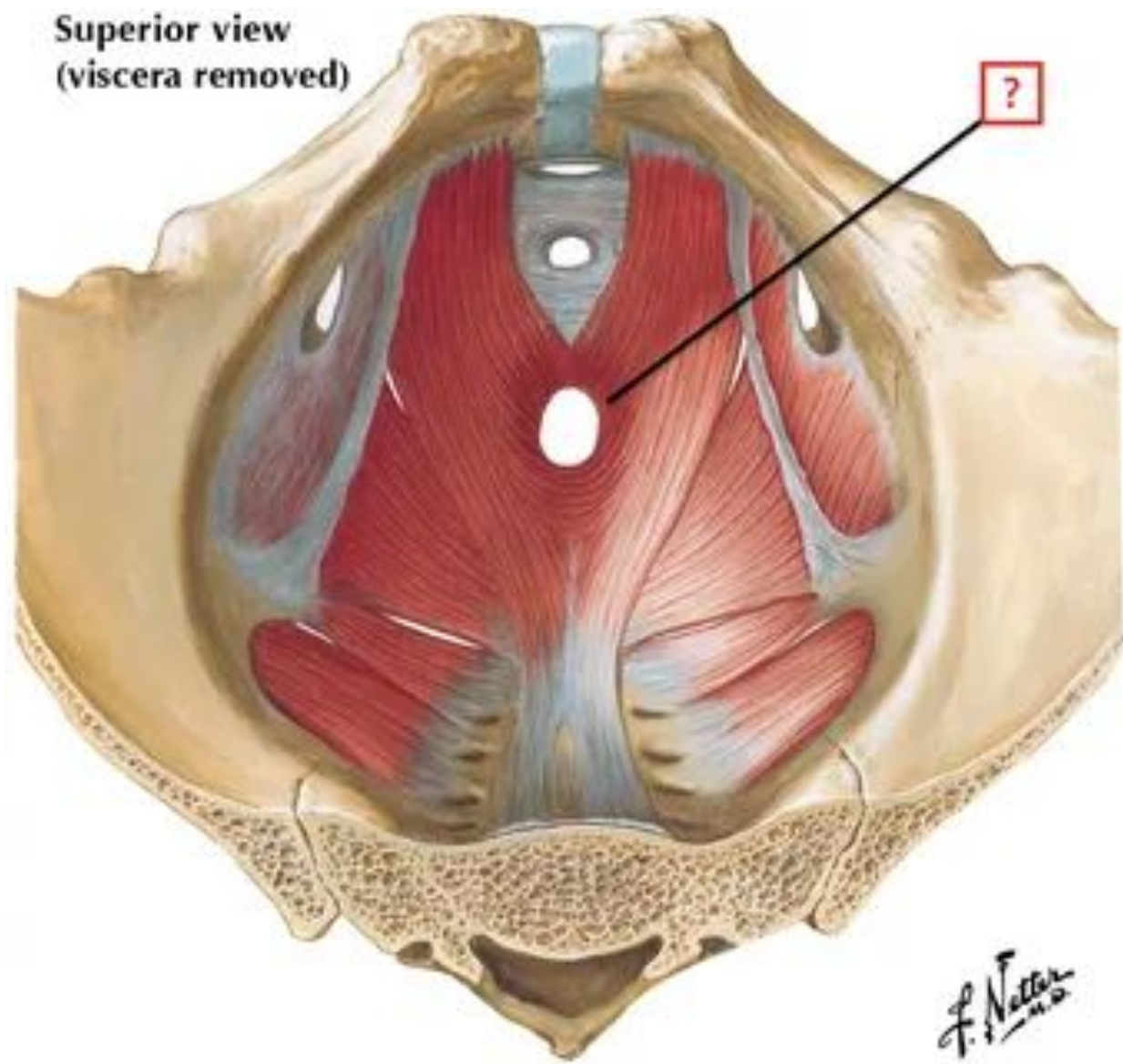
Plicae caecales

Sulcus
paracolicus

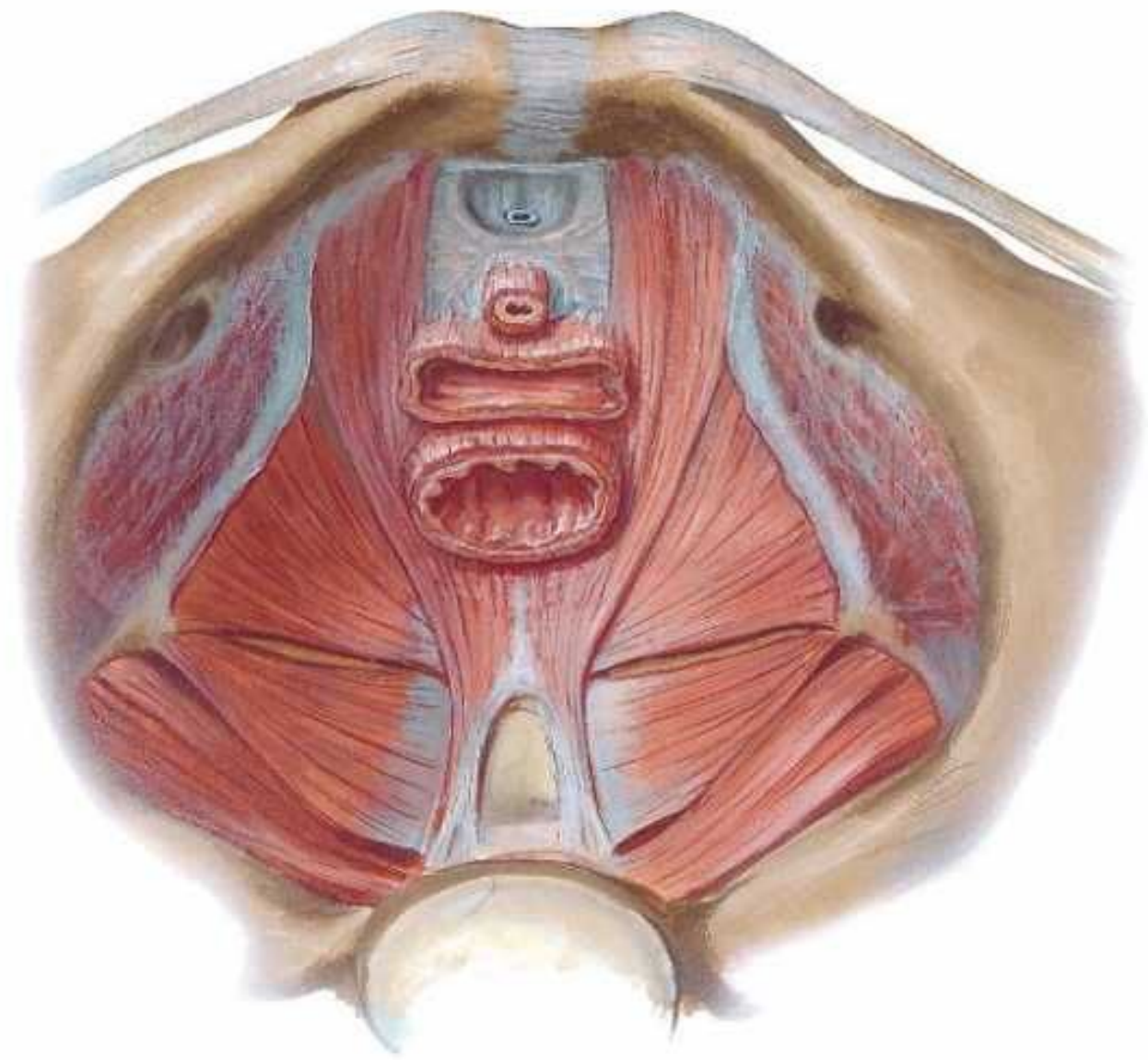




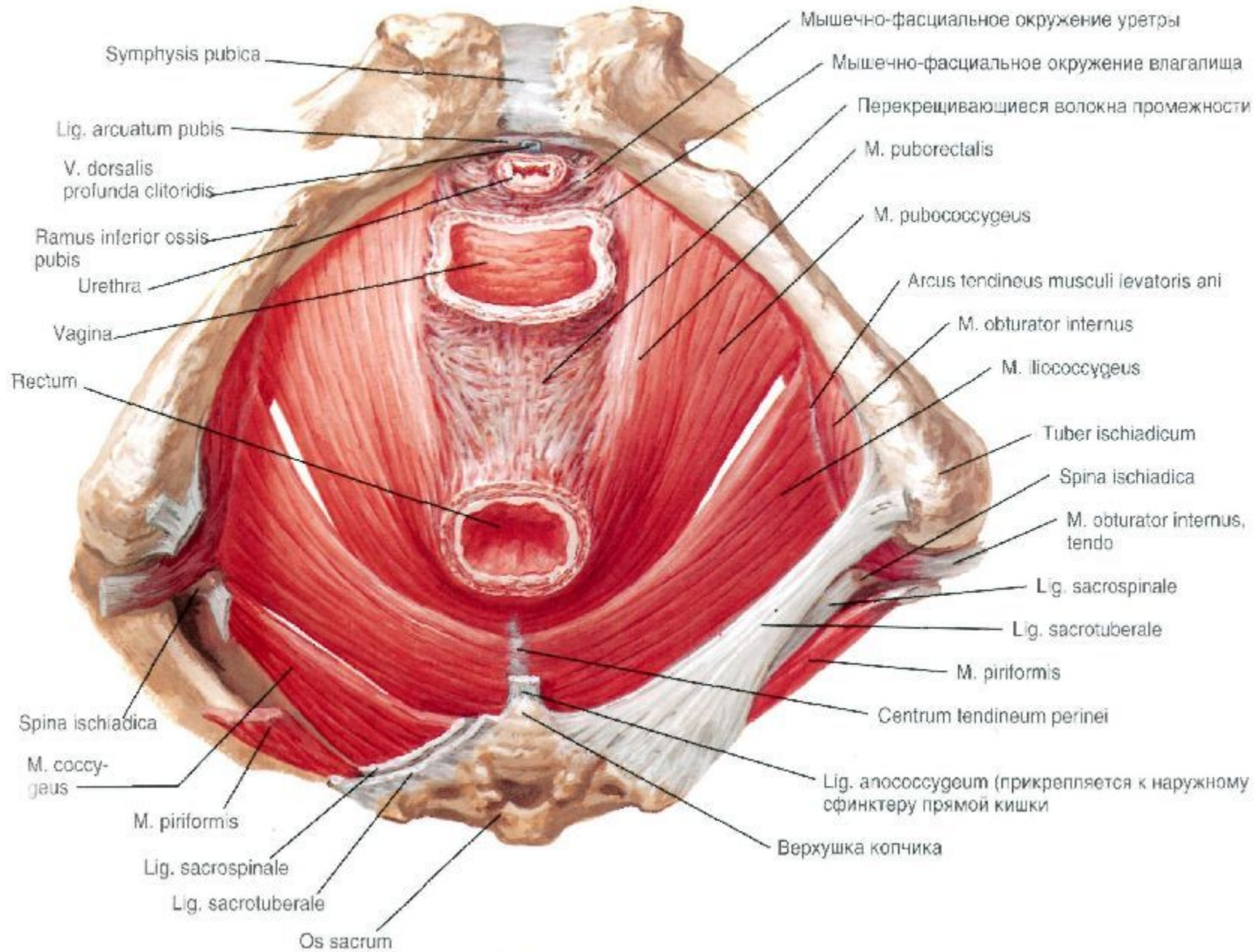
Superior view
(viscera removed)

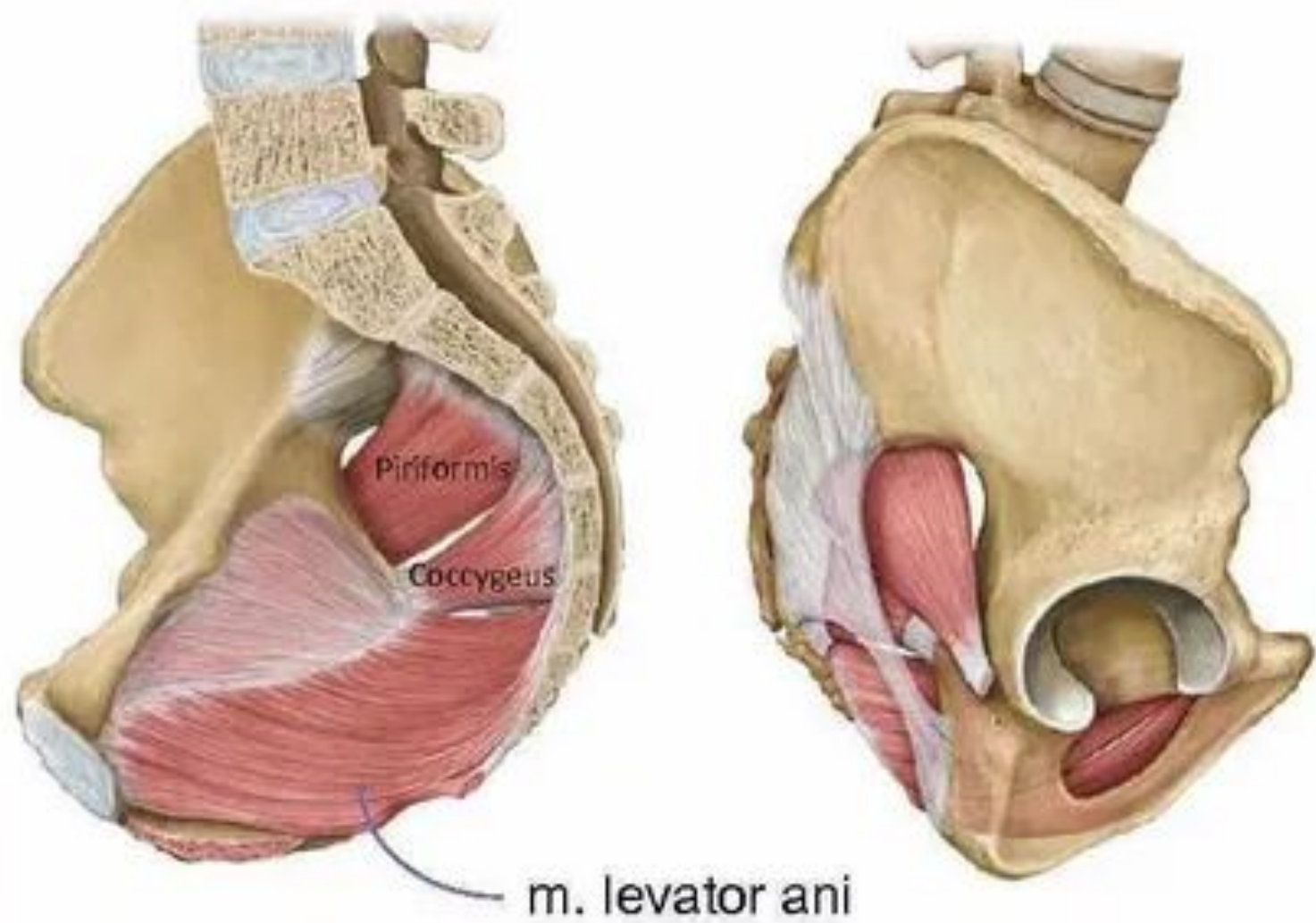


F. Netter
M.D.

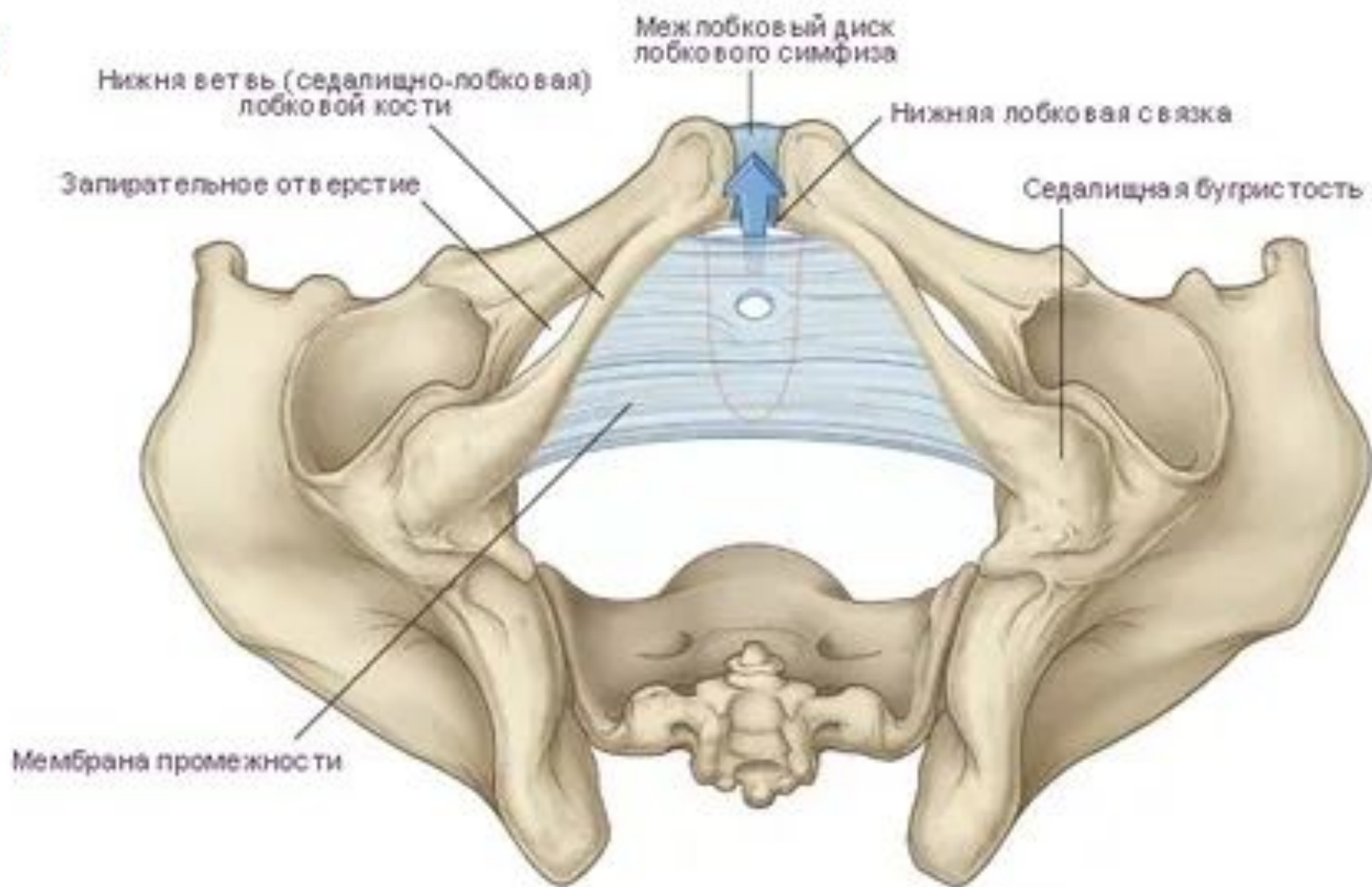


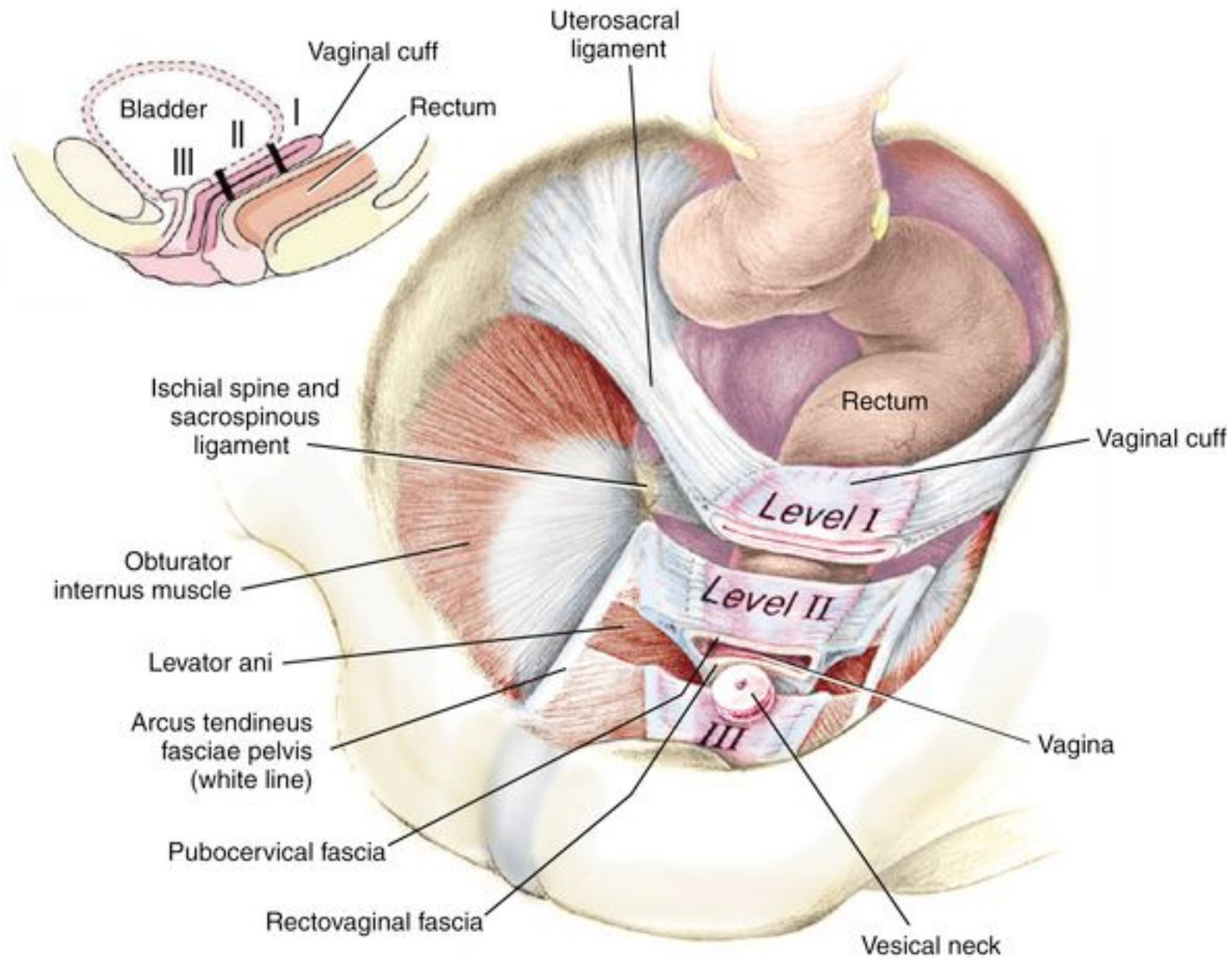
Вид снизу





A





A

