

*«Ничегошеньки нет  
в моем доме  
-только прохлада и душевный покой...»*

*Кобаяси Исса*









































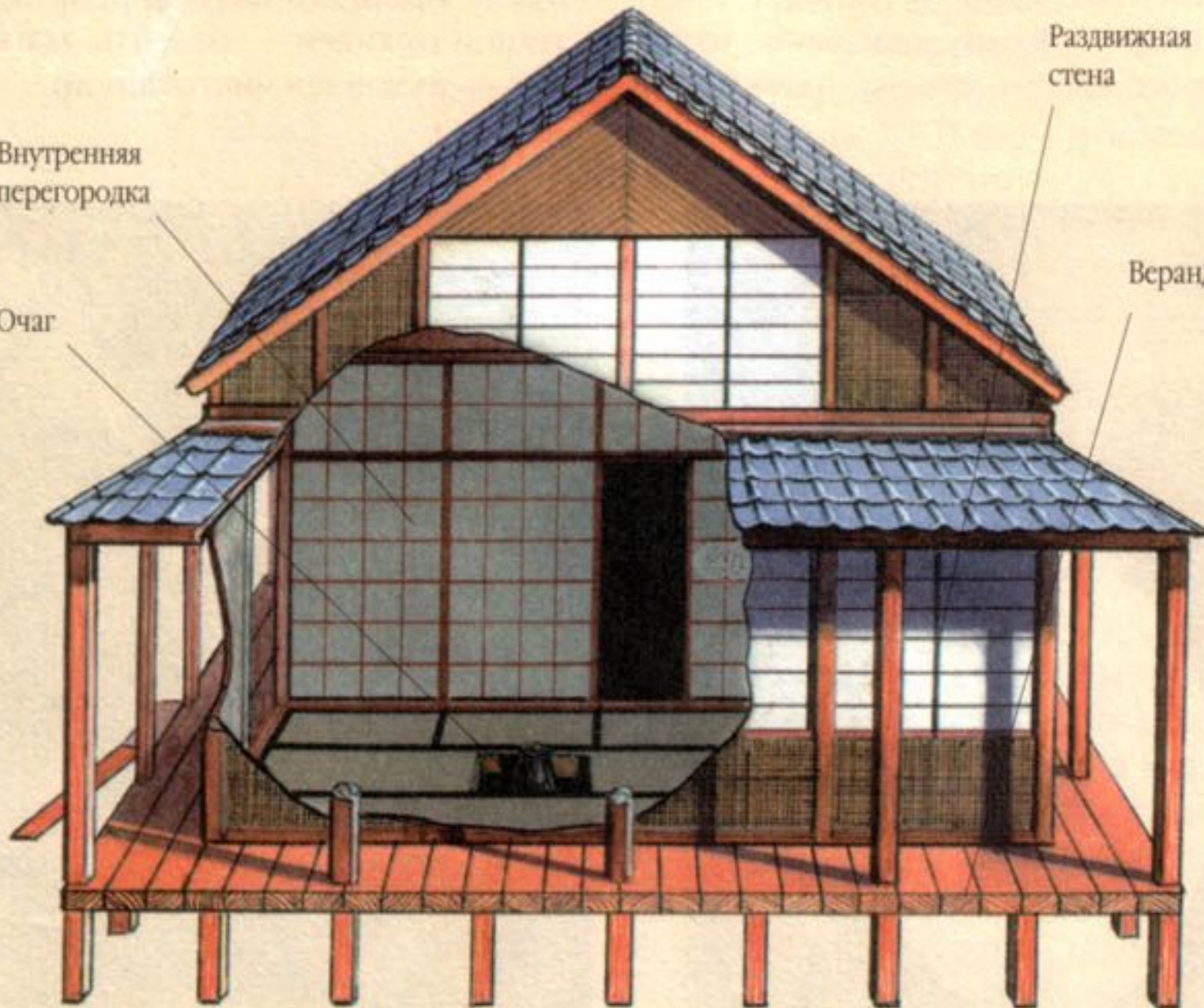


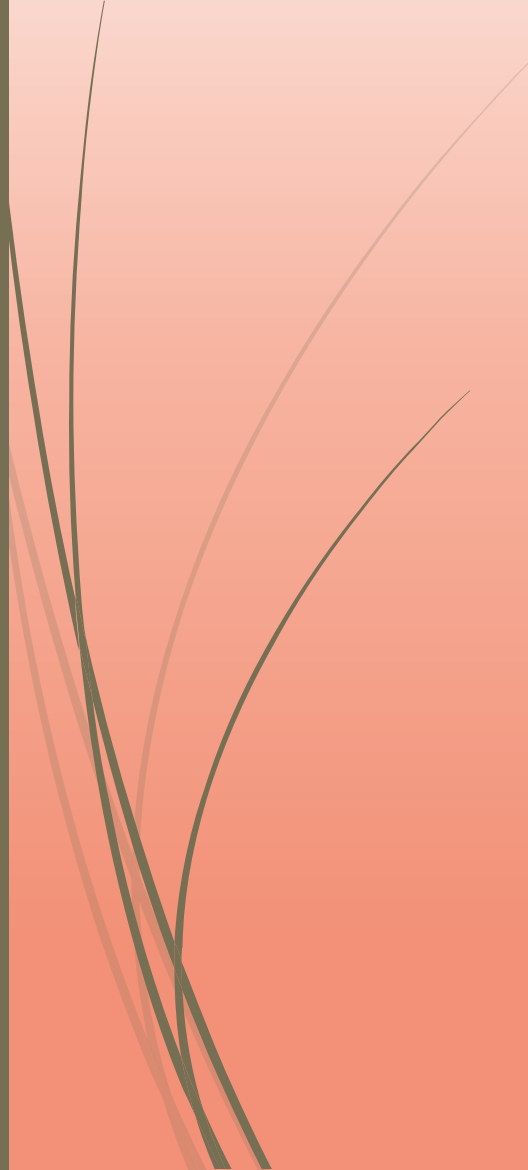
Внутренняя  
перегородка

Очаг

Раздвижная  
стена

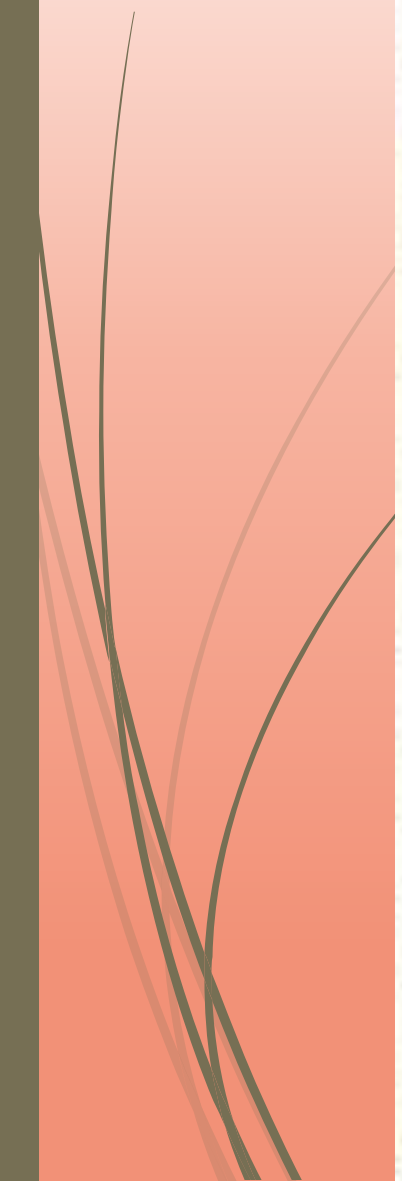
Веранда











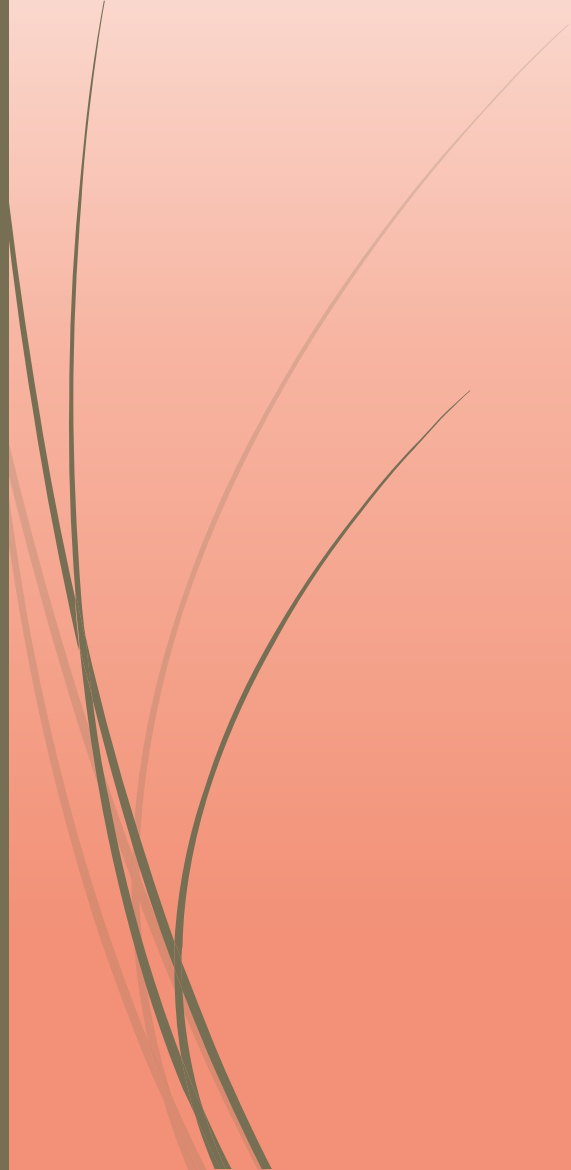


















**Le baneri** est un col amovible, apparaissant sous le kimono.

de  
ge,  
obi  
ice.

si  
e  
r

on  
ert  
it à  
obi.

oli, ou  
iori, la  
eur du  
mono  
este au  
eau de  
taille.

**Les tabi**,  
settes, ont  
te entre le  
le second  
orteil.

**Les zori**,  
sandales,  
ont souvent  
des semelles  
compensées.



**Les armoiries familiales** ou *mon*.

**Le montsuki** est kimono traditionnel pour les hommes ou les femmes orné d'ar...

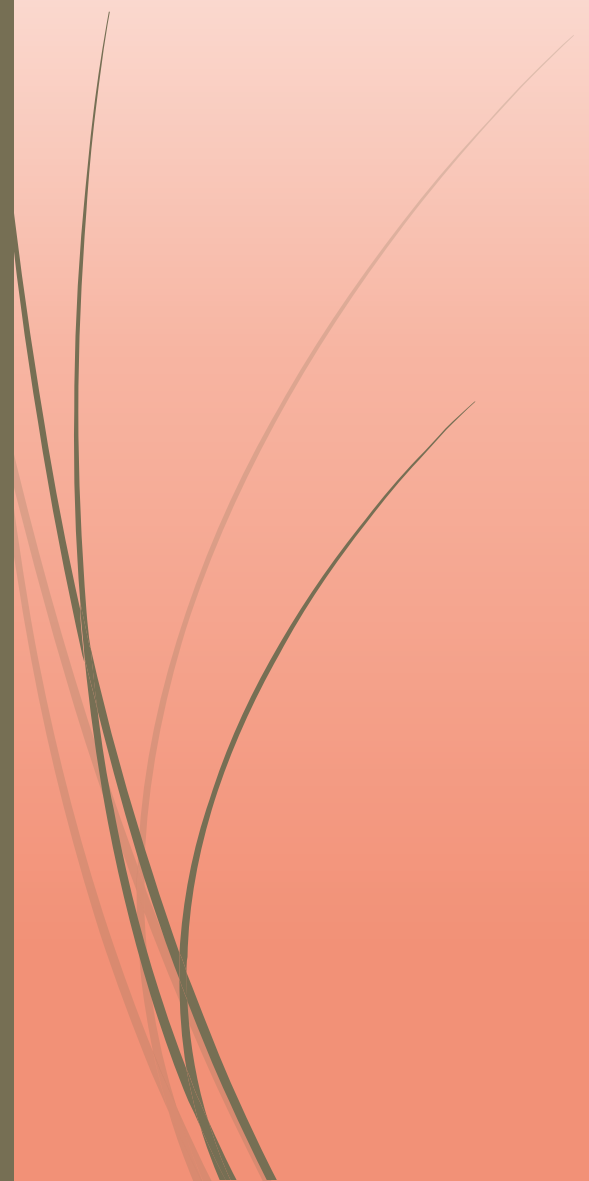
**L'haori** est une veste que l'on porte sur le kimono.

C  
D  
C  
se  
P  
se











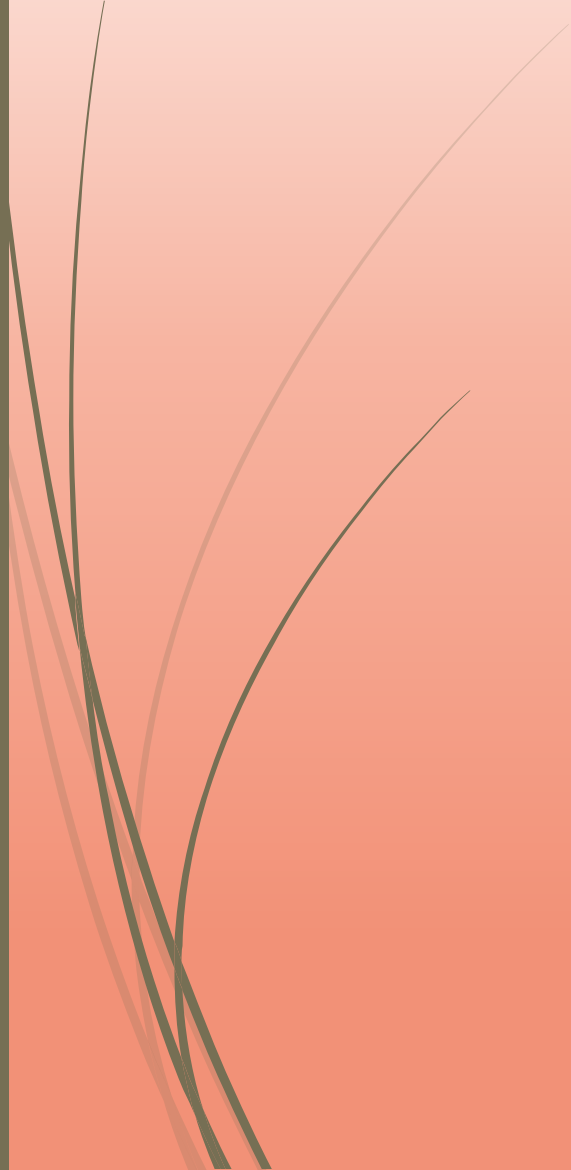














LP













1

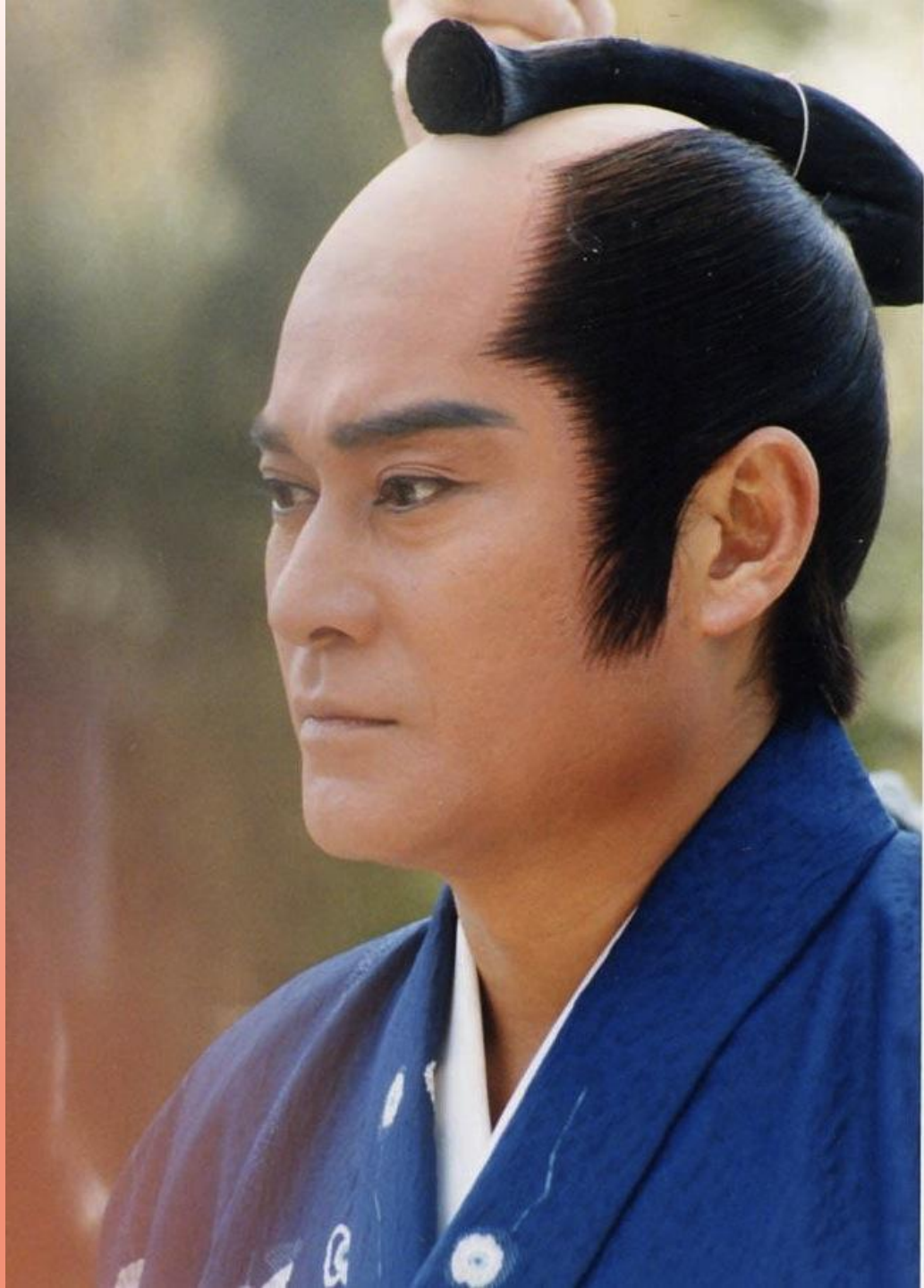
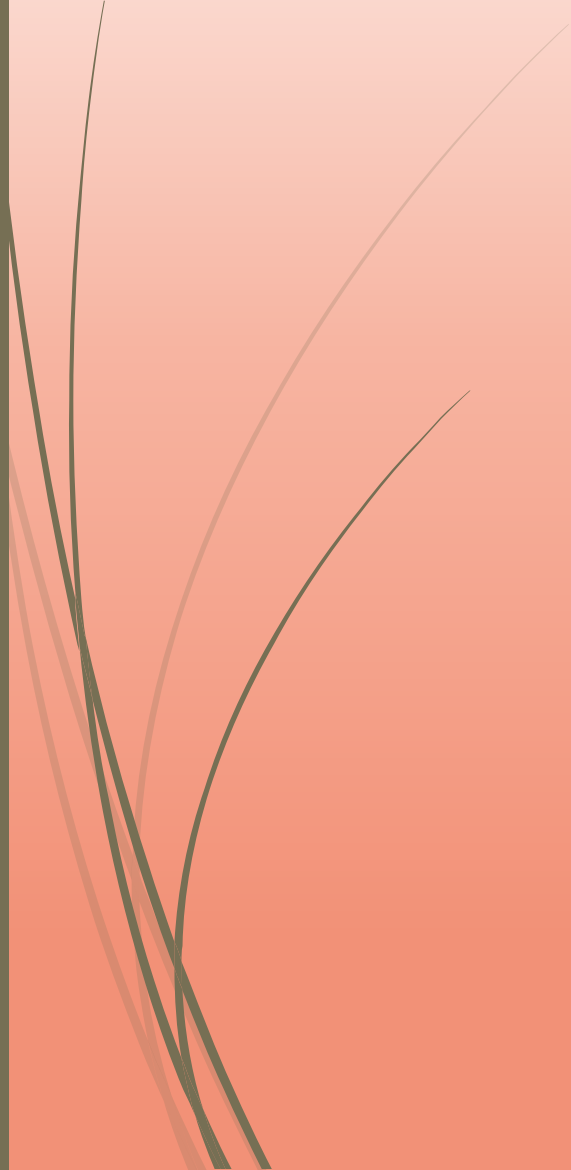
2

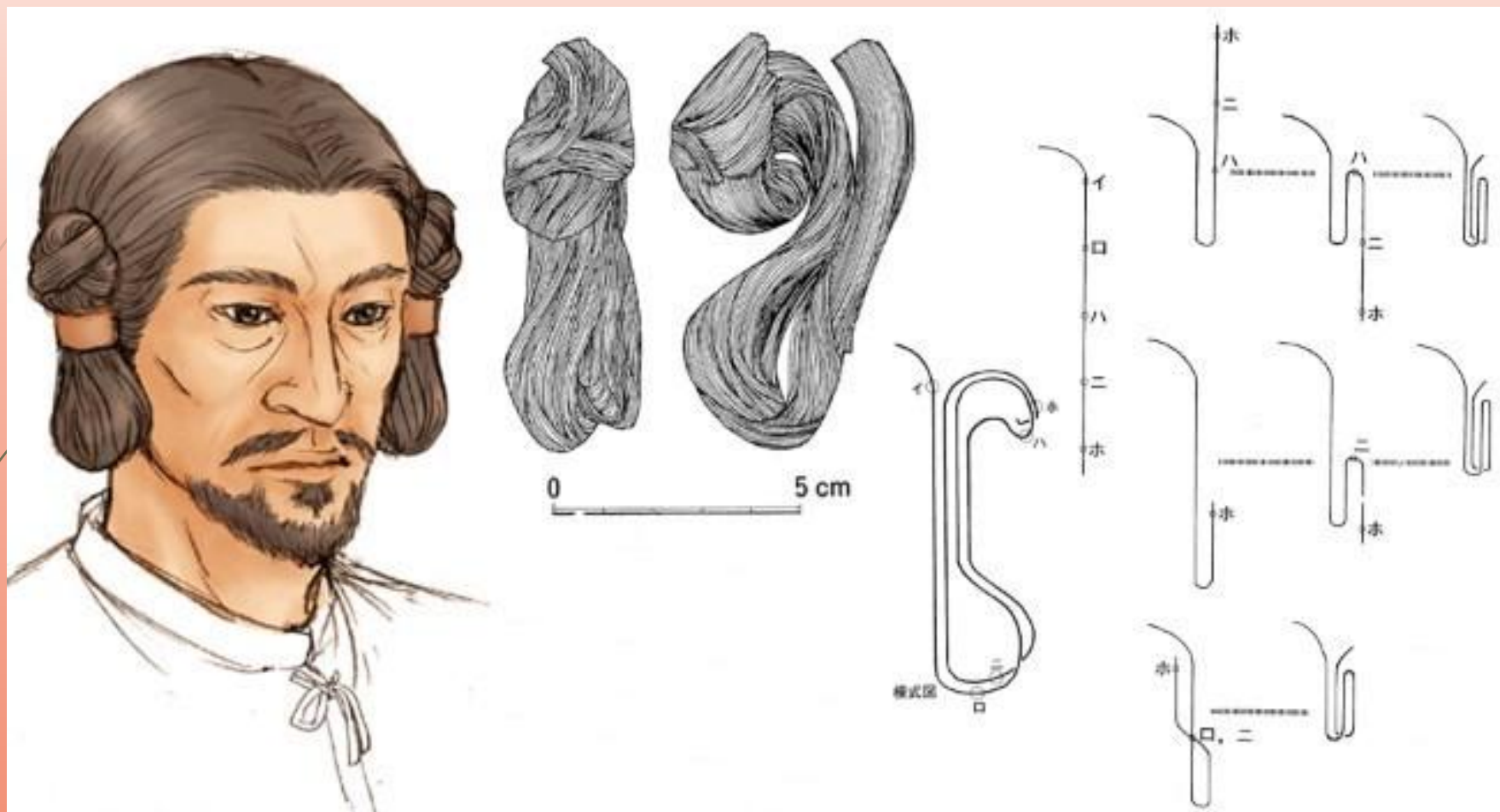
3

**Прически самураев:**

1 — прическа древнего воина, 2 — сакаяки, 3 — плод дерева гинкго

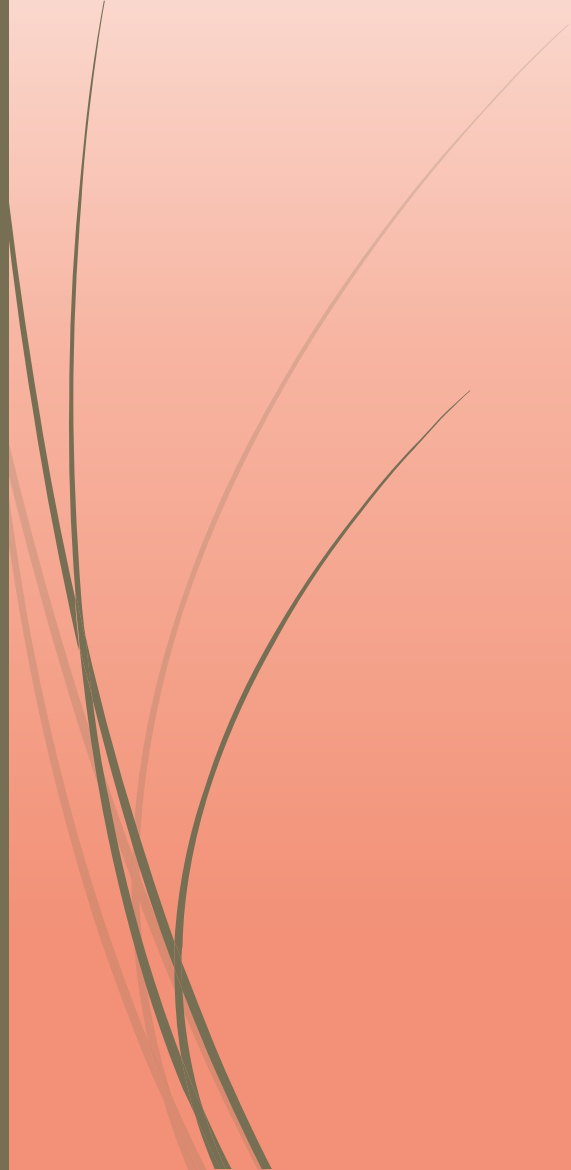


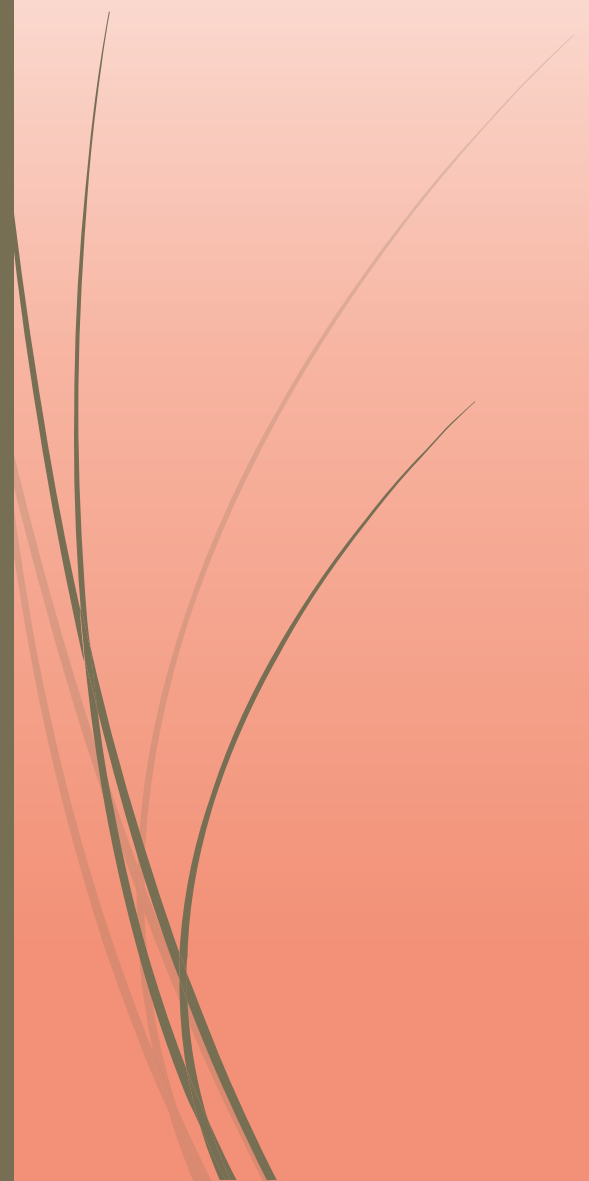








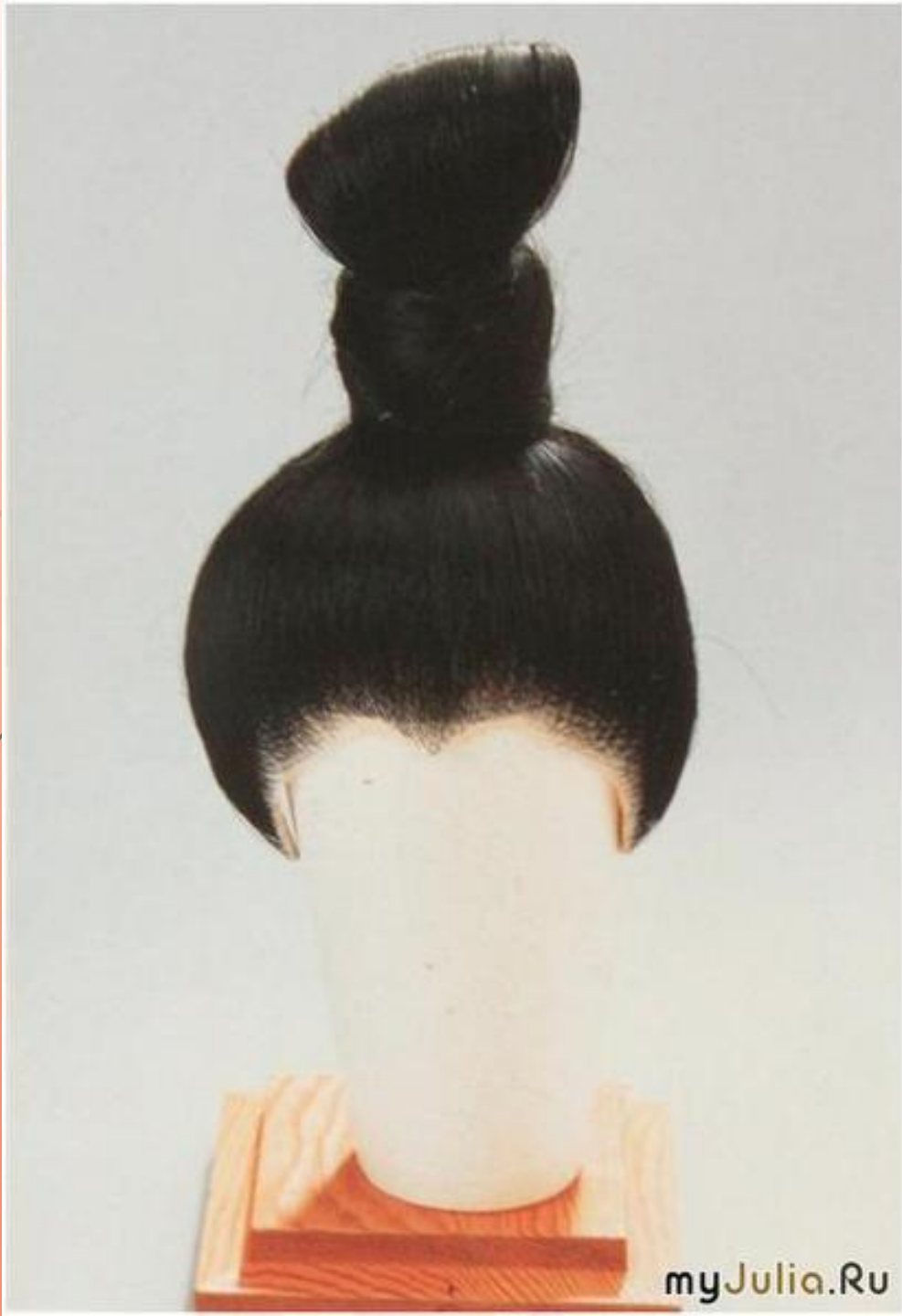


















江戸後期



摩耶ノ花簪



結綿・町娘

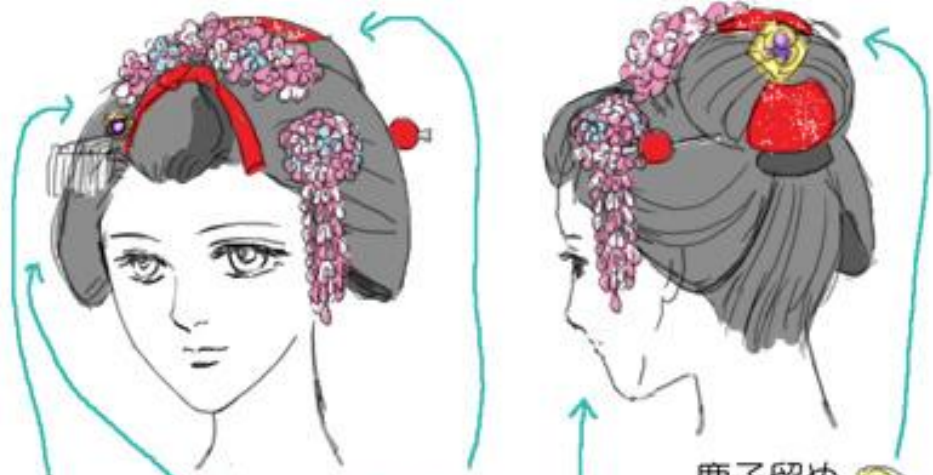


つばし島田・遊女



丸髷・芸者





びら留め



銀のびらびら  
かんざし



つまみ細工  
くし

鹿子留め



玉かんざし



つまみ細工  
かんざし

舞妓



芸妓



