
THE ROMAN ART

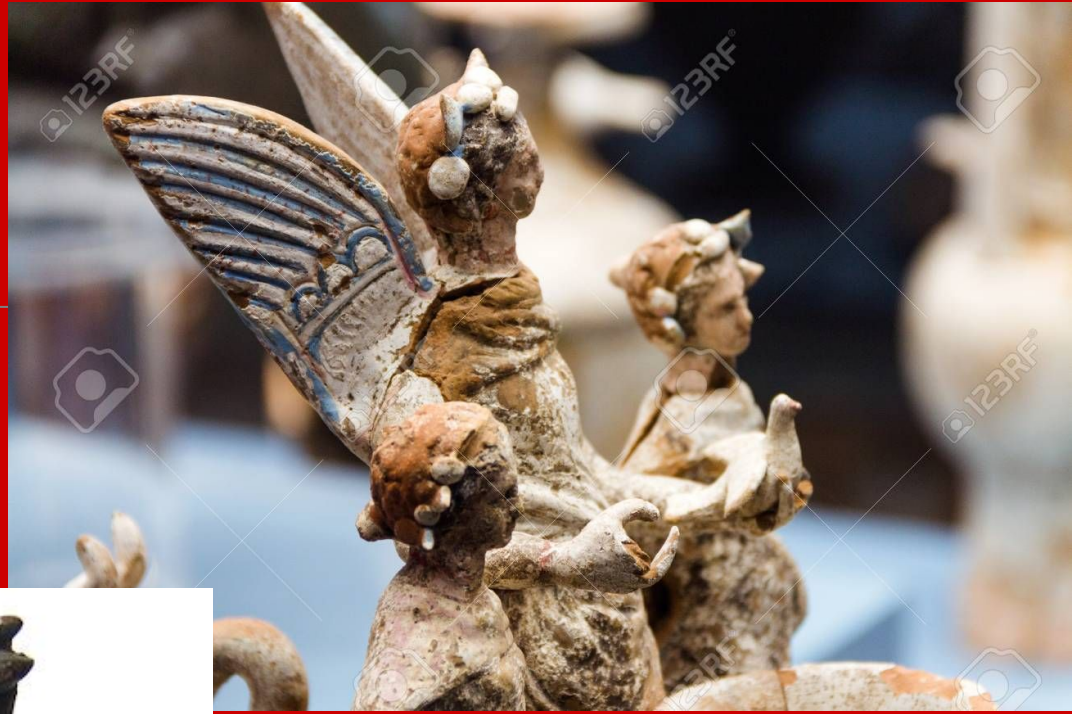


- **sculpture**
- **mosaic**
- **painting**
- **metal work**
- **terraccottas**









EARLY ANTIQUE ART

- eloquent lines
- elegant drapery
- idealized nude bodies
- highly naturalistic forms and balanced proportions



LATE ANTIQUE ART

- frontality
- stiffness of pose and drapery
- deeply drilled lines
- less naturalism
- squat proportions
- lack of individualism
- Key figures are depicted slightly larger or are placed above the rest







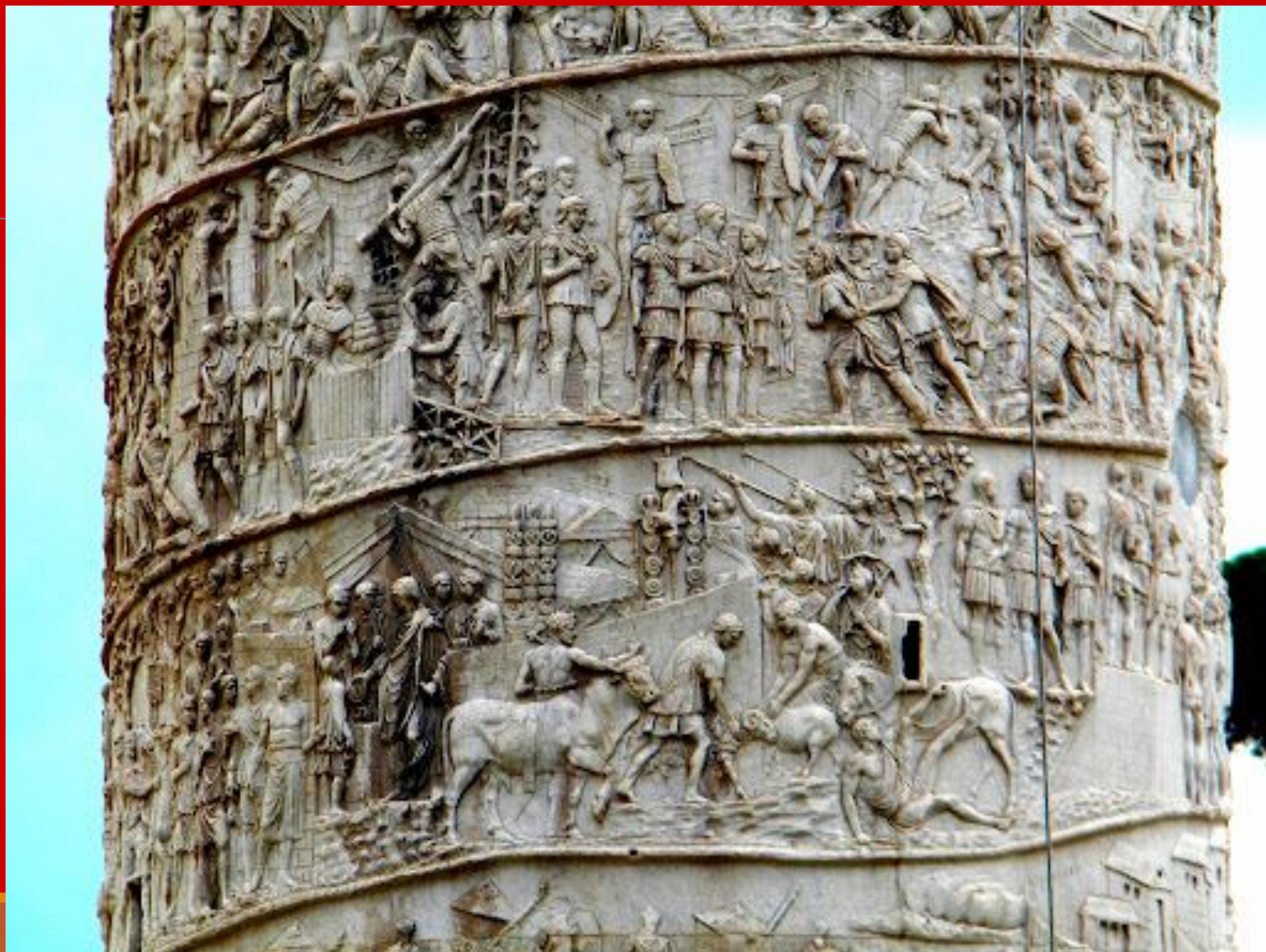






THE COLUMN OF TRAJAN





THE ARCH OF TITUS



INSIGNE RELIGIONIS ATQUE ARTIS MONUMENTVM
VETUSTATE EATISCENS
PIVS SEPTIMIVS PONTIFEX MAX
NOVIS OPERIBVS PRISCVM EXEMPLAR IMITANTIBVS
FVLGIRI SERVARIQVE IVSSIT
ANNO SACRI PRINCIPATVS EIVS XXIII







The Good Shepherd, marble statue, 3rd or 4th century A.D., Vatican Museums, Rome Italy.



© Liebieghaus Skulpturensammlung/Norbert Miguletz

