

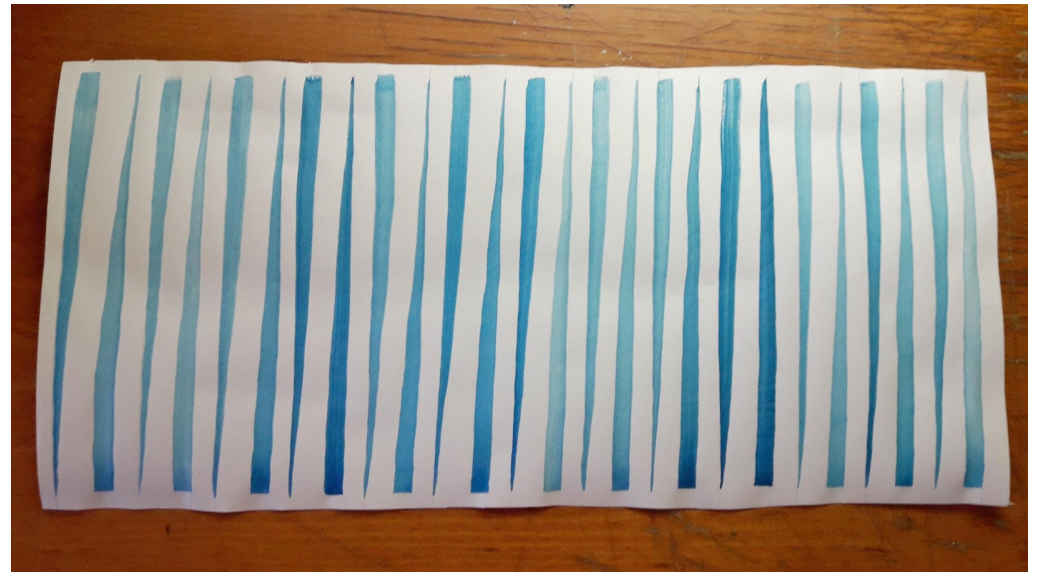
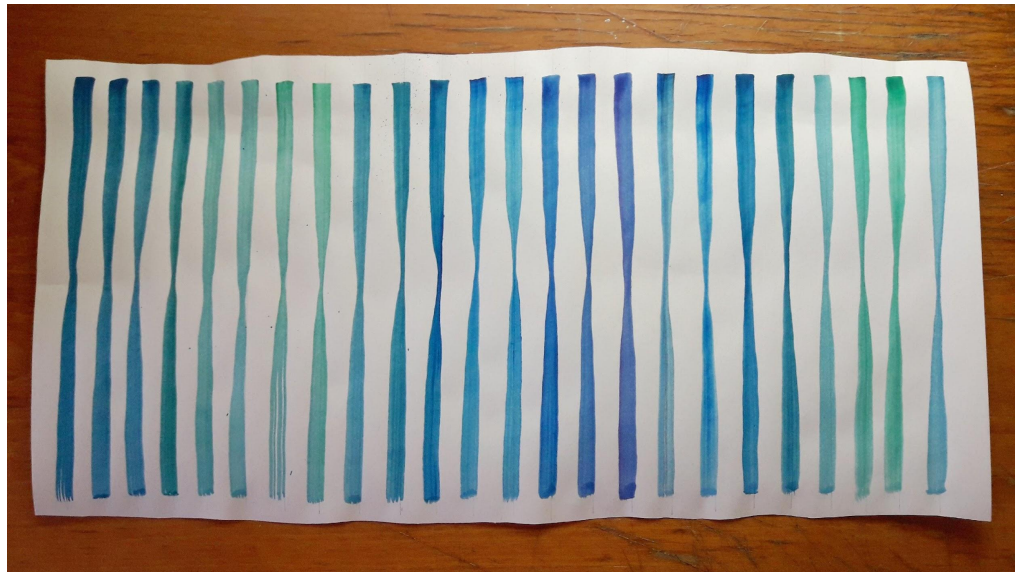
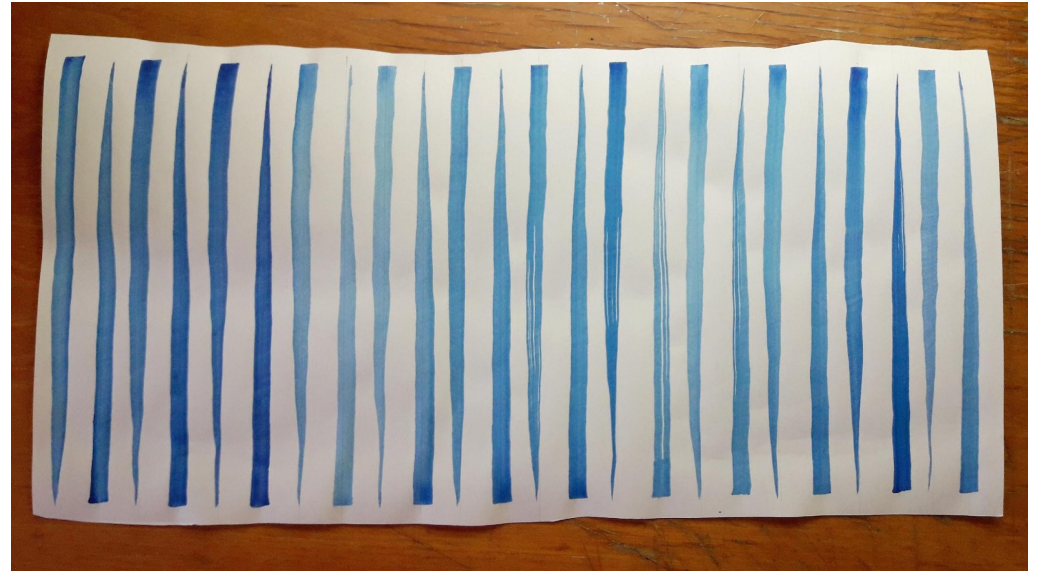
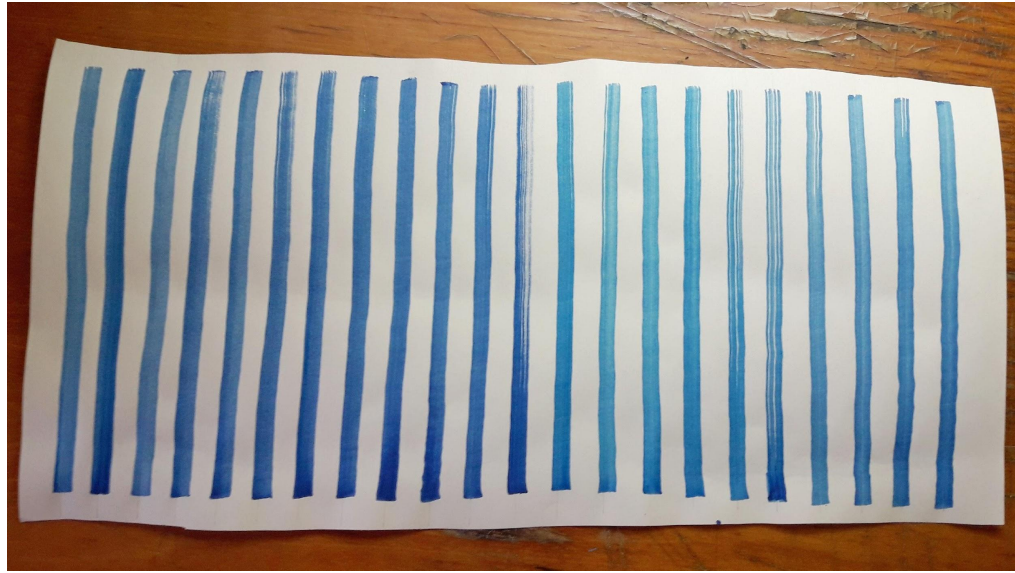
# Зубець Христина

ГД-1

3 курс

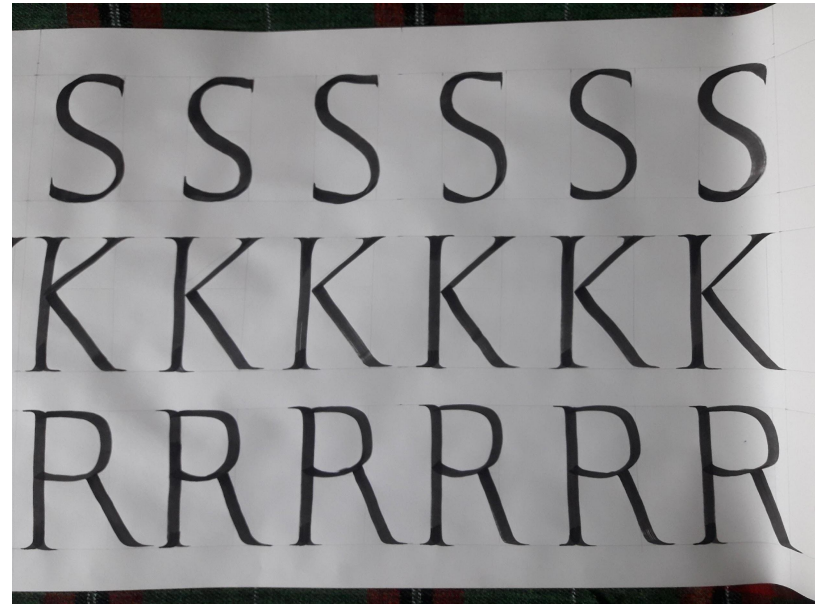
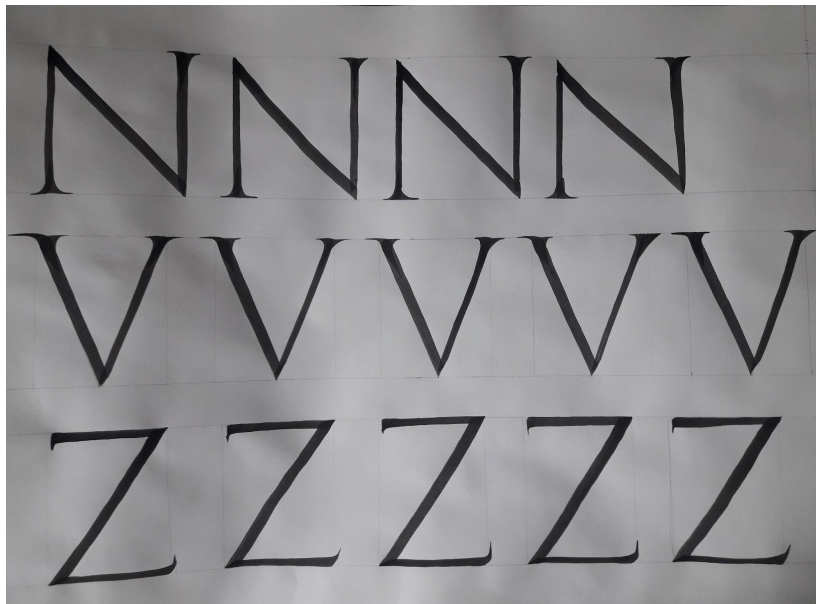
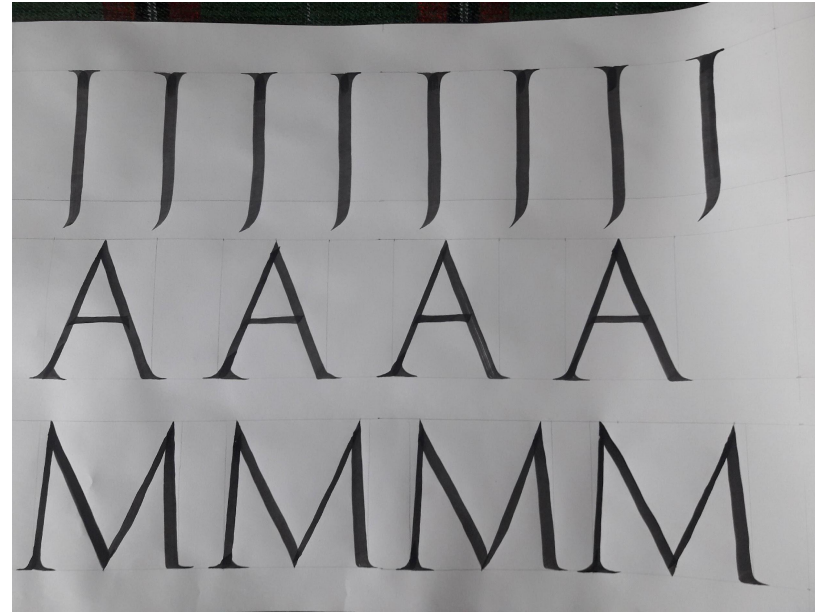
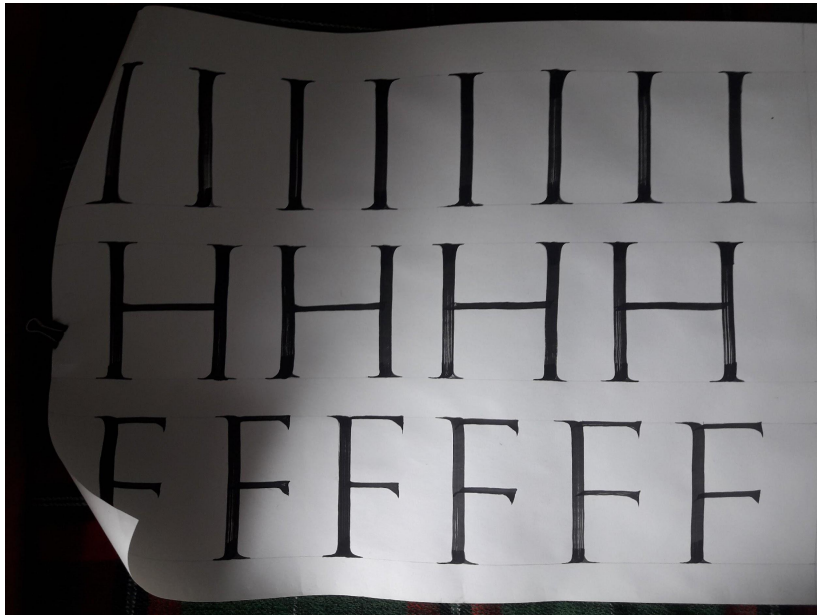
# Завдання 1

Вправи з Римського капітального письма



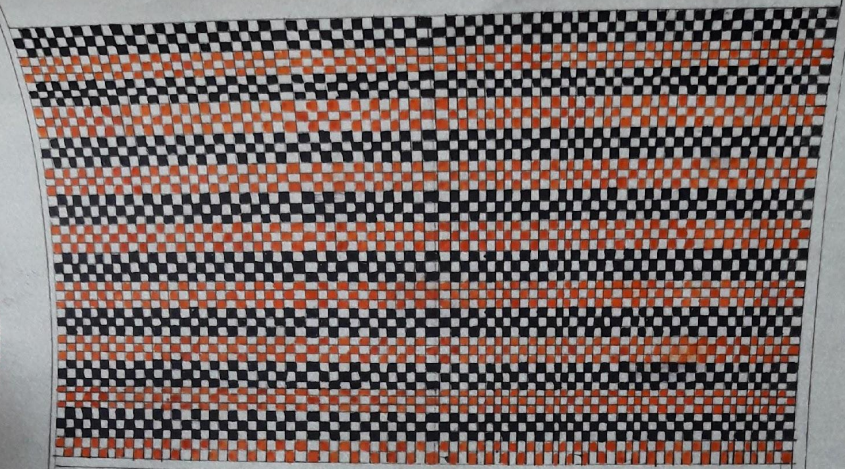
# Завдання 2

Літери Римського капітального письма



# Копія

Ірмологіон кін. XVII – поч. XVIII, Львівщина



ІРМОНЪ ВЪНЪІАІАІАІА



Ірмосъ:

Handwritten musical notation on a page with a decorative border. The page features a large illuminated initial 'І' on the left, a decorative border at the top, and a section of musical notation on the right. The notation consists of several staves with notes and lyrics in Church Slavonic. The lyrics are: 'ІРМОНЪ ВЪНЪІАІАІАІА', 'Ірмосъ:', 'ІРМО СТО ЛА ГА', 'СТА СЛА КТ МЕ ХС', 'СРЕ РЕ СЕ РА', 'ІА МЕ ХС НА РЕ', 'АН РО НС СН МЕ СА', and 'ІРМО'.