



Рисунок 1.1

Оттиск анатомический

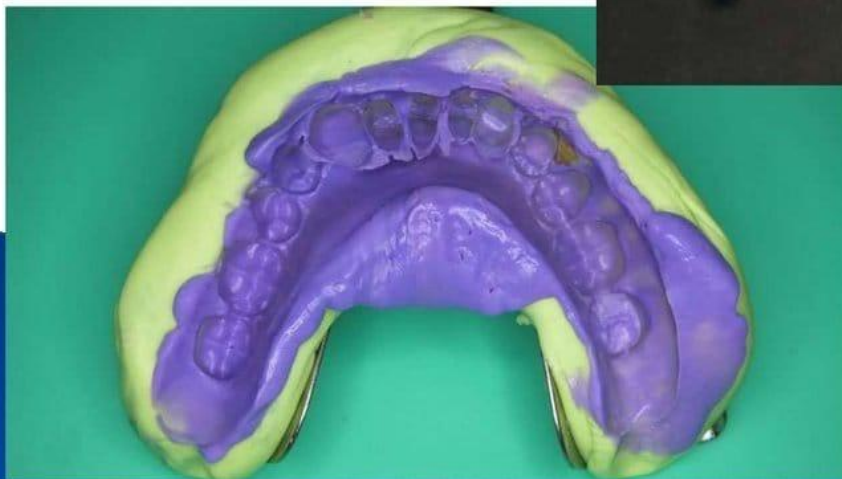


Рисунок 1.2

Оттиск функциональный

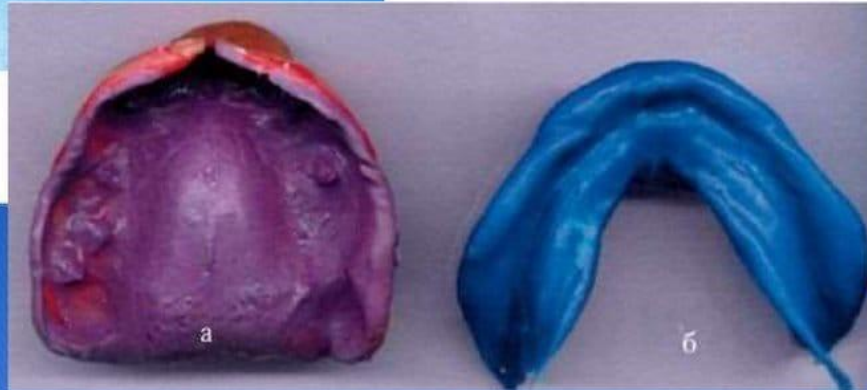


Рисунок 1.3



Рисунок 1.4



Рисунок 1.5

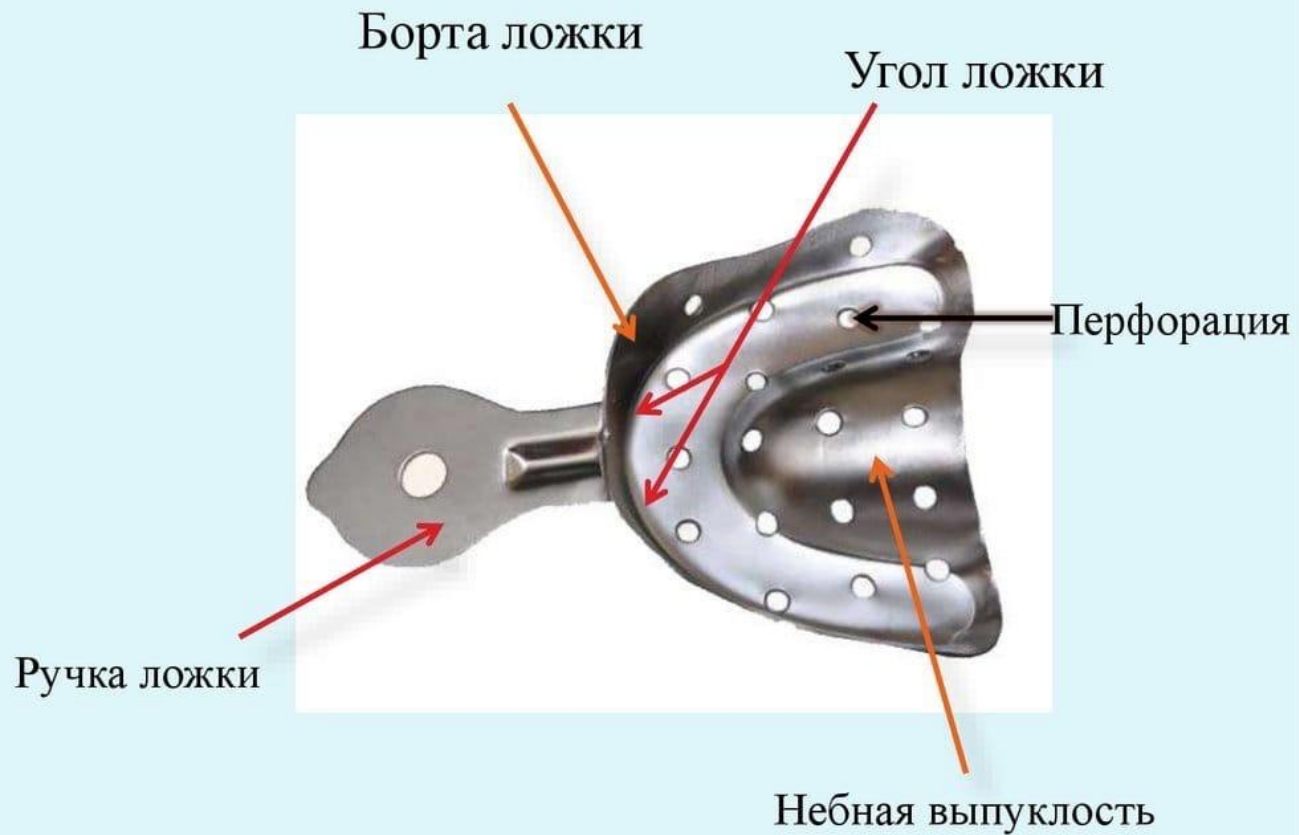


Рисунок 1.6



Рисунок 1.7

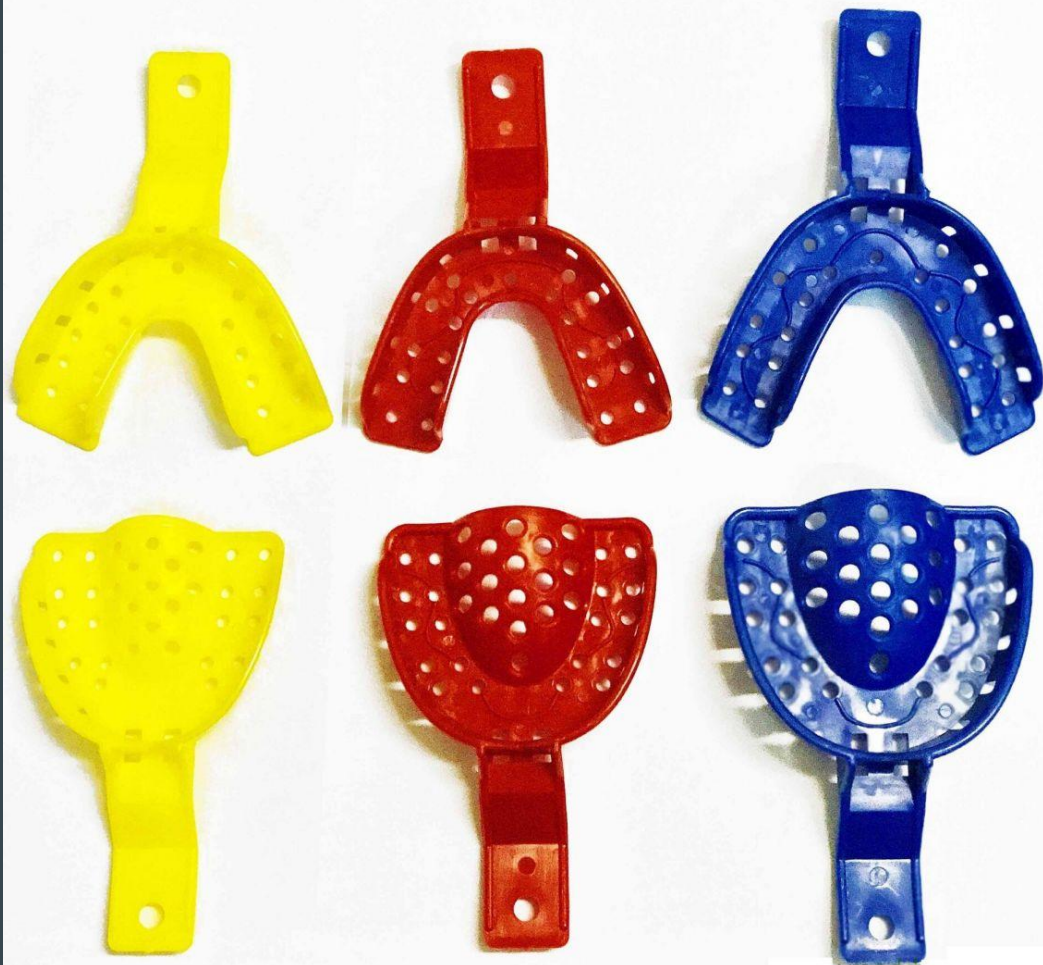


Рисунок 1.8



Рисунок 1.8



Lower / Inferiori



Upper / Superiori



Lower / Inferiori



Upper / Superiori



Fig. 30
DI.900.300
Upper left / Lower right
Superiore sinistra / Inferiore destra



Fig. 31
DI.900.310
Lower left / Upper right
Inferiore sinistra / Superiore destra



Fig. 32
DI.900.320
Lower jaw
Inferiore



Fig. 33
DI.900.330
Upper jaw
Superiore



Fig. 99
DI.900.990
Lateral
Laterale



Fig. 30
DI.905.300
Upper left / Lower right
Superiore sinistra / Inferiore destra



Fig. 31
DI.905.310
Lower left / Upper right
Inferiore sinistra / Superiore destra



Fig. 32
DI.905.320
Lower jaw
Inferiore



Fig. 33
DI.905.330
Upper jaw
Superiore



Fig. 99
DI.905.990
Lateral
Laterale

Рисунок 1.10

