



SPARKLING ENERGY



Sparkling Energy Hi-Technology Company Limited

CONTENTS

01 About Us

02 Business Areas

03 Integrated Solutions

04 Successful Projects

05 Contact Us





SPARKLING ENERGY

01. About us

Three core business sectors, Engineering Services, procurement services and onsite project management.

■ Who Are we



- Sparkling Energy Hi-Technology Co., Ltd. (SEH) was established in 2016 in Hong Kong and has headquarters in Beijing, China.
- SEH focuses on energy services with three core business segments: Engineering Services, procurement services and onsite project management.

■ What Do We Do



SPARKLING ENERGY

SEH recruited a number of experts and consultants for all required disciplines. **We have the experienced process, piping, mechanical, civil, electrical and instrumentation engineers, as well as the best planning & control, procurement, logistics, inspection, quality, and safety experts.** They previously serviced for eminent engineering companies and designing institute in Oil & Natural Gas and Power industry.

Our experts have at least more than ten-years working experience in oil & gas industry and some of them even have more than twenty-years associated working experience. **They took critical position in large-scale international projects to conduct FEED and detail design.** Their high level of professionalism and commitment is our core competence and drive us to achieve higher goals.





02. Business Areas

SEH has its representative in Africa, Central Asia, the Middle East, Europe and other regions. Its business scope covers gas processing, Gas power plant, underground gas storage, gas compression station, gas gathering and transportation etc.



SPARKLING ENERGY

Compressor Station

天然气增压站

The compressed station set up inside the oil and gas fields is to delivery ⁿvery gas to the gas treatment plant for desulfurization, decarburization, ^{and} dehydration, and recovery of liquefied petroleum gas, etc., so that the gas can meet the requirements of sale natural gas temperament.





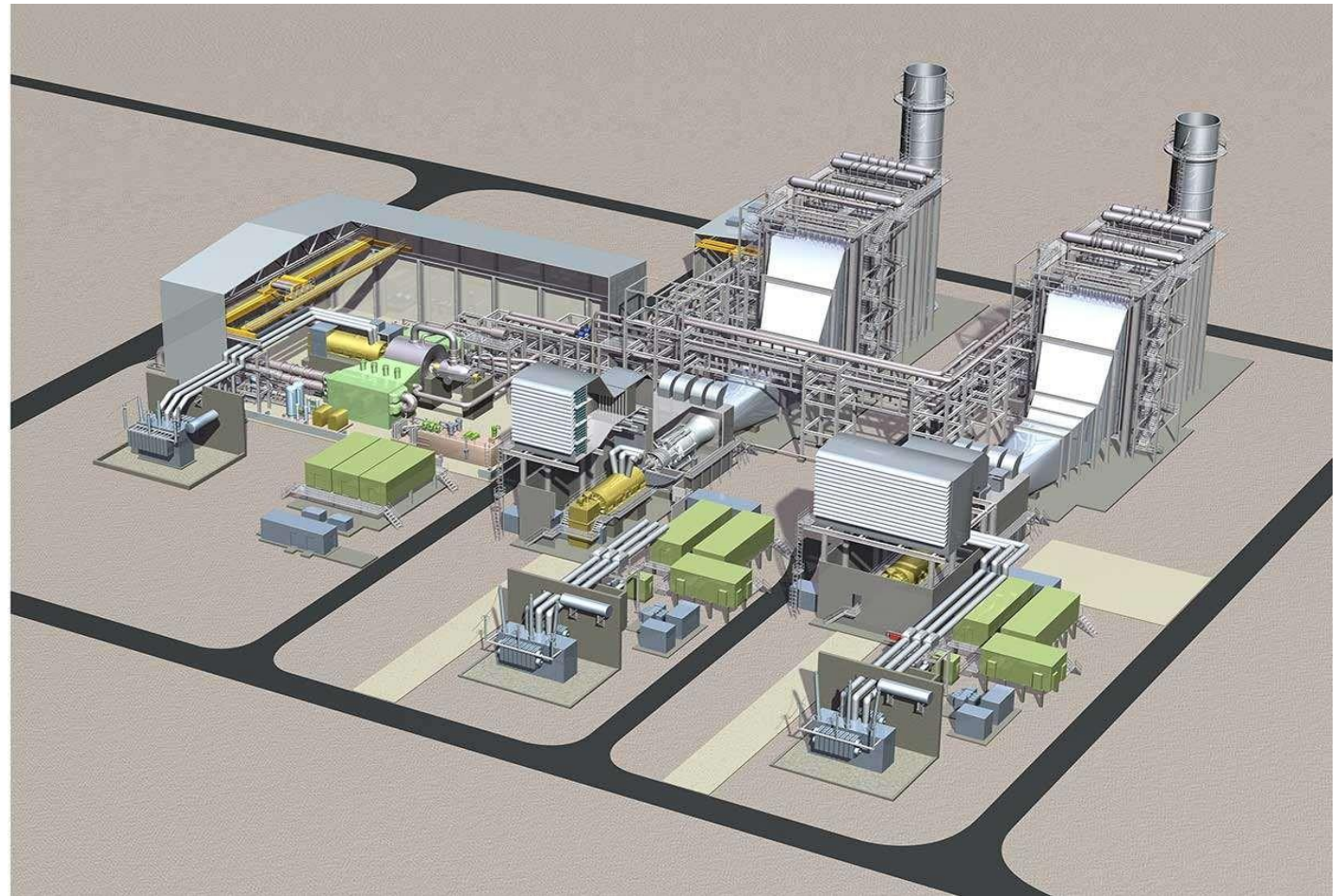
SPARKLING ENERGY

Gas Power Plant

Modular engineering service
for:

Simple cycle gas plants/

Combined cycle gas plants





天然气处理站

its main task is to extract the heavy component and its impurities included by the natural gas or crude oil accompanying gas produced by the gas well,



天然气集输

Gas production wellhead, transceiver barrel, heating furnace, test separator, production separator, gas pressure regulator, instrument air, valve, control system, instrument, genset, flare system, E-house, firefighting system, etc

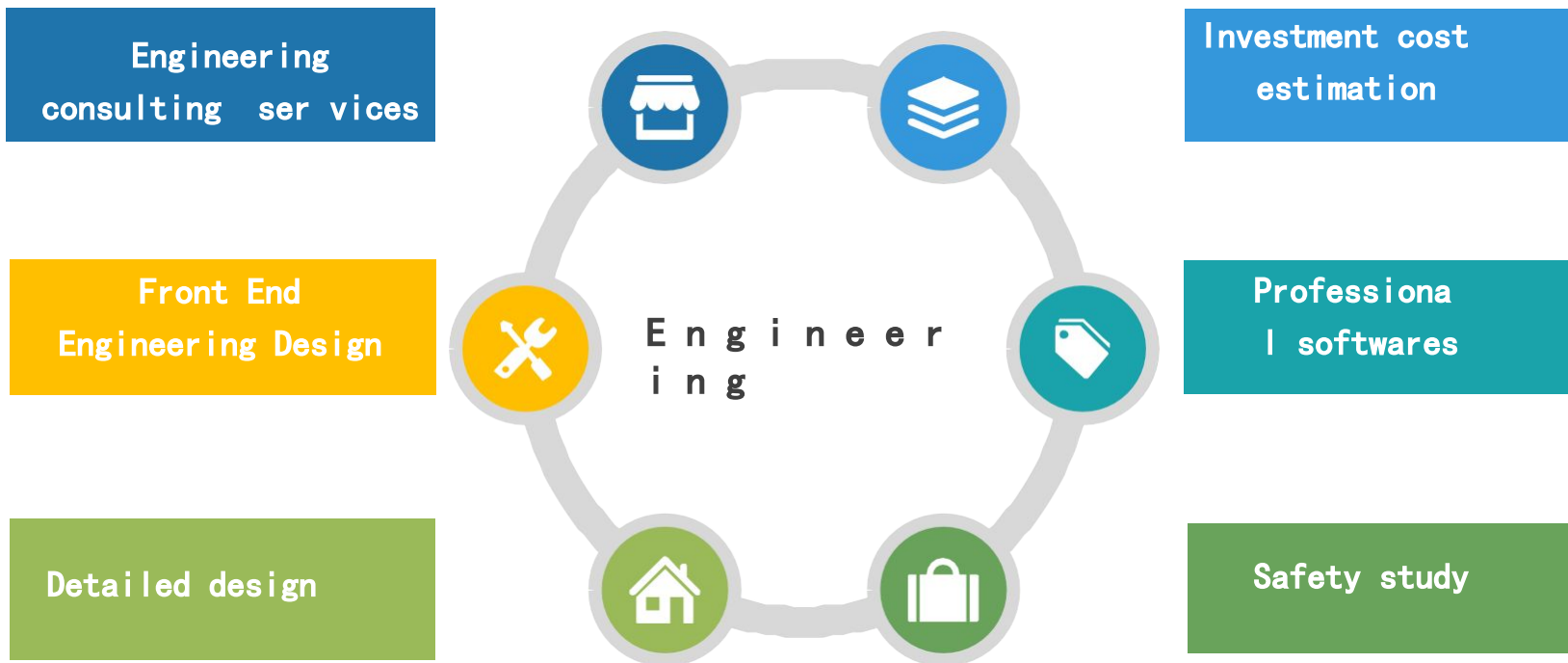


03 Integrated Solutions

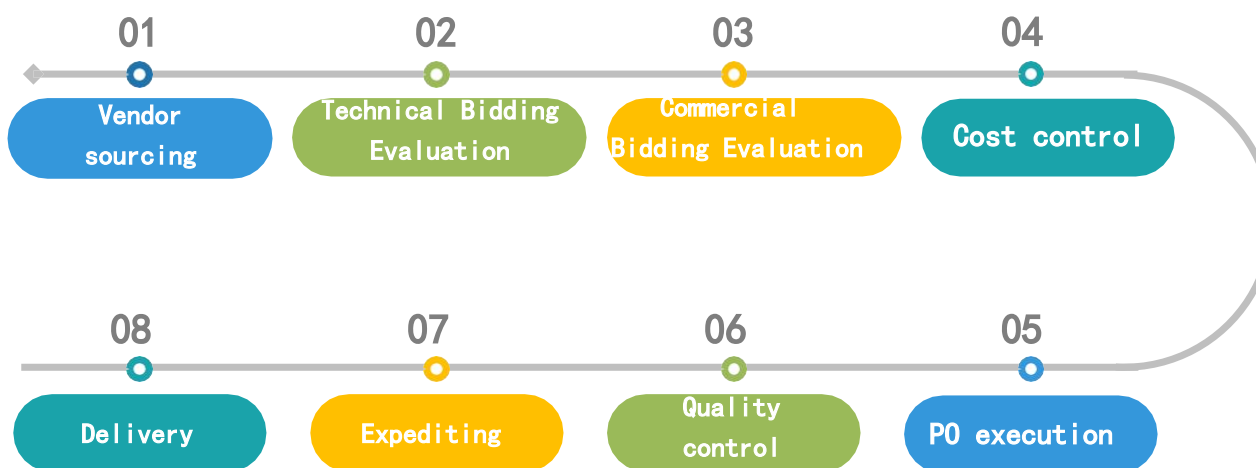
SEH is providing integrated solutions (Engineering services, procurement services, project management) for our customers



Engineering Service



Procurement Service



We designate experienced quality inspector to witness the production progress , factory acceptance test (FAT) and packing inspection before shipment.

Project management

SEH allocated dedicated and experienced project manager to manage the following steps



Project Execution



installation support



Comissioning service



After-Sales Services



04. Successful Projects

SEH devotes to executing global project in oil&gas industry



ANOKYI COMPR-ESSOR STATION EPCC PROJECT PHASE I

Type: Gas Compression Station

- ▶ Time: 2017 - 2019
- ▶ Location: Ghana
- ▶ Client: Ghana National Gas Company
- ▶ Capacity: 4MW Reciprocating compressor
- ▶ Service Description:

1. Detailed design including process, mechanical, piping, electrical, instrument, civil, structure, telecommunication, and HSE.
2. Procurement consulting service

- ▶ Type: Gas Compression Station
- ▶ Time: 2020 till now
- ▶ Location: Ghana
- ▶ Client: Ghana National Gas Company
- ▶ Capacity: 10MW centrifugal compressor
- ▶ Service Description: FEED & detailed design including Process, Mechanical, Electrical, Piping, Instrument, Civil & structure design.

-
-
-

ANOKYI COMPRESSOR STATION EPCC PROJECT PHASE II



**Main gas gathering station,
and gas processing plant of
block A, Bagtyarlyk
contract area,**

Client: CNPC
Turkmenistan
INTERNATIONAL
(Turkmenistan)

- ▶ Location: Turkmenistan
- ▶ Time: 2016–2017 year
- ▶ Capacity: 5.7 billion m³/year
- ▶ SOW: Design service of Natural Gas processing, including desulfurization, decarbonization, dehydration, and sulfur recovery units Supply of long lead items



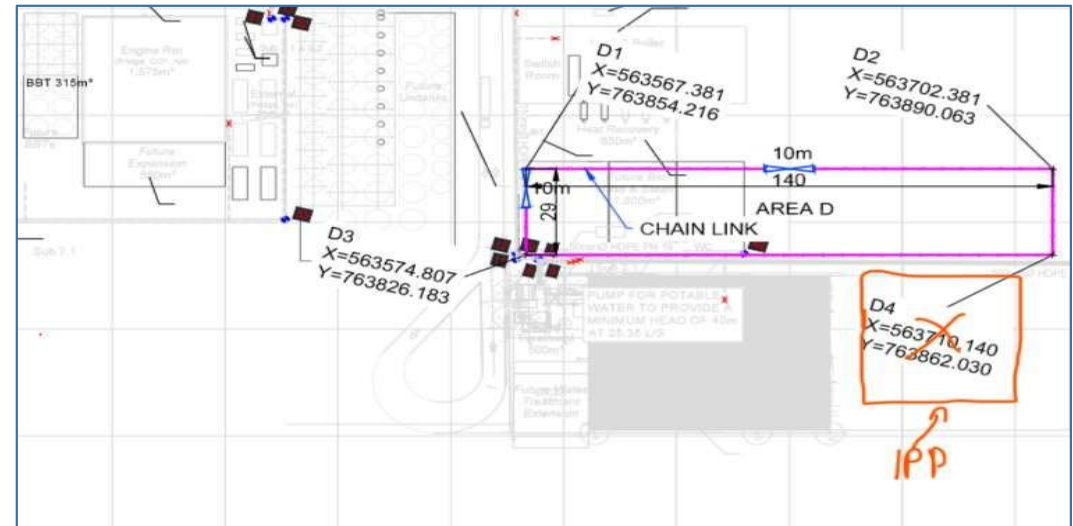
Nigerian 14MW dual-fuel combined heat and power station Phase I & Phase II

Client: Hamakang Global Services Ltd.
EPC contractor: CGGC UN Power Co., Ltd.

Location: Onitsha, Ilesha, Pabod, Gateway

Time: 2020

Capacity of power station: 14MW (Solar C50 & C40)



SOW: detailed design

Gas power plant

Project:

Georgia Gadabani II Project

- ▶ Type: Gas Power Plant
- ▶ Time: 2017 -2019
- ▶ Location: Georgia
- ▶ Capacity: 240MW (GE)
- ▶ SOW: Modular Design for Gas turbine Package





SPARKLING ENERGY



Zhanazhol Oil & Gas Processing Plant Phase II

- ▶ Client: CNPC Aktobemynaigaz Location: Kazakhstan
- ▶ Time: 2016–2017
- ▶ SOW: detail design for dehydration unit&sulfur recovery unit Supply of longlead items



Display Finished

THANKS