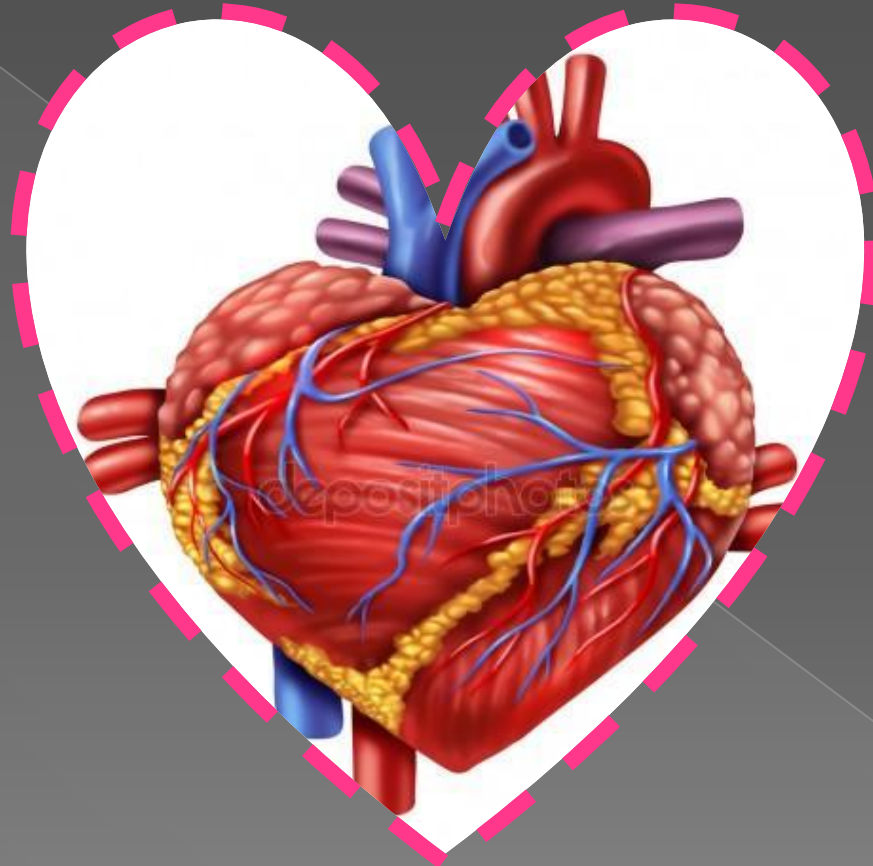


THE HUMAN HEART



by: Muratova Akerke
@aamurr_

Facts about the Human Heart

- Is a muscle



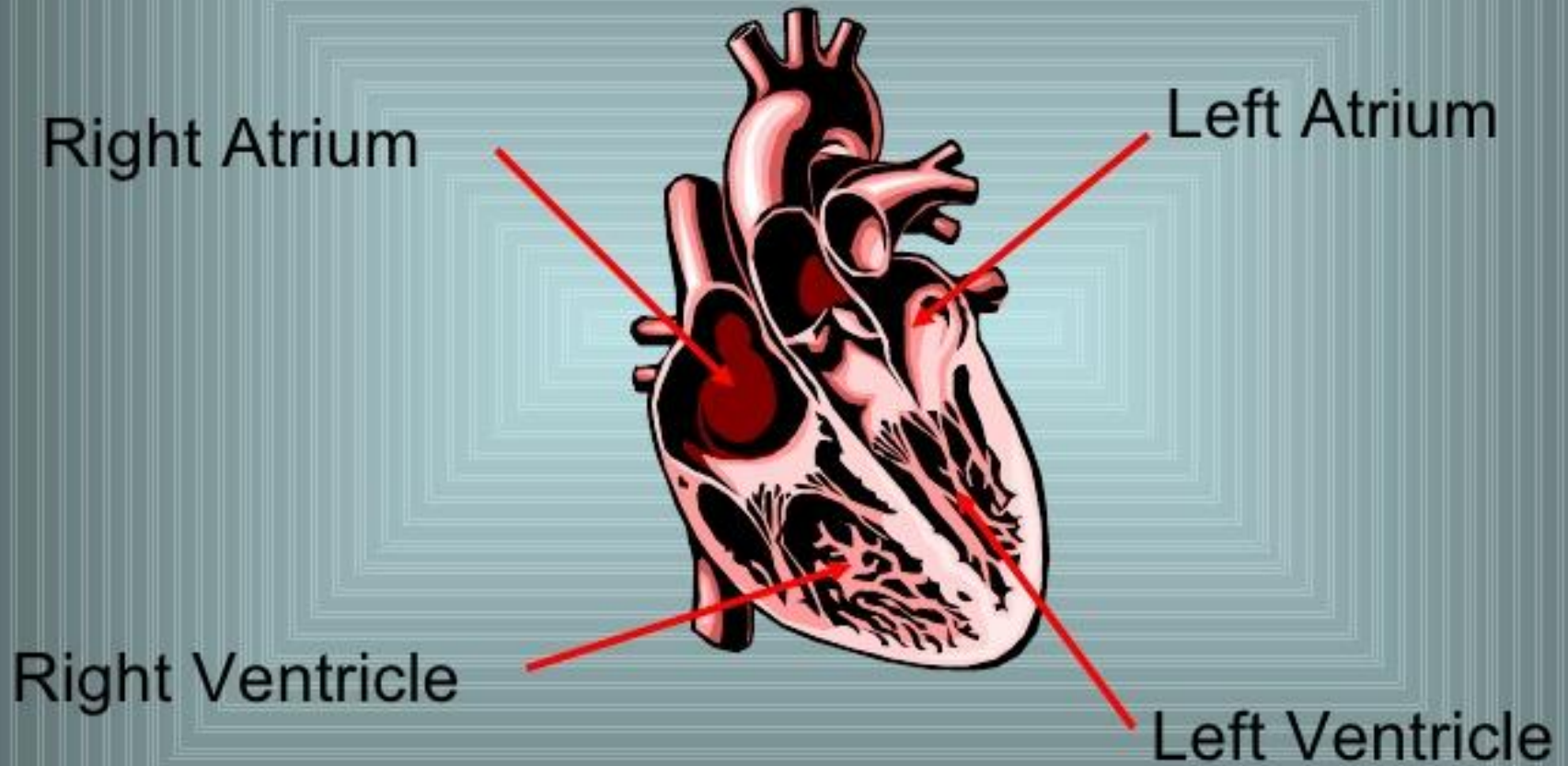
- Moves 2,000 gallons of blood each day



- Beats between 60 to 100 times per minute



Four Chambers of the heart



Arteries and Veins

Superior Vena Cava

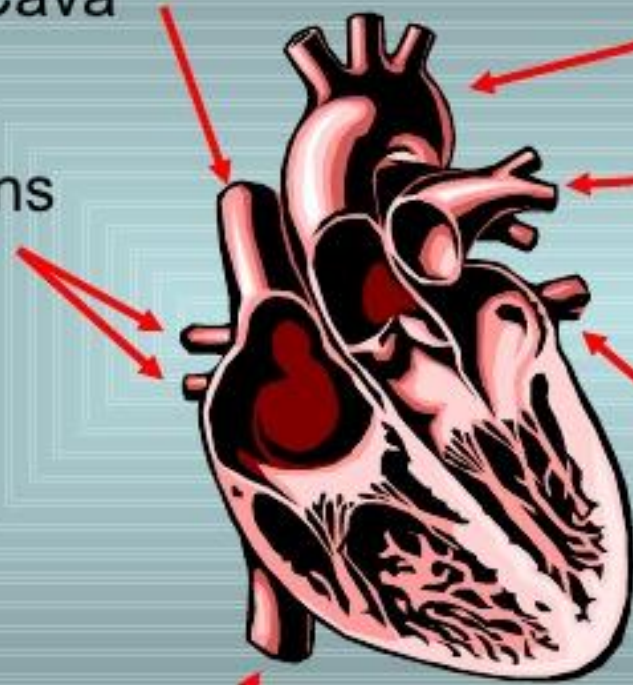
Aorta

Pulmonary Veins

Left Pulmonary Artery

Pulmonary Veins

Inferior Vena Cava

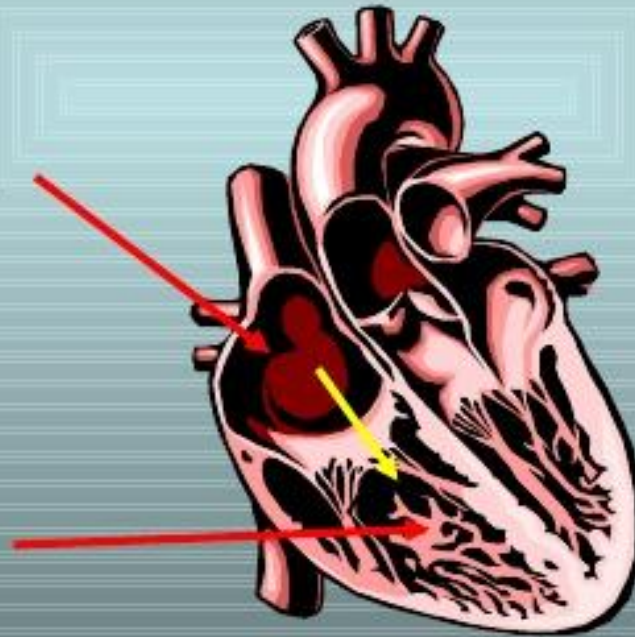


Right Atrium

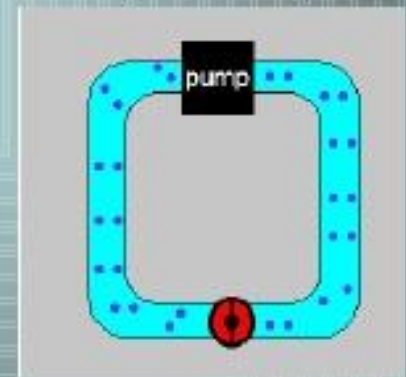
- Receives de-oxygenated blood from the superior vena cava and pumps it into the right ventricle.

Right Atrium

Right Ventricle



(Heart)

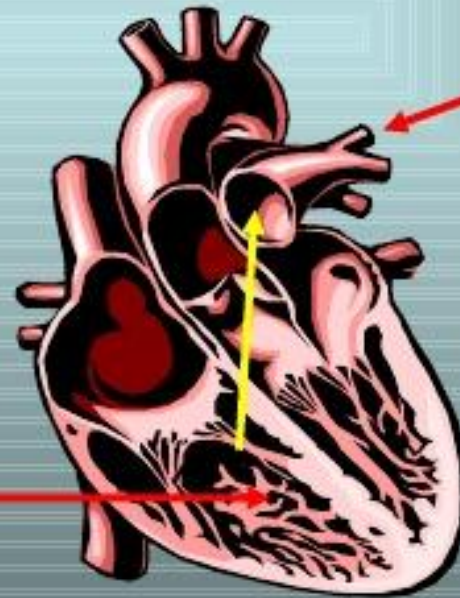




Right Ventricle

- Receives de-oxygenated blood from the right atrium and pumps it into the pulmonary artery.

Right Ventricle

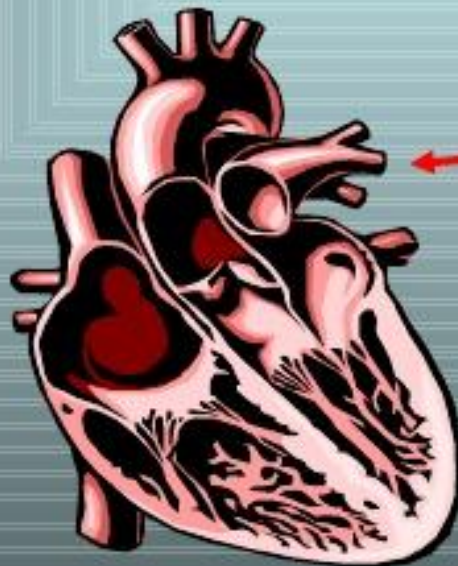


Pulmonary
artery



Pulmonary Artery

- Receives de-oxygenated blood from the right ventricle and moves it into the lungs to pick up oxygen.
- Fact: arteries carry blood away from the heart.

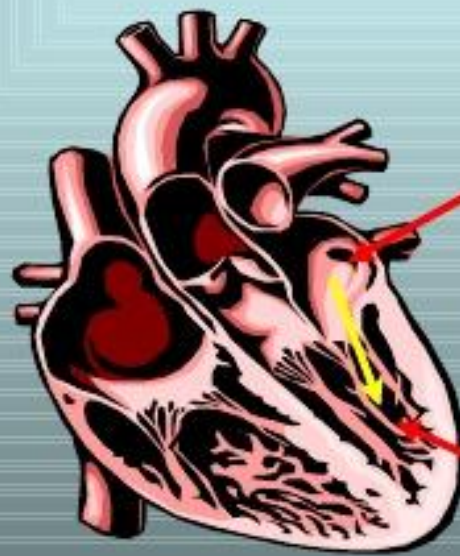


Pulmonary Artery



Left Atrium

- Is larger than the right atrium, it receives oxygenated blood from the pulmonary veins, and pumps it into the left ventricle.

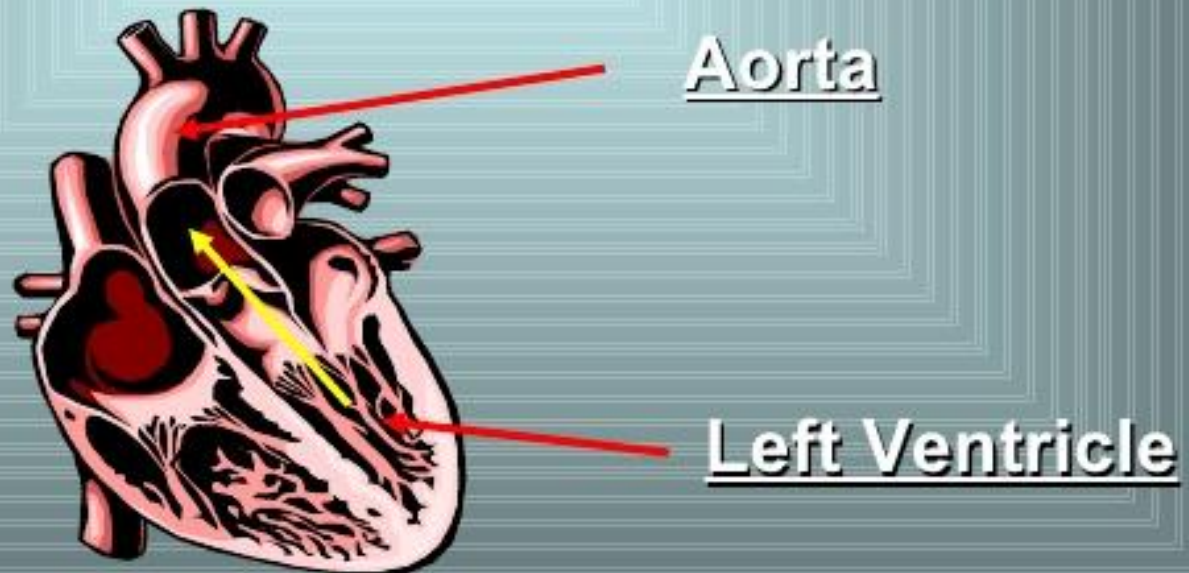


Left Atrium

Left Ventricle

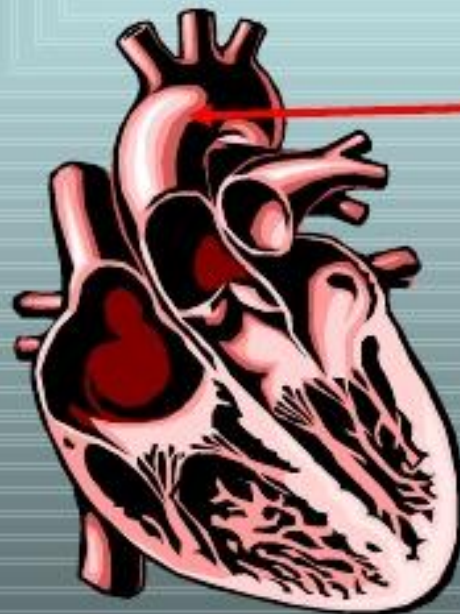
Left Ventricle

- Is larger than the right ventricle, it receives oxygenated blood from the left atrium, and pumps it into the aorta.



Aorta

- Is the largest artery in the human body, it receives oxygenated blood from the left ventricle of the heart and moves it to all parts of the body.

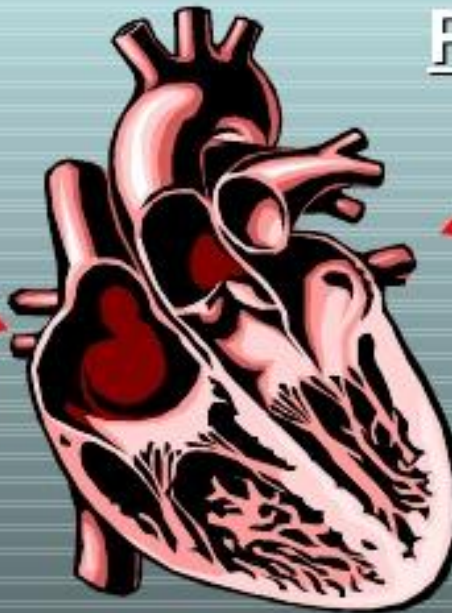


Aorta

Pulmonary Veins

- Carry oxygenated blood from the lungs to the left atrium of the heart.
- Fact: They are the only veins that carry oxygenated blood.

Pulmonary Veins



Pulmonary Veins

Inferior Vena Cava

- Is the large vein that carries de-oxygenated blood from the lower half of the body into the heart.

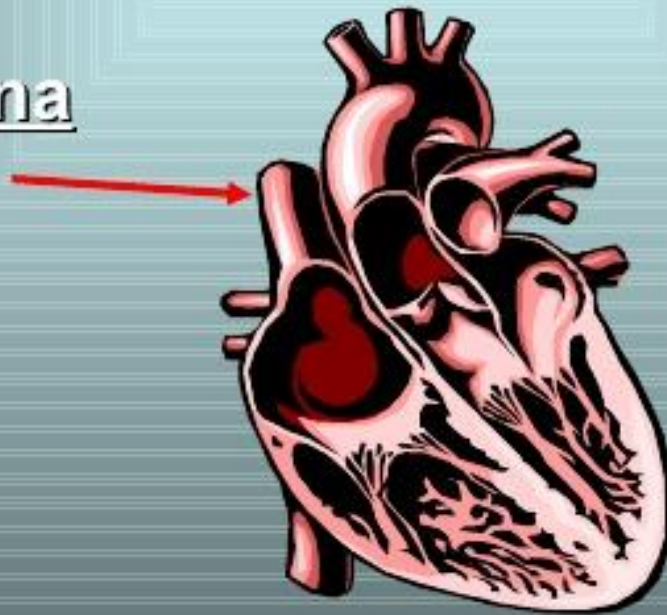
Inferior Vena Cava



Superior Vena Cava

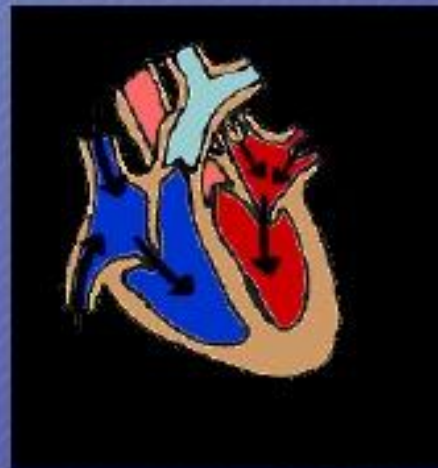
- Is a large but short vein that carries de-oxygenated blood from the upper half of the body to the hearts right atrium.

Superior Vena
Cava



Summary

- The human heart has four chambers
2. Right Atrium
 3. Left Atrium
 4. Right Ventricle
 5. Left Ventricle



Summary Continued

- The arteries of the heart carry blood away from the heart.
- The veins of the heart carry blood to the heart.
- The largest artery in the body is the aorta.

Lets see what you remember.

True False

- a. 20
- b. 1500
- c. 2000

True False

- a. Pulmonary Vein
- b. Right Atrium
- c. Aorta

True False

6. Pulmonary veins are the only veins that carry oxygenated blood.

True

False

7. The left atrium is smaller than the right atrium.

True

False



Work cited

Images

American Heart Association

www.worldinvisible.com

www.med.umich.edu

www.diamond-webdesigns.com

www.bigoo.ws

Information

www.en.wikipedia.org

THANK FOR YOUR
ATTENTION!