

**What do you know
about**

AUSTRALIA?



1. What is the capital of Australia?

◆ A) Sydney



◆ B) Melbourne



◆ C) Canberra

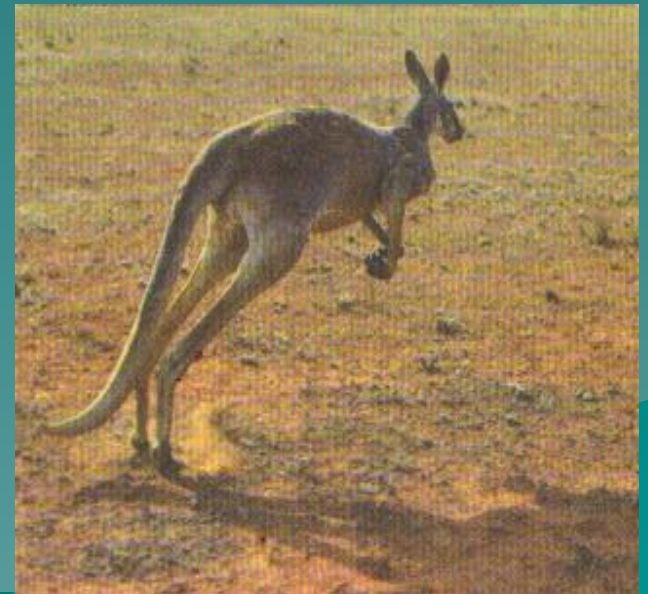
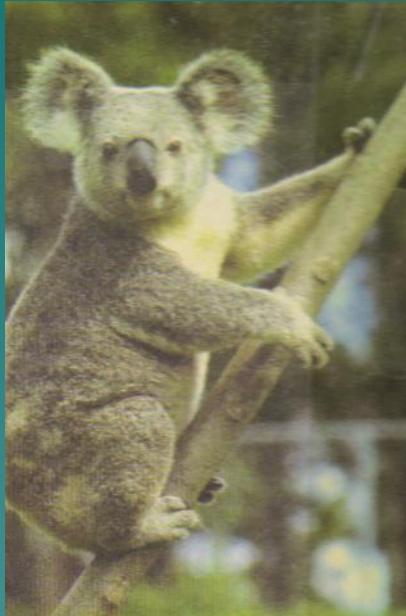
2. When did Europeans settle in Australia?

- ◆ A) 1488
- ◆ B) 1788
- ◆ C) 1492
- ◆ D) 1901



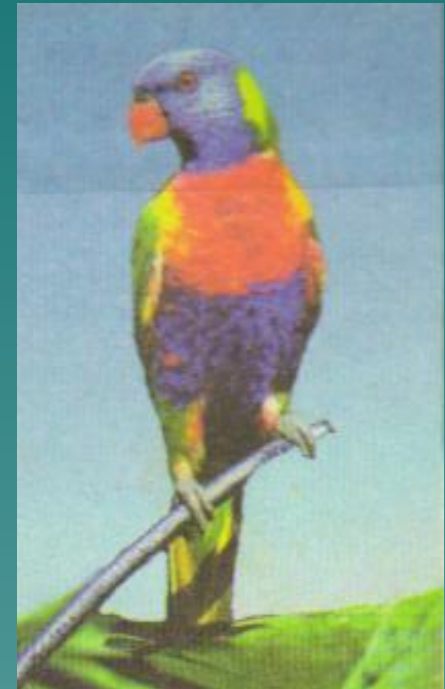
3. Which is/are a popular Australian animal(s)?

- ◆ A) Koala
- ◆ B) Kangaroo
- ◆ C) Emu
- ◆ D) All of them above



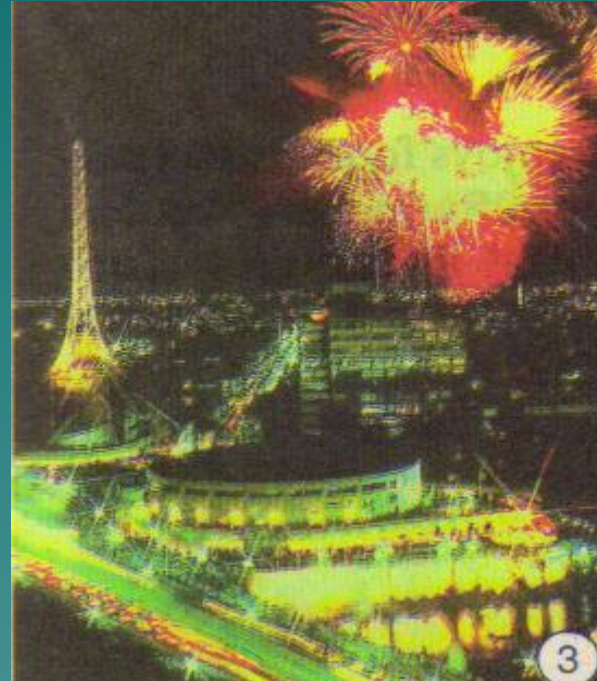
4. Which two animals can you see on the Australian coat of arms?

- ◆ A) Kangaroo and Dingo
- ◆ b) Koala and Parrot
- ◆ C) Kangaroo and Emu



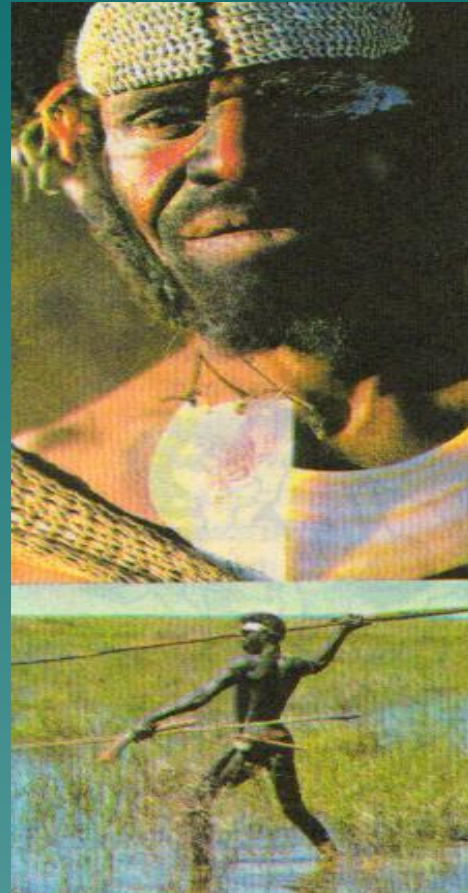
5. Which city is Australia's oldest and largest?

- ◆ A) Sydney
- ◆ B) Melbourne
- ◆ C) Canberra



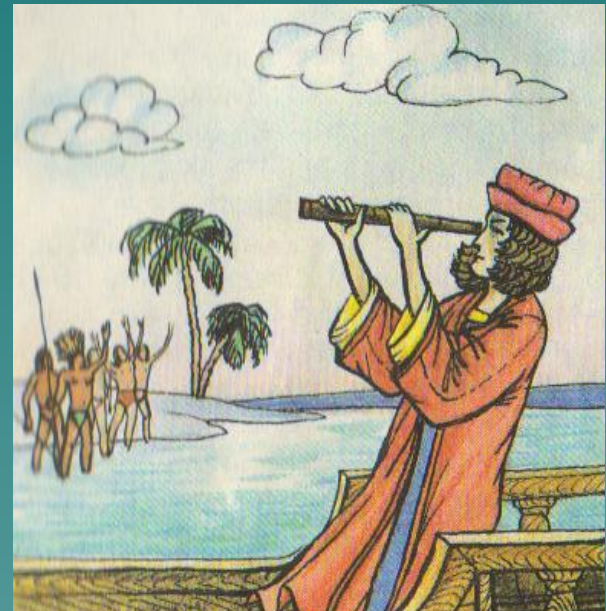
6. Who is the Australian natives?

- ◆ A) Eskimos
- ◆ B) Aborigines
- ◆ C) Indians



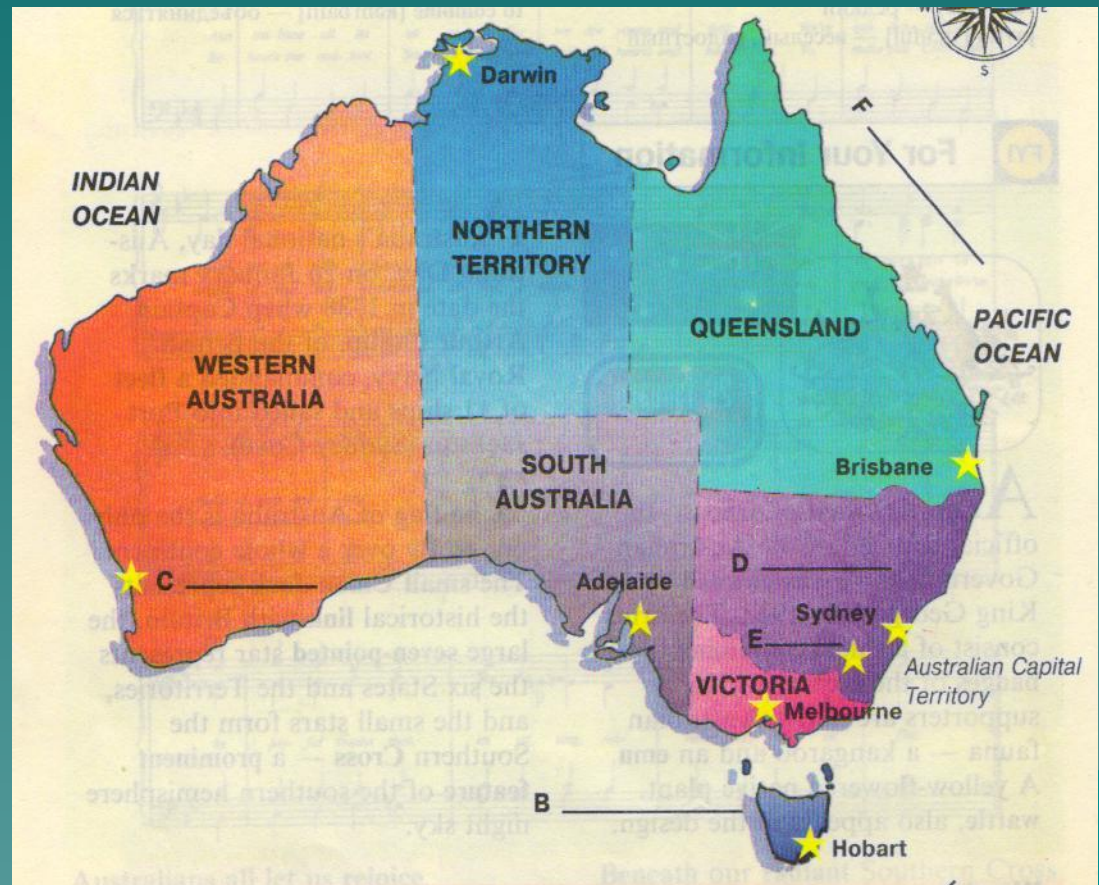
7. Who discovered Australia?

- ◆ A) Christopher Columbus
- ◆ B) Captain Cook
- ◆ C) Lewis and Clark



8. Australia is NOT a(an):

- ◆ A) Country
- ◆ B) Island
- ◆ C) City
- ◆ D) Continent



9. Approximately how many nationalities live in Australia?

- ◆ A) 200
- ◆ B) 20
- ◆ C) 75
- ◆ D) 5



10. What is the official language in Australia?

- ◆ A) French
- ◆ B) German
- ◆ C) English



11. In which season do Australians celebrate Christmas?

- ◆ A) Spring
- ◆ B) Summer
- ◆ C) Autumn
- ◆ D) Winter

