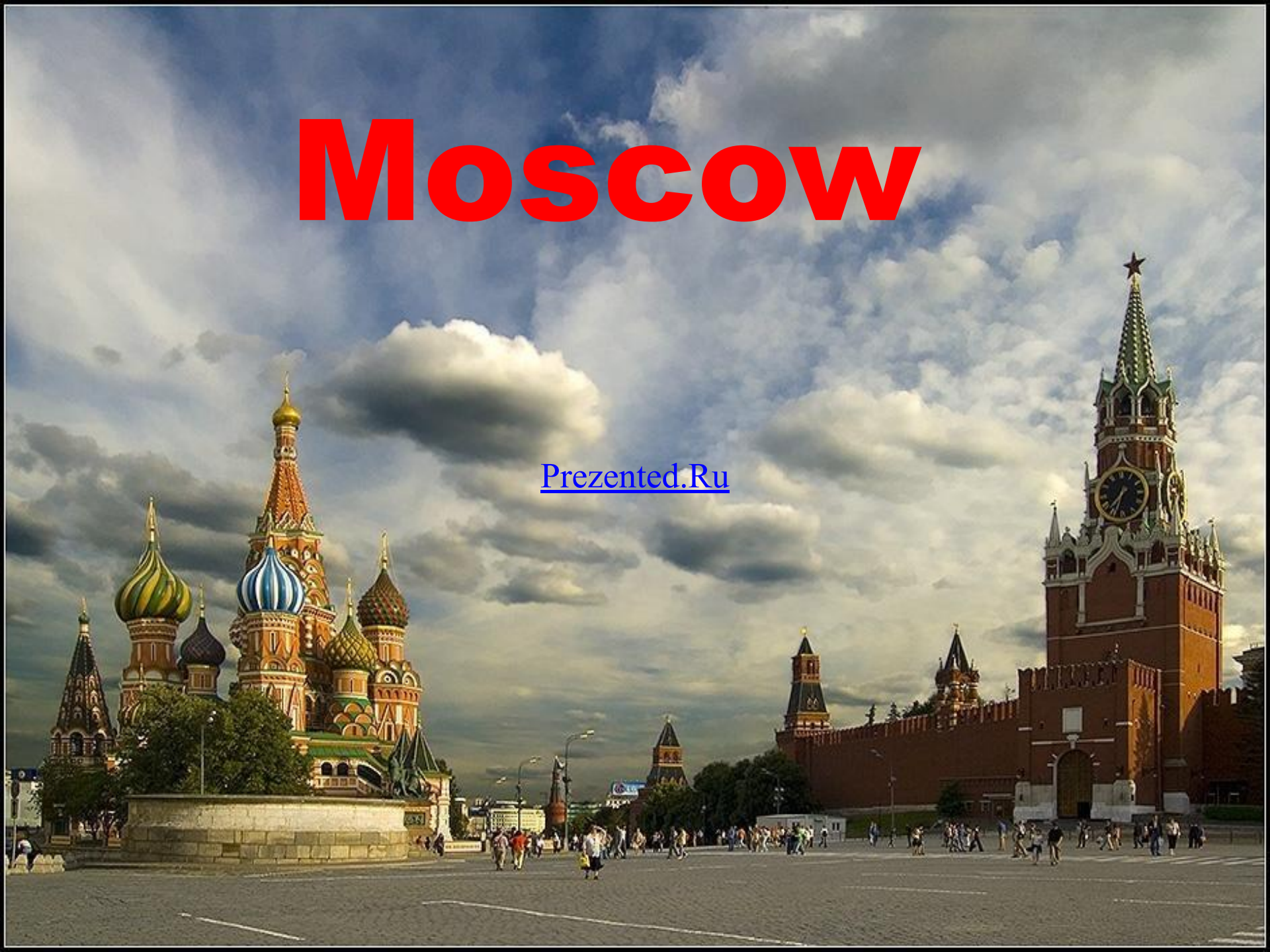


# Moscow

[Prezented.Ru](http://Prezented.Ru)

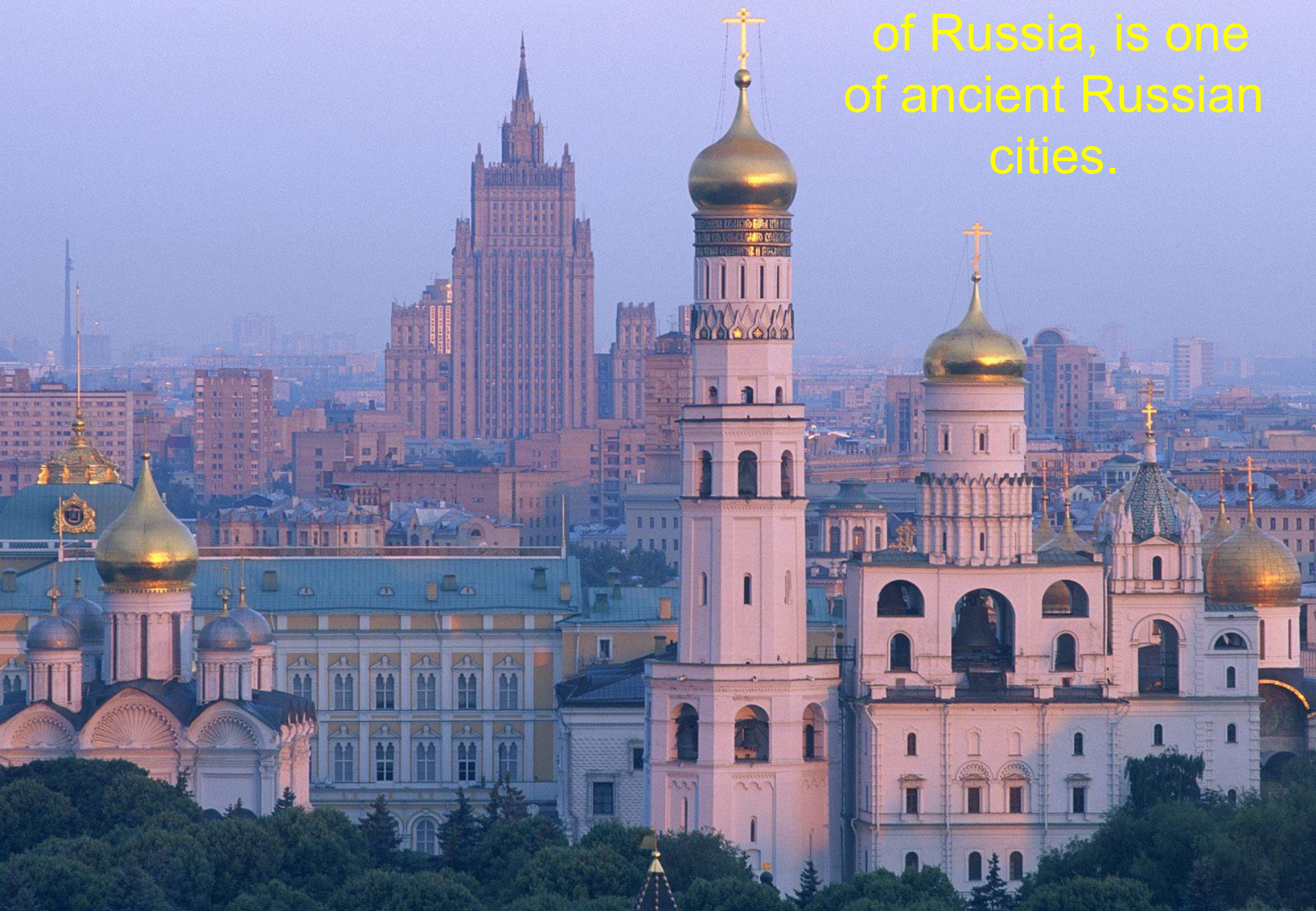


# Answer the questions:

1. What is Moscow famous for?
2. On what river does Moscow stand on?
3. Why is Moscow the seat of the Russian government?
4. What other important institutions are there in Moscow?
5. What is the central square called?
6. What can a visitor see there?
7. What is the most famous theatre called?



Moscow, the capital  
of Russia, is one  
of ancient Russian  
cities.







It was  
founded by  
Prince Yuri  
Dolgoruki  
in 1147.



The city stands on the Moskva River.



Moscow is the country's political, economic, religious, financial, educational and transportation centre.





Its total area is about  
900 sq. km.

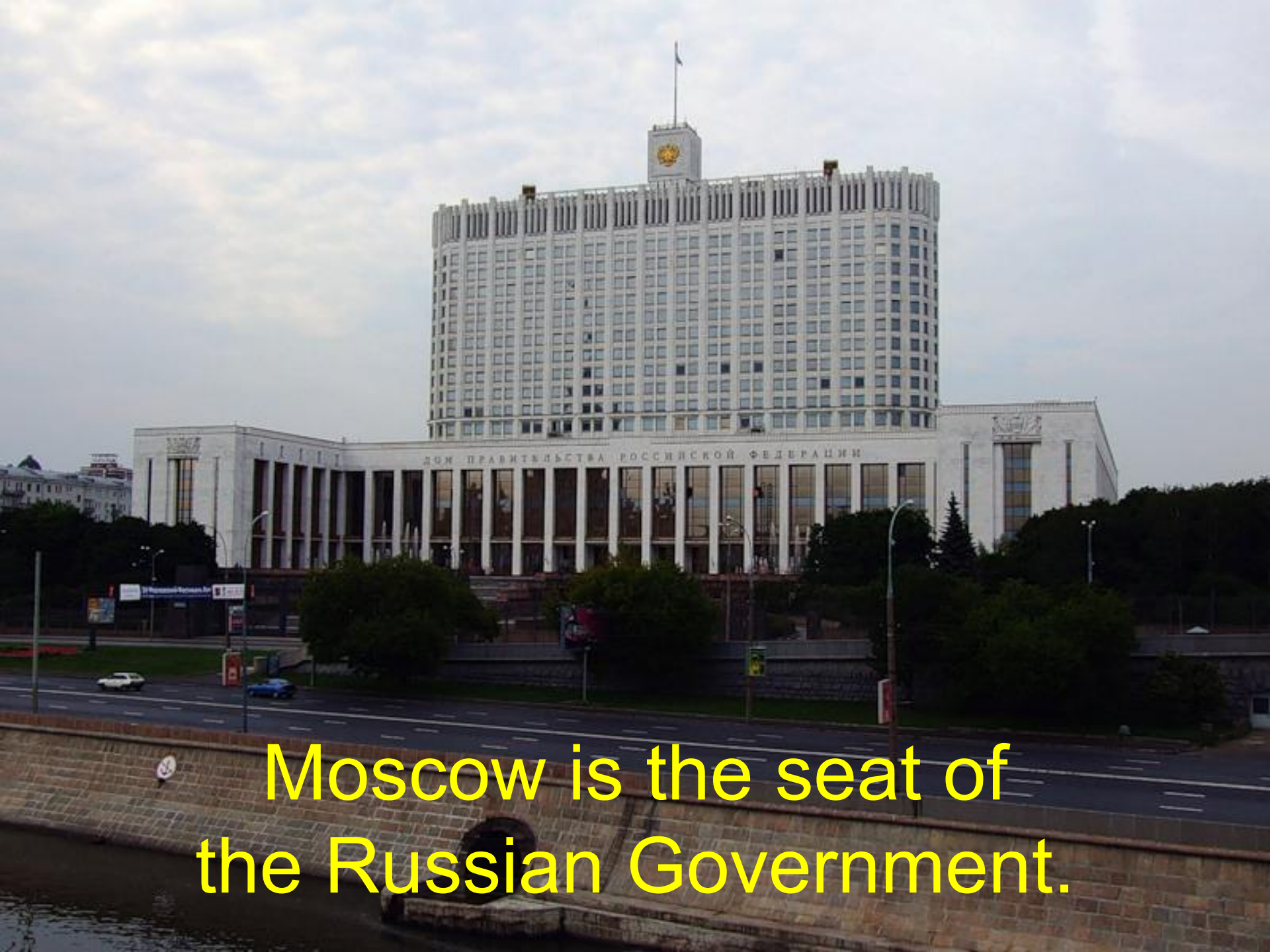




About 11 million people  
live in Moscow.







Moscow is the seat of  
the Russian Government.



It is  
a financial and  
business centre of  
the country.



**Paveletskaya Tower, a business centre**



# The "Moscow International Business Centre"







The Supreme Court  
of Russia  
is a place  
where laws  
are interpreted.



Moscow is one of the most popular tourist destinations.



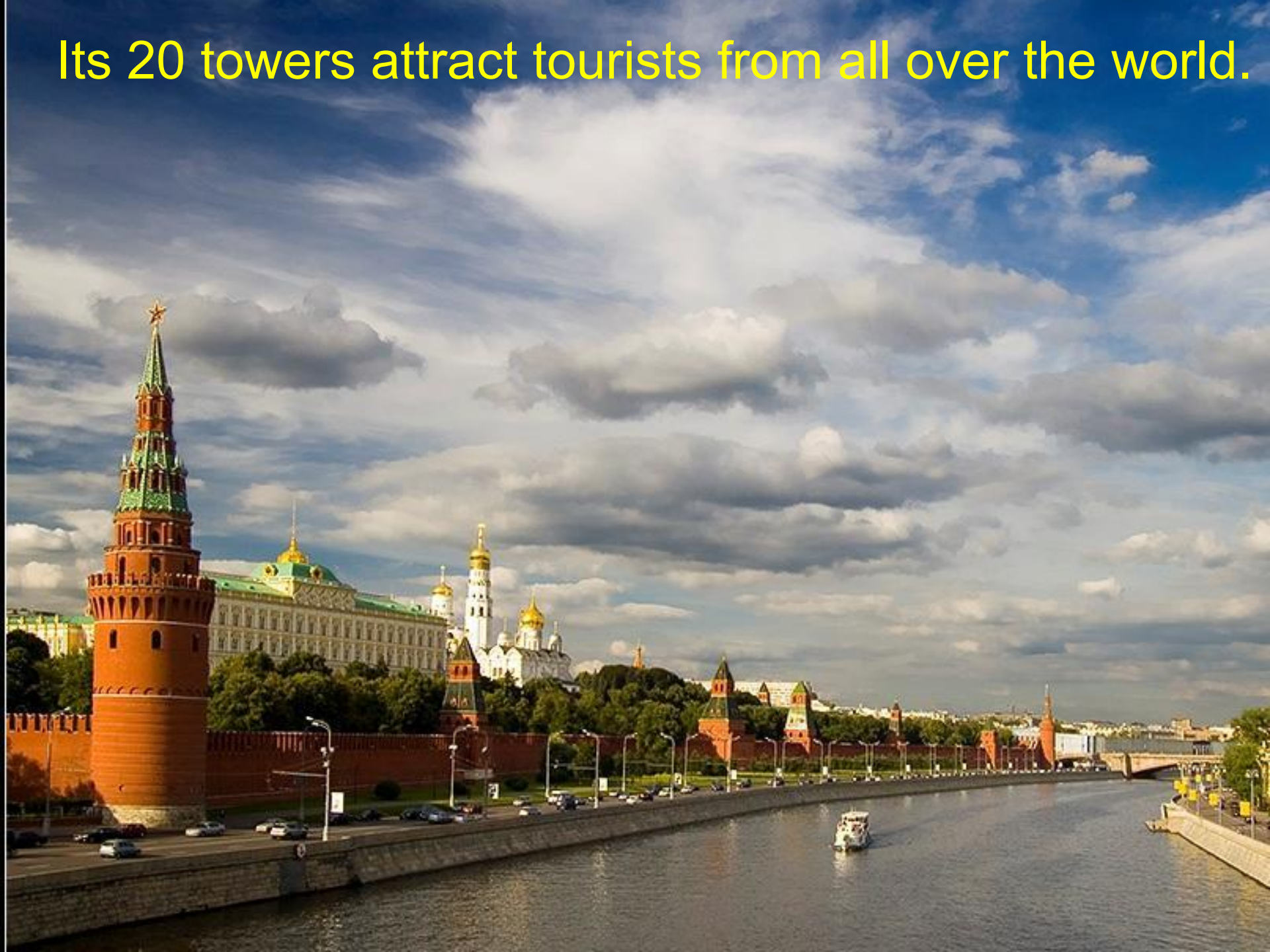




The heart of Moscow is the Kremlin.

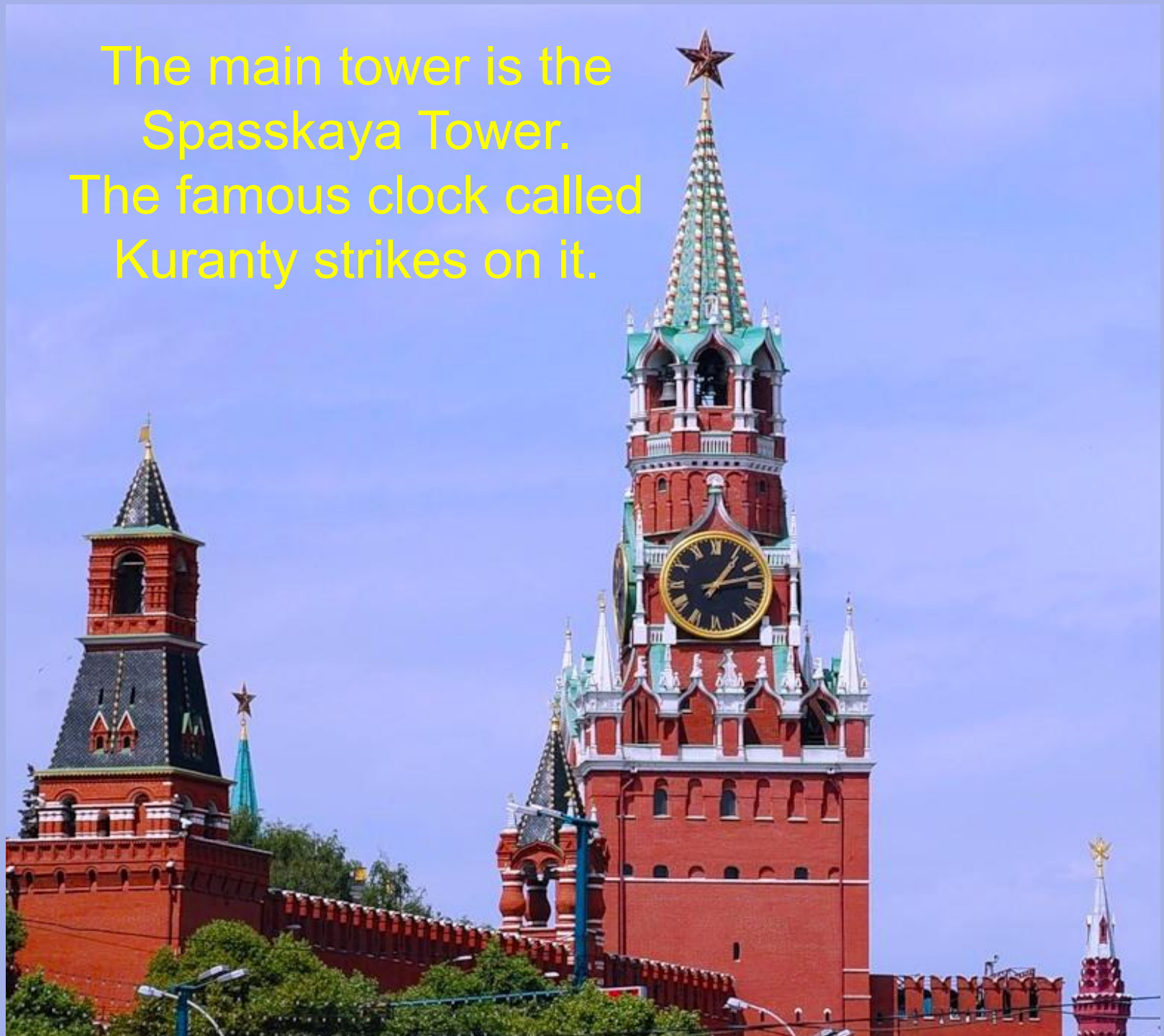


Its 20 towers attract tourists from all over the world.





The main tower is the  
Spasskaya Tower.  
The famous clock called  
Kuranty strikes on it.



On top you can see a ruby star.  
Its diameter is 1.5 metre.





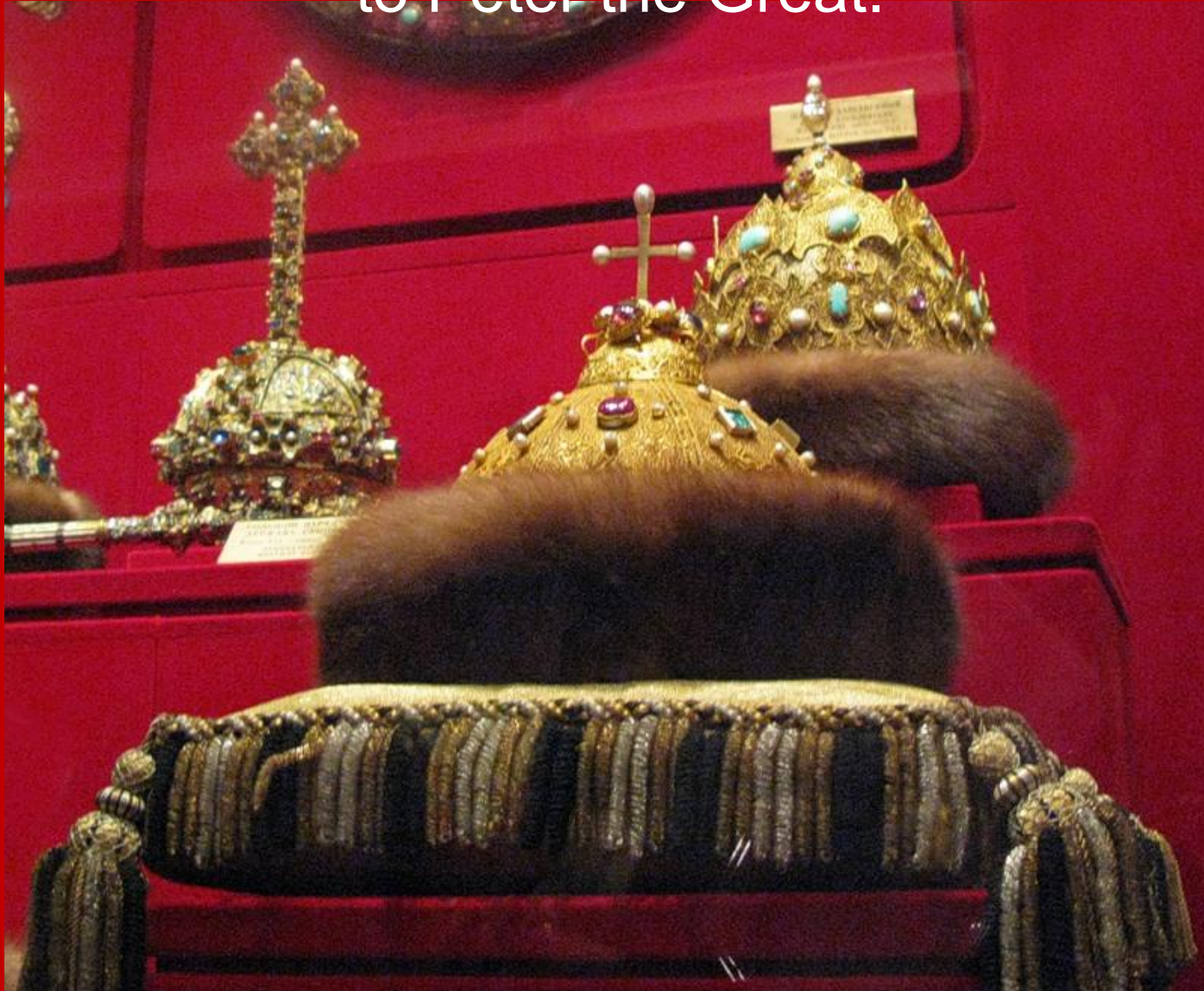
The Kremlin Armoury is one of the oldest museums of Moscow, established in 1808 and located in the Moscow Kremlin.

It contains collections of weapons, jewelry and various household articles of the tsars.





Monomakh's Cap was the crown of all Muscovite Grand Princes and Tsars from Dmitri Donskoi to Peter the Great.





The Tsar Cannon on the territory of the Kremlin  
is 5.34 m long and weighs about 40 tons.  
It was made by A. Chokhov in 1594.



The Tsar Bell is 6.24 m high and weighs about 200 tons. Its diameter is 6.6m. It was made by I.F. Matorin and M.I. Matorin in 1733-1735.





Near the Kremlin Wall there is  
the Unknown Soldier's Grave.

People come here to honour  
the unknown soldiers killed during  
the Second World War.





One of the most famous sights is  
Red Square.





St. Basil's Cathedral was  
erected in 1555- 60 by  
two architects  
Postnik and Barma.



The monument to Minin and  
Pozharski was designed  
by Ivan Martos  
in 1818.

Its height is 8.8 m.





The Moscow State Historical museum of Russia  
was founded in 1872.



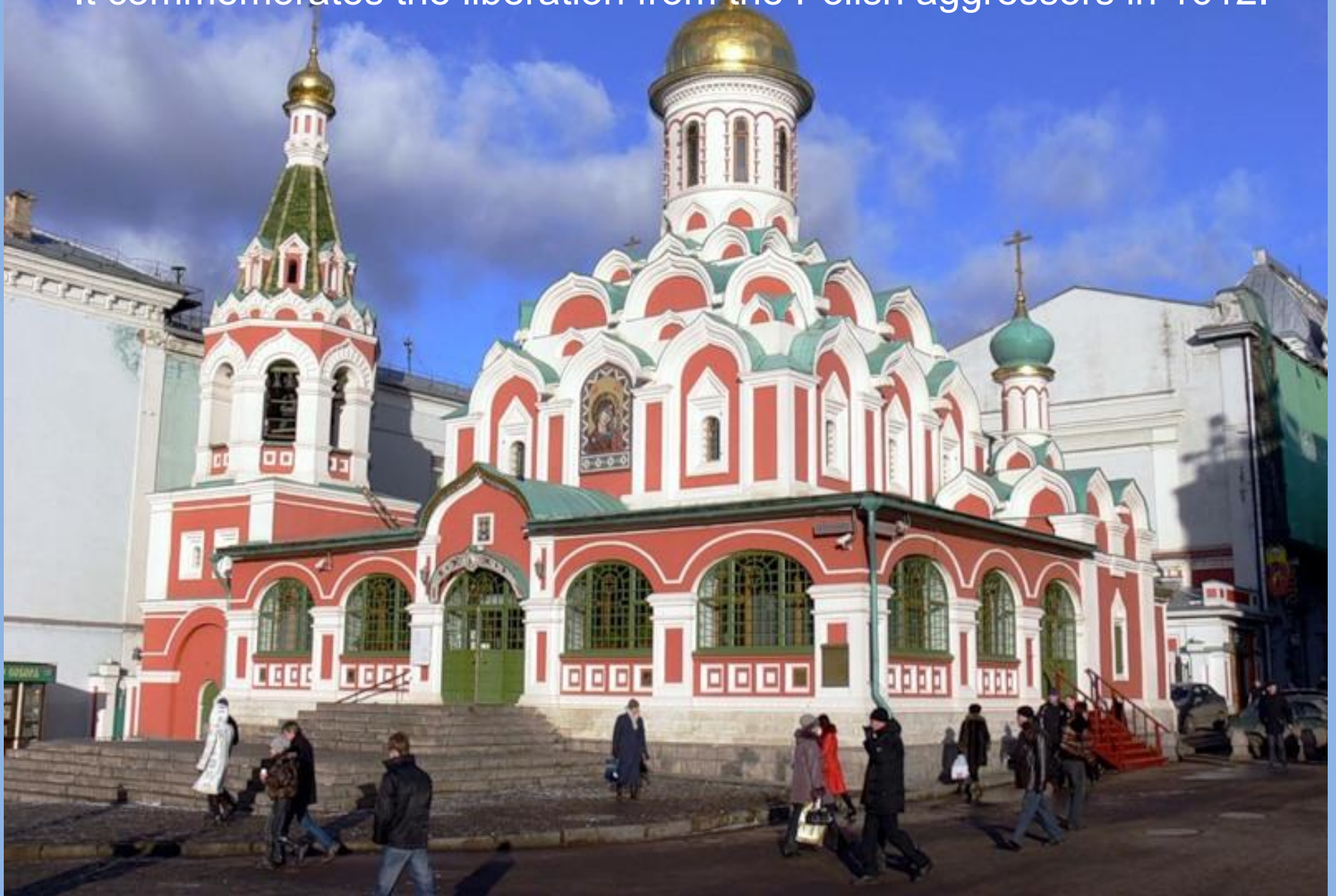




The total  
number of  
objects  
in the  
museum's  
collection  
numbers  
in the millions.



Kazan Cathedral is also located in Red Square.  
It commemorates the liberation from the Polish aggressors in 1612.



You can buy presents for your friends and relatives in GUM right here in Red Square.

