

Princess Diana-candle in the wind

(Принцесса Диана-свеча на ветру)

Скобликовой
Марины Валентиновны
Учителя английского языка
Школы № 455
г.Санкт - Петербург

Contance



DIANA



PRINCESS of WALES



ROYAL DESENT



FAMILY TREE



ENGAGEMENT and MARRIAGE



HOBBIES



QUEEN of HEARTS



QUIZ



CANDLE in the WIND



DIANA



Leave not your weeping as it were
But a rose that fades and dies;
But show a smile to remember her
In the garden where she lies.



Time is too slow for those who wait,
too swift for those who fear,
too long for those who grieve,
too short for those who rejoice,
but for those who love, time is eternity.



Princess Diana - Candle in the wind



**Was born into the British
aristocracy**

**Her motto: God defends the
right**





Lady Diana Spencer was an English princess and the former wife of Charles, Prince of Wales. She was born in 1961, in Norfolk, England. Lady Diana Spencer grew up in Sandringham, England. Diana went to the West Heath boarding school in Kent for four years, but quit when she was 16. After a term at a Swiss finishing school, she ended her formal education and got a job in London working as a nursery school teacher's aide. In February 1981, Charles proposed to Diana, and the couple appeared together in public for the first time. They were married on July 29, 1981, at St. Paul's Cathedral, before a congregation of 2,500. In addition, about 750 million people watched the televised ceremony.



The royal couple had two sons, William, born in 1982 and Harry in 1984. On December 9, 1992, a Buckingham Palace spokesperson announced that Charles and Diana were separating and they were later divorced. By the summer of 1997, Diana was having a much-talked about relationship with Emad (Dodi) al-Fayed, the son of the owner of the famous Harrod's department store in London. In the early morning of August 31, 1997, after leaving the Ritz Hotel in Paris, Diana and Fayed had a fatal car accident. Diana was still alive when doctors reached the scene, but she died a few hours later, at the age of 36.

PRINCESS of WALES



Father's side

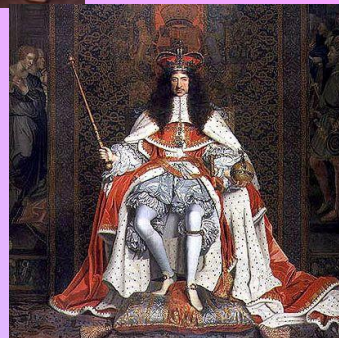
Mother's side



James II



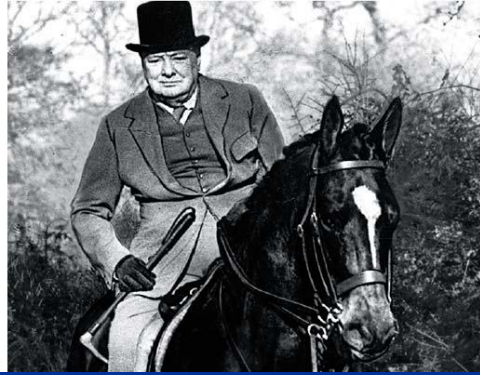
Henry III



Charles II

Frances Work

Frances Ellen Work (October 27, 1857 - January 26, 1947) was an American heiress and socialite. She was a great-grandmother of Diana. She was a prominent figure in the New York City



THE CHURCHILL FAMILY GENEALOGY



Eleanor = Sir John Drake
 |
 Elizabeth = Sir Winston Churchill

by James, Duke of York --- Arabella = Charles Godfrey
 (1648-1730)
 |
 Charlotte Elizabeth

Henrietta, Lady Waldegrave
 James, Duke of Berwick
 Henry, Duke of Albemarle
 Arabella

George, Admiral of the Blue (1654-1710) Charles, General of Foot (1656-1714) = Mary

Frances = Richard Jennings
 |
 Sarah Jennings (1660-1744) Frances = Richard Talbot, Duke of Tyrconnel

John, Duke of Marlborough
 (1650-1722)

Henrietta, Countess of Godolphin (1681-1733) = Francis, 2nd Earl of Godolphin
 Anne, Countess of Sunderland (1683-1716) = Charles, 3rd Earl of Sunderland
 John, Marquess of Blandford (1686-1703)
 Elizabeth, Countess of Bridgewater (1687-1714) = Scroop, 4th Earl of Bridgewater
 Mary, Duchess of Montagu (1689-1751) = John, 2nd Duke of Montagu
 Charles, (1690-1692)

William, Marquess of Blandford (c.1700-1731)

Robert, 4th Earl of Sunderland (1701-1729)
 Anne Spencer, (1702-1769) = William, 1st Viscount Bateman
 Charles Spencer, 3rd Duke of Marlborough (1706-1758) = Elizabeth Trevor
 John Spencer, (1708-1746) = Caroline Carteret
 Diana Spencer, (1710-1735) = John, 4th Duke of Bedford



FAMILY TREE



Granny

Harry

Father

William

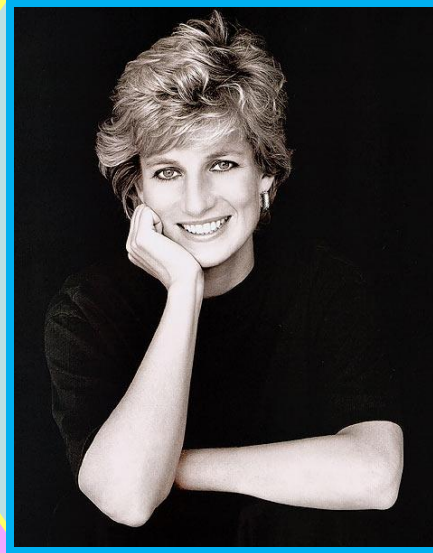
Mother

Husband

Sister

Sister

Brother



Grandmother: Ruth, Lady Fermoy

Diana's maternal grandmother, Ruth, Lady Fermoy, was a long-term friend and lady in waiting to Queen Elizabeth The Queen Mother

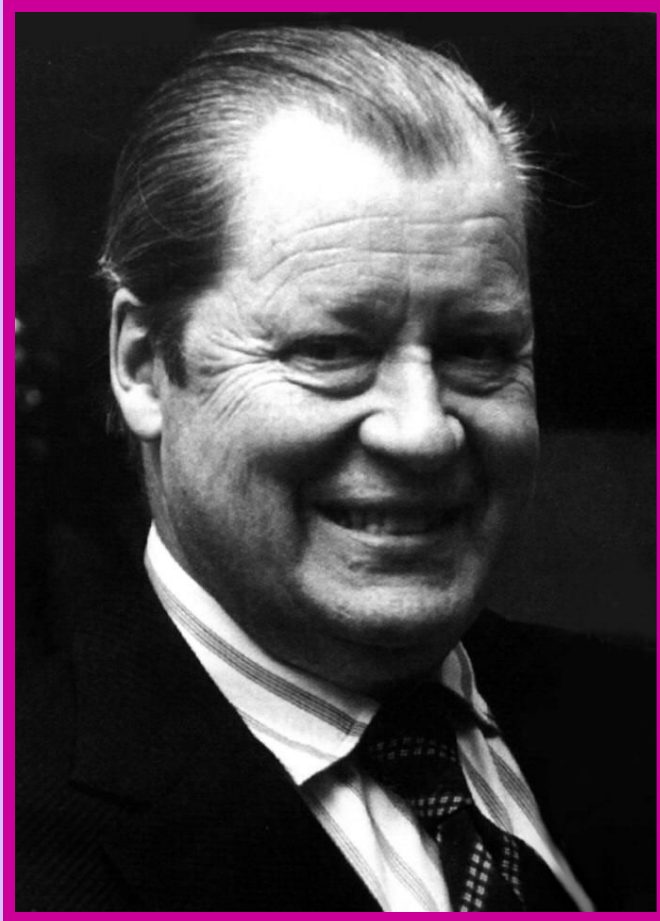


Born	Frances Ruth Burke Roche 20 January 1936) Park House, Sandringham Park House, Sandringham, Norfolk
Died	3 June 2004 (aged 68) Seil , Scotland
Nationality	British
Title	The Honourable Frances Ruth Burke Shand Kydd
Spouse	Edward John Spencer, 8th Earl Spencer (1954-1969) Peter Shand Kydd (1969-1990)
Children	Elizabeth Sarah Lavinia Spencer (b.1955) Cynthia Jane Spencer (b.1957) John Spencer (1960) Diana Frances Spencer (1961-1997) Charles Edward Maurice Spencer, 9th Earl Spencer (b.1964) Edmund Roche, 4th Baron

Mother: Frances Spencer



Father: Edward John Spencer



Born	Edward John Spencer 24 January 1924 London, England
Died	29 March 1992 (aged 68) Humana Hospital, Wellington, London
Nationality	British
Education	Eton College Royal Agricultural College
Title	8th Earl Spencer
Predecessor	7th Earl Spencer
Successor	9th Earl Sepncer
Spouse	Frances Burke Roche (1954-1969) Raine, Countess of Dartmouth (1976-1992)
Children	Elizabeth Sarah Lavinia Spencer (b.1955) Cynthia Jane Spencer (b.1957) John Spencer (1960) Diana Frances Spencer (1961-1997) Charles Edward Maurice Spencer (b.1964)
Parents	Albert Edward John Spencer (1892-1975) Lady Cynthia Elinor Beatrix

Lady Sarah Spencer



Born

The Honourable Elizabeth Sarah Lavinia Spencer
19 March 19 March **1955**)
(age 53)

Residence

Stoke Rochford Stoke Rochford, **Lincolnshire**

Nationality

British

Education

Riddlesworth Hall
West Heath

Title

The Lady Elizabeth Sarah Lavinia Spencer

Spouse

Neil Edmund McCorquodale
(1980-)

Children

Emily Jane McCorquodale
(b.1983)
George Edmund McCorquodale
(b.1984)
Celia Rose McCorquodale
(b.1989)

Parents

Edward John Spencer, 8th Earl Spencer (1924-1992)
Frances Burke Roche
(1936-2004)

Relatives

Diana, Princess of Wales
(1961-1997)

Born	The Honourable Cynthia Jane Spencer 11 February 1957 (age 51)
Nationality	British
Education	West Heath Girls' School
Title	Baroness Fellowes
Spouse	Robert Fellowes, Baron Fellowes (1978-)
Children	Laura Jane Fellowes (b. 1980) Alexander Robert Fellowes (b.1983) Eleanor Ruth Fellowes (b.1985)
Parents	John Spencer, 8th Earl Spencer (1924-1992) Frances Burke Roche (1936-2004)
Relatives	Diana, Princess of Wales (1961-1997)

Lady Jane Spencer



Born

Charles Edward Maurice Spencer
[20 May](#)20 May [1964](#)) (age 44)

Education

[Eton College](#)
[Magdalen College, Oxford](#)

Title

9th Earl Spencer

Predecessor

[8th Earl Spencer](#)

Spouse

Victoria Lockwood
(1989-1997)
Caroline Freud (née Hutton)
(2002 - 2007)

Children

Lady Kitty Eleanor Spencer
(b.1990)
Lady Eliza Victoria Spencer
(b.1992)
Lady (Katya) Amelia Spencer
(b.1992)
[Louis Frederick John Spencer,
Viscount Althorp](#) (b.1994)
The Honourable Edmund Charles
Spencer (b.2003)
Lady Lara Spencer (b.2006)

Parents

[John Spencer, 8th Earl
Spencer](#) (1924-1992)
[Frances Burke Roche](#)
(1936-2004)

Relatives

[Diana, Princess of Wales](#)
(1961-1997)

Brother: Charles Spencer



Spouse

[Lady Diana Spencer](#)
(1981—1996)
[Camilla Shand](#) (2005—)

Issue

[Prince William of Wales](#)
[Prince Henry of Wales](#)

Full name

Charles Philip Arthur George

Titles and styles

HRH The Prince of Wales
HRH The Duke of Rothesay
HRH The Duke of Cornwall
HRH Prince Charles of Edinburgh

[Royal house](#)

[House of Windsor](#)

Father

[Philip, Duke of Edinburgh](#)

Mother

[Elizabeth II](#)

Born

[14 November](#)14
November [1948](#))
(age 59)
[Buckingham](#)
[Palace](#)Buckingham
Palace, [London](#)

Baptised

[15 December](#)15
December [1948](#)
[Buckingham](#)



Full name

William Arthur Philip Louis

Titles and styles

HRH Prince William of Wales

Royal house

House of Windsor

Father

Charles, Prince of Wales

Mother

Diana, Princess of Wales

Born

21 June 21 June 1982

) (age 26)

St Mary's Hospital St Mary's Hospital, London

Baptised

4 August 4 August 1982

Buckingham Palace Buckingham Palace, London

Occupation

Lieutenant Lieutenant, Blues and Royals, Flying Officer R.A.F.



Full name

Henry Charles Albert David

Titles and styles

HRH Prince Henry of Wales

Royal house

House of Windsor

Father

Charles, Prince of Wales

Mother

Diana, Princess of Wales

Born

15 September15
September 1984)
(age 23)
St Mary's HospitalSt
Mary's Hospital, London

Baptised

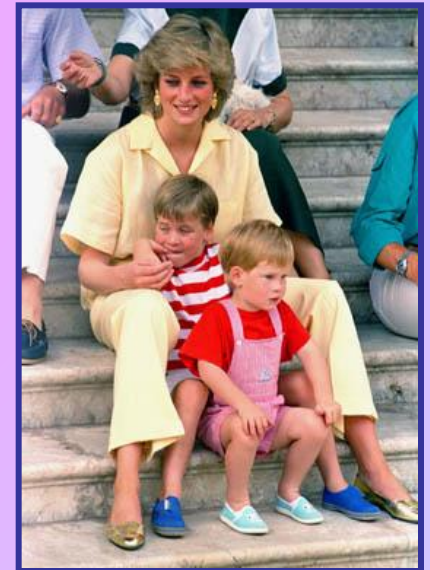
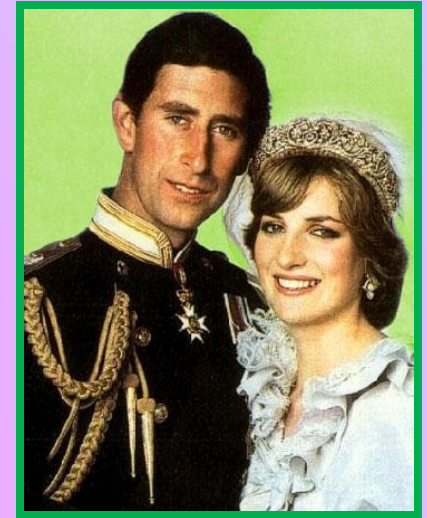
21 December21
December 1984
St. George's ChapelSt.
George's Chapel,
Windsor Castle

Occupation

LieutenantLieutenant,
Blues and Royals



ENGAGEMENT and MARRIAGE



HOBBIES



Reading

Dancing

Music



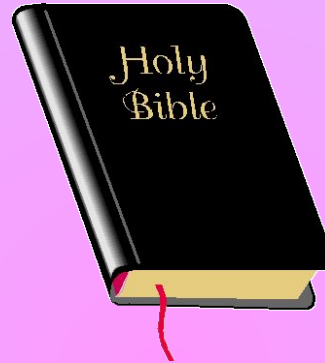
DIANA'S FAVOURITE WRITERS and Books



Francisc Assizski



Lord Byron

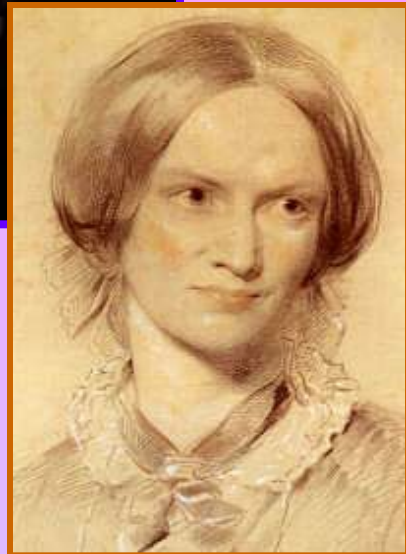


Daniela Steel



Barbara Cartlend

Charlotte Bronte



Jane Ostene



DREAM DANCE



John Travolta and his dance with Princess Diana



In 1985 Prince Charles and Princess Diana visited the USA. During this trip a gala dinner was held for them in Washington, hosted by President Reagan and his wife Nancy.



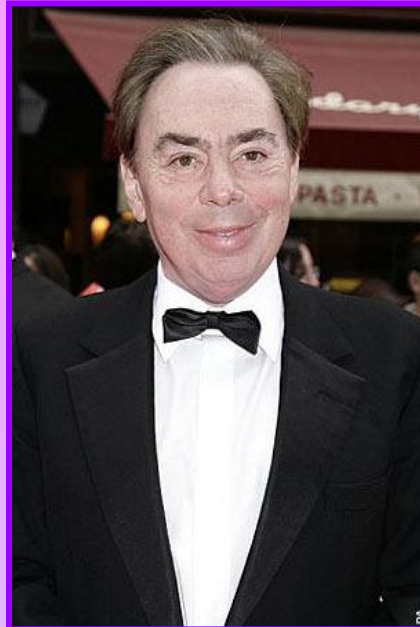
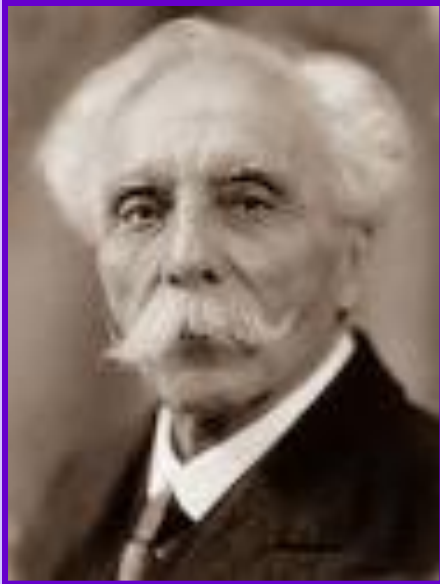


During the gala, First Lady Nancy Reagan took John Travolta aside and informed him that Princess Diana wanted a dance. It took some courage, but Travolta went for it, asking her to dance. Princess Diana looked particularly good in her midnight blue velvet dress and sapphire and diamond chocker.

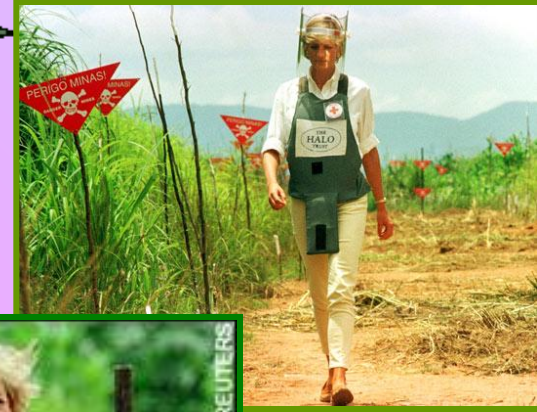
Travolta's words of encouragement to a nervous Princess Di were, 'We're good. I can do this'.



DIANA'S FAVOURITE COMPOSES and SINGERS



QUEEN of HEARTS



QUIZ

1. What was Princess Diana's maiden name ?

Mountbatten

Spencer

Churchill

Habnsburg

2. What was Princess Diana's royal title before she married Prince Charles ?

Lady

Countess

Duchess

Marchioness

3. Princess Diana's father holds what royal title ?

Duke

Earl

Baron

Prince

4. In interview, Princess Diana admitted to suffering from what affliction ?

Bi-polar disorder

Kleptomania

Bulimia

Dyslexia

5. What woman did Princess Diana nickname
“ Rottweiler”?

Camilla Parker-Bowles

Queen Elizabeth II

The Queen Mother

Barbara Walters

6. After Princess Diana divorced Prince Charles, what was her royal title?

Lady

Duchess

Princess of Wales

Countess

7. Princess Diana died with her boyfriend Dodi al-Fayed, whose father owned what department store?

Macy's

Spencer & Marks

Harrods

K-Mart

8. After her death, Elton John changed the lyrics of what song and dedicated it to Princess Diana?

Philadelphia Freedom

Candle in the wind

Funeral for a Friend

Rocket Man

9. Princess Diana was buried with rosary beads, a gift from whom?

Pop John Paul II

Archbishop of Canterbury

Mother Teresa

Rev. Billy Graham





Candle in the Wind

Goodbye, England's rose;
may you ever grow in our hearts.
You were the grace that placed itself
where lives were torn apart.

You called out to our country,
and you whispered to those in pain.
Now you belong to heaven,
and the stars spell out your name.

And it seems to me you lived your life
like a candle in the wind:
never fading with the sunset
when the rain set in.

And your footsteps will always fall here,
along England's greenest hills;
your candle's burned out long before
your legend ever will.

Loveliness we've lost;
these empty days without your smile.
This torch we'll always carry
for our nation's golden child.

And even though we try,
the truth brings us to tears;
all our words cannot express
the joy you brought us through the years.

Goodbye England's rose,
from a country lost without your soul,
who'll miss the wings of your compassion
more than you'll ever know.

Lyrics revised and sung by Elton John

