

*** Расчет экспортной,
импортной и
внешнеторговой квоты за
период с 2000 по 2012
года на примере Новой
Зеландии и ЮАР**

Подготовили: Сакович М., Смыченко И.,
Трусова Е., Хомич К. и Ячменева О.

**1. Поиск данных на сайте ВТО.
<http://stat.wto.org>**



- 1 ВЫБОР
 - 2 Просматривать данные
 - 3 СКАЧАТЬ
- ТЕХНИЧЕСКОЕ ОПИСАНИЕ
- Статистическая база данных
- Статистика шлюза
- Контакты Статистика
- Тарифы Контакты

[Главная](#) > [Ресурсы](#) > [Статистика](#) > [Статистика базы данных](#) > [Временные ряды](#)

Временные ряды

Этот сайт предоставляет для поиска базу данных о международной торговле товарами и коммерческими услугами. Данные представлены в зависимости от продукта и определения региональных групп указанных в технических примечаниях. Начните с нажатия "Выбор" в левой колонке.

- 1 SELECTION
 - Subject
 - Reporter
 - Partner
 - Trade Flow
 - Unit
 - Year
- 2 VIEW DATA
- 3 DOWNLOAD

Home > Resources > Statistics > Statistics database > Time series

Time Series - Subject selection

Select one of the data sets available from the dropdown list. Then, select corresponding indicator(s).

AVAILABLE DATA SETS

Total merchandise trade

Total merchandise exports and imports, by region and selected economy, 1948-2012.

AVAILABLE INDICATORS

[Empty list box for available indicators]

SELECTED INDICATORS

Total merchandise

- ADD
- REMOVE
- ADD ALL
- REMOVE ALL

Continue

- TECHNICAL NOTES
- Statistics Database
- Statistics gateway
- Contact Statistics
- Contact Tariffs

- 1 SELECTION
 - ✓ Subject
 - ▶ Reporter
 - Partner
 - Trade Flow
 - ✓ Unit
 - Year
- 2 VIEW DATA
- 3 DOWNLOAD

- TECHNICAL NOTES
- Statistics Database
- Statistics gateway
- Contact Statistics
- Contact Tariffs

Home > Resources > Statistics > Statistics database > Time series

Time Series - Reporter selection

You can select either individual reporter(s) or group(s) of reporters. Refer to the technical notes for the composition of groups of reporters.

GROUP
All individual reporters (Incl. world)

- AVAILABLE REPORTERS**
- Slovenia
 - Solomon Islands
 - Spain
 - Sri Lanka
 - Sudan
 - Suriname
 - Swaziland
 - Sweden
 - Switzerland
 - Syrian Arab Republic

ADD
REMOVE
ADD ALL
REMOVE ALL

- SELECTED REPORTERS**
- New Zealand
 - South Africa

Continue ▶

- 1 SELECTION
 - ✓ Subject
 - ✓ Reporter
 - ▶ Partner
 - Trade Flow
 - ✓ Unit
 - Year
- 2 VIEW DATA
- 3 DOWNLOAD

Home > Resources > Statistics > Statistics database > Time series

Time Series - Partner selection

When European Union is available for selection, it is valid only for EU as a reporter; except for the Network and the Regional Integration Agreements data sets where other reporters can also be selected.

When available for selection, Extra-trade as a partner is valid for regional integration agreements as reporters.

| AVAILABLE PARTNERS | | SELECTED PARTNERS |
|---------------------|--|-------------------|
| European Union (15) | <input type="button" value="ADD"/> <input type="button" value="REMOVE"/> <input type="button" value="ADD ALL"/> <input type="button" value="REMOVE ALL"/> | World |
| European Union (25) | | |
| European Union (27) | | |
| Extra-trade | | |

Continue ▶

- Statistics Database
- Statistics gateway
- Contact Statistics
- Contact Tariffs

- 1 SELECTION
 - ✓ Subject
 - ✓ Reporter
 - ✓ Partner
 - ▶ Trade Flow
 - ✓ Unit
 - Year
- 2 VIEW DATA
- 3 DOWNLOAD

Home > Resources > Statistics > Statistics database > Time series

Time Series - Trade flow selection

Re-exports, when available for selection, are valid only for Singapore and Hong-Kong, China as reporters.

| AVAILABLE TRADE FLOWS | | SELECTED TRADE FLOWS |
|-----------------------|--|----------------------|
| Domestic exports | <input type="button" value="ADD"/> <input type="button" value="REMOVE"/> <input type="button" value="ADD ALL"/> <input type="button" value="REMOVE ALL"/> | Exports |
| Re-exports | | Imports |
| Retained imports | | |

Continue ▶

- Statistics Database
- Statistics gateway
- Contact Statistics
- Contact Tariffs



- 1 SELECTION
 - ✓ Subject
 - ✓ Reporter
 - ✓ Partner
 - ✓ Trade Flow
 - ✓ Unit
 - ▶ Year
- 2 VIEW DATA
- 3 DOWNLOAD
- TECHNICAL NOTES

Time Series - Year selection

| AVAILABLE YEARS |
|-----------------|
| 1999 |
| 1998 |
| 1997 |
| 1996 |
| 1995 |
| 1994 |
| 1993 |
| 1992 |
| 1991 |
| 1990 |

- ADD
- REMOVE
- ADD ALL
- REMOVE ALL

| SELECTED YEARS |
|----------------|
| 2012 |
| 2011 |
| 2010 |
| 2009 |
| 2008 |
| 2007 |
| 2006 |
| 2005 |
| 2004 |
| 2003 |

Home > Resources > Statistics > Statistics database > Time series

Continue ▶

- Statistics Database
- Statistics gateway
- Contact Statistics
- Contact Tariffs

javascript: __doPostBack('Bottombar\$1czGeneralContinue','')

- 1 SELECTION
 - ✓ Subject
 - ✓ Reporter
 - ✓ Partner
 - ✓ Trade Flow
 - ✓ Unit
 - ✓ Year
- 2 VIEW DATA
- 3 DOWNLOAD

[Home](#) > [Resources](#) > [Statistics](#) > [Statistics database](#) > [Time series](#)

View printable version Years Page 1 / 1

Subject: Total merchandise trade **Unit:** US dollar at current prices (Millions) [Time Series Notes](#)

| Reporter | Flow | Indicator | Partner | 2000 | 2001 | 2002 |
|--------------|---------|-------------------|---------|-------|-------|-------|
| New Zealand | Exports | Total merchandise | World | 13272 | 13730 | 14383 |
| New Zealand | Imports | Total merchandise | World | 13906 | 13308 | 15047 |
| South Africa | Exports | Total merchandise | World | 29983 | 29258 | 29723 |
| South Africa | Imports | Total merchandise | World | 29695 | 28248 | 29267 |

TECHNICAL NOTES

- Value flags
- Break in series
 - Coverage difference
 - Estimated value

- [Statistics Database](#)
- [Statistics gateway](#)
- [Contact Statistics](#)

1 SELECTION

- ✓ Subject
- ✓ Reporter
- ✓ Partner
- ✓ Trade Flow
- ✓ Unit
- ✓ Year

2 VIEW DATA

3 DOWNLOAD

TECHNICAL NOTES

View printable version Years Page 1 / 1

Subject: Total merchandise trade Unit: US dollar at current prices (Millions) [Click to move to previous years](#) [Time Series Notes](#)

| Reporter | Flow | Indicator | Partner | 2003 | 2004 | 2005 | 2006 | 2007 |
|--------------|---------|-------------------|---------|-------|-------|-------|-------|-------|
| New Zealand | Exports | Total merchandise | World | 16527 | 20344 | 21730 | 22409 | 26943 |
| New Zealand | Imports | Total merchandise | World | 18559 | 23195 | 26219 | 26424 | 30882 |
| South Africa | Exports | Total merchandise | World | 36482 | 46146 | 51626 | 58175 | 69784 |
| South Africa | Imports | Total merchandise | World | 39748 | 53466 | 62304 | 78715 | 88450 |

Value flags

- Break in series
- Coverage difference
- Estimated value

Statistics Database
 Statistics gateway
 Contact Statistics

- 1 SELECTION
 - ✓ Subject
 - ✓ Reporter
 - ✓ Partner
 - ✓ Trade Flow
 - ✓ Unit
 - ✓ Year
 - 2 VIEW DATA
 - 3 DOWNLOAD
- TECHNICAL NOTES

[Home](#) > [Resources](#) > [Statistics](#) > [Statistics database](#) > [Time series](#)

View printable version ◀◀ Years Page 1 / 1

Subject: Total merchandise trade **Unit:** US dollar at current prices (Millions) [Time Series Notes](#)

| Reporter | Flow | Indicator | Partner | 2008 | 2009 | 2010 | 2011 | 2012 |
|--------------|---------|-------------------|---------|--------|-------|-------|--------|--------|
| New Zealand | Exports | Total merchandise | World | 30580 | 24933 | 31396 | 37669 | 37305 |
| New Zealand | Imports | Total merchandise | World | 34369 | 25574 | 30617 | 37105 | 38254 |
| South Africa | Exports | Total merchandise | World | 80782 | 61677 | 80892 | 98047 | 87256 |
| South Africa | Imports | Total merchandise | World | 101640 | 74054 | 94226 | 121606 | 124245 |

- Value flags
- Break in series
 - Coverage difference
 - Estimated value

[Statistics Database](#)
[Statistics gateway](#)
[Contact Statistics](#)

**2. Поиск данных на сайте UnctadStat
<http://unctadstat.unctad.org>**



| Папки | Название | Дата (YYYY-MM-DD) |
|--|--------------------|-------------------|
| Международная торговля товарами и услугами | Национальные счета | |
| Экономические тенденции | Платежный баланс | |
| Прямые иностранные капиталовложения | Курсы валют | |
| Внешние финансовые ресурсы | Темпы инфляции | |
| Населения и рабочей силы | | |
| Товары | | |
| Информационная экономика | | |
| Креативная экономика | | |
| Морской транспорт | | |



| Folders | Name | Date (yyyy-mm-dd) |
|---|--|----------------------|
| International trade in goods and services | Nominal and real GDP, total and per capita, annual, 1970-2012 | 2013-07-24, 15:02:58 |
| Economic trends | Real GDP growth rates, total and per capita, annual, 1970-2012 | 2013-07-24, 15:02:58 |
| National accounts | GDP by type of expenditure and Value Added by kind of economic activity, annual, 1970-2011 | 2013-07-24, 15:02:58 |
| Balance of payments | Nominal GNI, total and per capita, annual, 1970-2011 | 2013-07-24, 15:02:58 |
| Exchange rates | | |
| Inflation rates | | |
| Foreign direct investment | | |
| External financial resources | | |
| Population and labour force | | |
| Commodities | | |
| Information economy | | |
| Creative economy | | |
| Maritime transport | | |



Nominal and real GDP, total and per capita, annual, 1970-2012

Other: MEASURE - US Dollars at current prices and current exchange rates in millions

| YEAR | 1970 | 1971 | 1972 | 1973 | 1974 | 1975 | 1976 | 1977 | 1978 | 1979 | 1980 | 1981 | 1982 | 1983 | 1984 | 1985 | 1986 | 1987 |
|------------------------------|-----------|-----------|-----------|-----------|-----------|-----------|-----------|-----------|-----------|------------|------------|------------|------------|------------|------------|------------|------------|------------|
| ECONOMY | ↑↓ | ↑↓ | ↑↓ | ↑↓ | ↑↓ | ↑↓ | ↑↓ | ↑↓ | ↑↓ | ↑↓ | ↑↓ | ↑↓ | ↑↓ | ↑↓ | ↑↓ | ↑↓ | ↑↓ | ↑↓ |
| Individual economies | - | - | - | - | - | - | - | - | - | - | - | - | - | - | - | - | - | - |
| World | 3,294,755 | 3,625,577 | 4,175,665 | 5,090,568 | 5,756,399 | 6,436,931 | 6,950,491 | 7,823,549 | 9,274,470 | 10,673,712 | 11,903,792 | 12,161,581 | 12,063,506 | 12,370,832 | 12,734,359 | 13,077,760 | 15,152,721 | 17,177,650 |
| Developing economies | 554,852 | 610,797 | 686,033 | 861,233 | 1,114,836 | 1,241,204 | 1,374,933 | 1,564,722 | 1,797,811 | 2,166,759 | 2,570,539 | 2,769,675 | 2,682,955 | 2,633,060 | 2,687,119 | 2,586,833 | 2,599,783 | 2,845,292 |
| Transition economies | 450,313 | 473,793 | 534,766 | 641,805 | 648,928 | 721,955 | 728,875 | 786,950 | 897,421 | 972,272 | 1,012,216 | 978,090 | 1,025,138 | 1,059,835 | 1,009,366 | 989,053 | 929,573 | 883,463 |
| Developed economies | 2,289,589 | 2,540,987 | 2,954,866 | 3,587,530 | 3,992,635 | 4,473,772 | 4,846,683 | 5,471,878 | 6,579,238 | 7,534,681 | 8,321,038 | 8,413,816 | 8,355,414 | 8,677,938 | 9,037,873 | 9,501,875 | 11,623,365 | 13,448,895 |
| Developing economies: Africa | 90,542 | 100,167 | 113,539 | 141,078 | 184,279 | 205,009 | 225,674 | 257,482 | 296,394 | 346,005 | 434,114 | 411,675 | 400,968 | 410,006 | 404,980 | 398,746 | 385,205 | 404,528 |
| Eastern Africa | 17,159 | 18,802 | 21,419 | 25,466 | 29,799 | 32,100 | 33,256 | 36,511 | 40,516 | 45,613 | 51,672 | 53,859 | 55,670 | 54,888 | 54,007 | 56,658 | 58,045 | 57,068 |
| Middle Africa | 8,415 | 9,223 | 10,218 | 13,130 | 15,987 | 17,279 | 18,186 | 20,513 | 25,244 | 28,348 | 33,209 | 30,694 | 30,476 | 29,281 | 26,886 | 28,628 | 30,607 | 32,250 |
| Northern Africa | 24,819 | 26,814 | 32,073 | 38,963 | 53,734 | 59,974 | 70,210 | 83,718 | 96,888 | 108,580 | 137,692 | 125,231 | 125,666 | 129,121 | 133,512 | 141,775 | 149,864 | 157,671 |
| Southern Africa | 18,797 | 20,781 | 21,813 | 29,848 | 37,461 | 38,857 | 37,339 | 41,554 | 47,854 | 59,043 | 84,942 | 87,118 | 79,859 | 88,843 | 78,644 | 60,312 | 69,092 | 90,643 |
| Western Africa | 21,352 | 24,547 | 28,016 | 33,671 | 47,299 | 56,798 | 66,685 | 75,187 | 85,892 | 104,421 | 126,599 | 114,773 | 109,297 | 107,872 | 111,932 | 111,374 | 77,596 | 66,898 |
| Developing | 173.894 | 196.357 | 219.453 | 274.233 | 345.156 | 386.560 | 425.615 | 466.763 | 532.562 | 634.977 | 757.366 | 888.102 | 811.600 | 710.488 | 734.862 | 742.815 | 739.672 | 786.141 |



Nominal and real GDP, total and per capita, annual, 1970-2012

Table size: 104 rows by 14 columns

Search Show all Show selected

Select range

- 1997
- 1998
- 1999
- 2000
- 2001
- 2002
- 2003
- 2004
- 2005
- 2006
- 2007
- 2008
- 2009
- 2010
- 2011
- 2012

COLUMNS: YEAR

ROWS: ECONOMY

Other: MEASURE



Nominal and real GDP, total and per capita, annual, 1970-2012

Table size: 32 rows by 13 columns | Search | Show all | Show selected

COLUMNS: | Select range

ROWS: | YEAR

Other: | MEASURE

- Serbia
- Serbia and Montenegro
- Seychelles
- Sierra Leone
- Singapore
- Sint Maarten (Dutch part)
- Slovakia
- Slovenia
- Socialist Federative Republic of Yugoslavia
- Solomon Islands
- Somalia
- South Africa
- South Sudan
- Spain



Nominal and real GDP, total and per capita, annual, 1970-2012

Table size
32 rows by 13 columns

COLUMNS:
YEAR

ROWS:
ECONOMY

Other:
MEASURE

Search Show all Show selected

Select range

- US Dollars at current prices and current exchange rates in millions
- US Dollars at current prices and current exchange rates per capita
- US Dollars at constant prices (2005) and constant exchange rates (2005) in millions
- US Dollars at constant prices (2005) and constant exchange rates (2005) per capita



Nominal and real GDP, total and per capita, annual, 1970-2012

Other: MEASURE - US Dollars at current prices and current exchange rates in millions

| YEAR | 2000 | 2001 | 2002 | 2003 | 2004 | 2005 | 2006 | 2007 | 2008 | 2009 | 2010 | 2011 | 2012 |
|--------------|---------|---------|---------|---------|---------|---------|---------|---------|---------|---------|---------|---------|---------|
| ECONOMY | ↕ | ↕ | ↕ | ↕ | ↕ | ↕ | ↕ | ↕ | ↕ | ↕ | ↕ | ↕ | ↕ |
| New Zealand | 53,780 | 53,508 | 61,931 | 83,118 | 101,538 | 113,813 | 110,157 | 135,225 | 130,422 | 118,562 | 143,088 | 162,783 | 171,540 |
| South Africa | 132,878 | 118,479 | 111,101 | 168,219 | 219,093 | 247,052 | 261,007 | 286,172 | 273,870 | 283,012 | 363,523 | 408,237 | 390,282 |

3. Произвели расчеты с помощью программы Excel.

МЭ новая зеландия - Microsoft Excel

Файл Главная Вставка Разметка страницы Формулы Данные Рецензирование Вид

Вставить Шрифт Выравнивание Число Стили

Условное форматирование Форматировать как таблицу Стили

Вставить Удалить Формат Ячейки

Сортировка Найти и фильтр выделите Редактирование

| | A | B | C | D | E | F | G | H | I | J | K | L | M | N | O | P | Q | | |
|----|-------------------------------------|---------|---------------|---------|--------|--------|--------|-----------|--|--------|--------|--------|--------|--------|--------|--------|--------|--|--|
| 1 | | | | | | | | За штуку: | Долларах США в текущих ценах (в миллионах) | | | | | | | | | | |
| 2 | репортер | поток | индикатор | партнер | 2000 | 2001 | 2002 | 2003 | 2004 | 2005 | 2006 | 2007 | 2008 | 2009 | 2010 | 2011 | 2012 | | |
| 3 | новая зеланди: | экспорт | всево товаров | мир | 13272 | 13730 | 14383 | 16527 | 20344 | 21730 | 22409 | 26943 | 30580 | 24933 | 31396 | 37669 | 37305 | | |
| 4 | новая зеланди: | импорт | всево товаров | мир | 13906 | 13308 | 15047 | 18559 | 23195 | 26219 | 26424 | 30882 | 34369 | 25574 | 30617 | 37105 | 38254 | | |
| 5 | ввп новой зеландии | | | | 53780 | 53508 | 61931 | 83118 | 101538 | 113813 | 110157 | 135225 | 130422 | 118562 | 143088 | 162783 | 17154 | | |
| 6 | экспортная квота новой зеландии | | | | 24,68% | 25,66% | 23,22% | 19,88% | 20,04% | 19,09% | 20,34% | 19,92% | 23,45% | 21,03% | 21,94% | 23,14% | 21,75% | | |
| 7 | импортная квота новой зеландии | | | | 25,86% | 24,87% | 24,30% | 22,33% | 22,84% | 23,04% | 23,99% | 22,84% | 26,35% | 21,57% | 21,40% | 22,79% | 22,30% | | |
| 8 | Внешнеторговая квота новой зеландии | | | | 25,27% | 25,27% | 23,76% | 21,11% | 21,44% | 21,06% | 22,17% | 21,38% | 24,90% | 21,30% | 21,67% | 22,97% | 22,02% | | |
| 9 | | | | | | | | | | | | | | | | | | | |
| 10 | репортер | поток | индикатор | партнер | 2000 | 2001 | 2002 | 2003 | 2004 | 2005 | 2006 | 2007 | 2008 | 2009 | 2010 | 2011 | 2012 | | |
| 11 | ЮАР | экспорт | всево товаров | мир | 29983 | 29258 | 29723 | 36482 | 46146 | 51626 | 58175 | 69784 | 80782 | 61677 | 80892 | 98047 | 87256 | | |
| 12 | ЮАР | импорт | всево товаров | мир | 29695 | 28248 | 29267 | 39748 | 53466 | 62304 | 78715 | 88450 | 101640 | 74054 | 94226 | 121606 | 124245 | | |
| 13 | ввп | | | | 132878 | 118479 | 111101 | 168219 | 219093 | 247052 | 261007 | 286172 | 273870 | 283012 | 363523 | 408237 | 390282 | | |
| 14 | экспортная квота ЮАР | | | | 22,56% | 24,69% | 26,75% | 21,69% | 21,06% | 20,90% | 22,29% | 24,39% | 29,50% | 21,79% | 22,25% | 24,02% | 22,36% | | |
| 15 | импортная квота ЮАР | | | | 22,35% | 23,84% | 26,34% | 23,63% | 24,40% | 25,22% | 30,16% | 30,91% | 37,11% | 26,17% | 25,92% | 29,79% | 31,83% | | |
| 16 | Внешнеторговая квота ЮАР | | | | 22,46% | 24,27% | 26,55% | 22,66% | 22,73% | 23,06% | 26,22% | 27,65% | 33,30% | 23,98% | 24,09% | 26,90% | 27,10% | | |
| 17 | | | | | | | | | | | | | | | | | | | |
| 18 | | | | | | | | | | | | | | | | | | | |
| 19 | | | | | | | | | | | | | | | | | | | |
| 20 | | | | | | | | | | | | | | | | | | | |
| 21 | | | | | | | | | | | | | | | | | | | |
| 22 | | | | | | | | | | | | | | | | | | | |

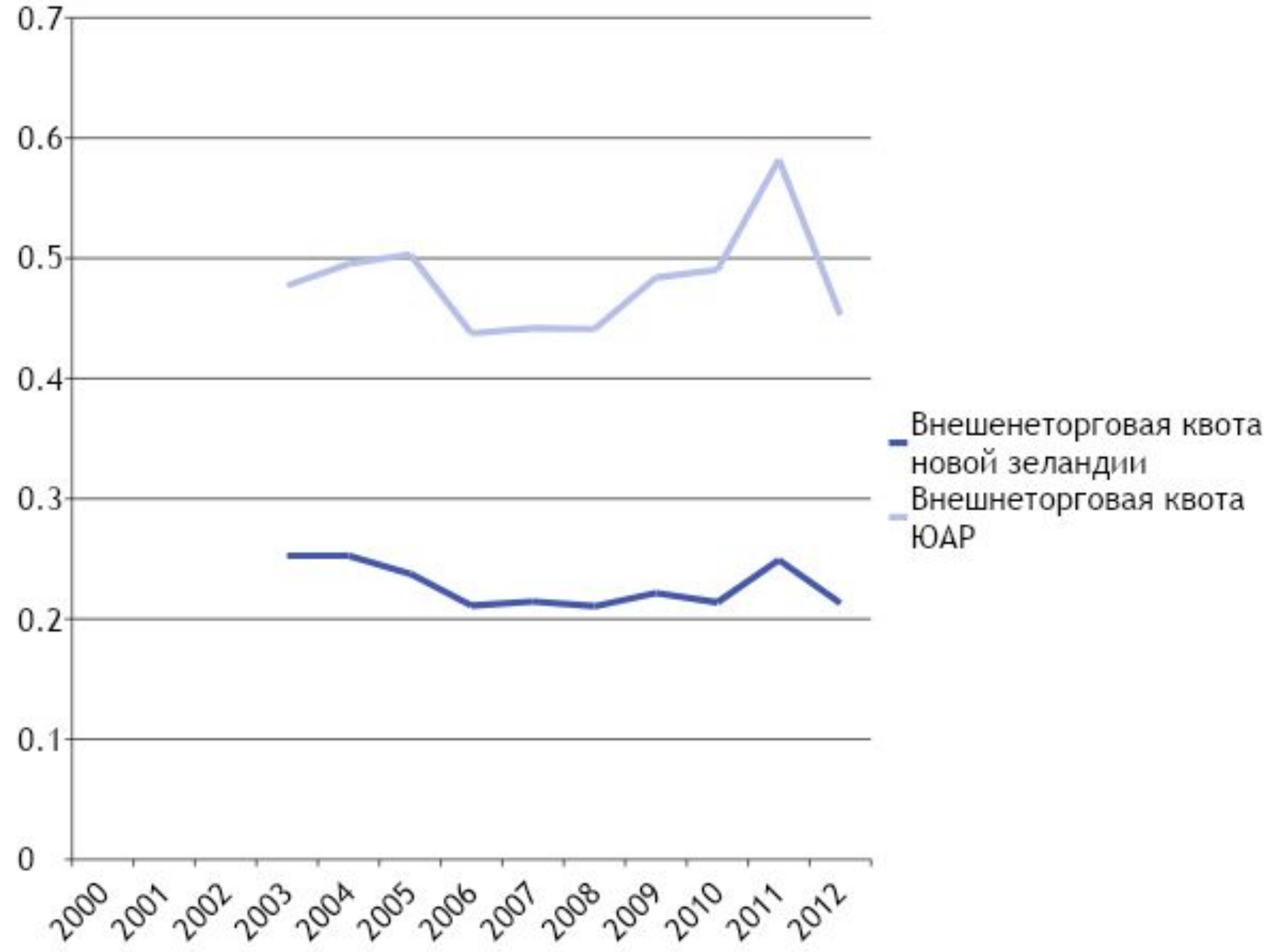
Лист1 Лист2 Лист3

Готово

110%

RU

23:31



4. Сделали выводы:

В Новой Зеландии поток экспорта в мире вырос на 24033 тысячи или в 2,8 раза, а поток импорта увеличился в 2,7 раз. Среднее значение ВВП данной страны составило 98852,23. Экспортная квота Новой Зеландии на период с 2000 года по 2012 год осталась практически неизменной, ее среднее значение составило 36,91%, а среднее значение импортной квоты Новой Зеландии составило 38,86%. Внешнеторговая квота данной территории также не слишком изменялась за данный период, ее среднее значение - 37,89%. Экспорт ЮАР в страны вырос почти в 3 раза (2,91), а импорт увеличился в 4 раза. Средние значения экспортной квоты составляет 43,82%, импортной квоты 53,21%, внешнеторговой - 48,52%.

В Новой Зеландии экспорт и импорт приблизительно равны, это значит, что данная страна больше задействована в МРТ, чем ЮАР, где импорт превышает экспорт.