

# SEASONS AND WEATHER



# Spring! What a lovely season!





# SEASONS

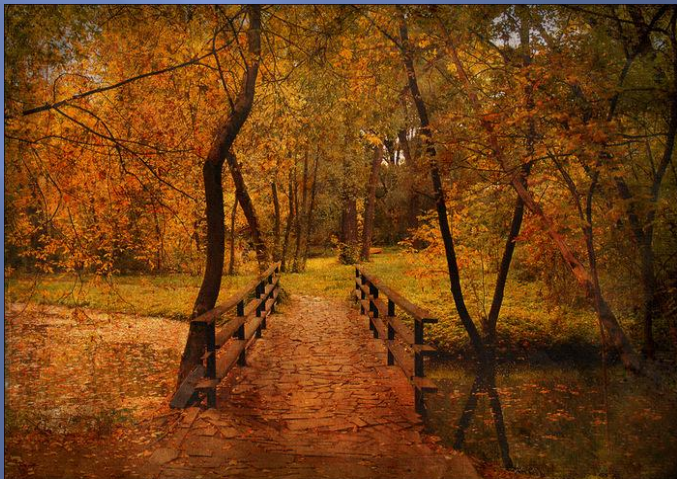
SPRING



SUMMER



AUTUMN

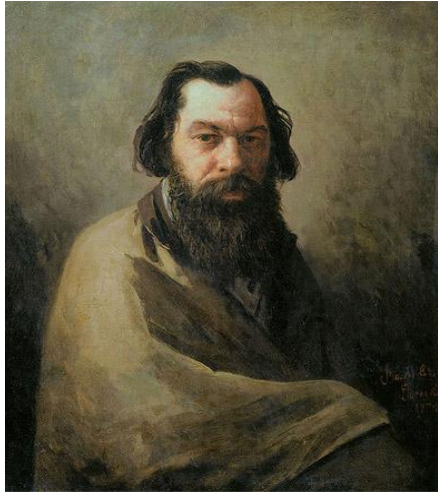


WINTER



# Russian painters

A. SAVRASOV



V. POLENOV

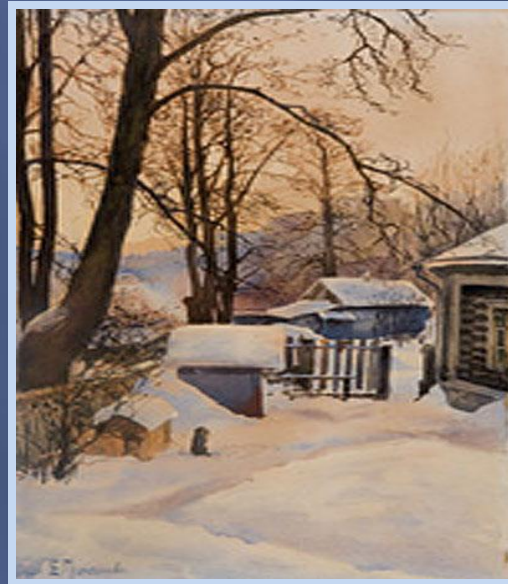
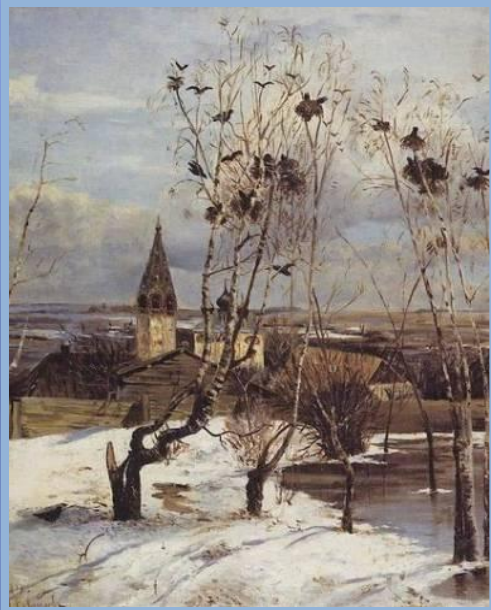


I. LEVITAN





# Their pictures



# Solve the riddles

I think it is ....

# Past simple

Past simple = V + ed

enjoy – enjoyed

thank – thanked

count – counted

Past simple	Present simple
<b>decided</b>	
<b>started</b>	
<b>was</b>	
<b>were</b>	
<b>changed</b>	
<b>wanted</b>	



Past simple	Present simple
<b>decided</b>	<b>decide</b>
<b>started</b>	<b>start</b>
<b>was</b>	<b>be</b>
<b>were</b>	<b>be</b>
<b>changed</b>	<b>change</b>
<b>wanted</b>	<b>want</b>

# Spring calendar

The 8<sup>th</sup> of March

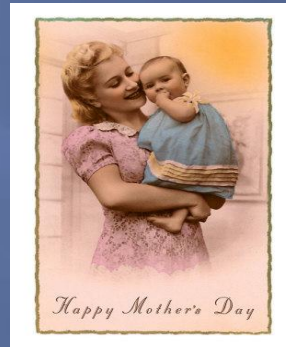
The 22<sup>nd</sup> of March

The 1<sup>st</sup> of April

The 22<sup>nd</sup> of April

The 23<sup>rd</sup> of April

The 9<sup>th</sup> of May



March

1	
2	
3	
4	
5	
6	
7	
8	
9	
10	
11	
12	
13	
14	
15	
16	
17	

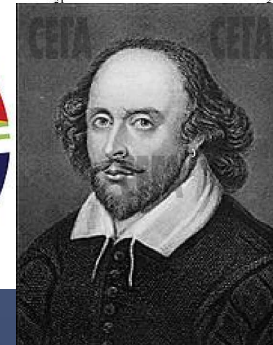
April

1	
2	
3	
4	
5	
6	
7	
8	
9	
10	
11	
12	
13	
14	
15	
16	
17	
18	
19	
20	
21	

May

1	
2	
3	
4	
5	
6	
7	
8	
9	
10	
11	
12	
13	
14	
15	
16	
17	
18	
19	
20	
21	

Earth Week  
April 16 to 22

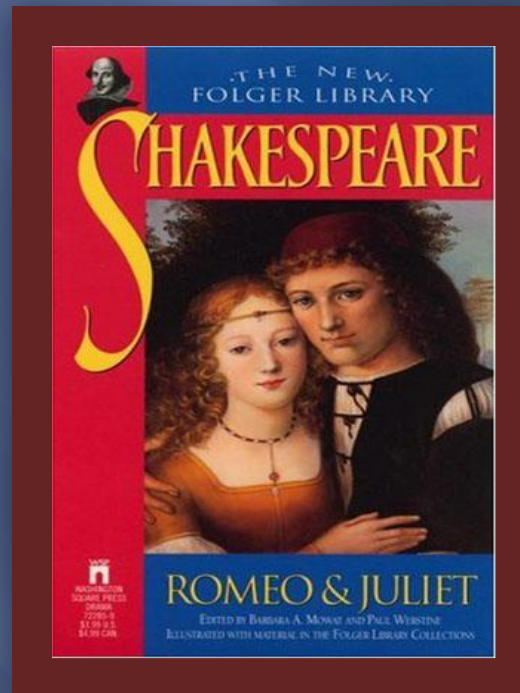


# It's interesting to know:

- Daniel Defoe, the author of the novel Robinson Crusoe, was born on **13<sup>th</sup> of April 1660.**



William Shakespeare, the author of the tragedy "Romeo and Juliet", was born on the **23<sup>rd</sup> of April 1564.**





# Найдите соответствия

## SPRING

1. On the 8 <sup>th</sup> of March we have ...	a) Birds Day
2. The 22 <sup>nd</sup> of March is ...	b) Mother's Day.
3. The 1 <sup>st</sup> of April is ...	c) Earth Day.
4. The 22 <sup>nd</sup> of April is ...	d) Water Day.
5. On the 23 <sup>rd</sup> of April 1564 ... was born.	e) Victory Day.
6. The 9 <sup>th</sup> of May is ...	f) William Shakespeare

# Spring calendar

The 8<sup>th</sup> of March

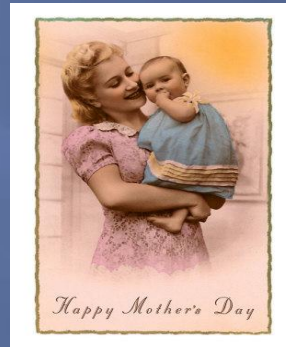
The 22<sup>nd</sup> of March

The 1<sup>st</sup> of April

The 22<sup>nd</sup> of April

The 23<sup>rd</sup> of April

The 9<sup>th</sup> of May



March

1	
2	
3	
4	
5	
6	
7	
8	
9	
10	
11	
12	
13	
14	
15	
16	
17	

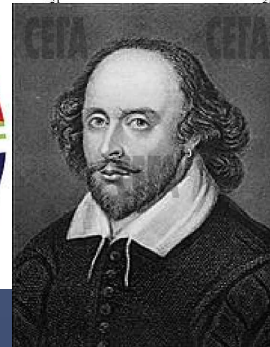
April

1	
2	
3	
4	
5	
6	
7	
8	
9	
10	
11	
12	
13	
14	
15	
16	
17	
18	
19	
20	
21	

May

1	
2	
3	
4	
5	
6	
7	
8	
9	
10	
11	
12	
13	
14	
15	
16	
17	
18	
19	
20	
21	

Earth Week  
April 16 to 22



# SPRING

1. *On the 8<sup>th</sup> of March we have ...*

*b) Mother's Day.*

2. *The 22<sup>nd</sup> of March is ...*

*d) Water Day.*

3. *The 1<sup>st</sup> of April is ...*

*a) Birds Day.*

4. *The 22<sup>nd</sup> of April is ...*

*c) Earth Day.*

5. *On the 23<sup>rd</sup> of April 1564 ... was born.*

*f) William Shakespeare*

6. *The 9<sup>th</sup> of May is ...*

*e) Victory Day.*



**Thank you!**